



**DFG-50
GAS CONVECTION OVEN
REPLACEMENT PARTS LIST**



EFFECTIVE OCTOBER 16, 2007

THE BLODGETT CORPORATION

44 Lakeside Avenue, Burlington, Vermont 05401 USA
Telephone: (802) 860-3700 (800) 331-5842 Fax: (802) 860-3732
www.blodgett.com

Superseding All Previous Parts Lists.

The Company reserves the right to make substitution in the event that items specified are not available.
ERRORS: Descriptive and/or typographic errors are subject to correction.

www.blodgett.com

IMPORTANT: When ordering parts, please provide the model, gas type and serial number of the oven. The identification plate is located on the left side of the combustion compartment and, also, above the control panel under the ledge.

DFG-50

◆ Doors Are Not Returnable

ELECTRICAL COMPONENTS

Ref. No.	Part No.	Descriptionx
1	20349	Buzzer, for 115V Timer
4	18868	Mode Selector Switch w/o Knob
5	16686	Knob, Mode Selector Switch
	30841	Cool Down Switch, Rocker DPDT Red Replacement Kit (For 1 & 3 Set Point Only)
2	18265	Indicator Light, 28V, Red, Round
3	20355	Transformer, 115V to 24V
6	32280	Motor, 115/230V, 1 PH, 1/3 HP, 1 SP
19	16994	Blower Wheel Assy., (10-3/4" Diameter)
	33147	Wheel Puller
	90034	Lug, Grounding
	5091	Cord Set Assy. (6 Feet)
8	20734	Microswitch Assy., Door
	21605	Bracket, Door Microswitch
7	20693	Axial Fan, Low Velocity, 3" (Before 8/90)
7	22301	Axial Fan, 120V, 4-1/2" (After 8/90)

SPARK IGNITION SYSTEM

STANDARD ON OVENS MANUFACTURED AFTER 3/86

Ref. No.	Part No.	Description
9	30005	Dual Solenoid/Pressure Regulator, Nat
	30006	Dual Solenoid/Pressure Regulator, LP
	20348	Spark Box, LP & Nat
	34689	Capacitor Assy, Snubber (After 1/21/99 or S.N. 012199SA044T)
11	18584	Pilot Burner, Complete, Nat
	18585	Pilot Burner, Complete, LP
12	18256	Flame Sensor Only
	19677	Wire, Flame Sensor
	18263	Orifice, Pilot, Nat
	18257	Orifice, Pilot, LP
	32889	Standing Pilot Upgrade Kit
	36313	Tube Assy., Pilot
	20195	Spark Gap Gauge (tool)

MECHANICAL CONTROLS

FOR OVENS MANUFACTURED BEFORE 7/87

Ref. No.	Part No.	Description
	15956	Timer, 60 Minute w/o Knob (Cook Only)
	16030	Knob, Timer
	15673	Indicator Light, 125V, Red, Round (Cook)
	16536	Thermostat, Cook KX-234-36 w/o Knob (140° - 500°)
	17212	Knob, Thermostat

SOLID STATE MANUAL CONTROLS

STANDARD ON OVENS MANUFACTURED AFTER 7/87

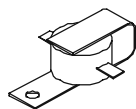
Ref. No.	Part No.	Description
	18430	Temperature Controller, 3 Positions (Specify Model & Temperature Settings)
	21604	Temperature Controller, 1 Position (Specify Model & Temperature Settings)
	17000	Probe, Temperature (For 1 & 3 Position Controllers)
16	18578	Temperature Control Board
17	18588	Probe, Temperature
20	18234	Potentiometer, Remote (Infinite Control)
	18577	8 Position Temperature Switch (Specify Model & Temperature Settings)
	16686	Knob, 8 Position Temperature Switch
15	18225	Timer, 60 Minute 120V
	16686	Knob, Timer
	90099	Heat Selector Switch, 3 Positions w/o Knob
	16686	Knob, Heat Selector Switch
	19303	Wiring Harness, Inf/8-3-1 STPT
	17110	Control Decal, Lexan (3 Position)
	17109	Control Decal, Lexan (1 Position)
	19165	Control Decal, Lexan (Infinite Cook Only)
	19164	Control Decal, Lexan (8 Set Point Cook)

HOT SURFACE IGNITION

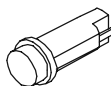
STANDARD ON OVENS MANUFACTURED BEFORE 3/86

Ref. No.	Part No.	Description
	20325	Solenoid Valve/Pressure Regulator, Nat
	20275	Solenoid Valve/Pressure Regulator, LP
13	17952	Ignitor, Electric
14	16529	Thermal Delay Relay (Tube Only)
	20661	Base & Bracket, Thermal Delay Relay
	16372	Fuse, 5 AMP
	20658	Fuse Holder, 5 AMP Fuse
	11200	Terminal Block w/ Screws

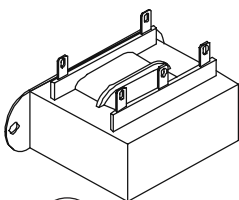
MISC. COMPONENTS



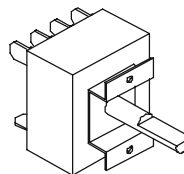
1
20349



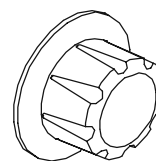
2
18265



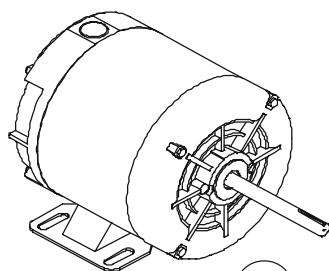
3
20355



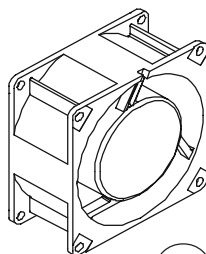
4
18868



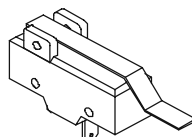
5
16686



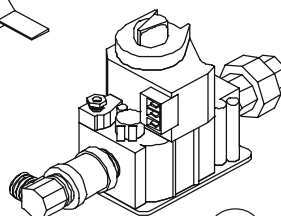
6
32280



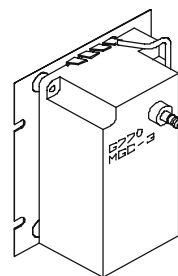
7
20693
22301



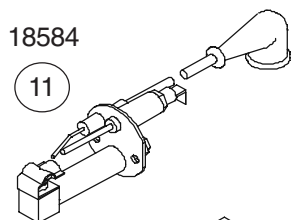
8
20734



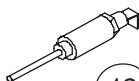
9
30220



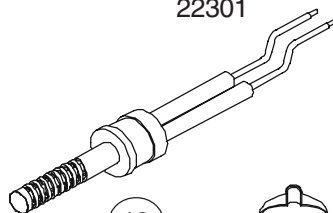
10



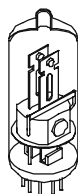
11
18584



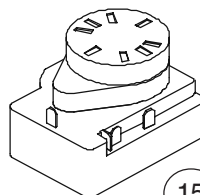
12
18256



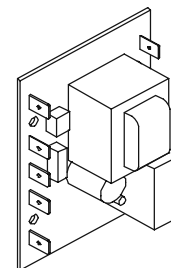
13
17952



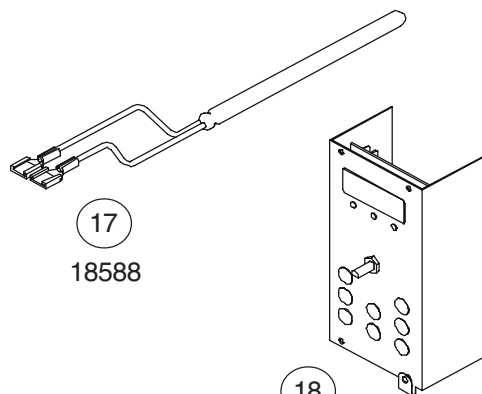
14
16529



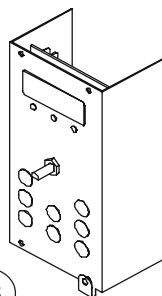
15
18225



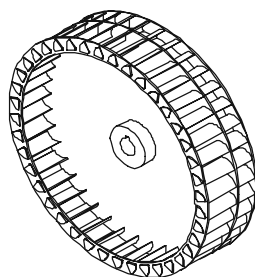
16
18578



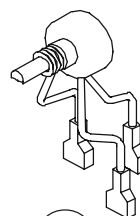
17
18588



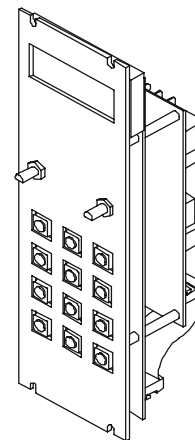
18
30658
See Page 4



19
16994



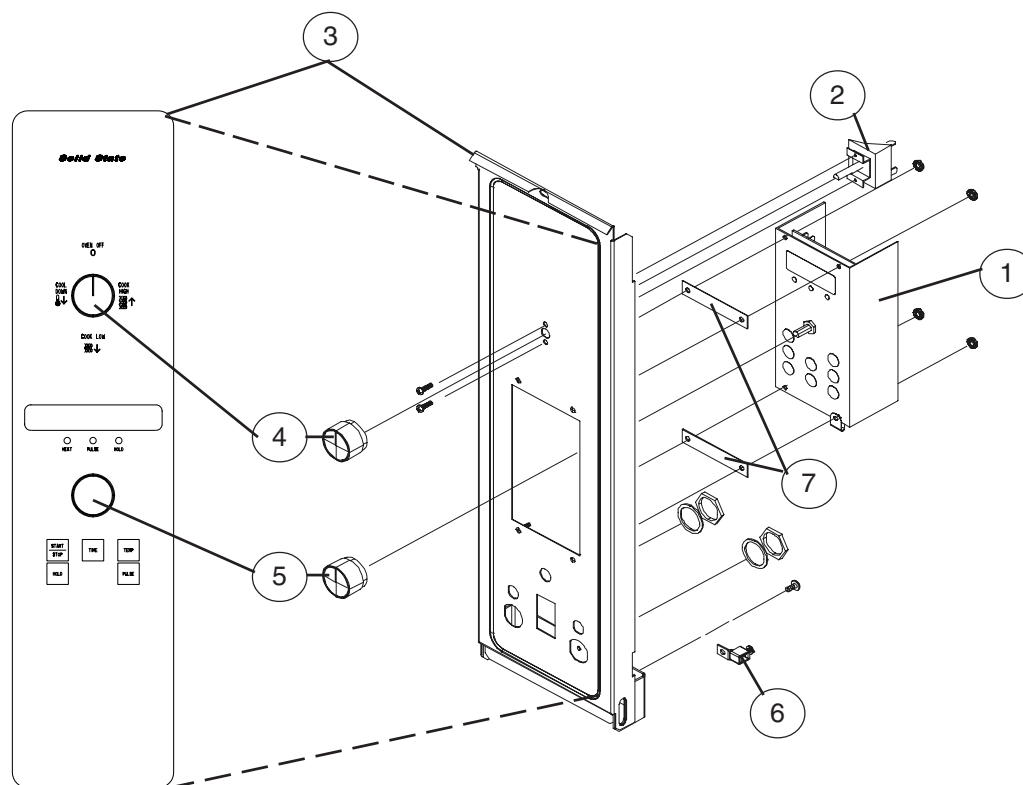
20
18234



21
NLA
See Page 5

SOLID STATE DIGITAL CONTROLS

5 KEY



Ref. No.	Part No.	Description
1	30658	Controller, Digital Time & Temp
	FW529	Controller, Reconditioned
	18588	Probe, Temperature (pictured on page 3, #17)
2	18868	Selector Switch, 3 pos.
	30662	Momentary Light Switch
3	30663	Control Panel & Decal Assy.
4	24684	Knob, Mode Selector (for 30658)
5	24685	Knob, Adjust
	20348	Spark Box LP & Nat
	34689	Capacitor Assy., Snubber (After 1/21/99 or S.N. 012199SA044T)
6	90034	Grounding Lug
	19306	Harness, Wiring (in control compartment)
7	24931	Spacers, Control Qty 2

INTELLITOUCH CONTROLS

17 KEY

Ref. No.	Part No.	Description
	NLA	Temperature Controller, Integrated
	NOTE: <i>Intellitouch/hold Controllers are no longer available. Please see page 9 for IQ2 conversion kit information.</i>	
	20360	Probe, Temperature Integrated
	18960	Board, Interface KFC
	20112	RFI Filter (Used w/ Integrated Controller)
	19341	Relay, SPDT, 24V
	19525	Metal Oxide Varistor Assy.
	19393	Control Panel & Decal Assy.
	19627	Spacer, Brass (Qty 6)
	18934	Spacer, Aluminum (Qty 6)

INTELLIHOLD CONTROLS

12 KEY

Ref. No.	Part No.	Description
21	NLA	Controller, Intellihold (12 Key) pictured p.3
	NOTE: <i>Intellitouch/hold Controllers are no longer available. Please see page 9 for IQ2 conversion kit information.</i>	
	23392	Probe, Temperature
	21443	Knob, Control
	19620	Switch, Rocker, DPST, Black
	19341	Relay, SPDT, 24V
	20678	Wiring Harness, Control Panel
	19306	Wiring Harness
	22519	Control Panel & Decal Assy., Intellihold

FAN DELAY WITH PULSE PLUS

Ref. No.	Part No.	Description
	18290	Timer, 10 Minute, 115V
	18292	Timer, 30 Minute, 120V
	21051	Timer, Solid State, Pulsing, 30 Second, 120V
	15709	Indicator Light, 125V, Amber, Round
	15673	Indicator Light, 125V, Red, Round
	18587	Relay, 3PDT, 120V w/ Bracket
	19304	Wiring Harness, Fan Delay, Solid State (Infinite & 8 Set Point)
	19166	Control Panel & Decal, Lexan (8 Set Point)
	19167	Control Panel & Decal, Lexan (Infinite)

COOK & HOLD CONTROLS

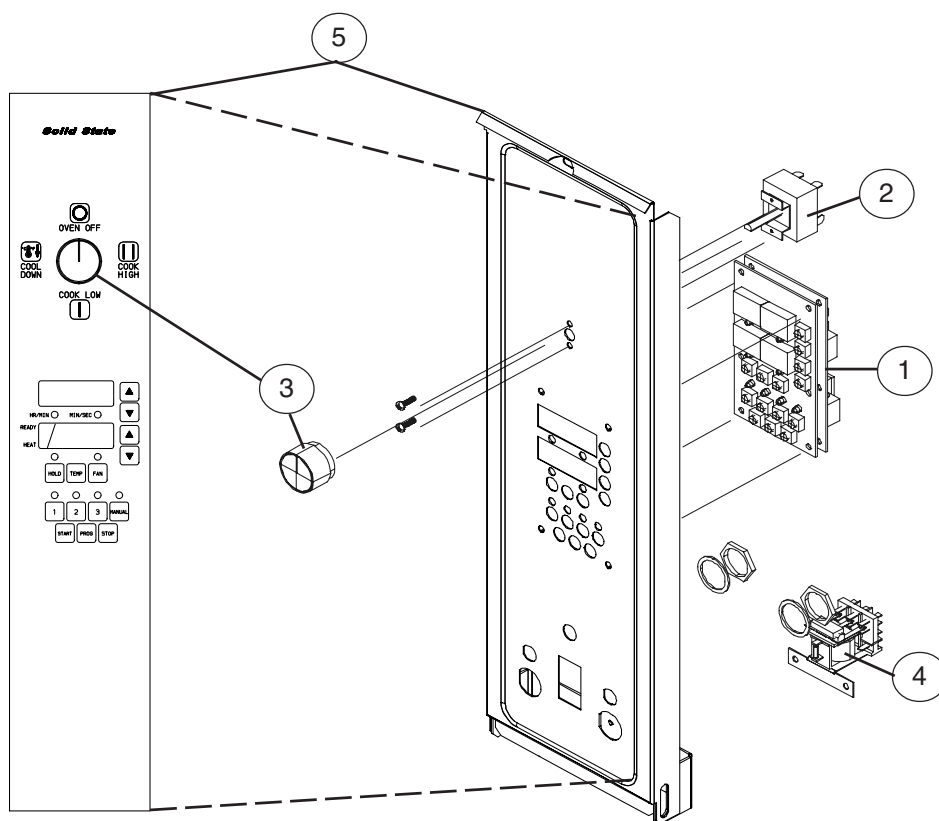
Ref. No.	Part No.	Description
	17986	Timer, 12 Hour w/ Knob (Before 7/87)
	17864	Timer, 12 Hour w/o Knob (After 7/87)
	16686	Knob, Timer
	15365	Thermostat, Hold KX-274-36 (Before 7/87)
	16392	Knob, Hold Thermostat
	20351	Temperature Controller, Hold (150° - 250°) (After 7/87)
	16686	Knob, Hold Temperature Controller
	20347	Mode Selector Switch w/o Knob
	16686	Knob, Mode Selector Switch
	15709	Indicator Light, 125V, Amber, Round (Hold)
	90043	Relay, Motor, DPDT
	16998	Relay, 120V, SPST, 30 AMP (Before 7/87)
	18587	Relay, 120V, 3PDT, 30 AMP (After 7/87)
	90029	Terminal Block w/ Screws
	21438	Base & Bracket, TDR (Before 7/87)
	19163	Control Decal, Lexan (After 7/87)

COMPUTER READY OVENS

Ref. No.	Part No.	Description
	20080	Probe, Temperature (Dual 4 Wire) for 1 & 3 Position Boards
	16645	Probe, Temperature (2 Wires) for 8 Set Point and Infinite Boards
	17925	Cable Extension (For Sgl Oven)
	18273	Wire Assy., Extension (For Dbl Oven)

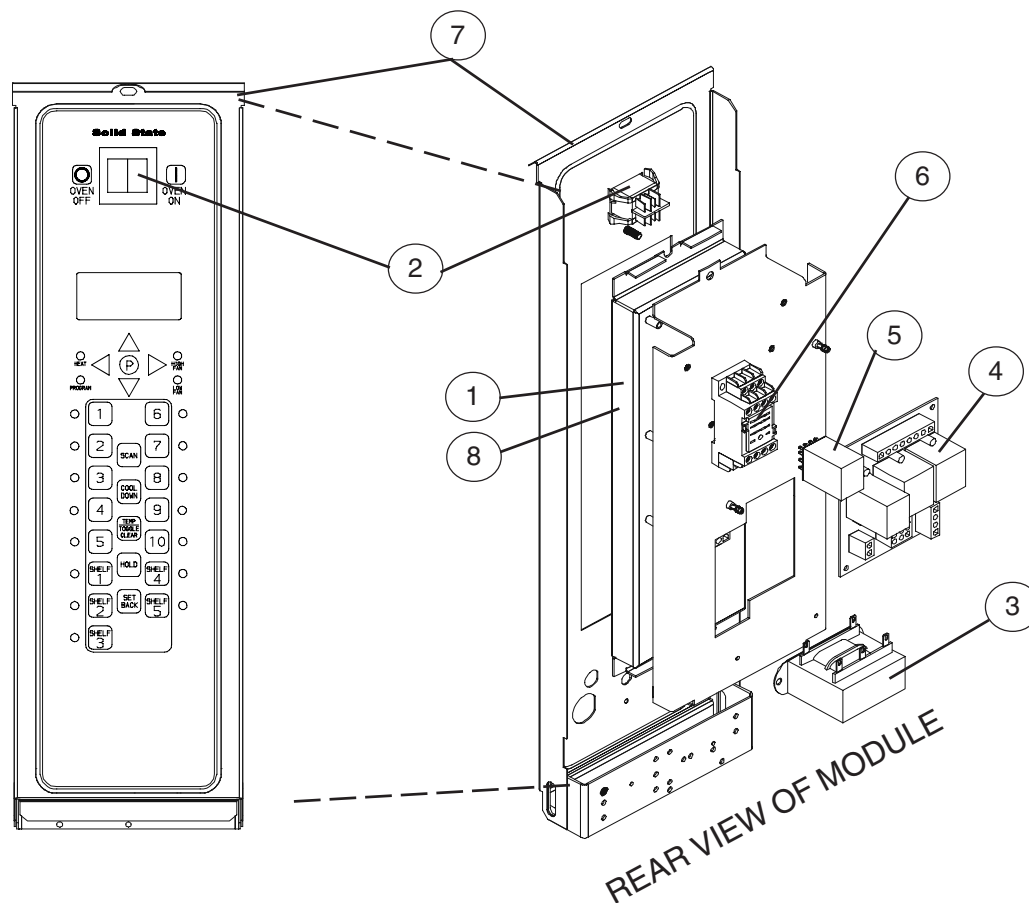
CH102 CONTROLS

14 KEY



<u>Ref. No.</u>	<u>Part No.</u>	<u>Description</u>
1	37087	Controller, CH102 14 Key
	34473	Probe, RTD 36"
2	18868	Mode Selector Switch, 3 Position
3	24684	Knob, Adjust for Mode Selector Switch Qty 1
4	18587	Relay & Bracket, 3PDT 120V Qty 1
	16563	Relay Bracket Only
		Harness, Wiring Control Compartment
	34404	Harness, Wiring CH102
5	36061	Control Panel & Decal Assy, CH102

IQ2 CONTROLS



Ref. No.	Part No.	Description
1	50736	Controller, IQ2 (After 07/20/2007)
	51059	Controller, IQ2 (Before 07/20/2007)
		NOTE: For ovens made prior to 07/20/2007 51059 includes new panel and decal
	33074	Probe, RTD
2	19619	Switch, Rocker, DPST
3	20355	Transformer
4	33073	Relay Board
5	36297	Relay, 4PDT, 3A, 120V
6	33922	Relay, Socket
	19306	Harness, Wiring (in control compartment)
	36247	Harness, Control IQ2
	33072	Harness, Control 24V
7	37708	Panel & Decal Assy (After 07/20/2007)
	51058	Panel & Decal Assy (Before 07/20/2007)
	36728	IQ2 Conversion Kit (From Intellitouch & Intellihold) 1 SP 1 PH

EXCLUSIVE TO BOB EVANS

BELOW KITS ARE PROGRAMMED EXCLUSIVELY FOR BOB EVANS. NOT FOR GENERAL MARKET SALE!

Ref. No.	Part No.	Description
8	37000	Controller, IQ2, (After 07/20/2007)
	51060	Controller IQ2, (Before 07/20/2007)
		NOTE: for ovens made prior to 07/20/2007 51060 includes new panel and decal
	37037	IQ2 Conversion Kit (From Intellitouch) 1 SP, 1 PH

BURNER & PIPING COMPONENTS

<u>Ref. No.</u>	<u>Part No.</u>	<u>Description</u>
	19967	Burner Assy., (Before 3/86)
	19968	Burner Assy., (After 3/86)
	17066	Deflector Assy,
	19409	Orifice, Main Burner (Specify Model & Gas Type)
	4013	Air Shutter Only
	3001	Locknut, Air Shutter
	17103	Nipple, Manifold 1/2" x 7-1/4" (Before 3/86)
	10762	Coupling, Reducer 1/2" x 3/4"
	3807	Union, 1/2" Female
	1949	Nipple, 1/2" x Close
	597	Ell, 90° Black
	17102	Ell, 45° Black
	10252	Union, Ell 1/2"
	21545	Manifold Tube Assy., (After 3/86)
	21547	Ignitor Shield (After 3/86)
	21548	Bracket, Manifold (After 3/86)
	10651	Valve, Manual Gas Shut-Off (Before 3/86)
	10809	Control Stack Nipple 1/2" x 2"
	11508	Control Stack Nipple 1/2" x 4"

DOOR COMPONENTS

<u>Ref. No.</u>	<u>Part No.</u>	<u>Description</u>
<u>MANUFACTURED AFTER 9/84</u>		
◆	18404	Door Assy, Gls, LH Hinge
◆	18405	Door Assy, Sld, LH Hinge
◆	19609	Door Assy, Gls, RH Hinge
◆	19610	Door Assy, Sld, RH Hinge

MANUFACTURED BEFORE 9/84

◆	17805	Door Assy, Roller Latch Conv. Glass
◆	17806	Door Assy, Roller Latch Conv. Solid

NOTE: Door assemblies do not include part # 17865 (Roller latch). Please order this part separately.

9036	Window Assy, Door (17-1/8" x 10-1/8")
17865	Latch, Roller w/ Screws (on Oven) (Manufactured after 9/84)
17946	Catch, Door Roller Assy w/ Screws (on door) (Manufactured after 9/84)
90087	Door Catch, Spring Clip (Manufactured before 9/84)
8589	Door Handle, 13"
17862	Perimeter Gasket, Door (Manufactured after 9/84)
17336	Perimeter Gasket, Door (Manufactured before 9/84)
17337	Lower Hinge Pin w/ Fasteners, Door
8594	Upper Hinge Pin, Door
90017	Washers, Door (Set of 2)
90004	Bushings, Upper Door Hinge (Set of 2)
8633	Cam Assy., Door Switch

BAKING COMPARTMENT COMPONENTS

<u>Ref. No.</u>	<u>Part No.</u>	<u>Description</u>
	22637	Rack, w/ball stops, Each (20-7/8" x 14-5/8")
	8590	Rack Support (Set of 2) (Before 8/91)
	31311	Rack Support (Set of 2) (After 8/91)
19	16994	Blower Wheel Assy.
	17333	Thermostat Bulb Clip (Each)
	35934	Interior Baffle & Bracket Kit
		Blower Wheel Cover, Porc. Replaces 16990
	16987	Interior Baffle, Blower Wheel Cover) S/S

STANDS

<u>Ref. No.</u>	<u>Part No.</u>	<u>Description</u>
	11993	Stand, 5-3/4" S/S
	10857	Stand, 7" S/S
	34024	Stand, 11" Stainless w/Shelf & Adjustable Casters
	18479	Stand, 16" S/S w/ Shelf
	10856	Stand, 19" S/S w/ Shelf
	10855	Stand, 24" S/S w/ Shelf
	10854	Stand, 33" S/S w/ Shelf
	18482	Stand, 16" S/S w/ Shelf & Casters
	11437	Stand, 19" S/S w/ Shelf & Casters
	15151	Stand, 24" S/S w/ Shelf & Casters
	15153	Stand, 33" S/S w/ Shelf & Casters
	20609	Shelf for Stand, Ptd
	20497	Shelf for Stand, S/S
	16002	Casters (Set of 4)
	33523	Casters, Adjustable (Set of 4)
	20435	Legs, 4" w/ Bolts, Ptd (Set of 4)

EXTERIOR OVEN COMPONENTS

<u>Ref. No.</u>	<u>Part No.</u>	<u>Description</u>
	6433	Crown Assy.
	16476	Logo/Instruction Decal
	90086	Nameplate, Blodgett
	17032	Combustion Compartment Cover, LH Hinge
	30996	Combustion Compartment Cover, RH Hinge
	21600	Access Panel, S/S (Removeable Bodyside) (Units before 7/1/98)
	34878	Access Panel, S/S (Removeable Bodyside) (Units after 7/1/98)
	30990	Draft Diverter, Canopy Vent, S/S
	30989	Drafthood, Direct Vent (6" Dia.) S/S

EXCLUSIVE TO EXPORT

<u>Ref. No.</u>	<u>Part No.</u>	<u>Description</u>
	20356	Transformer, 230V to 240V
	21430	Axial Fan, 230V (Before 8/13/90)
	22302	Axial Fan, 240V (After 8/13/90)
	20084	Timer, 60 Minute, 240V
	20427	Timer, 12 Hour, 240V
	18582	Relay, 3PDT, 240V
	19666	Relay, DPDT
	16539	Indicator Light, 250V, Amber, Round
	34530	Pilot Burner & Ignitor Assy, Nat CE
	34531	Pilot Burner & Ignitor Assy, LP/But CE
	20084	Timer, 60 Minute, 240V
	20427	Timer, 12 Hour, 240V
	19982	Thermostat, High Limit
	18783	Transformer, 230V to 24V
	22302	Axial Fan, 240V
	18786	Fuse
	22989	Fuseblock
	18551	Resistor, 1 Meg
	20298	Wire, Green 30"
	20299	Wire, Green 32"
	20305	Wire, Green 18"
	M9182	Dual Solenoid/Pressure Regulator, Nat
	19672	Wire Assy., White, 27"
	32280	Motor, 115/230V, 1 SP, 1/3 HP
	22988	Control Panel & Decal Assy.
	33202	Tube, Pilot
	33205	Stack Assy, Control CE
	33298	Fuse, 250V, 50MA CE
	33282	Fuseholder, In-Line
	33360	Manifold Assy, CE
	M3168	Ignition Control, Landis & Gyr
	M6449	Filter, Noise
	M3172	Timer, Fixed 2 Second
	36066	Thermostat, High Limit Kit (Manual Reset) CE Replaces M3295
	34781	Conversion Kit, Air Pressure Differential Switch (Replaces M3330) CE (Before 3/23/99 or S.N. 032399SA066S)
	M9422	Air Pressure Differential Switch, switch only CE
	M9705	Polyurethane Tubing, used w/pressure switch (Per Foot, Total 3 FT) CE
	30658	Solid State Digital Controller
	18588	Probe, Temperature
	16539	Light, Indicator 250V, Amber, Round
	30517	Switch, Rocker DPST, Black
	18578	Temperature Control Board (Solid State Manual)
	18588	Probe, Temperature (Solid State Manual)
	18234	Potentiometer, Remote (Infinite Control)
	16037	Light, Indicator 250V, Red, Round
	33360	Manifold Assy. CE
	20348	Spark Box CE

EXCLUSIVE TO KFC JAPAN

<u>Ref. No.</u>	<u>Part No.</u>	<u>Description</u>
	22990	Transformer, 100V to 24V
	22991	Interface Board
	22993	Mounting Plate, Interface Board
	20248	Interface Harness
	20179	Blower Wheel
	20253	Spacer, Steel
	18877	Spacer, Brass
	32280	Motor, 115V, 1 PH, 1/3 HP
	22992	Control Panel & Decal Assy.
	30842	Cool Down Switch, Rocker DPDT Red Replacement Kit (For 1 Set Point Only)