



Silver Series™ 4-Flavor

Gourmet Cold Beverage System

with Fully Lighted Graphics and Portion Control Dispense

ITEM#

PROJECT

DATE



Model JDF-4S

w/Lighted Graphics

Dimensions: 33.1"H x 15.7"W x 25.5"D


(84.1cm H x 39.9 cm W* x 64.8cm D)

*width including door handle

Features

Gourmet Cold Beverage System

Cold beverage dispenser with patented High Intensity® mixing delivers superior drinks consistently glass after glass

- Three-size portion-control dispense.
- Fully lighted door graphics bring high visibility to front-of-house applications.
- One dispenser delivers both frozen and ambient products increasing profits by lowering costs.
- Drink consistency assured with the BUNN patented High Intensity® mixing technology.
- Pumps and mixes 2+1 to 11+1 concentrated beverages, including 4+1 high viscosity and 5+1 juices accurately and consistently.
- Quick dispense with 1.0 to 1.5 ounces (29.6 to 44.4 ml) per second flow rate.
- 7" (17.8 cm) cup clearance accommodates most juice containers.
- 18 lb. (8.2 kg) ice bank provides superior cold drink capacity.
- Advanced concentrate pump designed for easy setup, accuracy and durability.
- Service-friendly design including two modular dispense decks makes service fast and simple.
- Door lock standard.
- Preventive maintenance kit: 39690.0000. 

For current specification sheets and other information, go to www.bunn.com.

Related Products

Easy Clear® EQHP-10

Product No. : 39000.0004



Easy Clear® EQHP-10CRTG

Product No. : 39000.1004

Ambient Conversion Kit

Product No.: 33699.0001

(one kit required per dispense station - photo shows 4-dispense station unit with one container and three ambient conversion kits)



Extended Drip Tray

Product No. : 40789.1000

increases cup clearance to 10.25"



Refillable Juice Container

Capacity: 1 Gallon

Product No.: 39302.0000



Portion Control Membrane Switch Kit

Product No. : 41298.0000

Push-Hold Membrane Switch Kit

Product No. : 41299.0000

Model

JDF-4S

Agency Listing



Patents Apply

2/09

D7.1b

Dimensions & Specifications

CANADA



Model	Product #	Volts	Amps	Capacity	Cubic Measure	Shipping Weight	Cord Attached
JDF-4S, Lit Door (portion control, juice display)	37300.6023	120	6	3 (12 oz.) drinks/min*	10.3 ft ³	129 lbs.	Yes [†]

Models include air filter

Refillable Juice Container Product No.: 39302.0000 Capacity: 1 Gallon

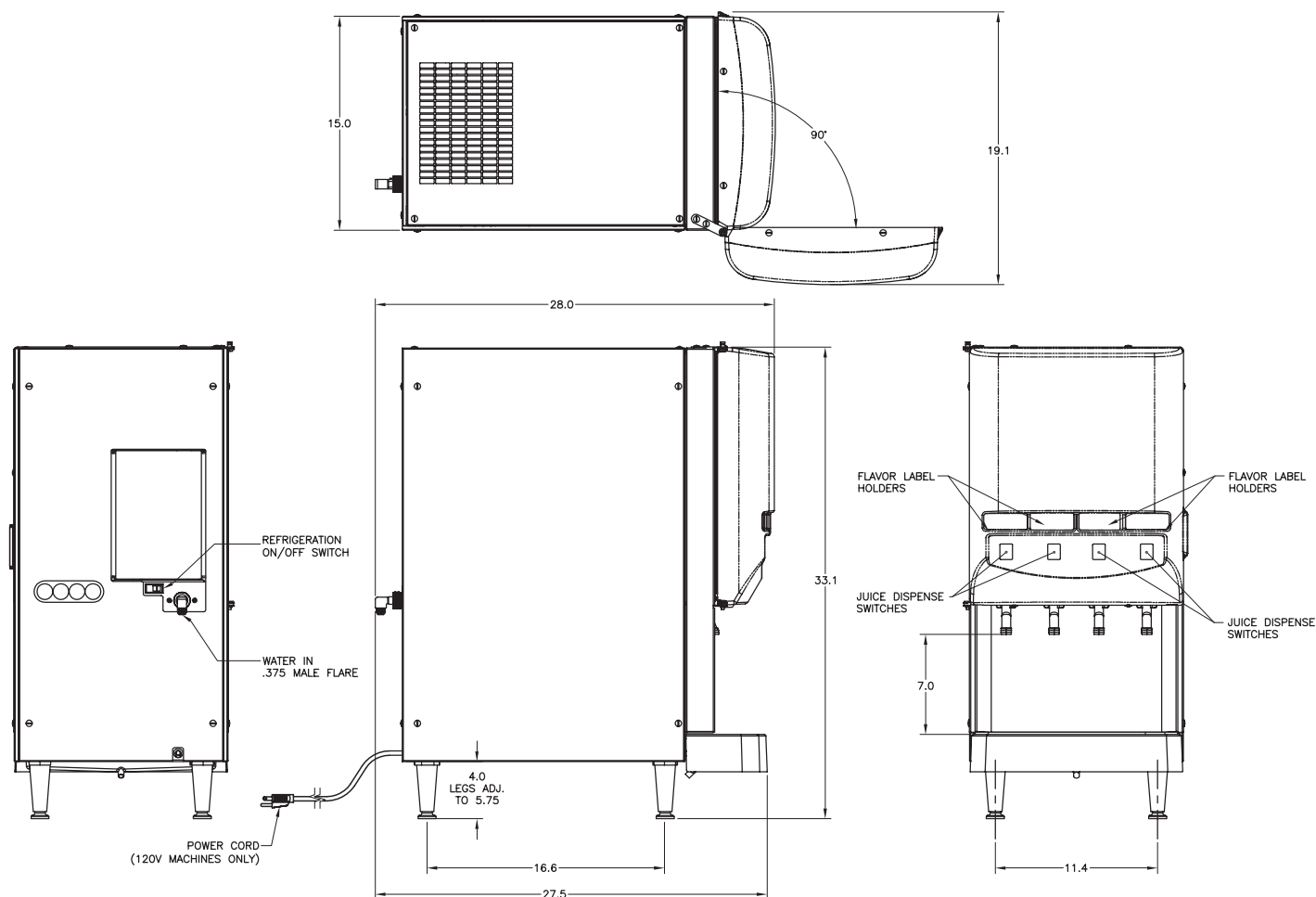
* 75°F (24°C) incoming water for 145 drinks without exceeding 41°F (5°C) finished drink temperature.

† Power cord (NEMA 5-15P) 15 Amp-120V machine only.

Electrical: Model requires 2-wire grounded service rated 120V, single phase, 60 Hz.

Plumbing: 20-100 psi (138 - 690 kPa). Machine supplied with $\frac{3}{8}$ " male fitting.

Refrigeration: R-134a refrigerant, 9 oz. (.28 kg), 8 lb. (3.6 kg) ice bank system



Bunn-O-Matic Corporation of Canada - 280 Industrial Pkwy. S. Aurora, Ontario L4G 3T9 • 905-841-2866 • Fax 905-841-2775 • www.bunn.com

BUNN® practices continuous product research and improvement. We reserve the right to change specifications and product design without notice. Such revisions do not entitle the buyer to corresponding changes, improvements, additions or replacements for previously purchased equipment.

All dimensions shown in inches. Bunn Corporation owns all copyrights relating to materials in this publication. Please contact Bunn Corporation to request permission to reproduce any portion of this publication.