

Champion®

The Dishwashing Machine Specialists

Project _____

Item No. _____

Quantity _____

STANDARD FEATURES

- **ENERGY STAR® Qualified**
- Dual NSF listed as both a dishwasher and Pot/Pan washer
- Automatic tank fill
- Built-in stainless steel electric booster or internally mounted (D-HBT only)
- Automatic drain valve
- Adjustable mode/time selector switch
- Door activated cycle start
- Electric tank heat (5.2 kW)
- Low-water tank heat protection
- 2-Hp drip-proof pump motor
- Stainless steel pump impeller
- Door safety switch
- Interchangeable upper and lower spray arms
- Stainless steel front and side panels
- Vented wash chamber design
- Detergent/chemical connection provisions
- Water pressure regulating valve (mounted)
- Single point electrical connection (see chart)
- Vent fan control

D-HBT/D-H1T

Door-type
High Temperature
Extended Hood Warewashing Machine

D-HBT With Booster
D-H1T Without Booster



D-HBT/D-H1T DOOR-TYPE

OPTIONS & ACCESSORIES

- ☐ Sheet pan rack
- ☐ Electric: 70°F rise (internally mounted) (D-HBT only)
- ☐ Steam coil tank heat
- ☐ 40°F Steam booster (D-HBT only)
- ☐ 70°F Steam booster (D-HBT only)
- ☐ Steam injector tank heat 40°F rise (built-in) (D-HBT only)
- ☐ Corner operation with 90° mounted controls

SPECIFIER STATEMENT

Specified unit will be Champion Industries model DHB-T/D-H1T door-type high temperature extended hood warewasher with built-in booster (D-HBT) or without booster (D-H1T).

Features include 2 Hp motor, 5.2 kW electric tank heat, dual NSF approved as both dishwasher and potwasher, adjustable mode/timer switch and interchangeable Stainless Steel upper and lower wash and rinse arms. 1 year parts and labor warranty.

2674 N. Service Road
Jordan Station, Ontario, Canada L0R 1S0
Tel: 800/263-5798 Fax: 905/562-4618

Champion Industries, Inc.
3765 Champion Blvd., Winston-Salem, NC 27105
Tel: 336/661-1556 Fax: 336/661-1979

www.championindustries.com

Champion®

The Dishwashing Machine Specialists

D-HBT/D-H1T DOOR-TYPE

Door-type High Temperature
Extended Hood Warewashing Machine
D-HBT with Booster
D-H1T Without Booster

Utilities

1	Electrical (See Box)
2	Hot Water 3/4" NPT 110°F -140°F hot water connection. Flow pressure 20-22 psi.
3	Drain 2" OD connection. Max. flow rate. 15 US gpm.

Details, Dimensions & Connections

Dimensions shown in inches [millimeters]
Length between table connections: **26"**
Volume crated: **46 cu. ft.**
Shipping weight crated: **400 lbs.**

For Electrical Heat D-HBT w/40°F Rise Booster

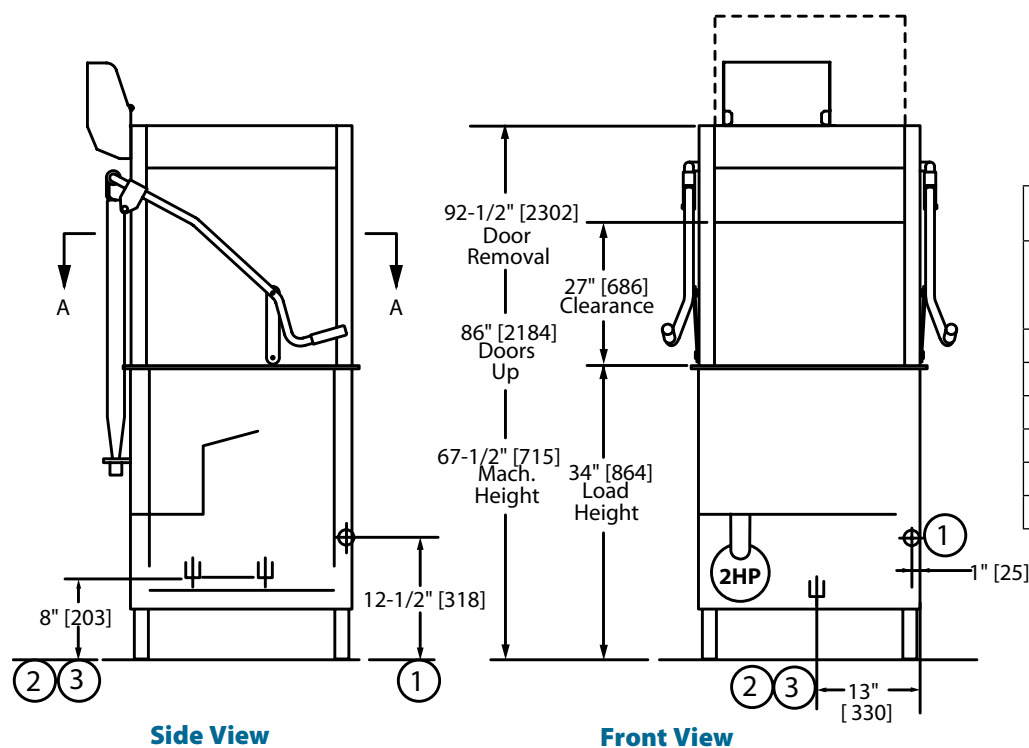
Elec. Specs.	Rated Amps	Minimum Supply Ckt. Conductor Ampacity	Minimum Overcurrent Protective Device
208/60/1	76	80	80
240/60/1	85	90	90
208/60/3	42	45	45
240/60/3	47	50	50
480/60/3	20	25	25
575/60/3	17	25	25

For Electrical Heat D-HBT w/70°F Rise Booster

Elec. Specs.	Rated Amps	Minimum Supply Ckt. Conductor Ampacity	Minimum Overcurrent Protective Device
208/60/3	59	70	70
240/60/3	67	70	70
480/60/3	31	35	35
575/60/3	26	30	30

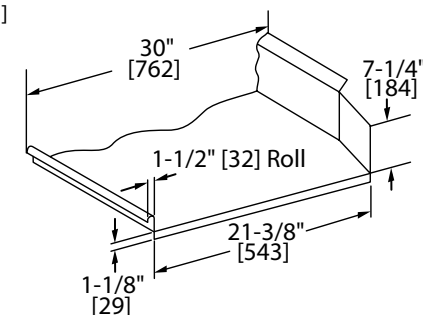
For Steam Heat D-HBT and D-H1T

Elec. Specs.	Rated Amps	Minimum Supply Ckt. Conductor Ampacity	Minimum Overcurrent Protective Device
208/60/1	15	20	20
240/60/1	14	20	20
208/60/3	8	15	15
240/60/3	7	15	15
480/60/3	4	15	15
575/60/3	3	15	15



For Electrical Heat D-H1T Electrical Power Requirements

Elec. Specs.	Rated Amps	Minimum Supply Ckt. Conductor Ampacity	Minimum Overcurrent Protective Device
208/60/1	40	50	50
240/60/1	43	50	50
208/60/3	22	25	25
240/60/3	23	25	25
480/60/3	10	15	15
575/60/3	8	15	15



Champion®

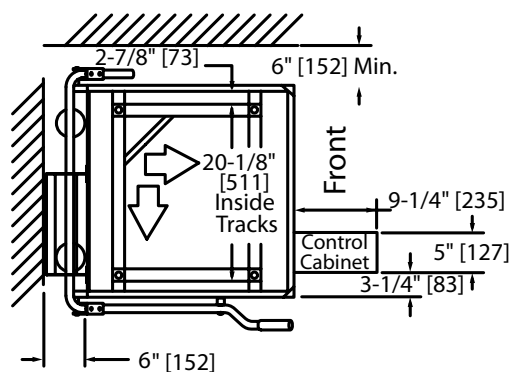
The Dishwashing Machine Specialists

D-HBT DOOR-TYPE

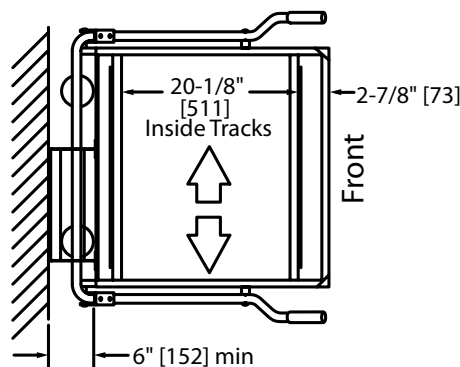
Door-type High Temperature
Extended Hood Warewashing Machine

D-HBT with Booster
D-H1T Without Booster

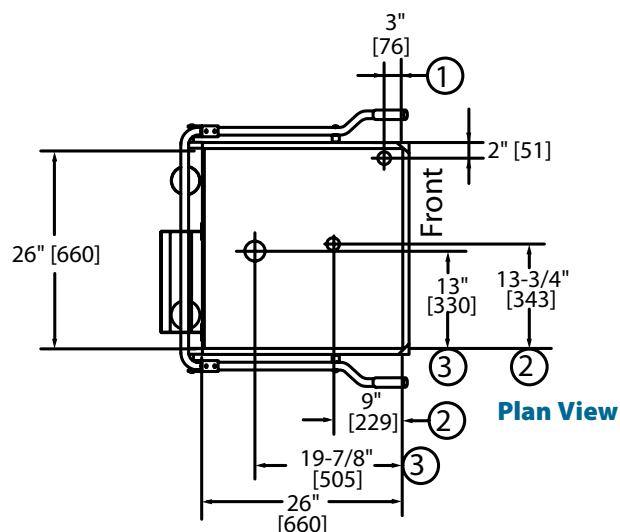
Dimensions shown in inches [millimeters]



Corner Configuration



Straight-through Configuration



Plan View

Warning: Plumbing and electrical connection should be made by qualified personnel who will observe all the applicable plumbing, sanitary and safety codes and the National Electrical Code.

Plumbing Notes: Because of the variation in house supplied water pressure, a water pressure regulating valve (PRV) is needed. The PRV is supplied by Champion and has been installed on the machine prior to shipment.

Note: Water Hammer Arrestor (meeting ASSE-1010 standard or equivalent) to be supplied (by others) in common water supply line at service connection.

SPECIFICATIONS

Capacities

Wash tank US gal.	9
Dishwasher Mode:	
NSF Rated Racks per hr.	49/29
Pot/Pan Washer Mode:	
NSF Rated Racks per hr.	19/10

Motor horsepower

2

Water consumption

	Dishwasher Mode	Pot/Pan Washer Mode
Gal. per rack	0.9/3.4	1.34/5.1
US gal./liters		

Gal. per hr.		
(max. use) US gal.	44	36/99

Temperature°F

Wash	150
Rinse	180

Heating

Tank heat, electric (kW)	5.2
Tank heat, steam (lbs. per hr required at 15 psi flow pressure)	25
Electric booster (kW required for 40°F rise)	9
Electric booster (kW required for 70°F rise)	13
Steam booster (internally mounted) (lbs. per hr. required for 40°F rise)	50
Steam booster (internally mounted) (lbs. per hr. required for 70°F rise)	65

Time cycle in seconds

Dishwasher Mode	Pot/Pan Washer Mode
Wash 44 96	Wash 156 336
Rinse 10 10	Rinse 13 13
Dwell 14 14	Dwell 11 11
Total 68 120	Total 180 360

Due to an ongoing value analysis program at Champion, specifications contained in this catalog are subject to change without notice.

Champion Industries, Inc., 3765 Champion Blvd., Winston-Salem, NC 27105 • 336-661-1556 • Fax: 336/661-1979 • www.championindustries.com
2674 N. Service Road, Jordan Station, Ontario, Canada L0R 1S0 • 800/263-5798 • Fax: 905/562-4618

D-HBT/D-H1T

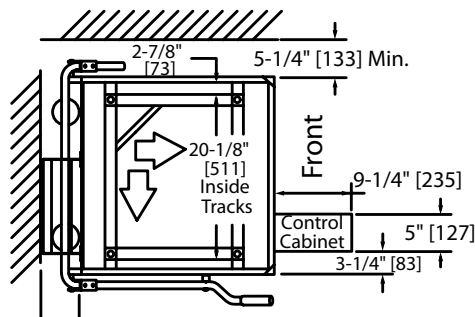
Door-type High Temperature
Extended Hood Warewashing Machine
D-HBT with Booster
D-H1T Without Booster

Champion[®]
The Dishwashing Machine Specialists



**Corner Unit Showing
90° Mounted Control Panel**

Corner Configuration



Dimensions shown in inches [millimeters]