

Champion[®]

The Dishwashing Machine Specialists

Project _____
Item No. _____
Quantity _____

D-LF DOOR-TYPE

STANDARD FEATURES

- Automatic tank fill
- Electric tank heat
- Balanced door lift system
- Corner model available (contact factory)
- Automatic electric drain valve
- Low-water tank heat protection
- 1 Hp drip-proof pump motor
- Door safety switches
- Top-mounted, splash-proof control console
- Interchangeable upper and lower spray arms
- Stainless steel pump impeller
- Stainless steel front and side panels
- Detergent/chemical connection provisions
- Single point electrical connection (see chart)
- Vent fan control

D-LF

Door-type
Low Temperature
Dishwashing Machine



OPTIONS & ACCESSORIES

- ☐ Steam coil tank operation
- ☐ Corner operation

SPECIFIER STATEMENT

Specified unit will be Champion model D-LF low temperature dishwashing machine.

Features top mounted control cabinet, balanced door lift with safety latch, interchangeable stainless steel wash and rinse arms, 55 racks/hr., 1.1 US gals/rack. Constructed of type 304 SST.

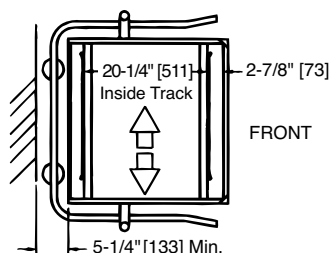
1 year parts and labor warranty.

Champion Industries, Inc.
P. O. Box 4149, Winston-Salem, NC 27115
Tel: 336/661-1556 Fax: 336/661-1979
2674 N. Service Road,
Jordan Station, Ontario, Canada L0R 1S0
Tel: 800/263-5798 Fax: 905/562-4618
www.championindustries.com

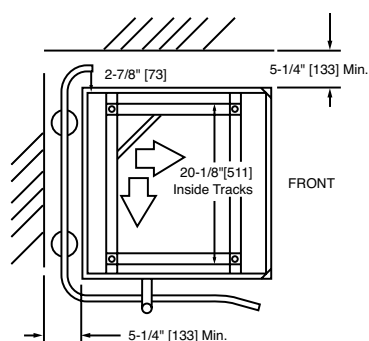
Door-type
Low Temperature
Dishwashing Machine

Champion®

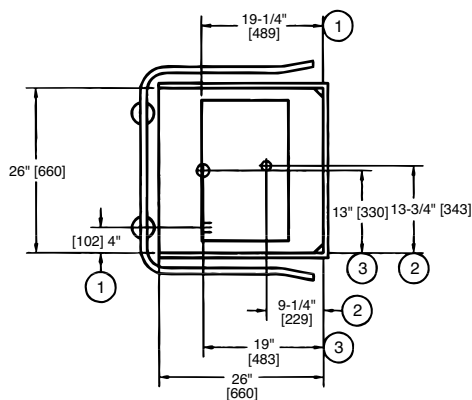
The Dishwashing Machine Specialists



Straight-through Configuration

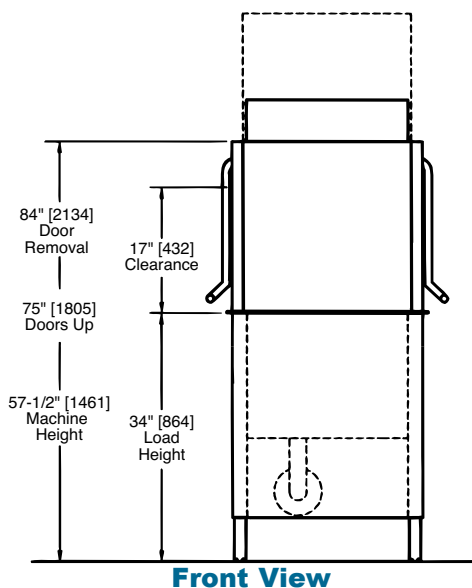


Corner Configuration

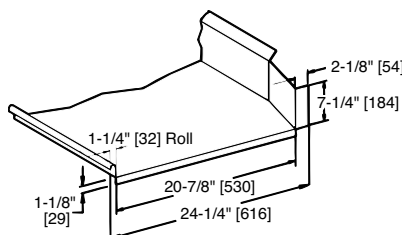


Plan View

Caution: Silver, aluminum and pewter are attacked by sodium hypochlorite (liquid bleach). Champion low temperature dishwashing machines are designed for liquid bleach solutions not exceeding 50 ppm.



Front View



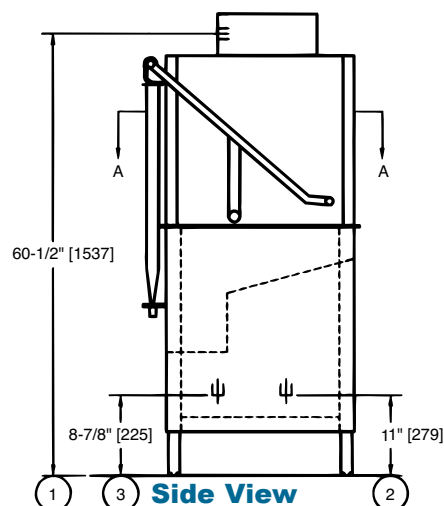
Typical Table Construction

Dimensions shown in inches and [millimeters]

Length between table connections: **26\"/>**

Volume crated: **51 cu. ft./1.45 cu.m.**

Shipping weight crated: **325 lbs./148 kg**



Side View

SPECIFICATIONS

Capacities

Racks per hr. (NSF rated)	55
Wash tank US gal. (imp. gal./liters)	9 (7.5/34)

Wash motor horsepower

1

Water consumption

Gal. per hr. (max. use)	
US gal. (imp. gal./liters)	66 (55/248)
Gal. per rack	
US gal. (imp. gal./liters)	1.2 (0.96/4.4)

Temperatures °F/°C

Wash	140/60
Rinse	140/60

Heating

Tank heat, electric (kW)	4.7
--------------------------	-----

Time cycle in seconds

Wash	45
Dwell	1
Rinse	14
Total cycle	60

Utilities

1	Electrical: (See Box)
2	Hot water: 3/4" NPT 140°F/60°C hot water connection. Flow pressure 20-22 psi. (138-151 kPa).
3	Drain: 2" O.D. connection. Max. flow 15 US gpm (12 imp. gpm/54 lpm.) 3/4" NPT machine return to boiler A. Steam Injector Condensate B. Steam Coil Condensate

For Electric Heat

Elec. Specs.	Rated Amps	Minimum Supply Ckt. Conductor Ampacity	Maximum Overcurrent Protective Device
115/60/1*	48	55	55
208/60/1	35	45	45
240/60/1	37	45	45
208/60/3	20	25	25
240/60/3	21	25	25
480/60/3	9	15	15
575/60/3	7	15	15

* 3kW wash tank heater

For Steam Heat

Elec. Specs.	Rated Amps	Minimum Supply Ckt. Conductor Ampacity	Maximum Overcurrent Protective Device
115/60/1	22	30	30
208/60/1	12	15	15
240/60/1	11	15	15
208/60/3	6	15	15
240/60/3	6	15	15
480/60/3	3	15	15
575/60/3	3	15	15

Warning: Plumbing and electrical connection should be made by qualified personnel who will observe all the applicable plumbing, sanitary and safety codes and the National Electrical Code.

Plumbing Note: Because of the variation in house-supplied water and steam pressure, pressure regulating valves (PRV's) for incoming water and steam supply are needed. The PRV's can be purchased from Champion or obtained locally.

Note: Water Hammer Arrestor (meeting ASSE-1010 standard or equivalent) to be supplied (by others) in common water supply line at service connection.

Due to an ongoing value analysis program at Champion, specifications contained in this catalog are subject to change without notice.

Champion Industries, Inc., P. O. Box 4149, Winston-Salem, NC 27115 • 336/661-1556 • Fax: 336/661-1979 • www.championindustries.com
2674 N. Service Road • Jordan Station, Ontario, Canada L0R 1S0 • 800/263-5798 • Fax: 905/562-4618