

Champion®

The Dishwashing Machine Specialists

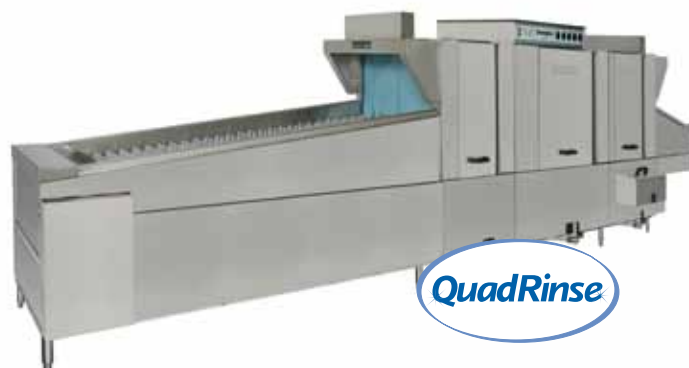
Project _____
Item No. _____
Quantity _____

STANDARD FEATURES

- **Multi speed** – 3 modes of operation to maximize savings
- All-purpose 29"-wide peg belt
- Dish capacities up to 13,129 dishes per hour (NSF Listed)
- Automatic tank fill
- Chemical dispensing equipment connection provisions
- Choice of tank heat: electric, steam coils or direct steam injectors
- Common hot water connection
- Common drain connection
- Common electric connection (separate connection required for optional electric booster and blower-dryer)
- One piece stainless steel wash/rinse manifold system, easy to remove
- Door safety switch
- Electric eye energy sentinel (idle pump shut-off)
- Easy-to-reach top-mounted controls
- Heavy-gauge stainless construction
- Low-water tank heat protection
- Push-button start-stop station – load end
- Recirculating flushing nozzles – load end with prewash
- Rinse saver device
- Conveyor shut-off shelf – unload end
- Stainless steel enclosure panels – front & ends
- Vent fan control connection provided

EEUCCW4

Upright 29" Conveyor Dishwashing Machine



Water Consumption as low as 65 GPH

SPECIFIER STATEMENT

Specified unit will be Champion model EEUCCW4 upright 29" conveyor water saver dishwashing machine.

Features automatic tank fill, chemical dispensing connection provisions, common water, drain and electrical connections, door safety switch, low water tank heat protection, rinse saver.

1 year parts and labor warranty.



2674 N. Service Road,
Jordan Station, Ontario, Canada L0R 1S0
Tel: 905-562-4195 Fax: 905/562-4618

Champion Industries, Inc.
3765 Champion Boulevard, Winston-Salem, NC 27105
Tel: 336/661-1556 Fax: 336/661-1979
www.championindustries.com



CH089

(1M) 4/10 Printed in U.S.A



EEUCCW4 SERIES UPRIGHT CONVEYORS

EEUCCW4

Upright 29" Conveyor
Dishwashing Machine

Champion®
The Dishwashing Machine Specialists

MODULAR SECTIONS: Right to Left Operation

Dimensions shown in inches and [millimeters]

EEUCCW4

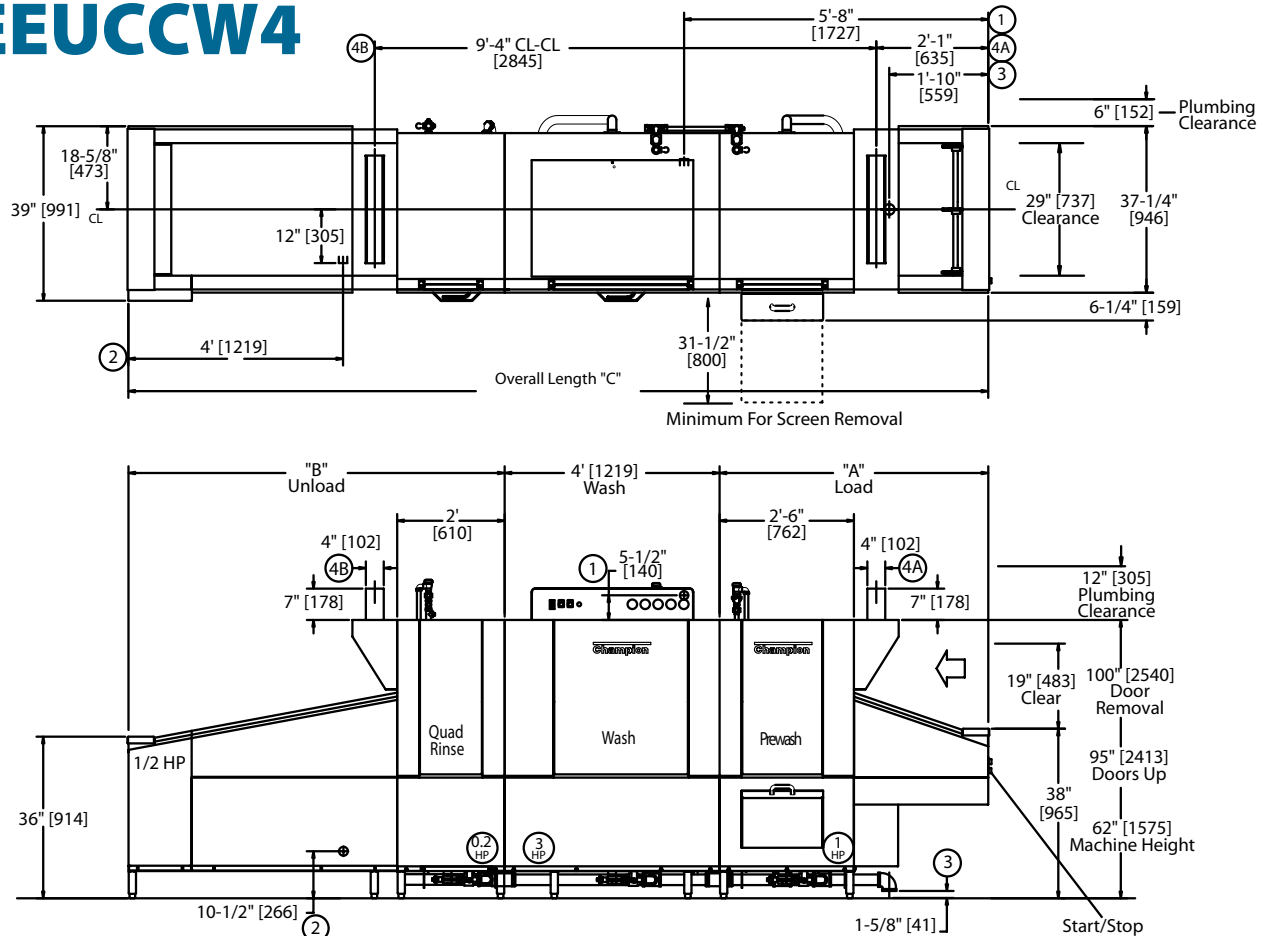


TABLE A - Machine Connection

Machine Only - Electric Heat			
Elec. Specs.	Rated Amps	Minimum Supply Ckt. Conductor Ampacity	Maximum Overcurrent Protective Device
208/60/3	119	150	150
240/60/3	102	150	150
480/60/3	52	70	70

Machine - Steam			
Elec. Specs.	Rated Amps	Minimum Supply Ckt. Conductor Ampacity	Maximum Overcurrent Protective Device
208/60/3	21	25	25
240/60/3	18	25	25
480/60/3	10	15	15

TABLE B - Booster Connection

40°F/22°C Rise – 15 kW Electric built-in booster			
Elec. Specs.	Rated Amps	Minimum Supply Ckt. Conductor Ampacity	Maximum Overcurrent Protective Device
208/60/3	42	60	60
240/60/3	36	45	45
480/60/3	18	25	25

70°F/39°C Rise – 25 kW Electric built-in booster			
Elec. Specs.	Rated Amps	Minimum Supply Ckt. Conductor Ampacity	Maximum Overcurrent Protective Device
208/60/3	70	90	90
240/60/3	60	80	80
480/60/3	30	40	40

Notes:

- Load Section (A) Standard 5', contains 30" Prewash
- Prewash also available in a 48" HD section
- Non-standard load section available in 12" increments
- Minimum load length 5' (includes 30" prewash)
- Unload Section (B) Standard 5 ft contains 24" Aux.
- Rinse and 36" belt, available in 12" increments
- Built in electric booster requires a 5' minimum unload
- Built in steam booster requires a minimum 6' unload
- Blow dryer section adds 4' to overall length of machine

Contact Factory for additional voltages.

Due to an ongoing value analysis program at Champion, specifications contained in this catalog are subject to change without notice.

Champion Industries, Inc., 3765 Champion Boulevard, Winston-Salem, NC 27105 • 336/661-1556 • Fax: 336/661-1979 • www.championindustries.com
2674 N. Service Road, Jordan Station, Ontario, Canada L0R 1S0 • 905/562-4195 • Fax: 905/562-4618

Champion®

The Dishwashing Machine Specialists

EEUCCW4

Upright 29" Conveyor
Dishwashing Machine

Shipping weight crated: **150 lbs./ft. [68kg./m.]**

Height with doors up: **95"**

Height to remove doors: **100"**

SPECIFICATIONS

	Eco Clean	Extended Clean	Express Clean
Capacities			
Dishes per hr. (NSF rated)	8,700	8,700	13,129
Conveyor speed (ft./min.)	5.5	5.5	8.3
Water consumption			
Gal. per hr. (max. use)	65	112	112
Motor horsepower			
Drive			1/2 Hp
Prewash 30" [762]			1 Hp
Prewash 48" [1219]			3 Hp
Wash			3 Hp
Auxiliary Rinse			1/5 Hp
Temperatures °F			
Wash (min.)			160
Auxiliary Rinse (min.)			165
Final rinse (min.)			180
Heating			
Tank heat	Steam	Electric	
Wash tank	125 lbs/hr.	25 kW	
Auxiliary rinse	50 lbs/hr.	10 kW	
Electric booster (kW required for 40°F rise)		15	
Electric booster (kW required for 70°F rise)		25	
Steam booster (lbs./hr. required for 40°F rise)		75	
Steam booster (lbs./hr. required for 70°F rise)		125	
Venting			
Minimum cfm, load end		300	
Minimum cfm, unload end		800	

Utilities EEUCCW8

1 Electrical	A Machine connection (see table A) B Booster connection (see table A)
2 Hot Water	3/4" NPT 180°F hot water connection. (For machine without built-in booster)
3 Drain	2" NPT connection
4 Vents	A Load end: 300 CFM 1/4" S.P. B Unload end: 800 CFM 1/4" S.P. With blower-dryer, increase room ventilation by 600 CFM.

Note Plus size hot water heater for express clean usage.

Booster connections may vary. Contact the Factory.

Standard Voltages (Specify choice): 208/60/3, 240/60/3, and 480/60/3. Available in 3-phase only. For non-standard 3-phase voltages, contact the Factory.

Plumbing Notes Because of the variation in house-supplied water pressure, a water pressure regulating valve (PRV) is needed (water PRV is standard). Steam PRV's may be required for pressure higher than 30 psi. The PRVs can either be purchased from Champion or obtained locally.

Warning Plumbing and electrical connections should be made by qualified personnel who will observe all the applicable plumbing, sanitary, safety codes and the National Electrical Code.

Note Water Hammer Arrestor (meeting ASSE-1010 standard or equivalent) to be supplied (by others) in common water supply line at service connection.

Venting Notes

Fabricated duct size: 3-7/8" x 23-7/8" (outside dimensions)

Due to an ongoing value analysis program at Champion, specifications contained in this catalog are subject to change without notice.

Champion Industries, Inc., 3765 Champion Boulevard, Winston-Salem, NC 27105 • 336/661-1556 • Fax: 336/661-1979 • www.championindustries.com
2674 N. Service Road, Jordan Station, Ontario, Canada L0R 1S0 • 905/562-4195 • Fax: 905/562-4618



EEUCCW4

Upright 29" Conveyor
Dishwashing Machine



Champion®
The Dishwashing Machine Specialists

OPTIONS & ACCESSORIES

- ☐ Tank heat; choices of electric, steam coil or steam injectors
- ☐ Booster Heaters – stainless steel (completely inter-plumbed, controls are inter-wired)
 - ☐ Electric: (40°F rise or 70°F rise)
 - ☐ Steam: (40°F rise or 70°F rise)
- ☐ 48" Blower Dryer, electric or steam (add 4' to overall length)
- ☐ Belts: standard peg belt, flat belt, thermal tray belt, silverware belt, belts with upper cross rods, and other select combination belts
- ☐ Start/Stop station, unload end
- ☐ Back panels, stainless steel
- ☐ Cold water thermostat (for pre-wash)
- ☐ External scrap bucket on 48" pre-wash (standard on 30" pre-wash)
- ☐ External scrap bucket on wash tank
- ☐ Insulated hoods, lower panels
- ☐ Motor pumps, 2 or 3 Hp optional in lieu of 1 Hp on pre-wash
- ☐ Bumper rail, machine mounted
- ☐ Steam pressure regulating valve
- ☐ Drain water tempering kit
- ☐ Drain interlocks
- ☐ Unmounted fused disconnect switch for machine and/or booster

**Multi-Speed –**

3 modes of operations to maximize savings

- Eco Clean – lowest water usage in the industry
- Extended Clean – for heavily soiled items
- Express Clean – highest production in the industry

'USGBC' and related logo is a trademark owned by the U.S. Green Building Council and is used by permission.

Due to an ongoing value analysis program at Champion, specifications contained in this catalog are subject to change without notice.

Champion Industries, Inc., 3765 Champion Boulevard, Winston-Salem, NC 27105 • 336/661-1556 • Fax: 336/661-1979 • www.championindustries.com
2674 N. Service Road, Jordan Station, Ontario, Canada L0R 1S0 • 905/562-4195 • Fax: 905/562-4618