

PP-28

Pot, Pan, Utensil
Door Type
Washing Machine

STANDARD FEATURES

- Balanced door system
- Detergent/chemical connection provisions
- Door safety switch on each door
- Enclosure panels (front and sides)
- External lift-out refuse basket
- Fully automatic wash and rinse cycle
- Hold-down grid
- 7.5-Hp drip-proof pump motor
- Interchangeable upper and lower wash and rinse arms
- Low water tank heat protection
- Recessed, front-mounted controls
- Six-inch diameter vent connection
- Electric wash tank heat

OPTIONS & ACCESSORIES

- ☐ **Corner Operation**
- ☐ **Straight-through Operation**
- ☐ **Front-loading Operation**
- ☐ **Ten-inch Shelf** on front-loading machine
- ☐ **Steam Coil** tank heat
- ☐ **Steam Injector** tank heat
- Boosters, Stainless Steel** (completely interplumbed, controls are interwired)
 - ☐ **Steam: 40°F-70°F Rise** (built-in) (externally mounted with cover for corner model)
 - ☐ **Electric: 40°F Rise** (built-in) (externally mounted with cover for corner model)
 - ☐ **Electric: 70°F Rise** (externally mounted with cover)
- ☐ **Exhaust Fan**, 1/3 Hp
- ☐ **Racks, Stainless Steel** (5" x 28" x 28")

NOTE: ALL electric boosters require separate electrical connection.



SPECIFIER STATEMENT

Specified unit will be Champion model PP-28 pot, pan, utensil door type washing machine.

Features adjustable wash cycle depending on solid wares from 2 to 5 minutes, revolving upper and lower high pressure spray arms, large wash chamber spacious enough to accommodate 140 quart mixing bowls, fully automatic operation, and made entirely of heavy gauge stainless steel from the base to spray arms. One year parts and labor warranty.

Champion Industries, Inc.
P. O. Box 4149, Winston-Salem, NC 27115
Tel: 336/661-1556 Fax: 336/661-1979
www.championindustries.com

PP-28

Pot, Pan, Utensil
Door Type
Washing Machine

Champion®

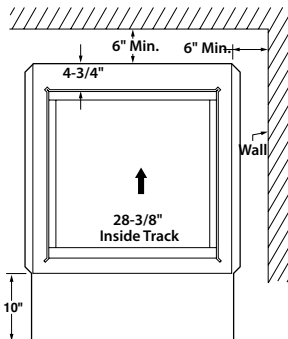
The Dishwashing Machine Specialists

Volume crated: **111 cu. ft.**
Shipping weight crated: **1100 lbs.**
Shipping weight crated
with built-in booster: **1200 lbs.**

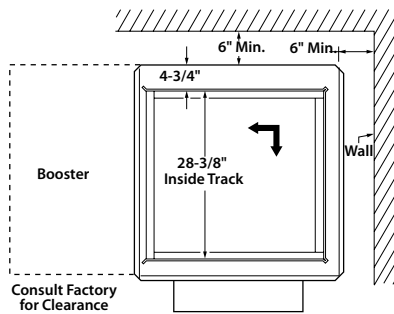
Dimensions shown in inches

Details, Dimensions & Connections

Front Loading Operation



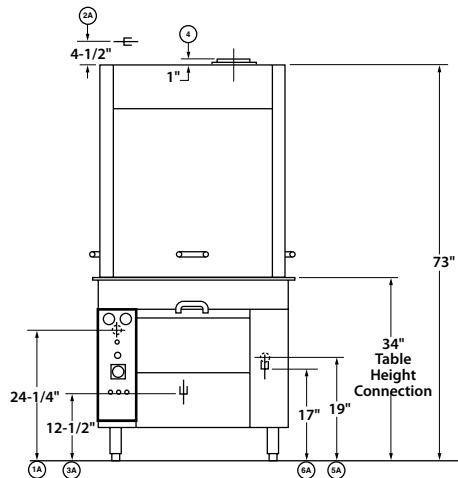
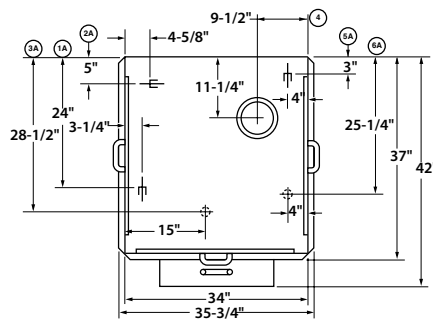
* With built-in booster, allow approximately 24" clearance for ease of use.



Corner Operation

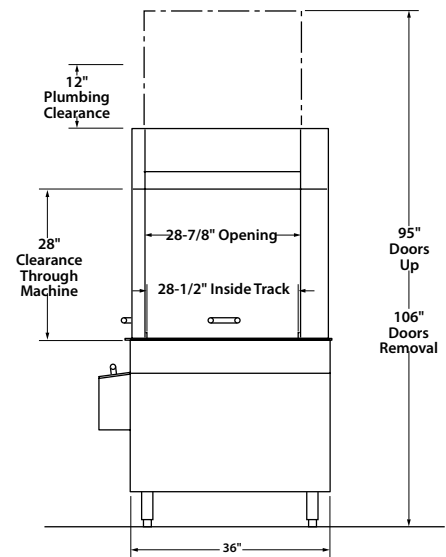
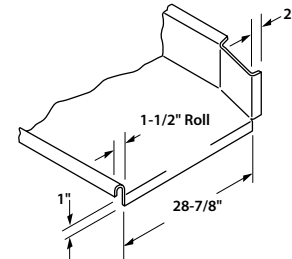
Electric or Steam Heat

Plan View



Front View

Typical Table Construction



Side View

Warning: Plumbing and electrical connections should be made by qualified workmen who will observe all the applicable plumbing, sanitary, safety codes and the National Electrical Code.

Plumbing Notes: Because of the variation in house-supplied steam and water pressures, steam and water pressure regulating valves (PRVs) are needed (water PRV is standard on model with built-in booster). The PRVs can either be purchased from Champion or obtained locally.

Note: Water Hammer Arrestor (meeting ASSE-1010 standard or equivalent) to be supplied (by others) in common water supply line at service connection.

Machine Load Amps

| Voltage | Electric Heat | Steam Heat | Electric Heat & Exhaust Fan | Steam Heat & Exhaust Fan |
|----------|---------------|------------|-----------------------------|--------------------------|
| 208/60/3 | 50 | 22 | 53 | 25 |
| 240/60/3 | 45 | 21 | 48 | 24 |
| 480/60/3 | 22 | 11 | 24 | 13 |

Utilities

1 Electrical

A See box (1) for machine connection.
B See box (2) for separate built-in 27 kW electric booster connection.

2 Hot Water

A 1" NPT 180°F connection. Flow pressure 20-22 psi/82.5 gph.
B 1" NPT 140°F connection. Flow pressure 20-22 psi/82.5 gph.
Unmounted water PRV provided.

3 Drain

A 1-1/2" NPT connection. Maximum flow 15 gpm.
B 3/4" NPT steam booster relief to open drain.

4 Vent

6" diameter. 200 cfm. (Contact the factory for optional exhaust fan connections.)

5 Steam

A 3/4" NPT connection. Flow pressure 15-30 psi.
B 1-1/4" NPT connection (steam heat, steam booster).

6 Condensate

A 1/2" NPT machine connection return to boiler (steam coil heat only).
B 3/4" NPT machine connection return to boiler (steam heat, steam booster).

Pot, Pan, Utensil
Door Type
Washing Machine

Champion®
The Dishwashing Machine Specialists

Steam Booster

Technical drawing showing the front view of a table. The drawing includes dimensions and callouts for various parts:

- Overall width: 35-3/4"
- Overall height: 42"
- Top panel width: 34"
- Top panel height: 11-1/4"
- Top panel thickness: 3/4"
- Top panel depth: 8-3/4"
- Top panel depth (left side): 9-1/2"
- Top panel depth (right side): 16"
- Top panel depth (bottom right): 21-1/2"
- Top panel depth (bottom left): 30-3/8"
- Top panel depth (bottom center): 37"
- Top panel depth (bottom right corner): 42"
- Top panel depth (bottom left corner): 28-1/2"
- Top panel depth (bottom left corner): 24"
- Top panel depth (bottom left corner): 3-1/4"
- Top panel depth (bottom left corner): 4-1/4"
- Top panel depth (bottom left corner): 7-3/4"
- Top panel depth (bottom left corner): 2-3/4"
- Top panel depth (bottom left corner): 15"
- Top panel depth (bottom left corner): 34"
- Top panel depth (bottom left corner): 35-3/4"
- Top panel depth (bottom left corner): 1"
- Top panel depth (bottom left corner): 4-1/2"
- Top panel depth (bottom left corner): 24-1/4"
- Top panel depth (bottom left corner): 12-1/2"
- Top panel depth (bottom left corner): 10-1/2"
- Top panel depth (bottom left corner): 6"
- Top panel depth (bottom left corner): 8-1/2"
- Top panel depth (bottom left corner): 34" Table Height Connection

[illegible]

| Voltage | PP-28 |
|----------|-------|
| 208/60/3 | 75 |
| 240/60/3 | 65 |
| 480/60/3 | 34 |

Rinse (seconds)

16

Champion Industries, Inc., P. O. Box 4149, Winston-Salem, NC 27115 • 336/661-1556 • Fax: 336/661-1979 • www.championindustries.com

PP-28

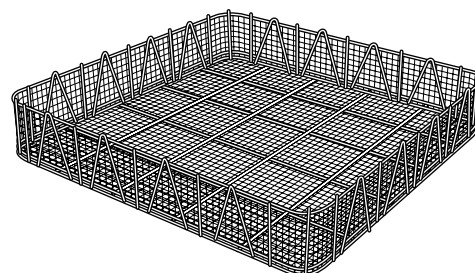
Pot, Pan, Utensil
Door Type
Washing Machine

Champion®

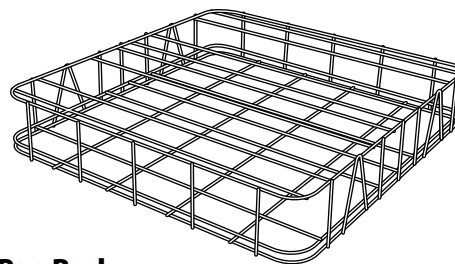
The Dishwashing Machine Specialists

ACCESSORIES

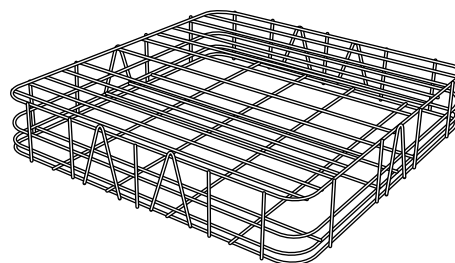
- | | |
|---|------------|
| <input type="checkbox"/> Rack Basket (utensils and loose items) | P/N 109584 |
| <input type="checkbox"/> Rack Pan (baking pans) | P/N 109585 |
| <input type="checkbox"/> Rack Bake Sheet (baking sheets) | P/N 109587 |
| <input type="checkbox"/> Rack Utility (large pots and pans) | P/N 109586 |



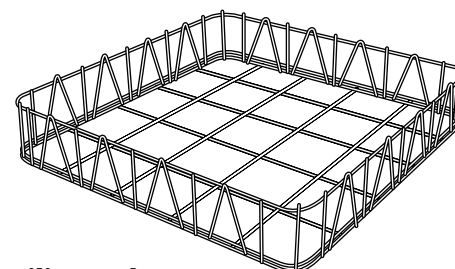
Basket Rack



Pan Rack



Bake Sheet Rack



Utility Rack