

# Champion®

The Dishwashing Machine Specialists

Project \_\_\_\_\_  
Item No. \_\_\_\_\_  
Quantity \_\_\_\_\_

## STANDARD FEATURES

- Total stainless steel construction
- Air filters – washable for extended life
- Insulated stainless steel enclosure panels
- Two – 3 Hp high-velocity blower motors
- Right or left operation
- Six (6) casters
- 9 ft. cord with twist lock plug and unmounted receptacle
- Tray accumulator limit switch

## CTD-1800H

No Heat  
Horizontal Loading  
Tray Dryer



CTD-1800H TRAY DRYER

## OPTIONS & ACCESSORIES

☐ 480/60/3 Voltage

## SPECIFIER STATEMENT

Specified unit will be Champion model CTD-1800H no heat horizontal loading tray dryer.

Features washable air filters for extended life, two - 3 Hp motors, and tray accumulator limit switch. Constructed of Type 304 SST. 1 year parts and labor warranty.

Champion Industries, Inc.  
P. O. Box 4149, Winston-Salem, NC 27115  
Tel: 800/532-8591 Fax: 336/661-1979  
[www.championindustries.com](http://www.championindustries.com)

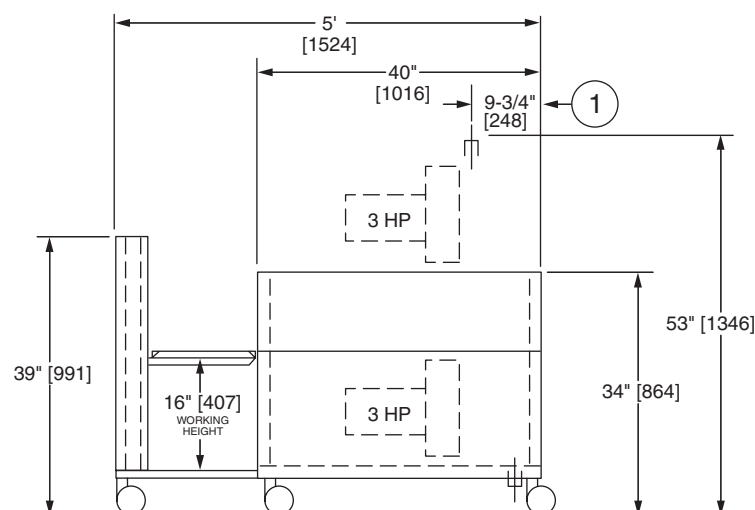
# CTD-1800H

No Heat  
Horizontal Loading  
Tray Dryer

**Champion®**  
The Dishwashing Machine Specialists

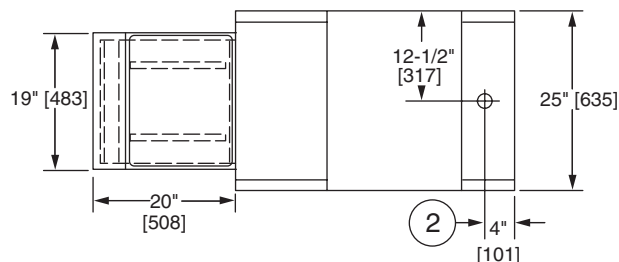
Volume crated: **97.5 cu. ft.**  
Shipping weight crated: **700 lbs.**

Dimensions shown in inches and [millimeters]

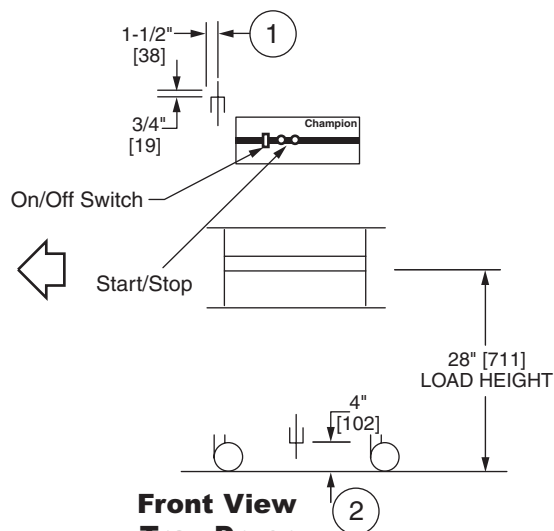


**Side View  
Tray Accumulator**

**Side View  
Tray Dryer**

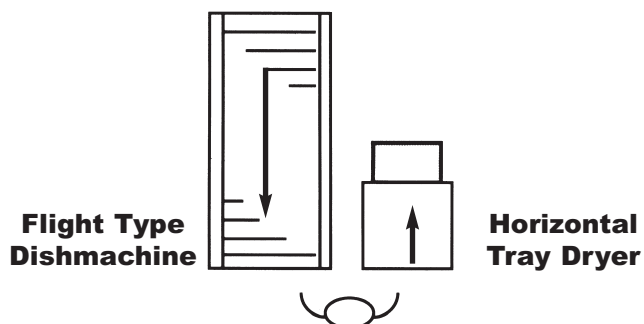


**Plan View Tray  
Accumulator**



**Front View  
Tray Dryer**

## Typical Layout for Free-Standing Tray Dryer System



**Manual Tray Loading, Self Unloading onto  
an Integral Tray Accumulator**

## Utilities

- |                     |  |
|---------------------|--|
| <b>1 Electrical</b> | 9 ft. cord with twist-lock plug and unmounted receptacle |
| <b>2 Drain</b>      | 1 3/8" I.D. hose   |

**Note:** Unit will accommodate standard 14" x 18" or 15" x 20" trays. Specify tray size at time of order.  
For other sizes and other voltages, contact the Factory.

## SPECIFICATIONS

<b>Capacities</b>	1800 Trays per hr.
<b>Motor</b>	2 High-Velocity Blowers – 3 Hp each
<b>Voltage</b>	208-230/60/3
<b>Maximum Load Amps</b>	19