

Specifications

Capacity

Cycle Time (seconds) (NSF rated)	50
Racks per hr. (NSF rated)	45

Motor horsepower

Wash	1/2
------	-----

Water consumption

U.S. Gal. per hr. (Max. use)	36
U.S. Gal. per rack	0.8

Temperatures °F

Wash	150
Rinse	180

Heating

Tank heat, electric (kW)	3
Electric booster (kW for 70°F rise)	18
Tank heat, steam	
(lbs./hr. @15 PSI flow pressure)	10
Steam booster (lbs/hr. for 70°F rise)	36

Time cycle in seconds

Wash	33
Rinse	12
Dwell	5
Total cycle	50

Standard 16" x 16" dishrack



USN10
(shown with electric
booster heater)

USN10

Undercounter
High Temperature
Dishwashing Machine
(for use with optional electric or
steam booster heater)



High Temperature in a Compact Design

Fast Operation, Outstanding results every time

The USN10 features a fast 50 second timed cycle. Operation is fully automatic with an NSF rated capacity of 45 racks/hour.

Interchangeable stainless steel wash arms

The USN10 also features interchangeable stainless steel wash arms for easy installation and clean-up. Easy to remove thumbscrews make removal fast and simple.

Low Water Consumption

The USN10 only uses 0.8 US gallons of water to produce a sparkling clean rack of ware. The upper and lower revolving spray system provides superior washing results.

Optional Electric or Steam Heat

The USN10 is available in either steam or electric tank heat and electric or steam external booster for 180°F final rinse water for sanitizing.

Standard Features

Independent stainless steel interchangeable upper and lower wash arms
Door safety switch
Line strainer (unmounted)
Low-water tank heat protection
Front service accessibility
Remote mounted control cabinet

NSN's:

USN10 Electric- 7320-01-506-6252
USN10 Steam- 7320-01-506-6255

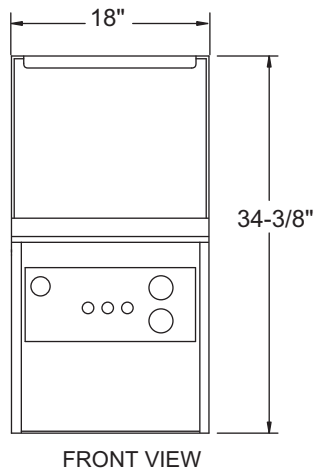
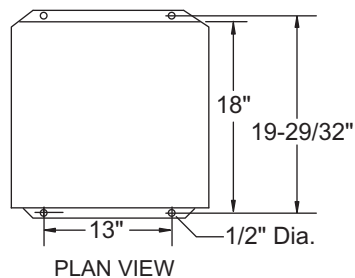
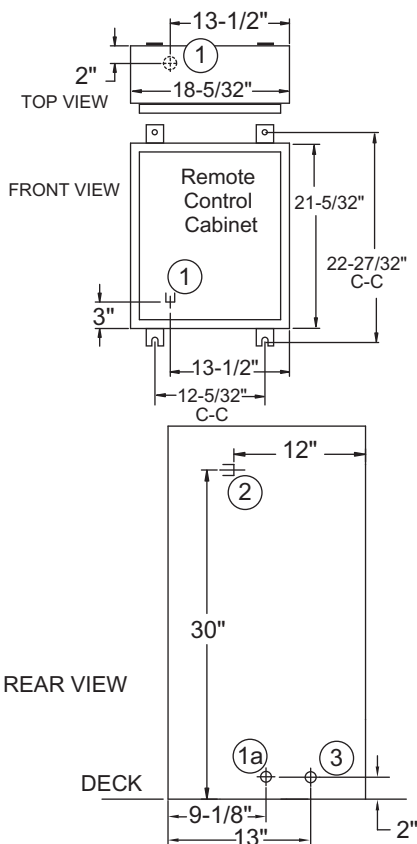
USN10

Undercounter High Temperature Dishwashing Machine

(for use with optional electric or steam booster heater)

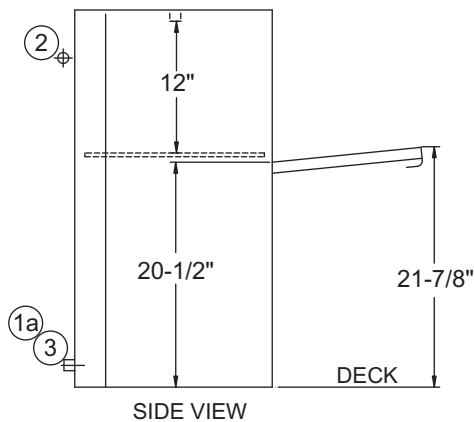
WARNING: Plumbing and electrical connections should be made by qualified personnel who will observe all the applicable plumbing, sanitary, safety codes and National Electrical Code.

Electric

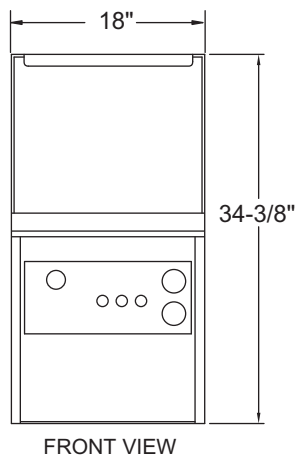
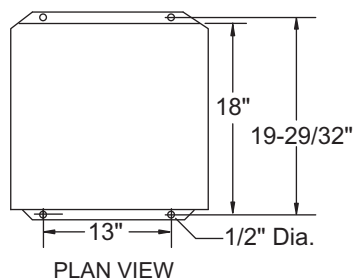
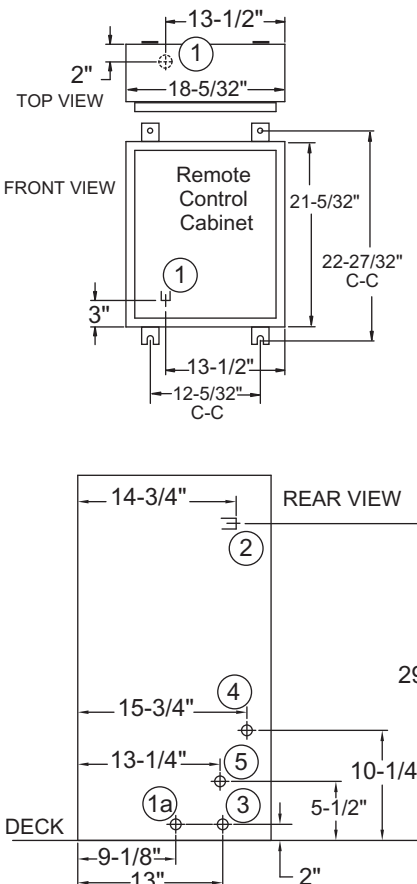


Utilities- with electric tank heat	
1	Electrical: 440V/60/3: Remote mounted control box; 6 Amps; Full load Electric booster; 24 Amps; Full load
1a	1" Sealrite conduit connection
2	Water: 3/4" NPT 120°F minimum hot water connection; Flow pressure: 20-22 psi.
3	Drain: 1" NPT machine connection; Max. flow - 15 US GPM.

Ship Wt. 200lbs.
Cubic Volume. 18 ft.³



Steam



Utilities- with steam tank heat	
1	Electrical: 440V/60/3: Remote mounted control box. 1.5 Amps; Full load Steam booster 0.5 Amps Full load
1a	1" Sealrite conduit connection
2	Water: 3/4" NPT 180°F minimum hot water connection; Flow pressure: 20-22 psi.
3	Drain: 1" NPT machine connection; Max. flow - 15 US GPM.
4	Steam: 3/4" NPT machine connection; Flow pressure 15-30 PSI (Steam coil)
5	Condensate: 1/2" NPT machine connection; return to boiler.

Ship Wt. 220 lbs.
Cubic Volume. 18 ft.³

