



## F5 and F15 Series

### Service and Installation Manual

Please read this manual completely before attempting to install or operate this equipment!  
Notify carrier of damage! Inspect all components immediately. See page 2.



**F5 and F15 SERIES**  
Drop-In and Serviserv Display Cases



**IMPORTANT INFORMATION  
READ BEFORE USE  
PLEASE SAVE THESE INSTRUCTIONS!**

Effective Date June 2008  
Enodis®

## Contents

Serial Number Location .....	2
Receiving & Inspecting Equipment .....	2
Specifications	
F5 Series .....	3
F15 Series .....	4
Installation	
F5 Series .....	5
F15 Series .....	6
Shelf Installation .....	7
Display Lock Operation .....	7
General Operation .....	7
Pressure Control Settings .....	7
Maintenance .....	8
Sliding Door Assembly Maintenance .....	9
Sliding Door Removal and Reinstall .....	9
Condenser Air Flow .....	10
Pike Door Components List .....	11
Condensing Unit Assembly .....	12
Fluorescent Fixture .....	13
Door Assembly — Servview Bases .....	13
Coil Assembly .....	14
Replacement Parts .....	15
Wiring Diagram .....	16
Standard Labor Guidelines .....	17
Standard Warranties .....	18-19

## Serial Number Location

The serial number on all self-contained F5 Series units is located near the condensing unit. On all remote F5 Series units the serial number is located on the drop-in frame.

The serial number on all self-contained F15 Series units is located behind the compressor housing. On all remote F15 Series units the serial number is located behind the six inch panel in the base.

Always have the serial number of your unit available when calling for parts or service. A complete list of authorized Delfield parts depots is available at [www.delfield.com](http://www.delfield.com).

©2008 The Delfield Company. All rights reserved. Reproduction without written permission is prohibited.

<b>SERIAL #</b>
<b>MODEL #</b>
<b>INSTALLATION DATE:</b>

## Receiving And Inspecting The Equipment

Even though most equipment is shipped crated, care should be taken during unloading so the equipment is not damaged while being moved into the building.

1. Visually inspect the exterior of the package and skid or container. Any damage should be noted and reported to the delivering carrier immediately.
2. If damaged, open and inspect the contents with the carrier.
3. In the event that the exterior is not damaged, yet upon opening, there is concealed damage to the equipment notify the carrier. Notification should be made verbally as well as in written form.
4. Request an inspection by the shipping company of the damaged equipment. This should be done within 10 days from receipt of the equipment.
5. Check the lower portion of the unit to be sure legs or casters are not bent.

6. Also open the compressor compartment housing and visually inspect the refrigeration package. Be sure lines are secure and base is still intact.
7. Freight carriers can supply the necessary damage forms upon request.
8. Retain all crating material until an inspection has been made or waived.

### Uncrating the Equipment

First cut and remove the banding from around the crate. Remove the front of the crate material, use of some tools will be required. If the unit is on legs remove the top of the crate as well and lift the unit off the skid. If the unit is on casters it can be "rolled" off the skid.

## F5 Series Specifications

### 24" (61cm) Deep Remote Drop-In Refrigerated Display Cases

MODEL	L	D	H	VOLTS/ HERTZ/ PHASE	AMPS	CABINET LOAD BTU/ HOUR	EVAPORATOR DISPLAY CAPACITY BTU	°TD	TEMP
F5MR48N	48" (121.9cm)	24" (61.0cm)	42" (106.7cm)	115/60/1	4.0	1215	150	20°	15°
F5SR48N	48" (121.9cm)	24" (61.0cm)	42" (106.7cm)	115/60/1	4.0	1867	150	20°	15°
F5PR48N	48" (121.9cm)	24" (61.0cm)	42" (106.7cm)	115/60/1	4.0	1945	150	20°	15°
F5MR72N	72" (182.9cm)	24" (61.0cm)	42" (106.7cm)	115/60/1	4.0	1783	450	13°	22°
F5SR72N	72" (182.9cm)	24" (61.0cm)	42" (106.7cm)	115/60/1	4.0	2791	450	13°	22°
F5PR72N	72" (182.9cm)	24" (61.0cm)	42" (106.7cm)	115/60/1	4.0	2884	450	13°	22°

### 24" (61cm) Deep Self-Contained Drop-In Refrigerated Display Cases

MODEL	L	D	H	VOLTS/ HERTZ/ PHASE	AMPS	CABINET LOAD BTU/ HOUR	SYSTEM CAPACITY BTU/HOUR	H.P.	R404A CHARGE, OZ.	NEMA PLUG
F5MC48N	48" (121.9cm)	24" (61.0cm)	57.5" (146.1cm)	115/60/1	12.0	1215	2970	1/2	32	5-15P
F5SC48N	48" (121.9cm)	24" (61.0cm)	57.5" (146.1cm)	115/60/1	12.0	1867	2970	1/2	32	5-15P
F5PC48N	48" (121.9cm)	24" (61.0cm)	57.5" (146.1cm)	115/60/1	12.0	1945	2970	1/2	32	5-15P
F5MC72N	72" (182.9cm)	24" (61.0cm)	57.5" (146.1cm)	115/60/1	16.0	1783	5821	3/4	48	5-20P
F5SC72N	72" (182.9cm)	24" (61.0cm)	57.5" (146.1cm)	115/60/1	16.0	2791	5821	3/4	48	5-20P
F5PC72N	72" (182.9cm)	24" (61.0cm)	57.5" (146.1cm)	115/60/1	16.0	2884	5821	3/4	48	5-20P

### 30" (76.2cm) Deep Remote Drop-In Refrigerated Display Cases

MODEL	L	D	H	VOLTS/ HERTZ/ PHASE	AMPS	CABINET LOAD BTU/ HOUR	EVAPORATOR DISPLAY CAPACITY BTU	°TD	TEMP
F5MR48D	48" (121.9cm)	30" (76.2cm)	42" (106.7cm)	115/60/1	4.0	1282	150	20°	15°
F5SR48D	48" (121.9cm)	30" (76.2cm)	42" (106.7cm)	115/60/1	4.0	1934	150	20°	15°
F5PR48D	48" (121.9cm)	30" (76.2cm)	42" (106.7cm)	115/60/1	4.0	2012	150	20°	15°
F5MR72D	72" (182.9cm)	30" (76.2cm)	42" (106.7cm)	115/60/1	4.0	1870	450	13°	22°
F5SR72D	72" (182.9cm)	30" (76.2cm)	42" (106.7cm)	115/60/1	4.0	2878	450	13°	22°
F5PR72D	72" (182.9cm)	30" (76.2cm)	42" (106.7cm)	115/60/1	4.0	2971	450	13°	22°

### 30" (76.2cm) Deep Self-Contained Drop-In Refrigerated Display Cases

MODEL	L	D	H	VOLTS/ HERTZ/ PHASE	AMPS	CABINET LOAD BTU/ HOUR	SYSTEM CAPACITY BTU/HOUR	H.P.	R404A CHARGE, OZ.	NEMA PLUG
F5MC48D	48" (121.9cm)	30" (76.2cm)	57.5" (146.1cm)	115/60/1	12.0	1282	2970	1/2	32	5-15P
F5SC48D	48" (121.9cm)	30" (76.2cm)	57.5" (146.1cm)	115/60/1	12.0	1934	2970	1/2	32	5-15P
F5PC48D	48" (121.9cm)	30" (76.2cm)	57.5" (146.1cm)	115/60/1	12.0	2012	2970	1/2	32	5-15P
F5MC72D	72" (182.9cm)	30" (76.2cm)	57.5" (146.1cm)	115/60/1	16.0	1870	5821	3/4	48	5-20P
F5SC72D	72" (182.9cm)	30" (76.2cm)	57.5" (146.1cm)	115/60/1	16.0	2878	5821	3/4	48	5-20P
F5PC72D	72" (182.9cm)	30" (76.2cm)	57.5" (146.1cm)	115/60/1	16.0	2971	5821	3/4	48	5-20P

**M** = Mirror Back • **P** = Pass Thru • **S** = See Thru • **R** = Remote • **C** = Self-Contained • **N** = Narrow • **D** = Deep 30"



# F15 Series Specifications

## 24" (61cm) Deep Remote Service Refrigerated Display Cases

MODEL	L	D	H	VOLTS/ HERTZ/ PHASE	AMPS	CABINET LOAD BTU/ HOUR	EVAPORATOR DISPLAY CAPACITY			EVAPORATOR BASE CAPACITY		
							BTU	°TD	TEMP	BTU	°TD	TEMP
F15MR48N	48" (121.9cm)	31.5" (80.0cm)	78" (198.1cm)	115/60/1	4.0	1644	200	23°	12°	120	30°	5°
F15SR48N	48" (121.9cm)	33.38" (84.8cm)	78" (198.1cm)	115/60/1	4.0	2296	200	23°	12°	120	30°	5°
F15PR48N	48" (121.9cm)	33.38" (84.8cm)	78" (198.1cm)	115/60/1	4.0	2374	200	23°	12°	120	30°	5°
F15MR72N	72" (182.9cm)	31.5" (80.0cm)	78" (198.1cm)	115/60/1	4.0	2491	450	13°	22°	120	30°	5°
F15SR72N	72" (182.9cm)	33.38" (84.8cm)	78" (198.1cm)	115/60/1	4.0	3499	450	13°	22°	120	30°	5°
F15PR72N	72" (182.9cm)	33.38" (84.8cm)	78" (198.1cm)	115/60/1	4.0	3592	450	13°	22°	120	30°	5°

## 24" (61cm) Deep Self-Contained Service Refrigerated Display Cases

MODEL	L	D	H	VOLTS/ HERTZ/ PHASE	AMPS	CABINET LOAD BTU/ HOUR	SYSTEM CAPACITY BTU/HOUR	H.P.	R404A CHARGE OZ.	NEMA PLUG
F15MC48N	48" (121.9cm)	31.5" (80.0cm)	78" (198.1cm)	115/60/1	16.0	1569	8146	3/4	48	5-20P
F15SC48N	48" (121.9cm)	33.38" (84.8cm)	78" (198.1cm)	115/60/1	16.0	2221	8146	3/4	48	5-20P
F15PC48N	48" (121.9cm)	33.38" (84.8cm)	78" (198.1cm)	115/60/1	16.0	2299	8146	3/4	48	5-20P
F15MC72N	72" (182.9cm)	31.5" (80.0cm)	78" (198.1cm)	115/60/1	16.0	2361	9422	3/4	48	5-20P
F15SC72N	72" (182.9cm)	33.38" (84.8cm)	78" (198.1cm)	115/60/1	16.0	3369	9422	3/4	48	5-20P
F15PC72N	72" (182.9cm)	33.38" (84.8cm)	78" (198.1cm)	115/60/1	16.0	3462	9422	3/4	48	5-20P

## 30" (76.2cm) Deep Remote Service Refrigerated Display Cases

MODEL	L	D	H	VOLTS/ HERTZ/ PHASE	AMPS	CABINET LOAD BTU/ HOUR	EVAPORATOR DISPLAY CAPACITY			EVAPORATOR BASE CAPACITY		
							BTU	°TD	TEMP	BTU	°TD	TEMP
F15MR48D	48" (121.9cm)	31.5" (80.0cm)	78" (198.1cm)	115/60/1	4.0	1711	200	23°	12°	120	30°	5°
F15SR48D	48" (121.9cm)	33.38" (84.8cm)	78" (198.1cm)	115/60/1	4.0	2363	200	23°	12°	120	30°	5°
F15PR48D	48" (121.9cm)	33.38" (84.8cm)	78" (198.1cm)	115/60/1	4.0	2441	200	23°	12°	120	30°	5°
F15MR72D	72" (182.9cm)	31.5" (80.0cm)	78" (198.1cm)	115/60/1	4.0	2578	450	13°	22°	120	30°	5°
F15SR72D	72" (182.9cm)	33.38" (84.8cm)	78" (198.1cm)	115/60/1	4.0	3586	450	13°	22°	120	30°	5°
F15PR72D	72" (182.9cm)	33.38" (84.8cm)	78" (198.1cm)	115/60/1	4.0	3679	450	13°	22°	120	30°	5°

## 30" (76.2cm) Deep Self-Contained Service Refrigerated Display Cases

MODEL	L	D	H	VOLTS/ HERTZ/ PHASE	AMPS	CABINET LOAD BTU/ HOUR	SYSTEM CAPACITY BTU/HOUR	H.P.	R404A CHARGE OZ.	NEMA PLUG
F15MC48D	48" (121.9cm)	31.5" (80.0cm)	78" (198.1cm)	115/60/1	16.0	1636	8146	3/4	48	5-20P
F15SC48D	48" (121.9cm)	33.38" (84.8cm)	78" (198.1cm)	115/60/1	16.0	2288	8146	3/4	48	5-20P
F15PC48D	48" (121.9cm)	33.38" (84.8cm)	78" (198.1cm)	115/60/1	16.0	2366	8146	3/4	48	5-20P
F15MC72D	72" (182.9cm)	31.5" (80.0cm)	78" (198.1cm)	115/60/1	16.0	2448	9422	3/4	48	5-20P
F15SC72D	72" (182.9cm)	33.38" (84.8cm)	78" (198.1cm)	115/60/1	16.0	3456	9422	3/4	48	5-20P
F15PC72D	72" (182.9cm)	33.38" (84.8cm)	78" (198.1cm)	115/60/1	16.0	3549	9422	3/4	48	5-20P

**M** = Mirror Back • **P** = Pass Thru • **S** = See Thru • **R** = Remote • **C** = Self-Contained • **N** = Narrow 24" • **D** = Deep 30"

## Installation: Self-Contained F5 Series

### Location

Units represented in this manual are for indoor use only. All self-contained units were tested at the factory to assure proper operation. The unit should not be installed directly next to high heat generating equipment (ranges, griddles, etc.). Be sure the location chosen has a counter strong enough to support the total weight of the cabinet and contents. A fully loaded model may weigh as much as 2,000 pounds! Reinforce the counter as necessary to provide for maximum loading.

These units are installed by "dropping" them into the counter from above. The counter cutout sizes are as follows:

**48" wide units** — 18.62" x 23.62" (47.3 cm x 60.0 cm)

**72" wide units** — 18.62" x 32.62" (47.3 cm x 82.9 cm)

Self-contained F5 Series units require airflow to the compressor. Two louvers are provided with each unit and should be installed as illustrated on page 10.

Unit is designed to maintain 36°F (2°C) to 40°F (4°C) interior cabinet temperature at 65% or lower ambient relative humidity.

### Plumbing

Self-contained models are standard with a condensate evaporator. If, for some reason, a unit does not have a

condensate evaporator, or the evaporator fails, the unit's drain must have an outlet to an appropriate drainage area or container.



**Moisture collecting from improper drainage can create a slippery surface on the floor and a hazard to employees. It is the owner's responsibility to provide a container or outlet for drainage.**

### Electrical connection

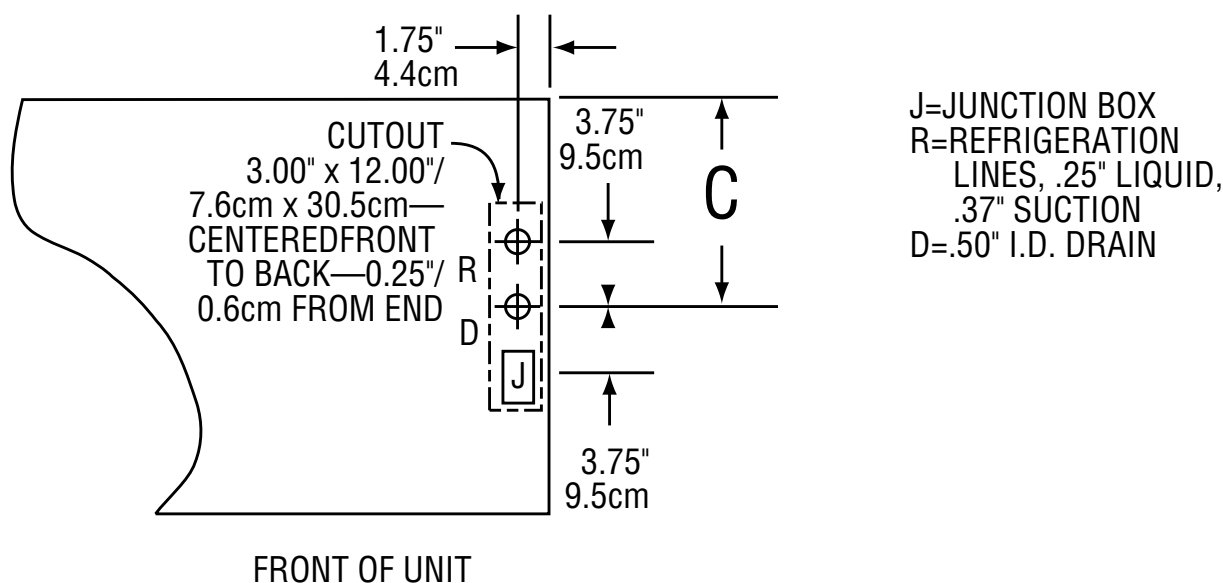
Refer to the amperage data on pages 3 & 4, the serial tag, your local code or the National Electrical Code to be sure the unit is connected to the proper power source. A protected circuit of the correct voltage and amperage must be run for connection of the line cord, or permanent connection to the unit.

Self-contained units have an **ON/OFF** switch in the junction box. Simply turn the switch to **ON** to begin operation.



**The power switch should be turned to OFF and the unit disconnected from the power source whenever performing service or maintenance functions.**

## Installation: Remote F5 Series



**Typical Mechanical Access (Plan View)  
All F5 Models**

## Installation: Self-Contained F15 Series

### Location

Units represented in this manual are for indoor use only. Be sure the location chosen has a floor strong enough to support the total weight of the cabinet and contents. A fully loaded model may weigh as much as 3,000 pounds! Reinforce the floor as necessary to provide for maximum loading.

For the most efficient refrigeration, be sure to provide good air circulation inside and out. Don't pack the refrigerator so full that air cannot circulate. Be sure that the exterior of the unit has access to ample air. Avoid hot corners and locations near stoves and ovens.

Unit is designed to maintain 36°F (2°C) to 40°F (4°C) interior cabinet temperature at 65% or lower ambient relative humidity.

### Leveling

A level cabinet looks better and will perform better because the drain pan will drain properly, the doors will line up with the frames properly and the cabinet will not be subject to undue strain. Units come standard with adjustable legs and bullet feet to make leveling easier. If your unit has casters, install in a stable condition with the front casters locked before operating.

### Plumbing

Self-contained models are standard with a condensate evaporator. If your unit does not have a condensate evaporator, or the evaporator fails, the unit's drain must have an outlet to an appropriate drainage area or container.



**Moisture collecting from improper drainage can create a slippery surface on the floor and a hazard to employees. It is the owner's responsibility to provide a container or outlet for drainage.**

### Electrical connection

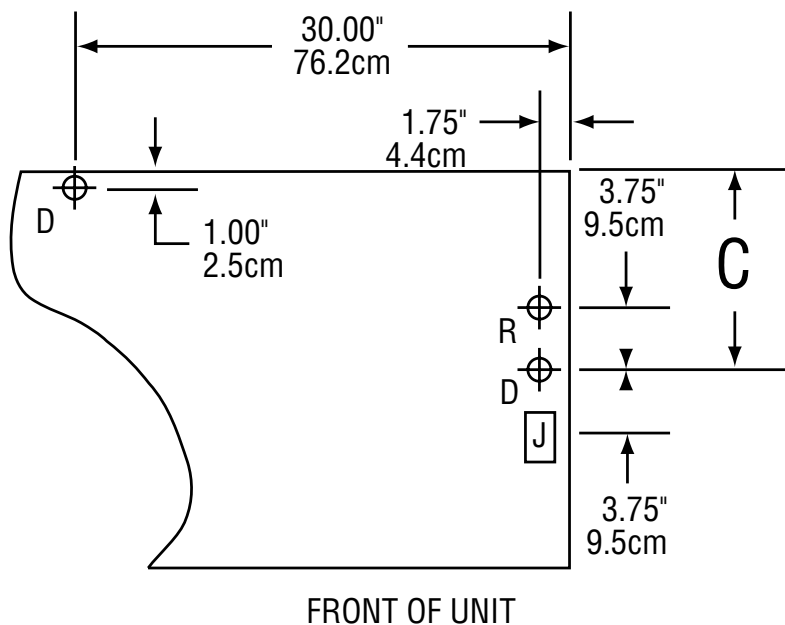
Refer to the amperage data on pages 3-4, the serial tag, your local code or the National Electrical Code to be sure the unit is connected to the proper power source. A protected circuit of the correct voltage and amperage must be run for connection of the line cord, or permanent connection to the unit.

Self-contained units have an **ON/OFF** switch located directly behind the louvered panel covering the compressor section. Simply turn the switch to **ON** to begin operation.



**The power switch should be turned to OFF and the unit disconnected from the power source whenever performing service or maintenance functions.**

## Installation: Remote F15 Series



J=JUNCTION BOX  
R=REFRIGERATION  
LINES, .25" LIQUID,  
.37" SUCTION  
D=.50" I.D. DRAIN

**Typical Mechanical Access (Plan View)  
All F15 Models**

## Shelf Installation

Display cases come with four epoxy coated wire shelves that are adjustable in 3-3/4" increments.



**Maximum weight for shelves is 75 pounds. Overloading shelves can damage equipment or cause bodily injury.**

## Display Lock Operation

At the factory, the keys are taped to the display case. Follow the directions below to lock and unlock the display case.

To lock: Line up key ridge with red dot.

Insert key and rotate one-half turn.

Remove key and push lock bolt in.

To open: Line up ridge with red dot.

Insert key and rotate key one-half turn.

Remove key.

## General Operation

After turning the **ON/OFF** switch to **ON** the unit's compressor will begin operating. Delfield display cases are designed to maintain an operational temperature of 36°F to 40°F (2°C to 4°C) in both the display (F5 and F15 Series) and storage areas (F15 Series only).

Located on the operator side at the top right is an **ON/OFF** switch for the display lights.

The display temperature control is located in the fan shroud. The F15 base thermostat is located in the lower evaporator coil housing. Use the knob to adjust the temperature, adjustments should be made gradually. Several small adjustments will be more effective than one large adjustment. It may take an hour

or longer to realize the temperature change depending on the application and location of the unit.

Continuous opening and closing of the doors will hinder the unit's ability to maintain operational temperatures.



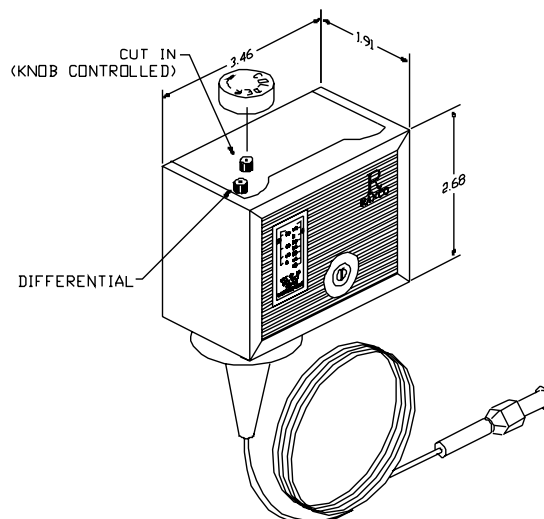
**If humidity is above 65%, condensation on the glass will be present.**

## Pressure Control Setting

Low pressure cut in at 20 psi.

Low pressure cut out at 5 psi.

Differential setting of 15 psi.



# Maintenance

## Door Gasket Maintenance

Door gaskets require regular cleaning to prevent mold and mildew build up and also to retain the elasticity of the gasket. Gasket cleaning can be done with the use of warm soapy water. Avoid full strength cleaning products on gaskets as this can cause them to become brittle and crack. Never use sharp tools or knives to scrape or clean the gasket. Gaskets can be easily replaced and do not require the use of tools or an authorized service person. The gaskets are "Dart" style and can be pulled out of the groove in the door and new gaskets can be "pressed" back into place.

## Drain Maintenance - Base

Each unit has a drain located inside the unit that removes the condensation from the evaporator coil and routes it to an external condensate evaporator pan. Each drain can become loose or disconnected during normal use. If you notice water accumulation on the inside of the unit be sure the drain tube is connected to the evaporator drain pan. If water is collecting underneath the unit make sure the end of the drain tube is in the condensate evaporator in the machine compartment. The leveling of the unit is important as the units are designed to drain properly when level. Be sure all drain lines are free of obstructions.

## Caster Maintenance

Wipe casters with a damp cloth monthly to prevent corrosion.



**The power switch must be turned to OFF and the unit disconnected from the power source whenever performing service, maintenance functions or cleaning the refrigerated area.**

## Refrigerators

The interior and exterior can be cleaned using soap and warm water. If this isn't sufficient, try ammonia and water or a nonabrasive liquid cleaner. When cleaning the exterior, always rub with the "grain" of the stainless steel to avoid marring the finish. Do not use an abrasive cleaner because it will scratch the stainless steel and can damage the breaker strips and gaskets.

## Stainless Steel Care and Cleaning

To prevent discoloration or rust on stainless steel several important steps need to be taken. First, we need to understand the properties of stainless steel. Stainless steel contains 70- 80% iron, which will rust. It also contains 12-30% chromium, which forms an invisible passive film over the steel's surface, which acts as a shield against corrosion. As long as the protective layer is intact, the metal is still stainless. If the film is broken or contaminated, outside elements can begin to breakdown the steel and begin to form discoloration or rust. Proper cleaning of stainless steel requires soft cloths or plastic scouring pads.

## NEVER USE STEEL PADS, WIRE BRUSHES OR SCRAPERS!

Cleaning solutions need to be alkaline based or non-chloride cleaners. Any cleaner containing chlorides will damage the protective film of the stainless steel. Chlorides are also commonly found in hard water, salts, and household and industrial cleaners. If cleaners containing chlorides are used be sure to rinse repeatedly and dry thoroughly. Routine cleaning of stainless steel can be done with soap and water. Extreme stains or grease should be cleaned with a non-abrasive cleaner and plastic scrub pad. Always rub with the grain of the steel. There are stainless steel cleaners available which can restore and preserve the finish of the steels protective layer. Early signs of stainless steel breakdown are small pits and cracks. If this has begun, clean thoroughly and start to apply

stainless steel cleaners in attempt to restore the passivity of the steel.



**Never use an acid based cleaning solution! Many food products have an acidic content, which can deteriorate the finish. Be sure to clean the stainless steel surfaces of ALL food products. Common items include, tomatoes, peppers and other vegetables.**

## Display Case



**Do not place hot pans against the blue ABS interior. Do not throw items into the display case. Failure to follow these recommendations could result in damage to the interior or blower coil. Overloading, restricting the airflow, and continuous opening and closing of the doors will hamper the units ability to maintain operational temperature.**

## Cleaning the Condenser Coil

In order to maintain proper refrigeration performance, the condenser fins must be cleaned of dust, dirt and grease regularly. It is recommended that this be done at least every three months. If conditions are such that the condenser is totally blocked in three months, the frequency of cleaning should be increased. Clean the condenser with a vacuum cleaner or stiff brush. If extremely dirty, a commercially available condenser cleaner may be required.

Failure to maintain a clean condenser coil can initially cause high temperatures and excessive run times. Continuous operation with a dirty or clogged condenser coil can result in compressor failure. Neglecting the condenser coil cleaning procedures will void any warranties associated with the compressor and cost to replace the compressor.



**Never use a high-pressure water wash for this cleaning procedure as water can damage the electrical components located near or at the condenser coil.**

## Doors/Hinges

Over time and with heavy use the doors hinges may become loose. If this happens tighten the screws that mount the hinge brackets to the frame of the unit. Loose or sagging doors can cause the hinges to pull out of the frame, which may damage both the doors and the hinges. In some cases this may require qualified service agents or maintenance personnel to perform repairs.



**Do not place hot pans on/against the blue ABS liner. Do not throw items into the storage area. Failure to follow these recommendations could result in damage to the interior of the cabinet or to the blower coil. Overloading the storage area, restricting the airflow, and continuous opening and closing of the doors and drawers will hamper the units ability to maintain operational temperature.**

## Preventing blower coil corrosion

To help prevent corrosion of the blower coil, store all acidic items, such as pickles and tomatoes, in sealable containers. Immediately wipe up all spills.

## Cleaning the condensate evaporator (remote models only)

The stainless steel condensate evaporator pan should be cleaned every six months. Use a vacuum cleaner or damp cloth to remove dust that may have accumulated. This will prevent corrosion of the stainless steel.



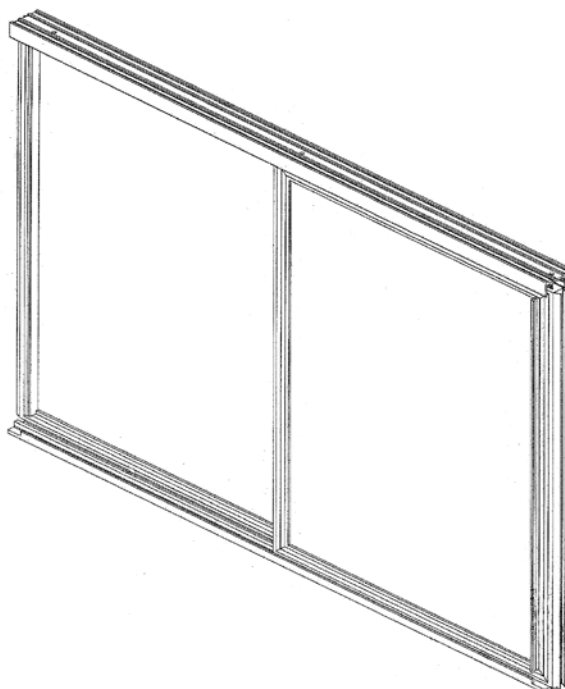
## Sliding Door Assembly Maintenance

All Delfield F5 Series and F15 Series display cases feature a Pike® sliding door assembly. A typical Pike sliding door assembly is shown in the illustration at right.

Frequent, regular cleaning with a mild soap and water solution will keep the tracks free of foreign matter and will insure many years of service.

The glass may be cleaned with one of the many commercial glass cleaners currently available.

If it becomes necessary to replace a Pike sliding door assembly or a glass panel, have your unit's model and serial numbers available when you call Delfield's Service and Parts Department at (800) 733-8829. Indicate that your unit has the Pike sliding door assembly when you call.



## Sliding Door Removal And Reinstall

### Sliding Door Removal

Open the door almost completely. Firmly grasp both sides of the door. Lift the door up and move it until it enters a notch and can be lifted higher. Tilt the bottom out without removing the top. Use the top to gently return the spring to the closed position. Remove the door from the top track.

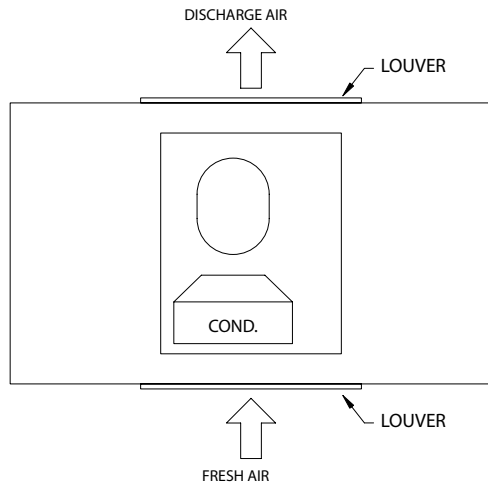
### Sliding Door Reinstall

There is a notch in the top inside corner of the door. Put the spring in the door's notch and move the spring to the open position. Put the top into the track and find the notch where the door can be lifted higher. Set bottom of the door into the track.

## Condenser Air Flow: F5

F5 units are designed to be operated with two supplied louvered panels for proper air flow. Failure to provide the proper air flow will void the warranty. Louver cut-outs are 22" by 11" (55.9cm by 27.9cm) typical. Cut-outs are to begin a maximum of 4.00" (10.2cm) from the counter-top. Proper installation must provide for air flow to and from the condensing unit. Install as shown below.

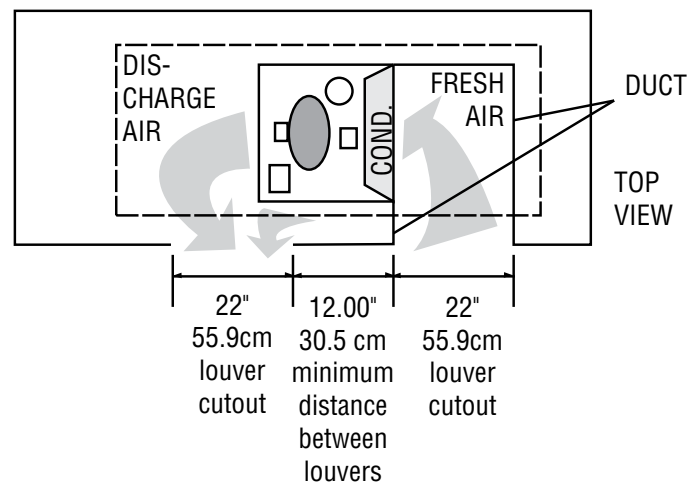
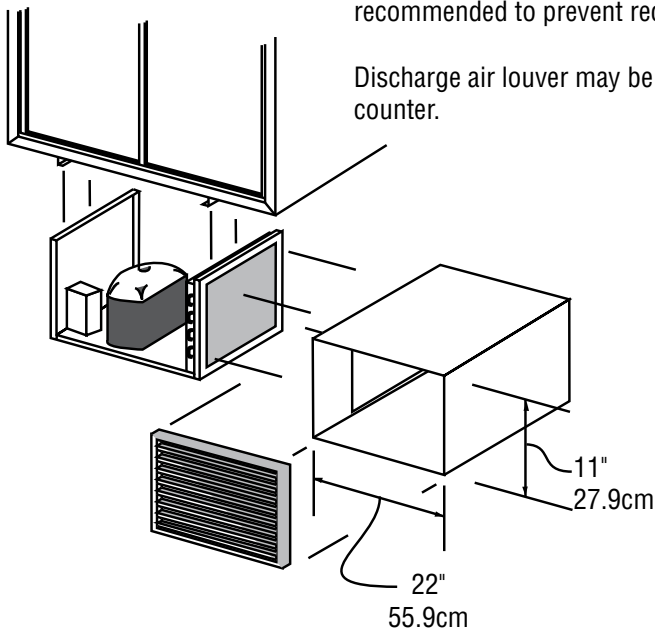
### 48" Wide Units Air Flow Detail



### 72" Wide Units Air Flow Detail

An "air duct" should be constructed from the air-intake louver to the condenser. This is recommended to prevent recirculation of discharge air.

Discharge air louver may be located further from fresh air louver or on the opposite side of counter.



## Pike Door Components

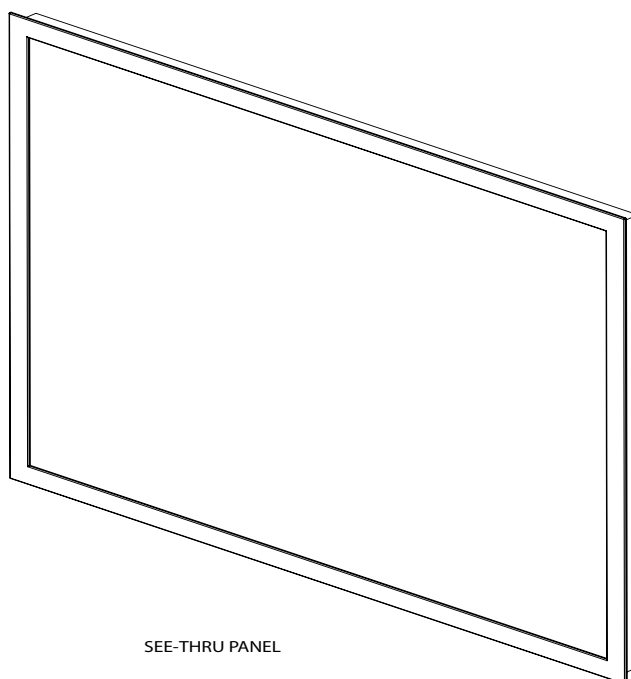
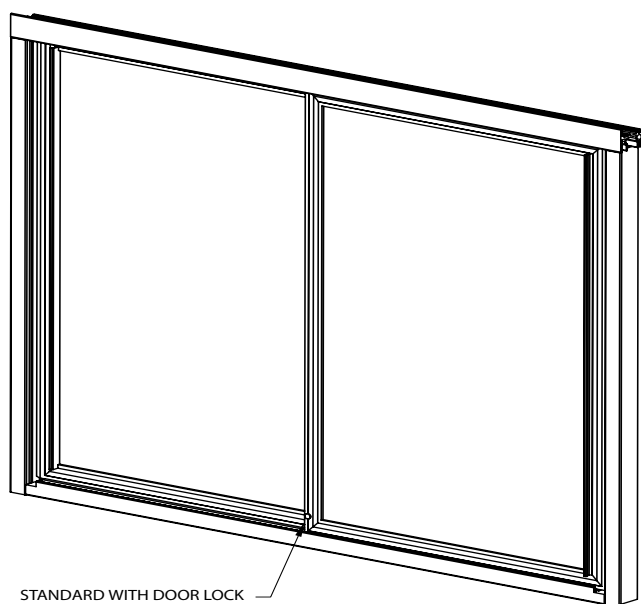
### 48" UNITS

Bearing, roller, single .....	3234636
Gasket, bumper, 31 13/16" .....	3234808
Gasket, wiper strip, 30 3/8" .....	3234809
Spring, 17" gold .....	3234810
Track, bottom, 43 7/16" .....	3234803
Track top, 44 7/16" .....	3234800
See thru panel .....	3455397
Replacement lock, units 2007 and after .....	3237549
Replacement lock, units prior to 2007 .....	3233986

### 72" UNITS

Bearing, roller, double .....	3234637
Gasket, bumper, 31 13/16" .....	3234808
Gasket, wiper strip, 30 3/8" .....	3234809
Spring, 30" gold .....	3233946
Track, bottom, 67 7/16" .....	3234805
Track top, 68 7/16" .....	3234802
See thru panel .....	3455399
Replacement lock, units 2007 and after .....	3237549
Replacement lock, units prior to 2007 .....	3233986

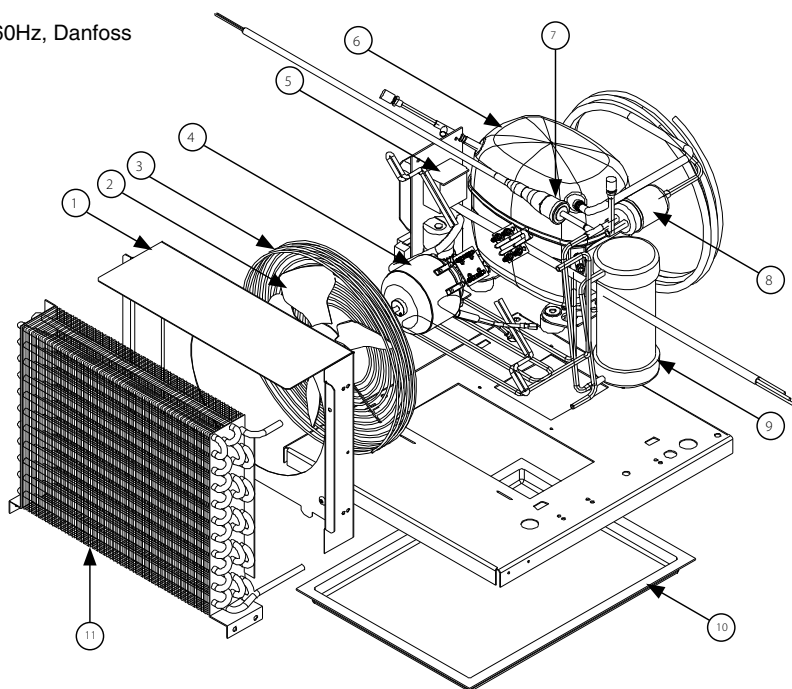
**Note: Pass-thru units have two sets of sliding display doors, see-through and mirror-back units have one set.**



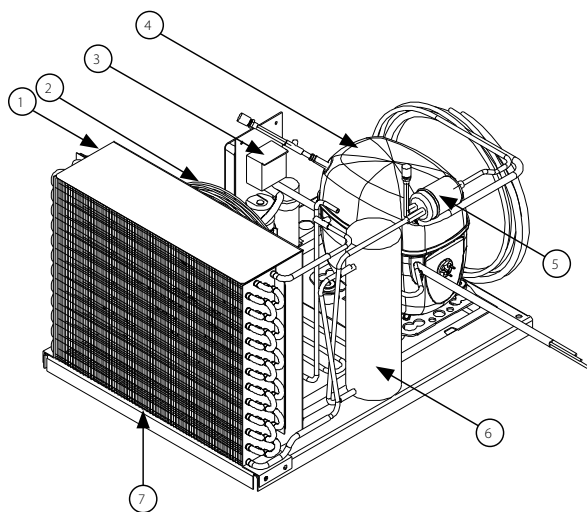
SEE-THRU PANEL

## Condensing Unit Assembly 1/2 H.P. F5 48" Models

Key	Delfield Part #	Description
-	000-BN5-0035	Condensing Unit Assembly
1	026-C58-0031	Shroud, 1/2 HP condenser coil
2	3516554	Blade, fan 9.00", 5 pedal
3	2160019	Guard, fan, condenser, upright
4	2162716	Motor, fan, 16W, 115V
5	3516462	Capacitor, start, assembly
6	3527026	Compressor, SC12MLX, 115V/60Hz, Danfoss
7	3516331	High pressure switch
8	3516322	Filter dryer, (2) inlet, .25"
9	3516459	Tank, receiver
10	075-231-0031	Pan, condensate
11	3516455	Coil, 1/2 HP condensing

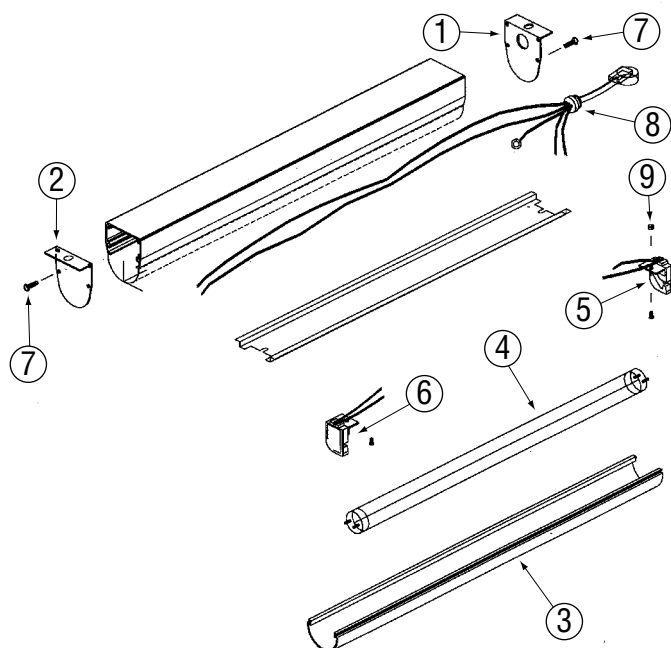


## Condensing Unit Assembly 3/4 H.P. F15 Models, F5 72" Models



Key	Delfield Part #	Description
-	000-BN5-0036	Condensing Unit Assembly
1	026-C58-0032	Shroud, 3/4 HP condenser coil
2	2160019	Guard, fan, condenser, upright
3	3516442	Capacitor, start, run, assembly
4	3527021	Compressor, SC18MLX, 115V/60Hz, Danfoss
5	3516322	Filter dryer, (2) inlet, .25"
6	3516360	Tank, receiver
7	3516456	Coil, condenser, 3/4 HP
-	075-231-0031	Pan, condensate
-	3516433	Blade, fan 25°, 10", CW, upright
-	2162716	Motor, fan, 16W, 115V

## Fluorescent Light Fixture

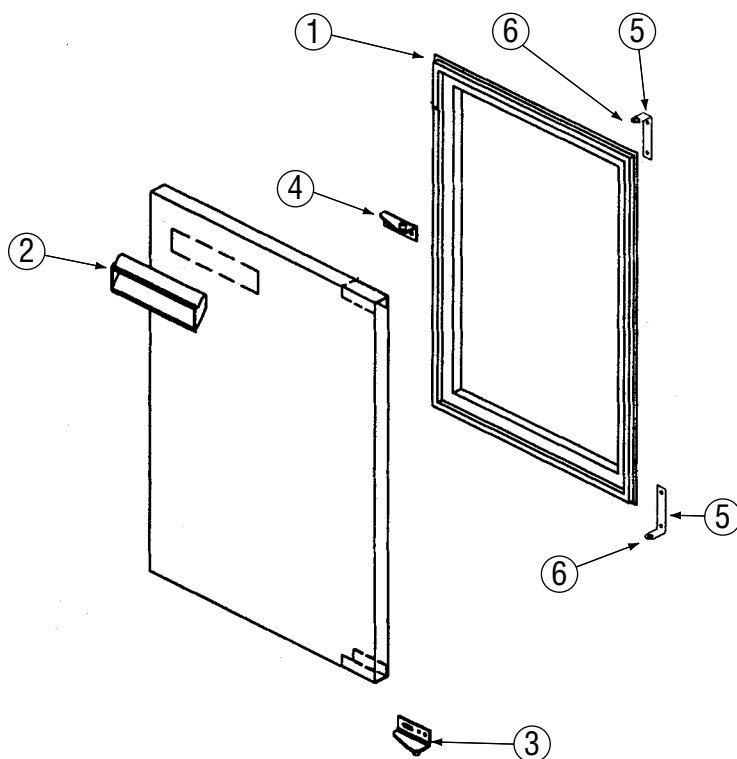


Key	QTY	Part#	Description
		000-406-0039	Complete assembly, 60"
		000-406-0037	complete assembly, 36"
		000-406-0038	complete assembly, 48"
1	1	313-146-0032	cap, end, top mtg, pigtail, -rem.
2	1	313-146-0033	cap, end, top mtg, blank, -rem.
3	1	376-A0M-0055	diffuser, fluor. light, 36"
3	1	376-A0M-0056	diffuser, fluor. light, 48"
3	1	376-A0M-0057	diffuser, fluor. light, 60"
4	1	2193907	lamp, fluorescent, 36"
4	1	2193908	lamp, fluorescent, 48"
4	1	2193909	lamp, fluorescent, 60"
5	1	2193939	lamp holder, left
6	1	2193940	lamp holder, right
7	8	9321266	screw, #8-32 x .50
8	1	2183613	pigtail, male, 3.5", rem. ballast
9	1	9321010	nut, hex, starlock, s/s, #6-32

\*See page 15 for ballast information.

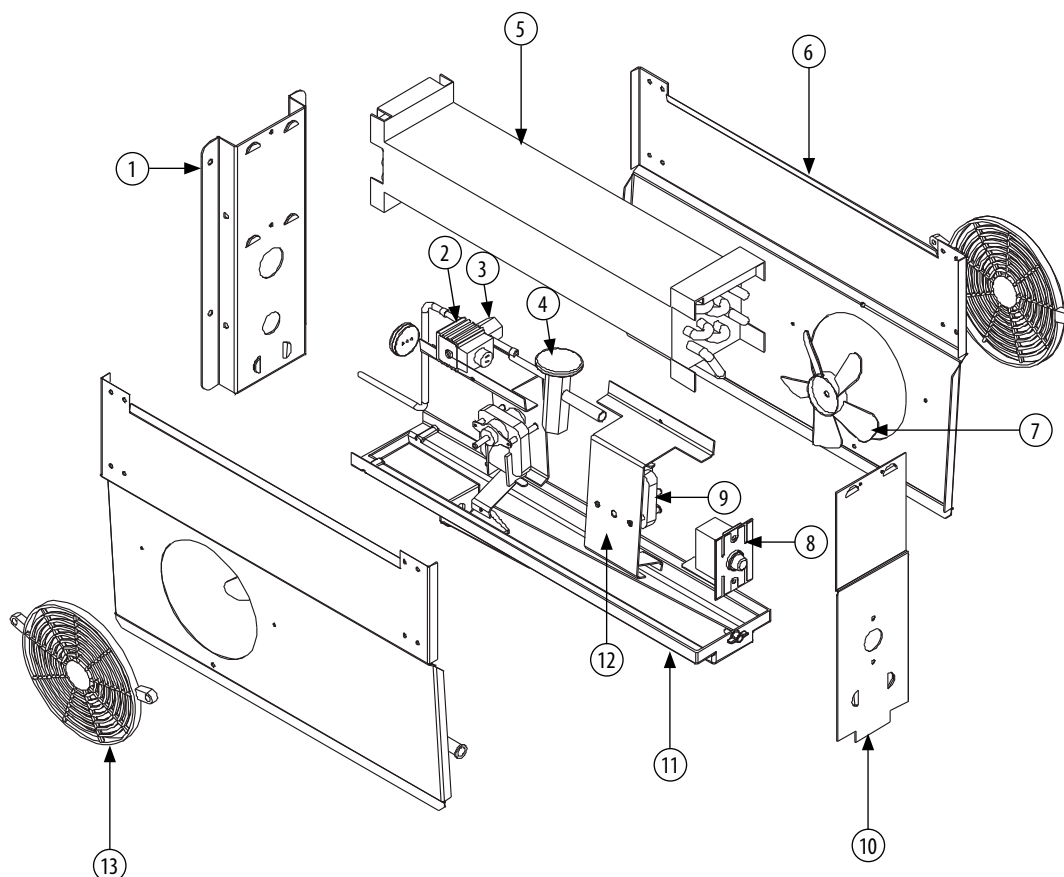
**Non-numbered items are not sold separately. They are only available with a complete assembly.**

## Door Assembly: Servview Bases



Key	QTY	Part#	Description
		000-187-0066	complete door assy., right, 19", 18.75" x 25.72"
		000-187-0067	complete door assy., left, 19", 18.75" x 25.72"
		000-187-0068	complete door assy., right, 24", 23.75" x 25.72"
		000-187-0069	complete door assy., left, 24", 23.75" x 25.72"
		000-187-006A	complete door assy., right, 27", 26.75" x 25.72"
		000-187-006B	complete door assy., left, 27", 26.75" x 25.72"
		000-187-006C	complete door assy., right, 32", 31.75" x 25.72"
		000-187-006D	complete door assy., left, 32", 31.75" x 25.72"
1	1	1701183	gasket, door, 19"
1	1	1701184	gasket, door, 24"
1	1	1701185	gasket, door, 27"
1	1	1701186	gasket, door, 32"
2	NOT FIELD REPLACABLE		handle, snap-in, 7"
3	1	3234072	hinge, door, top/LH, bottom/RH
4	1	3234073	hinge, door, top/RH, bottom/LH
5	2	3234391	hinge, cabinet, L-shaped
6	2	9321107	bushing, nylon, hinge pin

## Coil Assembly, Mullion, With Solenoid & Thermostat



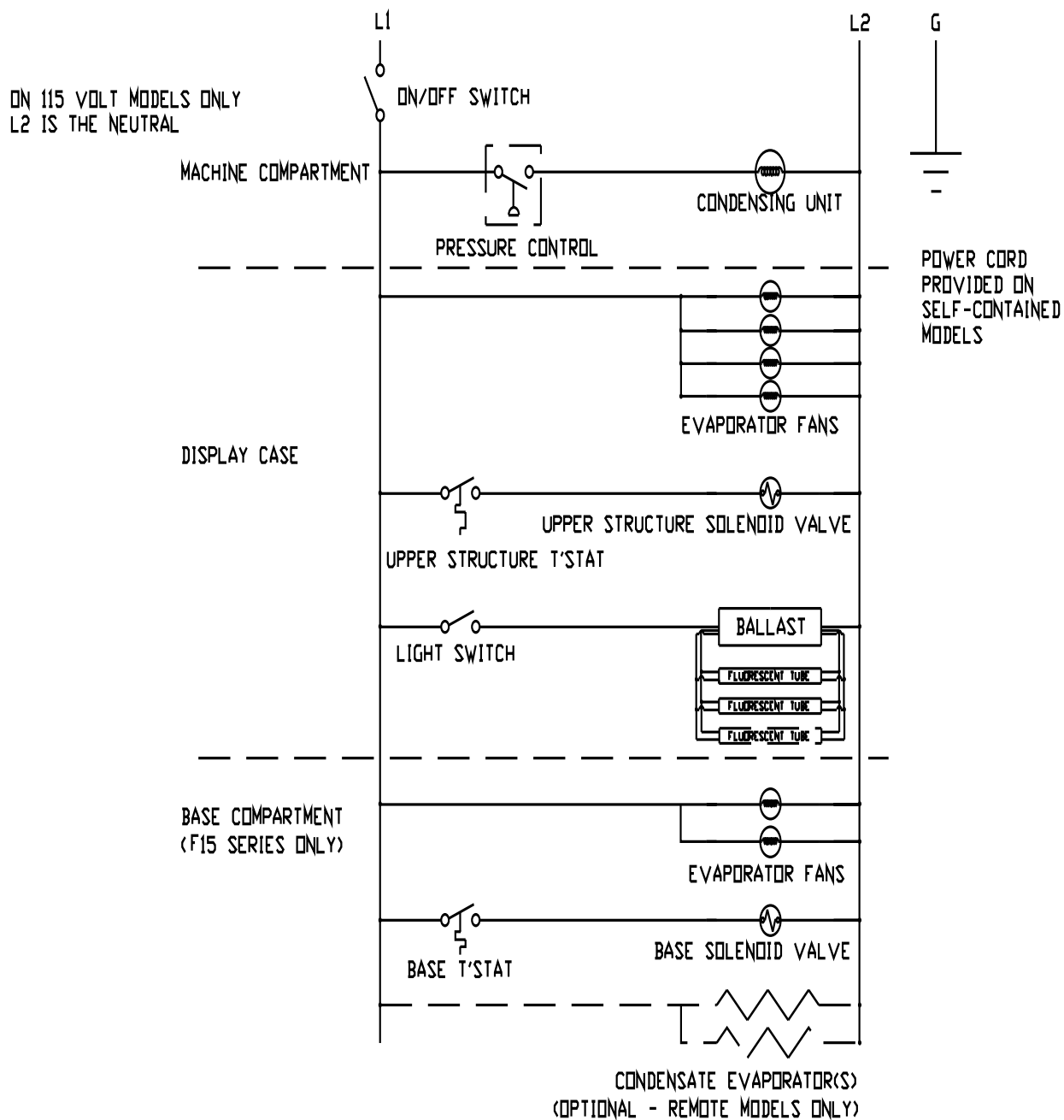
Key	Quantity	Delfield Part#	Description
-		000-248-0001	complete coil assembly
1	1	030-232-0001	back coil
2	1	3516103	coil, solenoid, 120v, spade, term.
3	1	3516102	solenoid valve
4	1	3516273	valve, expansion, 1/4, hi, R-4040A
5	1	3516095	coil, evap.
6	2	030-233-0000	side, coil, w/fan
7	2	3516172	blade, fan 5.56, CCW, Lexan
8	1	2194536	thermostat, in-39.5D/out-22.5D
9	2	2162691	motor, fan, 115V, 50/60, uppc0/bay
10	1	030-234-0002	front, coil, w/t-stat
11	1	039-231-0000	pan, drip, evap. coil, refg.
12	2	270-235-0000	bracket, mounting, fan, evap, coil
13	2	3516173	guard, fan, 6.38" dia., Lexan
-	1	2183312	harness, coil, w/t-stat-solenoid

## Replacement Parts List — not shown on exploded views

Description	Delfield Part#
<b>Supplied on all Servviews</b>	
Leg, 6" with mount plate (4 used on 48" — 6 used on 72") . . .	3234645
Thermometer, hanging, 4" (one each in base & display) . . . . .	3516135
<b>Supplied on all Self-Contained Servview's — F15 Series</b>	
Cord/plug assy, 14/3, NEMA 5-20P . . . . .	2183347
Control, pressure, low . . . . .	2193927
Louver, 18", 17.94 x 26.34 . . . . .	356-303-0031
<b>Misc. Parts — Display Sections — F5 &amp; F15 Series</b>	
Ballast, rapid start 36" lamp . . . . .	2194992
Blade, fan, Lexan, clear . . . . .	3516172
Bracket, fan motor, blower coil . . . . .	031-264-0000
Fan Guard . . . . .	3516173
Coil, evaporator, 48" . . . . .	3516090
Coil, evaporator, 72" . . . . .	3516091
Harness, elec., power to ballasts . . . . .	2184063
Motor, fan, 115V 50/60 . . . . .	2162691
Pan, drip, evap coil, 42" with flat bottom . . . . .	PMK00009
Pan, drip, evap coil, 42" with recessed drain . . . . .	000-BBO-0030
Pan, drip, evap coil, 72" with flat bottom . . . . .	PMK00011
Pan, drip, evap coil, 72" with recessed drain . . . . .	000-BBO-0032
Switch, rocker, 20A/125V, 15A/250V . . . . .	2190154
Thermometer, hanging, 4" . . . . .	3516135
Thermostat, in-39.5D/out-22.5D . . . . .	2194536
Valve, expansion, 1/2 ton, R404A . . . . .	3516084
Solenoid valve . . . . .	3156101
Solenoid coil 120V . . . . .	3516103

Description	Delfield Part#
<b>Mirror Glass</b>	
Mirror, glass, top, 48" . . . . .	3455417
Mirror, glass, top, 72" . . . . .	3455418
<b>Shelving &amp; Misc. Parts — Servview Bases</b>	
Shelf support, plastic, plug 1" . . . . .	3234290
Shelf, wire, 19" door, 14.38 x 25.25 . . . . .	3977984
Shelf, wire, 24" door, 19.38 x 25.25 . . . . .	3977998
Shelf, wire, 27" door, 22.56 x 25.25 . . . . .	3978014
Shelf, wire, 32" door, 27.38 x 25.25 . . . . .	3977983
Stud, wall side, for shelf support, 1/4 x 1.50 . . . . .	9321132
Stud, coil side, for shelf support . . . . .	9321040
<b>Shelving for Mirror Back Display Cases</b>	
Shelf, wire, 15.75" x 43.25" (M) . . . . .	3977993
Shelf, wire, 15.75" x 67.25" (M) . . . . .	3978061
Shelf, wire, 21.75" x 43.25" (M) . . . . .	3978025
Shelf, wire, 21.75" x 67.25" (M) . . . . .	3978062
<b>Shelving for See Thru &amp; Pass Thru Display Cases</b>	
Shelf, wire, 17.75" x 43.25" (S&P) . . . . .	3978026
Shelf, wire, 17.75" x 67.25" (S&P) . . . . .	3978063
Shelf, wire, 23.75" x 43.25" (S&P) . . . . .	3978027
Shelf, wire, 23.75" x 67.25" (S&P) . . . . .	3978064
(M) = Mirror Back • (S&P) = See Thru & Pass Thru	

## Wiring Diagram: Self-Contained F5 & F15 Series





## Standard Labor Guidelines To Repair Or Replace Parts On Delfield Equipment

Advice and recommendations given by Delfield Service Technicians do not constitute or guarantee any special coverage.

- A maximum of 1-hour is allowed to **diagnose a defective component**.
- A maximum of 1-hour is allowed for **retrieval of parts** not in stock.
- A maximum **travel distance** of 100 miles round trip and 2-hours will be reimbursed.
- Overtime, installation/start-up, normal control adjustments, general maintenance, glass breakage, freight damage, and/or correcting and end-user installation error will not be reimbursed under warranty unless pre-approved with a **Service Work Authorization** from Delfield. You must submit the number with the service claim.

### Labor Of 1-Hour Is Allowed To Replace:

- Ballast/Light
- Circulating Fan Motor and Blade
- Compressor Start Components and Overload Protector
- Condensate Element
- Door Hinges, Locks, and Gaskets
- Evaporator/Condenser Fan Motor and Blade
- Hi-limit/Thermal Protector Switch
- ON/OFF Switch
- Solenoid Coil
- Springs
- Thermostat

### Labor Of 2 Hours To Replace:

- Locate/Repair Leak
- Pressure Control
- Solenoid Valve

### Labor Of 3 Hours To Replace:

- Condenser or Evaporator Coil
- Expansion Valve

### Labor Of 4 Hours To Replace:

- Compressor

This includes recovery of refrigerant and leak check.

\$55.00 maximum reimbursement for refrigerant recovery (includes recovery machine, pump, torch, oil, flux, minor fittings, solder, brazing rod, nitrogen, or similar fees.)

### Refrigerants:

- R404A A maximum of \$15.00/lb. or \$1.00/oz. will be reimbursed.



## Standard One Year Warranty (One year parts, 90 days labor.)

The Delfield Company ("Delfield") warrants to the Original Purchaser of the Delfield product (herein called the "Unit") that such Unit, and all parts thereof, will be free from defects in material and workmanship under normal use and service for a period of one (1) year from the date of shipment of the Unit to the Original Purchaser **or, if the Original Purchaser returns the warranty card completely filled out including the date of installation within thirty (30) days of receipt of the Unit, one (1) year from the date of installation.** During this one year warranty period, Delfield will repair or replace any defective part or portion thereof returned to Delfield by the Original Purchaser which Delfield determines was defective due to faulty material or workmanship. The Original purchaser will pay all labor, crating, freight and related costs incurred in the removal of the Unit of defective component and shipment to Delfield, except that during a period of either ninety (90) days from the date of shipment of the Unit to the Original Purchaser or, if the Original Purchaser returns the warranty card completely filled out including the date of installation within thirty (30) days of receipt of the Unit, ninety (90) days from the date of installation Delfield will pay all related labor costs. Delfield will pay the return costs if the Unit or part thereof was defective.

The term "Original Purchaser" as used herein means that person, firm, association, or corporation for whom the Unit was originally installed.

This warranty does not apply to any Unit or part thereof that has been subjected to misuse, neglect, alteration, or accident, such as accidental damage to the exterior finish, operated contrary to the recommendations specified by Delfield; or repaired or altered by anyone other than Delfield in any way so as to, in Delfield's sole judgement, affect its quality or efficiency. This warranty does not apply to any Unit that has been moved from the location where it was originally installed. This warranty also does not cover the refrigerator drier or the light bulbs used in the Unit. **The warranty is subject to the user's normal maintenance and care responsibility as set forth in the Service and Installation Manual, such as cleaning the condenser coil, and is in lieu of all other obligations of Delfield. Delfield neither assumes, nor authorizes any other person to assume for Delfield, any other liability in connection with Delfield's products.**

Removal or defacement of the original Serial Number or Model Number from any Unit shall be deemed to release Delfield from all obligations hereunder or any other obligations, express or implied.

Parts furnished by suppliers to Delfield are guaranteed by Delfield only to the extent of the original manufacturer's express warranty to Delfield. Failure of the Original Purchaser to receive such manufacturer's express warranty to Delfield. Failure of the Original Purchaser to receive such manufacturer's warranty shall in no way create any warranty, expressed or implied, or any other obligation or liability on Delfield's part in respect thereof.

**IF THE CUSTOMER IS USING A PART THAT RESULTS IN A VOIDED WARRANTY AND A DELFIELD AUTHORIZED REPRESENTATIVE TRAVELS TO THE INSTALLATION ADDRESS TO PERFORM WARRANTY SERVICE, THE SERVICE REPRESENTATIVE WILL ADVISE CUSTOMER THE WARRANTY IS VOID. SUCH SERVICE CALLS WILL BE BILLED TO CUSTOMER AT THE AUTHORIZED SERVICE CENTER'S THEN APPLICABLE TIME AND MATERIALS RATES. CONSIDER: CUSTOMER MAY INITIATE A SERVICE AGREEMENT WITHOUT PARTS COVERAGE.**

If shipment of a replacement part is requested prior to the arrival in the Delfield factory of the part claimed to be defective, the Original Purchaser must accept delivery of the replacement part of a C.O.D. basis, with credit being issued after the part has been received and inspected at Delfield's plant and determined by Delfield to be within this warranty.

Under no condition does this warranty give the Original Purchaser the right to replace the defective Unit with a complete Unit of the same manufacturer or of another make. Unless authorized by Delfield in writing, this warranty does not permit the replacement of any part, including the motor-compressor, to be made with the part of another make or manufacturer.

No claims can be made under this warranty for spoilage of any products for any reason, including system failure.

The installation contractor shall be responsible for building access, entrance and field conditions to insure sufficient clearance to allow any hood(s), vent(s), or Unit(s) if necessary, to be brought into the building. Delfield will not be responsible for structural changes or damages incurred during installation of the Unit or any exhaust system.

Delfield shall not be liable in any manner for any default or delay in performance hereunder caused by or resulting from any contingency beyond Delfield's control, including, but not limited to, war, governmental restrictions or restraints, strike, lockouts, injunctions, fire, flood, acts of nature, short or reduced supply of raw materials, or discontinuance of the parts by the original part manufacturer.

**Except as provided in any Additional Four Year Protection Plan, if applicable, and the Service Labor Contract, if applicable, the foregoing is exclusive and in lieu of all other warranties, whether written or oral, express or implied. This warranty supersedes and excludes any prior oral or written representations or warranties. Delfield expressly disclaims any implied warranties of merchantability, fitness for a particular purpose of compliance with any law, treaty, rule or regulation relating to the discharge of substances into the environment. The sole and exclusive remedies of any person relating to the Unit, and the full liability of Delfield for any breach of this warranty, will be as provided in this warranty.**

Other than this Delfield Standard One Year Limited Warranty, any applicable Delfield Additional Four Year Protection Plan or applicable Delfield Service Labor Contract, the Original Purchaser agrees and acknowledges that no other warranties are offered or provided in connection with or for the unit or any other part thereof.

In no event will Delfield be liable for special, incidental or consequential damages, or for damages in the nature of penalties.

**IF DURING THE WARRANTY PERIOD, CUSTOMER USES A PART FOR THIS DELFIELD EQUIPMENT OTHER THAN AN UNMODIFIED NEW OR RECYCLED PART PURCHASED DIRECTLY FROM DELFIELD OR ANY OF ITS AUTHORIZED SERVICE CENTERS AND/OR THE PART BEING USED IS MODIFIED FROM ITS ORIGINAL CONFIGURATION, THIS WARRANTY WILL BE VOID. FURTHER, DELFIELD AND ITS AFFILIATES WILL NOT BE LIABLE FOR ANY CLAIMS DAMAGES OR EXPENSES INCURRED BY THE CUSTOMER WHICH ARISE DIRECTLY OR INDIRECTLY, IN WHOLE OR IN PART, DUE TO THE INSTALLATION OF ANY MODIFIED PART AND/OR PART RECEIVED FROM AN UNAUTHORIZED SERVICE CENTER. If the warranty becomes void, Customer may purchase from Delfield, if available, a Service Agreement or service at the then current time and materials rate.**

For more information on Delfield warranty's log on and check out the service section of our web site at [www.delfield.com](http://www.delfield.com).

## Additional Four Year Protection Plan (For Motor-Compressor Only)

Delfield Model#	Serial #	Installation Date
<input type="text"/>	<input type="text"/>	<input type="text"/>

In addition to the Standard One Year Warranty on the Motor-Compressor contained in the above listed Delfield product (the "Unit"), The Delfield Company ("Delfield") also agrees to repair, or exchange with similar or interchangeable parts in design and capacity at Delfield's option, the defective Motor-Compressor contained in the Unit (the "Motor-Compressor"), or any part thereof, for the Original Purchaser only, at any time during the four (4) years following the initial one (1) year period commencing on the date of installation for the Original Purchaser. Failure of the Original Purchaser to register the registration card containing the Original Purchaser's name, address, date of installation, model number and serial number of the Unit containing the Motor-Compressor within 30 days from the date of installation shall void this warranty. This additional warranty is only available if the Motor-Compressor is inoperative due to defects in material or factory workmanship, as determined by Delfield in its sole judgement and discretion. The Original Purchaser shall be responsible for returning the defective Motor-Compressor to Delfield prepaid, F.O.B. at the address shown on the back cover of this manual.

The term "Original Purchaser" as used herein means that person, firm, association, or corporation for whom the Unit was originally installed.

The term "Motor-Compressor" as used herein does not include unit base, air or water cooled condenser, receiver, electrical accessories such as relay, capacitors, refrigerant controls, or condenser fan/motor assembly. This warranty does not cover labor charges incidental to the replacement of parts. This warranty further does not include any equipment to which said condensing unit is connected, such as cooling coils, temperature controls or refrigerant metering devices. This warranty shall be void if the Motor-Compressor, in Delfield's sole judgement, has been subjected to misuse, neglect, alteration or accident, operated contrary to the recommendations specified by the Unit manufacturer, repaired or altered by anyone other than Delfield in any way so as, in Delfield's sole judgment, to affect its quality or efficiency or if the serial number has been altered, defaced or removed. This Warranty does not apply to a Motor-Compressor in any Unit that has been moved from the location where it was originally installed. The addition of methyl chloride to the condensing unit or refrigeration system shall void this warranty.

### General Conditions

Delfield shall not be liable in any manner for any default or delay in performance hereunder caused by or resulting from any contingency beyond Delfield's control, including, but not limited to, war, governmental restrictions or restraints, strike, lockouts, injunctions, fire, flood, acts of nature, short or reduced supply of raw materials, or discontinuance of any part or the Motor-Compressor by the unit manufacturer.

Replacement of a defective Motor-Compressor is limited to one (1) Motor-Compressor by us during the four (4) year period. Delfield shall replace the Motor-Compressor at no charge.

This warranty does not give the Original Purchaser of the Motor-Compressor

the right to purchase a complete replacement Motor-Compressor of the same make or of another make. It further does not permit the replacement to be made with a Motor-Compressor of another kind unless authorized by Delfield. In the event Delfield authorizes the Original Purchaser to purchase a replacement Motor-Compressor locally, only the wholesale cost of the Motor-Compressor is refundable.

Expressly excluded from this warranty are damages resulting from spoilage of goods.

Except as provided in any applicable Standard One Year Limited Warranty or applicable Service Labor Contract, the foregoing is exclusive and in lieu of all other warranties, whether written or oral, express or implied. This Warranty supersedes and excludes any prior oral or written representations or warranties. Delfield expressly disclaims any implied warranties of merchantability, fitness for a particular purpose or compliance with any law, treaty, rule or regulation relating to the Motor-Compressor, and the full liability of Delfield for any breach of this warranty, will be as provided in this warranty.

Other than any applicable Delfield Standard One year Limited Warranty, this Delfield Additional Four Year Protection Plan and any applicable Delfield Service Labor Contract, the Original Purchaser agrees and acknowledges that no other warranties are offered or provided in connection with or for the Motor-Compressor or any part thereof.

In no event will Delfield be liable for special, incidental or consequential damages, or for damages in the nature of penalties.





***Mt. Pleasant, MI***



***Covington, TN***

***Thank you for choosing Delfield!***

Help is a phone call away. Help our team of professional, courteous customer service reps by having your model number and serial number available at the time of your call (800) 733-8829

Model: \_\_\_\_\_ S/N: \_\_\_\_\_

Installation Date: \_\_\_\_\_



**For a list of Delfield's authorized parts depots,  
visit our website at  
[www.delfield.com](http://www.delfield.com)**

