



PROJECT	
ITEM #	
QUANTITY	DATE
APPROVAL	

F18FC

31.5" (80cm) Deep Self-Contained Freezer Base Work Tables

Short Form Specifications

Exterior Top is constructed of one piece 16-gauge stainless steel, with integral 2.12" (5.4cm) square nosing on front and 4" (10.2cm) high by 2" (5.1cm) thick backsplash on rear. Top is insulated with 2" (5.1cm) high density insulation.

Base interior has a 22-gauge stainless steel back and bottom. Interior ends and door frames to be thermoformed ABS plastic. Base is insulated with 1.5" (3.8cm) high density foamed in place polyurethane.

Exterior back and bottom of base is constructed of 24-gauge galvanized steel. Exterior ends are constructed of 18-gauge galvanized steel.

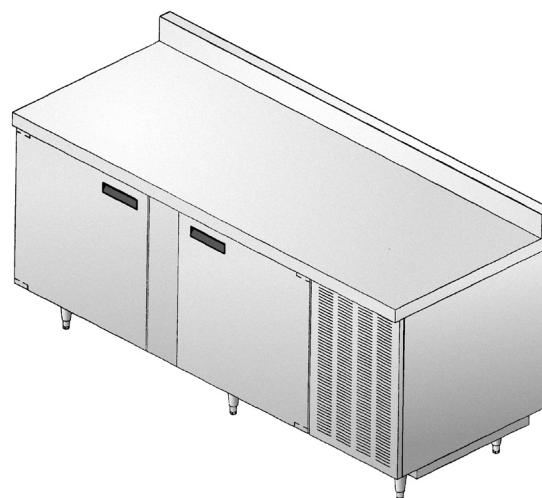
Door(s) have a thermoformed plastic ABS plastic interior liner and 22 gauge stainless steel exterior front. Door(s) have black recessed handle(s) and a snap-in magnetic gasket which is easily replaceable. Unit is furnished with (1) epoxy coated wire shelf for each door section.

Base has a machine compartment, standard on the right, with condensing unit and electrical junction box installed. Machine compartment has a removable louver for access to condensing unit. Blower coil(s) are located behind the door mullions.

Refrigeration system uses HFC-404A refrigerant and maintains 0°F (-18°C) to -5°F (-21°C).

Unit is mounted on 6.13" (15.6cm) high adjustable stainless steel legs.

Electrical connections are 115 volts, 60 hertz, single phase. Unit has an 8' (2.4m) long cord and plug.



Model F18FC78

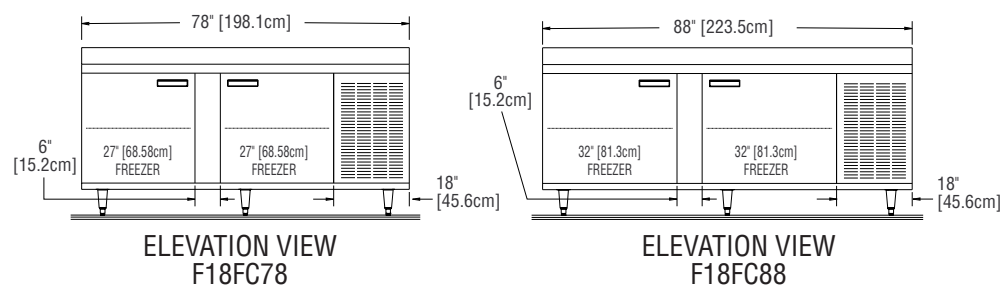
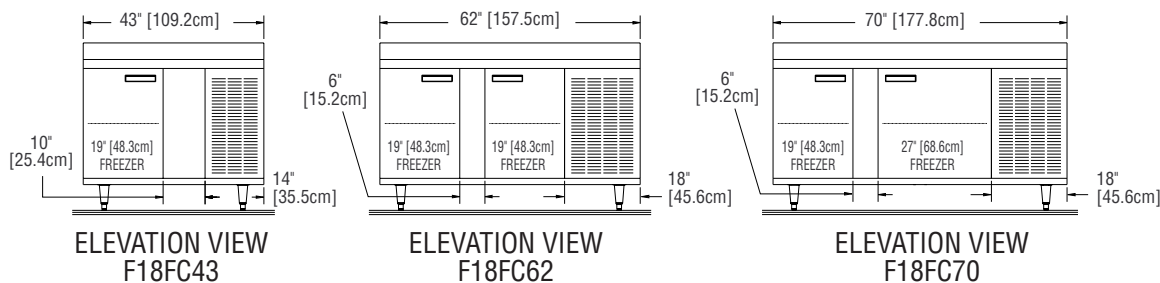
Optional Accessories & Modifications

906A	Stainless steel end
505H	Stainless steel back
505F	Laminate facing (full front)
906E	Laminate end
905A	Laminate back
1030A	Cutting board (Sanalite or composite)
107F	Tray rack
102	Drawers
	A-(2) 19" in lieu of one door
	B-(2) 27" in lieu of one door
	C-(2) 32" in lieu of one door
	E-(3) 19", 27" or 32" in lieu of one door
108	Locks
213	*220V/50 cycle
1027A	Casters

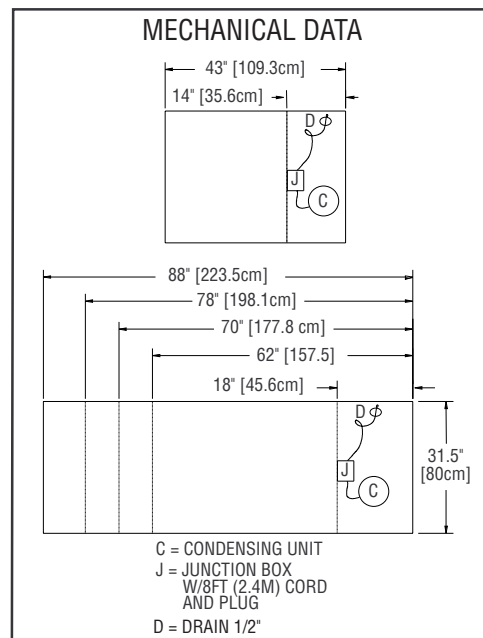
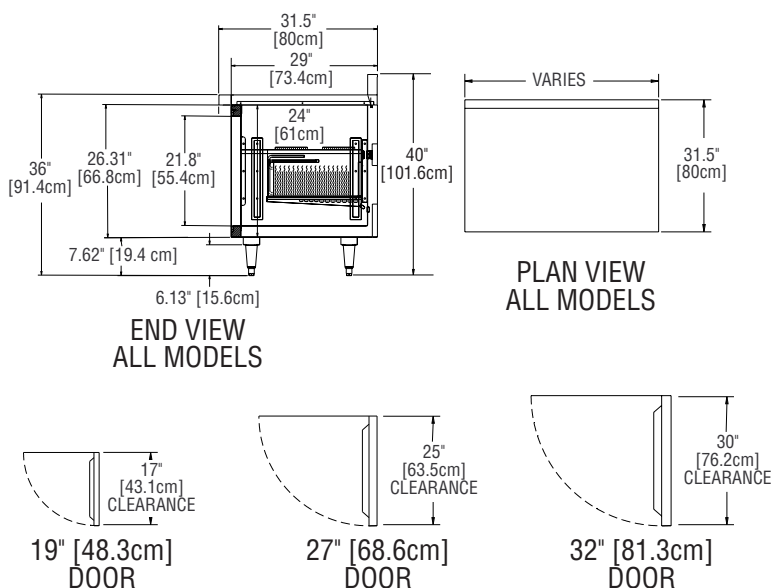
*Inclusion of this option will alter the electrical specifications of the unit



Delfield's
MARK7
modular equipment



NOTE: Unobstructed airflow must be maintained to insure unit performance and maintain warranty.



Mechanical Data—Standard Unit

MODEL NUMBER	NUMBER OF DOORS	STORAGE CU. FT.	SHELF AREA SQ. FT.	BTU LOAD	BTU SYSTEM	H.P.	VOLTS/HERTZ/PHASE	AMPS	SHIP WEIGHT LBS/KG
F18FC43	(1) 19"	5.58	2.56	943	1558	1/3	115/60/1	10.0	425/193
F18FC62	(2) 19"	12.21	5.12	1471	1776	1/2	115/60/1	12.0	495/225
F18FC70	19" & 27"	15.00	6.51	1647	2713	3/4	115/60/1	12.0	575/261
F18FC78	(2) 27"	17.79	7.90	1824	2713	3/4	115/60/1	12.0	645/292
F18FC88	(2) 32"	21.28	9.64	2045	2713	3/4	115/60/1	12.0	715/324

5-15P NEMA plug used on 43" & 62" units. 5-20P NEMA plug used on 70", 78" & 88" units.

The Delfield Company, 980 S. Isabella Rd., Mt. Pleasant, MI 48858, U.S.A. • (800) 733-8821 • Fax (800) 669-0619 • www.delfield.com

Delfield reserves the right to make changes in design or specifications without prior notice. ©2007 The Delfield Company. All rights reserved. Printed in U.S.A.