



|          |      |
|----------|------|
| PROJECT  |      |
| ITEM #   |      |
| QUANTITY | DATE |
| APPROVAL |      |

# KCSC-B

## Mobile Self-Contained Cold Pan Serving Counters

### Short Form Specifications

**Exterior Body** is seamless, one-piece molded fiberglass, having perfectly smooth exterior surface with all corners fully rounded. The fiberglass reinforced polyester (F.R.P.) is molded with permanent color. Stress points are internally reinforced.

**Exterior top** is constructed of 14-gauge stainless steel, welded, ground and polished into one integral unit.

The refrigerated cold pan is 7" (17.8cm) deep and constructed of stainless steel. The cold pan is separated from the exterior top by a thermal break. Copper refrigeration tubing is attached to the sides of the cold pan and is fully insulated with foamed in place polyurethane insulation. Cold pan is equipped with a 1" (2.5cm) I.P.S. drain with drain valve located at the bottom of the unit. Temperatures of 33°F (1°C) to 41°F (5°C) are maintained with pans recessed 3" (7.6cm) at 86°F ambient room temperature. Pans (by others) rest on a stainless steel bracket.

**Refrigeration system** uses HFC-404A refrigerant and has a self-contained 115 volt, 60 Hertz, single phase hermetically sealed condensing unit with adjustable cold pan pressure control. Unit is wired with a 3-wire, grounded, maximum 10' (3m) cord and plug. Unit has an on/off switch mounted on the exterior.

**Casters:** Unit is mounted on 5" (12.7cm) diameter swivel casters with non-marking polyolefin tires and plate brakes. Overall height of caster assembly is 6.00" (15.2cm).

### Optional Accessories and Modifications:

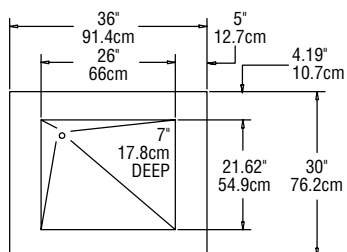
- A) 12" (30.5cm) wide stainless steel fold-down tray slide
- C) 10" (25.4cm) wide three-bar fold-down tray slide
- D) 10" (25.4cm) wide composite fold-down cutting boards
- E) 10" (25.4cm) wide stainless steel fold-down work shelf
- F) Line-up interlock device
- G) Glass-front counter protector
- H) Two tier display with glass shelves and sneezeguards
- HD) Dual service two tier display with sneezeguards
- I) Three tier display with glass shelves and sneezeguards
- J) 12" (30.5cm) wide 18-gauge stainless steel overself
- KS) Single service flip-up sneezeguard
- KD) Double service flip-up sneezeguard
- L) \*Fluorescent or incandescent light fixtures
- P) Open understorage with shelf or doors (specify)
- Q) \*120V/60Hz/1ø, 10 amp convenience outlet with breaker
- SG5A) Dry storage compartment — single door
- SG5B) Dry storage compartment — double door
- SG20) \*Refrigerated understorage (60" unit or longer only)
- U) 14" x 30" (35.6cm x 76.2cm) stainless steel end drop shelf
- UU) Molded fiberglass trim strips
- V) 6" (15.2cm) high adjustable stainless steel legs in lieu of casters
- Adapter bars (specify length)

\*Inclusion of these options will alter the electrical specifications of unit.

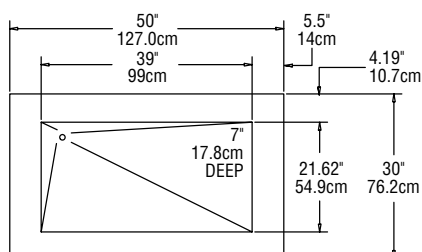


Model KCSC-50-B

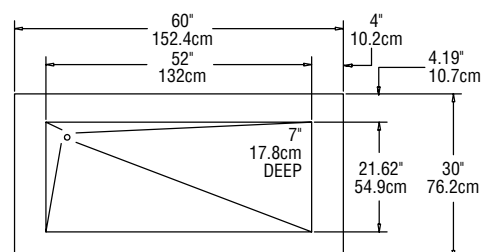




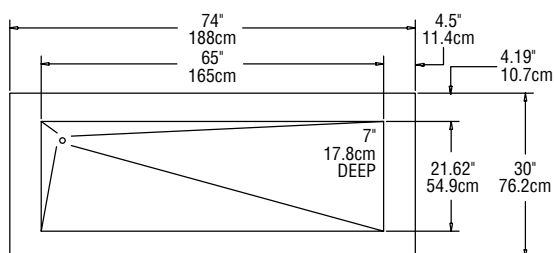
**PLAN VIEW  
KCSC-36-B**



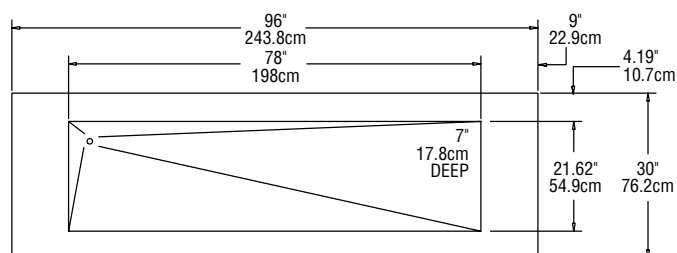
**PLAN VIEW  
KCSC-50-B**



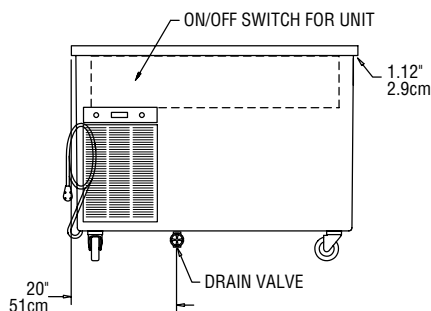
**PLAN VIEW  
KCSC-60-B**



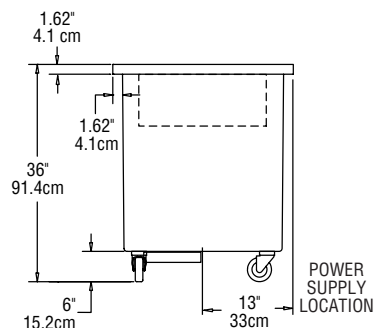
**PLAN VIEW  
KCSC-74-B**



**PLAN VIEW  
KCSC-96-B**



**TYPICAL ELEVATION VIEW  
ALL KCSC-B MODELS**



**TYPICAL END VIEW  
ALL KCSC-B MODELS**

### Mechanical Data — Standard Unit

| MODEL NUMBER    | VOLTAGE/HERTZ/ PHASE | AMP | H.P. | NEMA PLUG | SHIP WEIGHT LBS./KG. |
|-----------------|----------------------|-----|------|-----------|----------------------|
| <b>KCSC-36B</b> | 115/60/1             | 7.0 | 1/4  | 5-15P     | 350/159              |
| <b>KCSC-50B</b> | 115/60/1             | 7.0 | 1/4  | 5-15P     | 425/193              |
| <b>KCSC-60B</b> | 115/60/1             | 7.0 | 1/4  | 5-15P     | 500/227              |
| <b>KCSC-74B</b> | 115/60/1             | 7.0 | 1/4  | 5-15P     | 575/261              |
| <b>KCSC-96B</b> | 115/60/1             | 7.0 | 1/4  | 5-15P     | 650/295              |