



| | |
|----------|------|
| PROJECT | |
| ITEM # | |
| QUANTITY | DATE |
| APPROVAL | |

RFFSC

Built-in self-contained milk & ice cream dispensers

Short form specifications

The exterior sides and top edge shall be 20-gauge galvanized steel. Exterior bottom to be 14-gauge galvanized steel.

Interior shall have (2) separate compartments, one refrigerated and one freezer. Inner liners shall be water-tight and constructed of 22-gauge stainless steel with a 1.25" (3.2cm) I.P.S. drain. Openings shall have throat liners constructed of high impact plastic. Unit to be insulated with foamed-in-place polyurethane insulation with a non-conductive top breaker strip.

Each opening shall have an insulated, stainless steel folding lid with high impact plastic liner, molded rubber edge and black plastic handles.

(1) stainless steel louver shall be provided for installation in the cabinet to allow proper air flow to the condensing unit.

Each self-leveling mechanism shall be field adjustable by adding or removing stainless steel extension springs in the elevator housing inside the unit. The elevators shall be connected by removable platform carriers constructed of 18-gauge stainless steel.

(6) anodized aluminum divider trays will be supplied per opening.
NOTE: See chart on back for ice cream storage capacity.

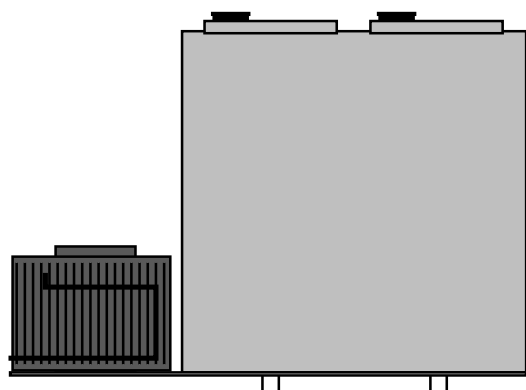
Refrigeration system shall use HFC-404A refrigerant. Refrigerant flow shall be controlled by an (2) expansion valves. Cabinet shall maintain 36°F to 40°F (2°C to 4°C) temperature in the refrigerator section and 0°F to 5°F (-18°C to -15°C) temperature in the freezer section with lids closed for storage.

Refrigerator section shall be controlled by an EPR valve; the freezer section shall be controlled by a pressure control. Controls shall be located near the condensing unit.

Electrical connections shall be 115 volt, 60 cycle, single phase. Unit shall have a 9' (2.7m) long electrical cord and NEMA 5-15P installed at the mechanical end.

Optional accessories & modifications

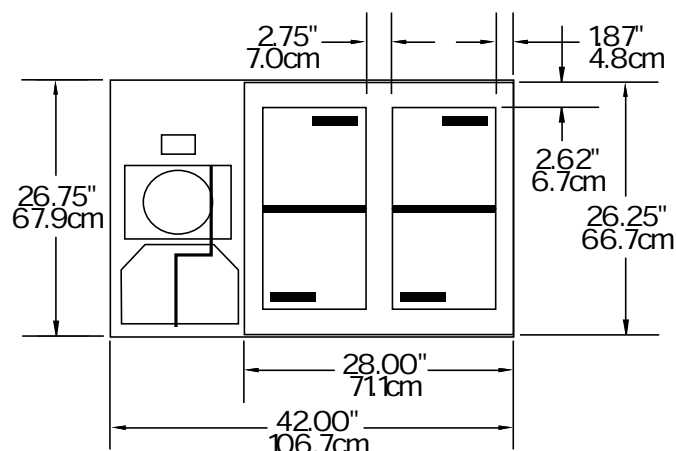
- Lid locking device
- Wire baskets
- Lexan® lids (refrigerated compartment only)
- Inclusion of this option will alter the electrical specifications of the unit. Special voltages (contact factory)



Model RFFSC-103

This equipment is intended for storage and/or display of pre-packaged or bottled products only.

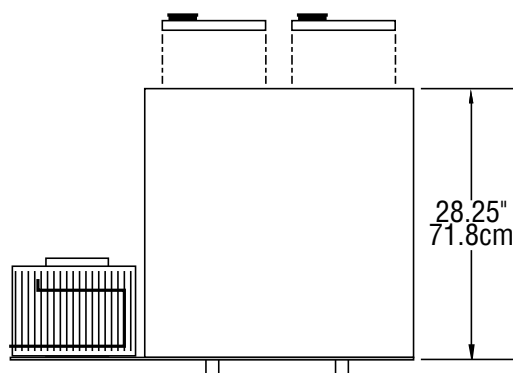




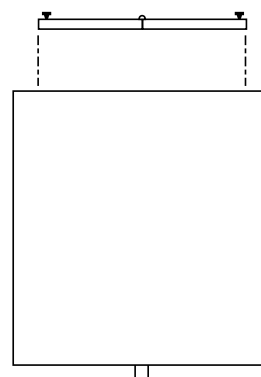
PLAN VIEW
MODEL RFFSC-103

INSTALLATION NOTE:

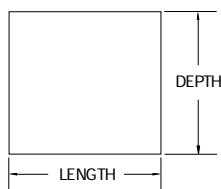
Refrigeration system is designed so that air will flow into the compressor area through the provided louver. Any restriction to this air flow path will void the warranties.



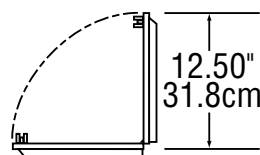
ELEVATION VIEW
MODEL RFFSC-103



RIGHT END VIEW
MODEL RFFSC-103



CUTOUT ORIENTATION
(PLAN VIEW)



LID OPENING DETAIL
ALL RFFSC MODELS

| MODEL NUMBER | CUTOUT DIMENSIONS | | CAPACITY | HORSE-POWER | AMPS | REFRIGERATOR | | FREEZER | | SHIP WEIGHT |
|--------------|-----------------------|--|---|-------------|------|--------------|--------------|----------|--------------|-------------------|
| | (L x D) | | | | | BTU LOAD | BTU CAPACITY | BTU LOAD | BTU CAPACITY | |
| RFFSC-103 | (2) 10.75" x 21.00" * | | 126 half pint cartons & 210 three-ounce ice cream cups | 1/4 | 6.0 | 140 | 1600 | 410 | 800 | 428 lbs 194 kg |

* requires 2.75" (7.0cm) between each cutout