



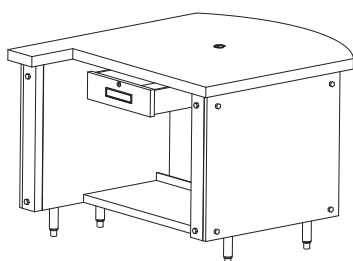
Concepts™ Serving Systems

Radial Cashier Station

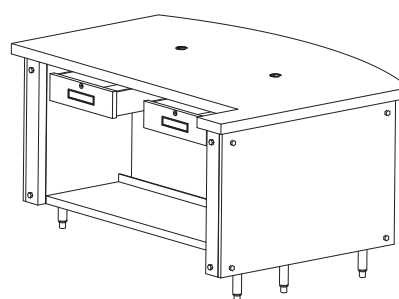
Project _____
Item _____
Quantity _____
CSI Section 11400
Approved _____
Date _____

Models

- | | | | |
|-------------|------------------------------------|-------------|----------------------------------|
| •DCCS-SDR | Single drawer | •DCCS-DDR | Dual drawer |
| •DCCS-SDRW | Single drawer with wing walls | •DCCS-DDRW | Dual drawer with wing walls |
| •DCCS-SDRWL | Single drawer with left wing wall | •DCCS-DDRWL | Dual drawer with left wing wall |
| •DCCS-SDRWR | Single drawer with right wing wall | •DCCS-DDRWR | Dual drawer with right wing wall |



DCCS-SDRWL



DCCS-DDRWR

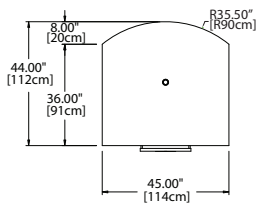
Standard Features

- Heavy duty stainless steel top
- Reinforced stainless steel front and rear removable panels
- Heavy duty base support structure
- Standard on 6" legs
- 2" grommet hole in top to allow cord access for cash registers
- Stainless steel locking cash drawer(s) standard
- 120V-15A duplex (GFCI) receptacle, Nema 5-15R 15.0A breaker
- Finished stainless steel or laminated end panels
- 36" work height
- Bottom shelf
- One year parts and labor standard warranty

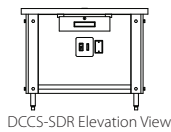
Options & Accessories

- Granite, Hanstone and Solid Surface top materials
- Laminated base panels
- Décor panels
- Graphics packages
- Casters
- Kickplates (units with legs only)
- 34" work height
- 30" work height
- Bottom pull out shelf (no doors)
- Locking base doors
- Tabular foot rest

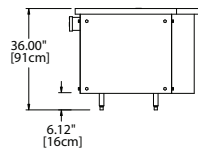
DCCS-SDR



DCCS-SDR Plan View

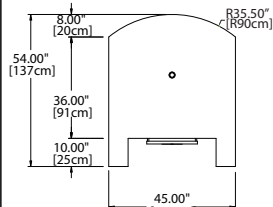


DCCS-SDR Elevation View

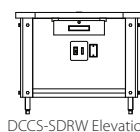


DCCS-SDR Side View

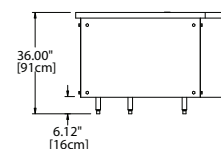
DCCS-SDRW



DCCS-SDRW Plan View

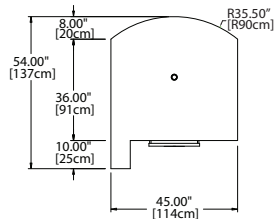


DCCS-SDRW Elevation View

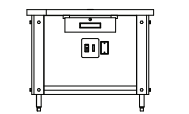


DCCS-SDRW Side View

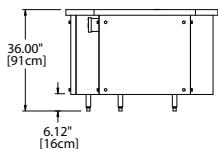
DCCS-SDRWL



DCCS-SDRWL Plan View

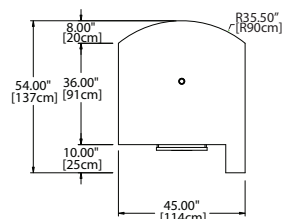


DCCS-SDRWL Elevation View

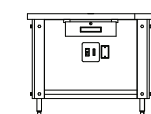


DCCS-SDRWL Side View

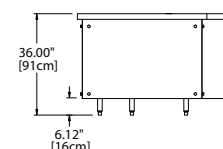
DCCS-SDRWR



DCCS-SDRWR Plan View

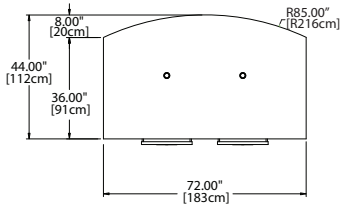


DCCS-SDRWR Elevation View

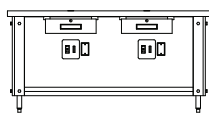


DCCS-SDRWR Side View

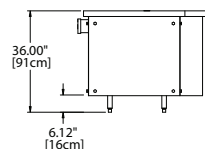
DCCS-DDR



DCCS-DDR Plan View

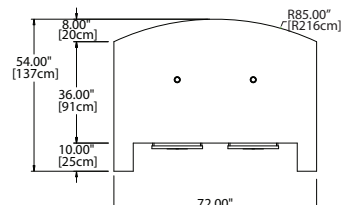


DCCS-DDR Elevation View

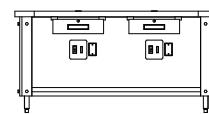


DCCS-DDR Side View

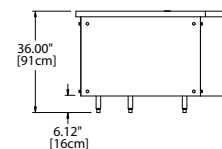
DCCS-DDRW



DCCS-DDRW Plan View

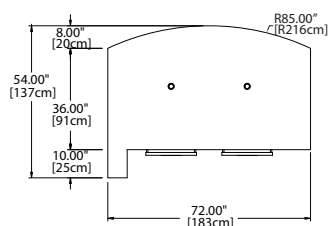


DCCS-DDRW Elevation View

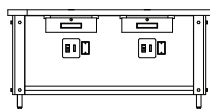


DCCS-DDRW Side View

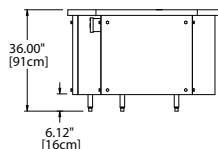
DCCS-DDRWL



DCCS-DDRWL Plan View

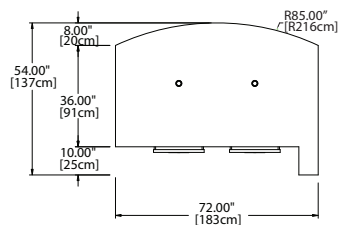


DCCS-DDRWL Elevation View

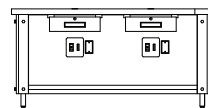


DCCS-DDRWL Side View

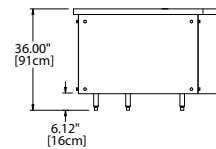
DCCS-DDRWR



DCCS-DDRWR Plan View



DCCS-DDRWR Elevation View



DCCS-DDRWR Side View

Concepts™ Serving Systems

Specifications				
Model	Length	Depth	Height	Ship Weight
DCCS-SDR	45.00"	44.00"	36.00"	310lbs/141kg
DCCS-SDRW	45.00"	54.00"	36.00"	390lbs/177kg
DCCS-SDRWL	45.00"	54.00"	36.00"	350lbs/159kg
DCCS-SDRWR	45.00"	54.00"	36.00"	350lbs/159kg
DCCS-DDR	72.00"	44.00"	36.00"	580lbs/263kg
DCCS-DDRW	72.00"	54.00"	36.00"	660lbs/299kg
DCCS-DDRWL	72.00"	54.00"	36.00"	620lbs/281kg
DCCS-DDRWR	72.00"	54.00"	36.00"	620lbs/281kg

Delfield reserves the right to make changes to the design or specifications without prior notice.



Concepts™ Serving Systems

Radial Cashier Counter

Specifications

Exterior body is constructed of 0.75" Melamine reinforced front and rear panels with 22 gauge stainless steel skin and 1" polyethylene horizontal rib supports. Horizontal brace on rear is constructed of 18 gauge galvanized steel. The exterior ends are unfinished.

Exterior top is constructed of 14 gauge stainless steel. Horizontal top supports on front and rear are constructed with 18 gauge galvanized steel. Top end supports are 12 gauge stainless steel.

Interior base bottom is constructed of 16 gauge galvanized steel. Vertical base support braces are 14 gauge galvanized steel.

Legs: Bases mounted on 6.12" adjustable legs.

Electrical: 120V-15A duplex (GFCI) receptacle. Nema 5-15R 15.0A breaker.

