



F18DC

31.5" (80cm) Deep Self-Contained Quick Glance Rail

Project _____
Item _____
Quantity _____
CSI Section 11400
Approved _____
Date _____

F18DC:

31.5" (80cm) Deep Self-Contained Quick Glance Rail

Models

- F18DC52 52" length, 12 1/6 pan capacity
- F18DC60 60" length, 14 1/6 pan capacity
- F18DC68 68" length, 16 1/6 pan capacity
- F18DC82 82" length, 20 1/6 pan capacity
- F18DC91 91" length, 22 1/6 pan capacity
- F18DC99 99" length, 24 1/6 pan capacity



F18DC82

Standard Features

- 16-gauge stainless steel top construction
- Unfinished ends
- Interior sub-top is made of durable stainless steel
- 2BF stainless steel refrigerated base interior back and bottom
- High density environmentally friendly, Kyoto Protocol Compliant, Non ODP (Ozone Depletion Potential), Non GWP (Global Warming Potential) polyurethane foam insulation throughout unit
- Refrigerated base fronts are made of .095" thick ABS plastic backed by rigid polyurethane water blown injection molded frames (NO WOOD)
- Exterior drawer fronts are stainless steel with ABS plastic liner
- Snap-in dart style vinyl magnetic gasket
- Recessed black plastic handle held in with a

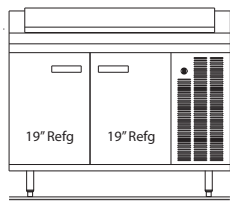
- positive lock system
- 14-gauge leg rails that run the entire length
- 6.12" adjustable stainless steel legs and bullet feet
- 8' cord and plug
- Quick raised rail maintains NSF7 required 33° to 41° with pans recessed .88" in front
- Rail has a on/off switch
- Interior base cabinet is cooled with mullion style evaporator blower coils (coated) mounted between each door/drawer section for very even air and temperature control
- Refrigerator base interior maintains 36° to 40° at 100° ambient room temperature
- Pans and adapter bars by others
- Environmentally friendly HFC-404A refrigerant
- One year parts and 90 day labor standard warranty

Options & Accessories

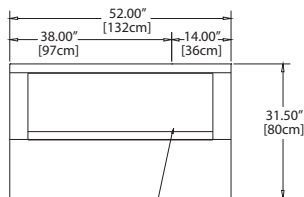
- Stainless steel end or back
- Laminate facing (full front)
- Laminate end or back
- Polyethylene or composite cutting board
- Condensate evaporator (1 per coil) for base
- Tray rack
- Drawers in lieu of one door, 19", 24", 27" or 32"
- Locks
- Cold pan drain
- 230V/50 cycle*

* Inclusion of this option will alter the electrical specifications

F18DC

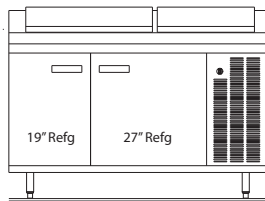


Plan View
F18DC52

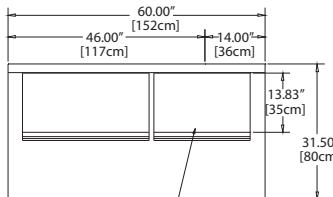


52.00" raised rail sized to accommodate (12) 1/6 size pans 6" deep

Elevation View
F18DC52

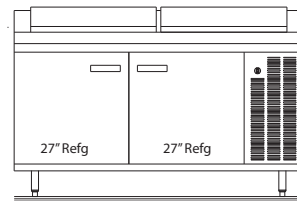


Plan View
F18DC60

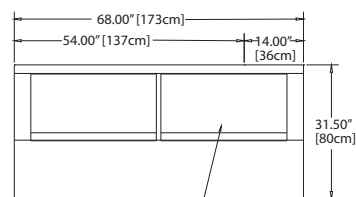


60.00" raised rail with (2) openings sized to accommodate (8) and (6) 1/6 size pans 6" deep

Elevation View
F18DC60

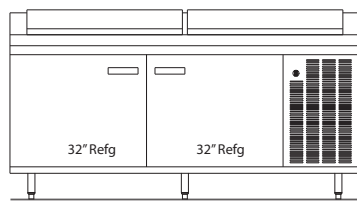


Plan View
F18DC68

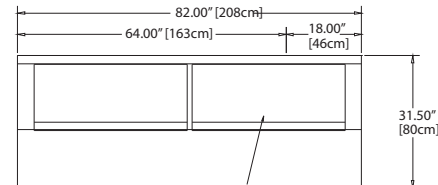


68.00" raised rail with (2) openings sized to accommodate (8) 1/6 size pans 6" deep each

Elevation View
F18DC68

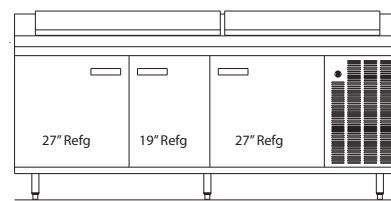


Plan View
F18DC82

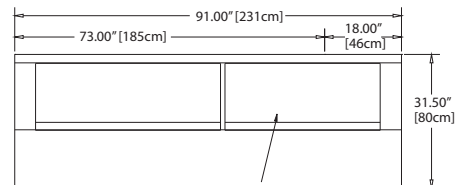


82.00" raised rail with (2) openings sized to accommodate (10) 1/6 size pans 6" deep each

Elevation View
F18DC82

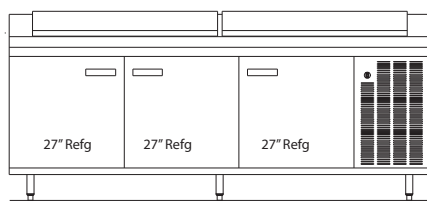


Plan View
F18DC91

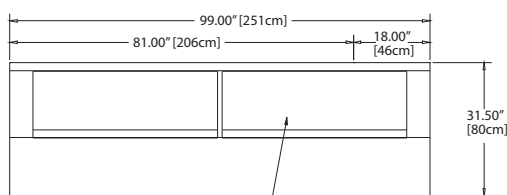


91.00" raised rail with (2) openings sized to accommodate (12) and (10) 1/6 size pans 6" deep

Elevation View
F18DC91

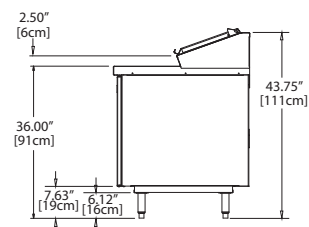


Plan View
F18DC99



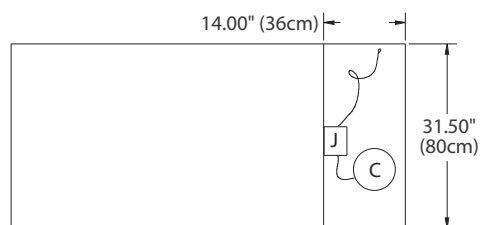
99.00" raised rail with (2) openings sized to accommodate (12) 1/6 size pans 6" deep each

Elevation View
F18DC99

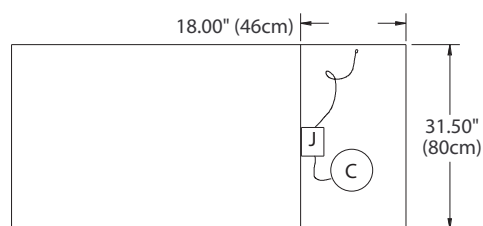


End View
All Models

Mechanical Data



Plan View
F18DC52, F18RC60, F18DC68

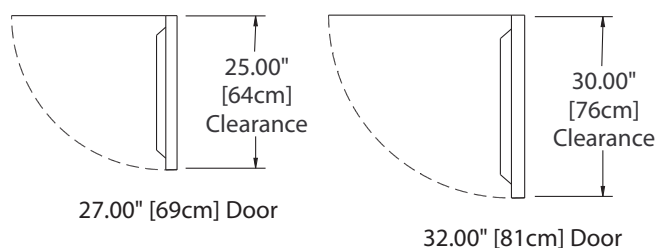
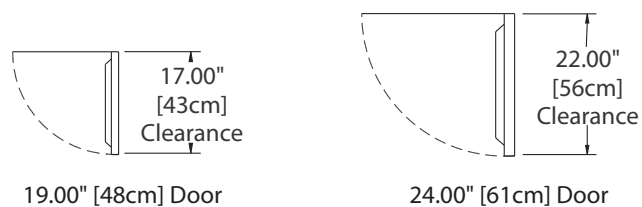


Plan View
F18DC82, F18DC91, F18DC99

J = Junction Box w/8FT (2.4M) Cord & Plug
C = Condensing Unit

Note: Unobstructed airflow must be maintained to insure unit performance and maintain warranty.

Door Swing



F18DC

Model	Number Of Doors	Number Of Pans	Storage Ft ³	Shelf Area Ft ²	H.P.	Amps	Ship Weight Lbs/Kg	BTU Design Load Base/Rail	BTU Cap Base/Rail
F18DC52	(2) 19"	12	10.50	5.12	1/4	10	520/236	547/529	1903/1061
F18DC60	19" & 27"	14	13.00	6.51	1/3	12	560/254	625/617	2314/1121
F18DC68	(2) 27"	16	15.96	7.90	1/3	12	650/295	703/794	3097/1544
F18DC82	(2) 32"	20	18.82	9.64	1/2	14	720/327	800/882	3097/1648
F18DC91	(2) 27" & 19"	22	20.86	10.29	1/2	14	750/340	962/1058	3807/1839
F18DC99	(3) 27"	24	23.56	11.85	1/2	14	775/352	1032/1147	5286/2191

Delfield reserves the right to make changes to the design or specifications without prior notice.



F18DC

31.5" (80cm) Deep Self-Contained Quick Glance Rail

Specifications

Exterior top is one-piece, 16-gauge stainless steel, with integral 2.12" (5.4cm) high square nosing on front. Top has a mechanically cooled refrigerated raised rail at rear with openings to accommodate 1/6 size pans. Pans and adapter bars are provided by others. Pans are recessed .88" in the front for easy access and 3.38" in the rear for proper cooling (see cross section). Rail interior is 22-gauge stainless steel. Raised rail openings have 20-gauge stainless steel hinged removable lids. Unit is equipped with separate expansion valve and on/off switch for refrigerated rail. Temperature in top opening to maintain 33°F (1°C) to 41°F (5°C), at 86°F ambient room temperature, meeting NSF7 requirements.

Exterior Back and Bottom are 24-gauge galvanized steel. Exterior ends are finished with 18-gauge galvanized steel.

Base Interior is 22-gauge stainless steel back and bottom. Base interior ends and door frames are thermoformed ABS plastic. Base is insulated with 1.5" (3.8cm) high density foamed in place polyurethane.

Door(s) have a 22-gauge stainless steel exterior front, with thermoformed ABS plastic interior liner, black recessed handle and snap in magnetic gasket which is easily replaceable. Each interior door section has (1) removable epoxy coated wire shelf.

Refrigeration System Components are HFC-404A. Base has a blower coil assembly with expansion valve located behind door mullion. Base is equipped with independently controlled thermostat and solenoid valve. On/off switch for unit is located behind the hinged panel.

Legs: Unit is mounted on 6.13" (15.6cm) high adjustable stainless steel legs.

Electrical connections are 115 volt, 60 Hertz, single phase. Unit is supplied with 8' cord and plug.

