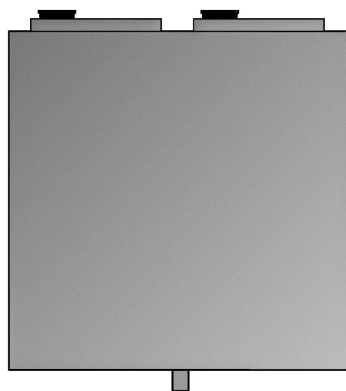




PROJECT	
ITEM #	
QUANTITY	DATE
APPROVAL	

**FF**

## Built-in remote ice cream dispensers



**Model FF-2**

### Short form specifications

The exterior sides and top edge shall be 20-gauge galvanized steel. Exterior bottom to be 14-gauge galvanized steel.

Inner liner shall be water-tight and constructed of 22-gauge stainless steel with a 1.25" (3.2cm) I.P.S. drain. Opening(s) shall have throat liners constructed of high impact plastic. Unit to be insulated with foamed-in-place polyurethane insulation with a non-conductive top breaker strip.

Each opening shall have an insulated, stainless steel folding lid with high impact plastic liner, molded rubber edge and black plastic handles.

Each self-leveling mechanism shall be field adjustable by adding or removing stainless steel extension springs in the elevator housing inside the unit. The elevators shall be connected by removable platform carriers constructed of 18-gauge stainless steel.

(6) anodized aluminum divider trays will be supplied per opening. NOTE: See chart on back for ice cream storage capacity.

Refrigeration system (provided by others) shall use HFC-404A refrigerant. An expansion valve and copper tubing connection to the remote refrigeration system shall be provided.

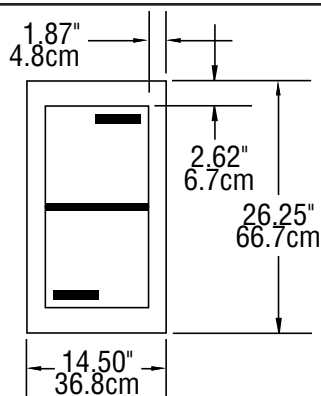
NOTE: Temperature and pressure controls are not provided on remote models.

### Optional accessories & modifications

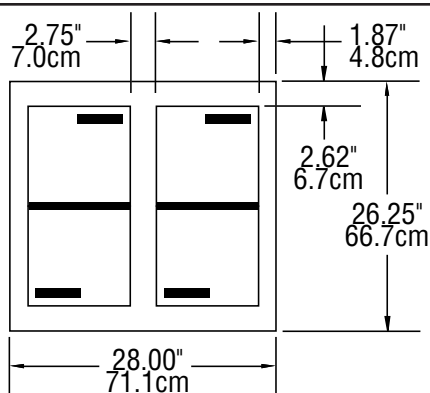
- Lid locking device
- Wire baskets

This equipment is intended for storage and/or display of pre-packaged products only.

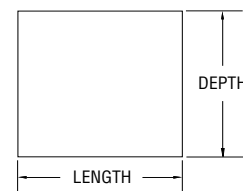


**Built-in remote ice cream dispensers**


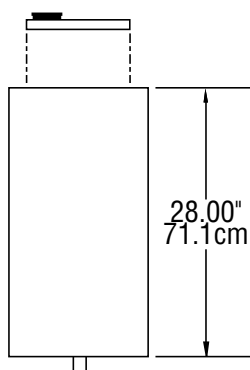
**PLAN VIEW  
MODEL FF-3324**



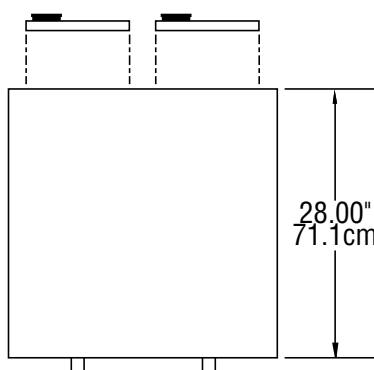
**PLAN VIEW  
MODEL FF-2**



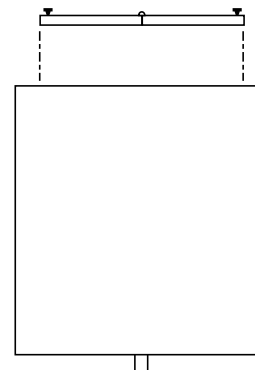
**CUTOUT ORIENTATION  
(PLAN VIEW)**



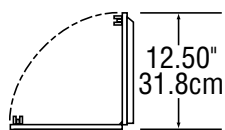
**ELEVATION VIEW  
MODEL FF-3324**



**ELEVATION VIEW  
MODEL FF-2**



**RIGHT END VIEW  
ALL FF MODELS**



**LID OPENING DETAIL  
ALL FF MODELS**

MODEL NUMBER	CUTOUT DIMENSIONS (L x D)	CAPACITY	HORSE- POWER†	BTU LOAD	EVAP. TEMP.	SHIP WEIGHT
<b>FF-3324</b>	(1) 10.75" x 21.00" (1) 27.3cm x 53.3cm	210 three-ounce ice cream cups	1/4†	430	-12°F -24°C	215 lbs 98 kg
<b>FF-2</b>	(2) 10.75" x 21.00" * (2) 27.3cm x 53.3cm*	420 three-ounce ice cream cups	1/3†	710	-14°F -26°C	290 lbs 132 kg

\* requires 2.75" (7.0cm) between each cutout

† FF models require remote refrigeration systems; horsepower ratings shown are recommended