



PROJECT	
ITEM #	
QUANTITY	DATE
APPROVAL	

**MFSC****Built-in self contained milk or beverage dispensers****Short form specifications**

The exterior sides and top edge shall be 20-gauge galvanized steel.  
Exterior bottom to be 14-gauge galvanized steel.

Inner liner shall be water tight and constructed of 22-gauge stainless steel with a 1.25" (3.2cm) I.P.S. drain. Opening(s) shall have throat liners constructed of high impact plastic. Unit to be insulated with foamed-in-place polyurethane insulation with a non-conductive breaker strip.

Each opening shall have an insulated, stainless steel folding lid with high impact plastic liner, molded rubber edge and black plastic handles.

(1) stainless steel louver shall be provided for installation in the cabinet to allow proper airflow to the condensing unit. Each self-leveling mechanism shall be field adjustable by adding or removing stainless steel extension springs in the elevator housing inside the unit. The elevators shall be connected by removable platform carriers constructed of 18-gauge stainless steel.

Refrigeration system shall use HFC-134a refrigerant. Refrigerant flow shall be controlled by an expansion value. Cabinet shall maintain 36°F to 40°F (2°C to 4°C) temperature with lids closed for storage. Refrigeration system shall be controlled by a pressure control, located near the condensing unit.

Electrical connections shall be 115 volt, 60 cycle, and single phase. Unit shall have a 9' (2.7m) long electrical cord and NEMA 5-15P installed at the mechanical end.

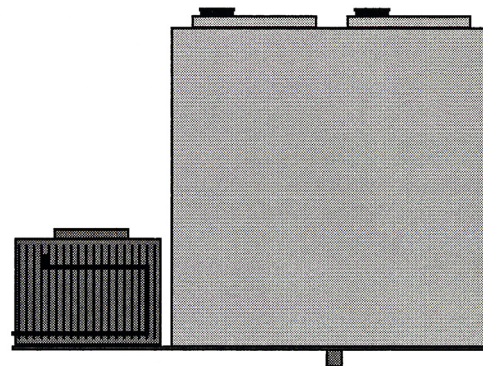
**THE FOLLOWING APPLIES TO MODELS MFSC-2821, MFSC-31, MFSC-44 AND MFSC-57 ONLY:**

(6) anodized aluminum divider trays will be supplied per opening.

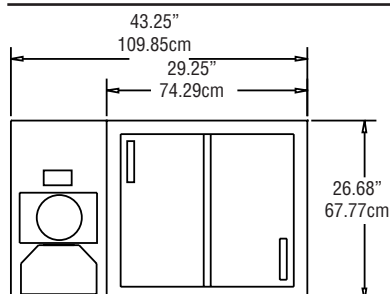
NOTE: See chart on back for milk storage capacity.

**Optional Accessories & Modifications**

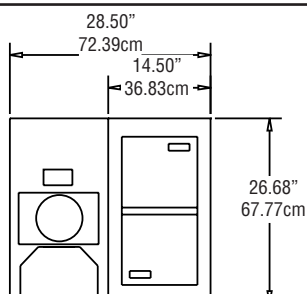
- Lid locking device
- Wire baskets (not available on MFSC-2020)
- Lexan® covers
- Special voltages (contact factory)

**Model MFSC-31**

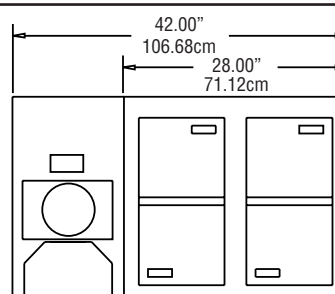
## Built-in self contained milk or beverage dispensers



PLAN VIEW MODELS MFSC-2020

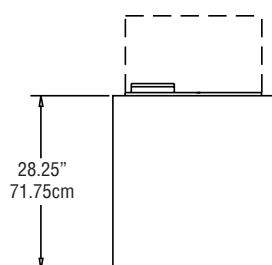


PLAN VIEW  
MODELS MFSC-2821

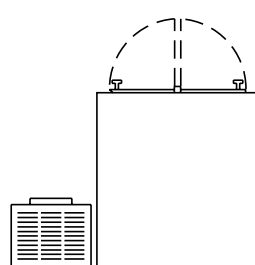


PLAN VIEW MODELS MFSC-31

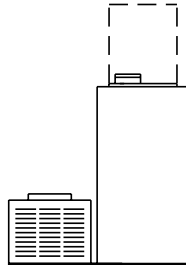
**INSTALLATION NOTE:**  
Refrigeration system is designed so that air will flow into the compressor area through the provided louver. Any restriction to this air flow path will void the warranties.



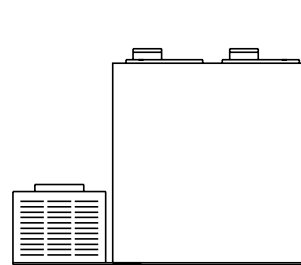
RIGHT END VIEW  
MODEL MFSC-2020



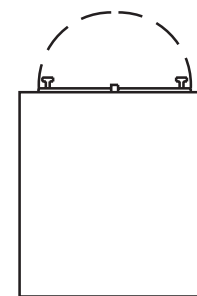
ELEVATION VIEW  
MODEL MFSC-2020



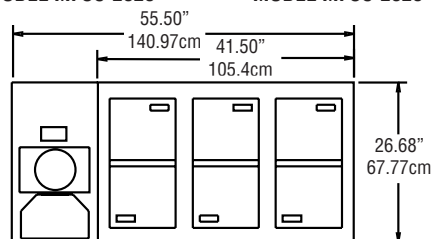
ELEVATION VIEW  
MODEL MFSC-2821



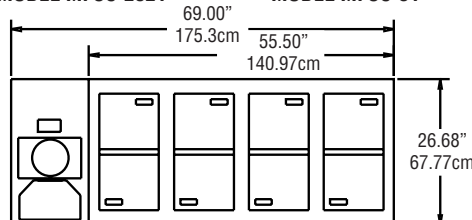
ELEVATION VIEW  
MODEL MFSC-31



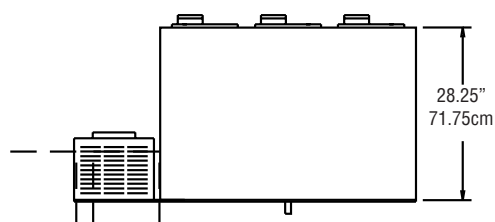
RIGHT END VIEW  
MODEL MFSC-2821,  
MFSC-31, MFSC-44,  
& MFSC-57



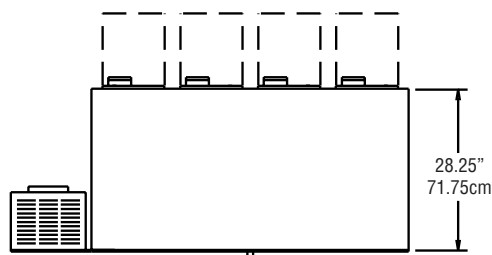
PLAN VIEW MODELS MFSC-44



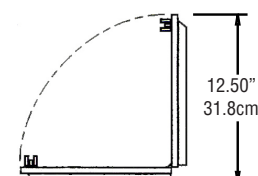
PLAN VIEW MODELS MFSC-57



ELEVATION VIEW MODELS MFSC-44



ELEVATION VIEW MODELS MFSC-57



LID OPENING DETAIL  
MODELS MFSC-2821,  
MFSC-31, MFSC-44 &  
MFSC-57

MODEL NUMBER	CUT OUT DIMENSIONS(LxD)	CAPACITY	HORSE POWER	AMPS	BTU LOAD	BTU CAPACITY	SHIP WEIGHT
MFSC-2020	(1) 25.25" x 22.25" (1) 64.1cm x 56.5cm	n/a	1/4	5.0	300	1225	303lbs 137kg
MFSC-2821	(1) 10.75 x 21.00" (1) 27.3cm x 53.3cm	126 half pint cartons	1/4	5.0	260	1170	267lbs 121kg
MFSC-31	(2) 10.75 x 21.00"* (2) 27.3cm x 53.3cm*	252 half pint cartons	1/4	5.0	300	1210	306lbs 139kg
MFSC-44	(3) 10.75 x 21.00"* (3) 27.3cm x 53.3cm*	378 half pint cartons	1/4	5.0	410	1350	413lbs 187kg
MFSC-57	(4) 10.75 x 21.00"* (3) 27.3cm x 53.3cm*	504 half pint cartons	1/4	5.0	520	1450	461lbs 209kg

\*requires 2.75 (7.0cm) between each cutout

The Delfield Company, 980 S. Isabella Rd., Mt. Pleasant, MI 48858, U.S.A. • (800) 733-8821 • Fax (800) 669-0619 • [www.delfield.com](http://www.delfield.com)

Delfield reserves the right to make changes in design or specifications without prior notice. ©2002 The Delfield Company. All rights reserved. Printed in U.S.A.

MSMFSC 05/02