



STEARNS PRODUCT DEVELOPMENT CORPORATION

Operations Manual

CS1500

Clam Shell Grill

Doughpro

20281 Harvill Ave
Perris, CA 92570

Phone (951) 657-0379

Toll Free (800) 624-6717

Fax (951) 657-4594

Website: www.doughpro.com

E-Mail: info@doughpro.com

Listed:



Operation Instructions

Please read carefully before attempting to use this appliance.

- Step 1.** Carefully unpack and clean grill plates with mild soap then sponge clean with cold water.
- Step. 2.** Place in location where it will be used allowing for clearances per the dimensions indicated.

WARNING! Allow 2" minimum clearance between adjacent equipment and/or wall areas.

Do not touch hot surfaces.

- Step 3.** Plug into proper 3 prong wall outlet. If other appliances are connected to the same circuit make sure the total load does not exceed maximum ampacity of the circuit. Electrical information is as follows:

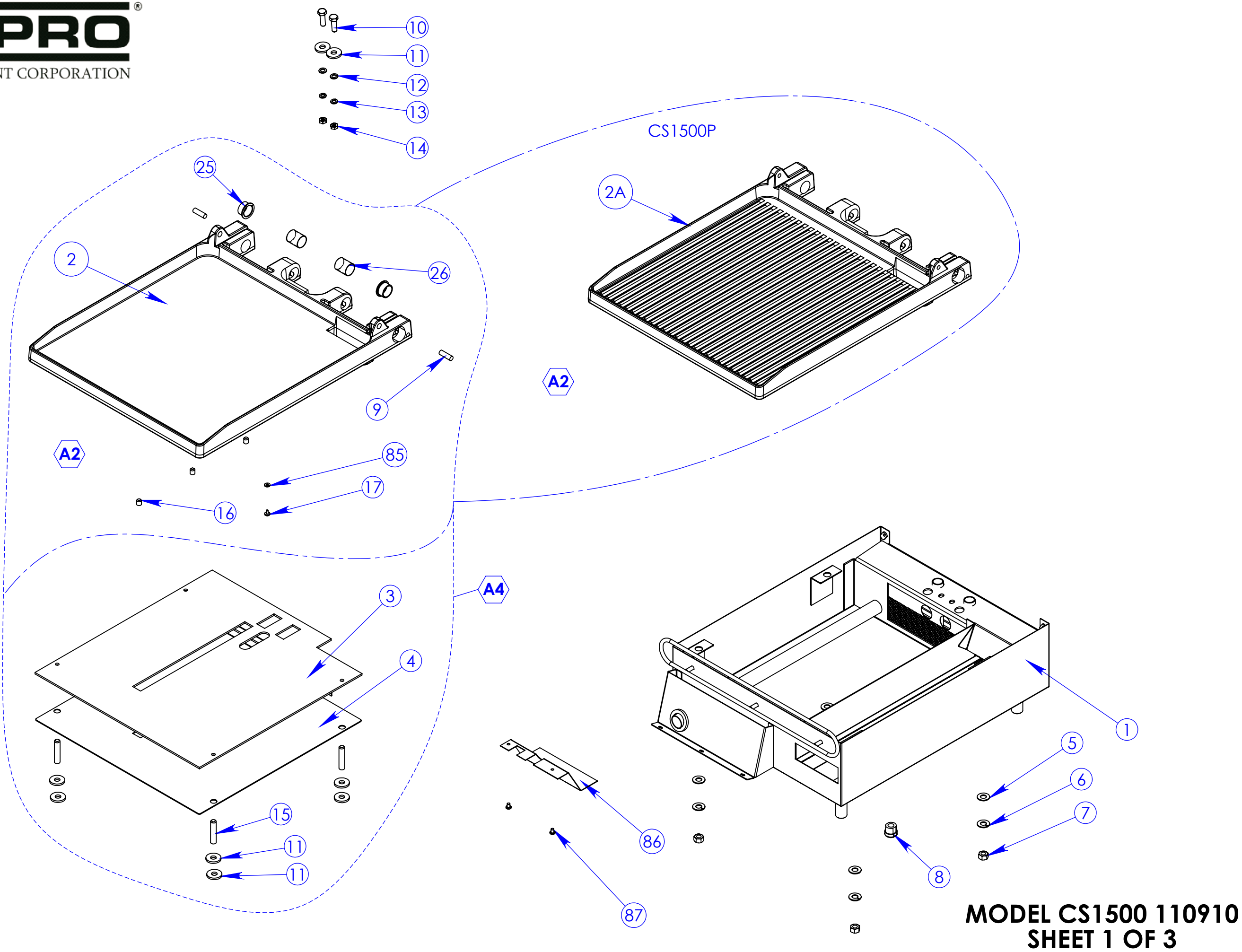
120V/60Hz/1 phase/2200W/18.3 Amps
or
220V/60Hz/1 phase/2200W/9.2 Amps

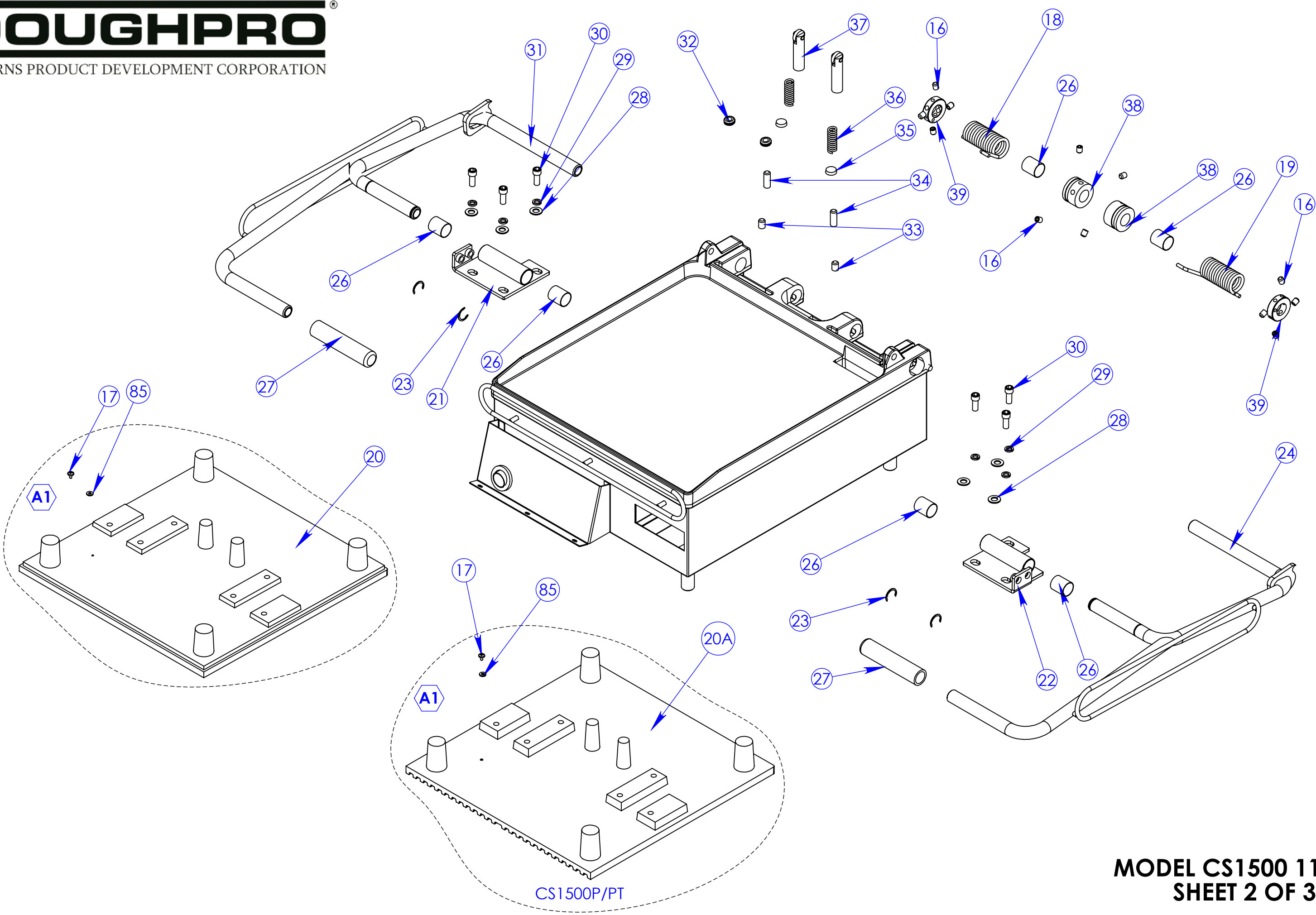
- Step 4.**

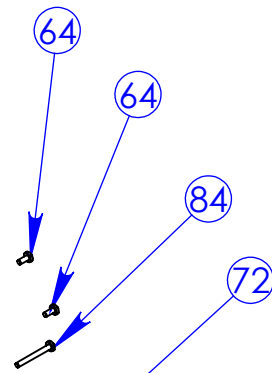
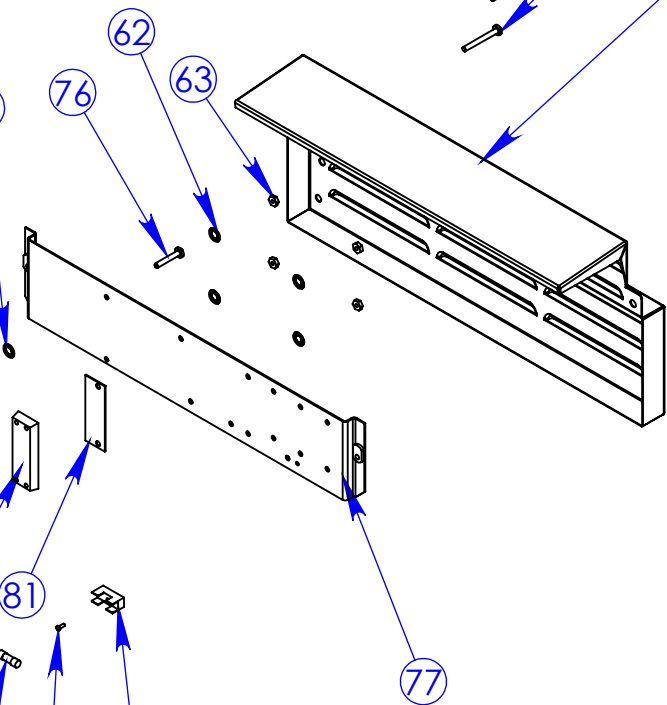
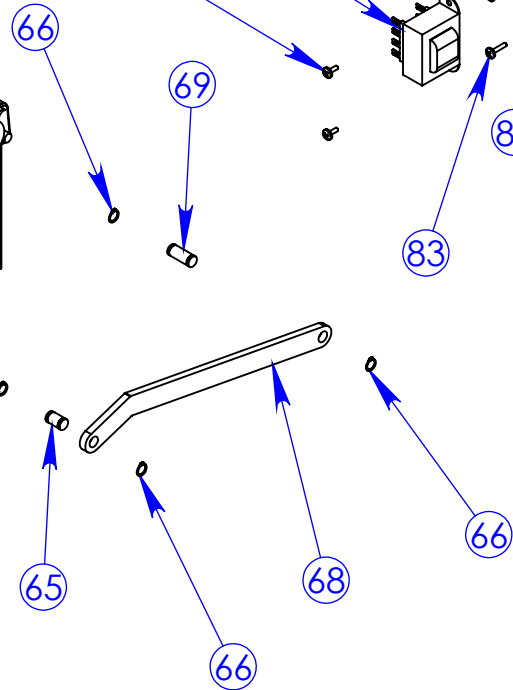
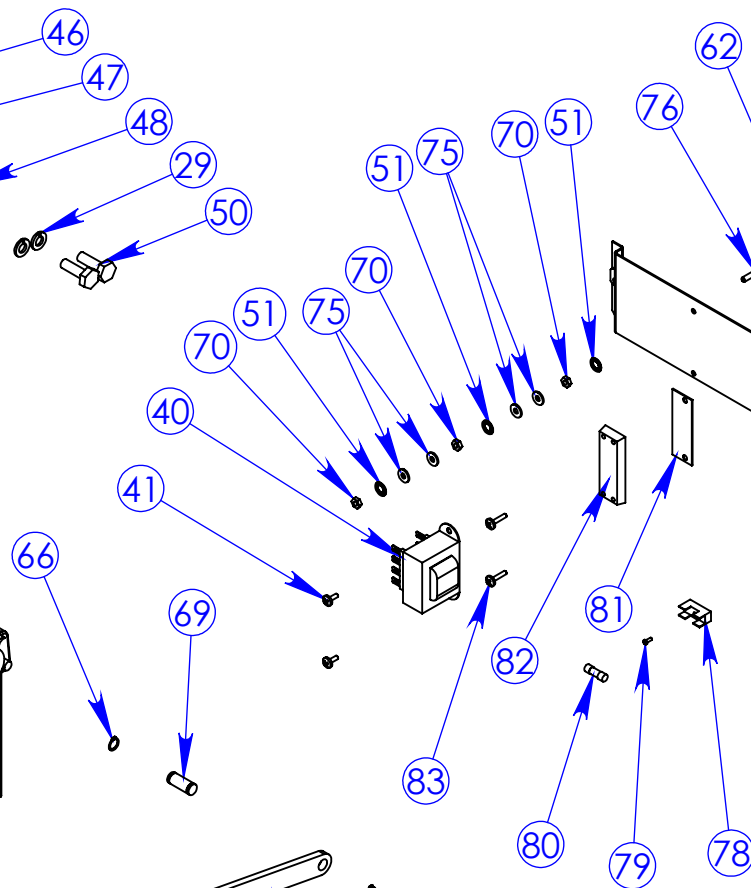
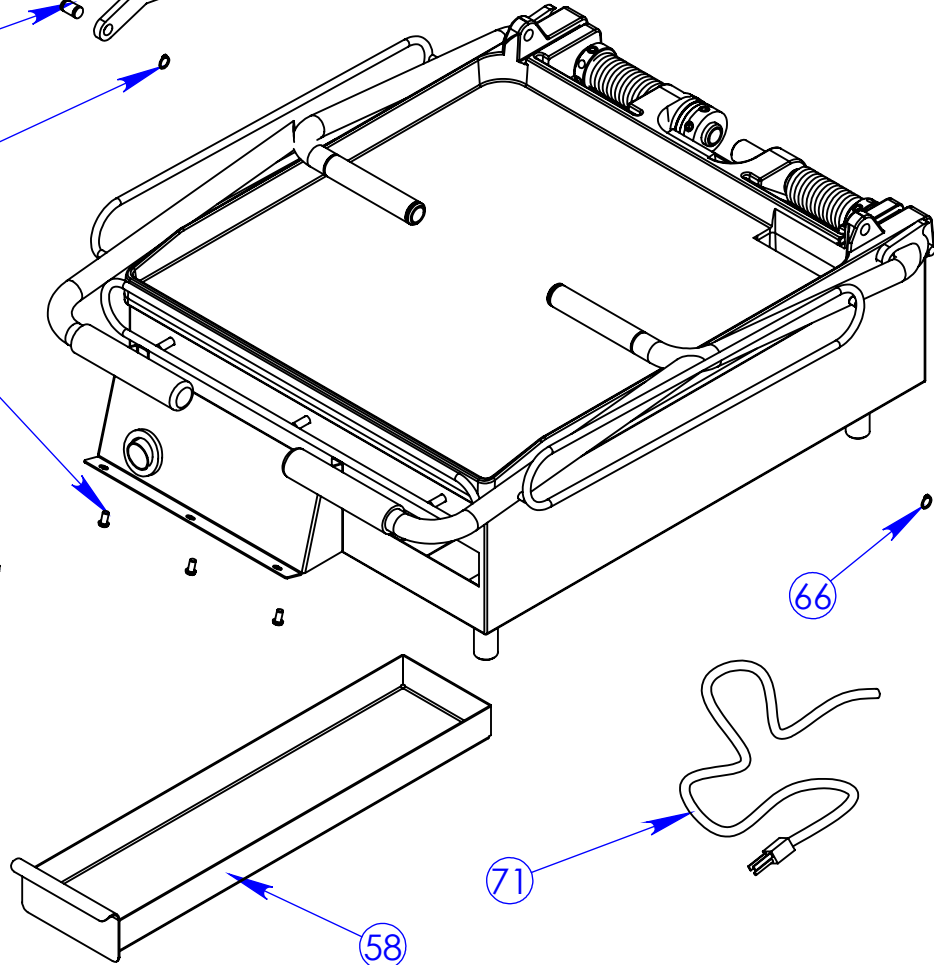
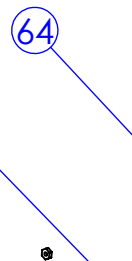
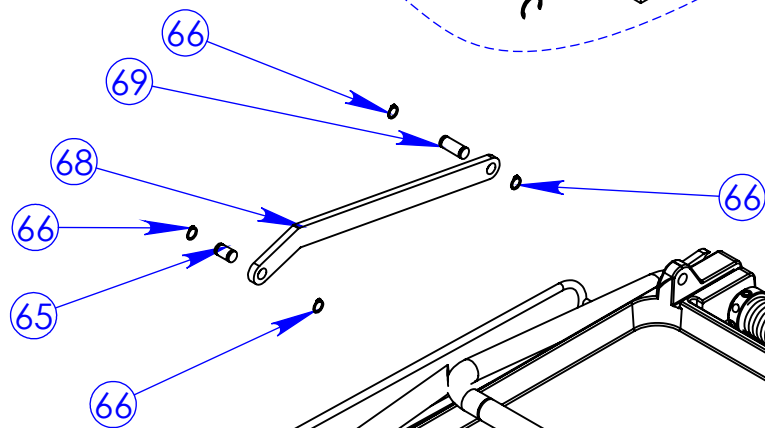
Cleaning Instructions

NOTE! Always turn off power and allow to cool down before attempting to clean. ***Never submerge grill in water or other liquid nor use mineral spirits or other flammable material to clean this appliance.***

Clean stainless steel and griddle surfaces with soap and water using a soft, clean cloth periodically as required, but at least once daily. Never use harsh abrasives. Use only non-abrasive scouring pads when required.





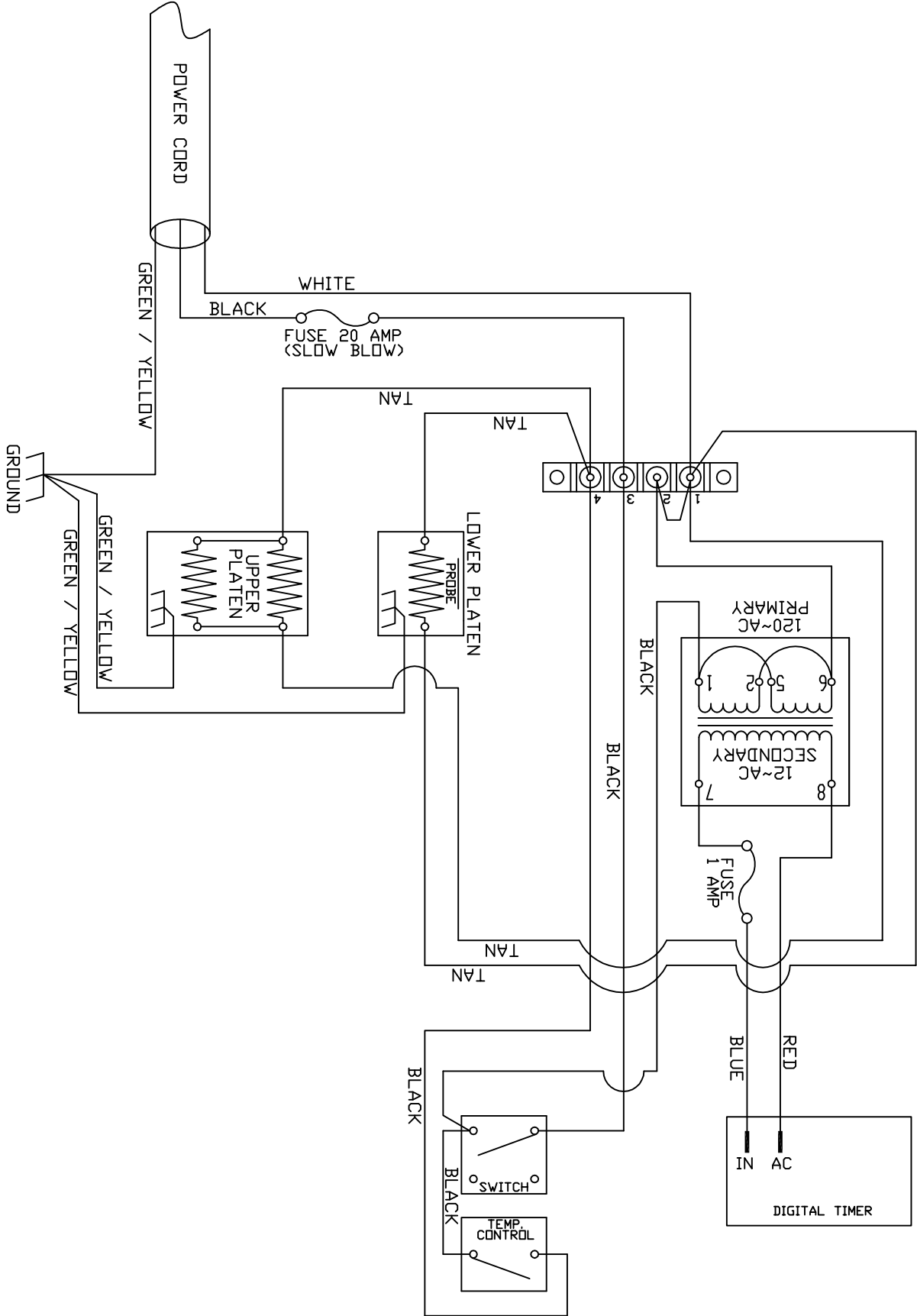


CS1500

		A MODEL	B MODEL	C MODEL	E MODEL	QTY.
		CS1500/CS1500P/CS1500PT	CS1500/CS1500P/CS1500PT	CS1500/CS1500P/CS1500PT	CS1500E/CS1500PE/CS1500PT	
ITEM #	PART NAME	120 V	220 V	220 V	208 V	
1	LOWER WRAP AROUND SHROUD ASSEMBLY	110115501	110115501	110115501	110115501	1
2	LOWER PLATEN	110100700220	110100700220	110100700220	110100700220	1
2A	LOWER PLATEN PANINI	1101155132120	1101155132220	1101155132220	1101155132208	1
3	LOWER PLATEN INSULATION	110115542	110115542	110115542	110115542	1
4	COVER, LOWER PLATEN ASSEMBLY	110115506	110115506	110115506	110115506	1
5	WASHER, SAE 3/8	WSAE38	WSAE38	WSAE38	WSAE38	4
6	WASHER, LOCK 3/8	WL38	WL38	WL38	WL38	4
7	HEX NUT 3/8-16	NH3816	NH3816	NH3816	NH3816	4
8	STRAIN RELIEF	MPSS168	MPSS168	MPSS168	MPSS168	1
9	PIN, BACK STOP	110115543	110115543	110115543	110115543	2
10	SCREW BOLT HEX HEAD 1/4-20 x 1.0	BH14201	BH14201	BH14201	BH14201	2
11	GREEN INSULATION WASHER	C4401	C4401	C4401	C4401	10
12	WASHER, SAE 1/4	WSAE14	WSAE14	WSAE14	WSAE14	2
13	WASHER, LOCK 1/4	WL14	WL14	WL14	WL14	2
14	NUT, HEX 1/4-20	NH1420	NH1420	NH1420	NH1420	2
15	SCREW SET 3/8-16 x 1-3/4	SST3816134	SST3816134	SST3816134	SST3816134	4
16	SCREW SET KNURED CUP POINT 5/16-18 x 3/8	SST5161838KN	SST5161838KN	SST5161838KN	SST5161838KN	15
17	SCREW, PHILLIPS, PAN HEAD 6-32 x 1/4	SP63214	SP63214	SP63214	SP63214	2
18	COUNTER BALANCE SPRING LEFT HAND	1101023154L	1101023154L	1101023154L	1101023154L	1
19	COUNTER BALANCE SPRING RIGHT HAND	1101023154R	1101023154R	1101023154R	1101023154R	1
20	UPPER PLATEN	110121731120	110121731220	110121731220	110121731208	1
20A	UPPER PLATEN PANINI	110121740120	110121740220	110121740220	110121740208	1
21	CLEVIS ASSEMBLY LEFT HAND	110115503	110115503	110115503	110115503	1
22	CLEVIS ASSEMBLY RIGHT HAND	110115504	110115504	110115504	110115504	1
23	E-CLIP, RETAINING RING	LCC3478	LCC3478	LCC3478	LCC3478	4
24	HANDLE RIGHT ASSEMBLY	110115521	110115521	110115521	110115521	1
25	FLANGED BUSHING TEFLON 1/2" LONG	110115563	110115563	110115563	110115563	2
26	BUSHING TEFLON 1" LONG	110115541	110115541	110115541	110115541	8
27	HANDLE GRIP	110901168	110901168	110901168	110901168	2
28	WASHER CUT 5/16	WC516	WC516	WC516	WC516	6
29	WASHER 5/16, LOCK	WL516	WL516	WL516	WL516	10
30	SOCKET HEAD SCREW 5/16-18 x 3/4	SSH5161834	SSH5161834	SSH5161834	SSH5161834	6
31	HANDLE LEFT ASSEMBLY	110115522	110115522	110115522	110115522	1
32	GROMMET 5/16 x 1/2	110115554	110115554	110115554	110115554	2
33	SET SCREW 3/8-16 x 1/2	SST381612	SST381612	SST381612	SST381612	2
34	SET SCREW 3/8-16 x 1.0	SST38161	SST38161	SST38161	SST38161	2
35	TUBING PAD	110115531	110115531	110115531	110115531	2
36	SPRING, DETENT	110115555	110115555	110115555	110115555	2
37	PLUNGER ASSEMBLY	110115544	110115544	110115544	110115544	2
38	HANDLE HOLDER	110115530	110115530	110115530	110115530	2
39	HANDLE SPRING ADJUSTING COLLAR	110115528	110115528	110115528	110115528	2
40	TRANSFORMER	11096975	11096975	11096975	11096975	1
41	SCREW, PHILLIPS, PAN HEAD 6-32 x 3/8	SP63238	SP63238	SP63238	SP63238	2
42	INSULATION UPPER PLATEN	110888254	110888254	110888254	110888254	1
43	N/A	N/A	N/A	N/A	N/A	N/A
44	SHROUD	110121721	110121721	110121721	110121721	1
45	SCREW, SLOTTED PAN HEAD 10-24 x 5/8 S.S.T	SPS102458S	SPS102458S	SPS102458S	SPS102458S	6
46	UPPER LEVELING SHIM	110115557	110115557	110115557	110115557	2
47	UPPER LEVELING BRACKET	110115510	110115510	110115510	110115510	2
48	WASHER 5/16 INTERNAL TOOTH LOCK	WLIT516	WLIT516	WLIT516	WLIT516	4
49	SWITCH, GUARD	110901413	110901413	110901413	110901413	1
50	SCREW BOLT HEX HEAD 5/16-18 X 1.0 S.S.T	BH516181S	BH516181S	BH516181S	BH516181S	4
51	WASHER, #8 INTERNAL TOOTH LOCK	WLIT8	WLIT8	WLIT8	WLIT8	3
52	WIRE HARNESS	1101217050	1101217050	1101217050	1101217050	1
53	PILOT LIGHT	110966018G	110966018G	110966018G	110966018G	1
54	SWITCH ASSEMBLY	110901411	110901411	110901411	110901411	1
55	TEMPERATURE CONTROLLER	1101217052	1101217052	1101217052	1101217052	1
56	INSTRUMENT HOUSING ASSY	110121711	110121711	110121711	110121711	1
57	OVERLAY	OPRCCS1500	OPRCCS1500	OPRCCS1500	OPRCCS1500	1
58	GREASE TRAY	110115505	110115505	110115505	110115505	1
59	NYLON SPACER 1/4" x .141 x 9/32 LONG	11090109	11090109	11090109	11090109	4
61	DIGITAL TIMER	110121752	110121752	110121752	110121752	1
62	WASHER, #6 INTERNAL TOOTH LOCK	WLIT6	WLIT6	WLIT6	WLIT6	10
63	NUT, HEX 6-32	NH632	NH632	NH632	NH632	8
64	SCREW, PHILLIPS, PAN HEAD 8-32 x 3/8 S.S.T	SP83238S	SP83238S	SP83238S	SP83238S	7
65	PIN, PIVOT FRONT	110115565	110115565	110115565	110115565	2
66	RETAINING RING	110115567	110115567	110115567	110115567	8

CS1500

67	N/A	N/A	N/A	N/A	N/A	N/A
68	TOP LINK	110115508	110115508	110115508	110115508	2
69	PIN, PIVOT BACK	110115566	110115566	110115566	110115566	2
70	NUT, HEX 8-32	NH832	NH832	NH832	NH832	3
71	POWER CORD	1101217174	1101217175	MPPW202	1101217175	1
72	BACK COVER	110115562	110115562	110115562	110115562	1
75	WASHER, SAE #8	WSAE8	WSAE8	WSAE8	WSAE8	4
76	SCREW, PHILLIPS. PAN HEAD 8-32 x 1.0	SP8321	SP8321	SP8321	SP8321	1
77	MOUNTING BRACKET ASSEMBLY	110115559	110115559	110115559	110115559	1
78	FUSE HOLDER 1 AMP	MPPF708	MPPF708	MPPF708	MPPF708	1
79	SCREW, PHILLIPS. PAN HEAD 2-56 x 1/4	SP25614	SP25614	SP25614	SP25614	1
80	FUSE BUSS 1 AMP	MPPF701R	MPPF701R	MPPF701R	MPPF701R	1
81	MARKER STRIP, #4 DOUBLE	MS6014	MS6014	MS6014	MS6014	1
82	4 STAGE TERMINAL BLOCK DOUBLE	6014	6014	6014	6014	1
83	SCREW, PHILLIPS. PAN HEAD 6/32 x 5/8	SP63258	SP63258	SP63258	SP63258	2
84	SCREW, PHILLIPS. PAN HEAD 8-32 x 1-1/2 S.S.T	SP832112S	SP832112S	SP832112S	SP832112S	2
85	WASHER, SAE #6	WSAE6	WSAE6	WSAE6	WSAE6	2
86	COVER, HEATER ELEMENT	110115564	110115564	110115564	110115564	1
87	SCREW, PAN HEAD PHILLIPS 6-32 X .250	SP63214ST	SP63214ST	SP63214ST	SP63214ST	2
A1	CS1500 UPPER PLATEN (WIRING ONLY)	1101217201	1101217203	1101217203	1101217202	1
A1	CS1500P/PT UPPER PLATEN (WIRING ONLY)	1101217201P	1101217203P	1101217203P	1101217202P	1
A2	CS1500 LOWER PLATEN (WIRING ONLY)	1101155207	1101155208	1101155208	1101155209	1
A2	CS1500P/PT LOWER PLATEN (WIRING ONLY)	1101155207P	1101155208P	1101155208P	1101155209P	1
A3	CS1500 UPPER PLATEN ASSEMBLY	1101217101	1101217103	1101217103	1101217102	1
A3	CS1500P/PT UPPER PLATEN ASSEMBLY	1101217101P	1101217103P	1101217103P	1101217102P	1
A2, A4	CS1500 LOWER PLATEN ASSEMBLY	1101155116	1101155117	1101155117	1101155118	1
A2, A4	CS1500P/PT LOWER PLATEN ASSEMBLY	1101155116P	1101155117P	1101155117P	1101155118P	1





PLEASE READ CAREFULLY BEFORE ATTEMPTING TO USE THIS APPLIANCE.

LIMITED MACHINE WARRANTY

WHAT IS COVERED

Stearns/Doughpro warrants the CS1500, from manufacturing defects in workmanship and material sold within the domestic United States.

HOW LONG DOES THE COVERAGE LAST

One-year warranty for parts and labor. The heating elements on the upper and lower platens have a limited lifetime warranty on the elements.

WHAT WE WILL DO

We will repair or replace the defective CS1500 on normal warranty one-year parts and labor. The heating elements on the upper and lower platen only; will be replaced by next day air service; under the normal one-year warranty. Such repair or replacement will be at the expense of Doughpro under the normal one-year warranty.

HOW TO GET SERVICE

Contact our Factory to obtain warranty service. Doughpro must issue a return authorization number, and call tag, or find the name and location of a Factory Authorized Service Center nearest you. When calling for service, please furnish the model number, serial number, and a description of the problem.

WHAT THIS WARRANTY DOES NOT COVER

THE WARRANTIES PROVIDED BY STEARNS/DOUGHPRO DO NOT APPLY IN THE FOLLOWING INSTANCES:

- Damage due to misuse, abuse, alteration, or accident.
- Improper or unauthorized repairs.
- Submerged in water.
- Dropped.
- Damage in shipment.
- Equipment exported to foreign countries.

FOR SERVICE CALL: (800) 624-6717

PROPROCESS CORPORATION

• 7328 Madison St. • Paramount, CA 90723
(562) 531-0305 • (800) 624-6717 • Fax (562) 869-7715



DOUGHPRO®

PROPROCESS CORPORATION

Website: www.doughpro.com • **E-Mail:** info@doughpro.com



Stearns Product Development Corp. 20281 Harvill Ave. Perris, Ca 92570
(951) 657-0379 Fax (951) 657-4954

Warranty & Return Policy

STEARNS PRODUCT DEVELOPMENT CORPORATION warrants all products manufactured by it against defects in workmanship or materials from the date of purchase for a period of (1) year on parts and labor. **This warranty applies to only equipment purchased and used in the United States.**

Exclusions:

1. **WOOD / GAS FIRED OVENS:** **STEARNS PRODUCT DEVELOPMENT CORPORATION** warranty applies to the main body of the oven being steel

/ refractory and insulation shall be free from defects in materials and workmanship for a period of four (10) years from the date of purchase. The gas equipment shall be free from defects in materials and workmanship for a period of one (1) year from the date of purchase. This warranty excludes the tandoori and home oven. Lifetime warranty against cracks on oven floor.

2. **TANDOORI & HOME OVENS:** **STEARNS PRODUCT DEVELOPMENT CORPORATION** warrants the Tandoori & Home Oven including gas

equipment shall be free from defects in materials and workmanship for a period of one (1) year from the date of purchase.

3. **Air compressors are excluded from this warranty**, but **STEARNS PRODUCT DEVELOPMENT CORPORATION** may act as a warranty

expeditor in certain instances regarding these compressors. The air compressor manufacturer provides a limited warranty

and a copy of this warranty is furnished with all compressors sold by **STEARNS PRODUCT DEVELOPMENT CORPORATION**. For prompt

handling of compressor warranty claims the instructions of the compressor manufacturer must be adhered to.

4. **Equipment built to special order as well as accessories** are not returnable unless defective within the terms of this warranty.

5. **In no event shall STEARNS PRODUCT DEVELOPMENT CORPORATION be liable for consequential damages arising out of the failure of**

any of its products if operated improperly or caused by normal wear or damage by operator abuse.

Returned Merchandise Policy:

Should it become necessary to return any of the company's products, the following instructions must be adhered to: First,

contact our customer service department for approval and a return authorization number. *Please have the serial number*

of your item available at that time. All merchandise must be shipped *freight prepaid* by customer or service agency.

Subject to the inspection of the product by the company, a restocking charge of 20% of the Net purchased price paid to

STEARNS PRODUCT DEVELOPMENT CORPORATION will be assessed. Merchandise may not be returned for credit without *prior written*

approval of **STEARNS PRODUCT DEVELOPMENT CORPORATION**. Collect shipments *will not* be accepted. No returns after 60 days of original

shipment date on machines. Purchased parts may not be returned after 30 days.

If upon inspection by **STEARNS PRODUCT DEVELOPMENT CORPORATION** or its authorized agent it is determined the equipment has not been

used in an appropriate manner, has been modified, or has not been properly maintained, or has been subject to misuse, misapplication, neglect, abuse, accident, unauthorized modification, damage during transit, delivery, fire, flood, act or war, riot or act of God, then this warranty shall be deemed null and void.

Terms & Conditions:

1. Prices indicated in the PRICE LIST are suggested retail prices and are shown in U.S. DOLLARS.

2. Terms of Payment: 1% 10 days, NET 30 days.

3. **NEW ACCOUNTS:** Satisfactory credit information must be provided before open account status can be extended.

Unless agreed otherwise, all shipments will be made C.O.D., CASH IN ADVANCE.

4. **PRICING:** Prices, specifications, model numbers, capacities and accessories are subject to change without notice.

5. **FREIGHT / ROUTING:** Method of shipment will be determined by **STEARNS PRODUCT DEVELOPMENT CORPORATION** unless otherwise

advised by PURCHASER.

6. **DAMAGED CLAIMS:** All merchandise shipped at purchaser's risk. Inspection must be made by purchaser at time

goods are received. If goods are damaged, the PURCHASER shall request that the agent of the transportation

company make a written notation on the proper shipping documents immediately and then file a claim for damage.

GOODS DAMAGED IN SHIPMENT ARE NOT RETURNABLE.

7. **RETURNS:** Machines may not be returned after 60 days. Purchased parts may not be returned after 30 days. A

restocking fee of 20% will be assessed on non-warranty returns.

8. **TAXES:** Prices indicated herein DO NOT include State, Federal, Local or foreign taxes or duties, nor do they include fees, permits, insurance or other levies, all of which are the responsibility of the purchaser.

9. All orders are subject to acceptance by **STEARNS PRODUCT DEVELOPMENT CORPORATION**.

10. Possession of this price list shall not be considered an offer to sell.