



## Direct Steam Kettle model FT

### Description

Kettle shall be Groen Model FT (specify 40, 60, 80, 100, 125 or 150-gallon) stainless steel, 2/3 jacketed unit operating from direct steam.

### Construction

Kettle shall be of type 316 stainless steel, solid one-piece welded construction. Unit shall be provided with a heavy, durable bar rim with a continuous seal weld on the underside to ensure maximum durability and sanitation. Unit provided with faucet bracket as standard.

### Finish

Interior of kettle shall be polished to a 180 emery grit finish. Exterior of kettle shall be finished to a bright high buff finish, ensuring maximum ease in cleaning and maintaining brilliant appearance.

### ASME Code

Unit shall be ASME shop inspected, stamped and registered with the National Board for operation up to a maximum working pressure of 25 PSI.

### Sanitation

Unit shall be designed and constructed to meet NSF and known health department and sanitation codes, and be NSF listed.

### Drawoff

Unit shall have a 2" sanitary tangent drawoff which is a 316 stainless steel compression disc drain valve, for easy disassembly without tools. Larger 3" drawoffs available. The drain outlet shall be equipped with a removable 1/4" perforated stainless steel strainer.

### Cover

Cover shall be one piece stainless steel dome shaped cover, hinged and counterbalanced, with Model 51 spring assisted cover actuator.

### Steam Pressure

Kettle shall operate dependably at any steam pressure between 5 and 25 PSI. Higher working pressure available.

### Mounting

Unit shall be mounted on an all stainless steel, tubular legs, continuously welded to kettle, with stainless steel adjustable floor flanges.

### Installation

Remote steam source required. Steam trap assembly is required and not provided unless ordered as an option. See dimension L on other side for steam inlet size and number.

Model FT shown



### Options/Accessories

- ☐ Basket inserts (TRI-BC)
- ☐ Water fill faucets
- ☐ Higher working pressure
- ☐ 3" tangent drawoff
- ☐ Cold water cooling
- ☐ Steam trap assemblies
- ☐ Kettle brush kit
- ☐ 1/8" perforated disc strainer
- ☐ 1/4" perforated disk strainer
- ☐ Solid disc strainer
- ☐ Steam regulators
- ☐ Contour measuring strip
- ☐ Gallon etch marks

### Origin of Manufacture

Kettle shall be designed and manufactured in the United States.

**Stainless Steel  
2/3 Steam Jacketed Kettle**

**Floor Mounted  
Stationary  
Direct Steam  
40 to 150-Gallon  
Capacities**

### Short Form

Groen Model FT (Specify gallons) stainless steel, 2/3 jacketed, direct steam stationary kettle. Solid one piece welded construction, with heavy duty reinforced bar rim. 2" sanitary tangent drawoff standard. Standard units fitted with faucet bracket and one piece dome cover with spring assisted cover actuator. NSF listed, ASME code constructed for 25 PSI. Unit to be mounted on stainless steel tubular legs, continuously welded to kettle, with stainless steel adjustable floor flanges. Made in USA.



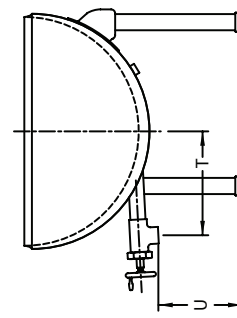
### Applications

Wet roasting meats  
Soups  
Stews  
Stocks  
Poultry  
Sauces  
Pie Fillings  
Vegetables  
Pasta  
Rice  
Gravies

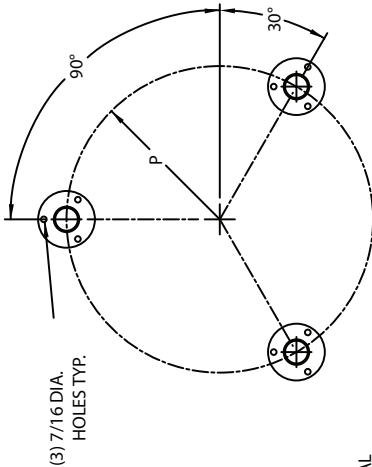
| TABLE OF DIMENSIONS |        |      |        |      |        |      |        |      |        |      |  |
|---------------------|--------|------|--------|------|--------|------|--------|------|--------|------|--|
| CAP.<br>GAL.        | 20     |      | 40     |      | 60     |      | 80     |      | 100    |      |  |
| DIM.                | INCH   | MM   | INCH   | MM   | INCH   | MM   | INCH   | MM   | INCH   | MM   |  |
| A                   | 20     | 508  | 26     | 660  | 30     | 762  | 32     | 813  | 36     | 914  |  |
| B                   | 27 1/2 | 699  | 33     | 838  | 37     | 940  | 38     | 965  | 40     | 1016 |  |
| C                   | 24     | 610  | 30     | 762  | 34     | 864  | 36     | 914  | 40     | 1016 |  |
| D                   | 59     | 1499 | 65     | 1651 | 67     | 1702 | 73     | 1854 | 77     | 1956 |  |
| E                   | 36     | 914  | 36     | 914  | 39     | 991  | 43     | 1092 | 44     | 1118 |  |
| F                   | 12     | 305  | 14 1/2 | 368  | 15     | 381  | 15     | 381  | 15     | 381  |  |
| G                   | 15 3/4 | 400  | 11 3/4 | 299  | 11 3/4 | 299  | 11 3/4 | 299  | 11 3/4 | 299  |  |
| H                   | 5 1/2  | 140  | 7      | 178  | 8      | 203  | 8      | 203  | 8      | 203  |  |
| J                   | 8      | 203  | 10 1/4 | 260  | 11 1/2 | 292  | 12 1/4 | 311  | 13 1/2 | 343  |  |
| K                   | 18 7/8 | 479  | 15 3/4 | 400  | 16 1/4 | 413  | 16 1/2 | 419  | 17 1/2 | 445  |  |
| L                   | 17     | 432  | 14     | 356  | 13 1/2 | 343  | 14     | 356  | 14     | 356  |  |
| M                   | 1 1/2  | -    | 1 1/2  | -    | 1 1/2  | -    | 3/4    | -    | 3/4    | -    |  |
| N                   | 1 1/2  | -    | 3/4    | -    | 3/4    | -    | 1      | -    | 1      | -    |  |
| P                   | 9 1/4  | 235  | 11 3/4 | 299  | 13 1/2 | 343  | 14 1/4 | 362  | 15 7/8 | 403  |  |
| R                   | 18     | 457  | 25     | 635  | -      | -    | -      | -    | -      | -    |  |
| S                   | 18 1/2 | 470  | 22     | 559  | 25     | 635  | 29     | 734  | 30     | 762  |  |
| T                   | 14     | 356  | 16     | 406  | 17     | 432  | 17     | 432  | 17     | 432  |  |
| U                   | 14 3/4 | 375  | 10 3/4 | 273  | 10 3/4 | 273  | 10 3/4 | 273  | 10 3/4 | 273  |  |

NOTES:

1. KETTLE MUST BE SECURELY ANCHORED TO FLOOR.
2. FLOOR FLANGES ARE THREADED AND HEIGHT ADJUSTABLE.
3. SANITARY (1) PIECE DOME COVER SHOWN - FURNISHED ON 20 & 40 GALLON SIZES.
4. MODEL # 51 COUNTER BALANCED COVER FURNISHED ON KETTLES 60 GALLONS AND OVER.
5. POSITION CENTER OF TANGENT DRAW-OFF SPOUT 4"-5" OVER FLOOR DRAIN FOR PROPER DRAINAGE.
6. DIMENSIONS IN BRACKETS ( ) ARE MM.



OPTIONAL 3"  
TANGENT DRAW-OFF

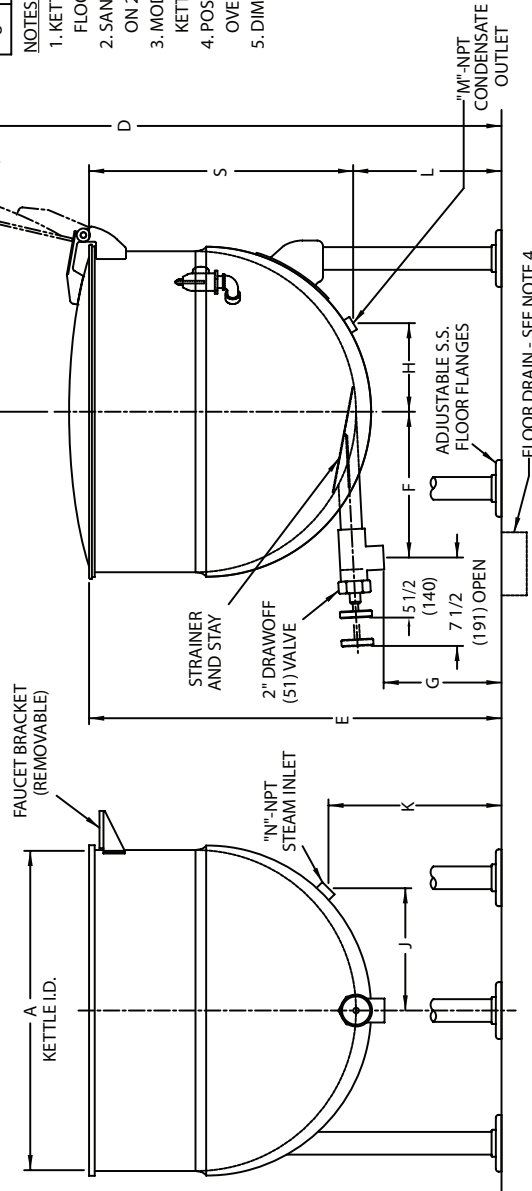


FRONT OF KETTLE

PLAN VIEW OF LEGS

COVER OPEN

NOTE: COVER NOT SHOWN IN THIS VIEW



FRONT VIEW

RIGHT SIDE VIEW

FLOOR DRAIN - SEE NOTE 4

"M"-NPT  
CONDENSATE  
OUTLET

ADJUSTABLE S.S.  
FLOOR FLANGES

7 1/2  
(191) OPEN

5 1/2  
(140)

2" DRAW-OFF  
(51) VALVE

STRAINER  
AND STAY

Faucet Bracket  
(REMOVABLE)

"N"-NPT  
STEAM INLET

KETTLE I.D.

ASME APPROVED  
SAFETY VALVE

CONDENSATE  
OUTLET

STEAM INLET

OPTIONAL  
FAUCET

B

C

D

E

F

G

H

J

K

L

M

N

P

R

S

T

U

V

W

X

Y

Z

AA

AB

AC

AD

AE

AF

AG

AH

AI

AJ

AK

AL

AM

AN

AO

AP

AQ

AR

AS

AT

AU

AV

AW

AX

AY

AZ

BA

BB

BC

BD

BE

BF

BG

BH

BI

BJ

BK

BL

BM

BN

BO

BP

BQ

BR

BS

BT

BU

BV

BW

BX

BY

BZ

CA

CB

CC

CD

CE

CF

CG

CH

CI

CJ

CK

CL

CM

CN

CO

CP

CQ

CR

CS

CT

CU

CV

CW

CX

CY

CZ

DA

DB

DC

DD

DE

DF

DG

DH

DI

DJ

DK

DL

DM

DN

DO

DP

DQ

DR

DS

DT

DU

DV

DW

DX

DY

DZ

EA

EB

EC

ED

EE

EF

EG

EH

EI

EJ

EK

EL

EM

EN

EO

EP

EQ

ER

ES

ET

EU

EV

EW

EX

EY

EZ

FA

FB

FC

FD

FE

FF

FG

FH

FI

FJ

FK

FL

FM

FN

FO

FP

FQ

FR

FS

FT

FU

FV

FW

FX

FY

FZ

GA

GB

GC

GD

GE

GF

GG

GH

GI

GJ

GK

GL

GM