

? **IMPORTANT INFORMATION ?** **KEEP FOR OPERATOR ?** **IMPORTANT INFORMATION ?**

HY-3E STACKING KIT PART NO. 122200  
For Field Stacking HY-3E Convection Steamers

OM HY-3E(S)  
Supplement  
Part Number 121014



KEEP THIS SUPPLEMENT WITH THE HY-3E OPERATOR MANUAL. EVERY OPERATOR SHOULD READ, UNDERSTAND AND FOLLOW THE INSTRUCTIONS AND WARNINGS IN THIS SUPPLEMENT AND IN THE OPERATOR MANUAL.



Information contained in this document is known to be current and accurate at the time of printing/creation. Unified Brands recommends referencing our product line websites, [unifiedbrands.net](http://unifiedbrands.net), for the most updated product information and specifications.



## HY-3E STACKING KIT

### Contents

INTRODUCTION .....	3
PARTS LIST .....	3
STACKING HY-3E HYPERSTEAM INSTRUCTIONS .....	4

## Introduction

This Supplement describes the use of the Retrofit Kit to stack HY-3E HyPerSteam™ convection steamers, and offers a step-by-step guide. It provides stacking instructions under a variety of circumstances. Refer to the OM-HY-3E Installation Supplement (Part Number 121011) and OM-HY-3E (Part Number 121004) Operator Manual for installation and start-up instructions.

The Supplement applies if you purchased the stacking kit by itself (to stack steamers you already own), if you purchased a new steamer and kit to stack on one you already possess, or if you are adding to factory stacked units.

The following parts are provided in each HY-3E stacking kit.

## Parts List HY-3E Stacking Kit (Part Number 122200)

Part No.	Description	Qty	Part No.	Description	Qty
<b>Stacking Kit</b>					
122201	Weldment, Stacking Bracket	1	122214	Cover, Middle (Weldment)	1
122211	Bracket, "Z"	2	096797	Cover, Left Side	1
122212	Plate, Retention	2	096828	Clip, Mounting	1
<b>Overflow Drain Kit, Mounting Brkt</b>					
122207	Elbow, Male Threaded 3/8" NPT x 1/2" Barb	1	122206	Hose, Rubber (EPDM) 1/2" ID	1
122208	Tee, Male Threaded 3/8" NPT x 1/2" Barb	1	093482	Clamp, Hose	2
				Cable Tie	1
<b>Drain Kit, HY-3E</b>					
072159	1 1/2" Elbow	1	122205	Hose, Reinforced Silicone Rubber	1
118171	1 1/2" Tee	1	073259	Clamp, Hose	6
112953	Hose, Reinforced Silicone Rubber	2			
<b>Water Supply Kit - Dual Water</b>					
101189	Connector, Hose 2 Way	2	101183	3/4" Supply Hose	2
<b>Hardware and Miscellaneous</b>					
074244	Label, Warning	2	005764	8-32 Screw, Truss Head	1
005608	1/4-20 X .50 Screw, Hex Head	2		Stainless Steel	
	Cap Stainless Steel		012940	1/4-20 Nut w/ SEMS	2
005449	3/8-16 x .75 Screw, Hex Head	2	005618	3/8" Lockwasher	2
	Cap Stainless Steel		005692	1/4" Lockwasher	2
004173	10-32 Screw, Truss Head	2	122209	Silicone, Clear RTV 3oz. Tube	1
	Stainless Steel				

## HY-3E STACKING KIT

### I. Retrofit on Existing HY-3E Steamer

#### WARNING

THE UNIT(S) MUST BE MODIFIED OR INSTALLED BY PERSONNEL WHO ARE QUALIFIED TO WORK WITH ELECTRICITY AND PLUMBING. FAULTY MODIFICATION OR INSTALLATION CAN CAUSE INJURY TO PERSONNEL AND/OR DAMAGE TO THE EQUIPMENT. INSTALLATION MUST COMPLY WITH APPLICABLE CODES.

#### CAUTION

DISCONNECT ALL ELECTRICAL AND WATER SERVICE CONNECTIONS BEFORE WORKING ON STEAMER(S).

1. Disconnect existing (lower) steamer connections. Remove the two screws which hold the right side (facing the unit) panel. Remove the panel by sliding it toward the front of the unit. Unscrew the upper right mounting bracket which holds the top and the two screws at bottom of the left side panel. Remove the cover. (See Figure 1).



Figure 1 - Remove covers from existing (lower) unit.

2. Remove top and both side covers from the new unit (upper) to be installed. (See Figure 2)

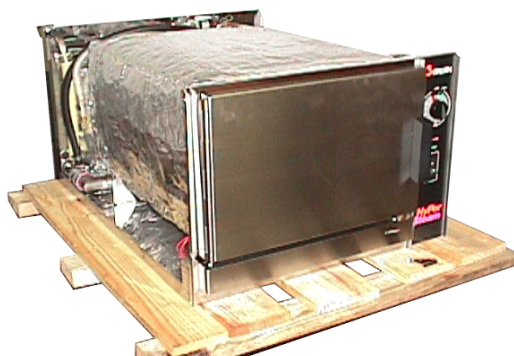


Figure 2 - Remove covers from new (upper) unit.

3. Attach the two provided mounting straps to the rear of the existing (lower) unit. Use the unit mounting screws. Mount the straps using their round holes. (See Figure 3).

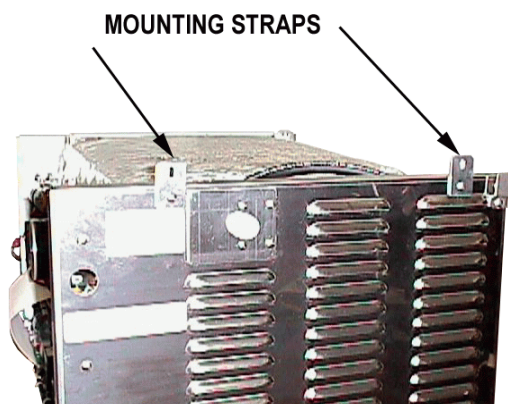
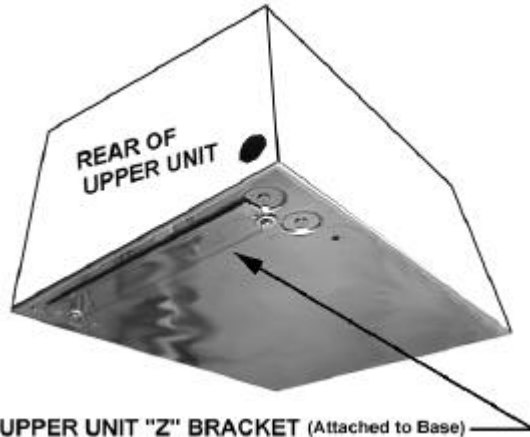


Figure 3 - Install straps on lower unit.

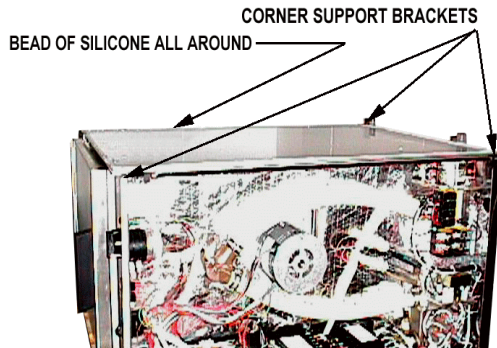
*If you purchased only the mounting kit, you must install a "Z" bracket on the bottom rear of the existing upper unit, using the provided  $\frac{3}{8}$ " fasteners. **Be sure to secure using  $\frac{3}{8}$ " clearance holes. Note the orientation.** (See Figure I-3a)*

## HY-3E STACKING KIT



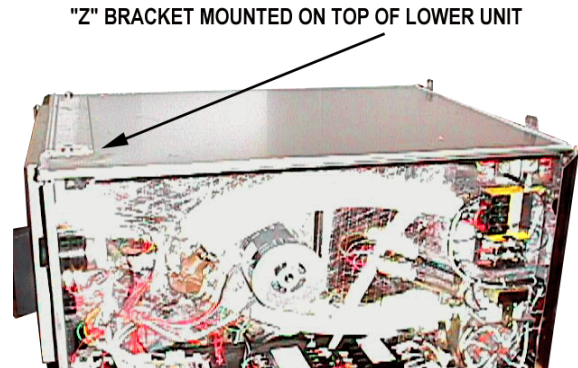
**Figure 3a -If you purchased only the mounting kit, you must install a “Z” bracket on the bottom rear of the existing upper unit.**

4. Install the top cover you just removed from the new (upper) unit on the existing (lower) unit, attaching it to the corner support brackets on each side. Apply a continuous  $\frac{1}{4}$ " bead of silicone sealant all around the top edge of the cover. (See Figure 4)



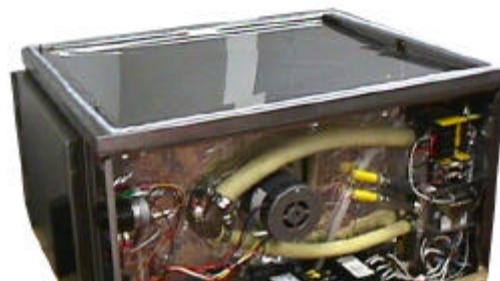
**Figure 4 - Install top cover from new unit on lower unit, attaching to corner support brackets.**

5. Working quickly to prevent the silicone from hardening, install the “Z” bracket to the top front of the lower unit. **Be sure to secure the bracket using the  $\frac{1}{4}$ " clearance holes on the top panel.** (Figure 5)



**Figure 5 - Install the Lower Unit “Z” Bracket.**

6. Install the inter-unit barrier bracket on the top of the lower unit. Lower the bracket with the front edge hanging over the top cover. Slide it toward the rear, engaging the “Z” bracket until the bracket contacts the straps on the back of the unit. Smooth the silicone beads around the edges. (See Figure 6)

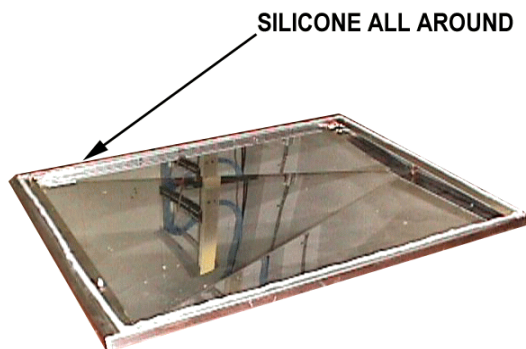


**Figure 6 - Install the inter-unit barrier bracket on top of the lower unit.**

7. **NOTE: If you purchased a new unit to be retrofitted into a stacked configuration, this step does not apply. If you have purchased only the mounting kit, apply a  $\frac{1}{4}$ " silicone bead around the perimeter. Apply the bead just in front of the studs, about one inch from the front edge.** (See Figure 7)



## HY-3E STACKING KIT



**Figure 7 - Apply silicone bead to inter-unit barrier.**

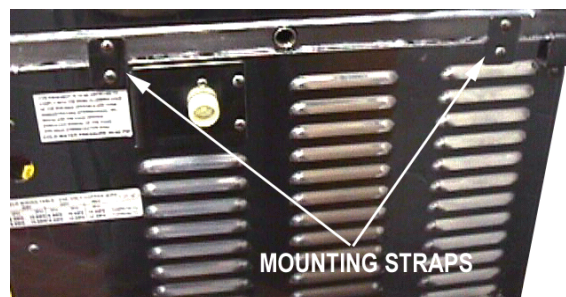
8. Install the upper unit onto the lower by engaging the "Z" bracket on the bottom rear of the upper unit. Carefully lower the front of the upper unit over the  $\frac{1}{4}$ " weld studs on the "Z" bracket, and center the upper unit on the lower one. (See Figure 8)

**WARNING**  
THE UNIT IS HEAVY — GET SOMEONE TO HELP, AND BE CAREFUL NOT TO PINCH YOUR FINGERS.



**Figure 8 - Install upper unit.**

9. Tighten the  $\frac{1}{4}$ " nuts provided, onto the weld studs, over which you lowered the upper unit by reaching in from the open sides of the unit. Smooth the silicone bead around all edges, and reinstall the right and left side panels on the lower unit. Reinstall the right side and left/cover cover panel on the top unit.
10. Secure mounting straps to the bracket with



**Figure 9 - Screw mounting straps to the inter-unit barrier bracket.**

#10-32 screws provided. (See Figure 9)

11. Screw the inter-unit drain fitting and hose to the inter-unit barrier bracket until it is hand-tight. As one of its functions, this bracket serves to protect lower unit(s) from damage which could occur if water were ever to leak from the upper units. (See Figure 10)

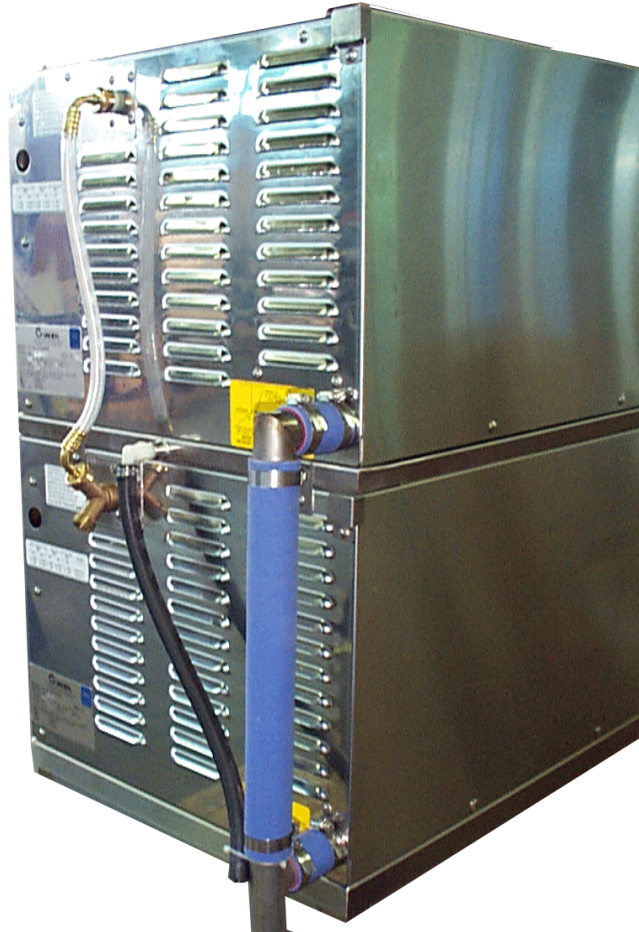


**Figure 10 - Install drain fitting on the inter-unit barrier bracket.**

**CAUTION**  
IF YOU SEE WATER DRIPPING FROM THE INTER-UNIT DRAIN, STOP USING THE UNIT AND CHECK HOSE CONNECTIONS. HAVE THE UPPER UNIT SERVICED. YOU MAY CONTINUE TO USE LOWER UNIT(S).

## HY-3E STACKING KIT

12. Screw the water supply “Y” connector(s) onto the lower unit(s) water intake. Run the provided hose from the “Y” fitting to the upper unit water intake(s). Install drain kit components as shown in Figure 11. (See *Figure 11*).
13. Connect the unit with proper electrical service and water supply, as described in the Operator Manual OM-HY-3E, Part No. 121004 and OM-HY-3E(S) Installation Supplement, Part Number .



**Figure 11 - Install Y connectors, water supply hoses and drain components.**



1055 Mendell Davis Drive  
Jackson, MS 39272  
Telephone 601 372-3903  
FAX 601 373-9587

OM HY-3E(S)  
Part Number 121014  
Issued 4/98