

SECTION 3. PARTS INFORMATION

3-1. INTRODUCTION

This section identifies and lists the replaceable parts of the Henny Penny SCD Rotisserie Merchandiser.

3-2. GENUINE PARTS

Use only genuine Henny Penny parts in your cabinet. Using a part of lesser quality or substitute design may result in cabinet damage or personal injury.

3-3. HOW TO ORDER

Once the part you want to order has been found in the Parts List, write down the following information:

1. From the Parts List
(Sample)
Item Number 3
Part Number 40645
Description Relay
2. From the data plate
(Sample)
Product Number SCD6.0
Serial Number AE001IH
Voltage 208V

3-4. PRICES

Your distributor has a price parts list and will be glad to inform you of the cost of your parts order.

3-5. DELIVERY

Commonly replaced items are stocked by your distributor and will be sent out when your order is received. Other parts will be ordered by your distributor from Henny Penny Corporation. Normally, these will be sent to your distributor within three working days.

3-6. WARRANTY

All replacement parts (except lamps and fuses) are covered under warranty for 90 days against manufacturing defects and workmanship. If damage occurs during shipping, notify the carrier at once so that a claim may be properly filed. Refer to warranty on the front of this section for other rights and limitations.

3-7. RECOMMENDED SPARE PARTS FOR DISTRIBUTORS

Recommended replacement parts, stocked by your distributor, are indicated with ✓ in the parts lists. Please use care when ordering recommended parts, because all voltages and variations are marked. Distributors should order parts based upon common voltages and equipment sold in their territory.

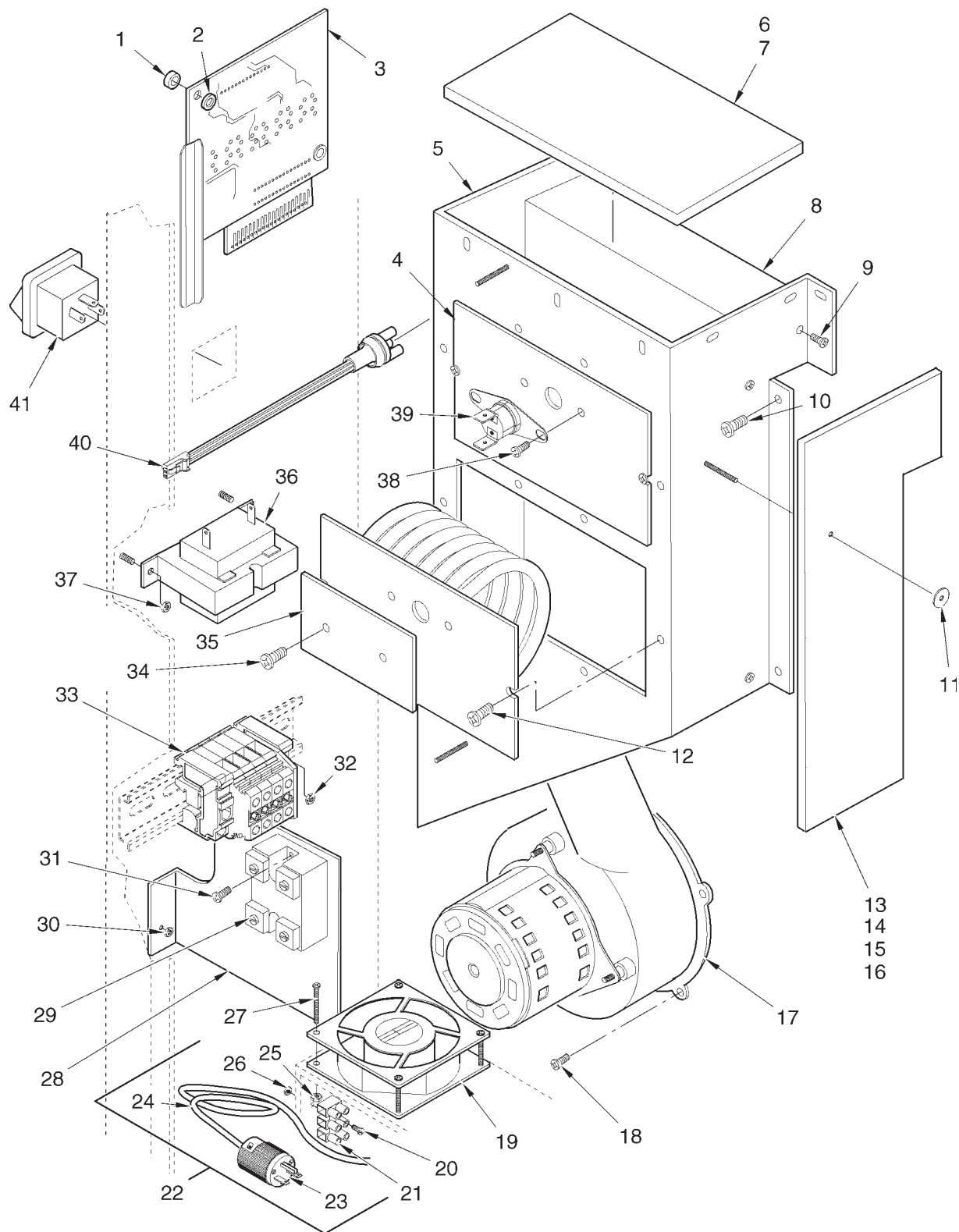


Figure 3-1. Electrical Controls

| FIG. & ITEM NO. | PART NO. | DESCRIPTION | SCD-8 | SCD-6 |
|--------------------|-------------|--|-------|-------|
| 3-1 | | ELECTRICAL CONTROLS | | |
| 1 | ME50-014 | SPACER | 4 | 4 |
| 2 | NS02-005 | NUT | 4 | 4 |
| √ 3 | 51101RB | CONTROL BOARD ASSEMBLY | 1 | 1 |
| √ 4 | 49214 | HEATER - 208V-1000W (UNDER INSUL.) | 2 | 2 |
| √ 4 | 49215 | HEATER - 240V-1000W (UNDER INSUL.) | 2 | 2 |
| 5 | 50614 | HEATER BOX | 1 | 1 |
| 6 | 49900 | INSULATION - HEATER BOX CAP | 1 | 1 |
| 7 | 49899 | INSULATION - HEATER BOX TOP | 2 | 2 |
| 8 | 49211 | BAFFLE - BLOWER | 1 | 1 |
| 9 | SC02-016 | SCREW | 9 | 9 |
| 10 | SC02-016 | SCREW | 7 | 7 |
| 11 | WA02-001 | WASHER | 7 | 7 |
| 12 | SC02-016 | SCREW | 6 | 6 |
| 13 | 49903 | INSULATION - HEATER BOX, RH | 1 | 1 |
| 14 | 49902 | INSULATION - HEATER BOX, LH | 1 | 1 |
| 15 | 49901 | INSULATION - HEATER BOX, BOTTOM | 1 | 1 |
| 16 | 49898 | INSULATION - HEATER BOX, FRONT | 1 | 1 |
| √ 17 | 39308 | BLOWER - HIGH TEMP. | 1 | 1 |
| 18 | SC01-124 | SCREW (#8-32 X 3/4 PH THD SS) | 4 | 4 |
| 19 | 37398 | COOLING FAN | 1 | 1 |
| 20 | SC01-058 | SCREW | 2 | 2 |
| 21 | ME50-021 | TERMINAL BLOCK | 1 | 1 |
| 22 | 49957 | POWER CORD ASSEMBLY | 1 | 1 |
| 23 | 36810 | . PLUG-15 AMP-250V | 1 | 1 |
| 24 | 49956 | . POWER CORD | | |
| 25 | NS02-005 | NUT | 4 | 4 |
| 26 | NS02-005 | NUT | 2 | 2 |
| 27 | SC01-037 | SCREW | 4 | 4 |
| 28 | 49949 | BRACKET, RELAY | 1 | 1 |
| √ 29 | 40645 | RELAY | 1 | 1 |
| 30 | NS02-005 | NUT | 2 | 2 |
| 31 | SC02-041 | SCREW | 2 | 2 |
| 32 | NS02-005 | NUT | 1 | 1 |
| 33 | 52994 | TERMINAL BLOCK ASSEMBLY | 1 | 1 |
| 34 | SC02-016 | SCREW | 2 | 2 |
| 35 | 43719 | HOLE COVER | 1 | 1 |
| √ 36 | 28979 | TRANSFORMER-PRI. 208/240V-SEC. 12V | 1 | 1 |
| 37 | NS02-005 | NUT | 2 | 2 |
| 38 | SC02-016 | SCREW | 2 | 2 |
| √ 39 | 18201 | HIGH LIMIT | 1 | 1 |
| √ 40 | 52100 | TEMPERATURE SENSOR ASSY (UNDER INSUL.) | 1 | 1 |
| √ 41 | 43768 | POWER SWITCH - 125-250V | 1 | 1 |

√ recommended parts

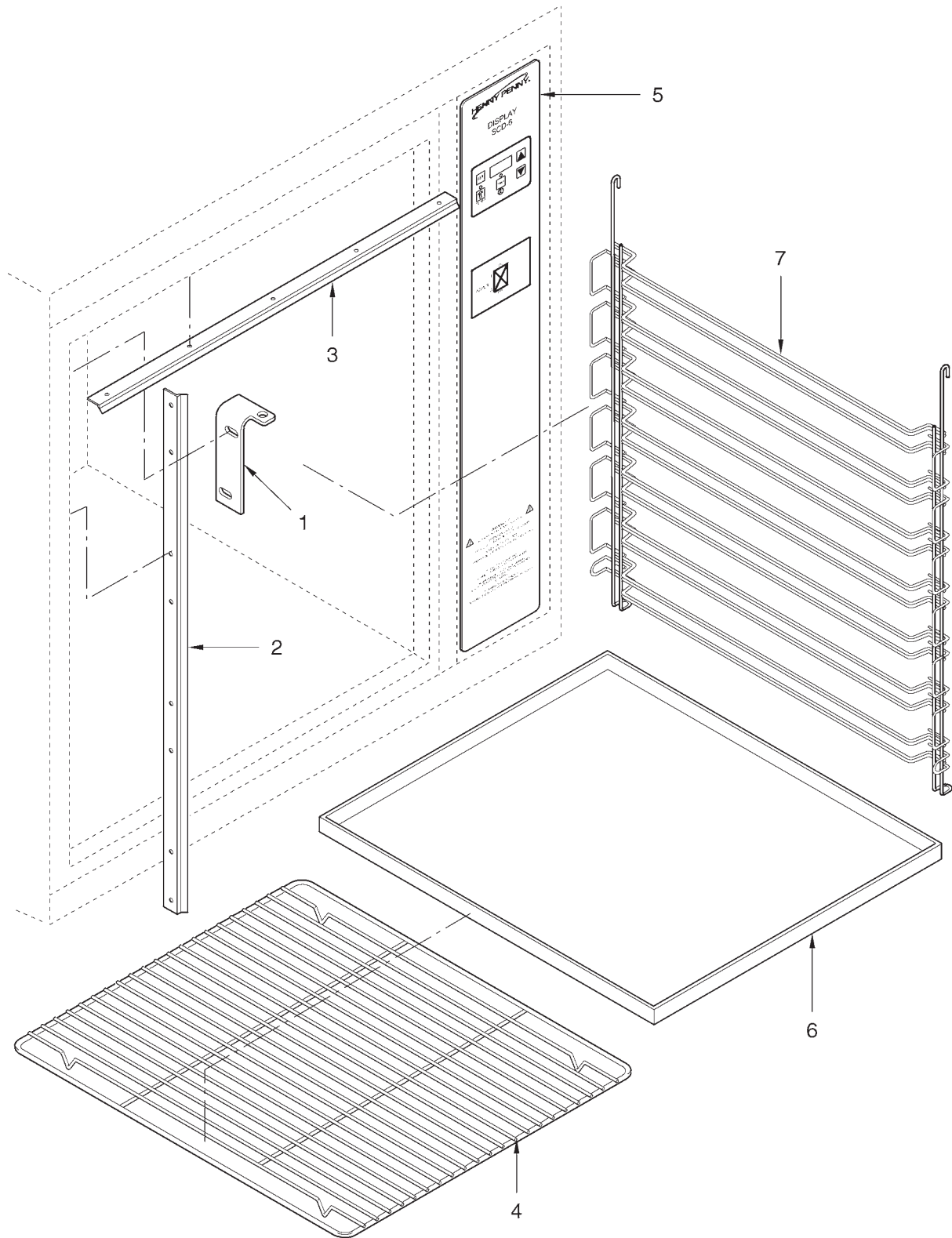


Figure 3-2. Drip Pan and Racks

| FIG. & ITEM NO. | PART NO. | DESCRIPTION | SCD-8 | SCD-6 |
|--------------------|-------------|---------------------------------------|-------|-------|
| 3-2 | | DRIP PAN AND RACKS | | |
| 1 | 48549 | HINGE - CONTROL SIDE | 1 | 1 |
| 1 | 48567 | HINGE - CUSTOMER SIDE | 1 | 1 |
| √ 2 | 49863 | DOOR GASKET - SIDE - SCD-8 | 2 | - |
| √ 2 | 49861 | DOOR GASKET - SIDE - SCD-6 | - | 2 |
| √ 3 | 49862 | DOOR GASKET - TOP - SCD-8 | 2 | - |
| √ 3 | 49860 | DOOR GASKET - TOP - SCD-6 | - | 2 |
| 4 | 40882 | SHELF - SCD-8 | 6 | - |
| 4 | 40871 | SHELF - SCD-6 | - | 6 |
| 5 | 49842 | DECAL - CONTROL PANEL - SCD-8 | 1 | - |
| 5 | 49841 | DECAL - CONTROL PANEL - SCD-6 | - | 1 |
| 5 | 61473 | DECAL - CONTROL PANEL - SCD-8 - POLLO | 1 | - |
| 6 | 40925 | DRIP PAN - SCD-8 | 1 | - |
| 6 | 40923 | DRIP PAN - SCD-6 | - | 1 |
| 7 | 49175 | SIDE RACK - SCD-8 | 2 | - |
| 7 | 49174 | SIDE RACK - SCD-6 | - | 2 |

√ recommended parts

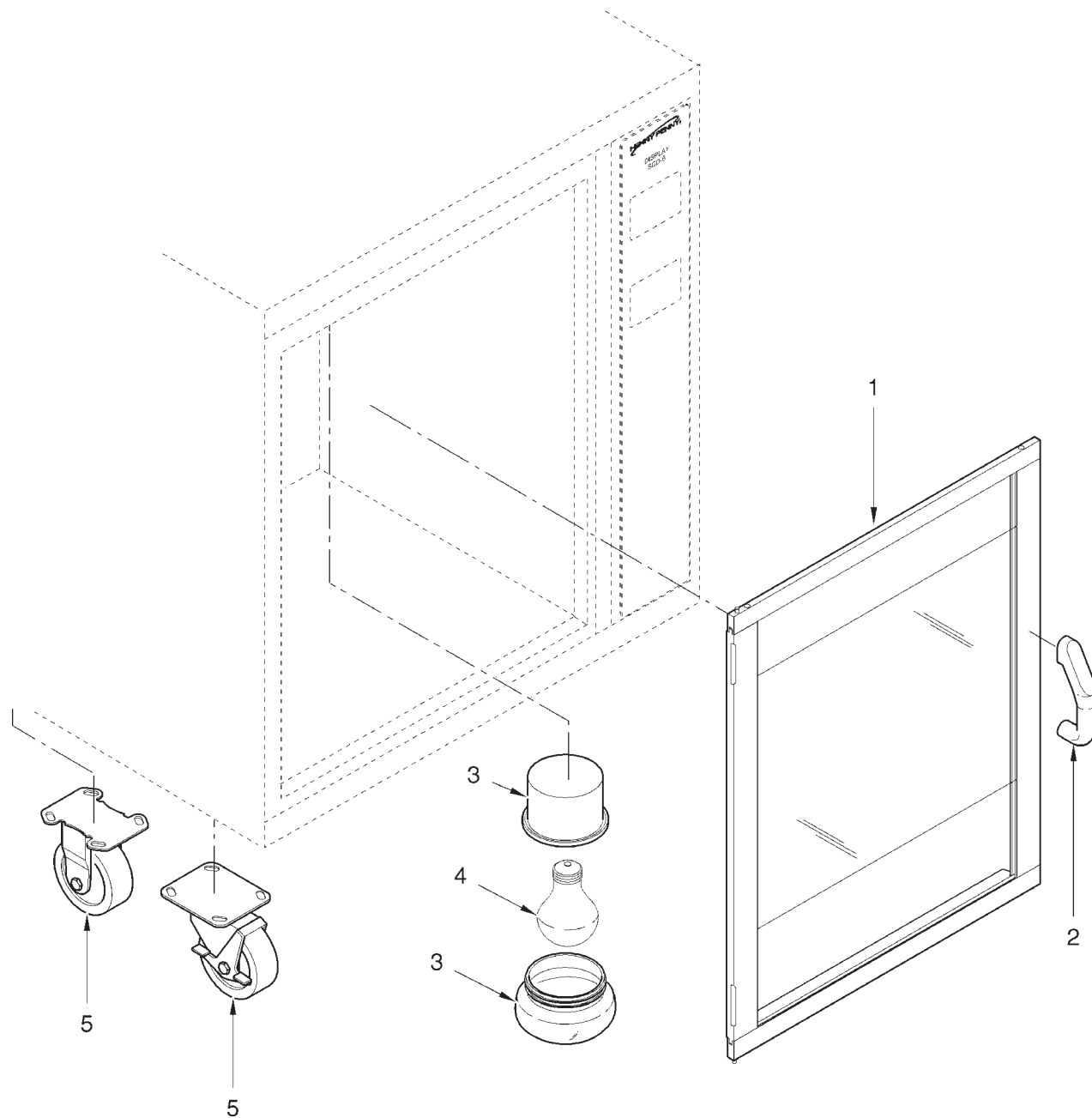


Figure 3-3. Door, Light, and Casters

| FIG. & ITEM NO. | PART NO. | DESCRIPTION | SCD-8 | SCD-6 |
|--------------------|-------------|--|--------|--------|
| 3-3 | | DOOR, LIGHT, AND CASTERS | | |
| 1 | 49751 | DOOR ASSY. - CONTROL - W/HANDLE | 1 | - |
| 1 | 49752 | DOOR ASSY. - CONTROL - MIR. - W/HANDLE | 1 | - |
| 1 | 49753 | DOOR ASSY. - CUST. - W/O HANDLE | 1 | - |
| 1 | 49754 | DOOR ASSY. - CUST. - W/HANDLE | 1 | - |
| 1 | 49755 | DOOR ASSY. - CUST. - MIR. - W/O HANDLE | 1 | - |
| 1 | 49756 | DOOR ASSY. - CUST. - MIR. - W/HANDLE | 1 | - |
| 1 | 49261 | DOOR ASSY. - CONTROL - W/HANDLE | - | 1 |
| 1 | 49262 | DOOR ASSY. - CONTROL - MIR. - W/HANDLE | - | 1 |
| 1 | 49263 | DOOR ASSY. - CUST. - W/O HANDLE | - | 1 |
| 1 | 49264 | DOOR ASSY. - CUST. - W/HANDLE | - | 1 |
| 1 | 49265 | DOOR ASSY. - CUST. - MIR. - W/O HANDLE | - | 1 |
| 1 | 49266 | DOOR ASSY. - CUST. - MIR. - W/HANDLE | - | 1 |
| 2 | 44757 | DOOR HANDLE | 1 OR 2 | 1 OR 2 |
| 3 | 51854 | LIGHT FIXTURE | 4 | 4 |
| ✓ 4 | BL01-014 | LIGHT BULB - 40 WATT | 4 | 4 |
| 5 | 40948 | CASTER 4 IN. - RIGID (REAR) | 2 | 2 |
| 5 | 40947 | CASTER 4 IN. - SWIVEL (FRONT) | 2 | 2 |
| 6 | 41365* | LEG ASSEMBLY (OPTIONAL) | 4 | 4 |

✓ recommended parts

* not shown