

Section 7 — PARTS INFORMATION

7-1. Introduction

This section lists the replaceable parts of the Henny Penny Sure Chef Rotisserie.

7-2. Genuine Parts

WARNING

Use only genuine Henny Penny parts in your unit. Using a part of lesser quality or substitute design may result in unit damage or personal injury.

Use only genuine Henny Penny parts in your unit. Using a part of lesser quality or substitute design may result in unit damage or personal injury.

7-3. How To Find Parts

To find items you want to order from the Parts List, proceed as follows:

1. Refer to the drawing in the Parts Section to identify the part needed.
2. Use the figure number and item number from the photograph to locate the corresponding part in Parts List of this section. There you will find the Henny Penny part number and a description of the part.

7-4. How To Order

Once the parts you want to order have been found in the Parts List, write down the following information:

1. From the drawing and Parts List (**SAMPLE**)

Figure Number	6
Part Number	30390
Description	Blade Fan

2. From the data plate (**SAMPLE**)

Product number	02601
Serial number	00155
Phase	3
Voltage	208

7-4. HOW TO ORDER
(Continued)

The following table has been provided as a sample format for you to use in preparing your spare parts orders. By providing all the entries, your distributor will be able to ensure the correct parts will be sent to you. Also, by prepayment your order will be expedited.

FROM PARTS LIST			YOUR ORDER		
Figure Number	Part Number	Description	Quantity Ordered	Price Each	Total
6	30390	Blade - Fan	1		
Product No. <u>02601</u>		Serial No. <u>00155</u>	Phase <u>3</u>	Voltage <u>208</u>	

7-5. PRICES

Your distributor has a period parts list and will be glad to inform you of the cost of your parts order.

7-6. DELIVERY

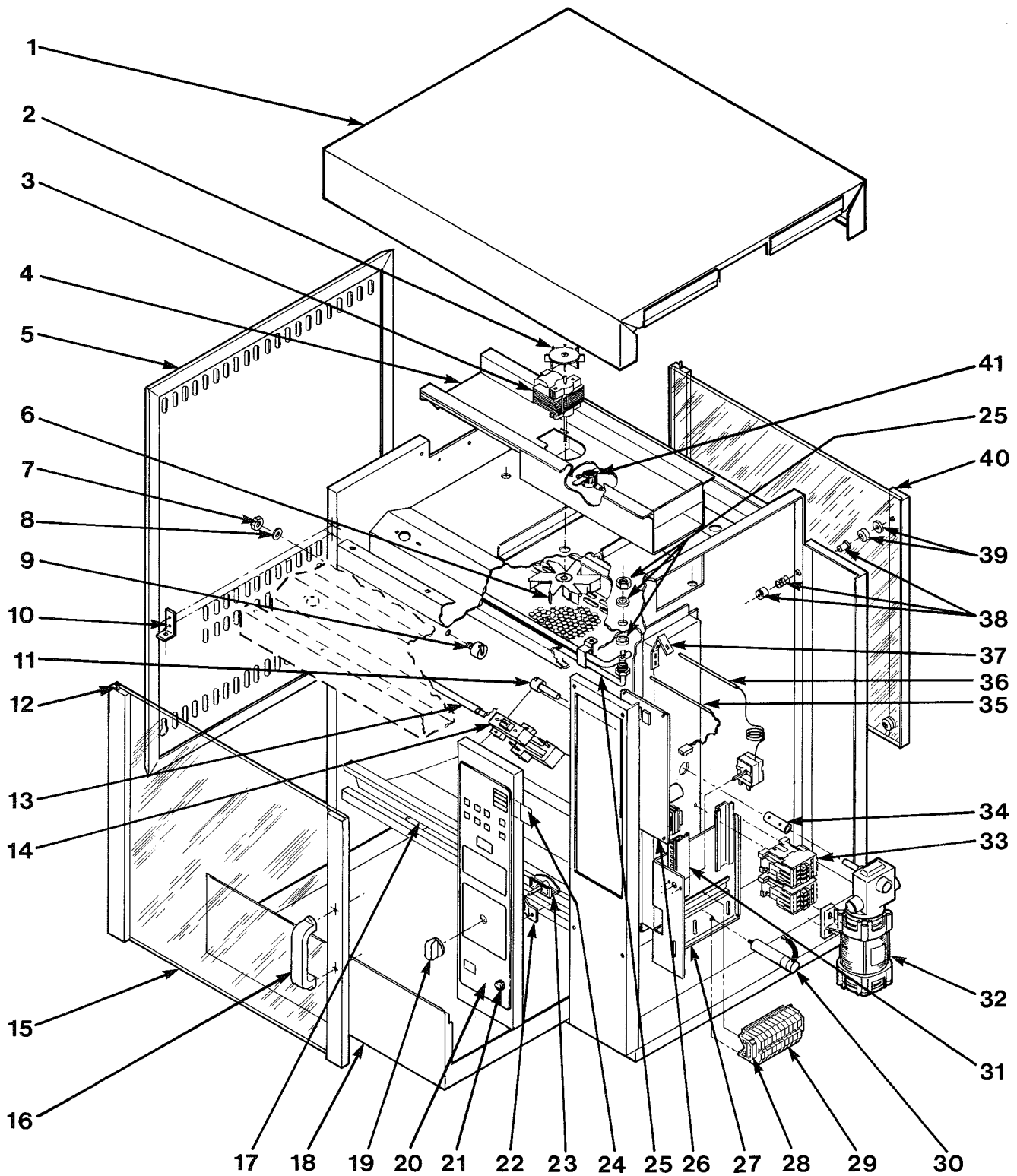
Commonly replaced items are stocked by your distributor and will be sent out when your order is received. Other parts will be ordered by your distributor from Henny Penny Corporation. Normally, these will be sent to your distributor within three working days.

7-7. WARRANTY

All replacement parts (except lamps and fuses) are warranted for 90 days against manufacturing defects and workmanship. If damage occurs during shipping, notify the sender and the carrier at once so that a claim may be properly filled. Refer to warranty in the front of this section for other rights and limitations.

7-8. RECOMMENDED
SPARE PARTS FOR
DISTRIBUTORS

Recommended replacement parts, stocked by your distributor, are indicated with √ in the parts lists. Please use care when ordering recommended parts, because all voltages and variations are marked. Distributors should order parts based upon common voltages and equipment sold in their territory.



Item No.	Part No.	Description	Quantity
1	26589	Top Cover RT-105	1
	26596	Top Cover RT-107 and 114	1
2	26672	Fan Blade - Cooling RT-105	1
	26673	Fan Blade - Cooling RT-107 and 114	1
√ 3	30416	Blower Motor 208-240 V - RT-105	1
√	26600	Blower Motor 208-240 V - RT-107 and 114	1
4	26675	Blower Housing - RT-105	1
	26676	Blower Housing - RT-107 and 114	1
5	26590	Side Panel Left - RT-105	1
	26591	Side Panel Right - RT-105	1
	26597	Side Panel Left or Right - RT-107 and 114	1
6	30390	Blade-Fan - RT-105	1
	26602	Blade-Fan - RT-107 and 114	1
7	26677	Nut - Spit Support	1
8	26678	Washer - Spit Support	1
9	26679	Support - Spit	1
10	30392	Hinge - Lower	1
	30393	Hinge - Upper	1
11	26680	Support - Spit - Drive	1
12	26681	Pivot Pin - Door	2
√ 13	26612	Heater Quartz 208 V 1000 W (All)	2
√	30387	Heater Quartz 240 V 1000 W (All)	2
14	30388	Quartz Heater Socket Assembly	4
15	26593	Rear Door Complete - RT-105	1
	26599	Rear Door Complete RT-107 and 114	1
16	30391	Door Handle	1
17	26587	Plate Drip Tray - RT-105	2
	26594	Plate Drip Tray - RT-107 and 114	2
18	26588	Drip Tray RT-105	1
	26595	Drip Tray RT-107 and 114	1
19	30384	Rotor Control Knob	1
√ 20	30375	Decal Switch	1
√ 21	30423	Reset Switch .4 Amp	1
22	30403	Reset Switch Mounting Bracket	1
√ 23	30382	Rotor Control Switch	1
24	26630	Menu Cards - Printed	1
	26631	Menu Cards - Blank	1
√ 25	26613	Radiant Heater Assembly RT-105 208 V 1600 W	1
√	26764	Radiant Heater Assembly RT-107 and 114 208 V 2000 W	4
√	30386	Radiant Heater Assembly RT-105 240 V 1600 W	1
√	26604	Radiant Heater Assembly RT-107 and 114 240 V 2000 W	4
√ 26	30430	Printed Circuit Board 208 V	1
√	30410	Printed Circuit Board 240 V	1
√	02640	Circuit Board Retrofit SN:HE015IJ and Below	1
27	26619	Wire Board Weld Assembly	1

Item No.	Part No.	Description	Quantity
28	26671	Terminal Block - End	2
29	26657	Terminal Block	1
√ 30	26682	Motor Capacitor	1
31	26683	Wire Enclosure Cover	1
√ 32	30394	Drive Motor	1
√ 33	30383	Contactor	2
34	26684	Coupler - Drive	1
√ 35	26249	Probe Assembly	1
√ 36	30378	Thermostat	1
37	26561	Clip - Spring	1
38	26685	Cabinet Magnet Assembly	4
39	26686	Door Magnet Assembly	4
40	26592	Door Front Complete RT-105 and 110	2
	26598	Door Front Complete RT-107 and 114	2
√ 41	30424	Hi Limit Thermostat 248 °F/120 °C	1
√ *	26687	Fan Control Switch RT-107 and 114 only (Not Shown)	1
	18645	Casters - RT-114 (Not Shown)	2
	18646	Caster w/Brake - RT-114 (Not Shown)	2
	26754	Disc Hub - Drive Side (Not Shown)	1
	26756	Disc Hub - Support Side (Not Shown)	1