

Jackson Avenger® LT

Project _____
 Item _____
 Quantity _____
 CSI Section 11400 _____
 Approval _____
 Date _____

Avenger® LT

Models

Avenger® LT



Standard Features

- Automatic fill
- Push button start
- Labyrinth type door design
- Automatic pumped drain for floor and wall drain installations
- Recirculating wash and rinse
- Stainless steel wash/rinse pump
- Electromechanical components
- Manual override for extended wash and deliming
- Simplified controls allow easy access for operation and service
- Door safety switch
- Low product indicator light
- One (1) each peg and combination rack included
- Above water scrap basket
- Three built-in chemical pumps for detergent, rinse aid and sanitizer

Options

- ☐ Scale Prevention System (SPS)
- ☐ Replacement cartridges for SPS (2-pack)
- ☐ Water Hammer Arrestor
- ☐ Back Panel
- ☐ Tie Down

Accessories

- ☐ 36-Compartment Rack
 - ☐ 4-1/8" tall (105 mm)
 - ☐ 5-5/8" tall (143 mm)
 - ☐ 7" tall (178 mm)
- ☐ Combination Rack
- ☐ Peg Rack
- ☐ Machine Stand
 - ☐ 6" (152 mm) high
 - ☐ 18" (457 mm) high

Specifications

Uses 1.2 gallons (4.5 liters) of water per rack
 Uses 28.8 gallons (109 liters) of water per hour
 Cleans 24 racks per hour
 Two-minute automatic cycle
 Powerful 3/4 hp wash pump motor
 Air insulated between body and stainless steel housing
 304 stainless steel construction
 Low product indicator light alerts operator when detergent and sanitizer are low

Notes:

A vent hood is not recommended above the Jackson Avenger® LT as it does not produce excessive vapors. *Always check with the local building code to know what type of ventilation is required for commercial dish machine installations in your area.*

Normal operation of the Avenger LT® generates steam that may escape from the door. Materials such as wood laminate, veneers, etc. are unsuitable for use in areas exposed to dishwasher steam and detergents. Stainless steel or other moisture-resistant shields are recommended for surfaces adjacent to Avenger LT® sides and top.



Intertek



SHIPPING ADDRESS

6209 North U.S. Highway 25E
 Gray, KY 40734

MAILING ADDRESS

P.O. Box 1060
 Barbourville, KY 40906

Tel: 1-888-800-5672

Fax: 606-523-1799

info@jacksonmsc.com

www.jacksonmsc.com



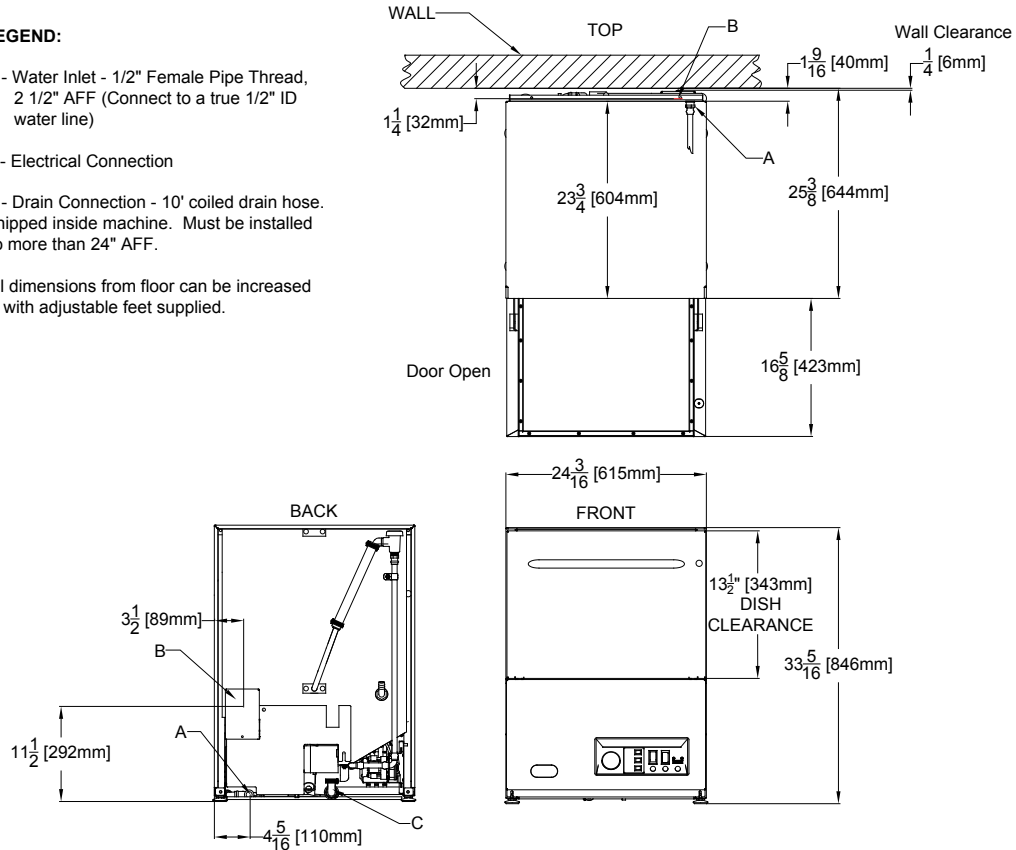
LEGEND:

A - Water Inlet - 1/2" Female Pipe Thread,
2 1/2" AFF (Connect to a true 1/2" ID
water line)

B - Electrical Connection

C - Drain Connection - 10' coiled drain hose.
Shipped inside machine. Must be installed
no more than 24" AFF.

All dimensions from floor can be increased
1" with adjustable feet supplied.



MODEL NO.	MACHINE DIMENSIONS				WALL CLEARANCE	SHIPPING INFORMATION					
	INSIDE CLEARANCE HEIGHT	INSIDE CLEARANCE WIDTH	INSIDE CLEARANCE DEPTH	DOOR OPEN DEPTH		WEIGHT	CLASS	CUBE	HEIGHT	WIDTH	DEPTH
Avenger® LT	13-1/2" (343 mm)	20" (508 mm)	20" (508 mm)	42" (1067 mm)	1/4" (6 mm)	248 lbs (112 kg)	92.5	23.3 cu. ft.	42" (1067 mm)	33" (838 mm)	29" (737 mm)

APPROXIMATE TOTAL LOAD AMPS	
115/60/1	13.2

ELECTRICAL REQUIREMENTS	
Wash pump	3/4 hp

WATER REQUIREMENTS	
Gallons per rack	1.2 gal (4.5 L)
Gallons per hour	28.8 gal (109 L)
Flow pressure (PSI)	15 - 25
Waterline size (IPS)	1/2"
Drainline size (OD)	1-3/8"

OPERATING CAPACITY	
Racks per hour	24
Dishes per hour	600
Glasses per hour	864

OPERATING CYCLE	
Wash cycle (seconds)	56
Drain time (seconds)	29
Rinse time (seconds)	35
Total cycle (seconds)	120

OPERATING TEMPERATURES	
Wash	140°F (60°C)
Rinse	140°F (60°C)

HOW TO SPECIFY: Avenger® LT

SHIPPING ADDRESS
6209 North U.S. Highway 25E
Gray, KY 40734

MAILING ADDRESS
P.O. Box 1060
Barbourville, KY 40906

Tel: 1-888-800-5672
Fax: 606-523-1799
info@jacksonmsc.com

www.jacksonmsc.com
07610-003-34-04 (02/13/12)

