



737



737 INSTALLATION

This dishwasher must be installed on a level, rigid, nonflammable surface. Ensure that the machine is level by installing the feet (shipped in the wash tank of the machine) and adjusting the leveling. Be sure to provide adequate space for water, drain and electrical connections.

WATERSUPPLY

A 1/2" -140°F (60°C) hot water line with 30 PSI flow pressure and shut-off valve is required. A pressure reducing valve* may be required. A 1/2" flexible supply hose* is recommended from the shut-off valve to the water fill valve on the dishwasher to facilitate maintenance and servicing of the machine. A 90° elbow adapter for the water inlet valve is furnished with the machine and can be found in the wash tank with the adjustable feet. There should be sufficient hose length to permit the machine to be pulled out for service.

DRAIN

This dishwasher is equipped with an automatic drain pump that will pump the drain water to a maximum height of 40" (1 meter). A 1" ID flexible drain hose* is recommended to facilitate maintenance and servicing of the machine. It is important not to reduce the size of this hose. A 1" check-valve* may be required for some applications. Drain pump equipped machines have a white button on the control panel beside the green power button. There should be sufficient hose length to permit the machine to be pulled out for service.

ELECTRICAL



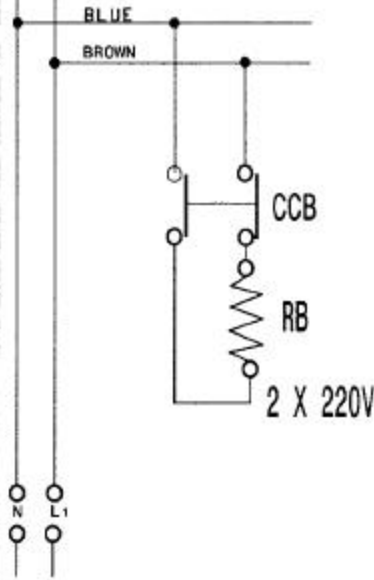
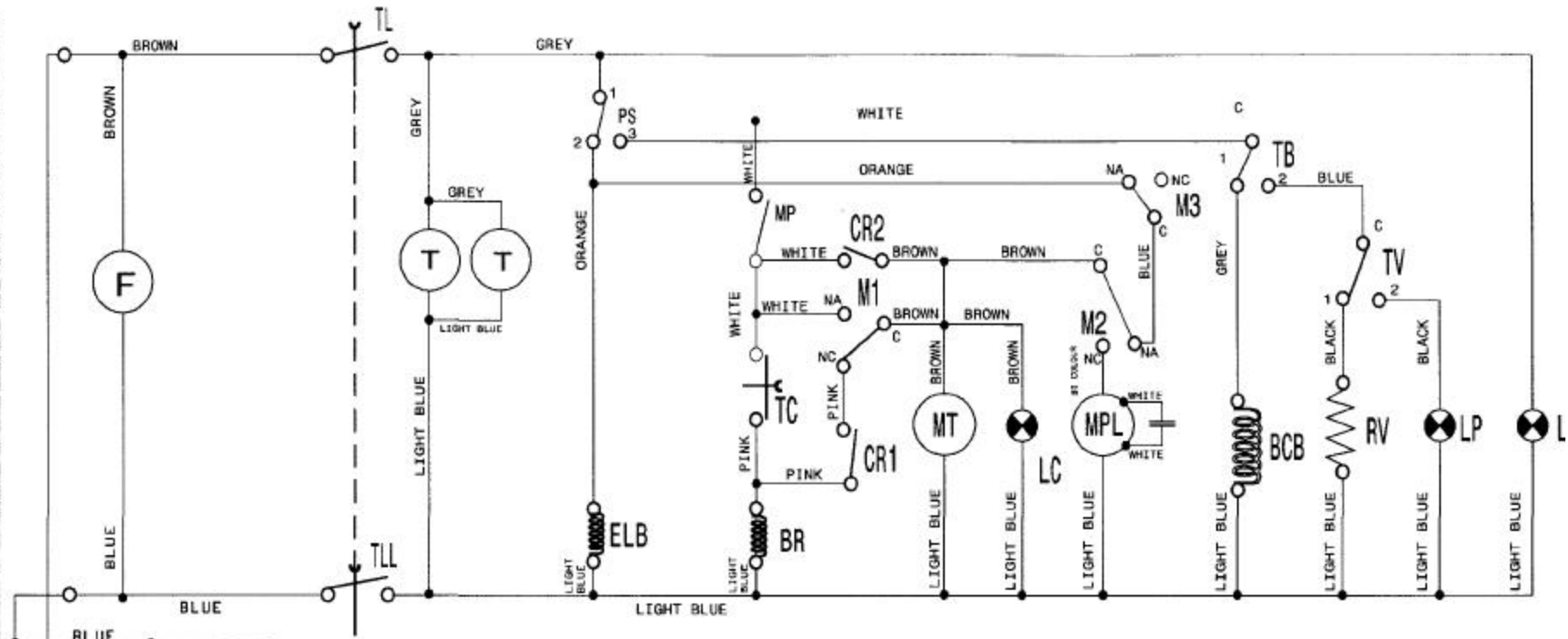
A 208-240 volt, 60 Hz, Single Phase circuit is required for this unit. Check the rating plate on the machine for amp draw. In spite of the fact that the rating plate shows 208 volts, the unit is designed function properly on 208 volts to 240 volts. The top & back panels must be removed for the electrical hook-up. The terminal block is located inside the back cover. Pass the cable through the cable strain relief and connect the wires to the terminals L1 (brown wire), L2 (blue wire) & Ground (yellow & green wire). Replace the top & back panels being careful not to pinch or kink any wires or hoses. There should be sufficient cable length to permit the machine to be pulled out for service. **DO NOT TURN ON THE POWER TO THE MACHINE UNTIL THE WATER SUPPLY & DRAIN LINES HAVE BEEN CONNECTED**

IMPORTANT NOTE

Reasonable access to and around the machine for service must be provided. Disconnecting of hard plumbing or removal of counter tops or cabinets, etc., for servicing is not covered by warranty.

* - not supplied

737 ELECTRICAL DIAGRAM



TIMER PROGRAM

	0	6-7°	123°
M1	NA		
	NC		
		102°	
M2	NA		
	NC		
		105°	
M3	NA		
	NC		

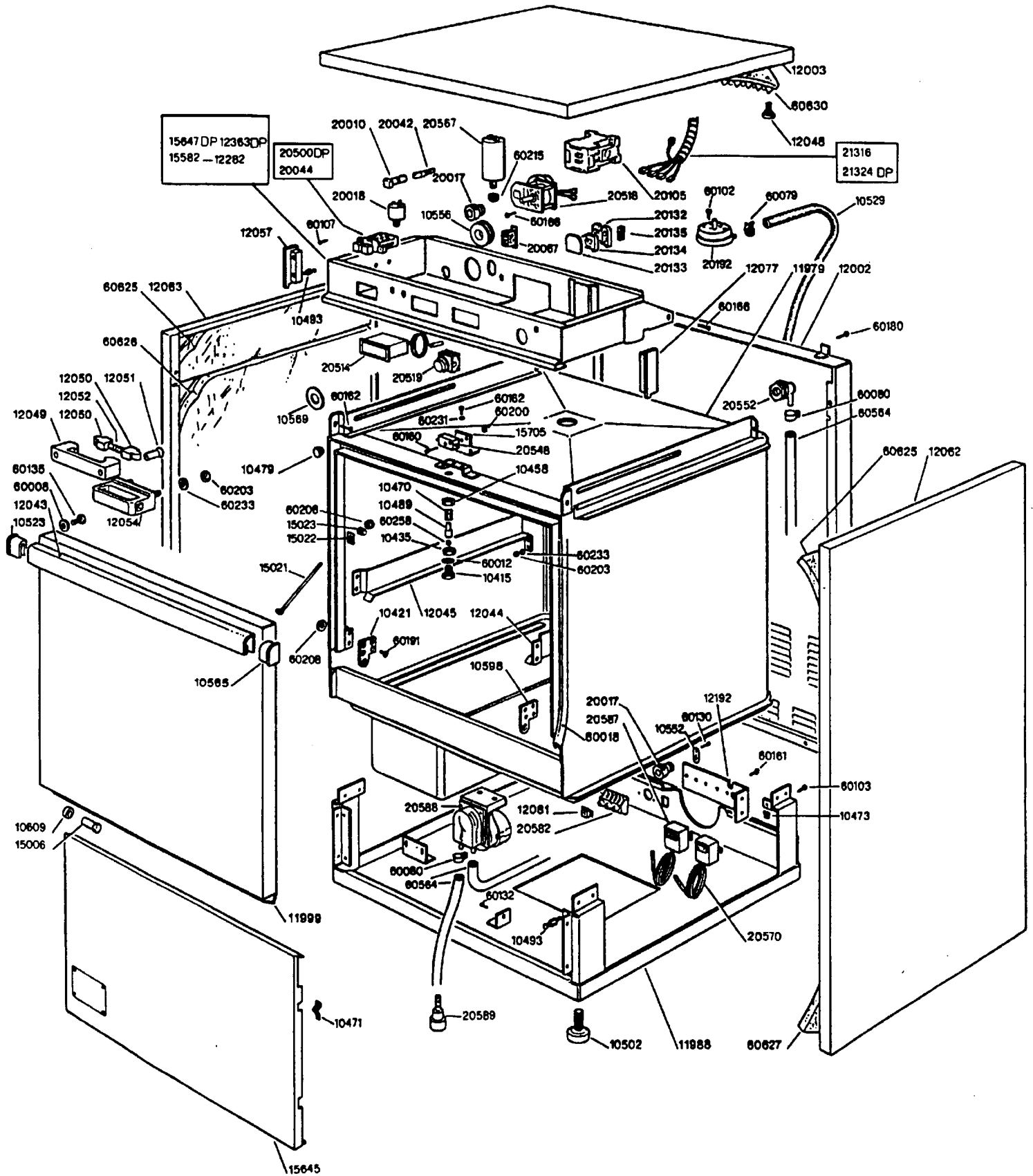
LEGEND

- | | | | |
|-------|-------------------|-----|----------------------------|
| F | AUDIO FILTER | BCB | BOOSTER CONTACTOR COIL |
| MPS | DRAIN PUMP | TV | TANK THERMOSTAT |
| TL | POWER SWITCH | RV | TANK ELEMENT |
| PS | PRESSOSTAT | LP | PILOT LIGHT READY MACHINE |
| ELB | SOLENOID VALVE | LL | PI LOT LIGHT POWER |
| TC | CYCLE SWITCH | CCB | BOOSTER CONTACTOR CONTACTS |
| BR | MICRO RELAY COIL | RB | BOOSTER ELEMENT |
| CR1-2 | MICRO RELAY | | |
| T | DIGITAL | | |
| MPL | WASH PUMP | | |
| MP | DOOR SWITCH | | |
| MT | TIMER MOTOR | | |
| M1 | MICRO SWITCH | | |
| M2 | MICRO SWITCH | | |
| M3 | MICRO SWITCH | | |
| LC | PILOT LIGHT CYCLE | | |

JE T-TECH
 701 COTE DE LIESSE, MONTREAL QUE. H4T 1E7
 ELECTRICAL SCHEMATICS 737

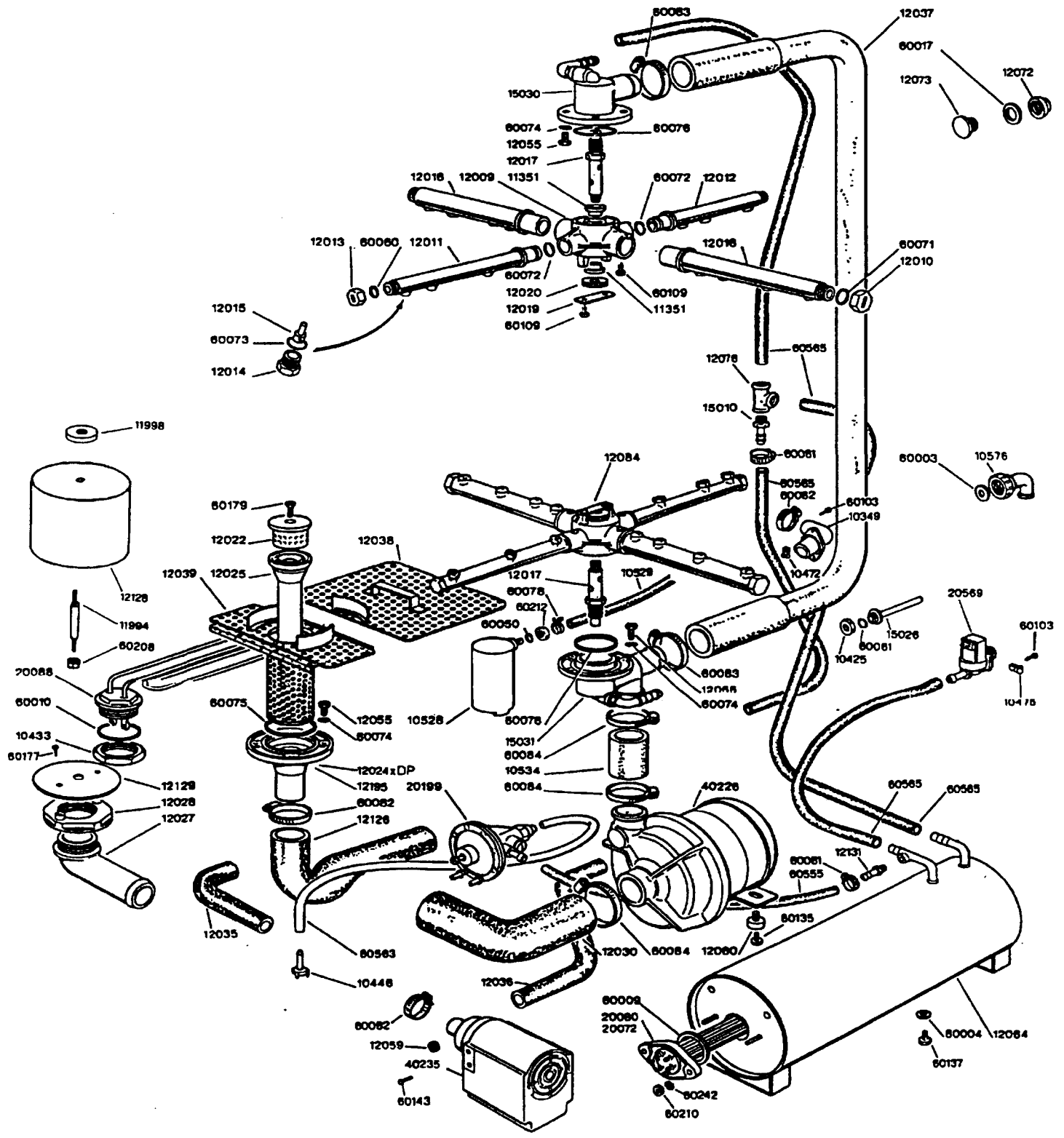
AUG. 10. 1998

JET-TECH 737



737DP EXPLODED VIEW

JET-TECH 737



737 PARTS LIST

10349	CONNECTOR	12035	TUBE
10415	NUT	12036	TUBE
10421	SMALL SQUARE	12037	TUBE
10425	NUT	12038	FILTER
10433	NUT	12039	FILTER
10435	NUT	12043	HANDLE
10446	RINSE AID FILTER	12044	RIGHT BASKET GUIDE
10458	NUT	12045	LEFT BASKET GUIDE
10470	SPRING	12048	PIVOT
10471	SPRING	12049	DOOR HOOK
10472	SPRING	12050	DOOR CATCH
10473	SPRING	12051	SCREW
10475	SPRING	12052	SPRING
10479	BUFFER	12054	DOOR CATCH BODY
10489	PIVOT	12055	SCREW
10493	PIVOT	12057	HANDLE SOCKET
10502	ADJUSTABLE FOOT	12060	ANTI-VIBRATION
10523	SOCKET	12062	RIGHT SIDE
10528	AIR TRAP	12063	LEFTSIDE
10529	TUBE	12064	BOOSTER TANK
10534	TUBE	12072	NUT
10552	PLATE	12073	PLUG
10556	FAIR LEAD	12076	MANIFOLD
10565	HANDLE SOCKET	12077	HANDLE SOCKET
10569	DISK	12081	NUT
10576	NUT + RUBBER -- CARRIER SOLENOID V.	12084	WASH/RINSE ARM
10598	SQUARE	12128	FILTER
10609	SPACER	12129	DISK
11351	BUSHING	12131	RUBBER-CARRIER
11979	WASH TANK	12192	SQUARE
11988	BASE	12363	FILM JET-TECH 737 DP
11994	ROD	15006	PIVOT
11998	NUT	15021	TENSION ROD
11999	DOOR	15022	TENSION ROD GUIDE
12002	BACK PANEL	15023	TENSION ROD BLOCK
12003	TOP PANEL	15026	CONNECTOR DIAMETER 7,5
12007	SUPPORT	15030	KIT SUPERIOR SUPPORT ARM
12008	SUPPORT	15031	KIT INFERIOR SUPPORT ARM
12009	HUB	15645	PANEL JET-TECH 737
12010	PLUG	15647	PANEL WITH THERMOMETER
12011	RINSE ARM	15705	SQUARE MICROSWITCH
12012	RINSE ARM	20010	LENS
12013	PLUG	20017	FIXING CABLE
12014	RINSE JET	20018	FILTER
12015	RINSE JET INSERT	20042	LIGHT
12016	WASH ARM	20067	RELAY 12A 230V
12017	PIVOT	20080	BOOSTER ELEMENT 400V 6000W
12019	PLATE	20088	WASH TANK ELEMENT 230V 2800W
12020	NUT	20105	CONTACTOR 220/240V 50/60Hz
12021	CONNECTOR	20119	THERMOSTAT
12022	LID WITH FILTER	20132	TERMINAL
12024	CONNECTOR	20133	PLATE 249-116
12025	TUBE	20134	TERMINAL 281-313
12027	CONNECTOR	20135	STAPLE
12028	NUT	20192	PRESSURE SWITCH
12030	TUBE	20199	RINSE AID PUMP

20500	POWER SWITCH	60200	NUT
20514	DIG ITAL TEMP. DISPLAY	60201	NUT
20518	TIMER 3'22" 60HZ	60202	NUT
20519	CYCLE START BUTTON	60203	NUT
20532	TERMINAL BLOCK 400V	60204	NUT
20548	DOOR MICROSWITCH UL F 18	60208	NUT
20567	CAPACITOR 16MF 240UL	60210	NUT
20569	SOLENOID VALVE 1A 240V 60Hz UL	60212	NUT
20570	WASH THERMOSTAT	60215	NUT
20582	TERMINAL FV 110	60230	WASHER
21324	WIRING HARNESS 737 DP	60231	WASHER
30049	PEG RACK 20X20	60232	WASHER
30105	OPEN RACK 20X20	60233	WASHER
40226	MOTOR PUMP	60234	WASHER
40235	DRAIN PUMP 60HZ	60235	WASHER
60003	GASKET	60242	WASHER
60004	GASKET 15x10x2	60244	WASHER
60008	GASKET	60258	BALL
60009	GASKET	60555	HOSE
60010	O RING	60563	HOSE
60012	GASKET	60565	HOSE
60017	GASKET	60625	PANEL
60018	GASKET	60626	PANEL
60050	O RING	60627	PANEL
60060	O RING	60630	PANEL
60061	O RING		
60071	O RING		
60072	O RING		
60073	O RING		
60074	O RING		
60075	O RING		
60076	O RING		
60078	CLAMP		
60079	CLAMP		
60081	CLIP		
60082	CLIP		
60083	CLIP		
60084	CLIP		
60102	SCREW		
60103	SCREW		
60107	SCREW		
60109	SCREW		
60130	SCREW		
60132	SCREW		
60135	SCREW		
60137	SCREW		
60143	SCREW		
60160	SCREW		
60161	SCREW		
60162	SCREW		
60164	SCREW		
60166	SCREW		
60177	SCREW		
60179	SCREW		
60180	SCREW		
60191	SCREW		