

SERVICE INSTRUCTIONS

www.keatingofchicago.com

KEATING
OF CHICAGO, INC.®

1-800-KEATING

CALIBRATION MIRACLEAN® 2000 GAS GRIDDLE

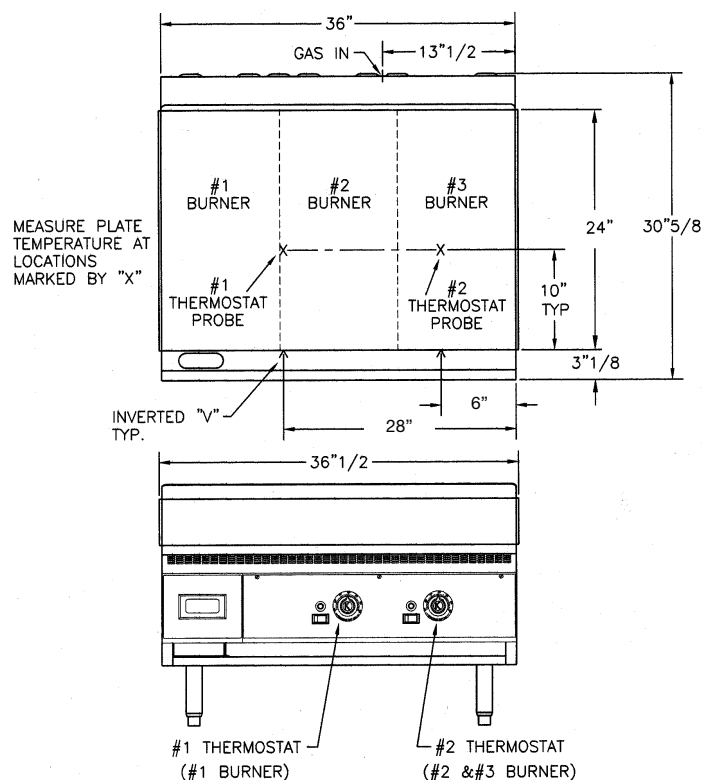
Bob Evans
FARMS®

THERMOSTAT CALIBRATION

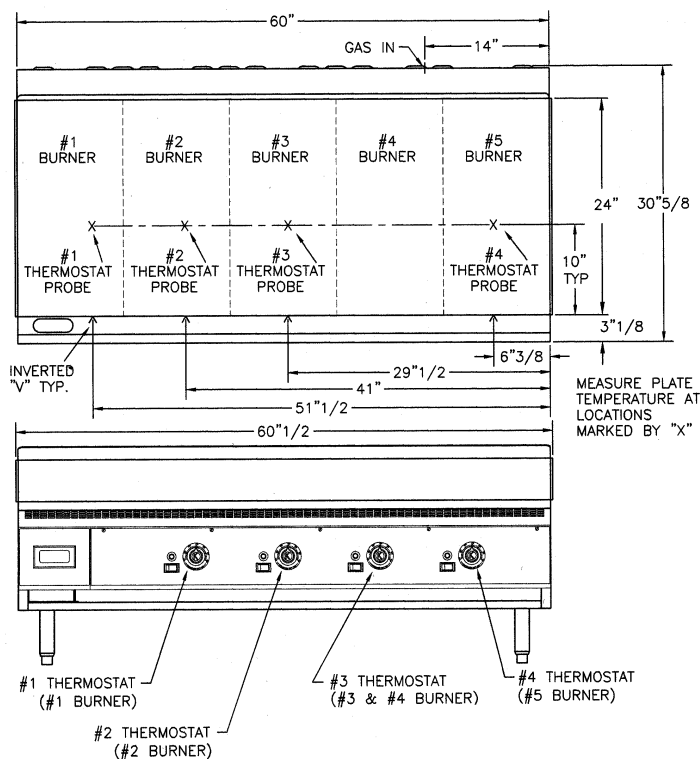
Calibration is not covered under warranty.

Tools: Accurate surface thermometer, Standard screwdriver

1. Turn the exhaust system ON.
2. Turn on the griddle with thermostat set at 300°F. Allow burners to cycle on and off three times. (Approximately 60 minutes.)
3. Place accurate thermometer on surface over thermostat bulb. Use the inverted "V" on the front of the griddle plate to locate thermostat bulb. Place the surface thermometer about half way toward the back of the plate.

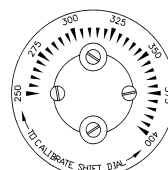


NOTE: ALL DIMENSIONS ARE ±1/8" UNLESS OTHERWISE SPECIFIED.



NOTE: ALL DIMENSIONS ARE ±1/8" UNLESS OTHERWISE SPECIFIED.

4. When burners cycle off, the griddle is up to temperature. If the temperature is ±5°F, do not adjust. If temperature is within 25°F of thermostat setting, remove knob. Loosen four screws in the thermostat dial plate. Replace knob. Reset the dial plate to match the thermometer reading.
 5. Remove the knob to tighten screws on dial plate and replace the knob.
- For calibration over a 25°F difference, contact a qualified service company.



Thermostat calibration
Thermostat knob
removed to reveal
calibration screws.