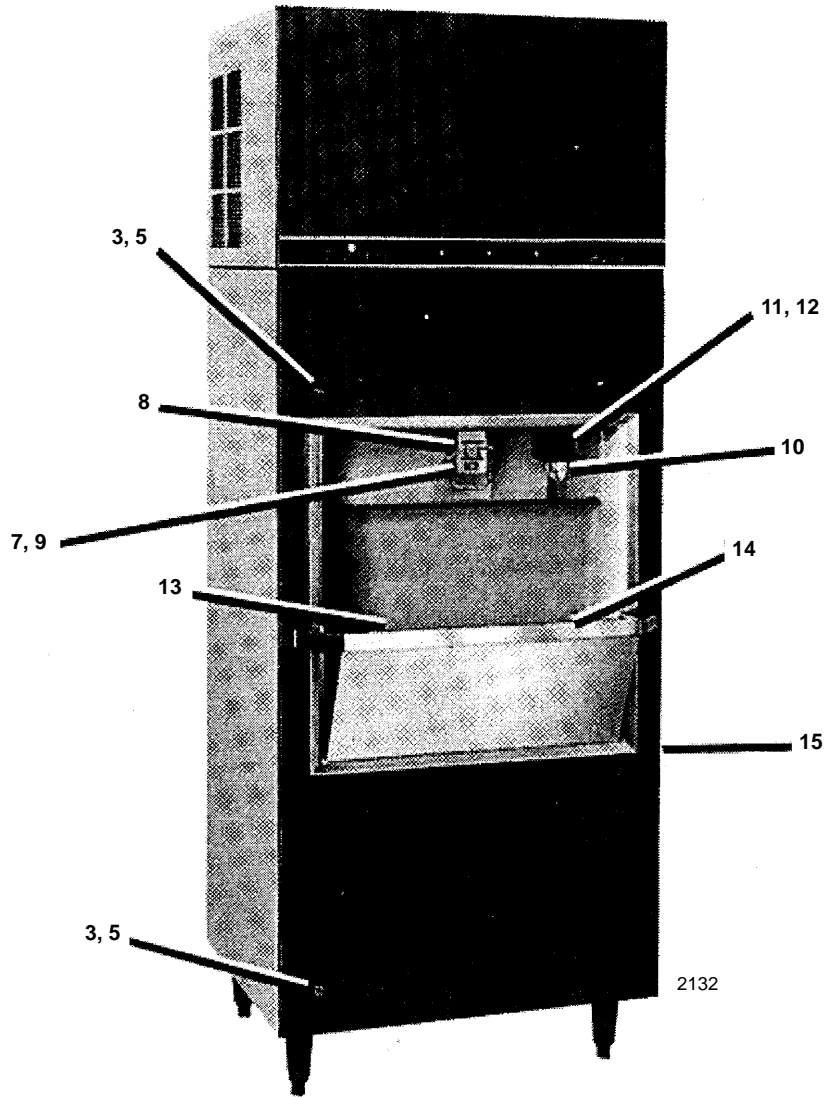




**Ice Machine Parts List for
Series FTA-290, FSA-291 Models**

FTA-290, FSA-291

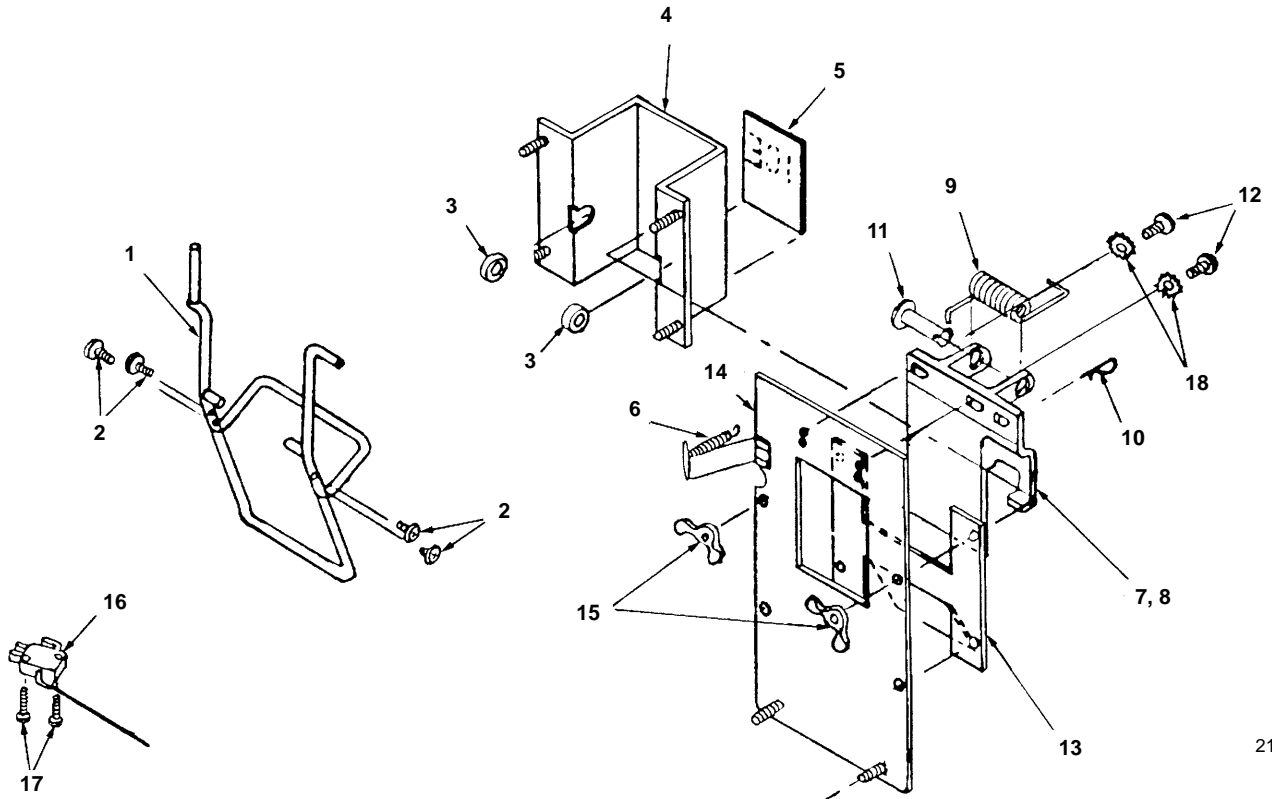


DESCRIPTION

| | PART NO. |
|---|-----------------|
| 1 Main Door Assembly – Textured Fawn | † 76-2352-3 |
| 2 Main Door Assembly – Stainless Steel | † 76-2354-3 |
| 3 Lock Assembly – Up to SN 890762559 (Must Identify): | |
| 3a Tube Key Type Lock | † 30-6026-3 |
| 3b Flat Key Type Lock | 30-6027-3 |
| 4 Key Only – Up to SN 890762559 | 76-2379-3 |
| 5 Lock Assembly – Use after SN 890762560 | 30-6027-3 |
| 6 Key for Lock 30-6027-3 | 30-6028-3 |
| 7 Ice Chute w/Label | 76-2348-3 |
| 8 Label “ICE” | 81-3211-3 |
| 9 Actuating Arm | † 76-2381-3 |
| 10 Water Dispensing Valve | † 202-FN-1101 |
| 11 Cover – Water Valve | 83-7602-3 |
| 12 Label “WATER” | 81-3105-3 |
| 13 Wire Grill | 34-0635-3 |
| 14 Grill Support | 687601-4 |
| 15 Hinge | 30-1011-3 |

† Refer to Cross Reference Guide

FTA-290, FSA-291, CONTINUED



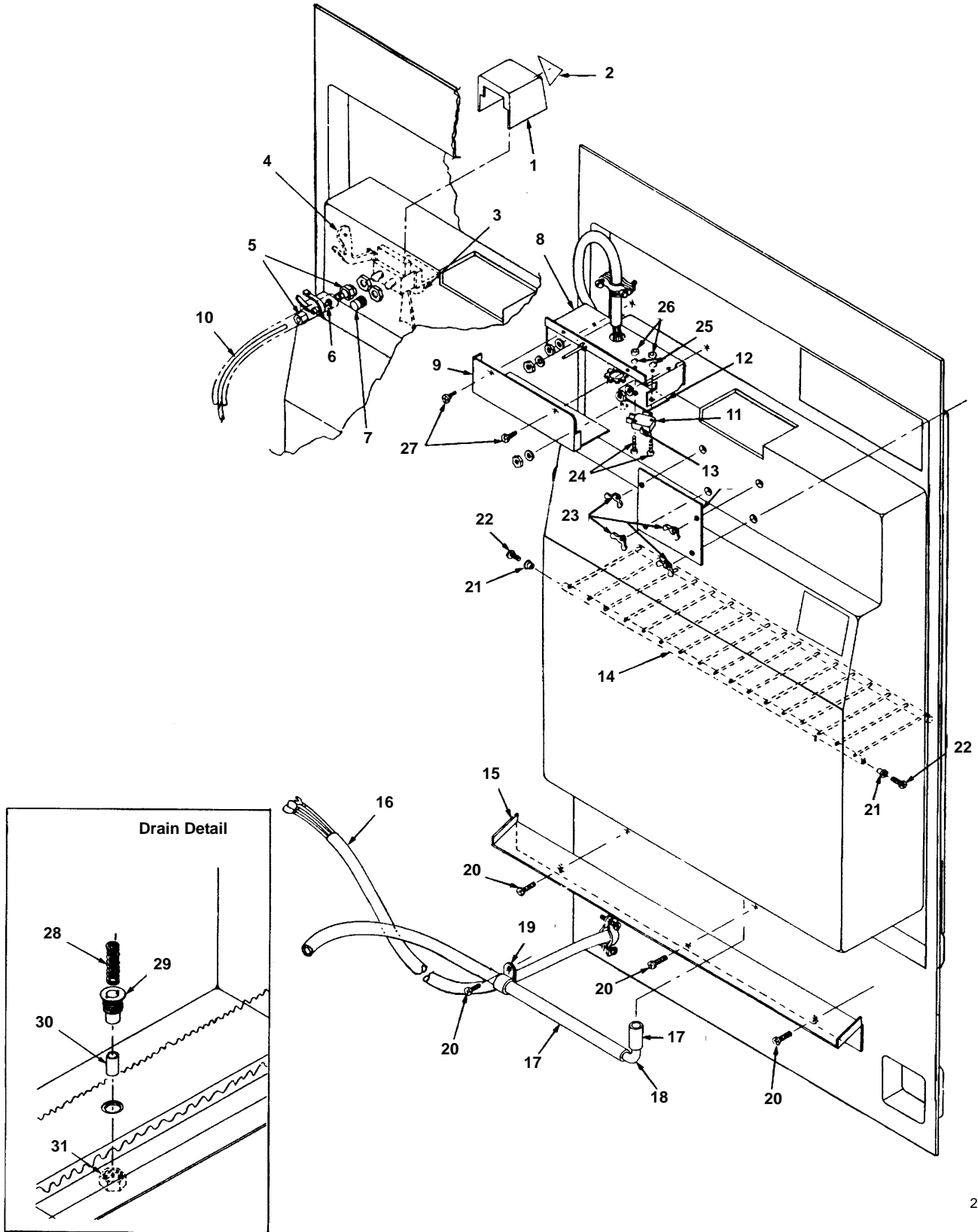
2133

DESCRIPTION

| DESCRIPTION | PART NO. |
|---|-------------|
| 1 Actuating Arm Assembly | † 76-2381-3 |
| 2 Screw, #12-24 x 1/4 Phil. Hd. | † 50-1329-9 |
| 3 Bushing 5/8" OD | 37-3015-3 |
| 4 Ice Chute w/Label | 76-2348-3 |
| 5 Label Only "ICE" | 81-3211-3 |
| 6 Spring – Extension | 33-0018-3 |
| 7 Ice Door Assembly (Includes Items 8, 9, 10 & 11)* | 76-2334-3 |
| 8 Ice Door With Molded Hinge | 43-0176-3 |
| 9 Spring – Stainless Torsion | 33-0014-3 |
| 10 Wire Clip – Pin Retainer | † 37-1203-1 |
| 11 Pin – Spring Core | 43-0193-3 |
| 12 Screw, #8-32 x 3/8 | † 50-2551-9 |
| 13 Ice Chute Insert | 665201-4 |
| 14 Delivery Plate/Spring Bracket | 76-2347-3 |
| 15 Wing Nut #8-32 | 54-8902-9 |
| 16 Switch | 23-0126-3 |
| 17 Screw, #4-40 x 5/8 | † 50-2061-9 |
| 18 Lockwasher | † 55-4407-9 |

* To replace metal hinge and cyclac door on units between SN 88000000 and 890300000, use #07-0075-3.

FTA-290, FSA-291, CONTINUED



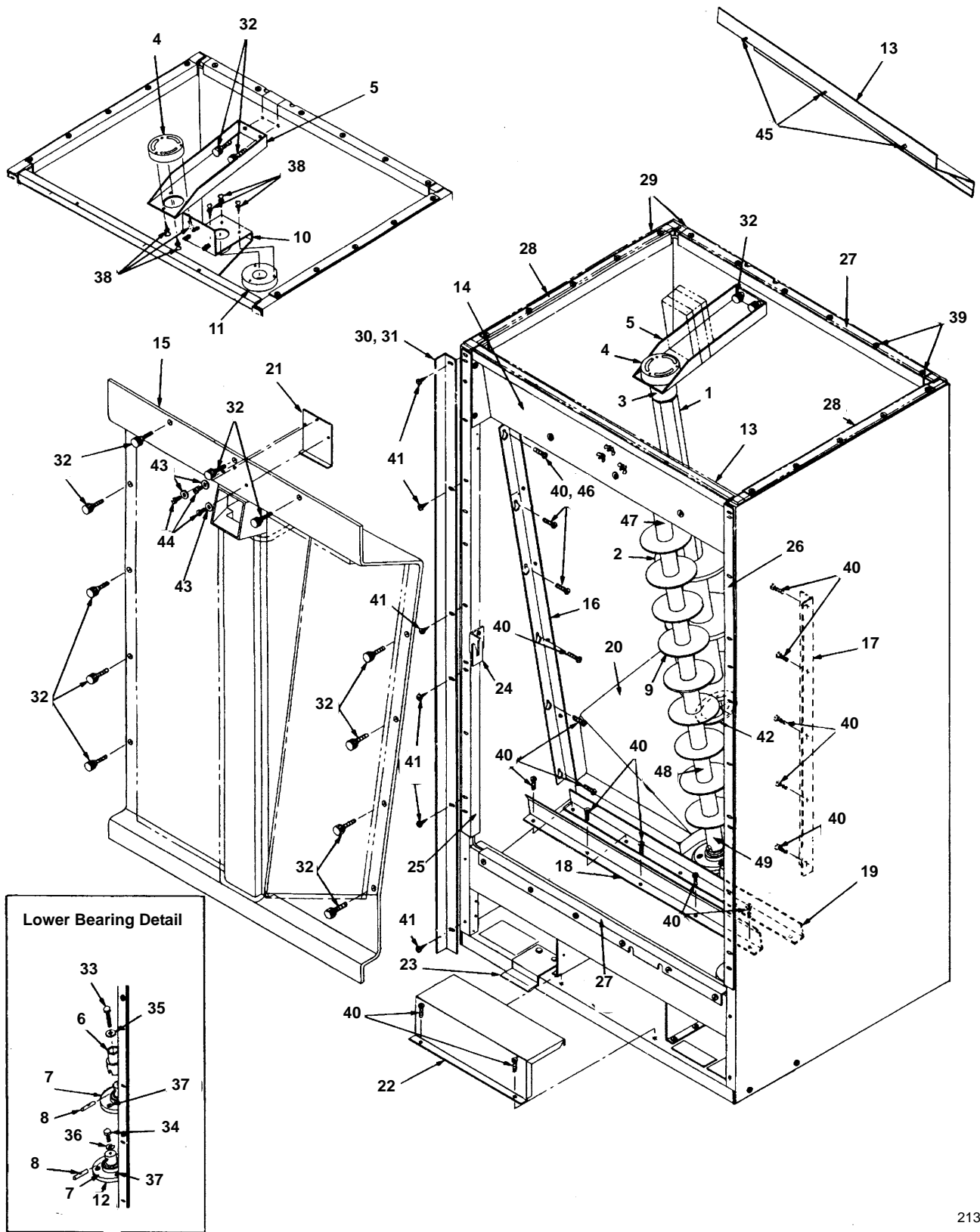
2134

FTA-290, FSA-291, CONTINUED

| DESCRIPTION | PART NO. |
|--|-----------------------|
| 1 Cover – Trigger Water Valve | 83-7602-3 |
| 2 Label – Water | 81-3105-3 |
| 3 Water Valve | † 202-FN-1101 |
| 3a Water Valve Trigger Only | No Longer Available |
| 4 Two Hand Water Trigger | 83-7603-3 |
| 5 Female Connector | 83-6127-3 |
| 6 Nylon Insert | † 44-2030-9 |
| 7 Cap | 83-7308-3 |
| 8 Ice Delivery Switch Box | 664631-4 |
| 9 Cover – Ice Delivery Switch | 664621-4 |
| 10 Poly Tubing 1/4" OD | 44-2029-1 |
| 11 Switch | 23-0126-3 |
| 12 Switch Insulator | 630261-4 |
| 13 Ice Delivery Backing Plate | 628811-4 |
| 14 Wire Grill | 34-0635-3 |
| 15 Condensation Angle | 665021-4 |
| 16 Cord Assembly | No Longer Available |
| 17 Vinyl Tube 1/2" ID 3/4" OD | † 44-2033-3 |
| 18 Plated Elbow | † No Longer Available |
| 19 Clamp | 56-5010-1 |
| 20 Screw, #10 - 24 x 5/8" Self Tap | † 52-0205-9 |
| 21 Shoulder Bushing | † 37-3010-9 |
| 22 Screw, #8-32 x 1/2" | † 50-2624-9 |
| 23 Wing Nut #8-32 | † 54-8913-9 |
| 24 Screw, #4-40 x 5/8" | † 50-2061-9 |
| 25 Lockwasher #4 | † 55-4496-9 |
| 26 Hex Nut #4-40 | † 54-2853-9 |
| 27 Screw #8 x 1/2 | † 51-2464-9 |
| 28 Spring – Compression | 33-0017-3 |
| 29 Drain Plug | 43-0130-1 |
| 30 Drain Tube | † 601001-1 |
| 31 Plastic Nut | 43-0129-1 |

† Refer to Cross Reference Guide

FTA-290, FSA-291, CONTINUED

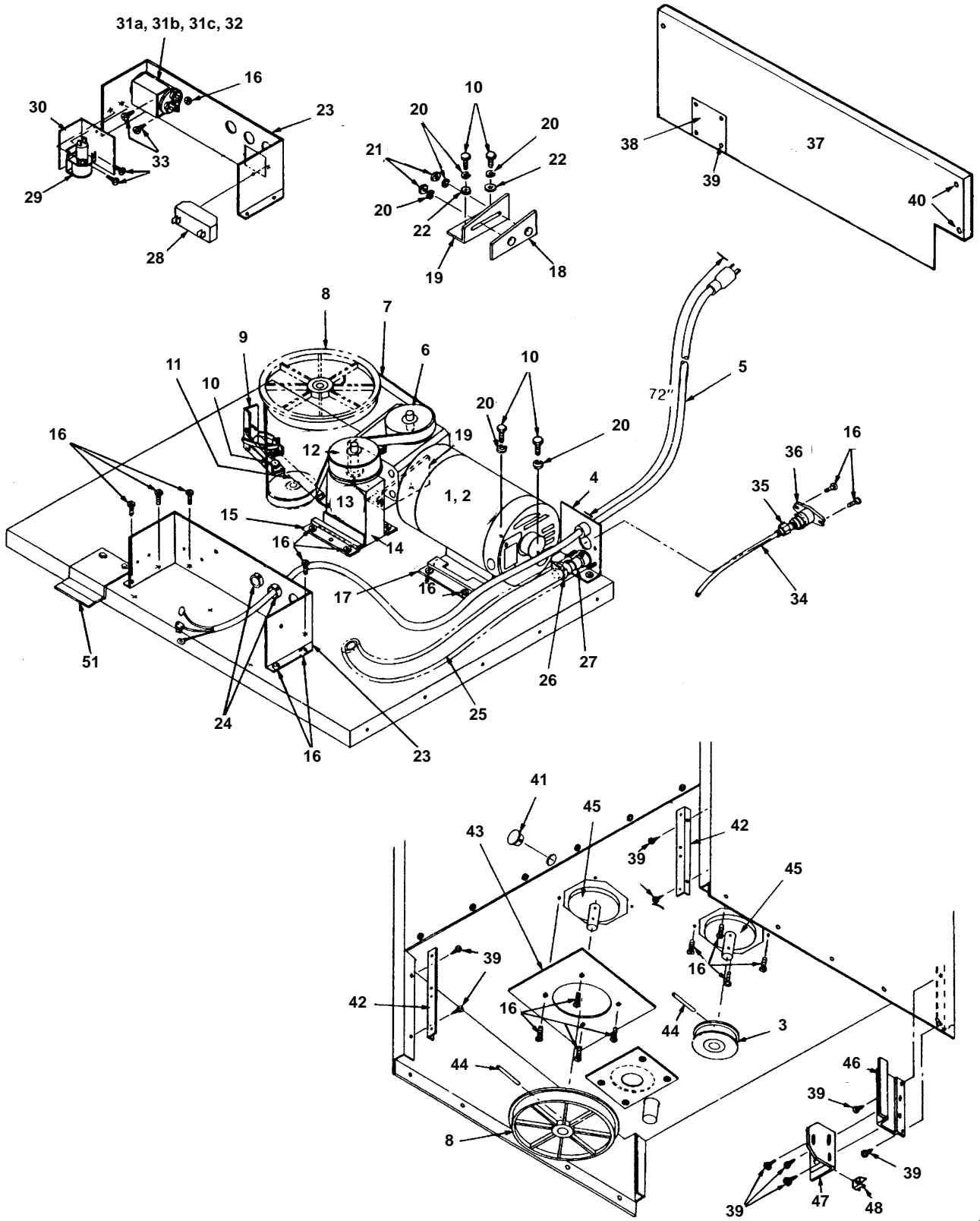


FTA-290, FSA-291, CONTINUED

| DESCRIPTION | PART NO. |
|--|---------------------|
| 1 Agitator Shaft | 665241-4 |
| 2 Agitator Auger Flighting 8" OD (Uses 5) | 43-0191-3 |
| 3 Upper Bearing Coupling | 43-0168-3 |
| 4 Agitator Bearing | 43-0174-3 |
| 5 Auger Mounting Bracket | 664431-4 |
| 6 Lower Bearing Coupling | 43-0169-3 |
| 7 Upper Housing Assembly † | 76-2337-3 |
| 8 Pin | 37-1032-3 |
| 9 Dispensing Auger Flighting 4" OD (Uses 11) | 50-3119-1 |
| 10 Auger Bearing Bracket | 665261-4 |
| 11 Auger Bearing | 43-0175-3 |
| 12 Upper Housing Seal (White Neoprene) | 37-1816-3 |
| 13 Deflector † | 666031-4 |
| 14 Upper Liner Bracket | No Longer Available |
| 15 Access Door Assembly | 76-2344-3 |
| 16 Left Hand Access Door Mounting Bracket | 76-2342-3 |
| 17 Right Hand Access Door Mounting Bracket | 76-2343-3 |
| 18 Access Door Retainer Bracket | 627361-4 |
| 19 Access Door Base Bracket | 627351-4 |
| 20 Liner Bottom Funnel | No Longer Available |
| 21 Ice Restrictor Bracket | 628681-4 |
| 22 Junction Box Cover | 76-2345-3 |
| 23 Door Shim | 630811-4 |
| 24 Latch – Door Lock (After SN 890762560) | 630661-4 |
| Latch – Door Lock (Prior SN 890762559) † | 665231-4 |
| Lower Latch (Not shown) | 630671-4 |
| 25 Left Hand Front Trim | 664191-4 |
| 26 Right Hand Front Trim | 664192-4 |
| 27 Top Trim | 627391-4 |
| 28 Top Side Trim | 664201-4 |
| 29 Foam Tape † | 92-0248-9 |
| 30 Tamper Bracket (Fawn) | 658551-4 |
| 31 Tamper Bracket (Stainless Steel) | 658553-4 |
| 32 Thumbscrew #8-32 † | 53-0504-9 |
| 33 Screw, 1/4-20 x 1" † | 50-3353-9 |
| 34 Screw, 1/4-20 x 1/2" † | 50-3236-9 |
| 35 Flatwasher 9/32 ID x 5/8 † | 55-7304-9 |
| 36 Lockwasher 1/4 Split † | 55-4511-9 |
| 37 Cap Screw 1/4-20 x 2-1/8" | 50-1325-3 |
| 38 Thumbscrew #8 x 1/2" † | 50-1216-9 |
| 39 Screw, #8 x 1/2" Type A † | 51-2164-9 |
| 40 Screw, #10-24 x 5/8" Self Tap † | 52-0205-9 |
| 41 Screw, #8 x 1/2" † | 51-2153-9 |
| 42 Washer, Agitator Shaft | 628021-4 |
| 43 Flatwasher #8 † | 55-0426-9 |
| 44 Screw, #8-32 x 3/8" † | 50-2551-9 |
| 45 Wingnut #8-32 with Locking Insert † | 54-8908-9 |
| 46 Upper Bearing | 600153-1 |
| 47 Clevis Pin | 37-1208-3 |
| 48 Dispensing Auger Shaft *IMPORTANT – See Note Below | 000000168 |
| 49 Lower Coupling | 50-3119-0 |
| *When replacing a fluidized steel auger with plastic auger assembly, the following parts are required. | |
| Auger Shaft | 000000168 |
| Upper Bearing | 600153-1 |
| Clevis Pin | 37-1208-3 |
| Auger Flighting (Uses 11) | 50-3119-1 |
| Lower Coupling | 50-3119-0 |

† Refer to Cross Reference Guide

FTA-290, FSA-291, CONTINUED



FTA-290, FSA-291

| DESCRIPTION | PART NO. |
|--|---------------------|
| 1 Drive Motor/Gear Reducer Assy., 60 Hz** | † 76-2681-3 |
| 2 Drive Motor Only 60 Hz | 76-2680-3 |
| 2a Run Capacitor 20 MFD 370V/60 Hz (for Boston Motor)** | † 85-0341-3 |
| 2b Run Capacitor 50 MFD 240V/60 Hz (for Leeson Motor) | 85-0481-3 |
| 3 Small Drive Pulley w/Flanged Hub | 37-4012-3 |
| 4 Adapter Mounting Bracket | No Longer Available |
| 5 Supply Cord | 20-3067-3 |
| 6 Small Drive Pulley with Keyway | 37-4008-3 |
| 7 Positive Drive Belt | 37-0021-3 |
| 8 Large Drive Pulley | 37-4010-3 |
| 9 Tensioner Bracket – Spring | 630381-4 |
| 10 Screw, 5/16 – 18 x 5/8" Machine | † 50-3565-9 |
| 11 Tensioner Spring | 33-0016-3 |
| 12 Belt Tightener Wheel | 43-0172-3 |
| 13 Washer | 55-7334-3 |
| 14 Belt Tensioner Mounting Bracket | 665841-4 |
| 15 Tensioner Lock Bracket | 629681-4 |
| 16 Screw, #10-24 x 5/8" Self Tap | † 52-0205-9 |
| 17 Gear Motor Lock Bracket | 628101-4 |
| 18 Shim Angle Weldment | 629701-4 |
| 19 Gear Box Angle Bracket | 76-2336-3 |
| 20 Lockwasher, 5/16 Split | † 55-7313-9 |
| 21 Hex Nut, 1/4 – 20 | † 54-2952-9 |
| 22 Washer, 5/16 Flat | † 55-7309-9 |
| 23 Junction Box | 665111-4 |
| 24 Bushing – 7/8" | † 25-0140-9 |
| 25 Vinyl Tube 5/8" ID – 7/8" OD | † 44-2038-3 |
| 26 Hose Clamp | † 56-5060-9 |
| 27 Drain Fitting Assy | † 617511-4 |
| 28 Sinpac Switch (for Boston Motor) | † 76-2335-3 |
| 29 Mercury Relay 115V/230V | † 76-2685-3 |
| 30 Mylar Insulation | † 601500-1 |
| 31a Start Capacitor for Baldor Motor. 130-156 MFD @ 125V Case Size 4/60 Cycle | No Longer Available |
| 31b Start Capacitor for Century Motor 161-193 MFD @ 165V/60 Cycle | 85-0387-3 |
| 31c Start Capacitor for Emerson Motor. 189-227 MFD @ 165V Case Size 4 | 85-0398-3 |
| 32 Capacitor Mounting Bracket (for Boston Motor) | 628621-4 |
| 32a Capacitor Mounting Bracket (for Leeson Motor) | 601353-1 |
| 33 Screw #8 x 1/2" Type B | † 51-2464-9 |
| 34 Polyflow Tubing 1/4" OD | 44-2029-1 |
| 35 Male Connector | 13-6096-1 |
| 36 Water Adapter | 600242-1 |
| 37 Lower Rear Access Panel | 687391-4 |
| 38 Cover – Soda Line Entrance | 628171-4 |
| 39 Screw – Soda Line Cover #8 x 1/2" | † 51-2164-9 |
| 40 Screw – Access Panel #8 – 3/4 | † 51-2465-9 |
| 41 Hole Plug 7/8" | 43-0146-3 |
| 42 Mounting Bracket – Lower Rear Access Panel | 627861-4 |
| 43 Bearing Housing Support Plate | 629521-4 |
| 44 Roll Pin | † 37-1204-9 |
| 45 Lower Bearing Housing Assy | 76-2314-3 |
| 46 Lower Door Lock Mounting Bracket - Use up to SN890762559 | 627961-4 |
| 47 Door Lock Bracket - Use up to SN890762559 | † 665231-4 |
| 48 Nut Retainer - Use up to SN890762559 | † 54-7501-9 |
| 49 Latch for Dispenser Door - Use After SN890762560 | 630661-4 |
| 50 Screw for Latch, #10 – 24 x 3/4" - Use After SN890762560 | † 52-0212-9 |
| 51 Door Shim | 630811-4 |

**See Page 10 for 230V parts.

† Refer to Cross Reference Guide

230V/50 CYCLE PARTS

All parts are the same as 60 Hz Model with the following exceptions:

| DESCRIPTION | PART NO. |
|---|-------------|
| Drive Motor/Gear Box Assembly 50 Hz | † 76-2683-3 |
| Drive Motor Only 50 Hz | 76-2682-3 |
| Run Capacitor 50 Hz | † 85-0341-3 |

† Refer to Cross Reference Guide