

## Custom SC Raised Coldwall Refrigerator models 51000PR

model ☐ 51338PR ☐ 51341PR ☐ 51344PR ☐ 51347PR ☐ 51356PR ☐ 51359PR ☐ 51362PR  
☐ 51365PR ☐ 51368PR ☐ 51377PR ☐ 51380PR ☐ 51383PR ☐ 51386PR ☐ 51389PR  
☐ 51395PR ☐ 513114PR ☐ 513126PR

### Description:

Self-contained refrigerator storage unit with mechanically cooled raised rail. These units are offered in a variety of lengths to meet your specific base storage or pan storage requirements. The mechanically cooled pan opening uses Randell's exclusive design technologies, such as our Exclusive Refrigerated Raised Rail Thermostat, allowing customers to make adjustments to the rail temperatures (independent of the base). Automatic hot gas evaporator is provided for eliminating the base coil's condensation. The rail is designed to be a manual defrost system and allows the operator to shut the rail off while leaving the base operational.

### Specifications:

**CABINET EXTERIOR:** Top to be one piece of die-formed 16 gauge stainless steel with 2 1/2" nosing. Ends at top fitted with recessed heavy duty steel bars for field bolting units together, producing a hairline seam. Hinged louver panel to be stainless steel. Exterior body to be corrosion resistant steel. Door opening frames are ABS and contain magnetic strip for positive seal of door gaskets. Work surface to be at 36" work height. Legs to be 6" high stainless steel with adjustable bullet foot. Legs mounted to full length channel frame assembly which is integrally welded to bottom of body assembly. Legs can be moved left to right to avoid floor obstacles during installation.

**CABINET INTERIOR:** Base interior to be ABS thermoplastic at ends only. Stainless steel interior liner to be coved cornered to form bottom, back and top. One baked enamel finished shelf provided behind each door. Unit insulation to be CFC free foamed in place urethane.

**DOORS:** Door fronts to be 22-gauge stainless steel exterior front with 16 gauge stainless steel door pulls/handles. The interior liner is vacuum formed ABS with integral gasket retainer for easy cleaning and accepts Randell's Exclusive Press Fit Gasket system. Doors are mounted on concealed hinges. One removable wire shelf is supplied behind each door.

**REFRIGERATION:** System is a balanced heavy duty R-404A refrigerant system with an energy efficient automatic defrost (for base evaporator coil). The base is cooled by an independent blower coil operating on its own expansion valve and thermostat and operates through a dedicated solenoid valve. The rail is provided with a pressure control to operate the condensing unit on demand; and a rail thermostat (located in the compressor housing) making it easily adjustable for specific ambient conditions without effecting the balance of the system. An on/off switch for the rail is located behind the hinged louver panel.

model 51362PR shown with optional finished end

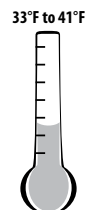


### Standard Features:

- Low profile 2" recess pan design provides easy reach and optimal pan temperatures & reliability
- Balanced high capacity refrigeration system with expansion valve metering—able to handle peak period demands
- Front breathing compressor housing with directed air flow
- Easy maintenance press-fit gaskets
- Raised rail thermostat
- Drain in rail for easy cleaning
- Hinged louver for easy access
- 6" high legs—adjustable and movable
- Foamed in place "CFC free" urethane insulation
- Hinged removable stainless steel covers
- Automatic base defrost with condensate evaporator
- Available up to 16' under one common assembly
- Adapter bars standard to accommodate a compliment of 1/6 size pans
- Front breathing louver design allows sealing to wall & curb mounting without special requirements

### Options & Accessories:

- ☐ Patented Drawer Cartridge Systems - **Exclusive Randell Feature + 3 years parts & labor warranty!**
- ☐ Partial length rails
- ☐ Flat-top rails (non-angled) for use in display type kitchens
- ☐ Ambient fighting hood design with slide back cover
- ☐ Hinged slide back removable cover
- ☐ Lift-off (removable) night covers
- ☐ Tray racks for sheet pans (33" dp., 24" doors only)
- ☐ Cutting boards
- ☐ Stainless Steel Ends
- ☐ Stainless Steel Back
- ☐ Laminate fronts, ends and back options
- ☐ Casters in lieu of legs
- ☐ Export voltages
- ☐ Over-shelving storage options
- ☐ Compressor on right option
- ☐ Wide pan rail



**51000PR SERIES (COMPRESSOR LEFT) SELF-CONTAINED REFRIGERATORS WITH STANDARD DEPTH RAISED RAIL**

Length	38"	41"	44"	47"	56"	59"	62"	65"	68"
Model 33"	51338PR	51341PR	51344PR	51347PR	51356PR	51359PR	51362PR	51365PR	51368PR
# of doors	(1) 24"	(1) 21" + 6" coil hsg.	(1) 24" + 6" coil hsg.	(1) 27" + 6" coil hsg.	(2) 21"	(1) 21", (1) 24"	(2) 24"	(1) 24", (1) 27"	(2) 27"
Min. Compr. Hsg.	14"	14"	14"	14"	14"	14"	14"	14"	14"
# Pans	(6-8) 1/6	(6-10) 1/6	(10) 1/6	(12) 1/6	(6-14) 1/6	(8-14) 1/6	(8-16) 1/6	(8-16) 1/6	(8-16) 1/6
Min. Length of Rail	27"	27"	27"	27"	27"	34"	34"	34"	34"
Storage Cu. Ft. 33"	4.63	5.50	6.37	7.23	9.84	10.71	11.57	12.44	13.31
Storage Cu. Ft. 29"	3.89	4.62	5.35	6.08	8.26	8.99	9.72	10.45	11.18
Work surface Depth 33"	14.8" wide	14.8" wide	14.8" wide	14.8" wide	14.8" wide	14.8" wide	14.8" wide	14.8" wide	14.8" wide
H.P./Refrigerant	1/3hp/404a	1/3hp/404a	1/3hp/404a	1/3hp/404a	1/3hp/404a	1/3hp/404a	1/3hp/404a	1/3hp/404a	1/3hp/404a
Amps	9.0	9.0	9.0	9.0	9.0	9.0	9.0	9.0	9.0
Volt/Cycle/Phase	115/60/1	115/60/1	115/60/1	115/60/1	115/60/1	115/60/1	115/60/1	115/60/1	115/60/1
NEMA	5-15P	5-15P	5-15P	5-15P	5-15P	5-15P	5-15P	5-15P	5-15P
Ship Wt. - lbs.	456	475	494	513	563	581	600	619	638
BTU Design load	235/272	294/294	294/294	353/338	412/503	412/525	470/547	470/569	529/591
BTU System Cap.	1006/2090	1109/2040	1109/2141	1201/2141	1283/2141	1283/2141	1356/2141	1356/2141	1423/2141

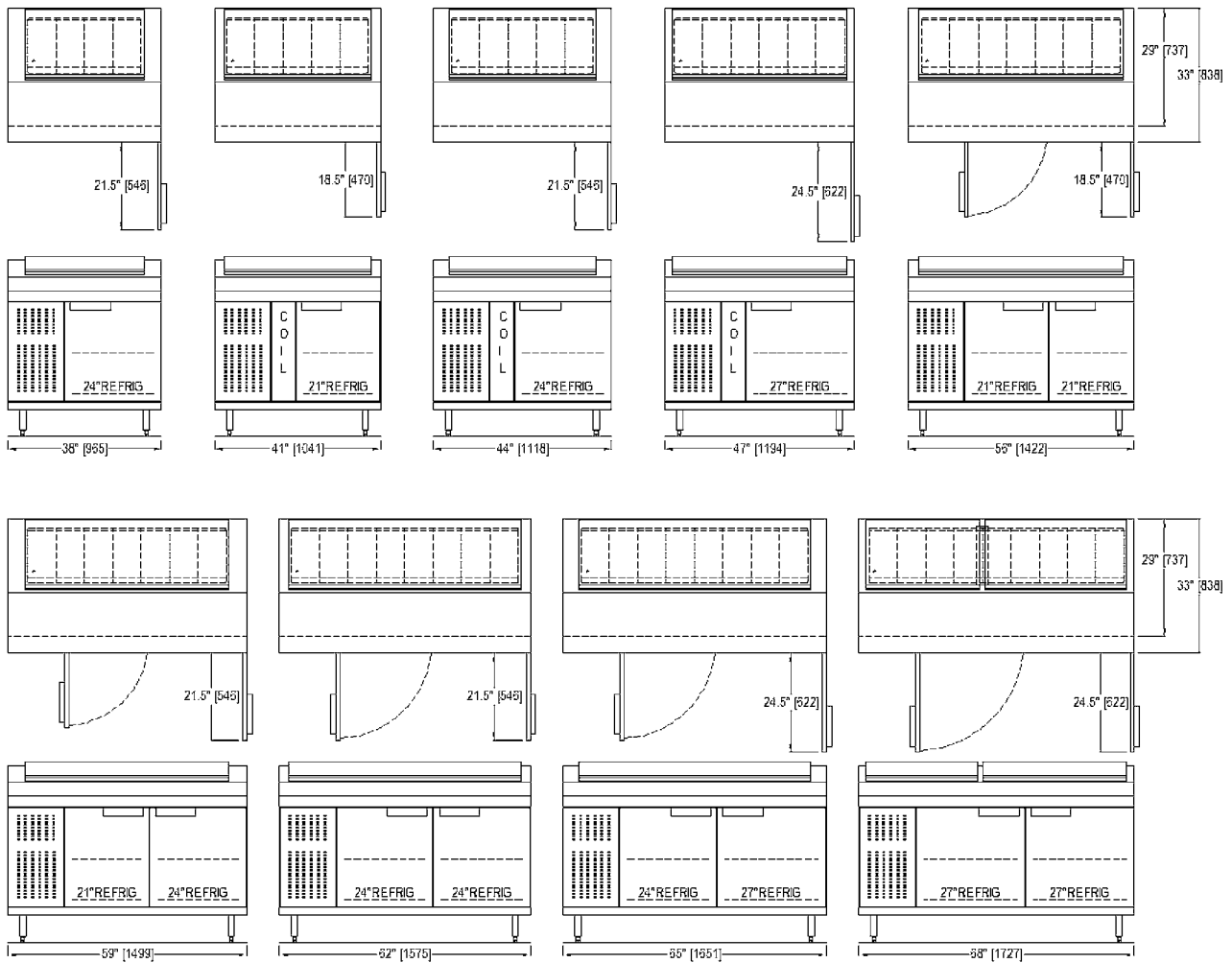
Length	77"	80"	83"	86"	89"	95"	114"	126"
Model 33"	51377PR	51380PR	51383PR	51386PR	51389PR	51395PR	513114PR	513126PR
# of doors	(3) 21"	(2) 21", (1) 24"	(2) 24", (1) 21"	(3) 24"	(2) 24", (1) 27"	(3) 27"	(4) 24"	(4) 27"
Min. Compr. Hsg.	14"	14"	14"	14"	14"	14"	18"	18"
# Pans	(10-18) 1/6	(10-18) 1/6	(10-20) 1/6	(10-20) 1/6	(10-22) 1/6	(12-20) 1/6	(14-26) 1/6	(14-30) 1/6
Min. Length of Rail	41"	41"	41"	41"	41"	48"	55"	55"
Storage Cu. Ft. 33"	15.91	16.78	17.65	18.52	19.39	21.12	25.46	27.78
Storage Cu. Ft. 29"	13.37	14.10	14.83	15.56	16.28	17.74	21.39	23.33
Work surface Depth 33"	14.8" wide	14.8" wide	14.8" wide	14.8" wide	14.8" wide	14.8" wide	14.8" wide	14.8" wide
H.P./Refrigerant	1/2hp/404a	1/2hp/404a	1/2hp/404a	1/2hp/404a	1/2hp/404a	1/2hp/404a	5/8hp/404a	3/4hp/404a
Amps	12	12	12	12	12	12	12.8	12.8
Volt/Cycle/Phase	115/60/1	115/60/1	115/60/1	115/60/1	115/60/1	115/60/1	115/60/1	115/60/1
NEMA	5-15P	5-15P	5-15P	5-15P	5-15P	5-15P	5-20P	5-20P
Ship Wt. - lbs.	703	723	741	760	798	835	939	1014
BTU Design load	588/755	588/777	647/799	647/821	706/843	764/887	882/1095	1000/1184
BTU System Cap.	1866/3319	1866/3319	1966/3319	1966/3319	2061/3319	2151/3319	2735/3946	3330/6435

**NOTE:**

Pan capacity reflected is the actual amount of pans that are clearly accessible by the operator. Units with multiple covers may actually have additional pan capacity that is partially obstructed by the cover divider/mullion.

BTU load and capacity ratings based on 86F ambient.



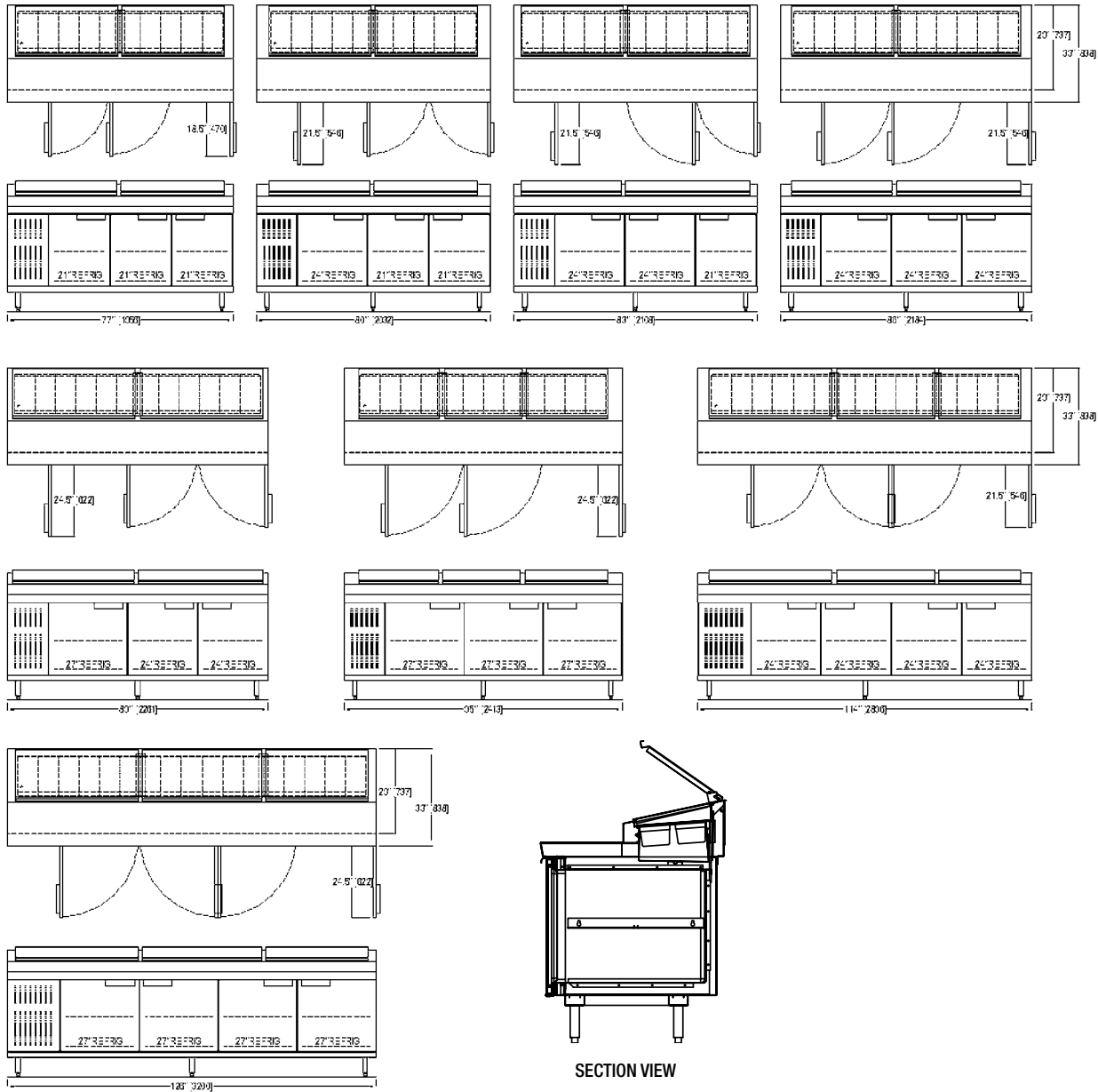


CE<sup>®</sup>

UL<sup>®</sup>

UL<sup>®</sup>

NSF


**DOOR OPENING SIZES - INTERIOR DEPTHS**

Door Width	Clearances Through Door		Interior Depth Behind Door (unit depths in parentheses)
	Lt. to Rt.	Top to Bottom	
18"	13 1/4"	20 1/4"	(33")-26" (29")-22" (22")-15.5"
21"	16 1/4"	20 1/4"	(33")-26" (29")-22" (22")-15.5"
24"	19 1/4"	20 1/4"	(33")-26" (29")-22" (22")-15.5"
27"	22 1/4"	20 1/4"	(33")-26" (29")-22" (22")-15.5"

• Shelf depth is 25 1/4" on 33" deep equipment, 21 1/4" on 29" deep equipment, and 14 1/2" on 22" deep equipment.

**CE D**
**UL**
**UL**
**NSF**