



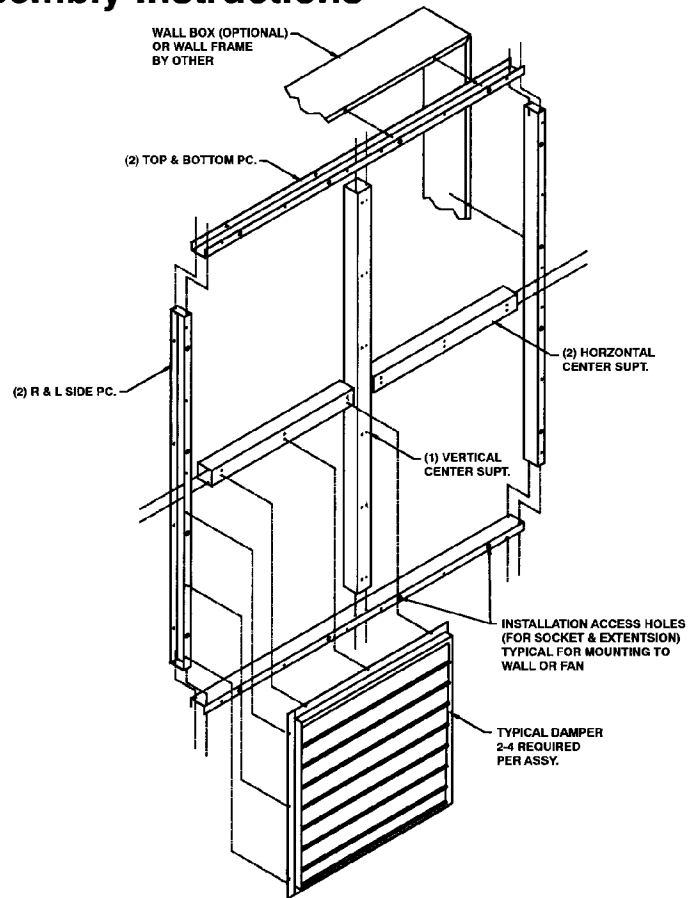
ACME ENG. & MFG. CORP
P.O. Box 978
Muskogee, OK 74402
918/682-7791 Fax: 918/682-0134
www.acmefan.com www.acmeag.com
www.acmehort.com

Form 610591

ASSEMBLY AND MOTORIZING INSTRUCTIONS FOR WAG, WAGH, WAGC & WAGCH QUAD Panel Dampers

Mullion Assembly Instructions

1. Attach (2) horizontal center supports to vertical center support. Align pre-punched holes of horizontal center support to pre-punched holes of vertical center support and attach using #14 screws.
2. Attach right and left side pieces to the horizontal center support. With installation access holes facing outward, align left and right side vertical support to pre-drilled holes of the horizontal support and attach using #14 screws.
3. Attach top and bottom pieces to vertical center support. With installation access holes facing outward, align top and bottom pre-punched hole in right, left and center supports and attach using #14 screw.
4. Install mullion as required.
5. Install dampers on mullion. Align pre-punched holes in damper frame to pre-punched holes in mullion assembly. Attach with #14 screws provided.



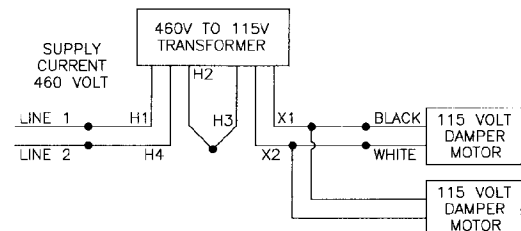
Motorizing Instructions

This CAM motor operation package consists of four major components: Motor with base, CAM assembly (with pull spring, CAM pulley and spring retainer) and hardware. Follow steps in sequence for best results.

Make all electric connections using good wiring practices and in accordance with National Electric Code and any local codes.

HINTS

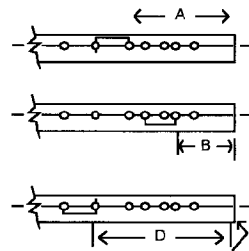
- (A) On new installations, assembly of the motorizing kit would be more easily done prior to installing the shutter.
- (B) DO NOT ATTACH THE CAM OPERATOR TO THE MOTOR UNTIL THE CAM ASSEMBLY IS ATTACHED TO THE DAMPER LADDER BAR AND THE MOTOR IS ATTACHED TO THE DAMPER FRAME.
- (C) Each 460V/115V transformer can be used to handle up to 2 motor operator kits.



Single Panel Instructions

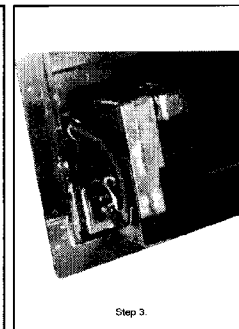
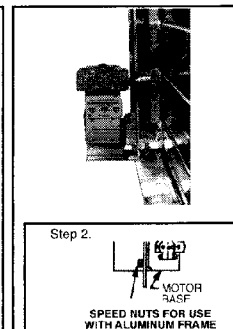
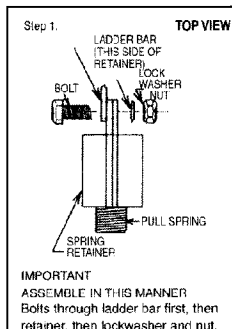
1. Refer to chart below for proper location. Attach the pull spring retainer to the damper ladder bar using two (2) bolts, lockwashers and nuts. Opening the damper will give easy access to the ladder bar.
2. Mount the motor and base using three (3) No. 8 screws (and three [3] speed nuts on aluminum frames) by aligning the slots in the motor with the three (3) holes in the frame. (Note: On some models, the damper frame is not pre-drilled. In this case, use the motor base as a template to locate the proper locations. For single panel dampers, the motor base should fit in the lower left corner of the damper as viewed from the inlet side. For double panel dampers,
3. Attach the CAM pulley to the motor shaft. Position the CAM assembly so that approximately 1/8" of the motor shaft is showing through the CAM pulley, then tighten the retainer bolt.
4. Check to see that all other bolts in the assembly are tight.

MATCH TEMPLATE HOLE PAIR TO DAMPER MODEL							
A*		B*		D*		D*	
IN	MM	IN	MM	IN	MM	IN	MM
2 1/32	58	1 1/4	32	2 1/16	59	2 1/16	59
3131		3232		3333		3434	
3535		3636		3737		3838	
3939		4040		4141		4242	
4343		4444		4545		4646	
4747		4848		4949		5050	
5151		5252		5353		5454	
5555		5656		5757		5858	
5959		6060		6161		6318	
6363							



Drilling template for pull spring retainer. Drill: 2 - 11/64" holes

Place this edge on end of ladder bar.



NOTICE

These instructions cover the usual installation, operation and maintenance methods for which the product(s) was designed. They do not purport to cover all details or variations in the product(s) nor to provide for every possible contingency that might be met in connection with the installation, operation and maintenance. For any departures from these instructions, or should particular problems arise which are not covered sufficiently for the purchaser's purpose, the matter should be referred to Acme Engineering and Manufacturing.

DISCLAIMER

Acme Engineering and Manufacturing Corporation has made a diligent effort to illustrate and describe the products in this literature accurately; however, such illustrations and descriptions are for the sole purpose of identification and do not express or imply a warranty that the products are merchantable or fit for a particular purpose, or that the products will necessarily conform to the illustrations or descriptions or dimensions.

WARNING

Acme products are designed and manufactured to provide reliable performance, but they are not guaranteed to be 100% free of defects. Even reliable products will experience occasional failures and this possibility should be recognized by the User. If these products are used in a life support ventilation support system where failure could result in loss or injury, the user should provide adequate back-up ventilation, supplementary natural ventilation or failure alarm system or acknowledge willingness to accept the risk of such loss or injury.

LIMITED WARRANTY

WARRANTY AND DISCLAIMER. Acme Engineering and Manufacturing Corporation extends this limited warranty to the original buyer and warrants that products manufactured by Acme shall be free from original defects in workmanship and materials for two years from date of shipment, provided same have been properly stored, installed, serviced, maintained and operated. This warranty shall not apply to products which have been altered or repaired without Acme's express authorization, or altered or repaired in any way so as in Acme's judgment to affect its performance or reliability, nor which have been improperly installed or subjected to misuse, negligence or accident, or incorrectly used in combination with other substances. The Buyer assumes all risks and liability for the results of use of the products. Warranties on purchased parts such as electric motors, pumps and controls are limited to the terms of warranty extended by our supplier.

LIMITATION OF REMEDY AND DAMAGES. All claims under this warranty must be made in writing and delivered to Acme Engineering and Manufacturing Corporation, Box 978, Muskogee, Oklahoma, 74402 within 15 days after discovery of the defect and prior to the expiration of two years from the date of shipment by Acme of the product claimed defective, and Buyer shall be barred from any remedy if Buyer fails to make such claim within such period.

Within 30 days after receipt of a timely claim, Acme shall have the option either to inspect the product while in Buyer's possession or to request Buyer to return the product to Acme at

Buyer's expense for inspection by Acme. Acme shall replace, or at its option repair, free of charge, any product it determines to be defective, and it shall ship the repaired or replacement product to Buyer F.O.B., point of shipment provided, however, if circumstances are such as in Acme's judgement to prohibit repair or replacement to remedy the warranted defects, the Buyer's sole and exclusive remedy shall be a refund to the Buyer of any part of the invoice price, paid to Acme for the defective product or part.

Acme is not responsible for the cost of removal of the defective product or part, damages due to removal, or any expenses incurred in shipping the product or part to or from Acme's plant, or the installation of the repaired or replaced product or part.

Implied warranties, when applicable, shall commence upon the same date as the express warranty provided above, and shall except for warranties of title, extend only the duration of the express warranty. Some states do not allow limitations on how long an implied warranty lasts, so the above limitation may not apply to you. The only remedy provided to you under an applicable implied warranty and the express warranty shall be the remedy provided under the express warranty. Subject to the terms and conditions contained therein, Acme shall not be liable for incidental and consequential losses and damages under the express warranty, any applicable implied warranty, or claims for negligence, except to the extent that this limitation is found to be unenforceable under applicable state

law. Some states do not allow the exclusion nor limitation of incidental or consequential damages, so the above limitation or exclusion may not apply to you. This warranty gives you specified legal rights, and you may also have other rights which vary from state to state.

No employee, agent, dealer, or other person is authorized to give any warranties on behalf of Acme or to assume for Acme any other liability in connection with any of its products except in writing and signed by an officer of Acme.

TECHNICAL ADVICE AND RECOMMENDATIONS, DISCLAIMER. Notwithstanding any past practice or dealings or any custom of the trade, sales shall not include the furnishing of technical advice or assistance or system design. Any such assistance shall be at Acme's sole option and may be subject to additional charge.

Acme assumes no obligation or liability on account of any recommendations, opinions or advice as to the choice, installation or use of products. Any such recommendations, opinions or advice are given and shall be accepted at your own risk and shall not constitute any warranty or guarantee of such products or their performance.

GENERAL. In no event shall any claim for consequential damages be made by either party. The Company will comply with all applicable Federal, State and local laws.