

somat®

Remote Waste Pulping System



Description

Standard SOMAT® Model HE-9TS Hydra-Extractor® with two 5 HP drive motors, return pump, chemical additive pump, automatic rinse system, valve package, Som-A-Trol control panel and discharge chute with limit switch.

Benefits

- As much as 8 to 1 (87.5%) volume reduction
- Reduced labor cost
- Better sanitation
- Water conservation
- Improved operator morale
- Reduced silverware loss
- Processes a wide variety of waste

Operation: Slurry, consisting of 5% solids and 95% water, is automatically transported through a pipeline after being processed in the pulper(s) to the Hydra-Extractor, where water is removed and the resultant semi-dry pulp is discharged into a haul-away container. The extracted water is recovered and returned to the pulper(s) for reuse. The capacity of the Hydra-Extractor determines how many pulpers can be designed to operate with it concurrently.

Somat equipment provides an economic and efficient answer to cutting the high and ever increasing costs associated with waste handling. Manufactured by Somat Company of Lancaster, Pennsylvania, originators of waste pulping systems and specialists in waste reduction technology.

Approval:

Item No. _____

**SOMAT Model: HE-9TS
Hydra-Extractor**

Technical Specifications

Hydra-Extractor: Rigid stainless steel weldment with stainless steel stand, head assembly with two 5 HP belt driven motors each matched to a 25:1 gear reducer, 28" long stainless steel discharge chute with limit switch, chemical additive pump, automatic rinse system. Water extractor mechanism consists of two 9" diameter stainless steel screws each with nylon brush edge, stainless steel adjustable gate and matching 9" diameter reinforced stainless steel screen.

Valve Package: All valves required for proper operation (automatic rinse system).

Som-A-Trol® (Electrical Control Panel): UL approved. Includes all necessary electrical components prewired to a terminal strip in a NEMA 4 stainless steel enclosure.

Options Available:

- ☐ Extended discharge chute (Shown)
- ☐ Hinged chute
- ☐ Extended stand
- ☐ Pulp level detector
- ☐ Special electrical characteristics

Special Requirements:

- 10 HP or larger return pump. Determined by piping conditions.
- Water economizing tank. Required when 10 HP or larger return pump is used.
- Pulp Screw Conveyor and controls. Required to convey pulp from discharge chute to haul-away container when location of container does not permit gravity discharge.

Electrical Characteristics: 208/230/460 volt, 3 Phase, 60 Hertz

Capacity: 5,000 pounds per hour of foodservice waste mix, consisting of food scraps, plastics, milk cartons, paper, aluminum foil and cardboard.

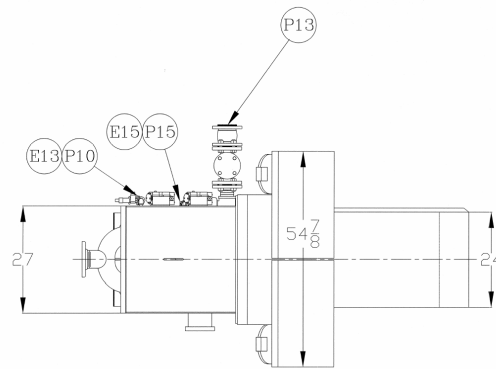
Finish: All exterior surfaces, except where polished stainless steel, are prime coated and finished with two coats of enamel paint.

Equipment only is supplied by SOMAT Company; installation, piping and wiring not included.

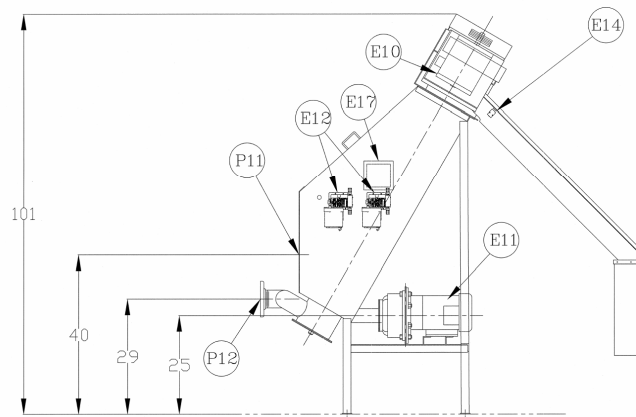


Somat Company
Division of ITW Food Equipment Group LLC
165 Independence Court
Lancaster, PA 17601 USA
Tel: 717-397-5100 Fax: 717-291-0877
1-800-237-6628
www.somatcompany.com

Remote Pulping System



PLAN VIEW OF EXTRACTOR



ELEVATION VIEW OF EXTRACTOR

Somat® Model HE-9TS Hydra-Extractor

Utility Connections

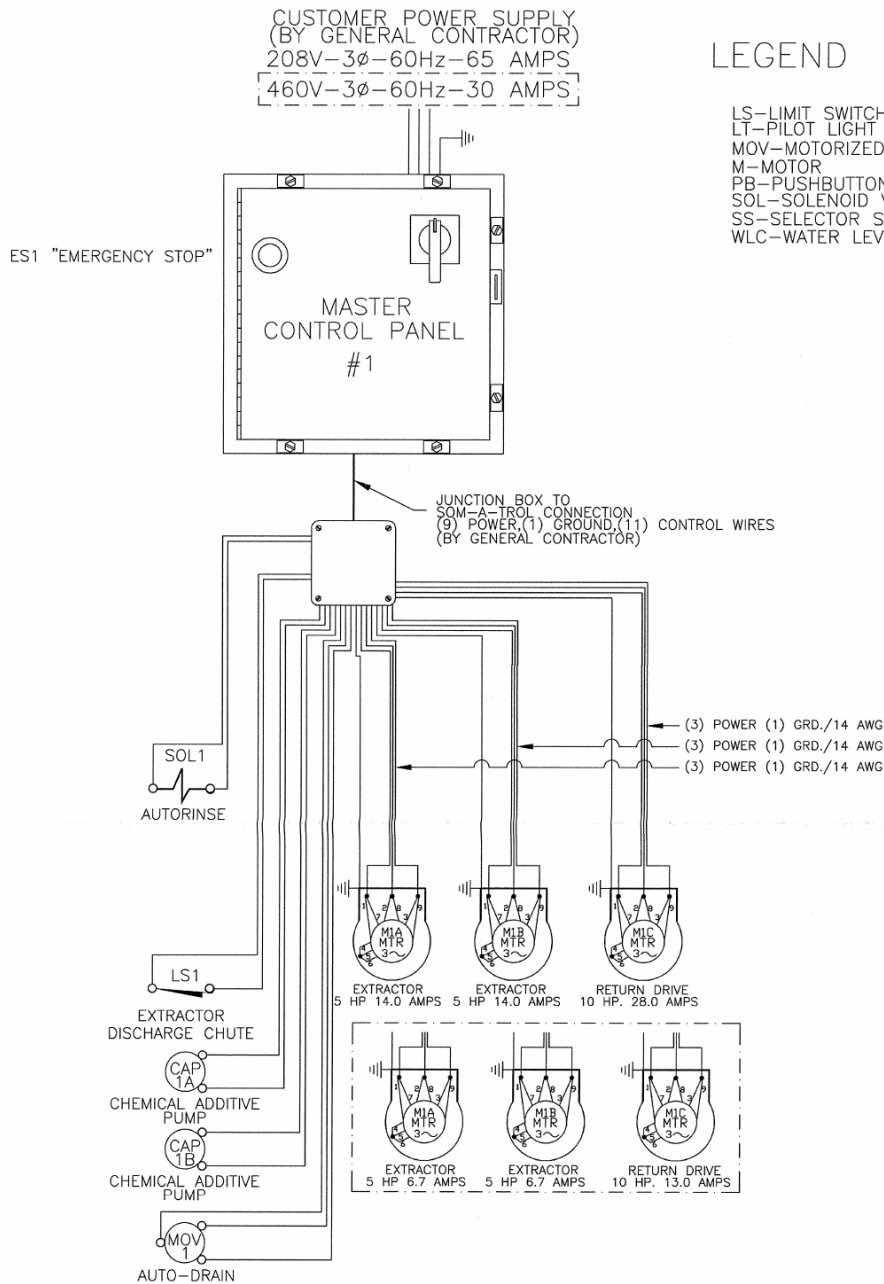
E10- Extractor Drive Motor (5Hp)	P10- Fresh Hot Water Inlet
E11- Return Pump Motor	P11- Overflow Outlet
E12- Chemical Additive Pump	P12- Slurry Inlet
E13- Fresh Hot Water Solenoid	P13- Return Water Outlet
E14- Chute Limit Switch	P14- N/A
E15- Autorinse MOV	P15- Autorinse to Drain
E16- N/A	
E17- Junction Enclosure	

Dimensions

Height: 101" (2566mm)	Equipment weight: 1660lbs
Length: 64" (1626mm) (Not including chute)	Operating weight: 1995lbs
Width: 61.5" (1563mm)	Crated weight: 1760lbs
	Crated volume: 128 cu. Ft.

Remote Pulping Unit

WIRING DIAGRAM



LEGEND

LS—LIMIT SWITCH
LT—PILOT LIGHT (L.E.D.)
MOV—MOTORIZED VALVE
M—MOTOR
PB—PUSHBUTTON
SOL—SOLENOID VALVE
SS—SELECTOR SWITCH
WLC—WATER LEVEL CONTROL

WIRE SIZING GUIDE		
DEVICE	WIRE SIZE	TYPE
CONTROL PANEL LOGIC (LIMIT SWITCH) (SOL VALVE, ETC.)	18 AWG	THW-75°C
5HP EXTRTR DRIVE MOTOR@ 208/230V	14 AWG	THW-75°C
10HP PUMP DRIVE MOTOR@ 208/230V	10 AWG	THW-75°C

USE NEXT SIZE AWG
FOR RUNS OVER 150 FEET
(46 METERS)

WIRE SIZING GUIDE		
DEVICE	WIRE SIZE	TYPE
CONTROL PANEL LOGIC (LIMIT SWITCH) (SOL VALVE, ETC.)	18 AWG	THW-75°C
5HP EXTRTR DRIVE MOTOR@ 460V	14 AWG	THW-75°C
10HP PUMP DRIVE MOTOR@ 460V	14 AWG	THW-75°C

USE NEXT SIZE AWG
FOR RUNS OVER 150 FEET
(46 METERS)

Other Utility Requirements

Fresh Hot Water- 4gpm @ 45 psig, 1/2" NPT (approximate usage 160 gallons/cycle)

Drain- 6" minimum floor sink, with stainless steel removable basket recommended