



729 Third Avenue
Dallas, TX 75226

HFW-2, -3, -4, -5, -6

Insulated Top Mount Hot Food Wells Thermostat Control Models

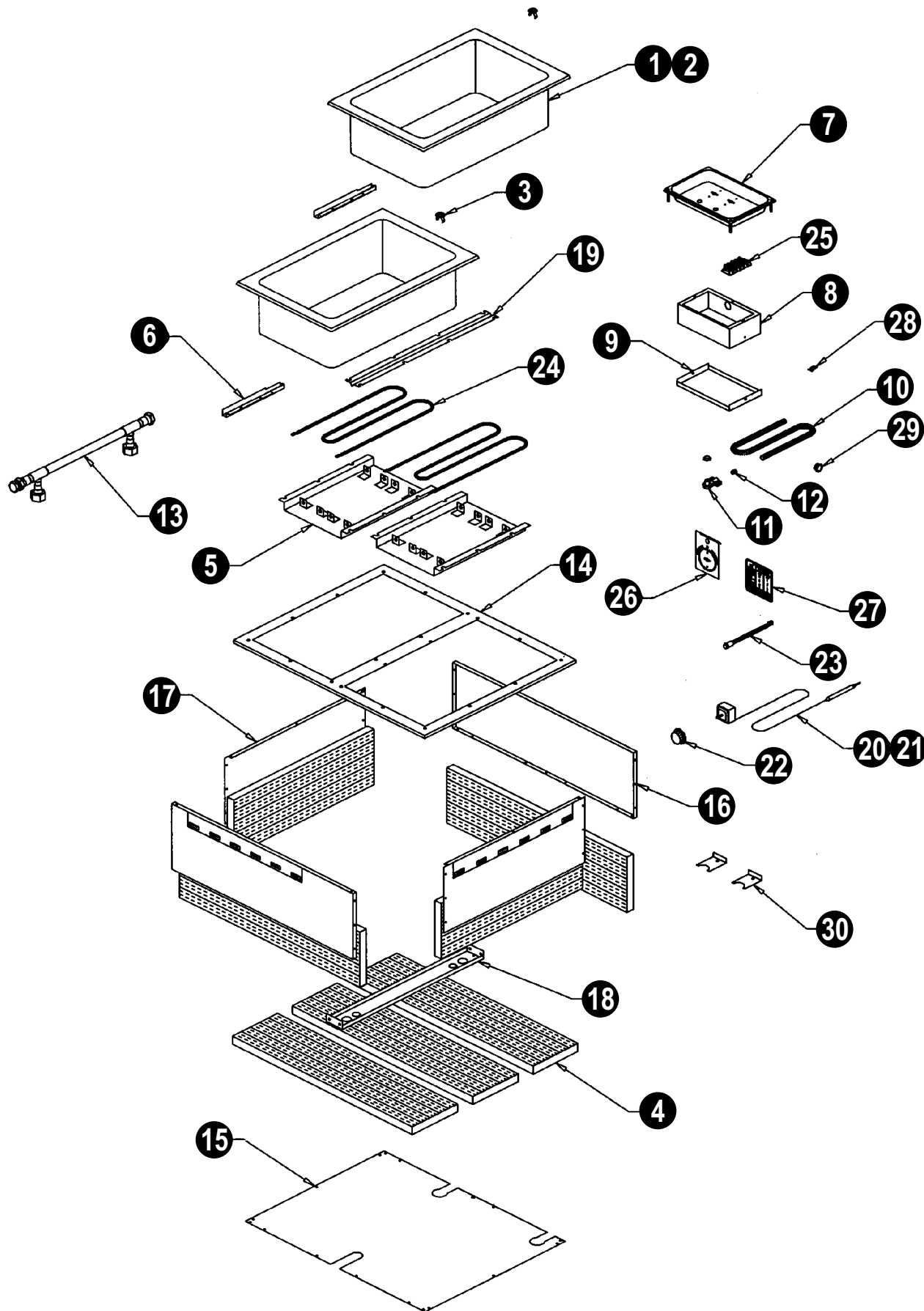
Phone: (214) 421-7366
 Fax: (214) 565-0976
 Toll Free: (800) 527-2100
 Website: www.apwwyott.com
 E-mail: info@apwwyott.com

Item	P/N	Description	Item	P/N	Description
1	55071	WELL PAN NO DRAIN	15D	56172	6 WELL BOTTOM COVER
2	56037	WELL PAN W/DRAIN	16	56180	2 WELL FRONT OR BACK COVER
3	56655	DRAIN STRAINER	16A	56177	3 WELL FRONT OR BACK COVER
4	60150	1" X 7" X 48" INSULATION	16B	56174	4 WELL FRONT OR BACK COVER
5	56506	REFLECTOR PAN	16C	56171	5 WELL FRONT OR BACK COVER
6	56039	CAPILLARY COVER F/T'STATS	16D	56170	6 WELL FRONT OR BACK COVER
7	55055	CONTROL RECESSED BEZEL	17	56050	END COVER - ALL
7A	56041	CONTROL RECESSED BEZEL	18	56048	CONDUIT BRACKET
8	55057	CONDUIT BOX	19	56067	WELL BRACE
8A	55063	CONDUIT BOX	20	56527	THERMOSTAT 36" CAPILLARY
9	55065	CONDUIT BOX COVER	21	56540	THERMOSTAT 72" CAPILLARY
9A	55066	CONDUIT BOX COVER	22	56505	KNOB, THERMOSTAT
10	55099	¾" CONDUIT 24" LONG	23	56530	INDICATOR LIGHT
11	55058	90° CONDUIT CONNECTOR	24	55441	ELEMENT 208/240V 1200/1600W
12	55059	ANTI-SHORT BUSHING		54051	ELEMENT 208V 1600W
13	56138	2 WELL DRAIN MANIFOLD ASSY	25	30201	TERMINAL BLOCK
13A	56147	3 WELL DRAIN MANIFOLD ASSY	26	56529	INCR./DECR. PLATE
13B	56148	4 WELL DRAIN MANIFOLD ASSY	27	56542	DIAL PLATE
13C	56149	5 WELL DRAIN MANIFOLD ASSY	28	89120	JIFFY CLIP
13D	56150	6 WELL DRAIN MANIFOLD ASSY	29	89184	7/8" HOLE BUSHING
14	56206	2 WELL TOP PLATE	30	55062	HOLE COVER
14A	56351	3 WELL TOP PLATE		89073	#8 X ½ SHT METAL SCREW
14B	56377	4 WELL TOP PLATE		88961	10-24 GREEN HEX NUT
14C	55023	5 WELL TOP PLATE		89061	10-24 HEX NUT
14D	56166	6 WELL TOP PLATE		89025	10-24 SPEED NUT
15	56181	2 WELL BOTTOM COVER		89071	#10 FLAT WASHER
15A	56178	3 WELL BOTTOM COVER		89059	#10 EXT. LOCKWASHER
15B	56175	4 WELL BOTTOM COVER		88993	10-32 X 3/8" TR. HD SCREW
15C	56173	5 WELL BOTTOM COVER		89068	¼" FLAT WASHER

Note: When ordering, ALWAYS specify Part #, Model #, Serial #, Voltage/Phase & type of Gas. Form #67133 Rev. 3/06

EXPLODED VIEW - THERMOSTAT CONTROL

HFW-2, -3, -4, -5, -6



Note: When ordering, ALWAYS specify Part #, Model #, Serial #, Voltage/Phase & type of Gas.

Form #67133 Rev. 3/06



729 Third Avenue
Dallas, TX 75226

HFW-2, -3, -4, -5, -6

**Insulated Top Mount Hot Food Wells
Infinite Control Models**

Phone: (214) 421-7366

Fax: (214) 565-0976

Toll Free: (800) 527-2100

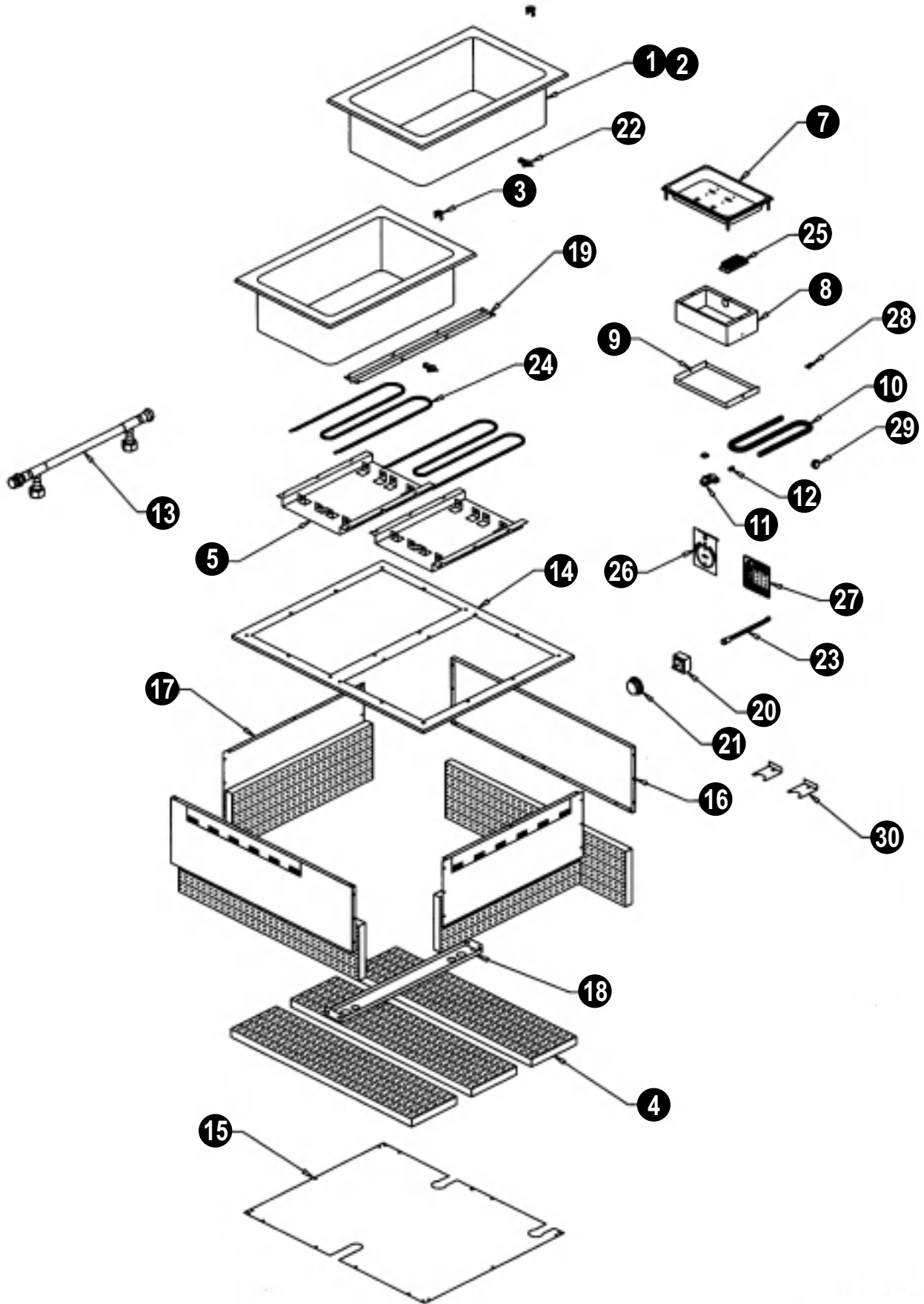
Website: www.apwwyott.com

E-mail: info@apwwyott.com

Item	P/N	Description	Item	P/N	Description
1	55071	WELL PAN NO DRAIN	15D	56172	6 WELL BOTTOM COVER
2	56037	WELL PAN W/DRAIN	16	56180	2 WELL FRONT OR BACK COVER
3	56655	DRAIN STRAINER	16A	56177	3 WELL FRONT OR BACK COVER
4	60150	1" X 7" X 48" INSULATION	16B	56174	4 WELL FRONT OR BACK COVER
5	56506	REFLECTOR PAN	16C	56171	5 WELL FRONT OR BACK COVER
6	—	—	16D	56170	6 WELL FRONT OR BACK COVER
7	55055	CONTROL RECESSED BEZEL	17	56050	END COVER - ALL
7A	56041	CONTROL RECESSED BEZEL	18	56048	CONDUIT BRACKET
8	55057	CONDUIT BOX	19	56067	WELL BRACE
8A	55063	CONDUIT BOX	20	87053-EGO	INFINITE CONTROL
9	55065	CONDUIT BOX COVER	21	55825	KNOB, INFINITE CONTROL
9A	55066	CONDUIT BOX COVER	22	69106	LIMITING THERMOSTAT
10	55099	¾" CONDUIT 24" LONG	23	56530	INDICATOR LIGHT
11	55058	90° CONDUIT CONNECTOR	24	55441	ELEMENT 208/240V 1200/1600W
12	55059	ANTI-SHORT BUSHING		54051	ELEMENT 208V 1600W
13	56138	2 WELL DRAIN MANIFOLD ASSY	25	30201	TERMINAL BLOCK
13A	56147	3 WELL DRAIN MANIFOLD ASSY	26	56529	INCR./DECR. PLATE
13B	56148	4 WELL DRAIN MANIFOLD ASSY	27	56542	DIAL PLATE
13C	56149	5 WELL DRAIN MANIFOLD ASSY	28	89120	JIFFY CLIP
13D	56150	6 WELL DRAIN MANIFOLD ASSY	29	89184	7/8" HOLE BUSHING
14	56206	2 WELL TOP PLATE	30	55062	HOLE COVER
14A	56351	3 WELL TOP PLATE		89073	#8 X ½ SHT METAL SCREW
14B	56377	4 WELL TOP PLATE		88961	10-24 GREEN HEX NUT
14C	55023	5 WELL TOP PLATE		89061	10-24 HEX NUT
14D	56166	6 WELL TOP PLATE		89025	10-24 SPEED NUT
15	56181	2 WELL BOTTOM COVER		89071	#10 FLAT WASHER
15A	56178	3 WELL BOTTOM COVER		89059	#10 EXT. LOCKWASHER
15B	56175	4 WELL BOTTOM COVER		88993	10-32 X 3/8" TR. HD SCREW
15C	56173	5 WELL BOTTOM COVER		89068	¼" FLAT WASHER

Note: When ordering, ALWAYS specify Part #, Model #, Serial #, Voltage/Phase & type of Gas.

Form #67132 Rev. 3/06



Note: When ordering, ALWAYS specify Part #, Model #, Serial #, Voltage/Phase & type of Gas.

Form #67132 Rev. 3/06