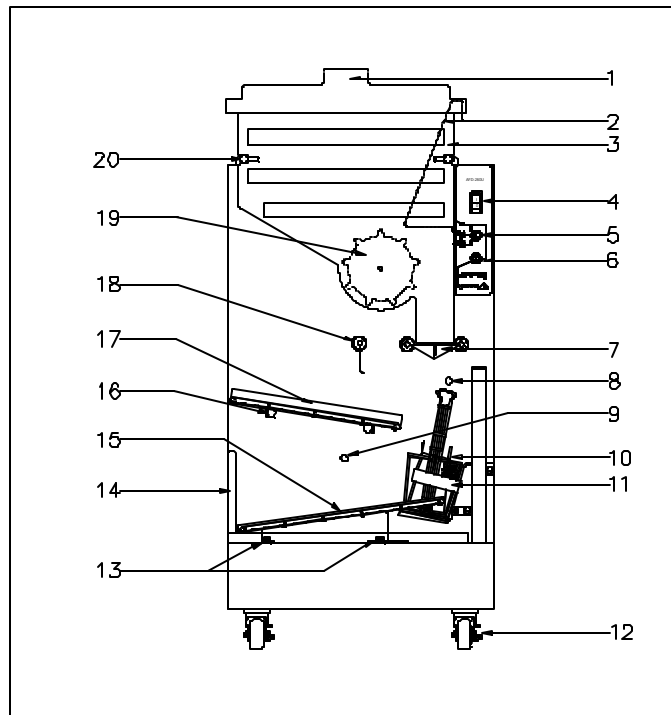


AFD-280U Parts List

Major Assemblies, AFD-280U

AFD-280U Front View

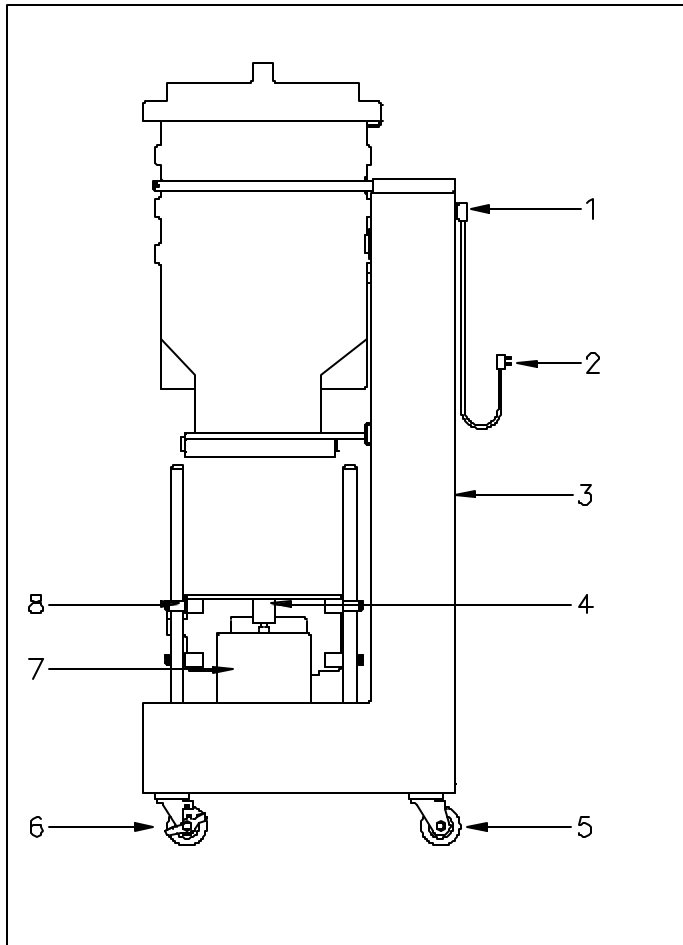


AFD-280U Front View





ITEM	P/N	DESCRIPTION	NO.	FUNCTION
1	202364	Hopper Lid	1	Cover for the Fry Hopper.
2	219129	Fry Diverter	1	Funnels fries to the Accumulator Doors area.
3	202368	Hopper	1	Holds frozen fries for dispensing into baskets.
4	202381	On / Off Switch with circuit breaker	1	On / Off Switch and A.C. circuit breaker.
5	215607	Selector Switch	1	Selects fry load sizes and Dispenser operation.
6	215606 216489 290771	Start / Reset Push-button Switch Bulb Only Button Lens Only	1 1 1	Starts single basket cycle and resets system error.
7	---	Accumulator Doors Assembly	--	<i>See assembly illustration.</i>
8	202038	Lift Optical Sensor	1	Senses baskets in the Saddle when the Lift is raised.
9	202038 202619	Guide Optical Sensor Window Replacement Kit	1 1	Senses baskets exiting the Lift and on Lower Guide. Kit to replace both sensor windows
10	216258	Fry Basket	10	Receives fries from Dispenser.
11	202782	Saddle Assembly	1	<i>See assembly illustration</i>
12	216596	Front Casters with Brakes	2	Allows moving the Dispenser for cleaning & locking position.
13	290687	Locator Pin	2	Holds Drip Pan and Lower Guide in place
14	202780	Drip Pan	1	Collects shortening and other waste materials.
15	202779 220494 290000	Lower Guide Assembly Lower Guide Ultem Runners Runner Mounting Screws	1 2 12	Complete Lower Guide Assembly. Basket slide rails. Runner mounting screws. (6 screws per Ultem)
16	202218	Upper Guide Support Bars	2	Secures the Upper Guide in the proper orientation.
17	202219 202044 202359 290000	Upper Guide Assembly (offset pin) Fillister Screw Upper Guide Ultem Runners Runner Mounting Screws	1 2 2 10	Complete Upper Guide assembly. Locates Upper Guide Position. (offset Guide) Basket slide rails. Runner mounting screws. (5 screws per Ultem)
18	----	Stopgate Assembly	--	<i>See assembly illustration</i>
19	202366	Drum	1	Dispenses fries to the Accumulator Door area.
20	202884 202885 290533	Hopper Support Bar, left Hopper Support Bar, right Hopper Support Bar Screws	1 1 4	Holds the Hopper in proper orientation.

AFD-280U Parts List

AFD-280U Side View



Rear Access Door hardware Item #3

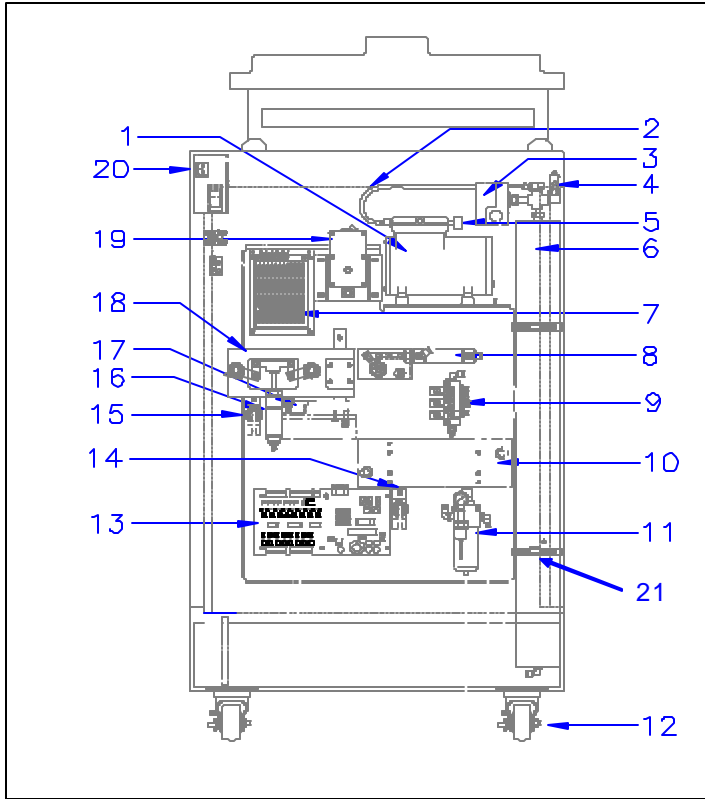
Item	Description	Part Number	Qty
	U-Clip (mounts on dispenser)	202892	2
	Retaining Washer (holds 202585 in place)	202539	2
	Machine screw 10-32 x 1"	202585	2
	Pocket Pull door handle	202523	2

AFD-280U Side View

ITEM	P/N	DESCRIPTION	NO.	FUNCTION
1	202881	Power Cord Inlet	1	Connector for Power Cord.
2	203425 202946 202942 202950	Inlet Power Cord, USA, Japan Inlet Power Cord, European Inlet Power Cord, Great Britain Inlet Power Cord, Australia	1	Provides electrical power from wall outlet. Plugs into power cord inlet.
2	202172 202790 202354	Hard-wired Power Cord, USA, Japan Hard-wired Power Cord, European Hard-wired Power Cord, Australia	1	Provides electrical power form wall outlet. Hard-wired power cords.
2	290311 290308 290312	Kit, Power Cord, USA, Japan Kit, Power Cord, European Kit, Power Cord, Australia		Power cord kit that converts from power cord inlet to hard-wired power cords. For more information see replacement part procedures at http://www.schwanstech-aed.com
3	202890 202523 202585 202539 202892	Back panel Handles Screws Retainer (Plastic) Nut (U-clip)	1 2 2 2 2	Removable cover for internal access. Hand holds for Back Panel Secures the Back Panel to the machine Holds screws to Back Panel Attachment point for screws
4	202518	Lift Cylinder Cap, Adjustable	1	Attaches to Lift Cylinder Shaft, contacts the Saddle.
5	216595	Rear Caster	1	Allows Dispenser movement for cleaning.
6	216596	Front Caster with brake.	1	Allows Dispenser movement, locks position.
7	202513 220497	Lift Cylinder Cover Lift Cylinder Cover Nut	1 1	Lift Cylinder protective cover. Secures the Lift Cylinder Cover.
8	202782	Lift Saddle Assembly	1	Carries baskets from the Upper to the Lower Guide.

AFD-280U Parts List

AFD-280U Rear View

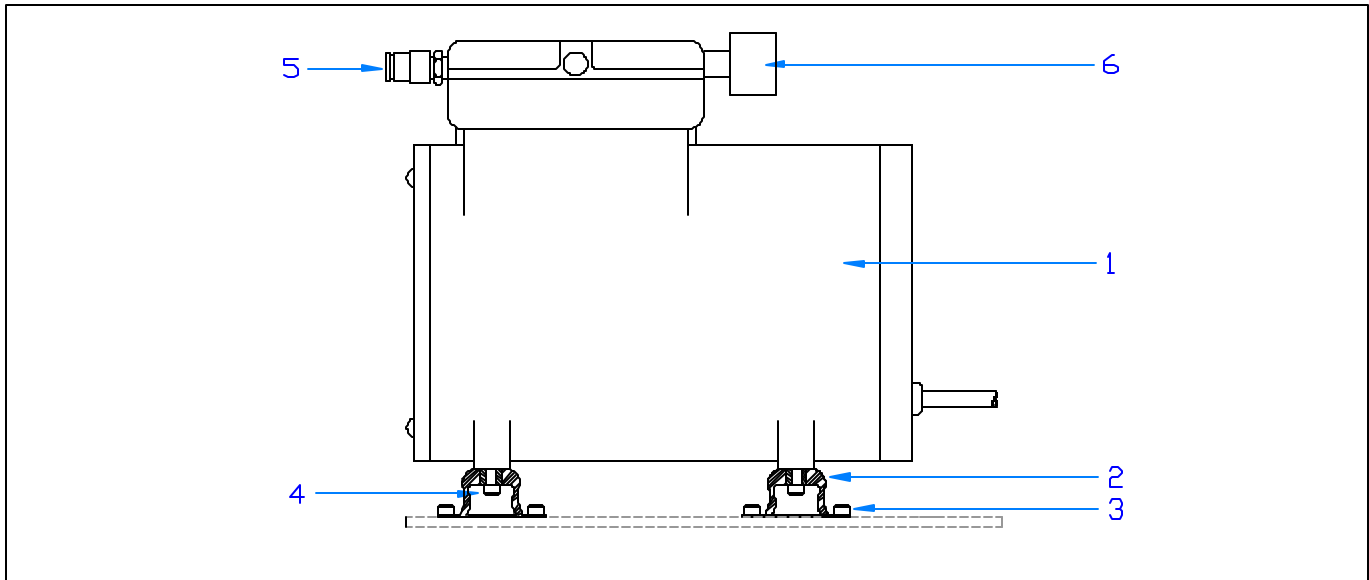


AFD-280U Rear View

ITEM	P/N	DESCRIPTION	NO.	FUNCTION
1	202061 202190 202766 202765	Air Compressor, Ramped Valve, 110V/60Hz Air Compressor, Ramped Valve, 220V/50Hz Air Compressor, Ramped Valve, 220V/60Hz Air Compressor, Ramped Valve, 110V/50-60Hz	1	Compressed air source for Dispenser operations.
2	202878	Airline, 1/4" x 24"	24"	Connects Compressor to Air Reservoir.
3	202196	Compressor Control Switch	1	Controls Compressor, On at 40 psi, Off at 60 psi.
4	202197	Pressure Relief Valve	1	Over pressure safety valve for Air Reservoir.
5	202199 202614	Air Inlet Filter Filter Media only	1 1	Filters air entering the Air Compressor. Replaceable filter media.
6	202861	Air Reservoir Assembly	--	See assembly illustration
7	202793	Power Supply, 24.5 VDC	1	Provides D.C. power for Dispenser operations.
8	202900	Stopgate Assembly	--	See assembly illustration
9	202582	Manifold Assembly	--	See assembly illustration
10	-----	Upper Guide Support Assembly	--	See assembly illustration
11	202051	Air Regulator Assembly	--	See assembly illustration
12	216595	Rear Casters	2	Allows Dispenser movement for cleaning.
13	290626 290063	Plus Controller Board E-prom	1 1	Controls Dispenser electrical functions. Programs the controller board.
14	202038	Lower Guide Optical Sensor	1	Senses baskets exiting the Lift and when the Lower Guide is full.
15	202038	Lift Optical Sensor	1	Senses baskets in the Saddle when the Lift is raised.
16	202057	Accumulator Doors Air Cylinder	1	Pneumatic actuator for the Accumulator Doors.
17	290685	Load Cell	1	Senses the weight of the fries.
18	-----	Accumulator Door Carriage Assembly	--	See assembly illustration
19	-----	Drum Motor Assembly	--	See assembly illustration
20	202881	Power Cord Inlet	1	Connects the Dispenser to the wall outlet power.
21	202062	Air Reservoir Mounting Straps	2	Secures Air Reservoir to chassis.

AFD-280U Parts List

AFD-280U Compressor Assembly

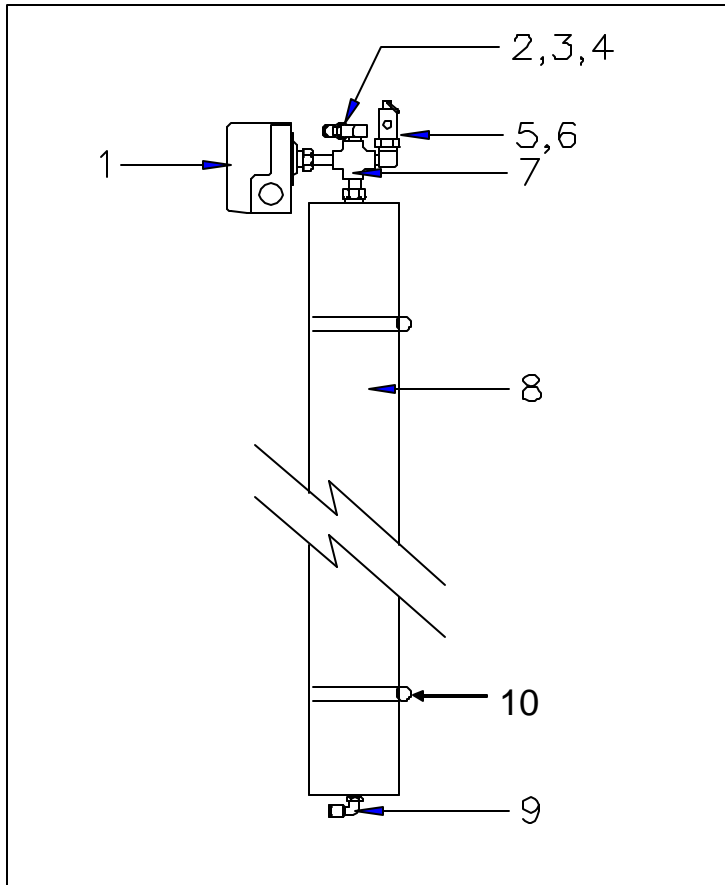


AFD-280U Compressor Assembly

ITEM	P/N	DESCRIPTION	NO.	DETAILS
1	202061	Air Compressor, 110 VAC, 60 Hz	1	Provides compressed air for Dispenser pneumatic system.
	202765	Air Compressor, 100 VAC, 50-60 Hz	1	
	202190	Air Compressor, 220 VAC, 50 Hz	1	
	202766	Air Compressor, 220 VAC, 60 Hz	1	
2	202857	Bubble Shock Mount	4	Provides vibration isolation.
3	202858	Socket head cap screw, 8-32 X 1/4"	8	Secures Shock Mounts to Dispenser chassis.
4	213509	Socket head cap screw, 8-32 X 1/2"	4	Secures Shock Mount to Compressor
	213432	Lock Washer, #8	4	Lock washer for cap screw.
5	215465	Push fitting, 1/4" tube - 1/4 NPT	1	Attaches 1/4" airline to the Air Compressor.
6	202199	Air Filter Assembly with Filter Media	1	Filters air entering the Air Compressor.
	219262	Filter Media only	1	Replaceable filter media.

AFD-280U Parts List

AFD-280U Air Reservoir Assembly

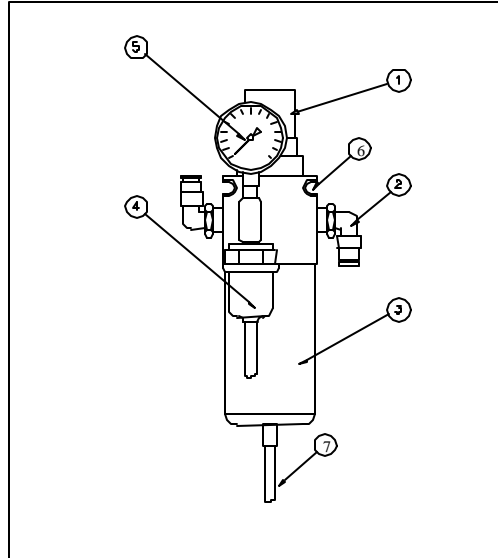


AFD-280U Air Reservoir Assembly

ITEM	P/N	DESCRIPTION	Number	DETAILS
---	202861	Air Reservoir Assembly		Stores Compressed Air for Dispenser Operations.
1	202196	Pressure Control Switch		<i>Part of Air Reservoir Assembly</i> Set for On at 40 psi (2.8 Bar) Off at 60 psi (4.1 Bar).
2	215465	¼" Push Tube Fitting		<i>Part of Air Reservoir Assembly</i>
3	202243	Check Valve		<i>Part of Air Reservoir Assembly</i>
4	291321	90° Elbow		<i>Part of Air Reservoir Assembly</i>
5	202197	Pressure Relief Valve		<i>Part of Air Reservoir Assembly</i>
6	291321	90° Elbow		<i>Part of Air Reservoir Assembly</i>
7	291324	Branch T Fitting		<i>Part of Air Reservoir Assembly</i>
8	----	Pressure Tank		<i>Part of Air Reservoir Assembly</i>
9	213477	90°, ¼" Push Tube Fitting		<i>Part of Air Reservoir Assembly</i>
10	202062	Mounting Straps	2	Secures Air Reservoir to the chassis.

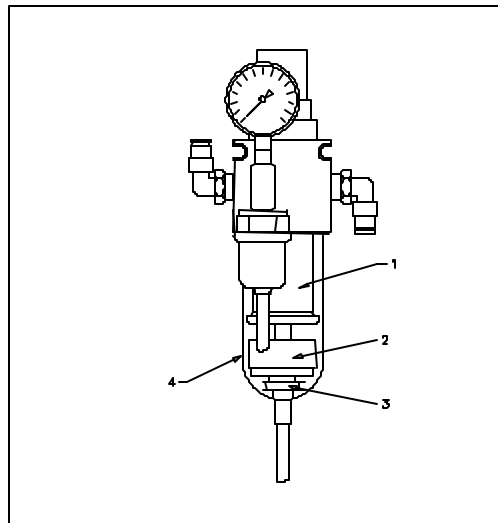
AFD-280U Parts List

AFD-280U Air Pressure Regulator Assembly



AFD-280U Air Pressure Regulator Assembly, p/n 202051

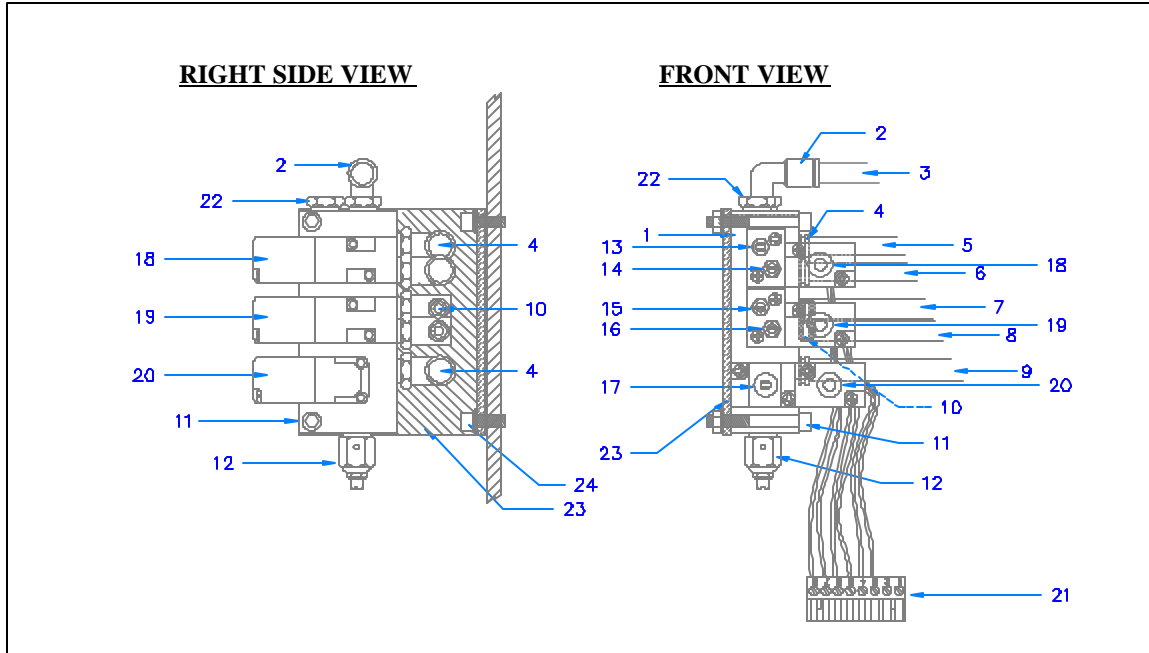
ITEM	P/N	DESCRIPTION	NO.	DETAILS
1	---	Pressure control knob.	--	Pull up to unlock, turn to increase or decrease system pressure. Set for 30 psi. <i>Part of Pressure Regulator Assembly</i>
2	213477	Airline fitting, 90° ¼" Push Tube	2	Airline Connection.
3	---	Filter Bowl Cover Shield.	--	Safety cover for the Filter Bowl. <i>Part of Pressure Regulator Assembly.</i>
4	202604	Air Present Switch	1	Senses system operating pressure, adjusted for 20 psi On.
5	202606	Air Pressure Gauge	1	Indicates regulator pressure setting.
6	213372	Regulator Mounting Screws	2	Secures the regulator to the back panel.
7	202480	Drain Line, 5/16" x 10"	10"	Water drain line.
----	202051	Pressure Regulator Assembly	1	Complete Filter Regulator assembly.



ITEM	P/N	DESCRIPTION	NO.	DETAILS
1	202614	Filter Media Replacement Kit	1	Removes contaminants from system air pressure.
2	---	Float Valve	--	<i>Part of Pressure Regulator Assembly.</i>
3	---	Drain Filter	--	<i>Part of Pressure Regulator Assembly.</i>
4	202245	Water Trap Bowl and Drain Fitting	1	Collects and drains moisture from system air pressure.
---	202051	Pressure Regulator Assembly	1	Complete Filter Regulator assembly.

AFD-280U Parts List

AFD-280U Manifold Assembly “Style A”

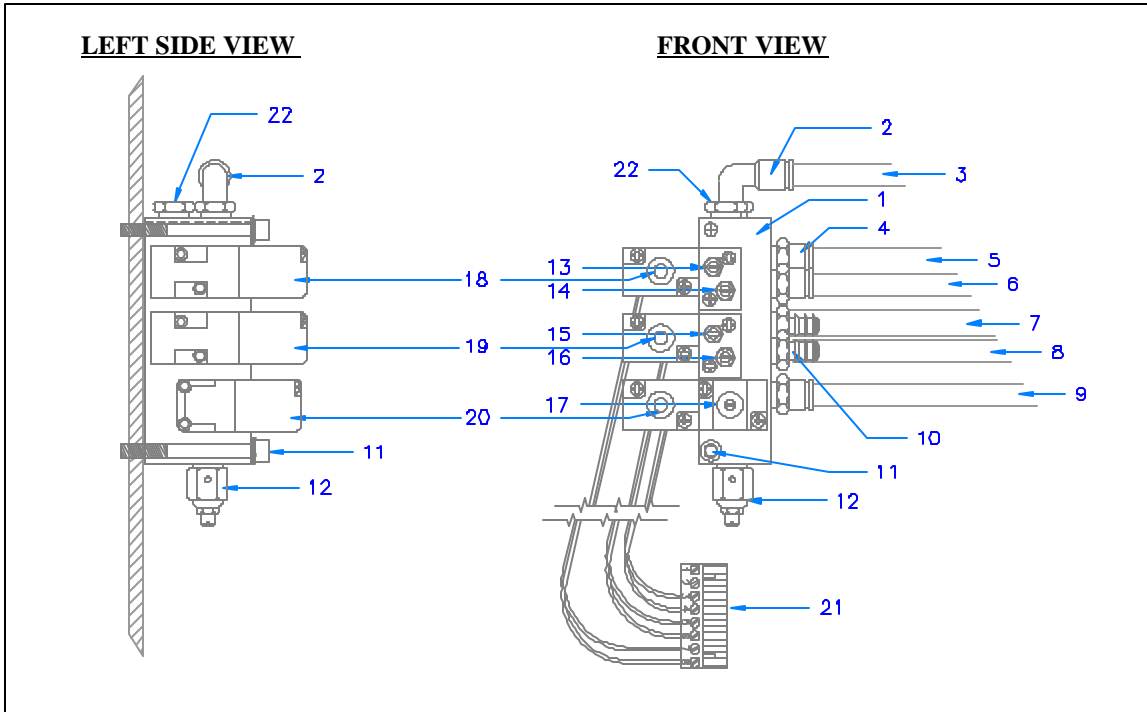


AFD-280U Manifold Assembly “Style A”, p/n 202054 (replace with p/n 202582)

ITEM	P/N	DESCRIPTION	NO.	DETAILS
1	202582	Pneumatic Manifold Assembly	1	Distributes airflow to pneumatic cylinders.
2	213318	Airline Fitting, 90°, 1/4” Push Tube	1	Airline connection.
3	202572	Manifold Compressed Air Input	1	GREEN Airline from the Pressure Regulator.
4	213318	Airline Fitting, 90°, 1/4” Push Tube	3	Airline connection.
5	202479	Manifold Output, OPEN Stopgate	1	BLUE Airline to bottom Stopgate Cylinder fitting.
6	202478	Manifold Output, CLOSE Stopgate	1	RED Airline to top Stopgate Cylinder fitting.
7	202481	Manifold Output, OPEN Accumulator Doors	1	CLEAR airline to top Accumulator Cylinder fitting.
8	202573	Manifold Output, CLOSE Accumulator Doors	1	YELLOW airline to bottom Accumulator Cylinder fitting.
9	213320	Manifold Output, RAISE Lift Cylinder	1	OPAQUE airline to fitting at bottom of Lift Cylinder.
10	203282	Airline Fitting, 1/4” OD-Barbed	2	Airline connection.
11	213518	Allen Head Cap Screws, 10-32 X 1 1/2”	2	Secures Manifold Assembly to Mounting Bracket (23).
12	203294	Airflow adjustment, Lift Cylinder DOWN	1	Controls the DOWN SPEED of the Lift Cylinder.
13	202090	Airflow Adjustment, Stopgate OPEN “B”	1	Controls the OPENING SPEED of the Stopgate Cylinder.
14	202090	Airflow Adjustment, Stopgate CLOSE “A”	1	Controls CLOSING SPEED of the Stopgate Cylinder.
15	202090	Airflow Adjustment, Accumulator OPEN “B”	1	Controls the OPENING SPEED of the Accumulator Doors.
16	202090	Airflow Adjustment, Accumulator CLOSE “A”	1	Controls the CLOSING SPEED of the Accumulator Doors.
17	202021	Airflow Adjustment, Lift Cylinder UP speed	1	Controls the UP SPEED of the Lift Cylinder.
18	219010	Manifold Solenoid & manual activator.	1	Switches the Stopgate airflow for OPEN & CLOSE.
19	219010	Manifold Solenoid & manual activator.	1	Switches the Accumulator Doors airflow for OPEN & CLOSE.
20	219009	Manifold Solenoid & manual activator.	1	Opens airflow to the Lift Cylinder to raise UP. Lift Cylinder DOWN is controlled by (12).
21	215468	Electrical Connector, 8 position.	1	Connects Solenoid Wiring to the Controller Board Outputs.
22	202242	Manifold Vent	1	Exhausts manifold intermittent air pressures.
23	----	Manifold Mounting Bracket	1	Mounting for the Manifold Assembly
24	213143	Allen Head Cap Screws	2	Secures Mounting Bracket to Dispenser chassis.
	213142	Star Washers	2	

AFD-280U Parts List

AFD-280U Manifold Assembly “Style B”

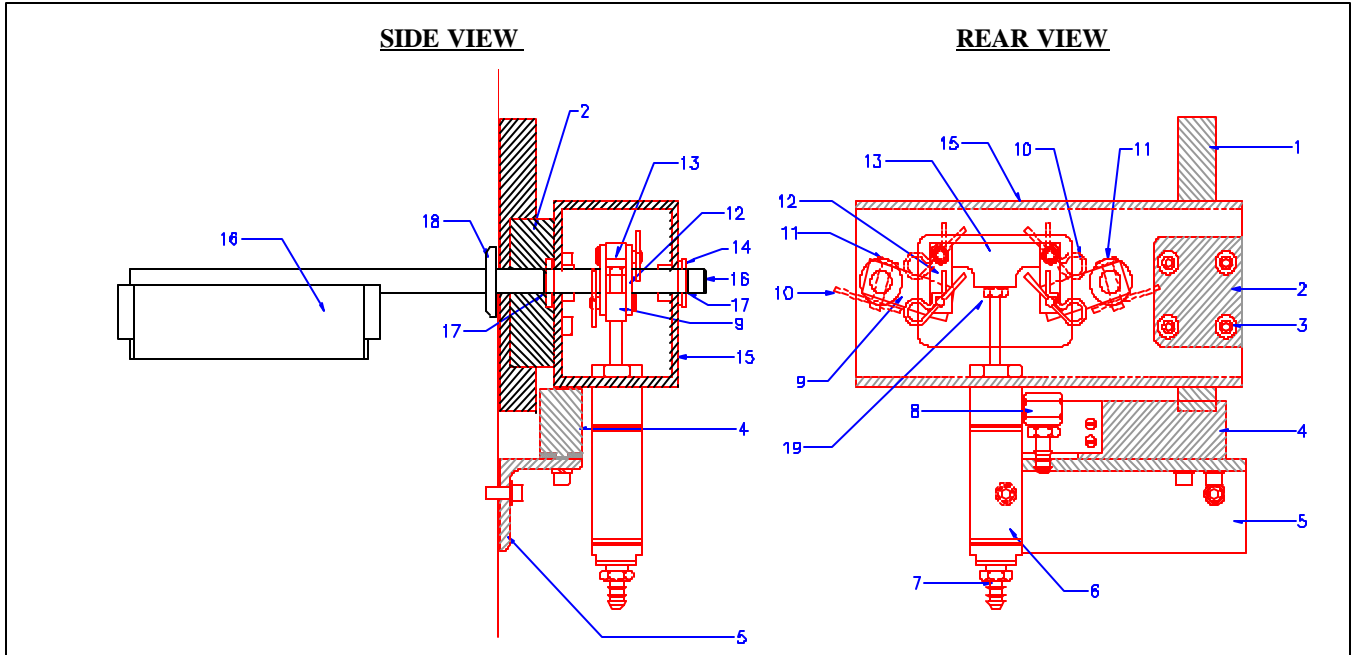


AFD-280U Manifolds Assembly “Style B”, p/n 202582)

ITEM	P/N	DESCRIPTION	NO.	DETAILS
1	202582	Pneumatic Manifold Assembly	1	Distributes airflow to pneumatic cylinders.
2	213318	Airline Fitting, 90°, 1/4" Push Tube	1	Airline connection.
3	202572	Manifold Compressed Air Input	1	GREEN Airline from the Pressure Regulator.
4	213369	Airline Fitting, Straight, 1/4" Push Tube	3	Airline connection.
5	202479	Manifold Output, OPEN Stopgate	1	BLUE Airline to bottom Stopgate Cylinder fitting.
6	202478	Manifold Output, CLOSE Stopgate	1	RED Airline to top Stopgate Cylinder fitting.
7	202481	Manifold Output, OPEN Accumulator Doors	1	CLEAR airline to top Accumulator Cylinder fitting.
8	202573	Manifold Output, CLOSE Accumulator Doors	1	YELLOW airline to bottom Accumulator Cylinder fitting.
9	213320	Manifold Output, RAISE Lift Cylinder	1	OPAQUE airline to fitting at bottom of Lift Cylinder.
10	203282	Airline Fitting, 1/4"-Barbed	2	Airline connection.
11	213372	Allen Head Cap Screws, 10-32 X 2"	2	Secures Manifold Assembly to Mounting Bracket (23).
12	203294	Airflow adjustment, Lift Cylinder DOWN	1	Controls the DOWN SPEED of the Lift Cylinder.
13	202090	Airflow Adjustment, Stopgate CLOSE "A"	1	Controls CLOSING SPEED of the Stopgate Cylinder.
14	202090	Airflow Adjustment, Stopgate OPEN "B"	1	Controls the OPENING SPEED of the Stopgate Cylinder.
15	202090	Airflow Adjustment, Accumulator CLOSE "A"	1	Controls the CLOSING SPEED of the Accumulator Doors.
16	202090	Airflow Adjustment, Accumulator OPEN "B"	1	Controls the OPENING SPEED of the Accumulator Doors.
17	202021	Airflow Adjustment, Lift Cylinder UP speed	1	Controls the UP SPEED of the Lift Cylinder.
18	219010	Manifold Solenoid & manual activator.	1	Switches the Stopgate airflow for OPEN & CLOSE.
19	219010	Manifold Solenoid & manual activator.	1	Switches the Accumulator Doors airflow for OPEN & CLOSE.
20	219009	Manifold Solenoid & manual activator.	1	Opens airflow to the Lift Cylinder to raise UP. Lift Cylinder DOWN is controlled by (12).
21	215468	Electrical Connector, 8 position.	1	Connects Solenoid Wiring to the Controller Board Outputs.
22	202242	Manifold Vent	1	Exhausts manifold intermittent air pressures.

AFD-280U Parts List

AFD-280U Accumulator Doors / Load Cell Assembly

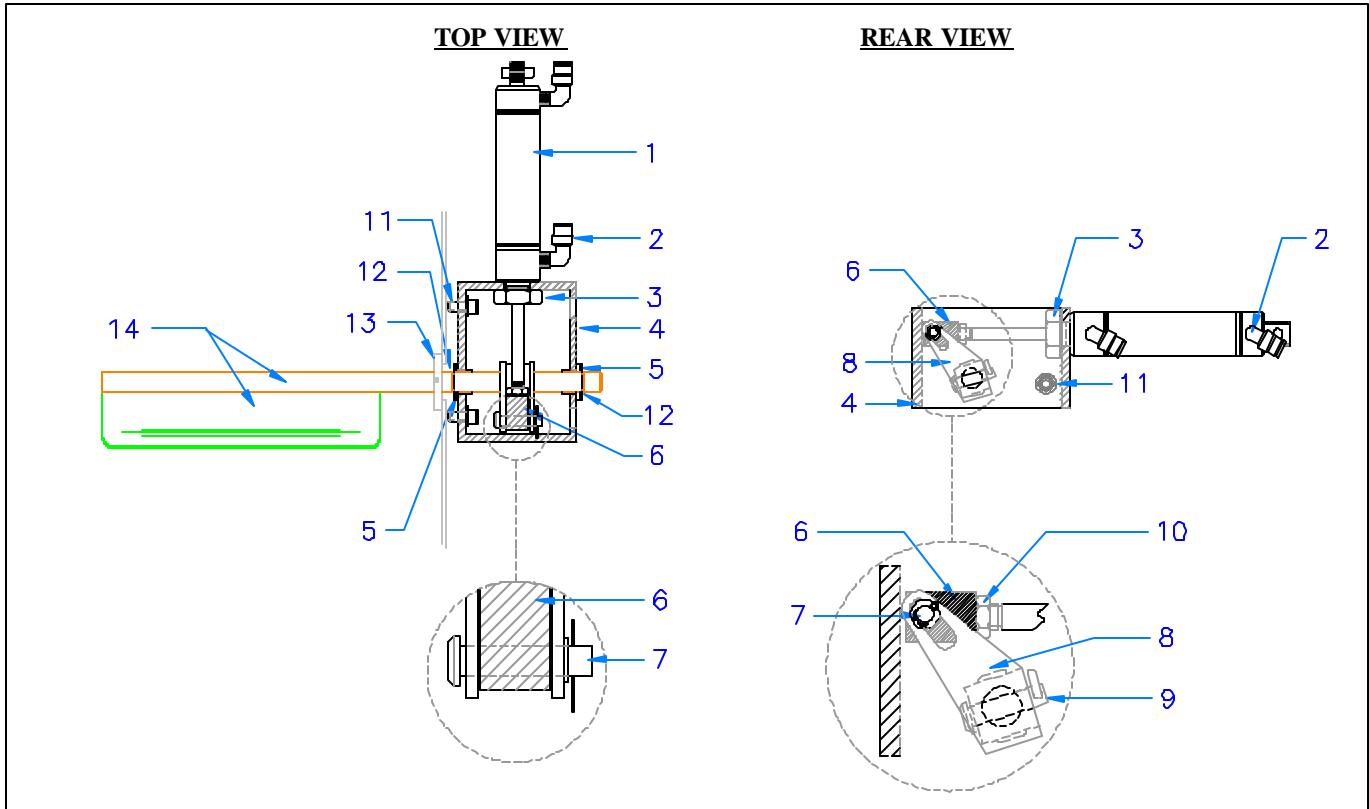


Accumulator Doors / Load Cell Assembly

ITEM	P/N	DESCRIPTION	No.	DETAIL
1	202068	Slide Rail	1	Allows Accumulator Assembly Motion / Sensing
2		Slide Rail Mount		Attaches Accumulator Assembly to Slide Rail
3	203097	Slide Rail Mounting Bolts	4	M6-1.0 x 16
	213142	Lock Washers	4	Zinc Plated
4	290685	Load Cell	1	Detects Weight of French Fries
	213143	Bolts	2	¼-20 X ½"
	213142	Lock Washers	2	¼" Zinc Plated
5	202908	Load Cell Mounting Bracket	1	Secures Load Cell to Chassis
	213143	Bolts	2	¼-20 X ½"
	213142	Lock Washers	2	¼" Zinc Plated
6	202057	Accumulator Doors Cylinder	1	Pneumatically Operates the Accumulator Doors
7	203282	Straight Barbed Fitting	1	1/8" NPT Barbed Airline Fitting
8		90° Barbed Fitting Assembly:		
	203283	- 90° Elbow	1	1/8" NPT to 10-32 UNC 90° Fitting
	203290	- Barbed Fitting	1	10-32 UNC Barbed Airline Fitting
9	220464	Door Shaft Link	2	Actuator Linkage Connection Secured to the Door Shaft
10	202081	Hairpin Clip	6	Secures Clevis Pins
11	202082	Clevis Pin, ¼ X 1"	6	Secures Linkages
12	220463	Connector Link	4	Actuator Linkage Interconnection Link
13	220462	Center Link	1	Linkage attached to Pneumatic Cylinder
14	202974	Flange Bearing	4	Bearing for Accumulator Door Shafts
	202975	Nylon Washer	4	Flange Bearing Spacer
15	202898	Machined Chassis Extrusion	1	Machined Accumulator Chassis
16	220480	Accumulator Door Weldment, Left	1	Accumulator Door and Shaft
17	213356	E-Clip	2	Secures Accumulator Door Shaft within Accumulator Assembly
<i>not shown</i>	220475	Accumulator Door Weldment, Right	1	Accumulator Door and Shaft
	213356	E-Clip	2	Secures Accumulator Door Shaft within Accumulator Assembly
18	220499	Shaft Collar, 1 per shaft	2	Protects inner Dispenser cabinet from contamination.
	202214	Shaft Collar Set Screw, 8-32 X ½"	2	Secures Shaft Collar to shaft.
19	202901	Cylinder Shaft Jam Nut, 5/8" X ½"	1	Locks Cylinder Shaft adjustment.

AFD-280U Parts List

AFD-280U Stopgate Assembly

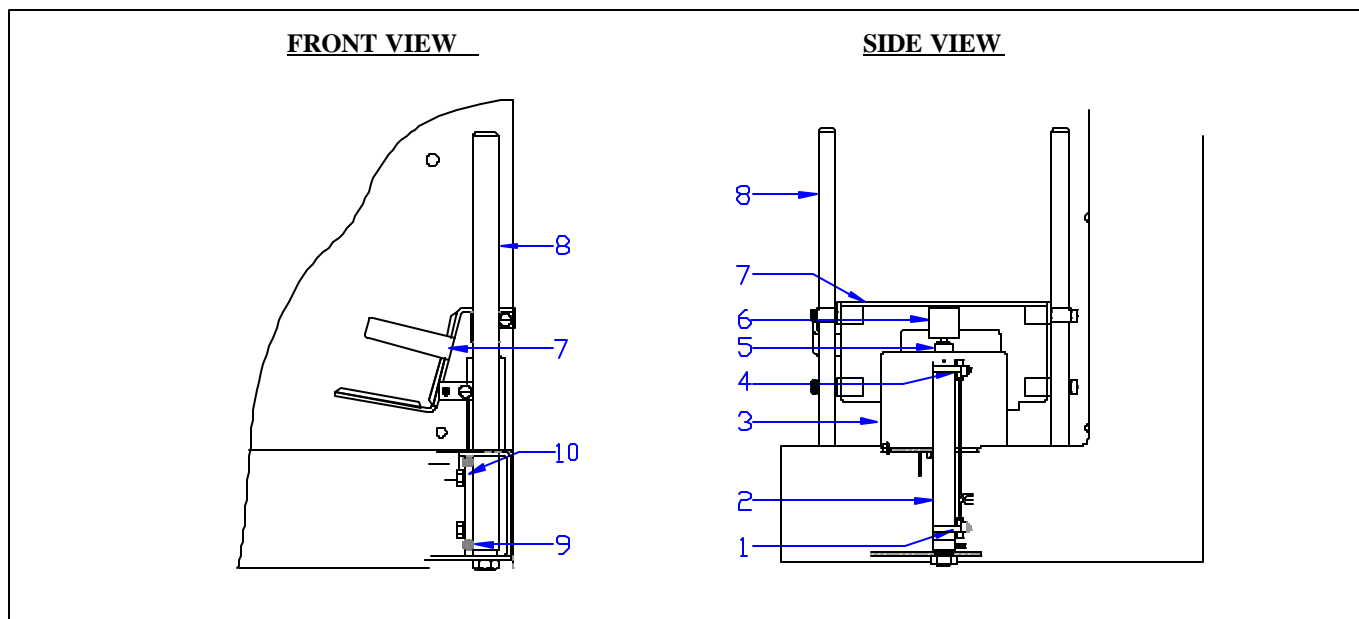


Stopgate Assembly

ITEM	P/N	DESCRIPTION	NO.	DETAILS
1	202902	Air Cylinder Assembly (<i>Items 1 & 2</i>)	1	Pneumatic actuator for the Stopgate.
2	213318	¼" Push Tube Fitting, 90° elbow	2	Airline connection.
3	202901	Air Cylinder Jam Nut	1	Secures Air Cylinder to Chassis.
4	202864	Machined Chassis Extrusion	1	Chassis machined from extrusion.
5	202974	Flange Bearing	2	Bearing for Stopgate shaft.
	202975	Washer	2	Spacer.
6	203000	Air Cylinder Shaft End Block	1	Connects Air Cylinder to Stopgate Linkage.
7	202082	Clevis Pin	1	Secures Linkage to End Block.
	203092	Cotter Pin	1	
	203093	Flat Washer	1	
8	203090	Stopgate Actuator Linkage	1	Linkage attached to Stopgate shaft.
7 & 8	290676	Kit, Stopgate Linkage		Stopgate linkage repair kit.
9	202082	Clevis Pin	1	Secures Linkage to Stopgate shaft.
	202081	Hairpin Clip	1	
10	202901	Cylinder Shaft Jam Nut,	1	Secures and adjusts Air Cylinder shaft to End Block.
11	213145	Socket Head Cap Screw, ¼-20 X 5/8	2	Secures Stopgate Chassis Assembly to the Dispenser panel.
	213142	Lock Washer, ¼"	2	
12	213356	E-Clip	2	Secures Stopgate shaft to assembly.
13	220499	Shaft Collar	1	Protect Dispenser inside from contaminants.
	202214	Shaft Collar Set Screw	1	Secure Shaft Collar to Shaft.
14	220505	Stopgate Weldment	1	Stopgate welded assembly.

AFD-280U Parts List

AFD-280U Lift Cylinder Assembly

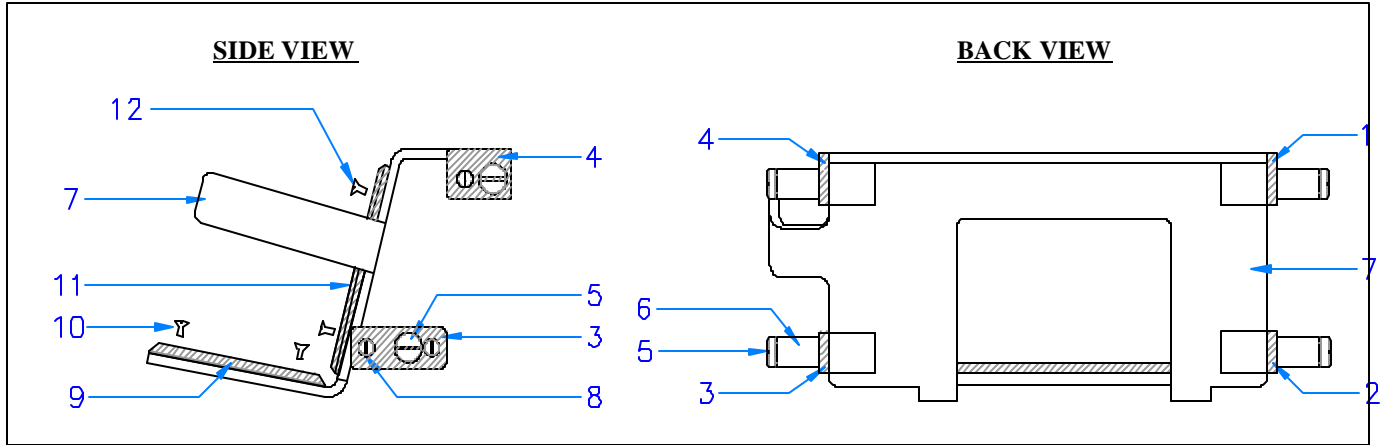


Lift Cylinder Assembly

ITEM	PART NUMBER	DESCRIPTION	NO.	DETAILS
1	202194	Lift Cylinder Down Switch	1	Detects when the Lift Cylinder is down.
	202516	Switch Mounting Strap	1	Secures the Lift Switch
2	202055	Lift Cylinder	1	Pneumatic Actuator for the Lift Saddle
	202517	Jam Nut, 3/4-16 UNC	1	Secures the Cylinder to the chassis.
	213369	Airline Fitting, 1/8" NPT M X 1/4"OD	1	Airline connection.
3	202194	Lift Cylinder Up Switch	1	Detects when the Lift Cylinder is up.
	202516	Switch Mounting Strap	1	Secures the Lift Switch
4	202513	Lift Cylinder Shield	1	Protective cover for the Lift Cylinder.
5	220497	Shield Nut	1	Secures the Lift Cylinder Shield.
6	202518	Lift Cylinder Cap	1	Attaches to Lift Cylinder Shaft, contacts Lift Saddle.
7	202782	Lift Saddle Assembly	1	Transports the baskets to the Lower Guide.
8	220456	Saddle Post	2	Guides the Lift Saddle
9	202293	Saddle Post Set Screw, 1/2 X 1/2"	4	Saddle Post alignment adjustment.
10	202174	Bolt, 1/2-13 X 1 1/4"	4	Secures the Saddle Post to the chassis.
	213264	Washer, 1/2"	4	

AFD-280U Parts List

AFD-280U Saddle Assembly

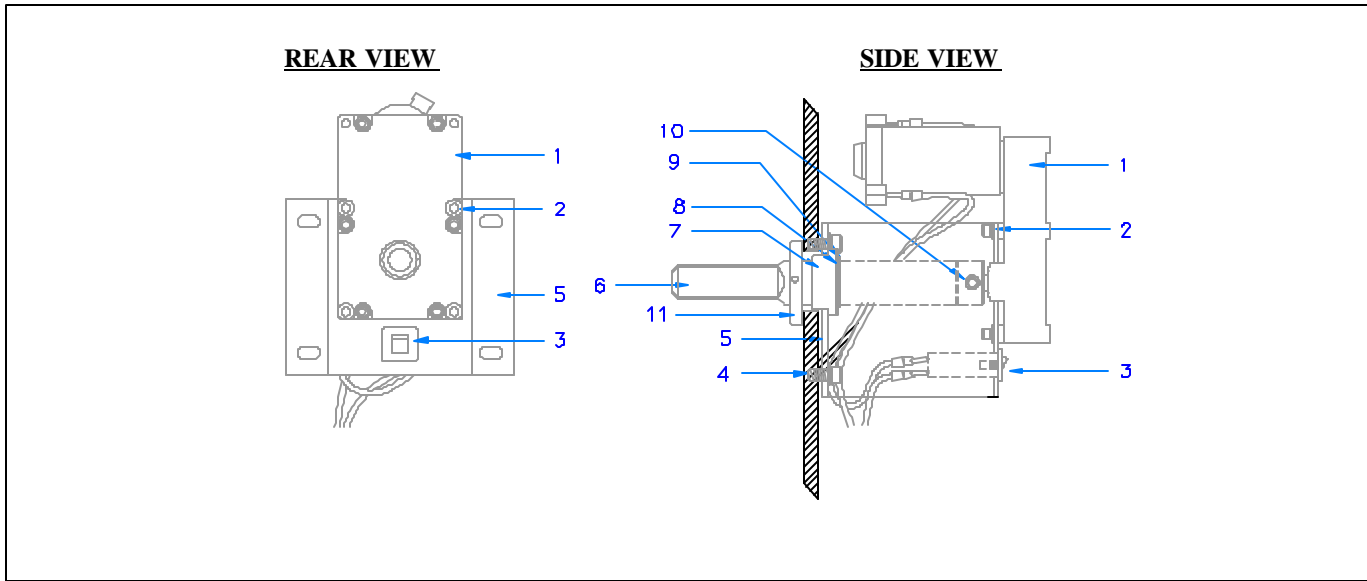


Saddle Assembly p/n 202782

ITEM	P/N	DESCRIPTION	NO.	DETAILS
1	220468	Right Upper Wear Strip	1	Wear surface against the Guide Post.
2	220469	Right Lower Wear Strip	1	Wear surface against the Guide Post.
3	220469	Left Lower Wear Strip	1	Wear surface against the Guide Post.
4	220467	Left Upper Wear Strip	1	Wear surface against the Guide Post.
5	202064	Shoulder Bolt	4	Secures Guide Rollers to Saddle Assembly. Stainless Steel.
6	217810	Guide Roller	4	Roller for Saddle Assembly against the Guide Posts.
7	202761	Lift Saddle Weldment	1	Metal body of the Lift Saddle Assembly.
8	202046	Flat Head Screw, 10-32 X 3/4"	6	Secures Wear Strips to Lift Saddle. Stainless Steel.
9	202762	Saddle Slide, 4 3/4" length, 3 1/2" hole spacing	2	Wearable sliding surface for Baskets to slide on.
10	202047	Flat Head Screw, 10-32 X 1/2"	4	Secures Saddle Slides to the Lift Saddle.
11	220473	Splash Shield	1	Contains splashed materials within the Dispenser .
12	202047	Flat Head Screw, 10-32 X 1/2"	5	Secures Splash Shield to Lift Saddle.

AFD-280U Parts List

AFD-280U Drum Motor Assembly

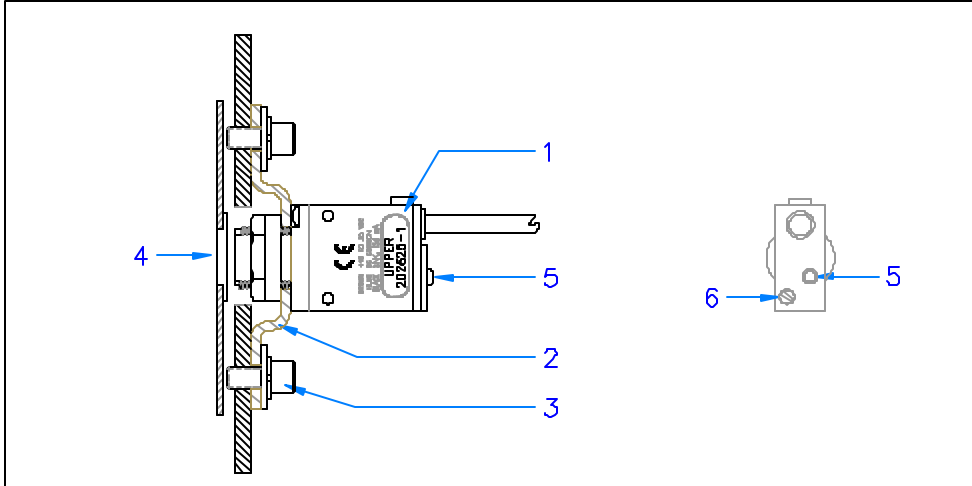


Drum Motor Assembly

ITEM	P/N	DESCRIPTION	NO.	DETAILS
1	290692	Drum Mot or / Gear Reducer	1	24 VDC Drive Motor for the Drum Shaft
2	213136 213140	Bolt, 10-32 X 1 1/4" Lock Washer, #10	4 4	Secures Drum Motor to Chassis Secures Drum Motor to Chassis
3	203445	Circuit Breaker Elimination Kit	1	Removes circuit breaker from circuit.
4	213143 213142 213141	Bolt, 1/4-20 X 1/2" Lock Washer, 1/4" Flat Washer, 1/4"	4 4 4	Secures Drum Motor Chassis to Back Panel Secures Drum Motor Chassis to Back Panel Secures Drum Motor Chassis to Back Panel
5	202797	Drum Motor Mounting Chassis	1	Assembly Chassis
6	203380	Drum Shaft	1	Turns the Drum in the Hopper
7	202895	Flange Bearing	1	Bearing for the Drum Shaft
8	202896	Washer	1	Washer / Spacer
9	213911	Retaining Ring	1	Secures the Flange Bearing
10	290653 203284	Set Screw, 3/8-24 X 3/8" Applied LocTite, thread locking compound	2 2	Secures the Drum Shaft to the Motor Shaft Secures the Set Screws
11	220508 202072	Drum Motor Shaft Collar Shaft Collar Set Screw	1 1	Protects inner Dispenser cabinet from contamination. Secures the Shaft Collar to the shaft.

AFD-280U Parts List

AFD-280U Optical Sensors

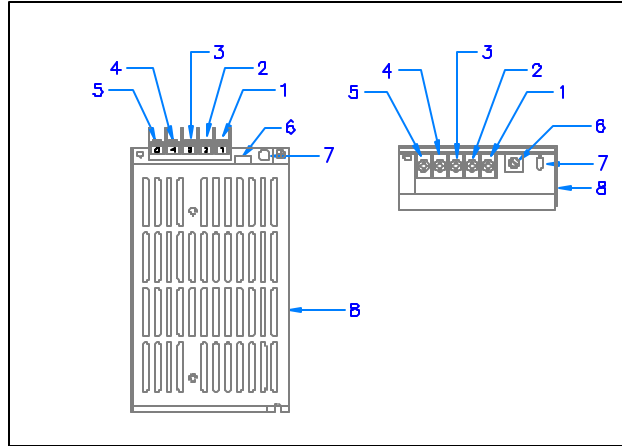


Optical Sensor p/n 202038

ITEM	P/N	DESCRIPTION	NO.	DETAILS
1	202038	Optical Sensor, Banner	2	Sensor for Lift and Guide Basket detection locations.
2	220492	Sensor Mounting Bracket	2	Mounts / Locates the Optical Sensor.
3	213143	Bolt 1/4 -20 X 1/2"	4	Secures Mounting Bracket to Dispenser Back Panel.
	213142	Lock Washer, 1/4"	4	
	213141	Flat Washer 1/4"	4	
4	202619	Sensor Window Kit	2	Sensor protective window.
5	---	Sensor Output LED Indicator	--	Turns ON with object detection.
6	---	Sensitivity / Gain Adjustment	--	Gain Adjustment.

AFD-280U Parts List

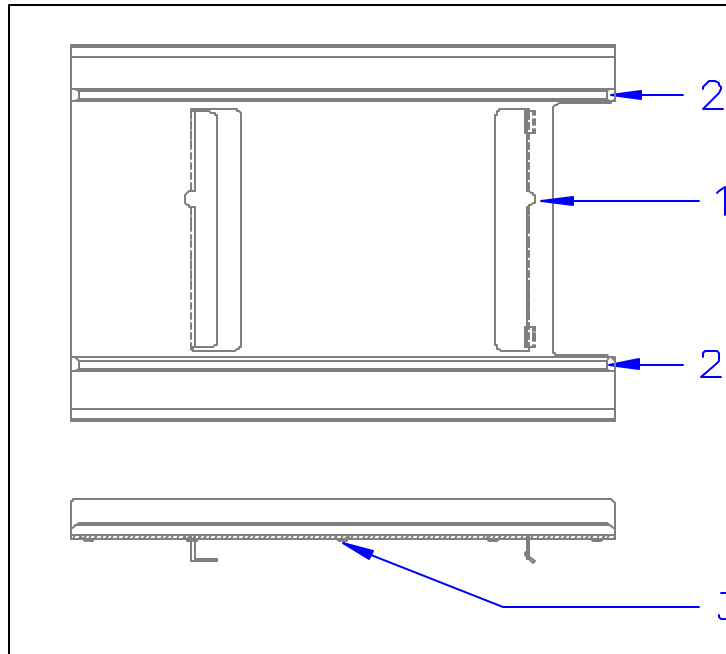
AFD-280U 24.5 Volt Power Supply



Switching Power Supply p/n 202793

ITEM	P/N	DESCRIPTION	NO	DETAILS
1	---	D.C. V+ Output	--	Positive DC output connection point.
2	---	D.C. V- Output	--	Negative DC output connection point.
3	---	Power Supply Ground Connection	--	Power Supply AC Ground Connection.
4	---	A.C. Power Supply, Line Input	--	AC Line Connection Point.
5	---	A.C. Power Supply, Line Input	--	AC Line Connection Point.
6	---	Vout adjustment.	--	DC voltage output adjustment potentiometer.
7	---	Output Indicator LED	--	LED is ON when 24 VDC is present at output terminals.
8	202793	Power Supply, ETA, 2.1A	1	Power Supply , 24.5 VDC output, 95-240 VAC input.
----	215473	2 Position Connector Plug	1	Connects Power to Controller Board
----	291294	Fuse	1	Protects the power supply.

AFD-280U Upper Guide Assembly

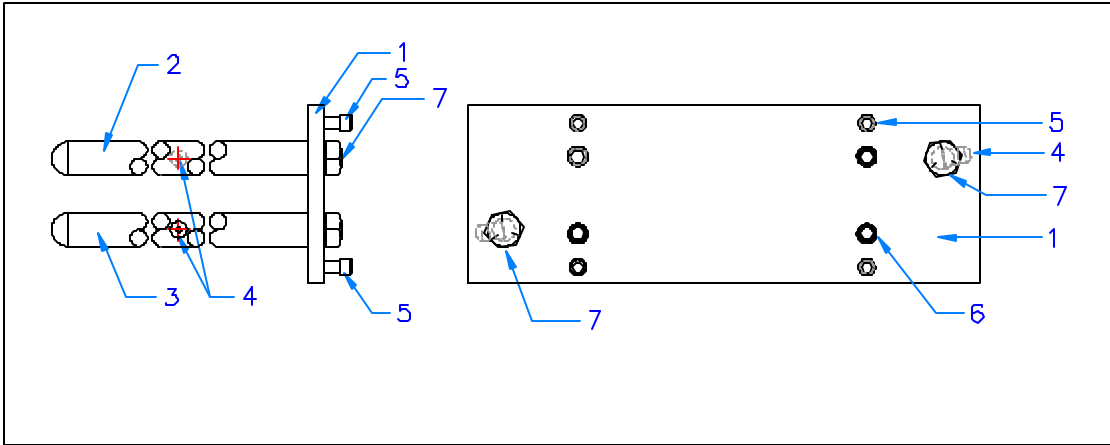


Upper Guide Assembly, Offset Pin (item #1) p/n 202219

ITEM	P/N	DESCRIPTION	NO.	DETAILS
2	202359	Basket Runners, Ultem	2	Slide runners for baskets.
3	290000	Ultem Screws	10	Mounting screws for the Ultem runners.

AFD-280U Parts List

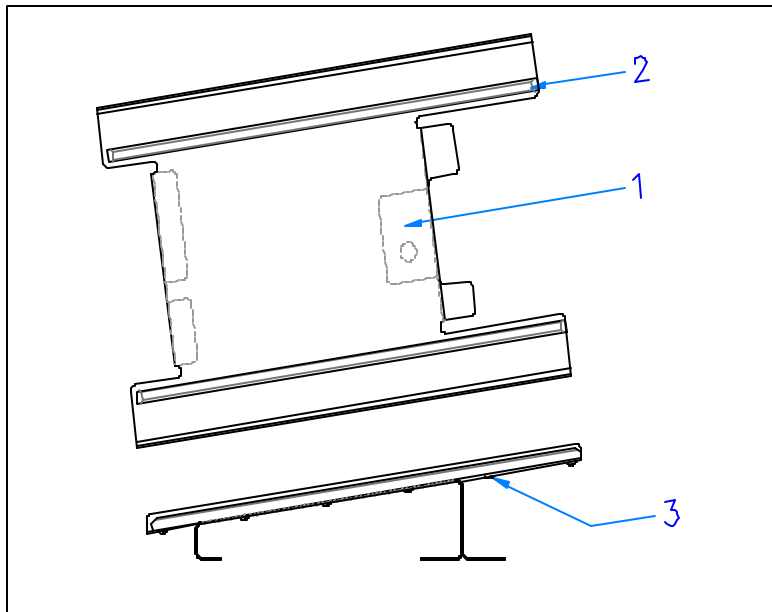
AFD-280U Upper Guide Support Assembly



Upper Guide Support Assembly

ITEM	P/N	DESCRIPTION	NO.	DETAILS
1	220503	Upper Guide Post Mounting Plate	1	Guide Post Mount
2	202218	Upper Guide Post	1	Post to which the Upper Guide is mounted.
3	202218	Upper Guide Post	1	Post to which the Upper Guide is mounted.
4	202044	Fillister Head Screw, 1/4-20 X 1/2"	2	Locates Upper Guide on Mounting Posts
5	202073	Socket Head Cap Screw, 1/4-20 X 3/4"	4	Adjusts Mounting Plate positioning.
6	213539	Socket Head Cap Screw, 1/4-20 X 1"	4	Secures Mounting Plate to Dispenser Chassis
	213142	Lock Washer, 1/4"	4	
7	202174	Socket Head Bolt, 1/2" X 1-1/4"	2	Secures Upper Guide Posts to Mounting Plate
	213264	Lock Washer, 1/2"	2	

AFD-280U Lower Guide Assembly



Lower Guide Assembly (item #1) p/n 202779

ITEM	P/N	DESCRIPTION	NO.	DETAILS
2	220494	Basket Runners, Ultem	2	Slide runners for baskets.
3	290000	Mounting Screws	12	Mounting Screws