



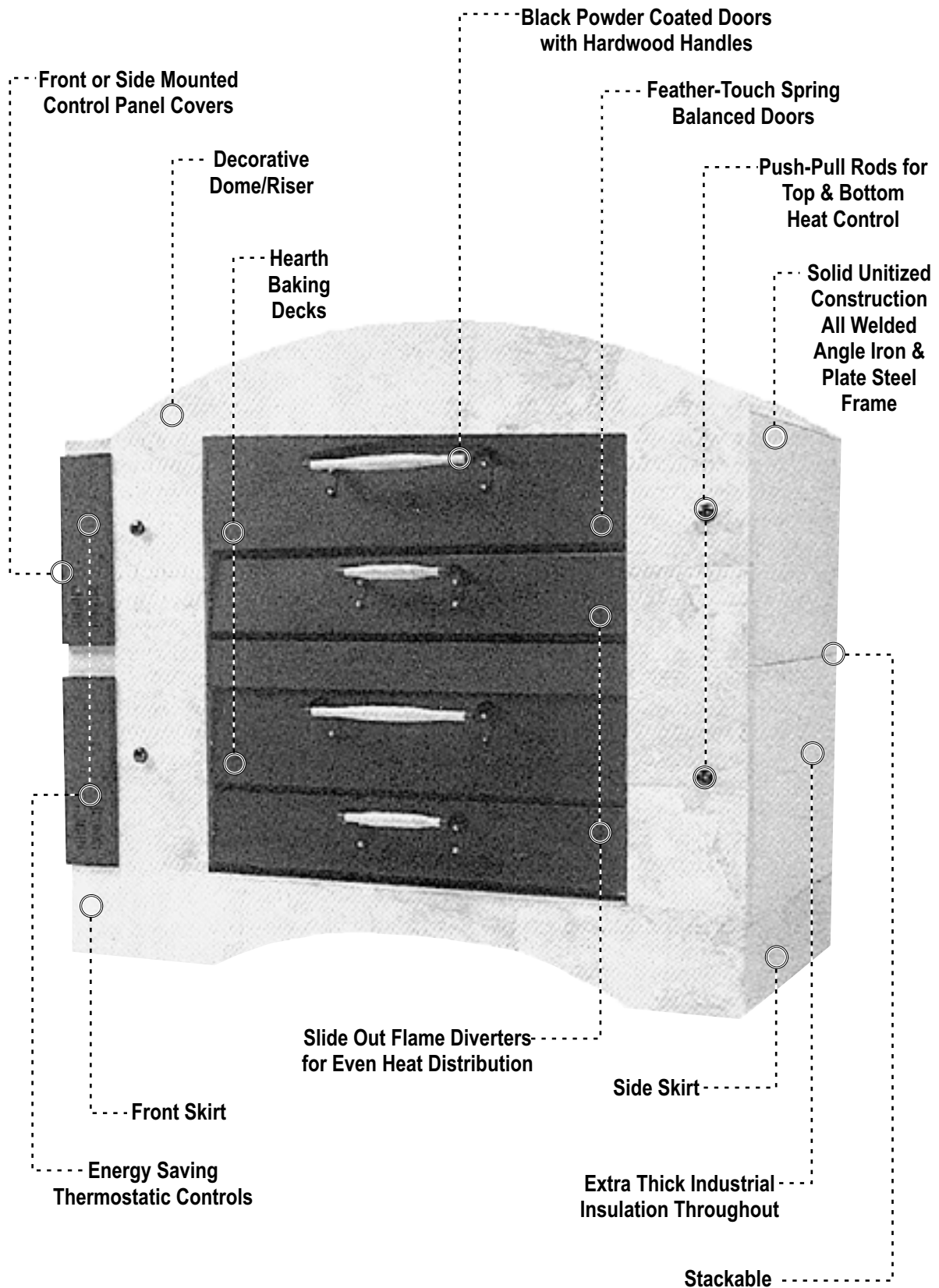
30 Pine Street • New Rochelle • New York • 10801  
914 / 576 - 0200  
914 / 576 - 0605 fax  
1 - 800 - 431 - 2745 US & Canada  
www.bakerspride.com web address

## DESIGN & INSTALLATION GUIDELINES DSP DISPLAY OVENS

Singles:	DS-805	D-125	Y-600	Y-800
Doubles:	DS-990	D-250	Y-602	Y-802



## Y-602-DSP - FINISHED IN SANDSTONE



# TABLE OF CONTENTS

<u>ITEM</u>	<u>SKETCH</u>	<u>PAGE</u>
SPECIFICATION / ORDER GUIDE CHECK LIST.....		4
SPECIFICATION SHEETS.....		5-8
● DS-805 & DS-990 .....		5, 6
● D-125 & D-250.....		7, 8
● Y-600 & Y-602, Y-800 & Y-802.....		9, 10
GETTING STARTED.....	1-4	11-14
PLAIN 'AS IS'.....	5	15
DECORATIVE-TRIM INSTALLATION GUIDELINES.....	6	15
"DSP" STYLE INSTALLATION GUIDELINES.....	7, 8	16

# SPECIFICATION / ORDER GUIDE CHECK LIST



Date: \_\_\_\_\_  
 Dealer Name: \_\_\_\_\_  
 Project Name: \_\_\_\_\_  
 P. O. Number: \_\_\_\_\_  
 Signature: \_\_\_\_\_

## How do you intend to finish/build-in your oven(s)? (Choose One)

- ☐ As Is / Decorative Exterior Trim - Casters optional  
☐ DSP Style - Apply tile/stone directly on to oven(s) - Skirts provided

## MODEL (Choose One)

- ☐ DS-805-DSP Single  
☐ D-125-DSP Single  
☐ Y-600DSP Single  
☐ Y-800DSP Single  
☐ DS-990-DSP Double  
☐ D-250-DSP Double  
☐ Y-602DSP Double  
☐ Y-802DSP Double

## Single Oven or Upper Oven of Stacked Installation

### Hinged Control Panel Door (Choose One)

- ☐ Front Mounted  
☐ Side Mounted

### Hinged Control Panel Door (Choose One)

- ☐ Black Powder Coated  
☐ Stainless Steel

### Lower Combustion Chamber Door (Choose One)

- ☐ Black Powder Coated  
☐ Stainless Steel

### Bake Chamber Door (Choose One)

- ☐ Black Powder Coated  
☐ Stainless Steel

### Castors (Set of 4)

*Not suitable for DSP style finish with skirts*

- ☐ Yes  
☐ No

### Gas Type (Choose One)

- ☐ Natural Gas  
☐ L.P. Gas

### Automatic Oven Starter (Optional)

*Allows operator to establish automatic oven start & stop times*

- ☐ Yes  
☐ No

### Decorative Upper Riser Panel / Dome

*Note: Curved Dome on "Y" Series Ovens & Rectangular Riser on "D" Series Ovens*

- ☐ Yes  
☐ No

## Lower Oven of Stacked Installation

### Hinged Control Panel Door (Choose One)

- ☐ Front Mounted  
☐ Side Mounted

### Hinged Control Panel Door (Choose One)

- ☐ Black Powder Coated  
☐ Stainless Steel

### Lower Combustion Chamber Door (Choose One)

- ☐ Black Powder Coated  
☐ Stainless Steel

### Gas Type (Choose One)

- ☐ Natural Gas  
☐ L.P. Gas

### Bake Chamber Door (Choose One)

- ☐ Black Powder Coated  
☐ Stainless Steel

### Automatic Oven Starter (Optional)

*Allows operator to establish automatic oven start & stop times*

- ☐ Yes  
☐ No

### Castors (Set of 4)

*Not suitable for DSP style finish with skirts*

- ☐ Yes  
☐ No

## Legs

### Legs (total height with or without casters) included. Please specify.

- ☐ 30" (Standard on all single deck models)  
☐ 16" (Standard on all double deck models except D-250)  
☐ 12" (Standard on model D-250)  
☐ Special height legs - specify length - optional extra charge

**NOTE:** See specification sheets for additional options & accessories.

DSP CHECK LIST 4/06



## SUPER DECK DS DSP SERIES GAS DECK OVENS



**DS -805 DSP**  
shown without top riser  
and without skirts

### SPECIFICATIONS

BAKERS PRIDE Super Deck DS DSP gas Deck Ovens are ideal for display cooking and exhibition kitchens. These ovens are designed and engineered to be "built-in" behind brick, stone or tile applied directly to ovens exterior or finished and trimmed in brass, copper, stainless or powder-coated trim.

Ovens may be stacked two high. Oven exteriors are all heavy-gauge, type 403 stainless steel and are fully insulated up to 5" (127mm) thick for cooler outer temperatures and consistent interior temperatures.

Interior oven frame is constructed of 1/4" (6mm) heavy-duty angle iron frame, completely welded to form a single, unitized section. The oven body and lining are then welded to the framework.

Oven interiors are manufactured of high-heat resistant 16-gauge aluminized steel. Doors are fully insulated, spring balanced to remain open or closed until moved and finished in black powder coat with hard wood handles.

All models feature independent, operator-controlled top & bottom heat control dampers and micro slides for perfectly balanced results.

DS DSP Series features a 300°-650° F (149°-343°C) throttling thermostat, 6 3/4" (171mm) interior deck height with 1 1/2" (38mm) thick hearth stone decks (steel decks optional) and are supported by a 1/4" (6mm) angle iron frame.

Combination gas control incorporates a manual gas valve, pilot safety and pressure regulator. Easily removable, slide-out, heavy-duty flame diverters distributes the burner flame uniformly in the burner chamber. A 3/4" (19mm) NPT gas connection is located on the left side and left rear of oven - operator/installer may choose.

Heavy-duty, 7-gauge hot rolled steel legs are standard and finished with durable Bakertone Gray.

2 Year limited part and labor warranty standard.

Job \_\_\_\_\_ Item # \_\_\_\_\_

### GAS DECK OVENS



- ☐ Model DS-805 DSP Single
- ☐ Model DS-990 DSP Double

### STANDARD FEATURES

- ☐ DS Series @ 70,000 BTUH per deck, natural or LP gas
- ☐ 300°-650° F (149°-343°C) throttling thermostat
- ☐ Top & bottom heat control dampers & micro-slides
- ☐ Combination gas controls with valve, regulator & pilot safety
- ☐ Heavy-duty, slide-out flame diverter
- ☐ 6 3/4" (171mm) interior deck heights with 1 1/2" (38mm) thick hearth stone decks
- ☐ All stainless steel exteriors
- ☐ Aluminized steel interiors
- ☐ Spring balanced, fully insulated doors finished in black powder coat with custom hardwood handles or stainless steel with tubular steel handles
- ☐ Front or side mounted controls with large, hinged access door in black powder coat or stainless steel
- ☐ Riser top removable for field installations
- ☐ Front & side skirts
- ☐ Side or rear gas connections on models with front mounted controls - rear gas connections only on models with side mounted controls
- ☐ 7-Gauge legs finished in Bakertone Gray
- ☐ Fully insulated throughout
- ☐ 2 Year limited part and labor warranty

### OPTIONS & ACCESSORIES

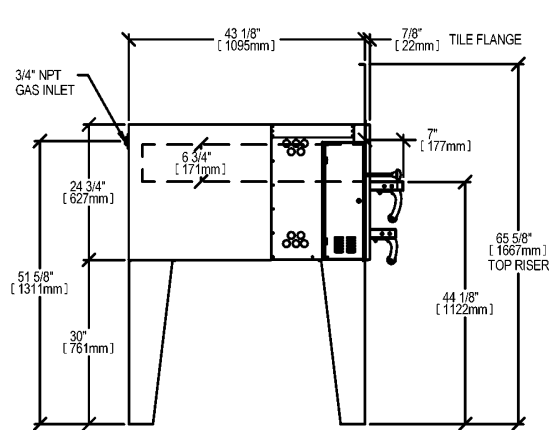
- ☐ Steel decks in lieu of hearth decks
- ☐ 150°-550° F (65°-288°C) thermostat
- ☐ 350°-700° F (149°-371°C) thermostat
- ☐ Set of 4 casters - two with locks - not for use with skirts
- ☐ Stainless steel leg covers
- ☐ Special height legs
- ☐ Automatic oven starter
- ☐ Draft flue for direct vent (not available on CE units)
- ☐ Without dome/riser and/or without skirts

### CERTIFICATIONS

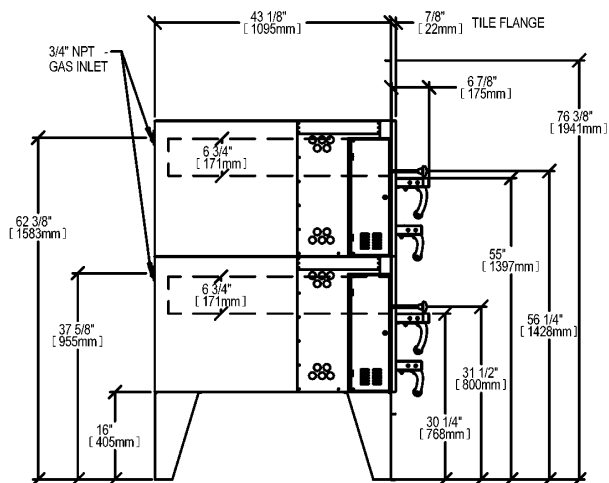


BAKERS PRIDE OVEN COMPANY, INC.  
30 Pine Street, New Rochelle, NY 10801  
914/576-0200 • 1-800-431-2745 • fax 914/576-0605  
www.bakerspride.com

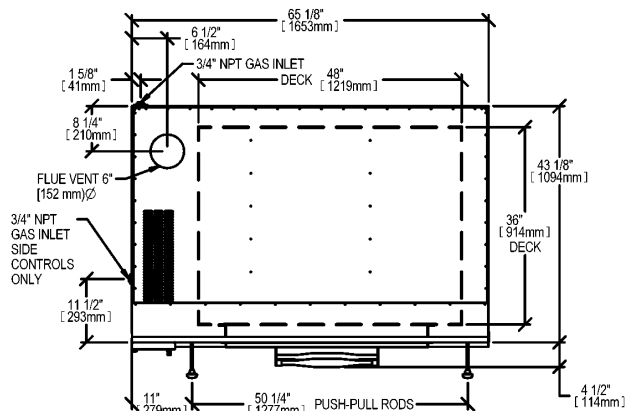
*Continuous product improvement is a policy of Bakers Pride Oven Company. Therefore, specifications and design are subject to change without notification*



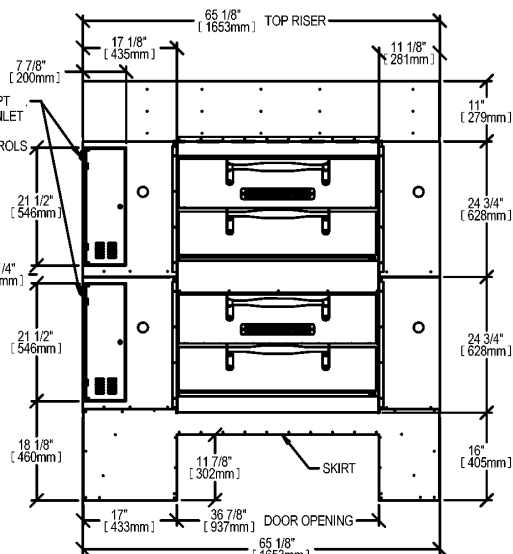
LEFT SIDE VIEW  
SINGLE UNIT WITH SIDE CONTROLS



LEFT SIDE VIEW  
STACKED UNIT WITH SIDE CONTROLS



TOP VIEW



FRONT VIEW  
STACKED UNIT WITH FRONT CONTROLS

## ALL DIMENSIONS NOMINAL

### SHIPPING INFORMATION

Model	Shipping Weight		Carton Dimensions				Crate Size		
	Lbs.	Kilos	Inches	Width mm	Inches	Depth mm	Inches	Height mm	Cubic Feet
DS-805	1073	487	31	787	60	1365	86	2184	78

Each oven ships separately

Hearth Decks and Legs ship in separate cartons

### SPECIFICATIONS

Model	Deck Sizes		# Decks	Overall Dimensions					
	in.	mm		Inches	Width mm	Inches	Depth mm	Inches	Height* mm
DS-805	48 x 36	1219 x 914	1	65 1/4	1651	43	1092	54 7/8	1394
DS-990	48 x 36	1219 x 914	2	65 1/4	1651	43	1092	65 3/4	1670

\* Overall height excludes dome/riser top

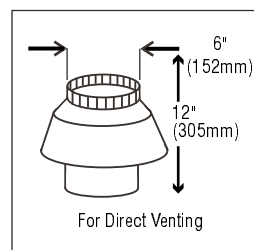
### MINIMUM CLEARANCES

	Noncombustible Construction		Combustible Construction	
	Inches	mm	Inches	mm
Right	0	0	1	25
Left	0	0	3	76
Rear	2	51	3	76

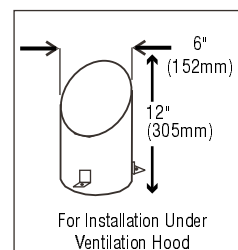
### GAS SUPPLY

Model	BTUH	KW	CONNECTION
DS-805	70,000	20.5	3/4"
DS-990	140,000	41.0	3/4"

CE certification not available in LP gas



**MUST BE SPECIFIED  
AT TIME OF ORDER**



**STANDARD**



BAKERS PRIDE OVEN COMPANY, INC.  
30 Pine Street, New Rochelle, NY 10801  
914/576-0200 • 1-800-431-2745 • fax 914/576-0605  
www.bakerspride.com

Continuous product improvement is a policy of Bakers Pride Oven Company. Therefore, specifications and design are subject to change without notification

TSW:07/06



## SUPER DECK D-DSP SERIES GAS DECK OVENS



**D-125 DSP**

shown without top riser  
and without skirts

### SPECIFICATIONS

BAKERS PRIDE D Series DSP Deck Ovens are ideal for display cooking and exhibition kitchens. These ovens are designed and engineered to be "built-in" behind brick stone or tile applied directly to ovens exterior or finished and trimmed in brass, copper, stainless or powder-coated trim.

Ovens may be stacked two high. Oven exteriors are all heavy-gauge, type 403 stainless steel and are fully insulated up to 5" (127mm) thick for cooler outer temperatures and consistent interior temperatures.

Interior oven frame is constructed of 1/4" (6mm) heavy-duty angle iron frame, completely welded to form a single, unitized section. The oven body and lining are then welded to the framework.

Oven interiors are manufactured of high-heat resistant 16-gauge aluminized steel. Doors are fully insulated, spring balanced to remain open or closed until moved and are finished in black powder coat with hard wood handles.

All models feature independent, operator-controlled top & bottom heat control dampers and micro slides for perfectly balanced results.

D Series features a 300°-650° F (149°-343°C) throttling thermostat, 10 3/4" (273mm) interior deck height with 1 1/2" (38mm) thick hearth stone decks (steel decks optional) and are supported by a 1/4" (6mm) angle iron frame.

Combination gas control incorporates a manual gas valve, safety pilot and pressure regulator. Easily removable, slide-out, heavy-duty flame diverters distribute the burner flame uniformly in the burner chamber. A 3/4" (19mm) NPT gas connection is located on the left side and left rear of oven - operator/installer may choose.

Heavy-duty, 7-gauge hot rolled steel legs are standard and finished with durable Bakertone gray paint.

2 Year limited part and labor warranty standard.

Job \_\_\_\_\_ Item # \_\_\_\_\_

### GAS DECK OVENS



- ☐ Model D-125 DSP Single
- ☐ Model D-250 DSP Double

### STANDARD FEATURES

- ☐ D Series @ 125,000 BTUH per deck natural gas or 105,000 BTUH in LP gas (LP gas not CE certified)
- ☐ 300°-650° F (149°-343°C) throttling thermostat
- ☐ Top & bottom heat control dampers & micro-slides
- ☐ Combination gas controls with valve, regulator & safety pilot
- ☐ Heavy-duty, slide-out flame diverters
- ☐ 10 3/4" (273mm) interior deck heights with 1 1/2" (38mm) thick stone hearth decks
- ☐ All stainless steel exteriors
- ☐ Aluminized steel interiors
- ☐ Spring balanced, fully insulated doors finished in black powder coat with custom hard wood handles or stainless steel with tubular steel handles
- ☐ Front or side mounted controls with large, hinged access cover in black powder coat or stainless steel
- ☐ Riser top - removable for field installation
- ☐ Front & side skirts
- ☐ Left side or rear gas connections on models with front mounted controls - rear gas connection only on models with side mounted controls
- ☐ 7-Gauge legs
- ☐ Fully insulated throughout
- ☐ 2 Year limited part and labor warranty

### OPTIONS & ACCESSORIES

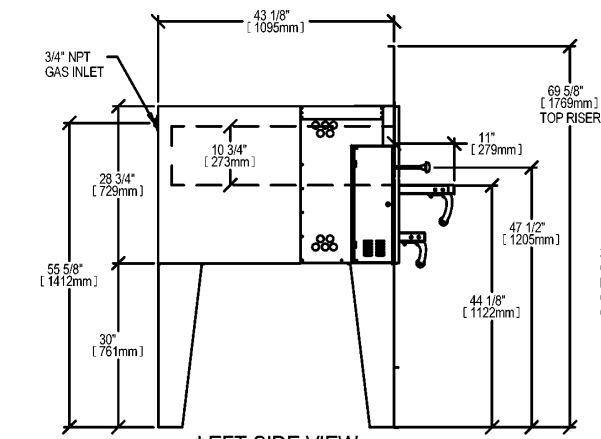
- ☐ Steel decks
- ☐ 150°-550° F (65°-288°C) bake thermostat
- ☐ Set of 4 casters - two with locks - not for use with skirts
- ☐ Stainless steel leg covers
- ☐ Special height legs
- ☐ Automatic oven starter
- ☐ Draft flue for direct vent (not available on CE units)
- ☐ Black powder coated doors with hard wood handles
- ☐ Black powder coated hinged control access door panel
- ☐ Without dome and/or without skirts

### CERTIFICATIONS

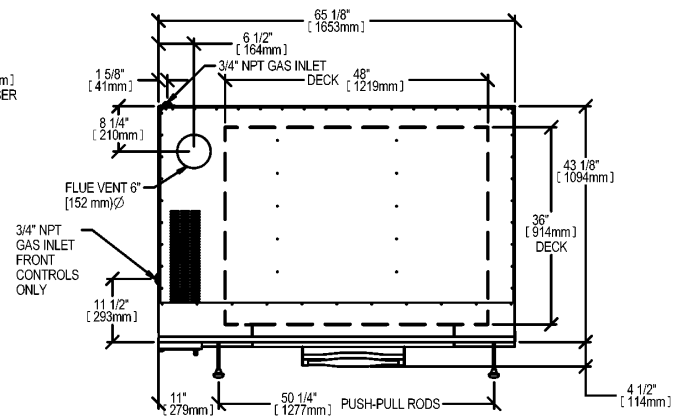


BAKERS PRIDE OVEN COMPANY, INC.  
30 Pine Street, New Rochelle, NY 10801  
914/576-0200 • 1-800-431-2745 • fax 914/576-0605  
www.bakerspride.com

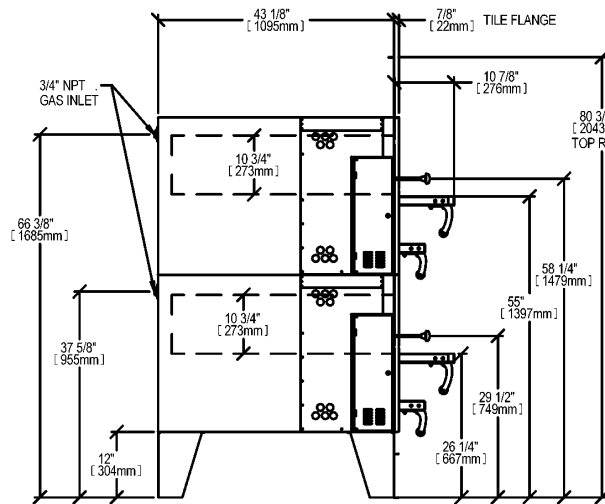
*Continuous product improvement is a policy of Bakers Pride Oven Company. Therefore, specifications and design are subject to change without notification*



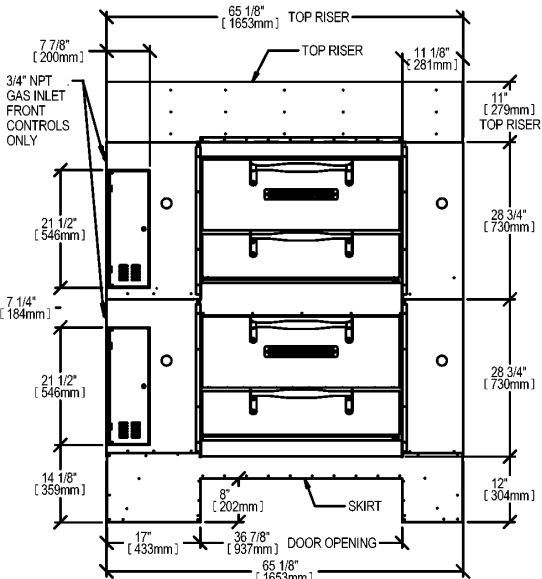
LEFT SIDE VIEW  
SINGLE UNIT WITH SIDE CONTROLS



TOP VIEW



LEFT SIDE VIEW  
STACKED UNIT WITH SIDE CONTROLS



FRONT VIEW

STACKED UNIT WITH FRONT CONTROLS

ALL DIMENSIONS NOMINAL

#### SHIPPING INFORMATION

Model	Shipping Weight		Carton Dimensions				Crate Size		
	Lbs.	Kilos	Inches	Width mm	Inches	Depth mm	Inches	Height mm	Cubic Feet
D-125	1385	626	31	787	53	1364	82	2083	88

Each oven ships separately

Hearth Decks and Legs ship in separate cartons

#### SPECIFICATIONS

Model	Deck Sizes		# Decks	Overall Dimensions			
	in.	mm		Inches	Width mm	Inches	Depth mm
D-125	48 x 36	1219 x 914	1	65 1/4	1657	43	1092
D-250	48 x 36	1219 x 914	2	65 1/4	1657	43	1092

\* Overall height excludes dome top

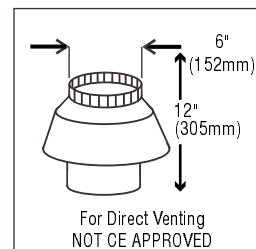
#### MINIMUM CLEARANCES

	Noncombustible Construction		Combustible Construction	
	Inches	mm	Inches	mm
Right	0	0	1	25
Left	0	0	3	76
Rear	2	51	3	76

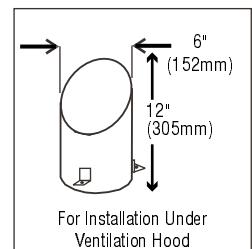
#### GAS SUPPLY

Model	GAS TYPE	BTUH	KW	CONNECTION
D-125	natural	125,000	36.6	3/4"
D-250	natural	250,000	30.7	3/4"
D-125	LP	105,000	73.2	3/4"
D-250	LP	210,000	61.4	3/4"

CE certification not available in LP gas



**MUST BE SPECIFIED  
AT TIME OF ORDER**



**STANDARD**



BAKERS PRIDE OVEN COMPANY, INC.  
30 Pine Street, New Rochelle, NY 10801  
914/576-0200 • 1-800-431-2745 • fax 914/576-0605  
www.bakerspride.com

Continuous product improvement is a policy of Bakers Pride Oven Company. Therefore, specifications and design are subject to change without notification

TSW:07/06



## SUPER DECK Y-DSP SERIES GAS DISPLAY OVENS



**Model Y-602-DSP**  
with optional stone finish

### SPECIFICATIONS

BAKERS PRIDE Y-DSP Display Ovens are ideal for display cooking and exhibition kitchens. These ovens are designed and engineered to be "built-in" behind brick, stone or tile applied directly to ovens exterior or finished and trimmed in brass, copper, stainless or powder-coated trim.

Ovens may be stacked two high. Oven exteriors are all heavy-gauge steel and are fully insulated up to 5" (127mm) thick for cooler outer temperatures and consistent interior temperatures.

Interior oven frame is constructed of 1/4" (6mm) heavy-duty angle iron frame, completely welded to form a single, unitized section. The oven body and lining are then welded to the framework.

Oven interiors are manufactured of high-heat resistant 16-gauge aluminized steel. Doors are fully insulated, spring balanced with natural black finish and custom wood handles.

Lintel plates support the masonry or tile for ease of installation. Standard features include dome top plus front and side skirts.

All models feature independent, operator-controlled top & bottom heat control dampers and micro slides for perfectly balanced results.

Y Series features a 300°-650° F (149°-343°C) throttling thermostat, 8" (203mm) interior deck height with 1 1/2" (38mm) thick hearth stone decks (steel decks optional) and are supported by a 1/4" (6mm) angle iron frame.

Combination gas control incorporates a manual gas valve, pilot safety and pressure regulator. Easily removable, slide-out, heavy-duty flame diverters distribute the burner flame uniformly in the burner chamber. A 3/4" (19mm) NPT gas connection is located on the left side and left rear of oven - operator/installer may choose.

Heavy-duty, 7-gauge hot rolled steel legs are standard and finished with durable Bakertone.

2 Year limited part and labor warranty standard.

Job \_\_\_\_\_ Item # \_\_\_\_\_

### GAS DECK OVENS



- ☐ Model Y-600-DSP Single
- ☐ Model Y-602-DSP Double
- ☐ Model Y-800-DSP Single
- ☐ Model Y-802-DSP Double

### STANDARD FEATURES

- ☐ Y Series @ 120,000 BTUH per deck, natural or LP gas
- ☐ 300°-650° F (149°-343°C) throttling thermostat
- ☐ Top & bottom heat control dampers & micro-slides
- ☐ Combination gas controls with valve, regulator & pilot safety
- ☐ Heavy-duty, slide-out flame diverters
- ☐ 8" (203mm) interior deck heights with 1 1/2" (38mm) thick hearth stone decks
- ☐ Black powder coated doors with custom hardwood handles or stainless doors with tubular steel handles
- ☐ Front or side mounted controls with large, hinged access cover door in black powder coat or stainless steel
- ☐ Dome top - removable for field installations
- ☐ Front & side skirts
- ☐ Aluminized steel interiors
- ☐ Spring balanced, fully insulated doors
- ☐ Rear gas connections
- ☐ 7-Gauge legs
- ☐ Fully insulated throughout
- ☐ 2 Year limited part and labor warranty

### OPTIONS & ACCESSORIES

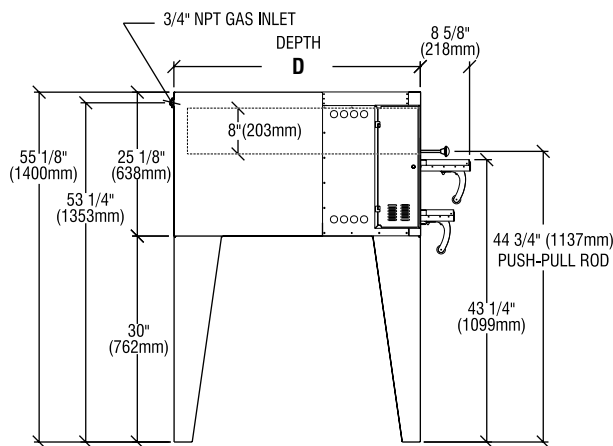
- ☐ Side-mounted controls
- ☐ Steel decks in lieu of hearth stone decks
- ☐ 150°-550° F (65°-288°C) thermostat
- ☐ Automatic oven starter
- ☐ Draft flue for direct vent (not available on CE units)
- ☐ Fire brick hearth decks (Y-600/602 only)
- ☐ Without dome and/or without skirts
- ☐ Set of 4 casters - two with locks - not for use with skirts

### CERTIFICATIONS

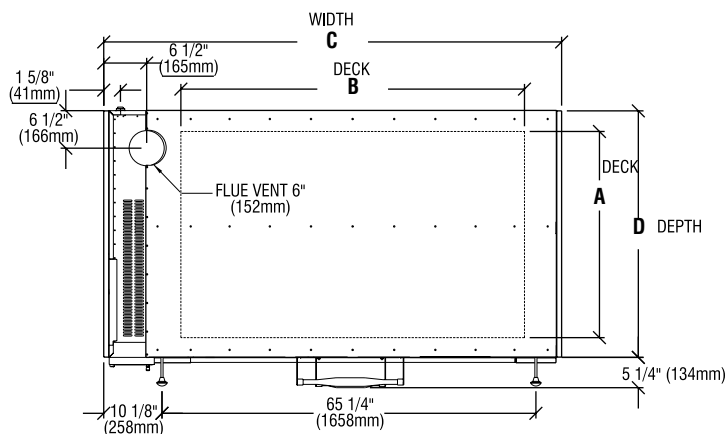


BAKERS PRIDE OVEN COMPANY, INC.  
30 Pine Street, New Rochelle, NY 10801  
914/576-0200 • 1-800-431-2745 • fax 914/576-0605  
www.bakerspride.com

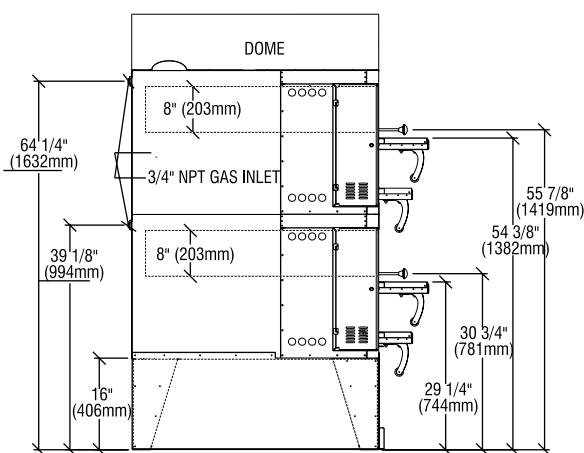
*Continuous product improvement is a policy of Bakers Pride Oven Company. Therefore, specifications and design are subject to change without notification*



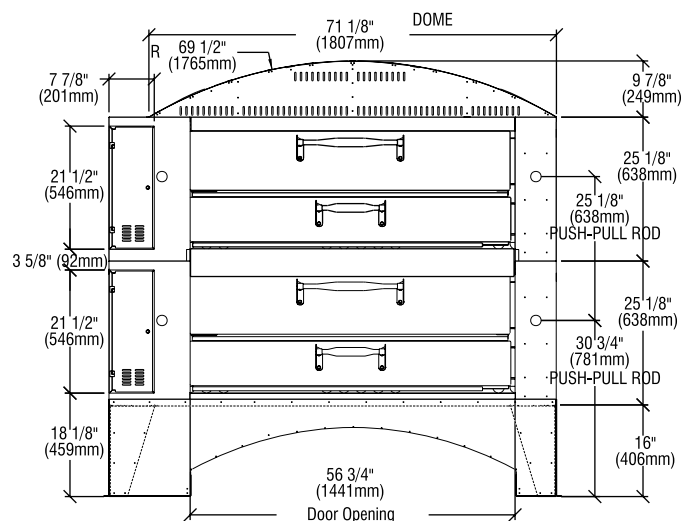
**LEFT SIDE VIEW**  
Single Unit With Side Controls



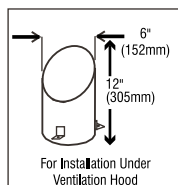
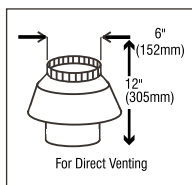
**TOP VIEW**



**LEFT SIDE VIEW**  
Stacked Unit With Side Controls



**FRONT VIEW**  
Stacked Unit With Front Controls



ALL DIMENSIONS NOMINAL

MUST BE SPECIFIED AT TIME OF ORDER

STANDARD

#### SHIPPING INFORMATION

Model	Shipping Weight		Carton Dimensions			Crate Size		
	Lbs.	Kilos	Inches	Width mm	Depth mm	Inches	Height mm	Cubic Feet
Y-600-DSP	1385	626	31	787	53	1364	82	2083
Y-800-DSP	1600	726	31	787	60	1365	86	2184

Each oven ships separately

Hearth Decks and Legs ship in separate cartons

#### SPECIFICATIONS

Model	Deck Sizes		# Decks	Overall Dimensions					
	A x B	mm		Inches	mm	Inches	mm	Height*	mm
Y-600-DSP	36 x 60	914 x 1524	1	78	1981	43	1092	55 1/8	1400
Y-602-DSP	36 x 60	914 x 1524	2	78	1981	43	1092	66 1/4	1683
Y-800-DSP	44 x 66	1118 x 1676	1	84	2134	51	1295	55 1/8	1400
Y-802-DSP	44 x 66	1118 x 1676	2	84	2134	51	1295	66 1/4	1683

\* Overall height excludes dome top

#### GAS SUPPLY

Model	BTUH	KW	CONNECTION
Y-600-DSP	120,000	35.15	3/4"
Y-602-DSP	240,000	70.30	3/4"
Y-800-DSP	120,000	35.15	3/4"
Y-802-DSP	240,000	70.30	3/4"

CE certification not available in LP gas  
Each deck requires a separate gas connection

#### MINIMUM CLEARANCES

	Noncombustible Construction		Combustible Construction	
	Inches	mm	Inches	mm
Right	0	0	1	25
Left	0	0	3	76
Rear	2	51	3	76



BAKERS PRIDE OVEN COMPANY, INC.  
30 Pine Street, New Rochelle, NY 10801  
914/576-0200 • 1-800-431-2745 • fax 914/576-0605  
www.bakerspride.com

Continuous product improvement is a policy of Bakers Pride Oven Company.  
Therefore, specifications and design are subject to change without notification

TSW:07/06

## GETTING STARTED

Thank you for choosing DSP style display ovens. We recommend you thoroughly read and consider steps #1 thru #8 prior to designing your kitchen and prior to ordering your oven(s). We also recommend that you thoroughly read and understand these installation guidelines prior to installing your new oven(s).

### STEP #1

Choose which oven size is right for you. DSP display ovens are available in 4 models. Choose single, or double deck for increased capacity and production through put.

<u>MODEL</u>	<u>DESCRIPTION</u>	<u>DECK SIZE</u>	<u>NO. OF DECKS</u>	<u>CAPACITY</u>
DS-805 DSP	Single Deck	48"w x 36"d	1	4 each 16" Pizzas
D-125 DSP	Single Deck	48"w x 36"d	1	4 each 16" Pizzas
Y-600 DSP	Single Deck	60"w x 36"d	1	6 each 16" Pizzas
Y-800 DSP	Single Deck	66"w x 44"d	1	8 each 16" Pizzas
DS-990 DSP	Double Deck	48"w x 36"d	2	8 each 16" Pizzas
D-250 DSP	Double Deck	48"w x 36"d	2	8 each 16" Pizzas
Y-602 DSP	Double Deck	60"w x 36"d	2	12 each 16" Pizzas
Y-802 DSP	Double Deck	66"w x 44"d	2	16 each 16" Pizzas

*Refer to individual specification sheets for more details.*

**1A**

**SINGLE DECK**



**1B**

**DOUBLE DECK**



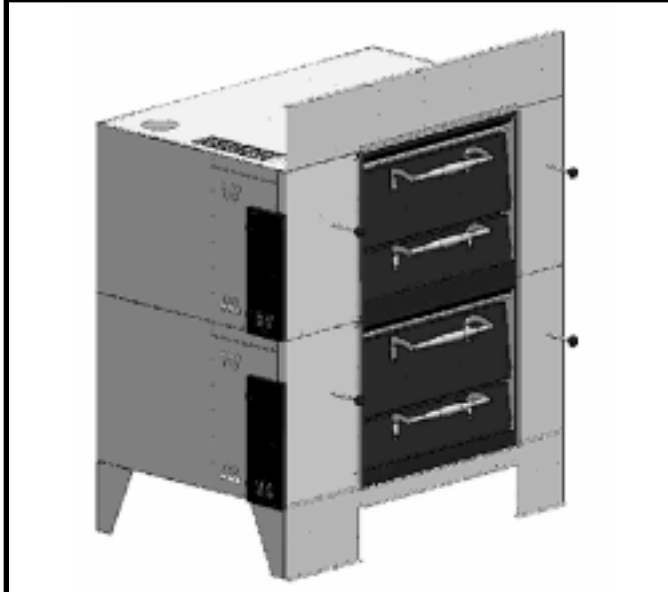
### STEP #2

Choose front-mounted or side-mounted control panel(s). The exterior finish style and location of controls often work together to create the "look" you want.

**2A SINGLE OVEN W/Front-MOUNTED CONTROLS**



**2B DOUBLE UNIT W/Side-MOUNTED CONTROLS**



**STEP #3**

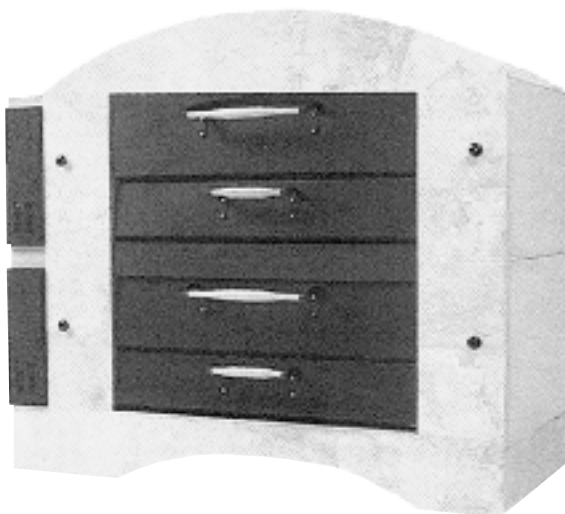
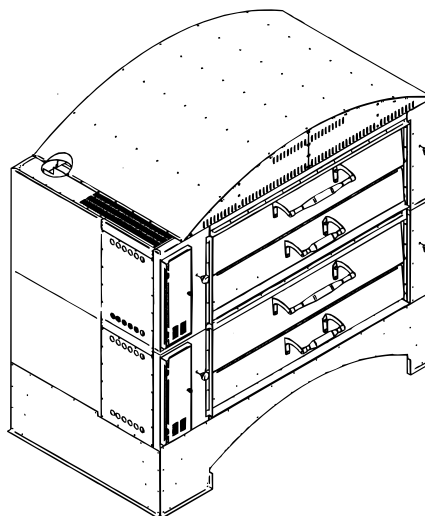
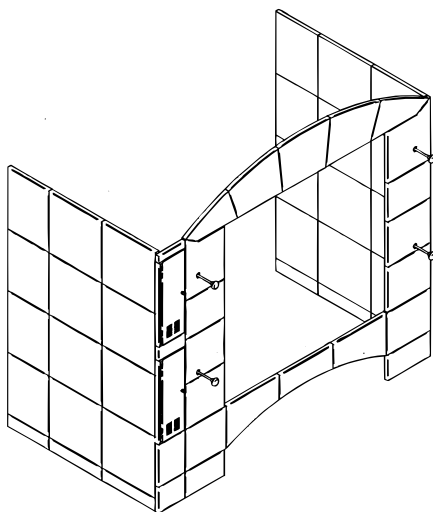
Decide how you intend to “finish” or “build-in” your oven(s) prior to ordering. Installation instructions are available for each “finish” style. There are three basic styles: 1, 2, 3.

**3A PLAIN “AS-IS” - STYLE 1**

Plain, AS-IS ready to use. No decorative finish. Available with black powder coated doors or all stainless steel exterior.

**3B DECORATIVE TRIM - STYLE 2**

Finish your oven with decorative trim-pieces of brass, copper, tile etc., in black powder coated doors or all stainless steel exterior.

**3C****DSP - STYLE 3**

“DSP” Style. Stone, tile, thin brick or other masonry finish is applied directly to the oven exterior. Skirts provided, casters excluded.

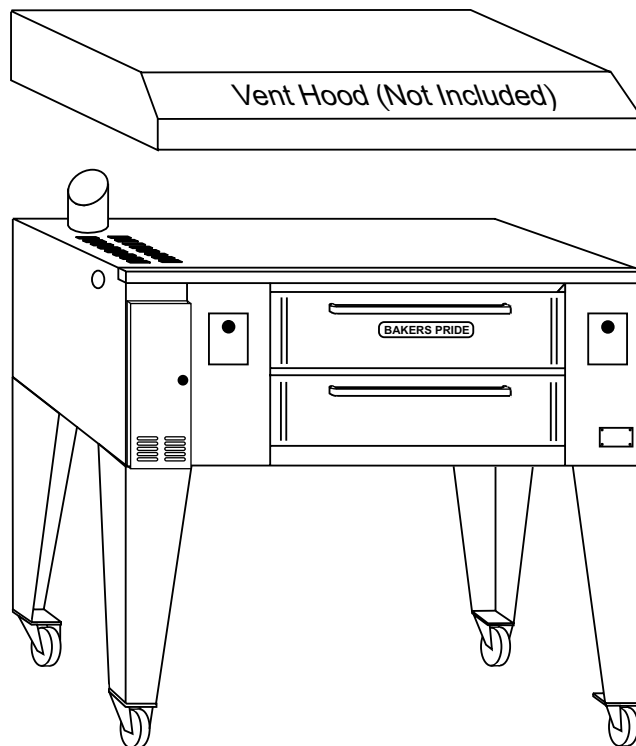
## STEP #4

Ventilation: Choose either a canopy style hood or direct vent .

### 4A Canopy Style Hood



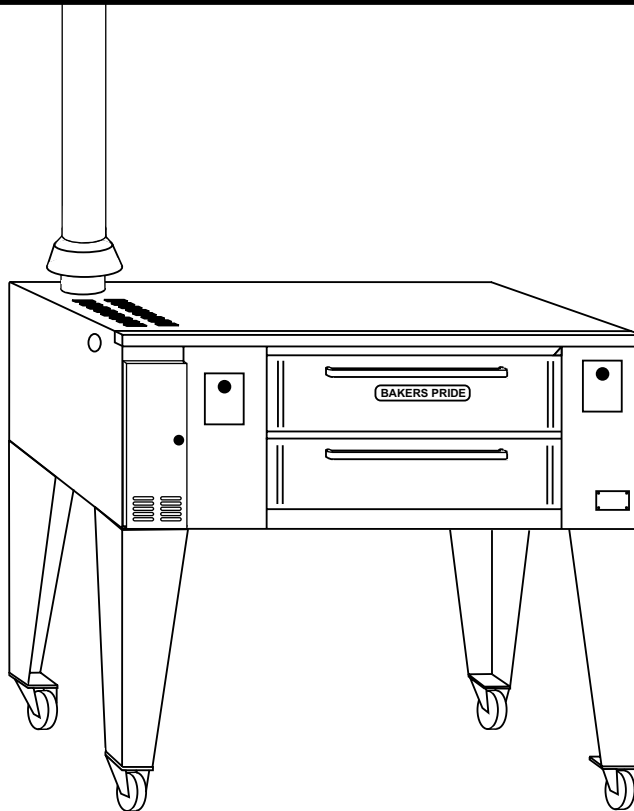
Our **Standard flue** is for exhausting into a canopy hood.



### 4B Direct Vent



Our **Direct Vent** flue is for venting into a chimney and is optional at no extra cost.



**NOTE:** Minimum clearance may be reduced when using UL listed hood assemblies and installed in accordance with the terms of the listing and the manufacturer instructions. Consult NFPA standard number 96 and local codes concerning ventilation requirements and fire extinguishing system requirements.

**STEP #5**

Choose gas type: Natural or L.P. Gas.

**STEP #6**

Choose options and accessories

- Casters - Set of 4.  
**NOTE:** Provision for restraints on the legs with casters must be made.  
**DO NOT** use casters with DSP style built-in ovens as the casters interfere with the skirts.
- Natural wood essence smoke boxes.
- Automatic oven starter.
- Front or Side mounted controls.
- Bake chamber door and combustion chamber door in stainless steel or black powder coated with hard wood handles.
- Hinged control panel access door in stainless steel or black powder coated.
- Black powder coated doors may be mixed or matched with stainless steel doors on special request.

**STEP #7**

Choose leg height (total height with or without casters) included. Please specify.

- 30" (Standard on all single deck models)
- 16" (Standard on all double deck models except D-250)
- 12" (Standard on model D-250)
- Special height legs - specify length - optional extra charge

**Note:** If you choose non-standard leg heights, skirts will not fit properly (DSP style installations).

STANDARD HEIGHTS	
Inches	mm
6	152
12	305
16	406
24	610
30	762
36	914
38	965

Standard legs are provided at no extra charge. Casters optional. Stainless steel leg covers available. You may specify a cut-to-order custom height up to 38" as an option.

**Other Key Provisions And Notes**

- Emergency gas shut off valve in an easily accessible location must be provided by the customer.
- Gasoline or other flammable vapors and liquids should never be stored in the vicinity of the unit.

**BE SPECIFIC WHEN ORDERING**

## DSP DISPLAY OVENS PLAIN “AS-IS” STYLE INSTALLATION

Your DSP Display oven(s) may be used “as-is” without decorative finishes or architecturally designed facades. For best-looking results consider your preference for stainless steel doors or black powder coated doors with wood handles and other exterior finish options.

Oven(s), decks and legs are shipped in separate cartons. Uncrate, attach legs, install decks then connect gas and electric utilities. Refer to operating instruction manual provided with oven(s) for details .

### 5 PLAIN “AS-IS” STYLE



Plain, AS-IS ready to use. No decorative finish. Available with black powder coated doors or all stainless steel exterior.

## DSP DISPLAY OVENS DECORATIVE TRIM STYLE INSTALLATION

Rather than 'building-in' your oven(s) or applying masonry finishes directly to the oven(s) exterior, consider finishing your oven(s) with decorative trim-pieces of brass, copper, powder-coated colored trim or L-shaped tile pieces.

For best-looking results consider your preference for stainless steel doors or black powder coated doors with wood handles and other exterior finish options. Control panel access cover, combustion chamber door and flue-front may be ordered in black-powder-coated finish or stainless steel.

Metal trim pieces are fastened by the foodservice equipment contractor directly to the oven exterior using 3/8" to 1/2" sheet metal screws. Pre-drill holes for best results.

The design is only limited by your imagination.

### 6 DECORATIVE TRIM STYLE



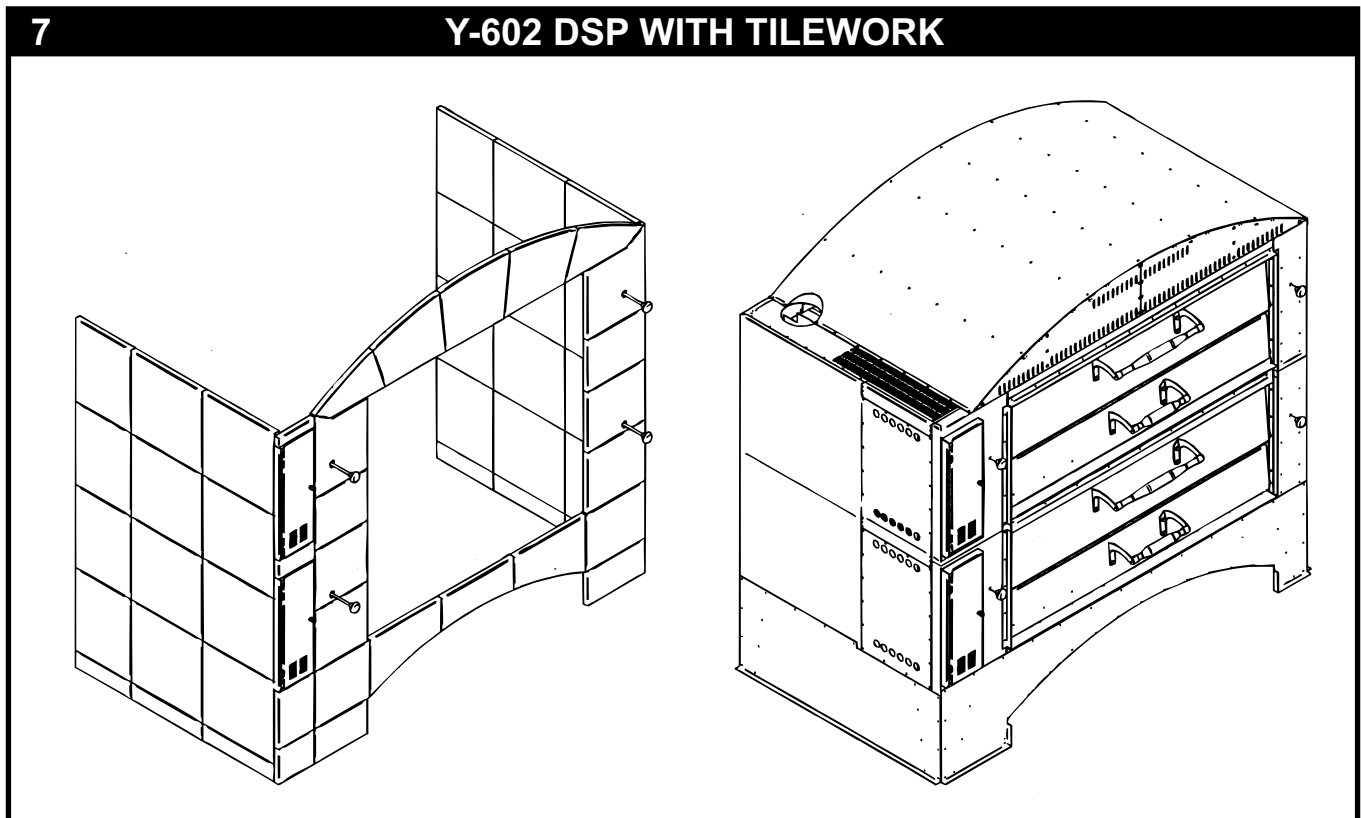
Finished with decorative trim-pieces of brass, copper, tile etc. In black powder coated doors or all stainless steel exterior.

Disclaimers: Continuous product improvement is a policy of Bakers Pride. Therefore specifications and designs are subject to change without notice. Ultimately, the proper design and execution of any appliance installation is the responsibility of the property owner. That party or their representative is expected to engage the service of a qualified professional to carry out that responsibility. This includes matters of compliance with local codes. The above information is provided as guidelines to the installation professional. Job site conditions vary considerably, and therefore Bakers Pride Oven Company can assume no responsibility or liability for the proper installation and operation of the gas-fired appliance. The above assumes certain conditions, which are specified. A quality professional may modify these recommendations as job site conditions dictate. For example, 70°F air is assumed.

## DSP DISPLAY OVENS - DSP STYLE INSTALLATION

Anyone with some experience laying tile should be able to complete this project with relative ease.

- Step #1    Uncrate oven(s), attach legs, set in place.
- Step #2    Attach front sheet metal skirt (provided) by drilling holes in oven legs using pre-punched holes in sheet metal skirt as a template.  
**NOTE:** *Bottom flange on skirt faces outward.*
- Step #3    Secure skirt using sheet metal screws.
- Step #4    If you plan on finishing the oven sides with tile, etc, follow steps #2 and #3 for side skirts.
- Step #5    Fasten 3/8" thick fire resistant "Wonder Board" (7mm) to oven front (and sides if appropriate) using 1/2" to 5/8" sheet metal screws.  
**NOTE:** *"Wonder Board" must be cut to fit. Allow access for push-pull rod holes, oven control access doors and combustion and bake chamber doors.*
- Step #6    Attach tile, stone, thin-brick or the material of choice over "Wonder Board" using either a latex/polymer based high-heat ceramic thin-set mortar, "spec" mix mortar or type "S" mortar. Best results will be achieved using tile, etc. no more than 5/8" thick.  
**NOTE:** *Start at the floor and work up to top of oven. Cut stone, etc. to fit as required based on your design and to create the look you want.*
- Step #7    Consider L-shaped tile or brick trim pieces along front vertical corners and top edges of oven front and side to complete a finished look.
- Step #8    Grout between brick joints. It is best to allow the thin-set mortar to dry over night prior to grouting.
- Step #9    Allow grout to dry for 24 hours prior to starting ovens.
- NOTE:    Wonder Board equivalents; Harde Backer Board, various trade names.



**NOTE:**  
Dome/Riser tops may be removed when required to allow access through doors or under canopy during installations.