

BLAKESLEE

ILLUSTRATED PARTS LIST

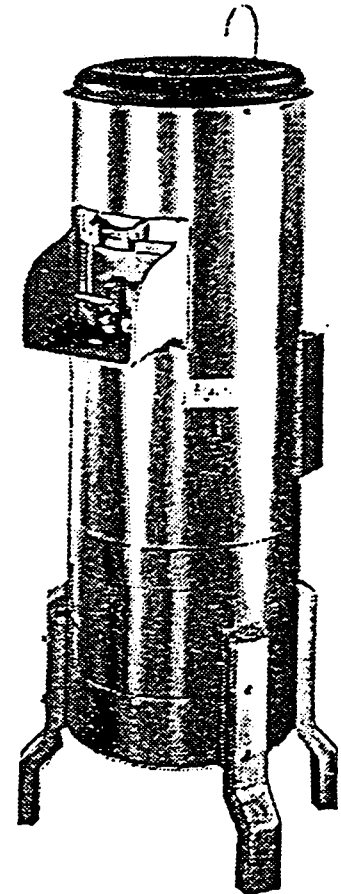
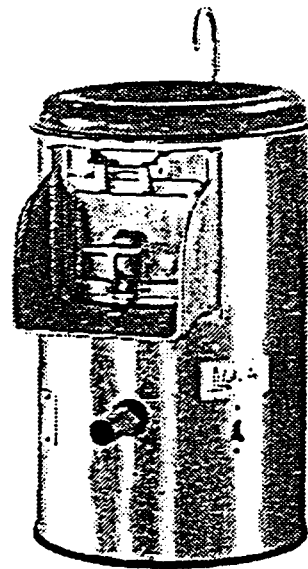
POTATO and VEGETABLE PEELERS

MODELS

S-15, XC-15,

XC-30, XC-60

(letter "T" suffix after model number indicates peeler is equipped with automatic timer).



LIMITED WARRANTY

Your new Blakeslee machine is warranted for one year from date of installation shown above* against defective materials and workmanship. If any defects are found within the above period, parts and authorized service-involvement with their replacement will be furnished free of charge. All labor to be performed during regular working hours. Overtime premium will be charged to the customer. All warranty parts are shipped by surface transportation. If other means of transportation is requested, the customer is required to pay the premium charge. This warranty does not apply to damages resulting from errors in installation on the part of other contractors, nor does it apply to machines which have been subject to accident, alteration, misuse or abuse. It is understood that Blakeslee's warranty obligation with respect to machines located outside of the United States or located in the state of ALASKA is limited to the furnishing of replacement parts only. In the state of HAWAII, repair labor is provided free of charge; travel time and expenses paid by the customer. On the Island of Oahu, repair labor, travel time and expenses are provided free of charge. This is the entire and only warranty of G. S. Blakeslee & Co. We neither assume nor authorize anyone else to assume for us any other obligation or liability in connection with Blakeslee machines.

Blakeslee

* In no case can this warranty exceed eighteen (18) months from date of shipment from our plant at Cicero, Illinois.

BLAKESLEE

1844 S. LARAMIE AVE., CICERO, ILLINOIS 60650

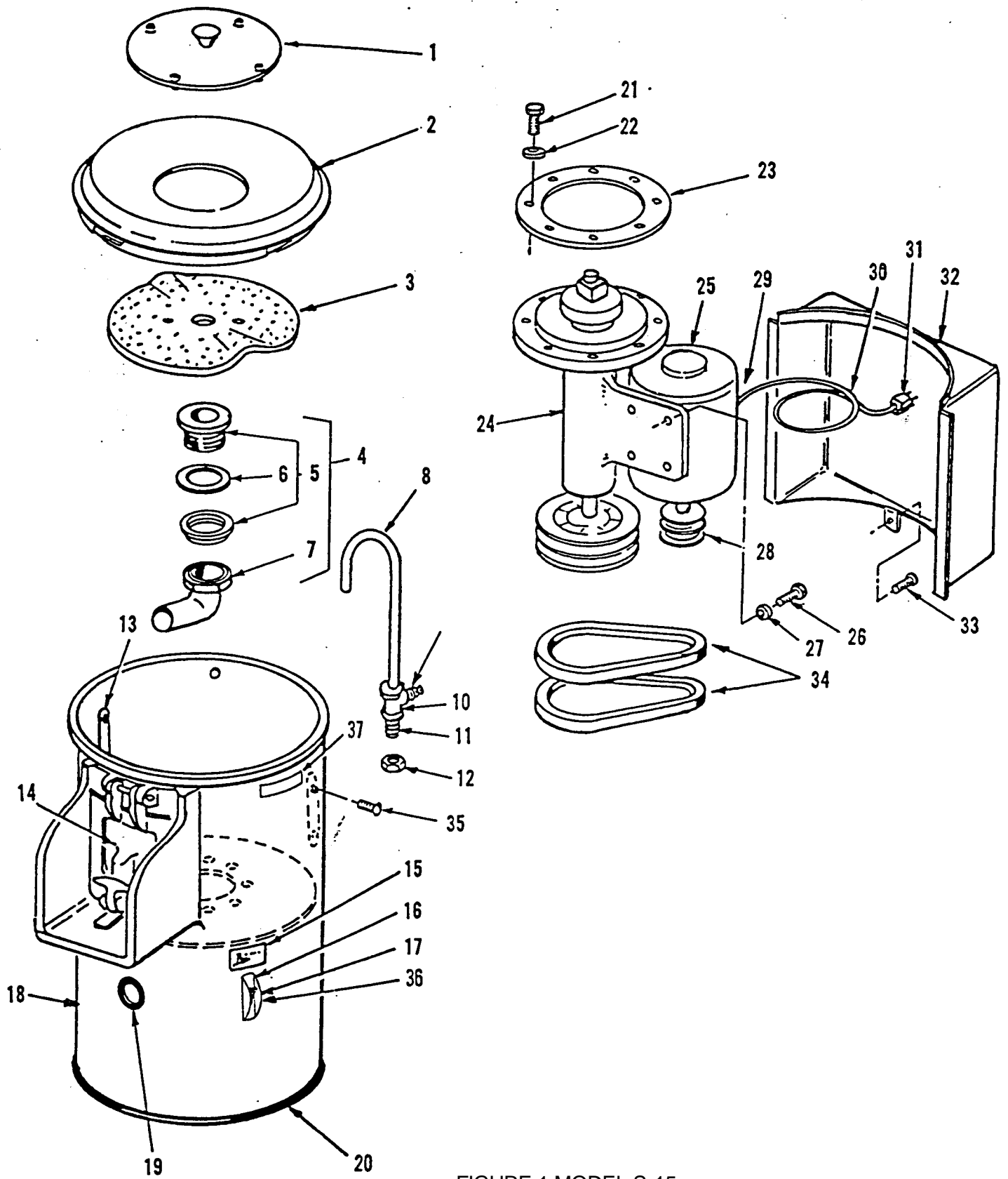


FIGURE 1 MODEL S-15
PEELER

MODEL S-15 PEELER

Item No.	Part No.	Description	No. Reqd.
1	P2-5100	SPLASH COVER, Aluminum	1
2	P2-5163	HOPPER, Plastic	1
3	P4-5270	PEEL DISC	1
4	P2-5144	DRAIN ASSEMBLY (Consists of items 5, 6 & 7)	1
5	P1-5291	DRAIN CUP w/ Flanged Locknut	1
6	P1-5292	GASKET	1
7	P1-5295	WASTE TUBE w/ Locknut and Rubber Washer	1
8	P1-5066	SPRAY PIPE	1
9	P1-17238	NIPPLE, Dixon Style 3500	1
10	P1-17236	TEE, 1/4 x 1/4 x 3/8" Female	1
11	P1-5210	STUD, 1/2 x 3"	1
12	WO-14192	LOCKNUT, 1/2-13 Hex Jam Nut Cadm. Plated.	1
13	P1-5272	LOBE, Peeler	2
14	P4-5258	DOOR ASSEMBLY (See Fig. 3 for Detail Parts)	1
15	P1-5052	PLATE, Data	1
16	P1-5096	PLATE, Switch Cover	1
17	M1-15260	SWITCH, Toggle, 1 PH., Flush	1
17	P1-17203	SWITCH, Toggle, 3 PH., Flush	1
18	P4-5212	HOUSING, Upper w/ Chute Casting	1
19	P1-17246	RUBBER GROMMET	1
20	P1-17247	GASKET, Channel	1
21	W1-8148	CAPSCREW, 3/8 x 3/4" lg., S/S	8
22	W1-5567	WASHER, Plain 3/8" Cad. Pit	8
23	P2-5040	GASKET	1
24	P4-5219	BEARING COLUMN ASSY., Complete (See Fig. 4 for detail parts)	1
25	P1-5280	MOTOR, 1/3 H.P., 1 PH. 115/230V	1
25	P1-5281	MOTOR, 1/3 H.P., 3 PH, 220V	1
26	W1-7111	CAPSCREW, 5/16 x 3/4" lg. Hex Hd.	4
27	P1-17235	LOCKWASHER, 5/16"	4
28	P1-5111	SHEAVE (2 Grooves)	1
29	M1-15388	CONNECTOR, 3/8"-90° (Not Illus.)	1
30	P1-17214	CORD, No. 14 AWG, 3 Wire Cond., 1 PH.	6ft
30	M1-15369	CORD, No. 14 AWG, 4 Wire Cond., 3 PH.	6ft
31	P1-17212	PLUG, Use with 3 Wire Cord, 120V, 1 PH., 15 Amp.	1
31A	M1-15374	PLUG, Use with 3 Wire Cord, 250V, 1 PH., 15 Amp.	1
31B	PO-17213	PLUG, Use with 4 Wire Cord, 208/240V. 60C, 3 PH., 20 Amp.	1
31C	PO-95603	PLUG, Use with 4 Wire Cord, 480V, 60C, 3 PH., 20 Amp.	1
32	P4-5207	HOUSING, Motor Cover	1
33	W1-5987	SCREW, 10-24 x 1/2" Pan Hd.	1
34	P1-15211	V.BELT, 31" lg.	2
35	W1-10307	SCREW, 10/32 x 3/8" lg., Rd. Hd. Mach.	4
36	M1-95654	SWITCH GUARD	1
37	P1-95647	CAUTION LABEL	1

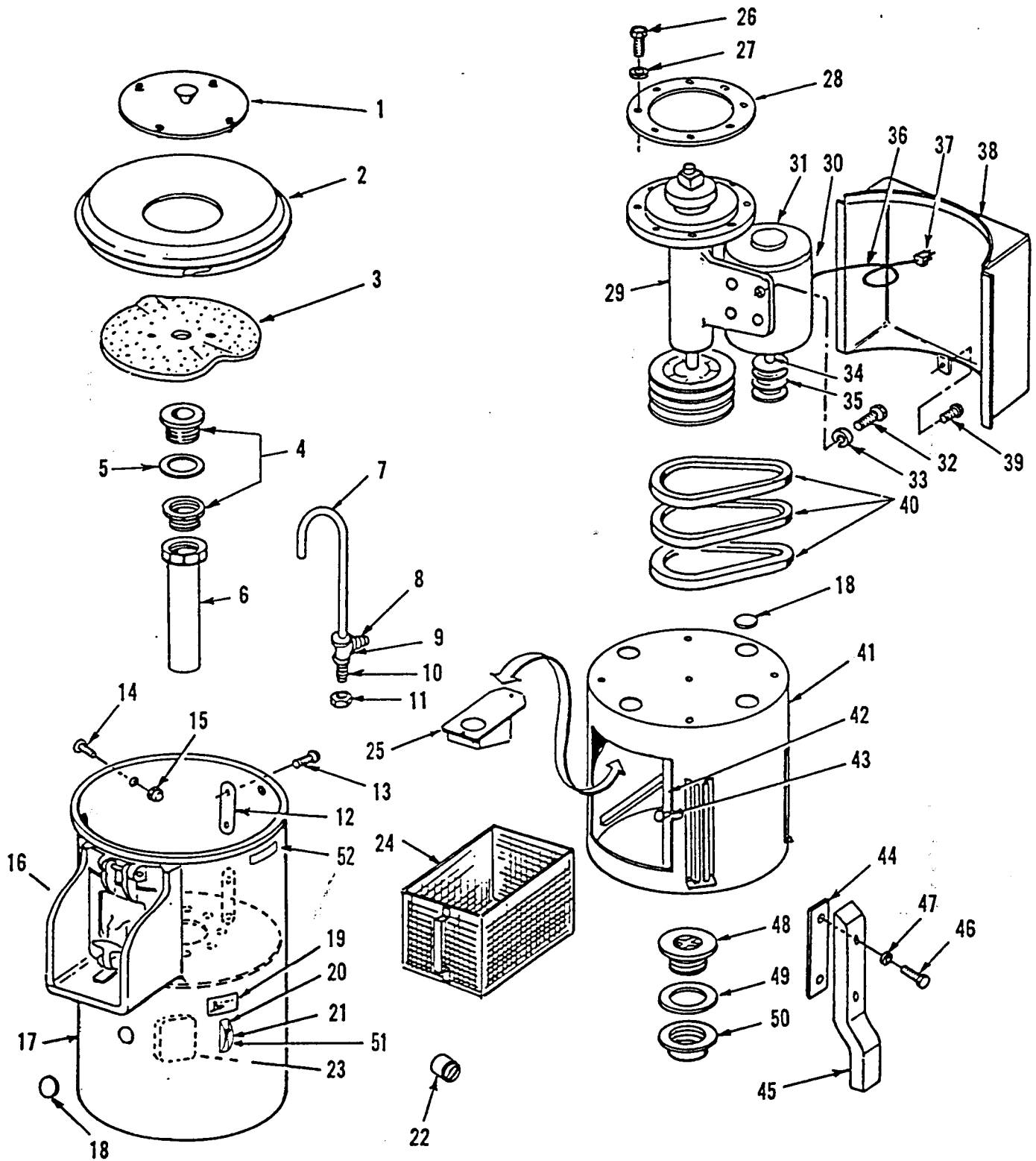


FIGURE 2
 MODELS XC-15, XC-30 & XC-60 PEELERS

MODELS XC-15, XC-30 & XC-60 PEELERS

Index No.	XC-15	XC-30	XC-60	Description	Qty.
1	P2-5100	P2-5100	P2-5100	SPLASH COVER	1
2	P2-5163	P2-5164	P2-5164	HOPPER, Plastic	1
3	P4-5270	P4-5271A	P4-5109	PEEL DISC	1
4	P1-5291	P1-5291	P1-5291	DRAIN CUP, with flanged Locknut	1
5	P1.5292	P1-5292	P1.5292	GASKET	1
6	P1-5293	P1-5294	P1-5294	WASTE TUBE w/ Locknut and Rubber Washer	1
7	P1.5066	P1-5066	P1-5066	SPRAY PIPE	1
8	P1-17238	P1-17238	P1-17238	NIPPLE, Dixon Style 3500	1
9	P1-17236	P1-17236	P1-17236	TEE, 1/4 x 1/4 x 3/8" Female	1
10	P1-5210	P1-5210	P1-5210	STUD, 1/2x3"	1
11	WO-14192	WO-14192	WO-14192	LOCKNUT, 1/2-13 Hex Jam Nut Cadm. Plated	1
12	P1-5272	P1-5272	P1-5272	LOBE, Peeler (XC-60 Qty. 3)	2
13	W1-10307	W1-10307	W1-10307	SCREW, 10/32 x 3/8" Ig. Rd. Hd. Mach. (XC-60 Qty. 6)	4
14	—	W1-11545	W1.11545	SCREW, 10/24 x 1/4" Ig. Rd. Hd. Mach.	4
15	—	P1-17252	P1-17252	NUT, 10/24 Cap	4
16	P4-5258	P4.5025	P4-5025	CHUTE AND DOOR ASSEMBLY (See Fig. 3 for Detail Parts)	1
17	P4-5212	P4-5231	P4-5232	HOUSING, Upper w/ Chute Casting	1
18	W1-7123	W1-7123	W1-7123	PLUG, Button	3
19	P1-5052	P1-5052	P1-5052	PLATE, Data	1
20	P1-5096	P1-5096	P1-5096	PLATE, Switch Cover	1
21	M1-15260	M1-15260	M1-15260	SWITCH, Toggle, 1 PH., Flush	1
21	P1-17203	P1-17203	P1-17203	SWITCH. Toggle, 3 PH., Flush	1
22	P2-5108	P2-5108	P2-5108	SWITCH, Timing, 1 PH. Only (Not Illust) (Opt)	1
22A	—	P2-5315	P2-5315	STARTER, 220/440V, w/115V Circuit Control (Opt)	1
23	P1-17250	P1-17250	P1-17250	ELECTRICAL BOX w/Cover	1
24	P4-5203	P4-5189	P4-5189	BASKET, Peel Trap	1
25	P3-5252	P3-5252	P2-5242	DEFLECTOR, Drain	1
26	W1-8148	W1-8148	W1-8148	CAPSCREW, 3/8 x 3/4" Ig.. S/S	8
27	W1-5567	W1-5567	W1-5567	WASHER, Plain 3/8" Cad. Pit.	8
28	P2-5040	P2-5040	P2-5040	GASKET	1
29	P4-5219	P4-5220	P4-5221	BEARING COLUMN ASSY, Complete (See Fig. 4 for Detail Parts)	1
30	M1-15388	M1-15388	M1-15388	CONNECTOR, 3/8"-90° (Not Illust.)	1
31	P1-5280	P1.5282	P1-5284	MOTOR, 1/3 HP (XC-15), 3/4 HP (XC-30), 1 HP (XC-60), 1 PH.	1
31	P1-5281	P1-5283	P1-5285	MOTOR, 1/3 HP (XC-15), 3/4 HP (XC-30), 1 HP (XC-60), 3 PH.	1
32	W1-7111	W1-7111	W1-7111	CAPSCREW, 5/16 x 3/4" Ig. Hex Hd.	4
33	P1-17235	P1-17235	P1-17235	LOCKWASHER, 5/16"	4
34	—	P1-5155	P1-5155	KEY, 3/16" sq. x 2" Ig.	1
35	P1-5111	P1-5007	P1-5134	SHEAVE	1
35A	P1-95068	P1-95067	P1-95067	SHEAVE for 50 Cycle Motors Only	1
36	P1-17214	—	—	CORD, No. 14 AWG, 3 Wire Conduct, 1 PH (Opt-XC-15 only)	6ft
36A	M1-15369	—	—	CORD, No. 14 AWG, 4 Wire Conduct, 3 PH (Opt.XC-15 only)	6ft
37	P1-17212	P1-17212	P1-17212	PLUG, Use with 3 Wire Cord, 120V, 1 PH, 15 Amp.	1
37A	M1-15374	M1-15374	M1-15374	PLUG, Use with 3 Wire Cord, 250V, 1 PH, 15 Amp	1
37B	PO-17213	P0-17213	PO-17213	PLUG, Use with 4 Wire Cord, 208/240V, 60C, 3 PH, 20 Amp	1
37C	PO-95603	PO-95603	PO-95603	PLUG, Use with 4 Wire Cord, 460/480V, 60C, 3 PH, 20 Amp	1
38	P4-5207	P4-5196	P4-5196	HOUSING, Motor	1
39	W1-5987	W1-5987	W1-5987	SCREW. 10-24 x 1/2" Pan Hd.	1
40	P1-15211	P1-15211	—	V-BELT, 31" Ig. (XC-15 & XC-30)	2
40	—	—	W1-8888	V-BELT, 32" Ig. (XC-60)	3
41	P4-5205	P4-5188	P4-5188	HOUSING, Lower Weldment	1
42	P2-17210	P2-17210	P2-17210	SLIDING DOOR, S/S	1
43	P1-17228	P1-17228	P1-17228	KNOB	1
43A	P1-17244	P1-17244	P1-17244	#8 LOCKWASHER for Door Knob	1
43B	W1-7476	W1-7476	W1-7476	SCREW for Door Knob	1
44	P1-5199	P1-5199	P1-5199	CLAMP BAR	4
45	P4-5195	P4-5195	P4-5195	LEG, Cast Aluminum	4
46	P1-17230	P1-17230	P1-17230	CAPSCREW, 3/8 x 1" Ig. Hex Hd.	8
47	W1-7524	W1-7524	W1-7524	LOCKWASHER, 3/8" Split	8
48	P1-17248	P1-17248	P1-17248	WASTE DRAIN, 2" Brass	1
49	P1-5236	P1-5236	P1-5236	GASKET	1
50	P1-17249	P1-17249	P1-17249	LOCKNUT, Pipe 2"	1
51	M1-95654	M1-95654	M1-95654	SWITCH GUARD	1
52	P1-95647	P1-95647	P1-95647	CAUTION LABEL	1

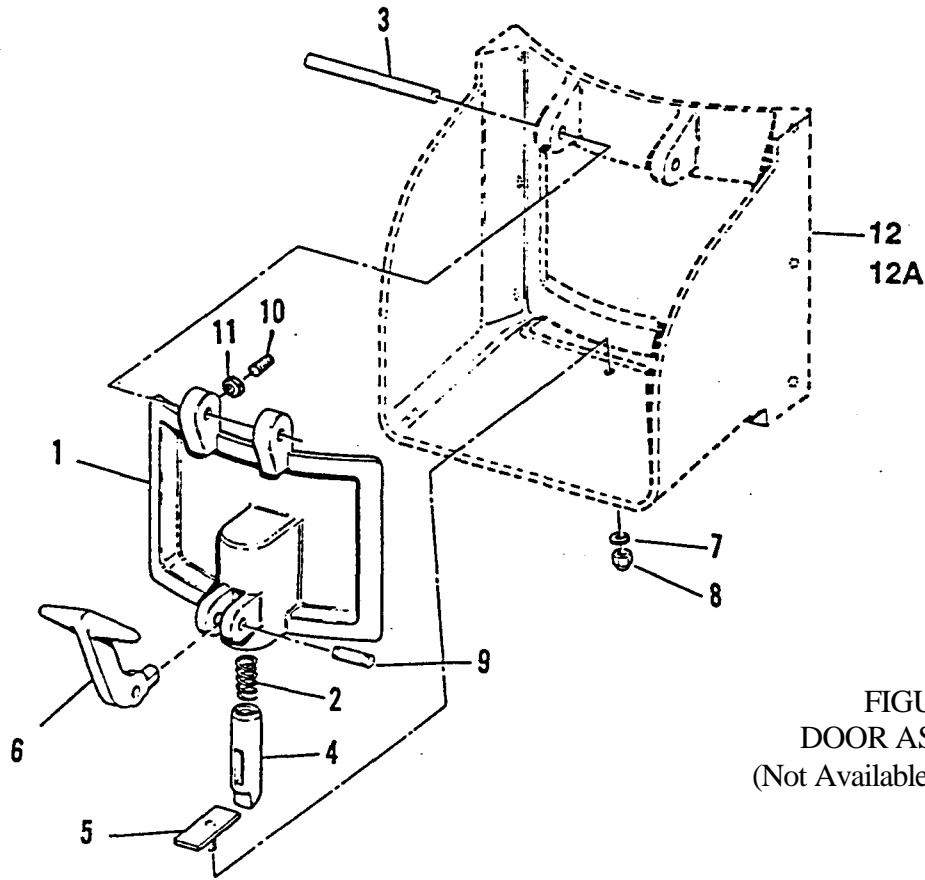


FIGURE 3
DOOR ASSEMBLY
(Not Available As Assembly)

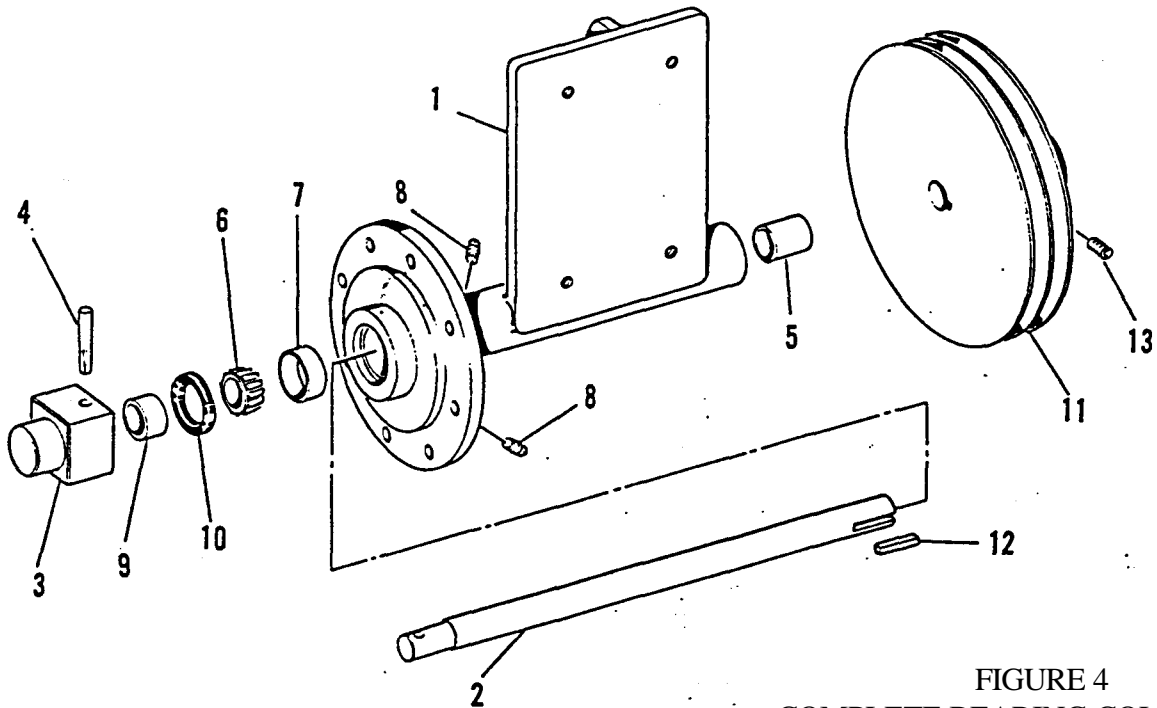


FIGURE 4
COMPLETE BEARING COLUMN
(Available As Assembly)
S-15 & XC-15 - P4-5219
XC-30 - P4-5220
XC-60 - P4-5221

S-15 & XC-15
XC-30
XC-60

Item No.	Part No.	Description	No. Reqd.
1	P4-5014	DOOR, Peeler	1
2	P1-5036	SPRING	1
3	P1-5254	PIN, Hinge	1
4	P1-5035	PLUNGER	1
5	P1-5030	LATCH JAM	1
6	P1-5037	HANDLE, Latch	1
7	W-1-7598	LOCKWASHER, 5/16, S/S	1
8	W-1-8138	CAP NUT. Brass, 5/16-18 S/S	1
9	P1-17231	DRIV-LOK PIN, S/S	1
10	P1-5269	BALL PLUNGER	1
11	W1-8132	JAM NUT, 10/32	1
12	P-4-5024	CHUTE CASTING S-15, XC-15	1
12A	P-4-5051	CHUTE CASTING XC-30, XC-60	1

Item No.	Part No.	Description	No. Reqd.
1	P4-5222	BEARING COLUMN (S-15, XC-15 & XC-30) } Select One	1
1	P4-5224		BEARING COLUMN (XC-60)
2	P2-5225	DRIVE SHAFT. Peel Disc (S-15, XC-15 & XC-30)	1
2	P2-5227	DRIVE SHAFT, Peel Disc (XC-60)	1
3	P1-5177	DRIVING BLOCK, Peel Disc	1
4	P1-17232	DRIV-LOK PIN, 1/4 x 2"	1
5	P1-17222	BUSHING, Plain	1
6	P1-17225	BEARING. Roller Cone	1
7	P1-17224	BEARING, Cup	1
8	P1-17233	PIPE PLUG, 1/8-27 N.P.T.	2
9	P1-5253	SPACER	1
10	P1-5274	OIL SEAL	1
11	P1-17229	PULLEY, 2 Groove (S-15, XC-15 & XC-30)	1
11	P3-5135	PULLEY, 3 Groove (XC-60)	1
12	P1-17242	KEY, 1/4" sq. x 1.1/2" lg. .	1
13	W1-7171	SETSCREW. 5/16 x 3/8" Ig. Cup Pt.	1

Item No.	Part No.	Description	No. Reqd
1	P4 - 5222	BEARING COLUMN (S-15, XC-15 & XC-30)	1
1	P4 - 5224	BEARING COLUMN (XC-60)	1
2	P2 - 5225	DRIVE SHAFT, Peel Disc (S-15, XC-15 & XC-30)	1
2	P2 - 5227	DRIVE SHAFT, Peel Disc (XC-60)	1
3	P1 - 5177	DRIVING BLOCK, Peel Disc	1
4	P1 - 17232	DRIV.LOK PIN, 1/4 x 2"	1
5	P0 - 70170	BALL BEARING	1
6	P1 - 17225	BEARING. Roller Cons	1
7	P1 - 17224	B3ARING, Cup	1
8	P1 - 17233	PIPE PLUG, 1/8-27 N.P.T.	2
9	P1 - 5253	SPACER	1
10	P1 - 5274	OIL SEAL	1
11	P1 - 17229	PULLEY, 2 Groove (S-15, XC-15 & XC-30)	1
11	P3 - 5135	PULLEY, 3 Groove (XC-60)	1
12	PI - 17242	KEY, 1/4" sq. x 1-1/2" lg.	1
13	W1 - 7171	SETSCREW, 6/16 x 3/8" lg.Cup Pt.	1

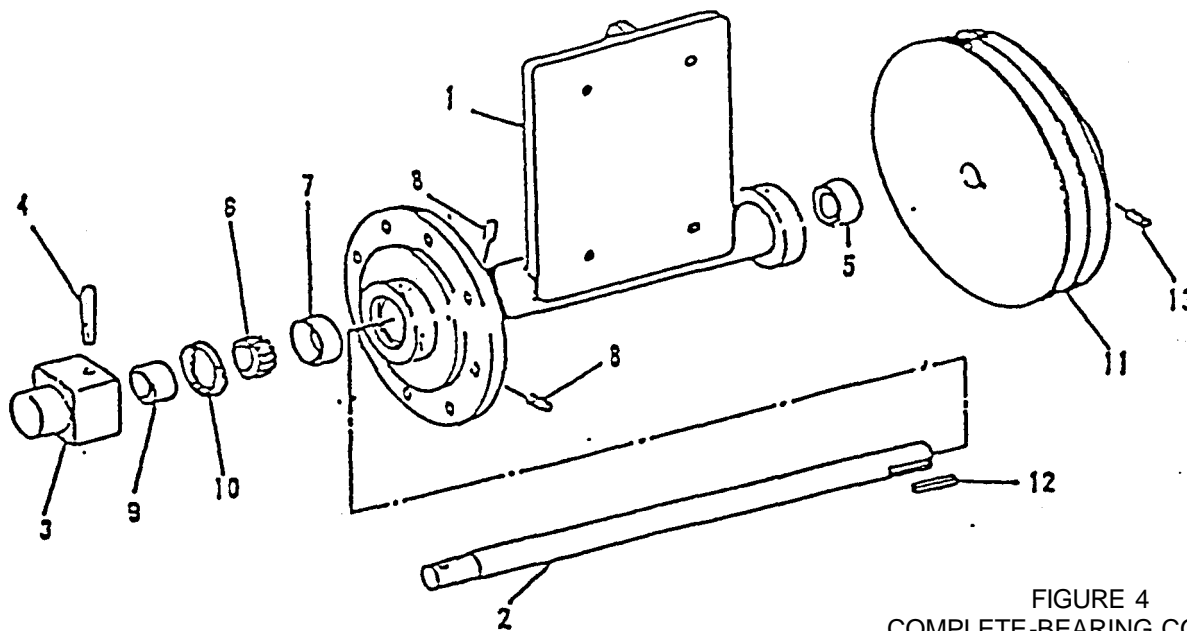
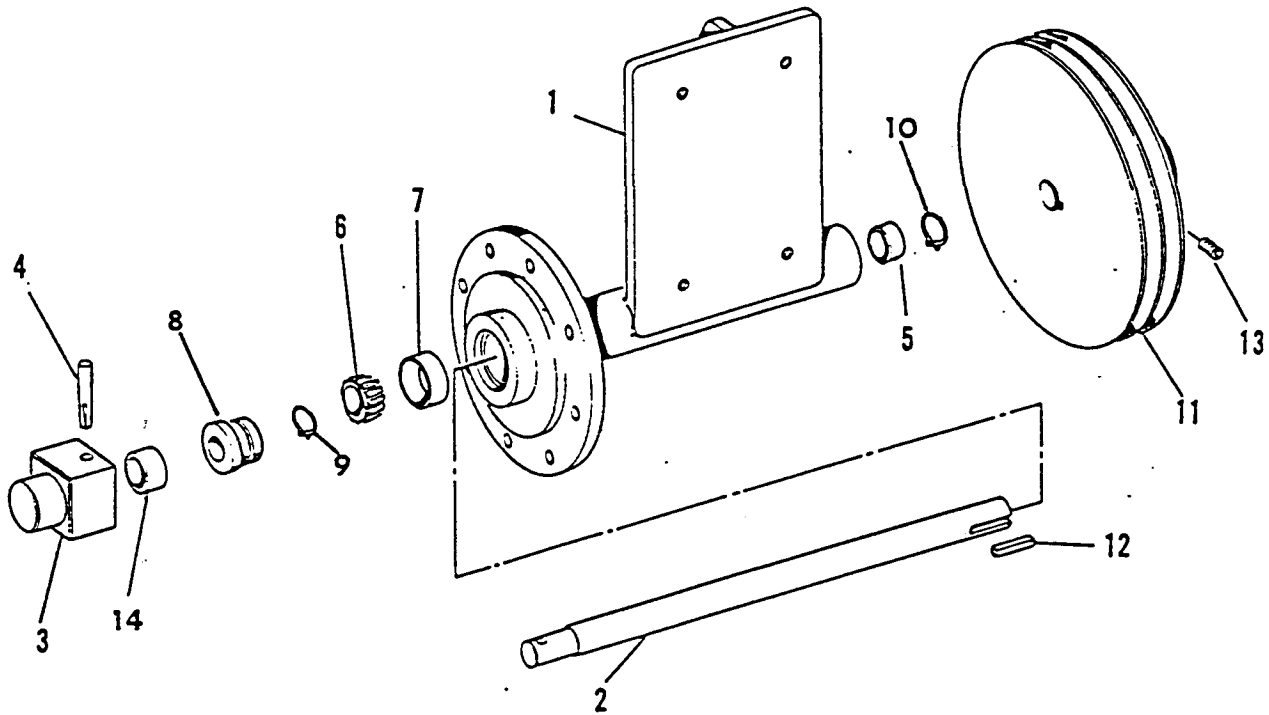


FIGURE 4
COMPLETE-BEARING COLUMN
(Available AB Assembly)
S-15 & XC-15 - P4-5219
XC-30 - P4-5220
XC-60 - P4-5221



Item No.	Part No.	Description	No. Reqd.
1	5222	BEARING COLUMN (S-15, XC-15 & XC-30)	1
1	5224	BEARING COLUMN (XC-60)	1
2	73195	DRIVE SHAFT (S-15, XC-15 & XC-30)	1
2	73196	DRIVE SHAFT (XC-60)	1
3	73197	DRIVE BLOCK	1
4	17232	DRIV-LOCK PIN	1
5	70170	BALL BEARING	1
6	17225	TIMKEN CONE	1
7	17224	TIMKEN CUP	1
8.	2255	SHAFT SEAL ASS'Y.	1
9	3488	RETAINING RING	1
10	73203	RETAINING RING	1
11	17229	PULLEY (S-15, SC-15 & XC-30)	1
11	5135	PULLEY (XC-60)	1
12	17242	KEY	1
13	7117	SET SCREW	1
14	73198	SPACER	1

Used on machines with serial number suffix A A B and up.

Figure 4A

PEELER TROUBLE SHOOTING CHART

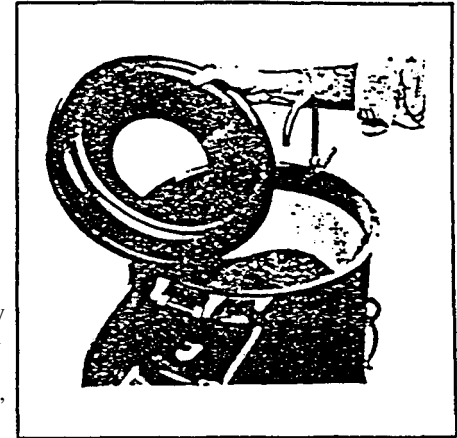
TYPE OF TROUBLE	REASON	CORRECTIVE MEASURE
Peeler will not start	Main Fuse or Circuit Breaker	Change fuses or reset circuit breaker
Wire loose or broken	Overload switch tripped	Push reset button Visually check all connections, controls & motor Check switch
Motor runs but peeler disc does not run	Belt broken or slipping	Adjust belt tension or replace broken belts
Peeler runs hot or smokes	Improper voltage on motor or motor defective Motor overloaded thus overheating Bearing column tight not free running	Check incoming voltage and motor Check amperage draw Grease by removing plug at center bearing and grease with an Elimate grease gun Use SHELL DARINA 2 grease or equivalent
Peeler makes noise when running	Worn out bearings	Replace bearings P1-17225 Timken Cone P1-17224 Timken Cup P1-17222 Bushing and oil seal P1-5274
Peeler leaks water at the center bearing	Defective seal	Replace seal P1-5274 Also check the bearing
Peeler won't peel potatoes	Worn peeler abrasive disc Peeler liner worn smooth On models made prior to 1-1-68 Peeler overloaded	Replace abrasive disc P4-5270 XC15 P4-5271 XC30 P4-5109 XC60 Replace liner with P1-5272 peeler lobes Use proper amount of potatoes for your type of peeler (See Owners Manual)
Flat spots on Idaho potatoes	Potatoes are too long	Cut Idaho potatoes in half before inserting in machine
Water splashes out when peeling potatoes	Too much water pressure or Splash cover missing	Turn water valve down to regulate Replace splash cover p/n P2-5100
Water leaking on floor	Peel trap basket full of peelings Lower drain plugged up	Empty peel trap basket Clean or rod out drain

INSTRUCTIONS FOR INSTALLATION , OPERATION AND MAINTENANCE OF BLAKESLEE POTATO AND VEGETABLE PEELERS

INSTALLATION

Place your Blakeslee Peeler where the most evident operation is assured. The Peeler should be placed so that the peeled potatoes can be discharged into a sink. If your Peeler was supplied in the bench model, then the Peeler should be Installed with room for the potatoes to discharge into a metal container so that the peeled potatoes can be submerged in water, as peeled potatoes must be kept under water to prevent their turning black. The Potato Peeler is equipped with a removable strainer basket that catches the peelings. This strainer basket is removed through the access door in the base of the Peeler, so when installing your Peeler, be sure there is ample room to permit easy removal of the strainer basket. NOTE: XC (floor) model peelers are shipped with the unload door and strainer directly over one another. It is possible to have the strainer basket in a different position. Simply remove the attaching bolts, move the bottom cylinder In increments of 90° until you obtain the desired position and reinstall attaching bolts.

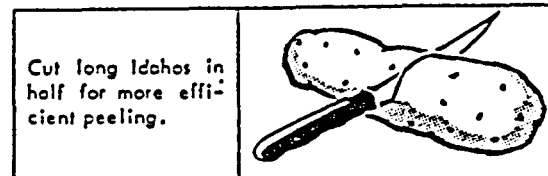
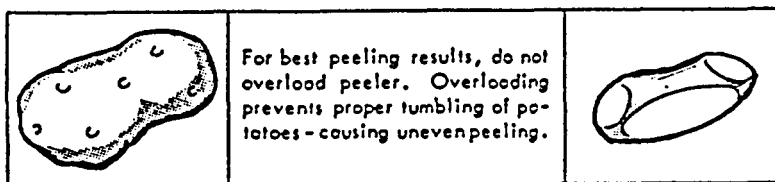
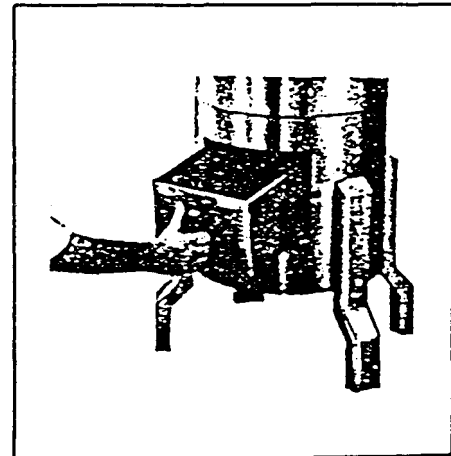
When you have selected the proper location for the Peeler, it is then necessary to connect the motor, the drain, and make a cold water connection to the spray inlet on the top of the Peeler. Before making the electrical, connection, be sure that the electrical specifications on the tag attached to the motor correspond to the available electrical current. The drain pipe should be 2" or larger all the way with as much downward pitch as possible and without any sharp bends for good drainage. A 3/8" cold water supply line should be connected to the back of the machine. A hose bibb, to which a hose may be attached, is recommended for cleaning the Peeler after It has been used.



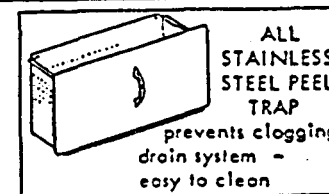
OPERATION

Before operating the Peeler, be sure that the peeling disc and cover and the peel trap strainer basket are all In place, then adjust the cock or valve for the correct flow of water into the peeling chamber. Next turn on the motor and then put in the potatoes. Be careful not to overload the machine as when the peeling chamber is overloaded, the potatoes will not tumble and roll properly and there will be more waste than is necessary. Overloading the peeling chamber can also cause uneven peeling, or what is commonly called "flats". When peeling long Idaho potatoes, it's often advisable to cut them in half for efficient peeling. Always be sure to turn on the motor the peeling disc is In motion before the potatoes are dumped into the peeling chamber, as filling the peeling chamber first and then starting the motor tends to overload the motor and the potatoes do not tumble and roll for even peeling. It is very desirable to have a container as a measure that will hold Just the right quantity of potatoes, 15, 20 or 60 lbs., as the model indicates, as such a measure is insurance against overloading.

The time required for peeling a charge of potatoes depends greatly on the condition and age of the potatoes. New potatoes are peeled very quickly, whereas old potatoes require a longer time for peeling. Potatoes that are being peeled for potato chips are generally peeled very lightly. Potatoes that are going to be mashed should be peeled more thoroughly. The progress of the peeling can be watched and sometimes It Is advisable to lift out a-few potatoes to examine the extent of the peeling that has been accomplished.



To discharge the peeled potatoes, merely open the door of the peeling chamber and the peeled potatoes will automatically throw out. After the peeled potatoes have been discharged, turn off the water and the motor. Do not peel the eyes out of the potatoes as it is much more economical to trim out the eyes by hand after peeling. When peeling large quantities of potatoes, empty the peel trap strainer basket frequently.



CLEANING

When all of the potatoes and vegetables have been peeled, and before the inside of the peeler has had time to dry, remove the cover, and the peeling disc and hose out the Inside of the peeler. Always remember to empty and clean the peel trap strainer basket.

CAUTION: Be sure motor is connected so peeling disc operates in clockwise direction. This Is very important as if motor is running backwards, peeler cover will fly off when potatoes are being peeled.

BLAKESLEE & CO.
Otero, Illinois 60650
BLAKESLEE & CO., LIMITED
Scarborough, Ontario MIR/363