



## ILLUSTRATED PARTS LIST

**BLAKESLEE**

# Potato and Vegetable Peelers

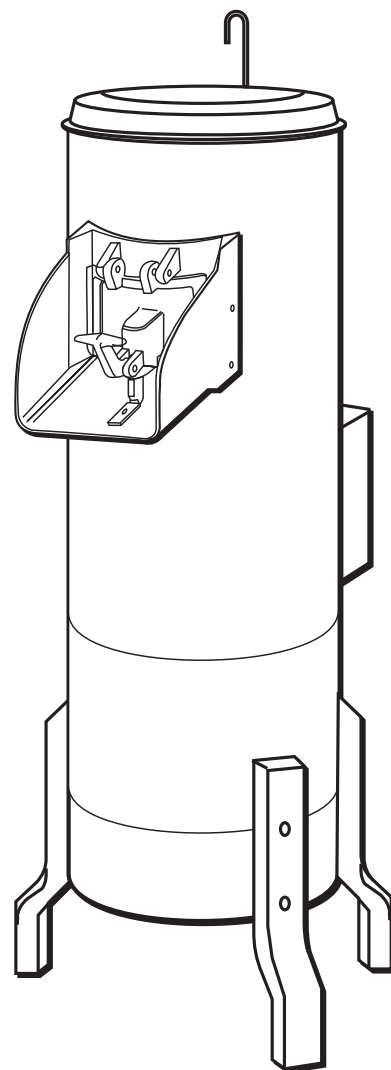
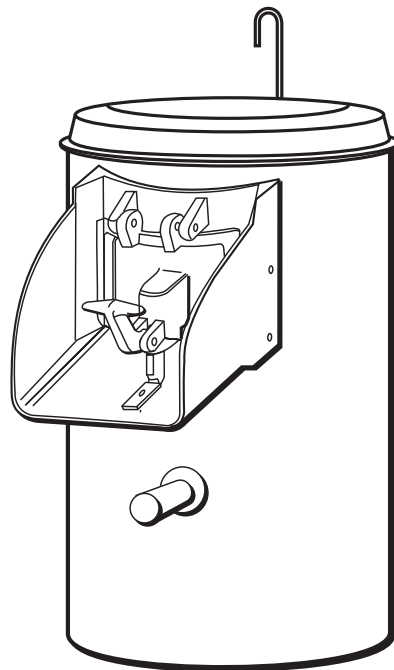
### MODELS:

**S-15**

**XC-15**

**XC-30**

**XC-60**



## Notes



**Table of Contents**

Page	DESCRIPTION
1	Table of Contents
2	Installation & Operation
3	Operation (Cont.) & Cleaning
4	Model S-15 Peeler Breakdown - Figure 1
5	Model S-15 Peeler Part Numbers
6	Model S-15 Peeler Breakdown (Cont.)
7	Model S-15 Peeler Part Numbers (Cont.)
8	Models XC-15, XC-30 & XC-60 Breakdown – Figure 2
9	Models XC-15, XC-30 & XC-60 Part Numbers
10	Models XC-15, XC-30 & XC-60 Breakdown (Cont.)
11	Models XC-15, XC-30 & XC-60 Part Numbers (Cont.)
12	Bearing Column Figure 3 - Serial No. up to 1 AAA
13	Bearing Column Figure 4 - Serial No. Suffix AAB and up
14	Bearing Column Figure 5 - Serial No. Suffix BAB and up
15	Door Assembly Figure 6
16	Troubleshooting Chart

# Illustrated Parts Manual

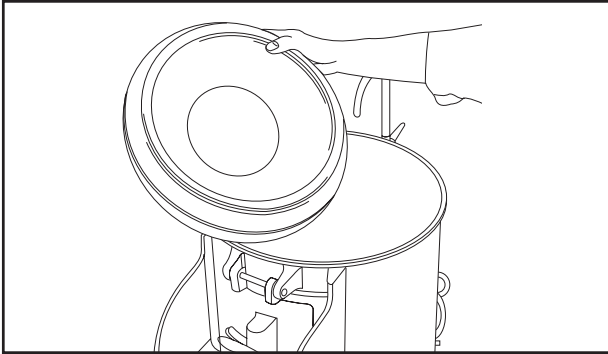
Models S-15, XC-15, XC-30, XC-60



BLAKESLEE

## Potato and Vegetable Peelers

### INSTALLATION



1. Place your Blakeslee Peeler where the most efficient operation is assured. The Peeler should be placed so that the peeled potatoes can be discharged into a sink.

**NOTE: If your Peeler was supplied in the bench model, then the Peeler should be installed with room for the potatoes to discharge into a metal container so that the peeled potatoes can be submerged in water, as peeled potatoes must be kept under water to prevent their turning black.**

2. The Potato Peeler is equipped with a removable strainer basket that catches the peelings. This strainer basket is removed through the access door in the base of the Peeler. When installing your Peeler, be sure there is ample room to permit easy removal of the strainer basket.

**NOTE: XC (floor) model peelers are shipped with the unload door and strainer directly over one another.**

3. It is possible to have the strainer basket in a different position. Simply remove the attaching bolts, move the bottom cylinder in increments of 90° until the desired position is obtained and reinstall attaching bolts.

**NOTE: When you have selected the proper location for the Peeler, it is then necessary to connect the motor, the drain, and make a cold water connection to the spray inlet on the top of the Peeler.**

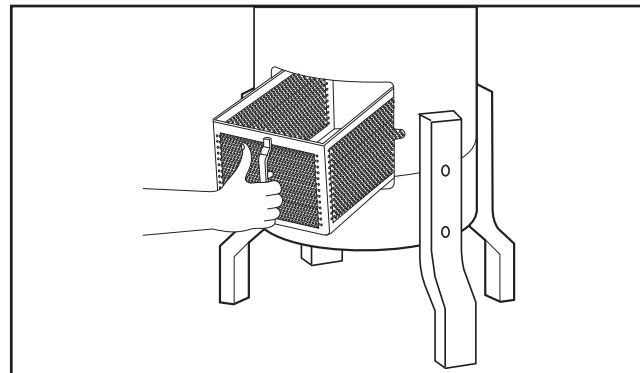
4. Before making the electrical connection, be sure that the electrical specifications on the tag

attached to the motor correspond to the available electrical current.

5. The drain pipe should be 2" or larger all the way with as much downward pitch as possible and without any sharp bends for good drainage. A 3/8" cold water supply line should be connected to the back of the machine. A hose bibb, to which a hose may be attached, is recommended for cleaning the peeler after it has been used.

### OPERATION

1. Before operating the Peeler, be sure that the peeling disc and cover and the peel trap strainer basket are all in place, then adjust the cock or valve for the correct flow of water into the peeling chamber.
2. Turn on the motor and then put in the potatoes.



**NOTE: Be careful not to overload the machine. When the peeling chamber is overloaded, the potatoes will not tumble and roll properly and there will be more waste than is necessary. Overloading the peeling chamber can also cause uneven peeling, or what is commonly called "flats".**

3. When peeling long Idaho potatoes, it is often advisable to cut them in half for efficient peeling.
4. Always be sure to turn on the motor so that the peeling disc is in motion before the potatoes are dumped into the peeling chamber. Filling the potato chamber first and then starting the motor



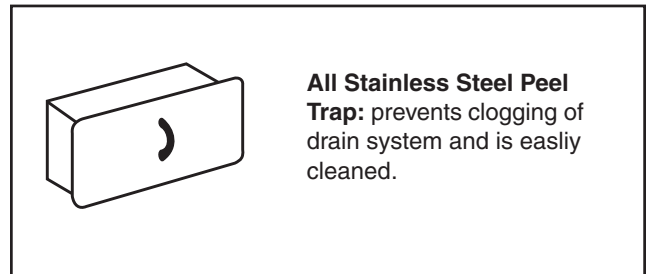
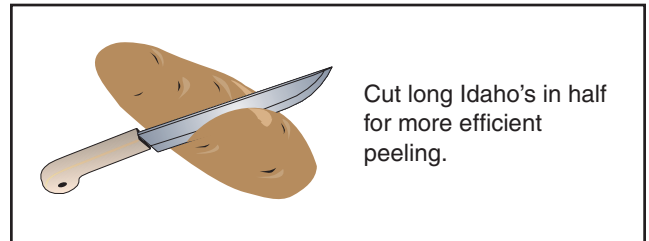
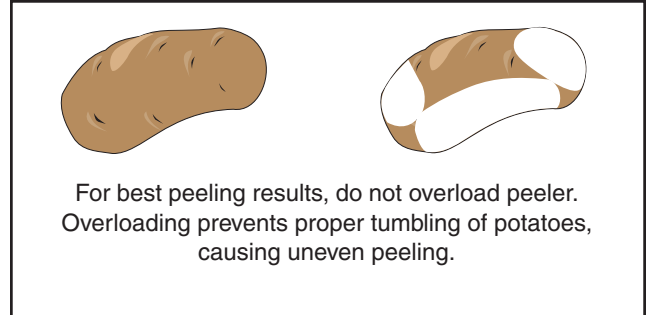
## OPERATION (Cont.)

tends to overload the motor and the potatoes do not tumble and roll for easy peeling.

**NOTE: It is very desirable to have a container as a measure that will hold just the right quantity of potatoes. 15, 20, or 60 lbs., as the model indicates as such a measure is insurance against overloading.**

The time required for peeling a charge of potatoes depends greatly on the condition and age of the potatoes. New potatoes are peeled very quickly, whereas old potatoes require a longer time for peeling. Potatoes that are being peeled for potato chips are generally packed very lightly. Potatoes that are going to be mashed should be peeled more thoroughly. This progress of the peeling can be watched and sometimes it is advisable to lift out a few potatoes to examine the extent of the peeling that has been accomplished.

To discharge the peeled potatoes, merely open the door of the peeling chamber and the peeled potatoes will automatically be thrown out. After the peeled potatoes have been discharged, turn off the water and the motor. Do not peel the eyes out of the potatoes as it is much more economical to trim out the eyes by hand after peeling. When peeling large quantities of potatoes, empty the peel trap strainer basket frequently.



## CLEANING

When all of the potatoes and vegetables have been peeled, and before the inside of the peeler has had time to dry, remove the cover and the peeling disc and hose out the inside of the peeler. Always remember to empty and clean the peel trap strainer basket.

**CAUTION: Be sure motor is connected so peeling disc operates in clockwise direction. This is very important as if motor is running backwards, peeler cover will fly off when potatoes are being peeled.**

# Illustrated Parts Manual

Models S-15, XC-15, XC-30, XC-60



BLAKESLEE

Potato and Vegetable Peelers

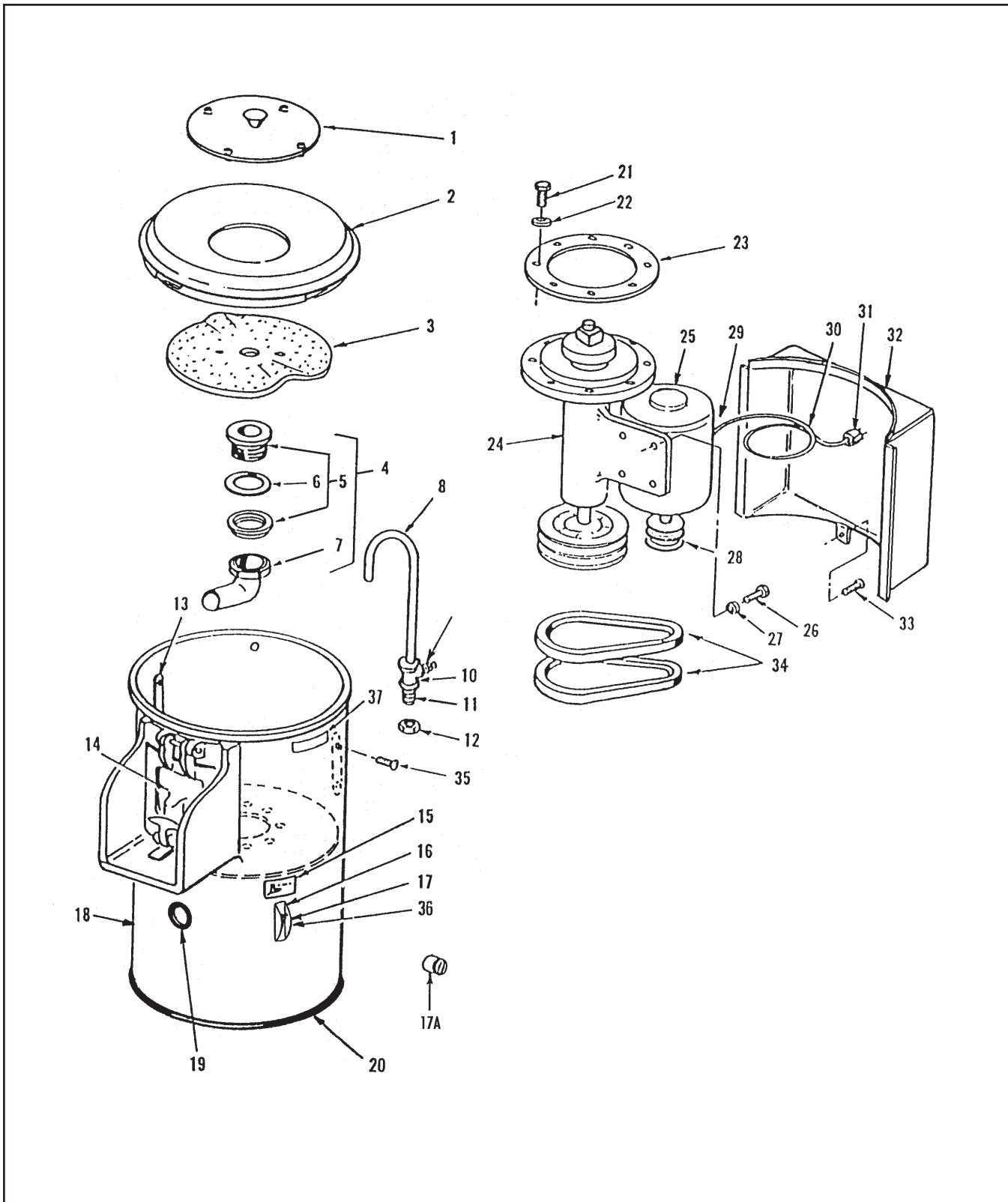


Figure 1. Model S-15 Peeler



**BLAKESLEE**

# Illustrated Parts Manual

Models S-15, XC-15, XC-30, XC-60

**Potato and Vegetable Peelers**

**Figure 1. Model S-15 Peeler**

Index No.	Part No.	Description	No. Reqd.
1	P2-5100	SPLASH COVER	1
2	P2-5163	HOPPER, Plastic	1
3	P4-5270	PEEL, DISC	1
4	P2-5144	DRAIN ASSEMBLY, (Consists of items 5, 6, &, 7)	1
5	P1-5291	DRAIN CUP w/Flanged Locknut	1
6	P1-5292	GASKET	1
7	P1-5295	WASTE TUBE w/Locknut and Rubber Washer	1
8	P1-5066	SPRAY PIPE	1
9	P1-17238	NIPPLE, Dixon Style 3500	1
10	P1-17236	TEE, ¼ X 3/8" Female	1
11	P1-5210	STUD, ½ X 3"	1
12	WO-14192	LOCKNUT, ½ X 13 Hex Jam Nut, Cadm Plated	1
13	P1-5272	LOBE, Peeler	2
14	P4-5258	DOOR ASSEMBLY, (See Fig. 3 for Detail Parts)	1
15	P1-5052	PLATE, Data	1
16	P1-5096	PLATE, Switch Cover	1
17	P1-15260	SWITCH, Toggle, 1 PIL, Flush	1
17	P1-17203	SWITCH, Toggle, 3 PIL, Flush	1
17A	P-2-05108	SWITCH, Timing 1ph. Only (opt.)	
18	P4-5212	HOUSING, Upper w/Chute Casting	1
19	P1-17246	RUBBER GROMMET	1
20	P1-17247	GASKET, Channel	1
21	W1-8148	CAPSCREW, 3/8 X ¾" lg., S/S	8
22	W1-5587	WASHER, Plain 3/8", S/S	8
23	P2-5010	GASKET	1
24	P4-5220	BEARING COLUMN ASSEMBLY, Complete (See Fig. 4 for detail parts)	1
25	P1-5280	MOTOR, 1/3 H.P., 1 PH., 115/230V	1
25	P1-5281	MOTOR, 1/3 H.P., 3 PH., 220V	1
26	W1-7111	CAPSCREW, 5/16 X ¾" lg. Hex Hd.	4
27	W-1-5587	LOCKWASHER, 5/16", S/S	4
28	P1-5111	SHEAVE (2 Groove)	1
29	M1-15388	CONNECTOR, 3/8" 90° (Not Illustrated)	1
30	P1-17214	CORD, No. 14 AWG, 3 Wire Cond. 1 PH.	6 Ft.
30	M1-15369	CORD, No. 14 AWG, 4 Wire Cond. 3 PH.	6 Ft.

# Illustrated Parts Manual

Models S-15, XC-15, XC-30, XC-60



BLAKESLEE

Potato and Vegetable Peelers

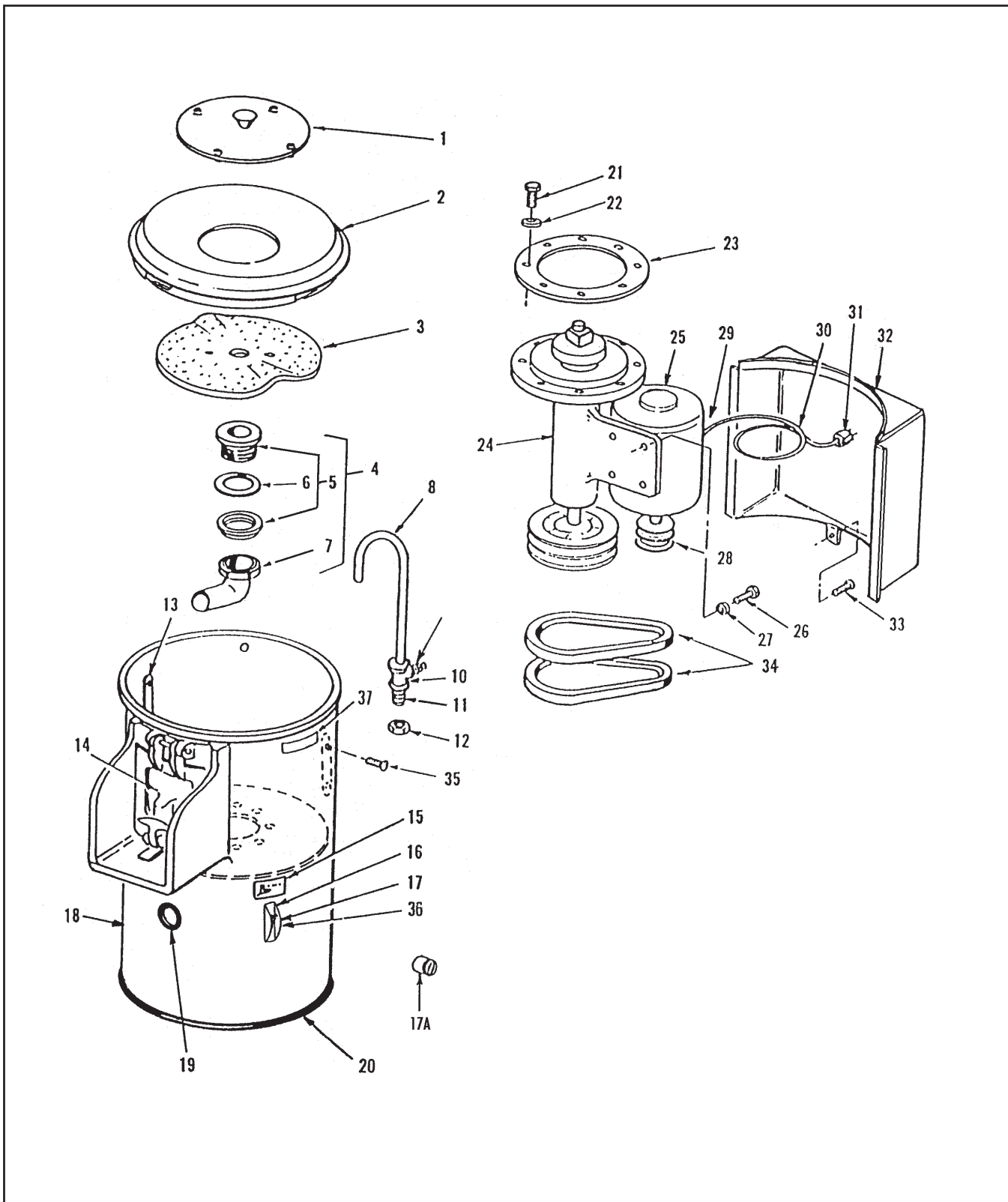


Figure 1. Model S-15 Peeler (Continued)





**BLAKESLEE**

# Illustrated Parts Manual

Models S-15, XC-15, XC-30, XC-60

Potato and Vegetable Peelers

**Table 1.** Model S-15 Peeler (Continued)

Index No.	Part No.	Description	No. Reqd.
31	P1-17212	PLUG, Use with 3 Wire Cord, 120V, 1 PH., 15 Amp.	1
31A	M1-15374	PLUG, Use with 3 Wire Cord, 250V, 1 PH., 15 Amp.	1
31B	PO-17213	PLUG, Use with 4 Wire Cord, 208/240V, 3 PH., 20 Amp.	1
31C	PO-95603	PLUG, Use with 4 Wire Cord, 480V, 3 PH., 20 Amp.	1
32	P4-5207	HOUSING, Motor Cover	1
33	W1-5987	SCREW, 10-24 X 1/2" Pan Hd.	1
34	P1-15211	V-BELT, 31" lg.	2
35	W1-10307	SCREW, 10/32 X 3/8" lg., Rd Hd. Mach.	4
36	M1-95654	SWITCH GUARD	1
37	P1-95647	CAUTION LABEL	1

# Illustrated Parts Manual

Models S-15, XC-15, XC-30, XC-60



BLAKESLEE

Potato and Vegetable Peelers

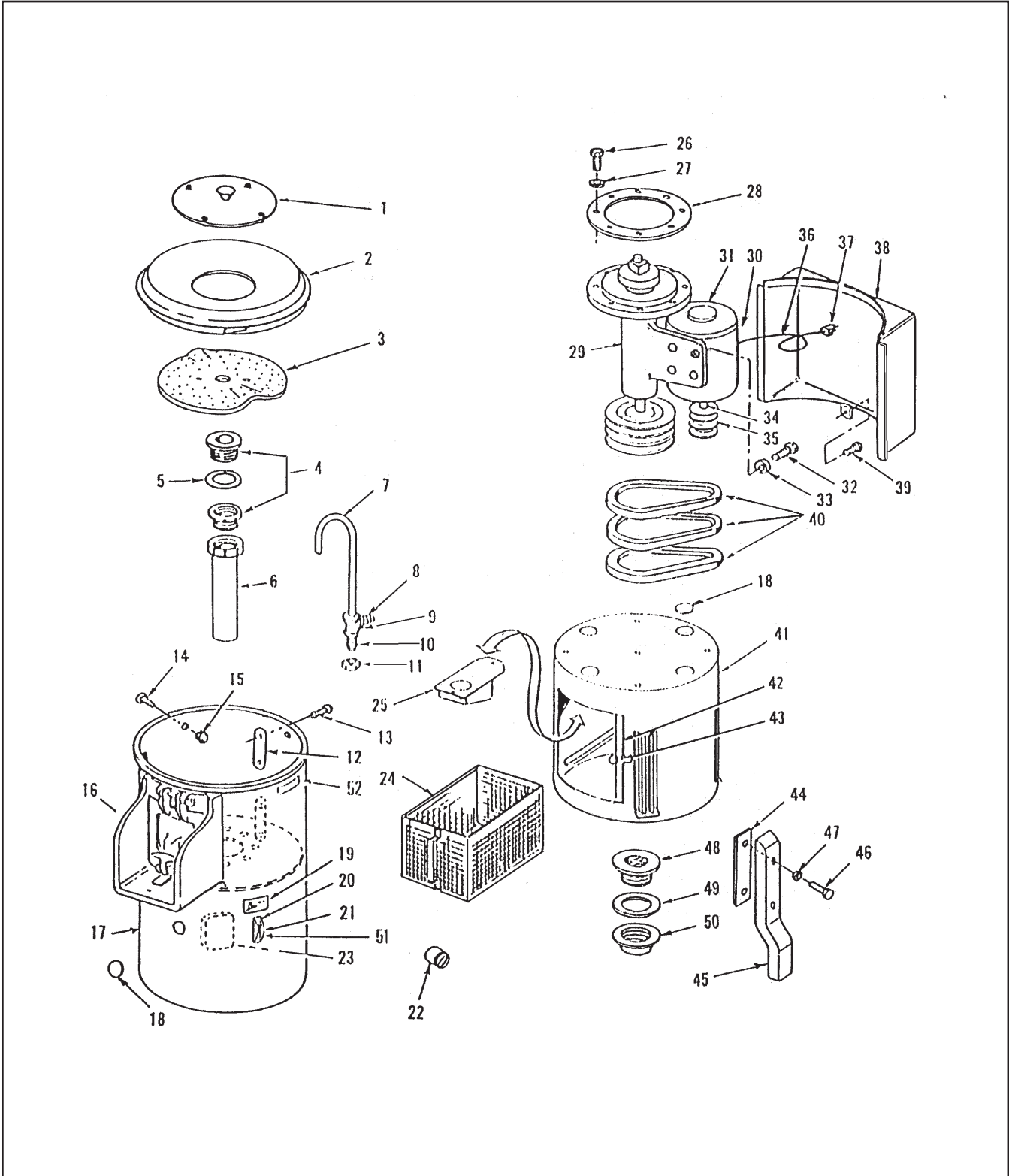


Figure 2. Models XC-15, XC-30 & XC-60 Peelers



**BLAKESLEE**

# Illustrated Parts Manual

## Models S-15, XC-15, XC-30, XC-60

**Potato and Vegetable Peelers**

**Figure 2. Models XC-15, XC-30 & XC-60 Peelers**

Index No.	XC-15	XC-30	XC-60	Description	Qty
1	P2-5100	P2-5100	P2-5100	SPLASH COVER	1
2	P2-5163	P2-5164	P2-5164	HOPPER, Plastic	1
3	P4-5270	P4-5109	P4-5109	PEEL DISC	1
4	P1-5291	P1-5291	P1-5291	DRAIN PLUG, with flanged Locknut	1
5	P1-5292	P1-5292	P1-5292	GASKET	1
6	P1-5293	P1-5291	P1-5294	WASTER TUBE w/Locknut and Rubber Washer	1
7	P1-5066	P1-5066	P1-5066	SPRAY PIPE	1
8	P1-17238	P1-17238	P1-17238	NIPPLE, Dixon Style 3500	1
9	P1-17236	P1-17236	P1-17236	TEE, ¼ X 1/4" Female	1
10	P1-5210	P1-5210	P1-5210	STUD, ½ X 3"	1
11	WO-14192	WO-14192	WO-14192	LOCKNUT, ½ X 13 Hex Jam Nut, Cadm Plated	1
12	P1-5272	P1-5272	P1-5272	LOBE, Peeler	2
13	W1-10307	W1-10307	W1-10307	SCREW, 10/32 X 3/8" lg. Rd Hd. Mach. (XC-60 Qty 6)	4
14	W1-11515	W1-11515	W1-11515	SCREW, 10/24 X 1/4" lg. Rd Hd. Mach.	4
15	P1-17252	P1-17252	P1-17252	NUT, 10/24 Cap	4
16	P4-5258	P4-5025	P4-5025	CHUTE AND DOOR ASSEMBLY, (See Fig. 3 for detail parts)	1
17	P4-5212	P4-5231	P4-5232	HOUSING, Upper w/Chute Casting	1
18	W1-7123	W1-7123	W1-7123	PLUG, Button	3
19	P1-5052	P1-5052	P1-5052	PLATE, Data	1
20	P1-5096	P1-5096	P1-5096	PLATE, Switch Cover	1
21	P1-15260	P1-15260	P1-15260	SWITCH, Toggle, 1 PIL, Flush	1
21	P1-17203	P1-17203	P1-17203	SWITCH, Toggle, 3 PIL, Flush	1
22	P-2-05108	P-2-05108	P-2-05108	SWITCH, Timing 1ph. Only (opt.)	1
23	P1-17250	P1-17250	P1-17250	ELECTRICAL BOX w/Cover	1
24	P4-5203	P1-5189	P1-5189	BASKET, Peel Trap	1
25	P3-5252	P3-5252	P2-5252	DEFLECTOR, Drain	1
26	W1-8148	W1-8148	W1-8148	CAPSCREW, 3/8 X ¾" lg., S/S	8
27	W1-5587	W1-5587	W1-5587	WASHER, Plain 3/8", S/S	8
28	P2-5010	P2-5010	P2-5010	GASKET	1
29	P4-5220	P4-5220	P4-5221	BEARING COLUMN ASSEMBLY, Complete (See Fig. 4 for detail parts)	1
30	M1-15388	M1-15388	M1-15388	CONNECTOR, 3/8", 90° (Not Illustrated)	1
31	P1-5280	P1-5282	P1-5281	MOTOR, 1/3 H.P., (XC-15), ¼ HP (XC-30), 1 HP (HC-60) 1 PH.	1
31	P1-5281	P1-5283	P1-5285	MOTOR, 1/3 H.P., (XC-15), ¼ HP (XC-30), 1 HP (HC-60) 3 PH.	1
32	W1-7111	W1-7111	W1-7111	CAPSCREW, 5/16 X ¾" lg. Hex Hd.	4

# Illustrated Parts Manual

Models S-15, XC-15, XC-30, XC-60



BLAKESLEE

Potato and Vegetable Peelers

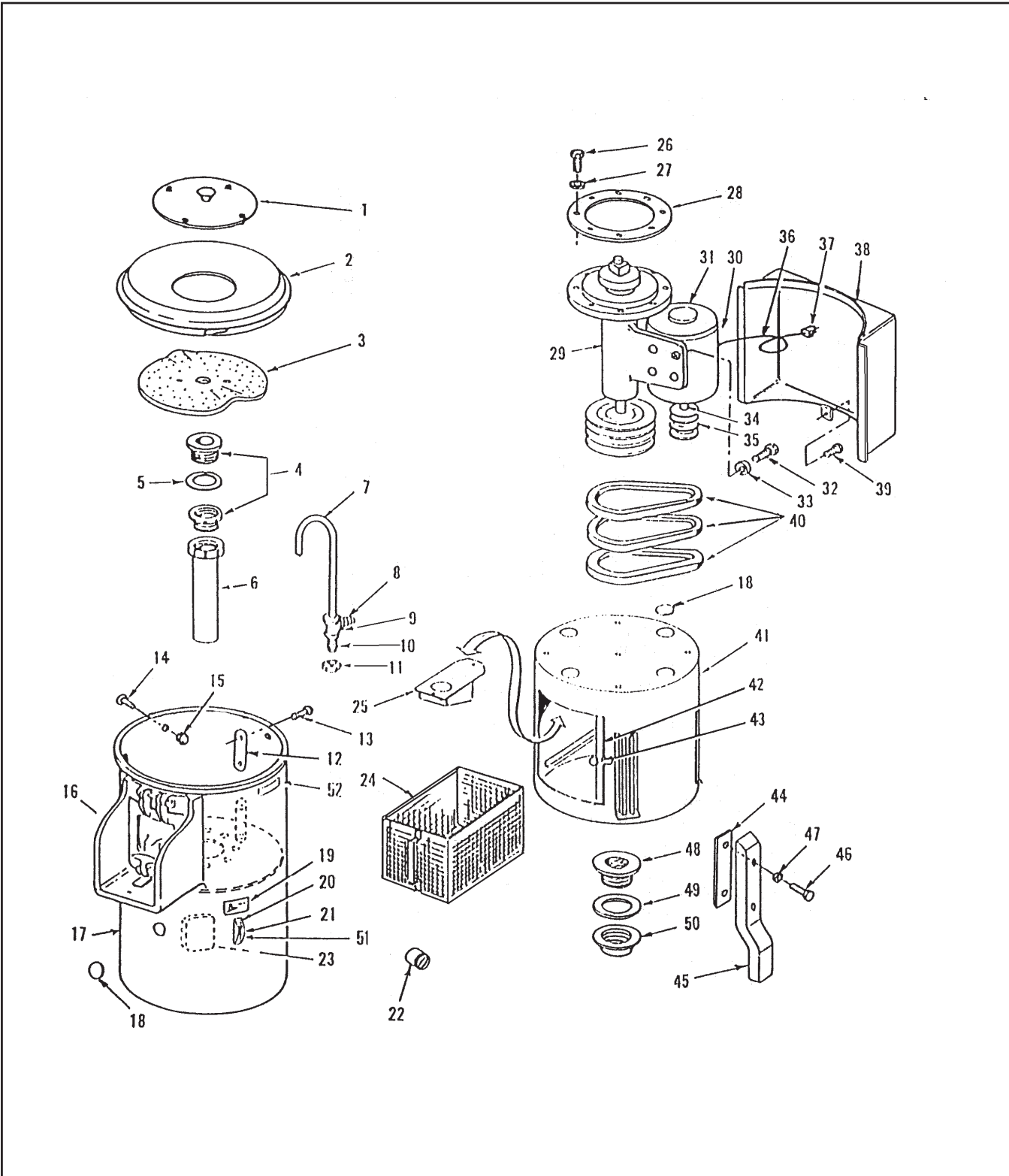


Figure 2. Models XC-15, XC-30 & XC-60 Peelers (Continued)



**BLAKESLEE**

# Illustrated Parts Manual

## Models S-15, XC-15, XC-30, XC-60

**Potato and Vegetable Peelers**

**Table 2.** Models XC-15, XC-30 & XC-60 Peelers (Continued)

Index No.	XC-15	XC-30	XC-60	Description	Qty
33	P1-17235	P1-17235	P1-17235	LOCKWASHER, 5/16"	4
34	-	P1-5155	P1-5155	KEY, 3/16" X 2" lg.	1
35	P1-5111	P1-5007	P1-5131	SHEAVE	1
35A	P1-95068	P1-95067	P1-95067	SHEAVE for 50 Cycle Motors Only	1
36	P1-17214	-	-	CORD, No. 14 AWG, 3 Wire Cond. 1 PH. (Opt XC-15)	6 Ft.
36A	M1-15369	-	-	CORD, No. 14 AWG, 4 Wire Cond. 3 PH. (Opt XC-15)	6 Ft.
37	P1-17212	P1-17212	P1-17212	PLUG, Use with 3 Wire Cord, 120V, 1 PH., 15 Amp.	1
37A	M1-15374	M1-15374	M1-15374	PLUG, Use with 3 Wire Cord, 250V, 1 PH., 15 Amp.	1
37B	PO-17213	PO-17213	PO-17213	PLUG, Use with 4 Wire Cord, 208/240V, 60C, 3 PH., 20 Amp.	1
37C	PO-95603	PO-95603	PO-95603	PLUG, Use with 4 Wire Cord, 480V, 60C, 3 PH., 20 Amp.	1
38	P4-5207	P4-5196	P4-5196	HOUSING, Motor Cover	1
39	W1-5987	W1-5987	W1-5987	SCREW, 10-24 X 1/2" Pan Hd.	1
40	P1-15211	P1-15211	-	V-BELT, 31" lg. (XC-15 & XC-30)	2
40	-	-	W1-8888	V-BELT, 31" lg. (XC-60)	3
41	P4-5205	P4-5188	P4-5188	HOUSING, Lower Weldment	1
42	P2-17210	P2-17210	P2-17210	SIDING DOOR, S/S	1
43	P1-17228	P1-17228	P1-17228	Knob assembly, includes Item 43 Knob, 43A Lockwasher & 43B Screw	1
43A	P1-17244	P1-17244	P1-17244	#8 LOCKWASHER	1
43B	W1-7476	W1-7476	W1-7476	SCREW	1
44	P1-5199	P1-5199	P1-5199	CLAMP BAR	4
45	P4-5195	P4-5195	P4-5195	LEG, Aluminum	4
46	P1-17230	P1-17230	P1-17230	CAPSCREW, 3/8 X 1" lg. Hex Hd.	8
47	W1-7524	W1-7524	W1-7524	LOCKWASHER, 3/8", Split	8
48	P1-17248	P1-17248	P1-17248	WASTE DRAIN 2" Brass	1
49	P1-5236	P1-5236	P1-5236	GASKET	1
50	P1-17249	P1-17249	P1-17249	LOCKNUT, Pipe, 2"	1
51	M1-95654	M1-95654	M1-95654	SWITCH GUARD	1
52	P1-95647	P1-95647	P1-95647	CAUTION LABEL	1

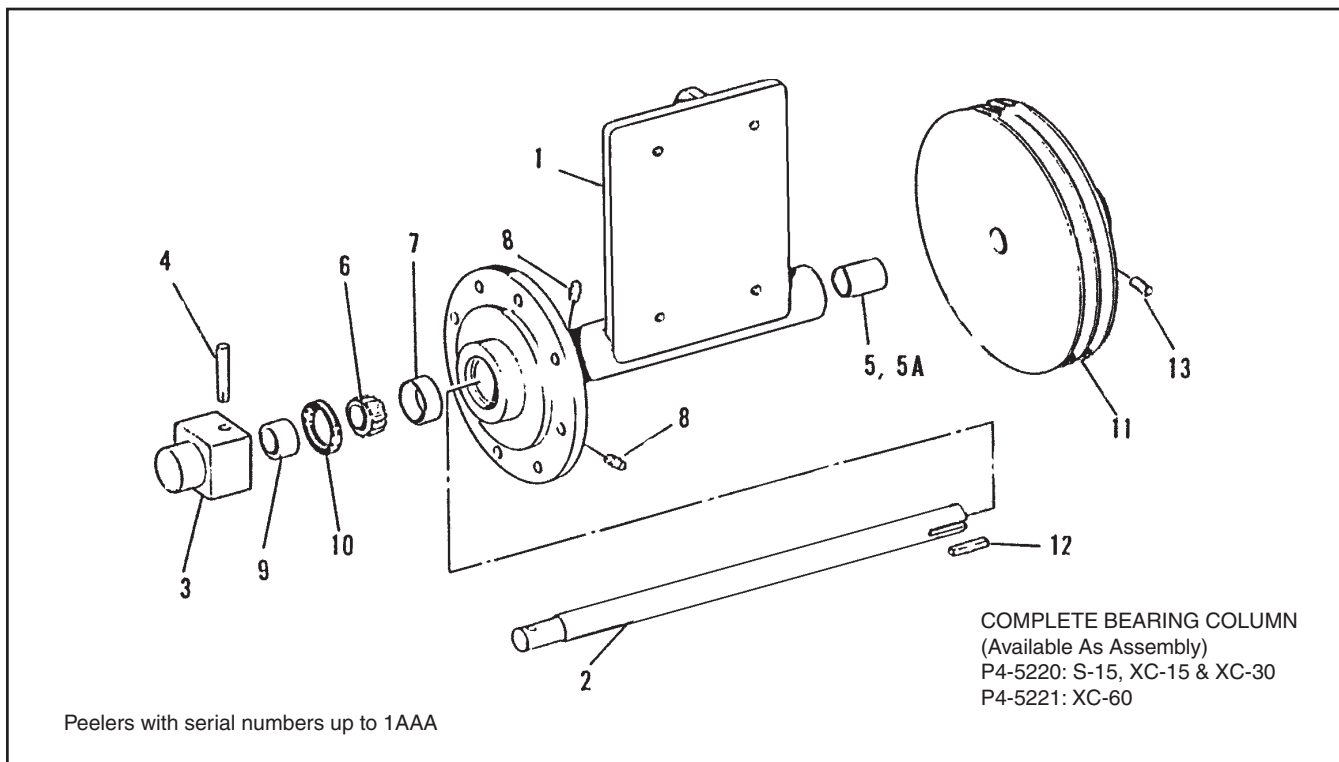
# Illustrated Parts Manual

Models S-15, XC-15, XC-30, XC-60



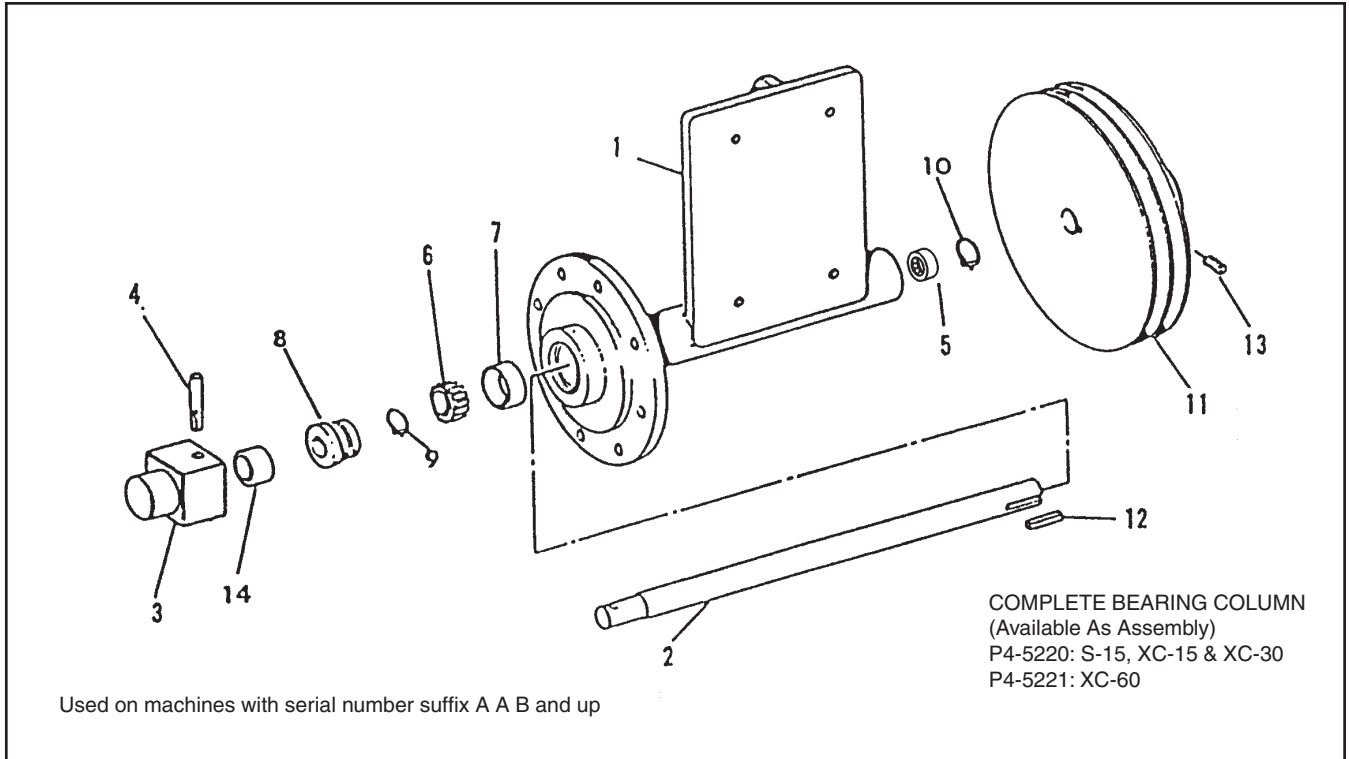
**BLAKESLEE**

**Potato and Vegetable Peelers**



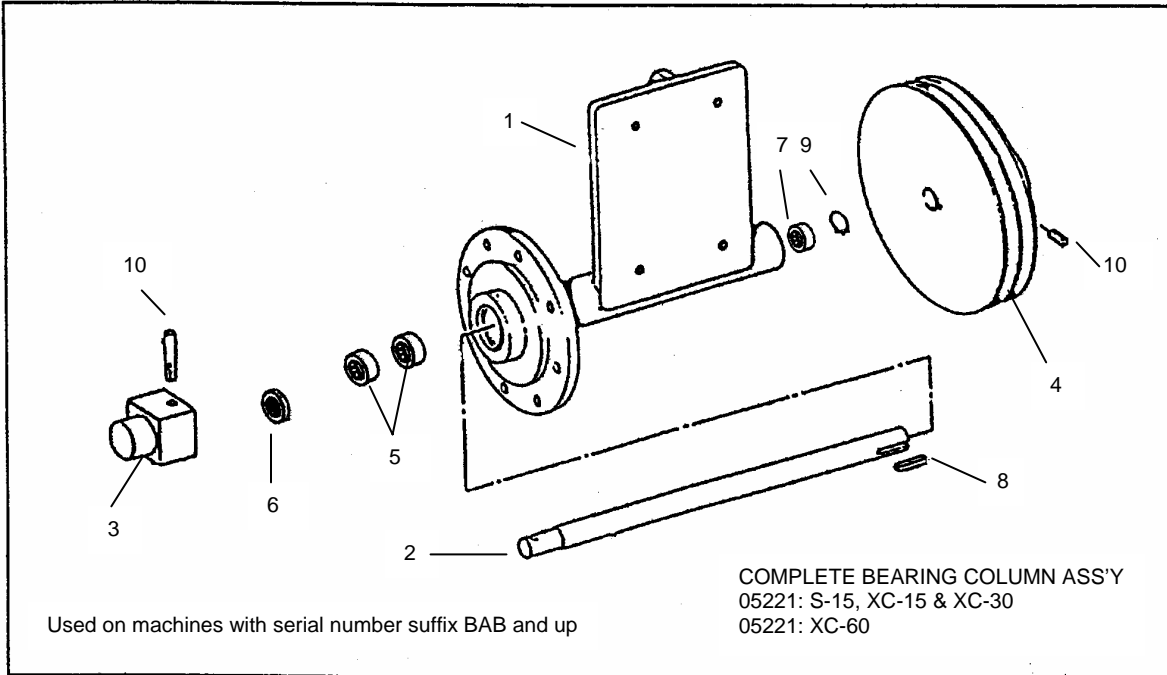
**Figure 3.**

Item No.	Part No.	Description	No. Reqd.
1	P4-5222	BEARING COLUMN (S-15, XC-15 & XC-30)	1
1	P4-5224	BEARING COLUMN (XC-60)	1
2	P2-5225	DRIVE SHAFT, Peel Disc (S-15, XC-15 & XC-30)	1
2	P2-5227	DRIVE SHAFT, Peel Disc (XC-60)	1
3	P1-5177	DRIVING BLOCK	1
4	P1-17232	DRIV-LOK PIN ¼ x 2	1
5	P1-17222	BUSHING, Plain Used up to 6-1-85	1
5A	70170	BALL Bearing, Used after 6/1/85	
6	P1-17225	BEARING Roller Cone	1
7	P1-17224	BEARING, Cup	1
8	P1-17233	PIPE PLUG, 1/8-27 N.P.T.	1
9	P1-5253	SPACER	1
10	P1-5274	OIL SEAL	1
11	P1-17229	PULLEY 2-Groove (S-15, SC-15 & XC-30)	1
11	P3-5135	PULLEY 3-Groove (XC-60)	1
12	P1-17242	KEY, ¼" SQ. x 1-1/2" lg.	1
13	W1-7117	SET SCREW, 5/16 x 3/8" lg. Cup Ft.	1



**Figure 4.**

Item No.	Part No.	Description	No. Req'd.
1	5222	BEARING COLUMN (S-15, XC-15 & XC-30)	1
1	5224	BEARING COLUMN (XC-60)	1
2	73195	DRIVE SHAFT (S-15, XC-15 & XC-30)	1
2	73196	DRIVE SHAFT (XC-60)	1
3	73197	DRIVE BLOCK	1
4	17232	DRIV-LOK PIN	1
5	70170	BALL BEARING	1
6	17225	TIMKEN CONE	1
7	17224	TIMKEN CUP	1
8	2255	SHAFT SEAL ASSY	1
9	3488	RETAINING RING	1
10	73203	RETAINING RING	1
11	17229	PULLEY (S-15, SC-15 & XC-30)	1
11	5135	PULLEY (XC-60)	1
12	17242	KEY	1
13	7117	SET SCREW	1
14	73198	SPACER	1



**Figure 5**

Item No.	Part No.	Description	No. Reqd
1	77591	BEARING COLUMN	1
2	77594	DRIVE SHAFT (S-15, XC-15 & XC-30)	1
2	77593	DRIVE SHAFT (XC-60)	1
3	77592	DRIVE BLOCK	1
4	17229	PULLEY(S-15, XC-15 & XC-30)	1
4	05135	PULLEY (XC-60)	1
5	77595	BALL BEARING	2
6	77596	THRUST WASHER	1
7	70170	BALL BEARING	1
8	17242	.25 SQ. KEY STOCK	1
9	73203	RETAINING RING	1
10	07117	5/16-18 3/8 CUP POINT SET SCREW	1



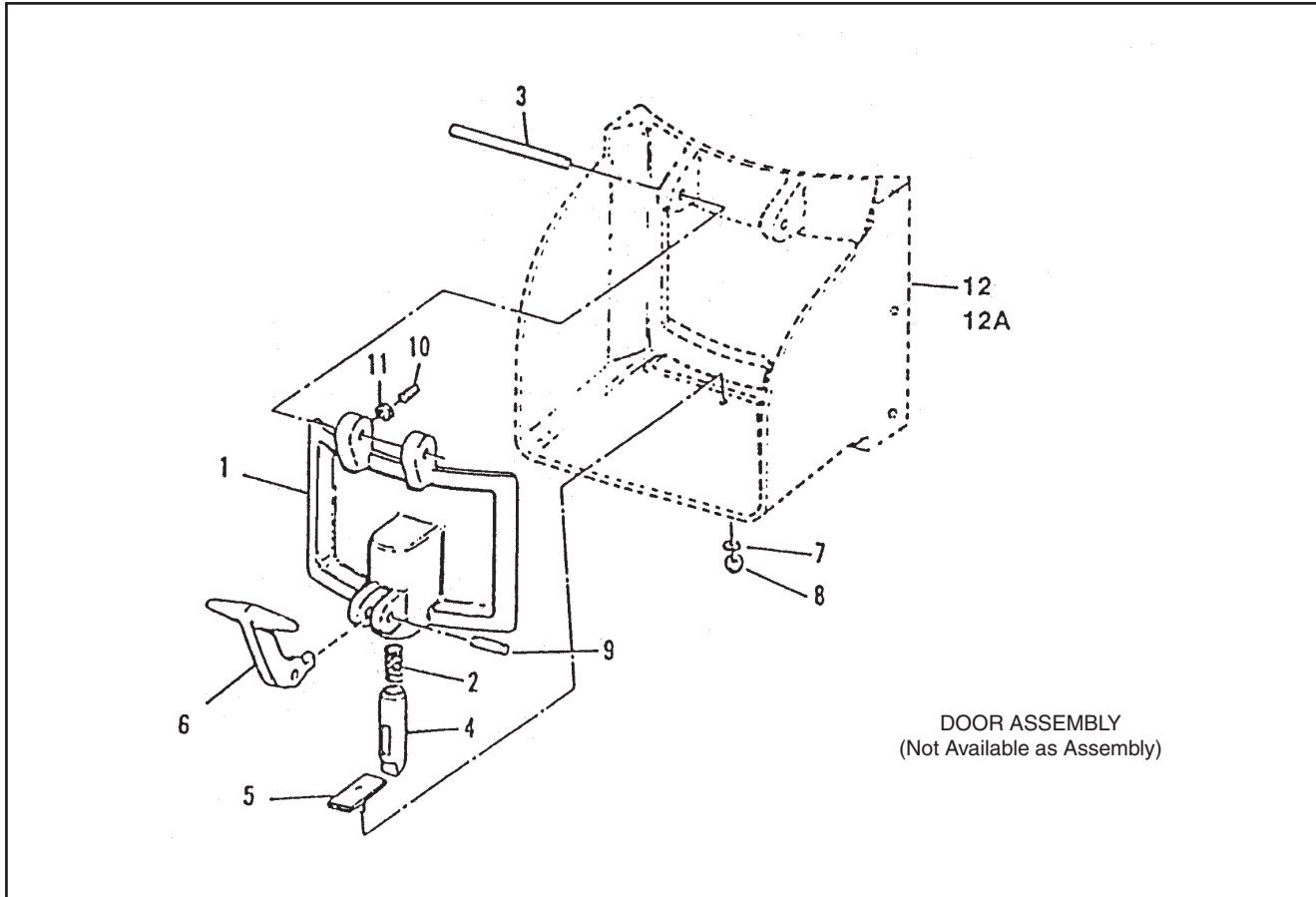
# Illustrated Parts Manual

Models S-15, XC-15, XC-30, XC-60



**BLAKESLEE**

**Potato and Vegetable Peelers**



**Figure 6.**

Item No.	Part No.	Description	No. Req'd.
1	P4-5014	DOOR, Peeler	1
2	P1-5036	SPRING	1
3	P1-5254	PIN, Hinge	1
4	P1-5035	PLUNGER	1
5	P1-5030	LATCH JAM	1
6	P1-5037	HANDLE, Latch	1
7	W-1-7598	LOCKWASHER, 5/15 S/S	1
8	W-1-8138	CAP NUT, Brass, 5/16-18 S/S	1
9	P1-17231	DRIV-LOK PIN, S/S	1
10	P1-5269	BALL PLUNGER	1
11	W1-8132	JAM NUT, 10/32	1
12	P-4-5024	CHUTE CASTING (S-15, XC-15)	1
12A	P-4-5051	CHUTE CASTING (XC-30, XC-60)	1



**Troubleshooting Chart**

TYPE OF TROUBLE	REASON	CORRECTIVE MEASURE
Peeler will not start	Main Fuse or Circuit Breaker	Change fuses or reset circuit breaker
Wire loose or broken	Overload switch tripped	Push reset button. Visually check all connections, controls and motor. Check switch.
Motor runs but peeler disc does not run	Belt broken or slipping	Adjust belt tension or replace broken belts.
Peeler runs hot or smokes	<p>Improper voltage for motor or motor defective. Motor overloading, thus overheating</p> <p>Bearing column tight not free running</p>	<p>Check incoming voltage and motor. Check amperage draw.</p> <p>Grease by removing plugs at lower bearings using Elimate grease gun and Shell Darlina 2 grease or equivalent.</p> <p>Some units may not have plugs. Unit must then be disassembled and the grease manually applied.</p>
Peeler makes noise when running	Worn out bearings	Field replacement of bearings is extremely difficult. It is strongly suggested to replace the entire bearing column assembly when the bearings require replacement. Refer to pages 12 or 13 for part number.
Peeler leaks water at the center bearing	Defective seal	Replace seal (refer to pages 7 and 8 for exact type).
Peeler won't peel potatoes	<p>Worn peeler abrasive disc</p> <p>Peeler overloaded</p>	<p>Replace abrasive disc P4-5270 (XC-15) P4-5109 (XC-30, XC-60)</p> <p>Use proper amount of potatoes for your type of peeler (See Owners Manual).</p>
Flat spots on Idaho potatoes	Potatoes are too long	Cut Idaho potatoes in half before inserting in machine.
Water splashes out when peeling potatoes	<p>Too much water pressure</p> <p>or</p> <p>Splash cover missing</p>	<p>Turn water valve down to regulate.</p> <p>Replace splash cover P/N P2-5100.</p>
Water leaking on floor	<p>Peel trap basket full of peelings</p> <p>Lower drain plugged up</p>	<p>Empty peel trap basket.</p> <p>Clean or rod out drain.</p>

# PARTS & SERVICE

USA

Blakeslee Authorized Parts & service Distributors and Preferred Service Agents are the focal point for service and are responsible for all warranty/repair work and for maintaining a complete stock of replacement parts.

They have factory-trained servicemen and are kept informed by the factory on the latest servicing procedures.

To receive service and/or parts, call the Blakeslee Distributor nearest you. If you happen to be in an area not covered by a distributor, phone the Blakeslee Service Department in Chicago at 708-656-0660 for the name and location of one of over 300 strategically-located Blakeslee Authorized Service Agencies, which is nearest you.

## ALABAMA

Jones McLeod Appliance Co.  
1616 Seventh Ave. North  
Birmingham, AL 35203  
205-251-0159

## ARIZONA

Byassee Equipment  
1939 E. Washington  
Phoenix, AZ 85034  
602-252-0402

## ARKANSAS

Bromley Parts & Service  
10th & Ringo Street  
Little Rock, AR 72202  
501-374-0281

## CALIFORNIA

Acme Pacific Repairs, Inc.  
1347 Fulton Place  
Fremont, CA 94539  
510-252-2070

Barker's Food Machinery Ser.  
5367 Second Street  
Irwindale, CA 91706  
626-960-9390

Chapman Appliance Service  
1784 San Diego Ave.  
San Diego, CA 92126  
619-298-7106

Sterling Service  
644 W. Hawthorn Street  
Glendale, CA  
818-243-1234

## COLORADO

Metro Appliance Service  
1640 S. Broadway  
Denver, CO 80210  
303-778-1126

## CONNECTICUT

A-Tech Service, Inc.  
161 Sanrico Drive  
Manchester, CT 06040  
860-649-6627

## DISTRICT OF COLUMBIA

Electric Motor Repair  
700 East 25<sup>th</sup> Street  
Baltimore, MD 21218  
410-467-8080

## FLORIDA

Commercial Appliance Service  
8416 Laurel Fair Circle  
Tampa, FL 33610  
813-663-0313

Dade Restaurant Repair  
2001 W. 27<sup>th</sup> Street  
Hialeah, FL 33010  
305-887-0783

GCS  
3373 Northwest 168<sup>th</sup> Street  
Miami, FL 33056  
305-623-7001

## FLORIDA (Cont.)

Nass Service Co. Inc.  
1108 S. Woods Ave.  
Orlando, FL 32805  
407-425-2681

## GEORGIA

TWC  
5080 Highlands Pkwy S. A150  
Smyrna, GA 20082  
770-438-9797

## HAWAII

Commercial Appliance  
Parts & Service Co.  
1623 Democratic St.  
Honolulu, HI 96819  
808-841-4545

## IDAHO

Boise Appliance  
1503 Main Street  
Boise, ID 83702  
208-343-0102

## ILLINOIS

Eichenauer Food Equipment  
130 S. Oakland Ave.  
Decatur, IL 62522  
217-429-4229

General Parts Inc  
248 James Street  
Bensenville, IL 60106  
630-595-3300

Rescor  
5344 East Ave.  
Countryside, IL 60525  
708-352-3155

## INDIANA

GCS  
5310 East 25<sup>th</sup> Street  
Indianapolis, IN 46218  
317-545-9655

## IOWA

Goodwin-Tucker  
2900 Delaware Ave  
Des Moines, IA 50137  
515-262-9308

## KANSAS

General Parts, Inc.  
1101 E. 13<sup>th</sup> Street  
Kansas City, MO 64110  
816-421-5400

## KENTUCKY

GCS  
4204 S. Brook Street  
Louisville, KY 40214  
502-367-1788

GCS  
533 A Codell Drive  
Lexington, KY  
859-269-7484

## LOUISIANA

Chandler's Parts & Service  
11656 Darryl Drive  
Baton Rouge, LA 70815  
225-272-6620

## MARYLAND

Electric Motor Repair CO.  
700 East 25<sup>th</sup> Street  
Baltimore, MD 21218  
410-467-8080

## MASSACHUSETTS

Ace Service Co. Inc.  
95 Hampton Ave.  
Needham (Boston), MA 02194  
617-449-4220

## MICHIGAN

E & G Appliance Service Co.  
1435 Lawndale Ave.  
Detroit, MI 48209  
313-842-2252

Midwest Food Equipment Serv.  
3055 Dixie  
Grandville, MI 49418  
616-261-2000

## MINNESOTA

GCS  
2857 Louisiana Ave. North  
Minneapolis, MN 55427  
763-546-4221

## MISSISSIPPI

Camp Service & Parts Inc.  
328 B Oakdale Street  
Jackson MS 39201  
601-353-9700

## MISSOURI

Kaemmerlen Parts & Service  
2728 Locust Street  
St. Louis, MO 63105  
314-535-2222

## NEBRASKA

Goodwin-Tucker Group  
7535 D Street  
Omaha, NE 68124  
402-397-2880

## NEVADA

Burney's Commercial Service  
4480 Aldebaran Ave.  
Las Vegas, NV 89103  
702-736-0006

## NEW MEXICO

R & B Service  
4412 Towner N.E.  
Albuquerque, NM 87110  
505-889-4090

## NEW YORK

Acme American Repairs Inc.  
99 Scott Ave.  
Brooklyn, NY 112237  
718-456-6544

Duffys Rest. Equip. Service  
3138 Oneida Street  
Sauquoit (Utica), NY 13456  
315/737-9401

## NORTH CAROLINA

Authorized Appliance Service  
1020 Tuckaseegee Road  
Charlotte, NC 28208  
704/377-4501

## OHIO

Akron Restaurant Equipment  
1169 W. Waterloo Road  
Akron, OH 44314  
330/753-6635

Commercial Parts & Service  
6940 Plainfield Road  
Cincinnati, OH 45236  
513-984-1900

Electrical Appliance Repair  
5805 Valley Belt Road  
Cleveland, OH 44131  
216-459-8700

## OKLAHOMA

Krueger Electric Service Inc.  
100 N.E. 24<sup>th</sup> Street  
Oklahoma City, OK 73105  
405-528-8883

## OREGON

Ron's Service Inc.  
16364 S.W. 72<sup>nd</sup> Ave.  
Portland, OR 97224  
503-624-0890

## PENNSYLVANIA

American Kitchen Mach. Corp.  
204 Quarry Street  
Philadelphia, PA 19106  
215-627-7760

GCS  
210 Vista Park Dr.  
Pittsburgh, PA 15205  
412-787-1970

K & D Parts  
1833-41 N. Cameron Street  
Harrisburg, PA 17103  
717-236-9039

## SOUTH CAROLINA

Whaley Foodservice Repairs  
137 Cedar Road  
Lexington, SC 29171  
803-996-9920  
800-877-2662

## TENNESSEE

A-Tech Inc  
424 Sixth Avenue South  
Nashville, TN 37203  
615-255-2002

FESCO  
1209 S. Watkins  
Chattanooga, TN 37404  
423-624-3381

GCS  
3717 Cherry Road  
Memphis, TN 38118  
901-366-4587

## TEXAS

Commercial Kitchen Repair  
1377 N. Bravos  
San Antonio, TX 78207  
210-735-2811

Kenco Service  
26 Lyerly - Suite 1  
Houston, TX 77022  
713-691-2935

Stove Parts Supply Co.  
2120 Solana  
Fort Worth, TX 76117  
817-831-0381

## UTAH

LaMonicas Restaurant  
Equipment Service  
6182 South Stratler  
Murray, UT 84107  
801-263-3221

## VERMONT

Authorized Appliance  
74<sup>th</sup> River Street  
Rutland, VT 05701  
802-775-5588

## VIRGINIA

Daubers Inc.  
7645 Dynatech Court  
Springfield, VA 22153  
703-866-3600

## WASHINGTON

Walsh Equipment Repair  
1519 128<sup>th</sup> Place N.E.  
Bellevue, WA 98005  
425-462-1645

## WEST VIRGINIA

Authorized Factory Service  
Edens Fork Exit I 77  
Charleston, WV 53186  
304-344-8225

## WISCONSIN

General Parts Inc.  
W223 N. 735 Saratoga Dr.  
Waukesha, WI 53186  
262-650-6666

## ALBERTA

Great West Comm. Kit. Rep.  
5664 Burleigh Cresc. S.E.  
Calgary, AB T2H 1Z8  
Tel: 403-276-7832

L.D.I. Technical Services  
4 – 3600 21<sup>st</sup> St. N.E.  
Calgary, AB T2E 6V6  
Tel: 403-299-9591

North Star Repair  
11518 119<sup>th</sup> Street  
Edmonton, AB T5G 2X7  
Tel: 780-453-6213

Robertshaw Refrigeration  
P.O. Box 840  
Cold Lake, AB T9M 1P2  
Tel: 780-349-3488

Re-Nu Mechanical Ltd.  
1710 Bay F – 31<sup>st</sup> St. N.  
Lethbridge, AB T1H 5H1  
Tel: 403-327-7368

Medicine Hat Refrigeration  
666 17<sup>th</sup> Street S.W.  
Medicine Hat, AB T1A 4X7

Satellite Mechanical Ltd.  
#1 – 5571 45<sup>th</sup> Street  
Red Deer, AB T4N 1L2  
Tel: 403-343-6122

## BRITISH COLUMBIA

Key Food Equip. Services  
180 – 3700 North Fraser  
Burnaby, BC V5J 5H4  
Tel: 604-433-4484

Marsh & Sons Ventures  
10411 – 95<sup>th</sup> Avenue  
Fort St. John, BC V1J 5Z4  
Tel: 250-787-9733

J.D. Appliance Repairs  
1965 Moss Crt.  
Kelowna, BC V1Y 9L3  
Tel: 250-860-5057

Jemco Food Equip. Service  
7431 Industrial Road  
Lantzville, BC V0R 2H0  
Tel: 250-390-3244

Sheridan Appliances  
764 Chaparral Place  
Kamloops, BC V2C 5W4  
Tel: 250-314-1722

Mark's Rest. Services  
515 Dupplin Road, #3  
Victoria, BC V8Z 1C2  
Tel: 250-475-6275

Key Food Services  
2740 Bridge St., #105  
Victoria, BC V8T 5C5  
Tel: 250-920-4888

Triumph Food Equip. Service  
4671 Slocan Street  
Vancouver, BC V5R 1Z8  
Tel: 604-454-9326

## MANITOBA

Grand Valley Mechanical  
360 Park Avenue E.,  
Brandon, MB R7A 6N2  
Tel: 204-728-3898

Commercial Kitchen Equip.  
731 Wall Street  
Winnipeg, MB R3G 2T6  
Tel: 204-586-8273

Res Tech Service Ltd.  
593 Sherburne Street  
Winnipeg, MB R3G 2K8  
Tel: 204-228-5399

## NEW BRUNSWICK

D & L Electric  
83 Sister Green Road  
Campbellton, NB E3N 3Y5  
Tel: 506-753-5076

Electrical & Refrigeration Serv.  
88 Beaverbrook Street  
Moncton, NB E1C 8H7  
Tel: 506-857-2232

EMR  
122 Driscoll Avenue  
Moncton, NB E1E 3R8  
Tel: 506-855-4228

I Line Electric Ltd.  
280 Dalton Avenue  
Miramichi, NB E1V 3N9  
Tel: 506-622-2214

Fundy Gas & Electric  
45 Glen Road  
Saint John, NB E2H 2C9

## NEWFOUNDLAND

Bob's Electric  
14 Cooks Avenue  
Cornerbrook, NF A2H 1P1  
Tel: 709-634-7588

Domestic Service Centre  
27 McCurdy Drive, P.O. Box 83  
Gander, NF A1V 1W5  
Tel: 709-256-7738

Harold Snow & Son Ltd.  
451 Kenmount Road  
St-John's, NF A1B 3P9  
Tel: 709-754-0330

## NOVA SCOTIA

Jerome Cameron  
R.R. #5, Salt Springs  
Antigonish, NS B2G 2L3  
Tel: 902-863-4528

Harry Rhyno Refrigeration  
233 North Street  
Bridgewater, Lun. Co. NS  
B4A 2V7  
Tel: 902-543-4737

Walker's Electric  
2608 Windsor Street  
Halifax, NS B3K 5C8  
Tel: 902-454-0291

## NOVA SCOTIA Continued

Buddens Appliance Service  
164 Nichols Avenue  
Kentville, NS B4N 2H6  
Tel: 902-678-7895

J.R. Mahoney Ltd.  
1810 Kings Road  
Sydney, NS B1L 1C5  
Tel: 902-564-8775

Syd Tech Appliances  
Box 1907  
Sydney, NS B1P 6W4  
Tel: 902-561-0156

Fundy Appliance Service  
Truro, NS B2N 5B3  
Tel: 902-897-0479

## ONTARIO

OFS Restaurant Appl. Serv.  
16 Lennox Dr., R.R. #2  
Barrie, ON L4M 4S4  
Tel: 705-728-5289

ChemMark  
52 Highway 17, P.O. Box 371  
Chalk River, ON K0J 1J0  
Tel: 613-584-2988

Kitchenworks Rest. Equip. Sup  
R.R. #5, 823974 Massie Rd.  
Chatsworth, ON N0H 1G0  
Tel: 519-794-3633

G.R. Garrity  
39 Regal Road  
Guelph, ON N1K 1B6  
Tel: 519-836-1090

Barbers Rest. Eq. & Repairs  
927 Barton Street E.  
Hamilton, ON L8L 3C4  
Tel: 905-527-2525

J.I.K.S. Ind. Kitchen Serv.  
42 Groff Place, #4  
Kitchener, ON N2E 2L6  
Tel: 519-748-5361

R.G. Henderson & Son Ltd.  
660A Justus Drive  
Kingston, ON K7M 4H4  
Tel: 613-384-1718

A-1 Plumbing & Heating  
P.O. Box 414  
Ilderton, ON N0M 2A0  
Tel: 519-455-6559

Action Rest. & Serv. Equip.  
151 Bentley Street, #9  
Markham, ON L3R 3L1  
Tel: 905-475-1499

Stell Mechanical  
25 Iron Street  
Etobicoke, ON M9W 5E3  
Tel: 905-569-8270

Repco Restaurant Equip.  
9208 Lundy's Lane  
Niagara Falls, ON L2E 6S4  
Tel: 905-358-9071

## ONTARIO Continued

Blanchfield Comm. Kit. Serv.  
770 Industrial Ave., Unit 13  
Ottawa, ON K1G 4H3  
Tel: 613-737-6632

McNabb Appliances  
370 Burnham Street  
Peterborough, ON K9H 1T6  
Tel: 705-743-5350

Erlmar Plumbing Ltd.  
795 Batory Avenue  
Pickering, ON L1W 2W5  
Tel: 905-420-5252

Sure-Fix Food Equip. Serv.  
52 Vine Street S.  
St. Catharines' ON L2R 3X8  
Tel: 905-685-0480

W.J. Barnes & Son  
116 Talford Street  
Sarnia, ON N7T 7J2  
Tel: 519-332-1770

Sault Rapid Repair  
1496 Wellington St. E.  
Sault Ste. Marie, ON P6A 2R1  
Tel: 705-759-3311

Tisdale Plumbing & Heating  
40 Golden Avenue  
South Porcupine, ON P0N 1H0  
Tel: 705-235-4045

Sudbury Rapid Service  
23 Main Street  
Chelmsford, ON P0M 1L0  
Tel: 705-671-6477

Jemm Service  
1211 Ford Street  
Thunder Bay, ON P3A 4R8  
Tel: 807-623-7851

R.G. Henderson & Son Ltd.  
100 Thorncliff Park Dr.  
Toronto, ON M4H 1G9  
Tel: 416-423-4357

## P.E.I.

Waites Enterprises  
626 South Drive  
Summerside, PEI C1N 3Z7  
Tel: 902-436-7509

## QUEBEC

Choquette CKS  
8487 19<sup>th</sup> Avenue  
Montreal, QC H1Z 4J2  
Tel: 514-723-5000

L. Chasse Inc.  
448 Richelieu  
Pointe au Pic, QC G5M 1C9  
Tel: 418-723-9100

Majella Vaillancourt  
82 St. Cyrille  
Riviere de Loup, QC G5R 2G8  
Tel: 418-862-2503

## QUEBEC

Electro Ref. Service Ent.  
161 Pere Divet  
Sept-Iles, QC G4R 3P8  
Tel: 418-962-9186

Kitchen Equipment Services  
893 King Street W.  
Sherbrooke, QC J1H 1R9  
Tel: 819-821-2153

Choquette CKS  
900 Pierre Bertrand, #220  
Ville Vanier, QC G1M 3K2  
Tel: 418-681-3944

## SASKATCHEWAN

Comfort Mechanical  
1355 11<sup>th</sup> Avenue  
Regina, SK S4P 0G8  
Tel: 306-352-0544

Northcote Sales & Serv. Co.  
1327 Hamilton Street  
Regina, SK S4R 2B6  
Tel: 306-525-1979

Evan's Restaurant Serv.  
410 Lauriston Street  
Saskatoon, SK S7K 0R5  
Tel: 306-653-2772

## YUKON

Oscar's Electric  
310 Alexander St.  
Whitehorse, YK Y1A 2L6  
Tel: 867-667-2330

Yukon Appliance Sales & Serv.  
9041 Quartz Road  
White Horse, YK Y1A 4Z5  
Tel: 867-668-4844

## Notes



Date of Installation \_\_\_\_\_

Serial No. \_\_\_\_\_ Model No. \_\_\_\_\_

## **Limited Warranty**

Your new Blakeslee peeler is warranted for one year from date of installation shown above against defective materials and workmanship. If any defects are found within the warranty period; parts, and labor involved with their replacement will be covered free of charge. Service must be performed by a Blakeslee authorized service agency. All labor to be performed during regular working hours. Overtime premium will be charged to the customer. All warranty parts are shipped by surface transportation. If other means of transportation is requested the customer is required to pay the premium. This warranty does not apply to damages resulting from errors in installation on the part of other contractors, nor does it apply to machines which have been subject to accident, misuse, or abuse. It is understood that Blakeslee's warranty obligation with respect to machines located outside of the United States or located in the state of Alaska is limited to the furnishing of replacement parts only. In the state of Hawaii, repair labor is provided free of charge; travel time and expenses paid by the customer. On the island of Oahu, repair labor, travel time and expenses are provided free of charge. This is the entire and only warranty of Blakeslee. We neither assume nor authorize anyone else to assume for us any other obligation or liability in connection with Blakeslee Machines.

- In no case can this warranty exceed eighteen (18) months from the date of shipment from our plant at Chicago, Illinois