

1/2, 1, AND 1 1/2 GALLON SATELLITE BREWER
BLOOMFIELD MODEL #9107A & 9107AW

BY

BLOOMFIELD

BLOOMFIELD INDUSTRIES
2 ERIK CIRCLE
P.O.BOX 280
VERDI, NV 89439
U.S.A.
FAX (800) 356-5142
PH (702) 345-0444

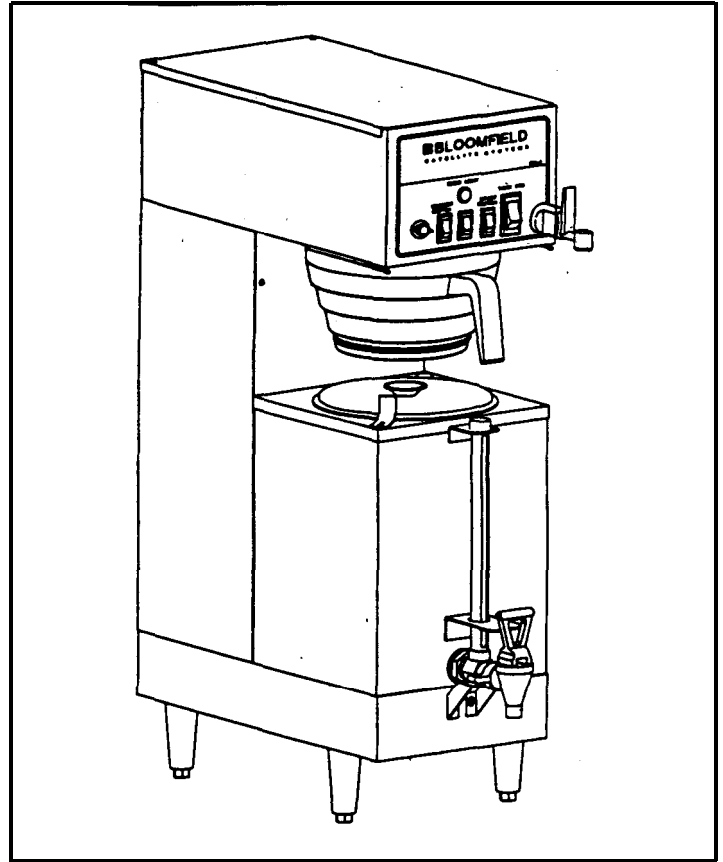


TABLE OF CONTENTS

PRE INSTALLATION INSTRUCTION	PAGE 2
PLUMBER'S INSTALLATION INSTRUCTIONS	PAGE 2
ELECTRICIAN'S INSTALLATION INSTRUCTIONS	PAGE 3
INITIAL OPERATING INSTRUCTIONS	PAGE 3
BREWING INSTRUCTIONS	PAGE 4
TIMER ADJUSTMENT INSTRUCTIONS	PAGE 4
BY-PASS ADJUSTMENT INSTRUCTIONS	PAGE 5
EXPLODED VIEW	PAGE 8
PARTS LIST	PAGE 7
WIRING DIAGRAM 9107A	PAGE 8
WIRING DIAGRAM 9107AW	PAGE 9

Printed in April, 1996

INSTALLATION INSTRUCTION

READ THIS COMPLETELY BEFORE STARTING THE INSTALLATION

WARNING: DO NOT plug In or energize this unit until installation instructions are read and followed.

To enable the installer to make a quality installation and hold delay time to a minimum, the following suggestions and tests should be done before the actual unit installation is begun.

LEVELING THE UNIT

Set Coffee Brewer In operating location and level. For proper unit operation, It is very important that the unit be level when it is standing in its proper operation position. A spirit level should be placed on the top plate of the unit, at the edge, as a guide when making level adjustments. Level the unit from left to right and front to back by turning the adjustable feet that support the unit.

PLUMBER'S INSTALLATION INSTRUCTION

NOTE: This equipment must be installed to comply with the Basic Plumbing Code of the Building Officials and Code Administrators international, inc (BOCA) and the Food Service Sanitation Manual of the Food and Drug Administration. (FDA)

Flush water line before connecting to Brewer. Brewer should be connected to COLD WATER line

NOTE: Bloomfield recommends 1/4' copper tubing for installation of less than 25 feet and 3/8' for more than 25 feet from the 112' water supply line.

A water shut-off valve should be installed on the Incoming water line in a convenient location.

Unit must be installed on a water line with a flowing pressure between 20 PSI and 90 PSI. If water pressure does not fall into this range or varies greatly, a pressure regulator should be installed in the water supply line.

To delay build-up of lime deposits in water tank, we recommend the use of a Water Strainer.

ELECTRICIAN'S INSTALLATION INSTRUCTIONS

WARNING Brewer must be properly grounded to prevent possible shock hazard.
DO NOT assume a plumbing line will provide such a ground.

Unit requires a dedicated power source capable of supplying: 115/208 Volt, AC., 50/60 Hertz, (4) wire, 20 Amp Service.

The unit is shipped from the factory with a power cord and cap

NOTE: Make sure tank heater switch on front panel is in OFF position. Bottom portion of switch rocker should be pressed in. -Failure to turn off the element' will damage the element and void warranty.

INITIAL OPERATING INSTRUCTIONS

NOTE: Operations should be performed by a qualified Installer.

Electrician's and Plumber's instructions should be followed carefully before proceeding with Initial Operating instructions.

Be sure all electrical and plumbing connections are tight.

Make sure Tank Heater Switch on Front Panel is still in OFF position.

Place empty Satellite under the Brewer.

Press Brew Start Switch to initiate brewing cycle. This will energize the solenoid and will begin filling the tank. (Approximately 3 Cycles for initial fill only).

Press Brew Stop Switch when water begins to flow from spray disc.

Turn Tank Heater Switch to ON position.

Allow 30 minutes for initial water heat up. Time will vary with incoming water temperature.

When tank water is up to proper temperature, the green READY TO BREW light will be ill.

NOTE: During the initial heat-up, some water may drip from spray disc. This is normal.

Brewer is ready for use.

BREWING INSTRUCTIONS

Place filter paper in Brew Chamber and add Coffee. Slide Brew basket into rails, pushing it to full back stop location. Make sure paper is properly located for bypass to flow behind the filter.

Press Brew Switch to initiate brewing cycle.

Make sure drip-out is complete before removing Brew Chamber.

if for any reason there is a need to stop the brewing cycle before its completion, press the "Brew Stop" switch. This stops water flow to the Brew Chamber. The timing cycle is also canceled and timer resets to start.

Check Volume. To change the volume quantity, see 'Timer Adjustment Instructions' below.

NOTE: Inlet water is controlled by .35 GPM flow control in solenoid.

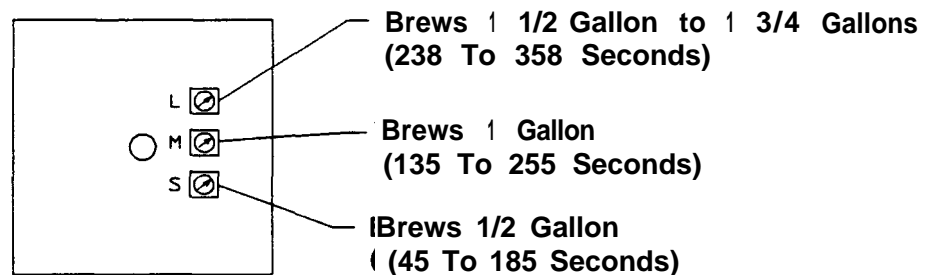
TIMER ADJUSTMENT INSTRUCTIONS

NOTE: Operations should be performed by a qualified installer.'

This Brewer was Pre-Adjusted at 1/2, 1, or 1 1/2 Gallons of Coffee. Following to be done if it is necessary to fine tune the timer to match brewed quantity.

All operating controls are accessible to Top Cover only.

1. Unplug power at source.
2. Remove the Top Cover by removing two (2) #8 Screws.
3. Adjust the setting on the timer on the left side of the unit.
4. Replace Top Cover



BY-PASS ADJUSTMENT

The by-pass in the unit is factory pre-adjusted for proper extraction & volume. However, If the by-pass valve must be readjusted due to:

Coffee bed from rising above the filter paper and flooding into the finished brew .

Necessary re-adjustment to aid in setting the level of finished brew strength for local coffee drinking quality.

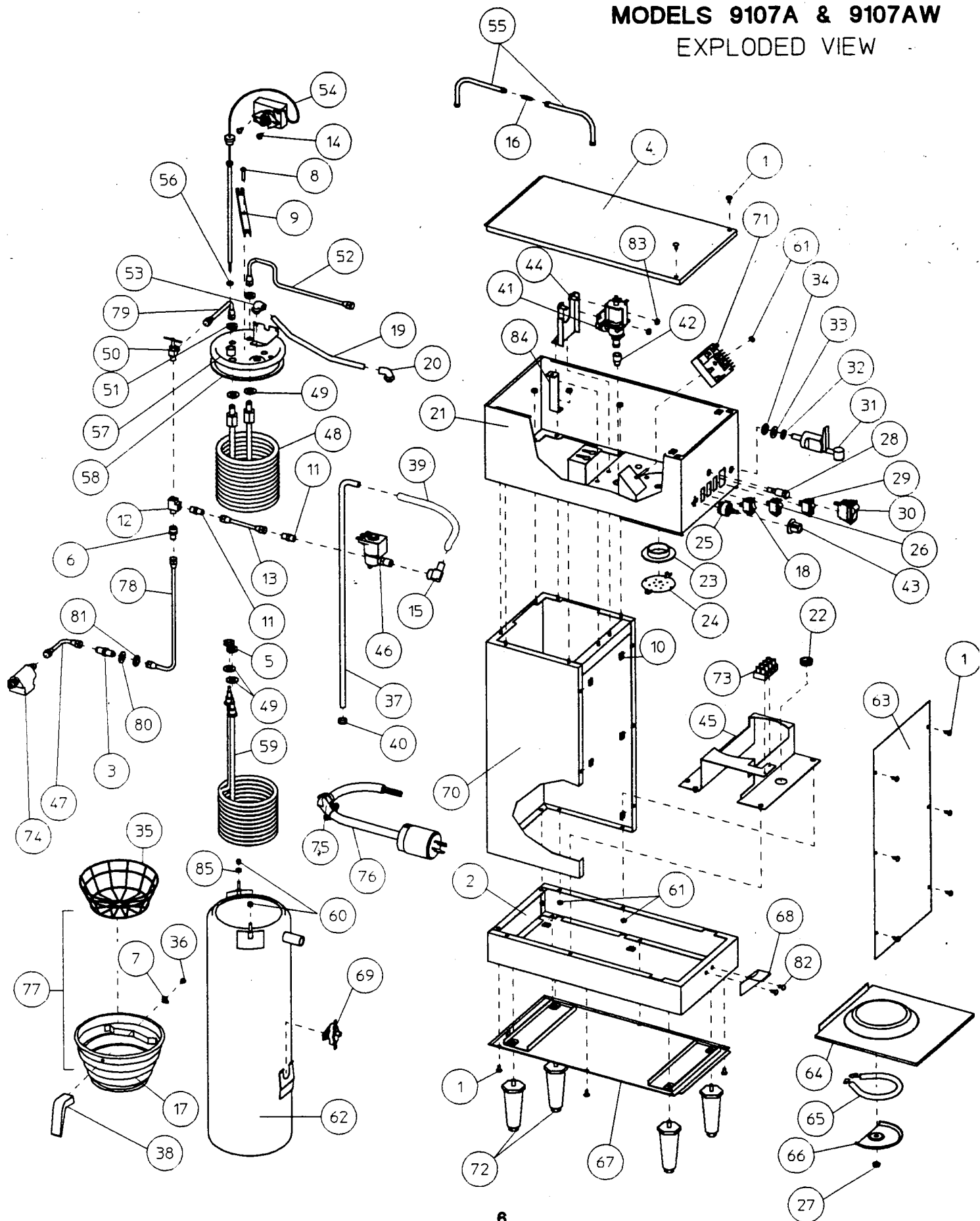
Follow the instructions below:

WARNING: Turn off the Tank Heater Switch and disconnect power supply to Brewer before removal of any panel or replacement of any component.

1. Remove the two (2) screws holding the Top Cover. Slide Cover back and up to remove.
2. Locate the By-Pass Valve in the front of the tank.
3. Turn screw on top of the By-Pass Valve clockwise to open and counter-clockwise to close.
4. Replace Top Cover

NOTE: Timer may have to be readjusted for correct dispenser amount.

MODELS 9107A & 9107AW EXPLODED VIEW



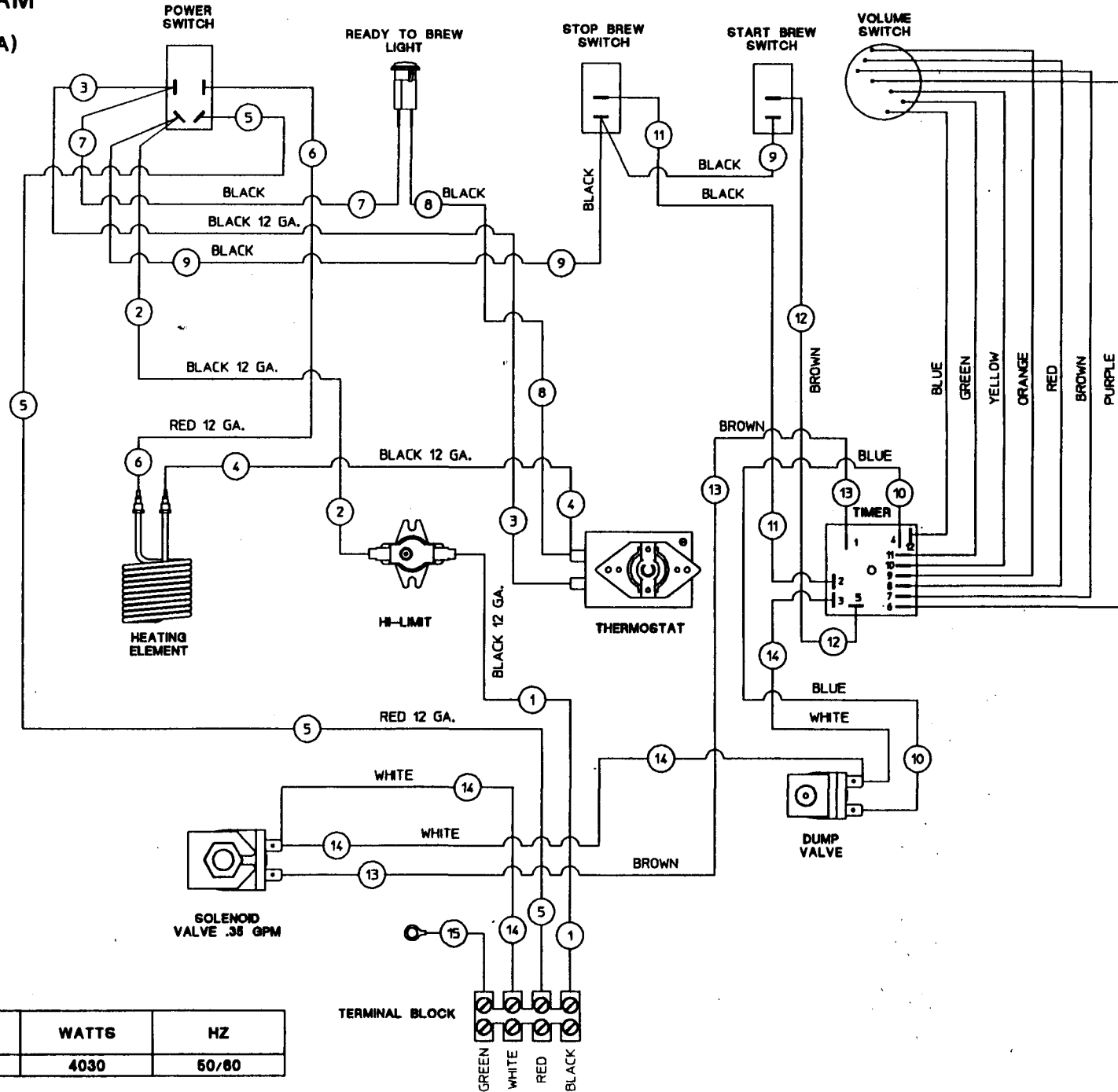
**PARTS IDENTIFICATION (MODEL
NOS. 9107A & 9107AW)**

ITEM	SERVICE #	DESCRIPTION	QTY.
1	8543-52	SCREW PHL SS 8 X 3/8	14
2	82502	BASE WELDED ASSY	1
3	8812-57	FTG STRAIGHT UNION	1
4	82491	COVER BASIN	1
5	8043-28	NUT HEX BR HTG ELEM	2
6	8551-30	FTG-STAIIGHT FEMALE TO MALE	1
7	8812-73	CLIP WIRE RACK	1
8	8043-47	SCREW HOLD DOWN STRAP	1
9	8043-5	HOLD DOWN STRAP	1
10	8543-23	NUT TINNERMAN 8-32	14
11	8706-160	FTG STRAIGHT MALE MALE	2
12	8812-55	FTG ELBOW	1
13	8752-5	TUBE COPPER STRAIGHT	1
14	3-100	SCREW THERMOSTAT	2
15	9102-8	FTG ELBOW TUBING	1
16	82241	CONNECTOR VENT TUBE	1
17	82387	CHAMBER BREW	1
18	8707-34	SWITCH WMR LGT (9107AW ONLY)	1
19	82400	TUBE TANK TO SPRAY HEAD	1
20	8043-11	ELBOW OUTLET	1
21	82504	BASIN WELDED ASSY	1
22	8543-69	BUSHING HEYCO	1
23	82215	GASKET SPRAY HEAD	1
24	8543-44	DISC SPRAYER STD	1
25	82392	SWITCH ROTARY W/HARNESS	1
26	8707-55	SWITCH ROCKER BREW	1
27	51253	NUT HEX 1/4-20 (9107AW ONLY)	1
28	8718-31	LIGHT PILOT GREEN	1
29	8812-40	SWITCH NORM ON/OFF	1
30	82395	SWITCH LTD TANK HTR	1
31	8551-250	FAUCET ASSY	1
32	8551-100A	WASHER FAUCET	1
33	8551-100B	WASHER TOOTH FAUCET	1
34	8551-100C	NUT FAUCET	1
35	8706-9	RACK WIRE CHAMBER	1
36	8707-3	SCREW BREW CHAMBER	1
37	82388	FILL TUBE ASSY	1
38	8707-2	HANDLE BREW CHAMBER	1
39	82501	TUBE SI LI CONE 312 ID	1
40	82390	GROMMET FILL TUBE	1
41	82394	VALVE BYPASS ADJ	1
42	82396	GROMMET BYPASS	1
43	82397	KNOB	1
44	82498	BRACKET BYPASS VALVE	1
45	82506	BRACKET TANK SUPPORT	1
46	82391	VALVE SOLENOID 35 GPM	1
47	8540-4	TUBE COPPER 90* BEND	1
46	8540-6	COIL HOT-WATER	1
49	8043-30	GASKET ELEMENT HTG	4
50	8514-26	VALVE NEEDLE	1
51	8941-21	NUT BRASS WATER COIL	2
52	9102-37	TUBE COPPER TO FAUCET	1
53	8043-11	ELBOW OUTLET	1
54	8512-51	THERMOSTAT	1
55	8706-20	TUBE VENT LONG	2
56	8512-41	WASHER THERMO SEAL	1

ITEM	SERVICE #	DESCRIPTION	QTY.
57	82495	TANK COVER ASSY	1
58	8043-12	GASKET TANK COVER	1
59	82398	ELEM HTG 4000W	1
60	8043-506	NUT ACORN	2
61	8942-92	NUT KEP 8-32	17
62	82402	TANK WELDED ASSY	1
63	82409	PANEL FRONT	1
64	9102-20	BASE COVER ASSY	1
65	8572-18	WARMER 100W (9107AW ONLY)	1
66	8703-26	RETAINER WARMER (9107AW ONLY)	1
67	82297	BOTTOM PLATE ASSY	1
68	9102-49	BRACKET FAUCET	1
69	8552-50	THERMOSTAT HI-LIMIT	1
70	82505	BODY WELDED ASSY	1
71	82401	TIMER ADJ	1
72	8516-1500	LEG BLACK	4
73	8552-18	TERMINAL BLOCK	1
74	SA 9052	STRAINER	1
75	54137	FTG FLEX CONDUIT	1
76	8718-5	CORD ASSY	1
77	82516	BREW CHAMBER ASSY	1
78	82514	TUBE COPPER INLET	1
79	9102-58	TUBE COPPER TANK INLET	1
80	8551-53	WASHER SS UNION	1
81	8710-10	NUT HEX UNION	1
82	D 0002-3	SCREW II10-32 FAUCET BRK	2
83	18-126	NUT 1/4-20	2
84	82589	BRACKET. TANK SUPPORT	1
85	55455	NUT HEX II8-32	1

WIRING DIAGRAM

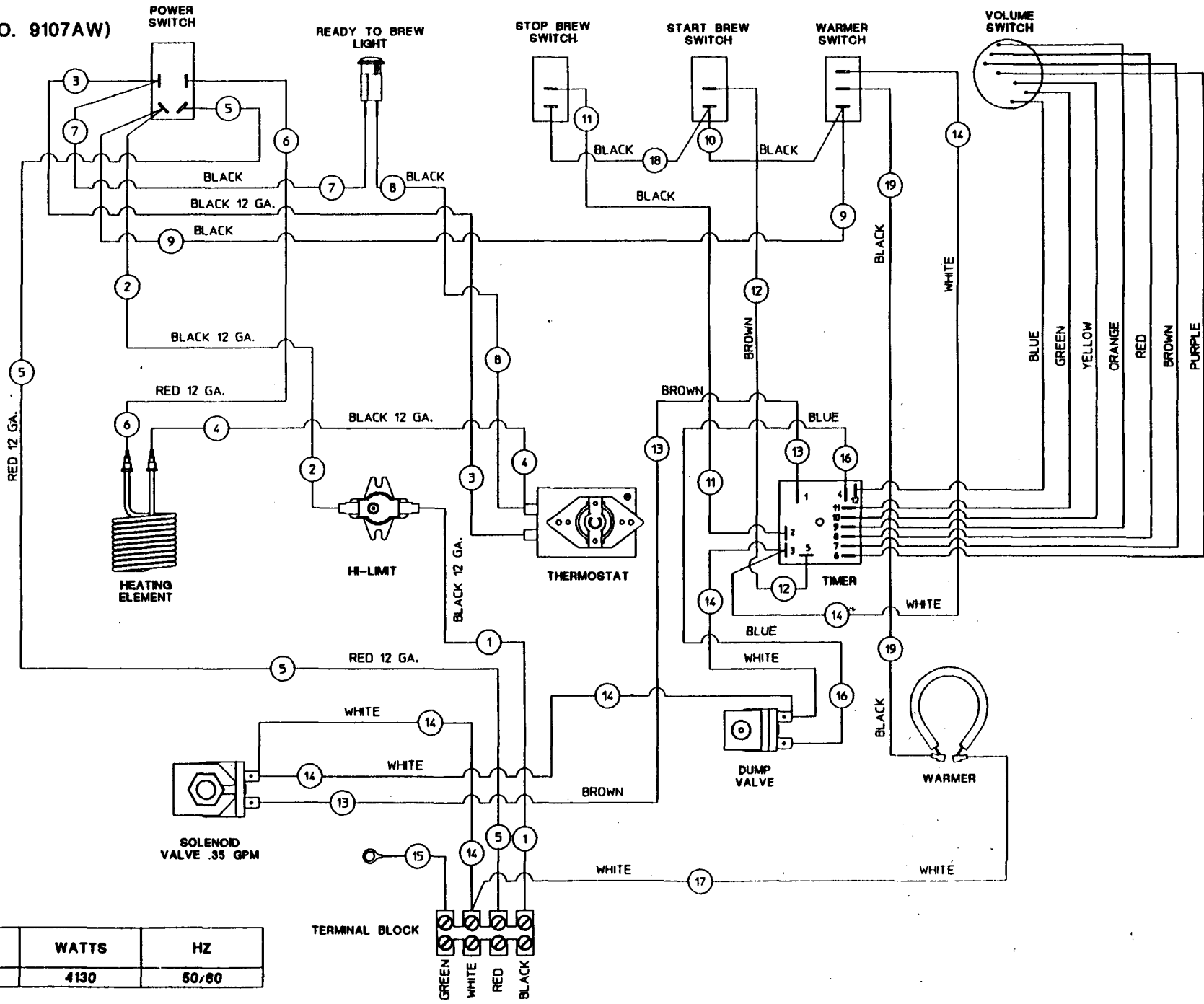
(MODEL NO. 9107A)



VOLTS	WATTS	HZ
115/208	4030	60/80

WIRING DIAGRAM

(MODEL NO. 9107AW)



VOLTS	WATTS	HZ
115/208	4130	50/60