

BLOOMFIELD 3-5 GALLON TEA BREWER

MODEL NO. 8357



MANUFACTURED
EXCLUSIVELY FOR

REILY FOODS COMPANY

BY

BLOOMFIELD

BLOOMFIELD INDUSTRIES
2 ERIK CIRCLE
P.O.BOX 280
VERDI, NV 89439
U.S.A.

FAX (800) 356-5142
PH (702) 345-0444

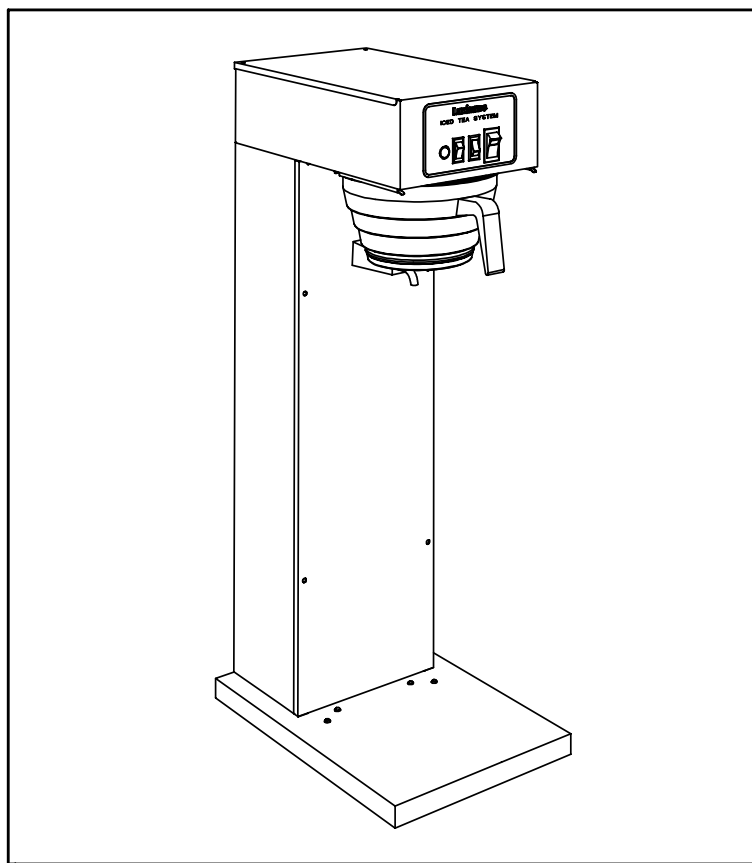


TABLE OF CONTENTS

INTRODUCTION	PAGE 1
INSTALLATION INSTRUCTION	PAGE 2
INITIAL OPERATING INSTRUCTION	PAGE 3
BREWING INSTRUCTION	PAGE 4
WIRING DIAGRAM	PAGE 5
PARTS IDENTIFICATION	PAGE 6
EXPLODED VIEW	PAGE 7
SERVICE INFORMATION FOR SOLENOIDS	PAGE 8
ORDERING PROCEDURE	PAGE 9
WARRANTY	PAGE 10

This machine will brew 3 & 5 Gallons of Loose or Filter Pouch TEA and is factory pre-set at 3 Gallons.

Printed in December 1996

INTRODUCTION

BLOOMFIELD MODEL 8357

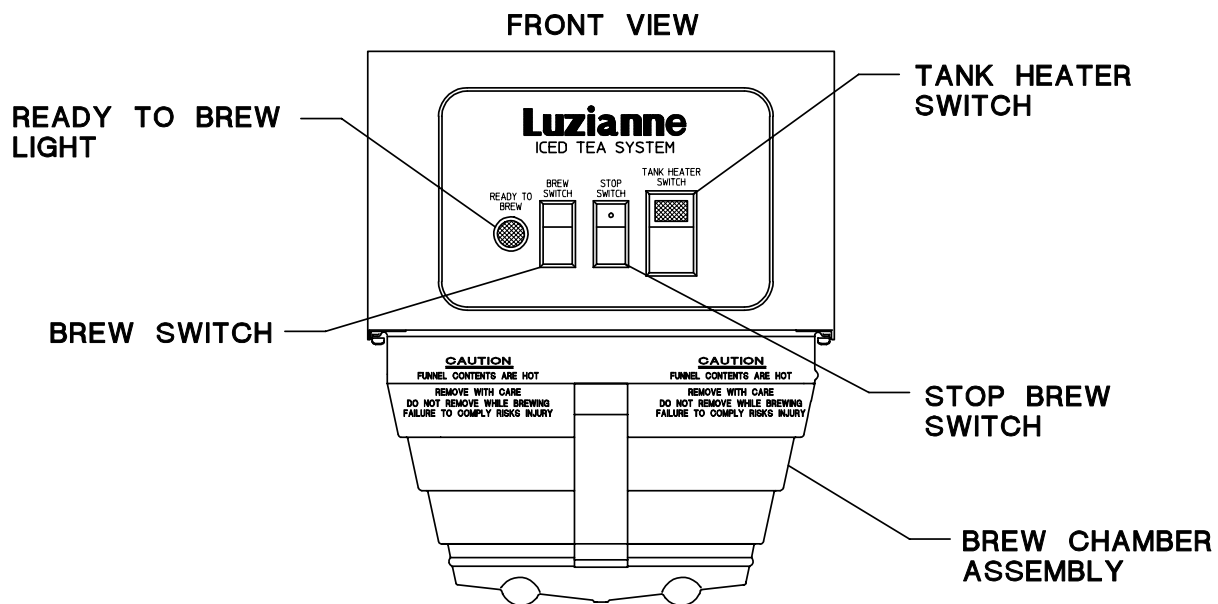
HI-QUALITY 3-5 GALLON TEA BREWER

Thank you for purchasing a Bloomfield Tea Brewer. You will achieve maximum performance from this unit if you familiarize yourself with its many outstanding features. Please take a few minutes to read through the owner's manual. Proper installation is very important if maximum performance and satisfaction are to be achieved. If you have any difficulties, consult your nearest Bloomfield Authorized Distributor. They have the required expertise to provide the proper advice and assistance. If the Bloomfield Distributor is unable to assist you, please contact the factory directly.

Please be certain the electrical connections are compatible, as improper connections could damage the Brewer and void the warranty.

Safe and satisfactory operation of your Bloomfield Brewer depends to a great extent upon its proper installation. This Tea Brewer must be installed without alteration and in accordance with these printed instructions and applicable electrical codes. The performance and safety of the Brewer can be greatly impaired if it is altered in any way, or if installation deviates from the instructions printed herein, and will not be covered under any warranty service agreement.

This Bloomfield Brewer has been designed with adjustment flexibility to cover a wide spectrum of customer needs.



INSTALLATION INSTRUCTION

READ THIS COMPLETELY BEFORE STARTING THE INSTALLATION

WARNING: DO NOT plug in or energize this unit until installation instructions are read and followed.

To enable the installer to make a quality installation and hold delay time to a minimum, the following suggestions and tests should be done before the actual unit installation is begun.

LEVELING THE UNIT

Set Tea Brewer in operating location and level. For proper unit operation, it is very important that the unit be level when it is standing in its proper operation position. A spirit level should be placed on the top plate of the unit, at the edge, as a guide when making level adjustments. Level the unit from left to right and front to back by turning the adjustable feet that support the unit.

PLUMBER'S INSTALLATION INSTRUCTION

NOTE: This equipment must be installed to comply with the Basic Plumbing Code of the Building Officials and Code Administrators International, Inc (BOCA) and the Food Service Sanitation Manual of the Food and Drug Administration. (FDA)

Flush water line before connecting to Brewer. Brewer should be connected to COLD WATER line

NOTE: Bloomfield recommends 1/4" copper tubing for installation of less than 25 feet and 3/8" for more than 25 feet from the 1/2" water supply line.

A water shut-off valve should be installed on the incoming water line in a convenient location.

Unit must be installed on a water line with a flowing pressure between 20 PSI and 90 PSI. If water pressure does not fall into this range or varies greatly, a pressure regulator should be installed in the water supply line.

Check the termination of the water line where the Brewer will stand. (The water line must terminate into a 1/4" flare fitting). Be sure to use pipe sealant (approved for potable water) on the male threads of the fitting to prevent water leak. Do not use the many varieties of liquid or pasted pipe dope, as it may leech out of the threads, pass into, and damage the unit.

Connect water line to 1/4" flare fitting on back of the unit. Turn on the water and check for leaks.

To delay build-up of lime deposits in water tank, we recommend the use of a Water Conditioner.

Filtration System may be required to delay lime deposits in water tank. Consult your Bloomfield Representative for information.

ELECTRICIAN'S INSTALLATION INSTRUCTIONS

WARNING: Brewer must be properly grounded to prevent possible shock hazard. DO NOT assume a plumbing line will provide such a ground.

Unit requires a dedicated power source capable of supplying: 115 Volt, A.C., 60 Hertz, Single Phase 15 Amp. Service.

The unit is shipped from the factory with a 3-wire, 2-pole polarized power cord and cap attached.

NOTE: Make sure tank heater switch on front panel is in OFF position. Bottom portion of switch rocker should be pressed in. Failure to turn off the element will damage the element and void warranty.

Plug unit into 110–120 Volt grounded outlet, fused at 15 Amps.

INITIAL OPERATING INSTRUCTIONS

NOTE: Operations should be performed by a qualified installer.

Electrician's and Plumber's Instructions should be followed carefully before proceeding with Initial Operating instructions.

Be sure all electrical and plumbing connections are tight.

Make sure Tank Heater Switch on Front Panel is still in OFF position.

Place empty dispenser under the Tea Brewer.

Press Brew Start Switch to initiate brewing cycle. This will energize the solenoid and will begin filling the tank. When the solenoid stops filling the tank and water does not begin to flow from the spray disc, press the Brew Switch again to continue filling the tank.

Press Brew Stop Switch when water begins to flow from spray disc.

Turn Tank Heater Switch to ON position. This will also activate bypass water valve.

Allow 30 minutes for initial water heat up. Time will vary with incoming water temperature.

When tank water is up to proper temperature, the green READY TO BREW light will be lit.

NOTE: During the initial heat-up, some water may drip from spray disc. This is normal.

Discard all water in dispenser.

Brewer is ready for use.

NOTE: Brewer is factory pre-adjusted for Three (3) Gallons of beverage.

BREWING INSTRUCTIONS

Place filter paper in Brew Chamber and add tea. Slide Brew basket into rails, pushing it to full back stop location.

Contact your tea supplier for quantity required.

Press Brew Switch to initiate brewing cycle.

Make sure drip-out is complete before removing Brew Chamber.

If for any reason there is a need to stop the brewing cycle before its completion, press the "Brew Stop" switch. This stops water flow to the Brew Chamber. The timing cycle is also canceled and timer resets to start.

Check Volume. To change the volume quantity, see "Timer Adjustment Instructions" below.

TIMER ADJUSTMENT INSTRUCTIONS

NOTE: Operations should be performed by a qualified installer.

This Brewer was Pre-Adjusted at Three (3) Gallons.

Following to be done if it is necessary to adjust the timer to match dispenser size.

All operating controls are accessible to Front Panel only.

1. Unplug power at source.
2. Remove the Front Panel by removing four (4) #8 Screws.
3. Adjust the setting on the timer on the left side of the unit to match dispenser size. (See below for recommended dial setting)

NOTE: Some fine tuning maybe necessary.

Recommended Timer Dial setting.

For water pressure of 30 psi:

To brew 3 gallons: 4:30 min. (270 Seconds)

To brew 5 gallons: 7:10 min. (430 Seconds)

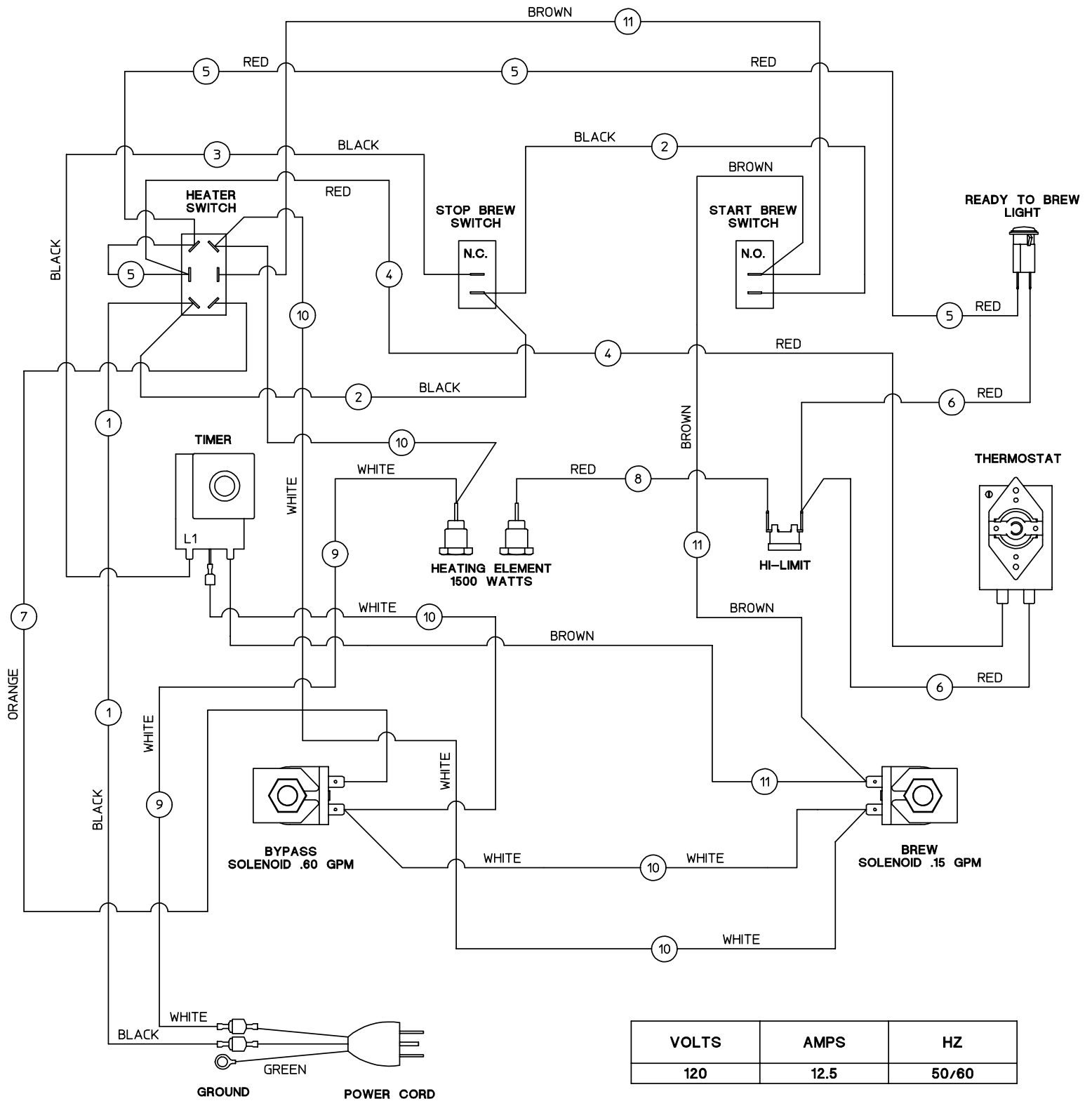
For water pressure of 60 psi:

To brew 3 gallons: 4:00 min. (240 Seconds)

To brew 5 gallons: 6:40 min. (400 Seconds)

WIRING DIAGRAM

(MODEL NO. 8357)



VOLTS	AMPS	HZ
120	12.5	50/60

PARTS IDENTIFICATION

(MODEL NO. 8357)

ITEM	SERVICE #	DESCRIPTION	QTY.
1	8043-83	THERMOSTAT HI LIMIT	1
2	8543-52	SCREW PHL SS 8 X 3/8	14
3	8812-73	CLIP BREW BASKET	1
4	8043-15	TUBE VENT	1
5	8707-2	HANDLE BLACK	1
6	8707-3	SCREW HEX 10-32X5/16	1
7	82269	TUBE WATER OUTLET 37" .312 ID	1
8	8043-11	ELBOW OUTLET	1
9	8543-23	NUT TNR ZI #8	14
10	8043-506	NUT ACR SS 8-32	2
11	8043-5	STRAP HOLD DOWN ASSY	1
12	8043-47	SCREW PAN 10-32 X 1	1
13	82671	LIGHT PILOT GREEN 125V	1
14	8043-12	GASKET TANK COVER	1
15	8043-30	GASKET ELEM HTG	4
16	8812-57	FITTING UNION 1/4X1/4	1
17	8710-10	NUT HEX BR 7/16-20 1/8	1
18	83035	TUBE OUTLET WATER	1
19	8512-41	WASHER THERMO SEAL 5/16 OD	1
20	8043-28	NUT HEX BR 1/2-20	2
21	8033-55	LEG LEVELER PLATED	4
22	35-210	STRAIN RELIEF LQ TIGHT	1
23	8033-56	LEG LEVELER	4
24	8543-69	BUSHING SHORTY HEYCO	5
25	8596-4	CORD ASSY	1
26	8942-92	NUT KEP 8-32	12
27	7200-6X	SCREW PAN PH SS 8-32X5/16	2
28	8706-20	TUBE VENT LONG	1
29	3-100	SCREW RND HD 6-32X1/4 PHL SS	2
30	8812-70	WASHER BEVELLED	1
31	7510-22	NUT HEX BR 1/2-24	1
32	8812-41	ELBOW OUTLET ASSY	1
33	8812-49	TUBE CONNECTOR 1IN	1
34	8706-9	RACK WIRE BREW CHAMBER	1
35	8812-16	BASIN COVER	1
36	8812-10	TANK ASSY WATER TEA BREWER	1
37	8551-53	WASHER SS .035X7/16IDX3/4OD	1
38	83034	FILL TUBE W/90° BEND	1
39	82665	TANK COVER WELDED ASSY	1
40	82390	GROMMET FILL TUBE	1
41	8043-14	ELEM TANK HTG 120V 1675W	1
42	8707-55	SWITCH ROCKER BREW START	1
43	9102-8	ELBOW 1/4 FPT/HOSE	2
44	8514-88	COUPLING FLARE SWIVEL	3
45	8812-40	SWITCH NORM ON-MOMEN-OFF	1
46	9102-55	TEE 1/4IN 3FL M-M/F	1
47	8781-32	ELBOW 1/8 MPT X 1/4 FLARE	2
48	82186	DISC SPRAY HEAD	1
49	82937	BASIN WLD ASSY	1
50	82939	BODY WLD ASSY	1
51	82952	PANEL FRONT	1
52	82944	BASE WLD ASSY	1
53	82214	SWITCH TANK HTR INDP LMP	1
54	82215	GASKET SPRAY HEAD	1
55	82216	THERMOSTAT W/36" CAPILLARY	1
56	9102-57	CHAMBER BREW	1

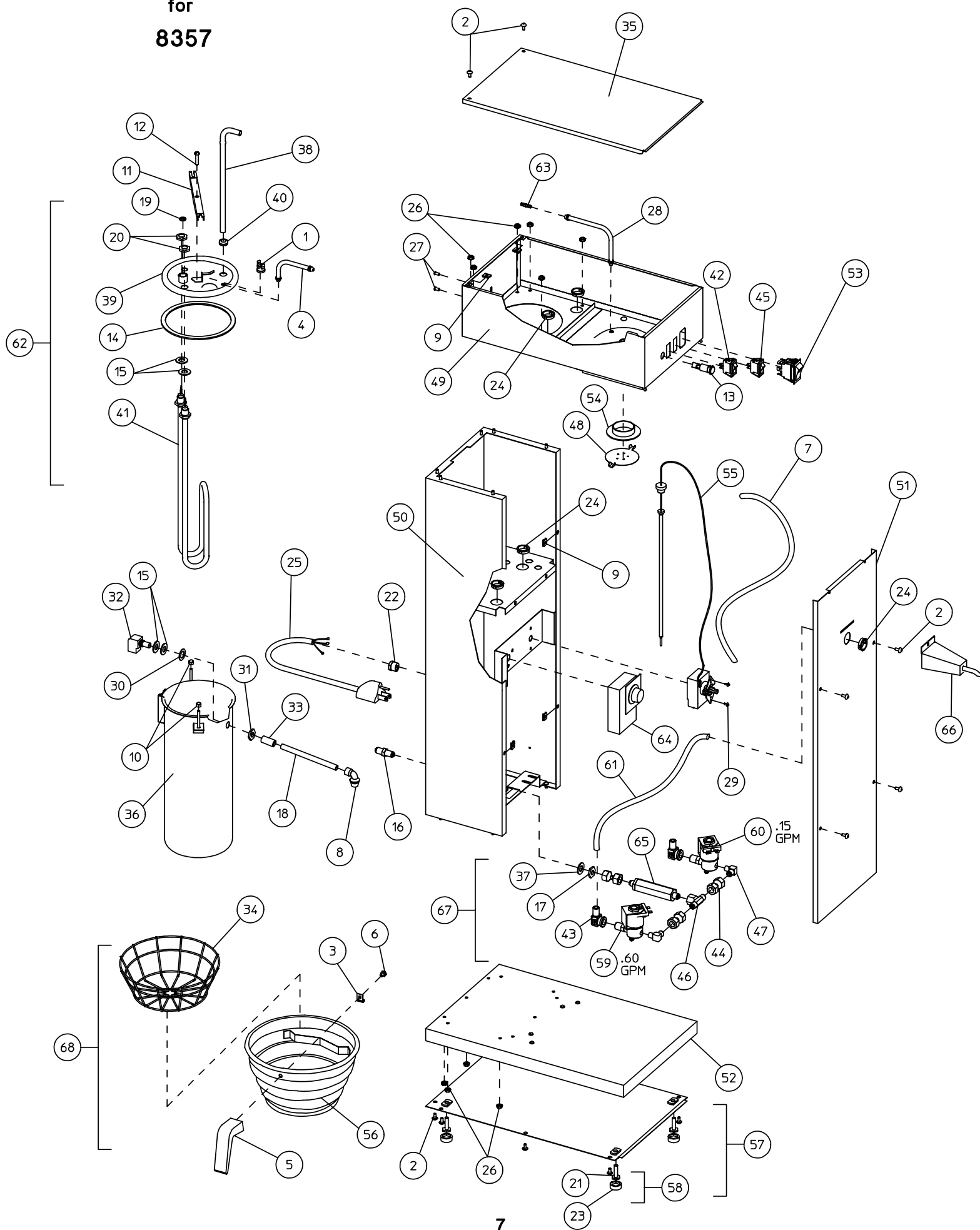
ITEM	SERVICE #	DESCRIPTION	QTY.
57	8812-75	BOTTOM PLATE ASSY	1
58	81732	LEG LEVELER ASSY	1
59	82223	VALVE SOLENOID 120V .6 GPM	1
60	82224	VALVE SOLENOID 120V .15 GPM	1
61	82661	TUBE WATER BYPASS 27"	1
62	82951	TANK COVER ASSY	1
63	82241	FTG HOSE CONNECT STRAIGHT	1
64	8812-61	TIMER 8 MIN	1
65	82245	STRAINER WATER NSF	1
66	82941	WATER SPOUT ASSY	1
67	82225	PLUMBING ASSY	1
68	9102-41	BREW CHAMBER ASSY .187 HOLE	1

OPTIONAL ACCESSORIES

	8799HLZ	3 GALLON TEA DISPENSER
	8804HLZ	5 GALLON TEA DISPENSER
	82198	EVERPURE WATER FILTER MH
	82199	EVERPURE WATER FILTER BH

EXPLODED VIEW

for
8357

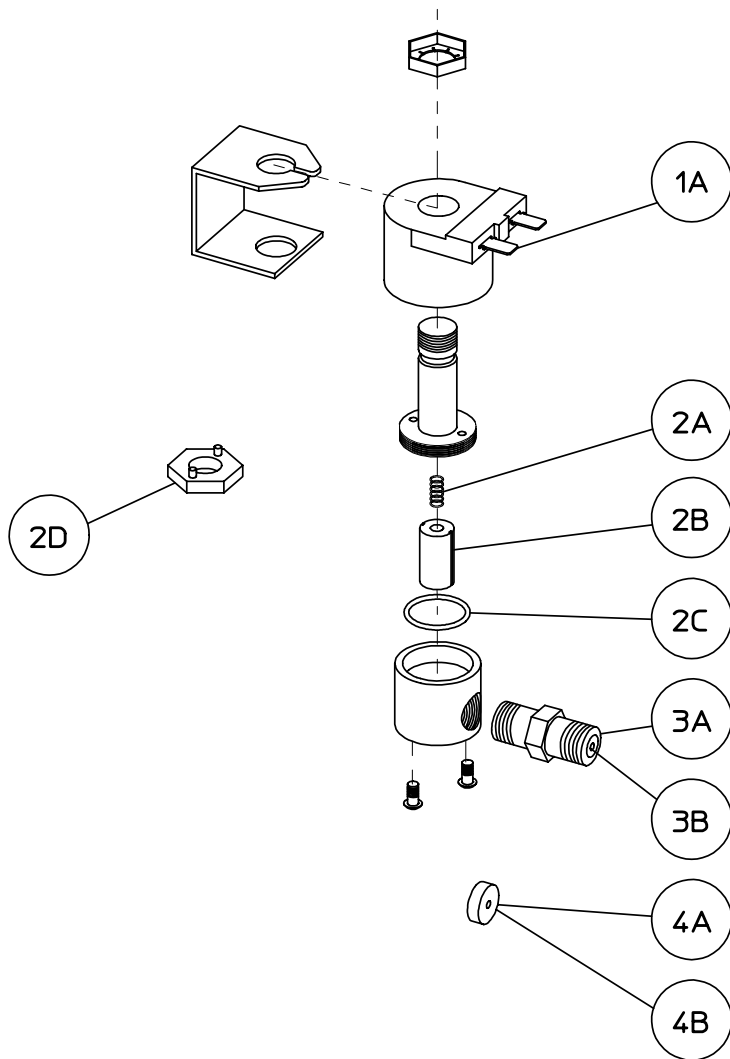


ADDITIONAL SERVICE INFORMATION

(COLD WATER ENTRANCE SOLENOID VALVE)

Part no. 82223 w/.60 GPM & Part no. 82224 w/.15 GPM

REPLACEMENT COMPONENTS



- | | | |
|-----|------------|---|
| (1) | 8541-120CS | (1A) Coil Assembly - 120V |
| (2) | 8541-120K | Solenoid Repair Kit
Vacuum Pac consists of:
(2A) Spring
(2B) Plunger
(2C) Seal Ring |
| (3) | 8541-120JS | Solenoid Repair Kit
Vacuum Pac consists of:
(2A) Spring
(2B) Plunger
(2C) Seal Ring
(2D) Service Wrench |
| (4) | 8541-126 | Solenoid Overhaul Kit
Vacuum Pac consists of:
(2A) Spring
(2B) Plunger
(2C) Seal Ring
(2D) Service Wrench
(3A) Flow Control .60 gpm |
| (5) | 8541-115 | Solenoid Overhaul Kit
Vacuum Pac consists of:
(2A) Spring
(2B) Plunger
(2C) Seal Ring
(2D) Service Wrench
(3B) Flow Control .15 gpm |
| (6) | 82223A | (4A) Flow Washer .60 gpm |
| (7) | 82224A | (4B) Flow Washer .15 gpm |
| (8) | 8541-120WS | (2D) Service Wrench |

KIT INSTALLATION INSTRUCTION:

1. Unscrew Nut (A) and set aside for later installation.
2. Lift Bracket (B) up along with Coil (C) and set aside for later installation.
3. Unscrew Part (D) by first placing a service wrench (2D) on part (D).
(Make sure service wrench mounts into both holes (E).
Set aside for later installation.
4. Refer to Diagram for Kit Part replacement.
5. Reassemble all parts as required.
6. Reinstall in Machine (Check direction of water flow) and check for leaks.

ORDERING/SERVICE PROCEDURE

Use only genuine Bloomfield replacement parts in this Brewer. The use of replacement parts other than those supplied by Bloomfield voids the warranty.

To find the parts required to restore proper operation to the Tea Brewer, proceeds as follows:

1. Refer to the exploded view located in this chapter to identify the parts needed.
2. Use the item number from the exploded view to locate the corresponding parts in the parts identification and function of this chapter.

Ordering Information – Once the parts needed are known, record the following information from the identification section:

Part Number
Description
Quantity

How to order – for immediate shipment, call your local authorized BLOOMFIELD Parts Distributor.

Service Information – To obtain service assistance in addition to that contained in this chapter, call BLOOMFIELD at (702) 345-0444

Be prepared to give the model and serial numbers of your Brewer, as well as the problem to the service technician when calling for assistance.

WARRANTY

For a period of one (1) year from date of installation, all defective parts on Bloomfield equipment will be replaced free of charge, with exception that parts that become defective through accident, neglect, improper installation, mishandling or damage in transit, or component damage caused by water supply systems pressure and scale build up in water system.

BREWER WARRANTY IS VOID IF:

Other than genuine Bloomfield replacement parts are used.

Brewer is plugged into voltage other than specified on serial plate.

Tank Heating Element is energized before water tank is filled.

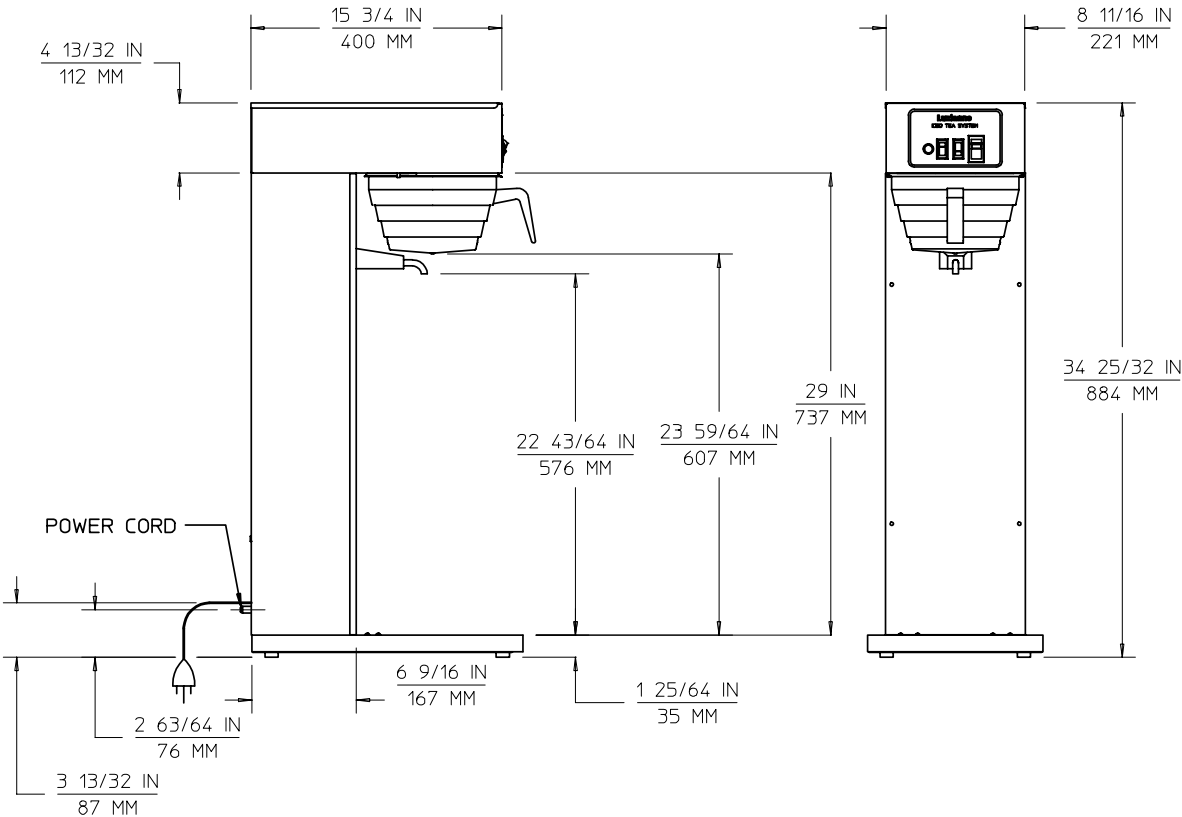
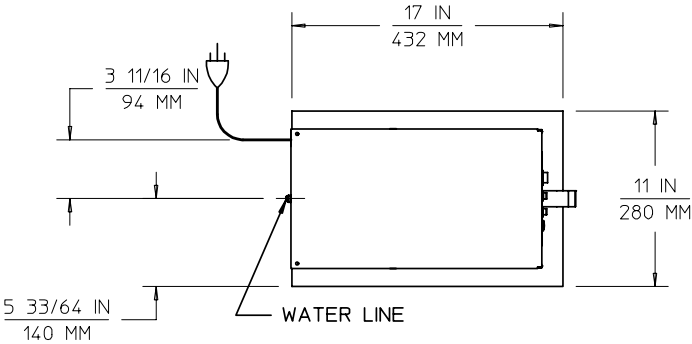
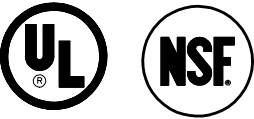
Recommended installation or servicing procedures are not followed.

Setting of circuit breakers, calibration of thermostats & timers are not covered by warranty.

GENERAL LAYOUT DATA

BLOOMFIELD 3 TO 5 GALLON TEA BREWER

MODEL: 8357



ELECTRICAL SPECIFICATIONS

POWER SUPPLY CORD
(PLUG CONFIGURATION)

MODEL	WATTS	VOLTS	HZ	AMPS SINGLE PHASE
8357	1500	120	50/60	12.5

120 VOLT, 2 POLE 3 WIRE
NEMA 5-15P HUBBELL 5264