



BLOOMFIELD INDUSTRIES
2 ERIK CIRCLE, P. O. Box 280
Verdi, NV 89439
Customer Service (775) 345-0444 Ext.502
fax: (775) 345-0569
www.wellsbloomfield.com

801.2



SS-2 Dual Satellite Brewing System With Digital Display



Shown with optional drip tray
part no. 3901

EXPLODED VIEW & PARTS LIST

INCLUDES
EXPLODED VIEWS
PARTS LISTS
WIRING DIAGRAM
ORDERING INFORMATION

WARRANTY STATEMENT

All electrical equipment manufactured by BLOOMFIELD INDUSTRIES is warranted against defects in material and workmanship for a period of one year from original purchase or eighteen months from the date of shipment from our factory, whichever comes first, and is for the benefit of the original purchaser, except that; airpots carry a 30 day warranty only; dispensers i.e. tea and coffee carry a 90 day warranty; and, decanters are excluded.

THIS WARRANTY IS THE COMPLETE AND ONLY WARRANTY, EXPRESSED OR IMPLIED IN LAW OR IN FACT, INCLUDING, BUT NOT LIMITED TO, WARRANTIES OF MERCHANTABILITY OR FITNESS FOR ANY PARTICULAR PURPOSE, AND/OR INDIRECT OR CONSEQUENTIAL DAMAGES IN CONNECTION WITH BLOOMFIELD PRODUCTS.

This warranty is void if it is determined upon inspection by an Authorized Service Agency that the equipment has been modified, misused, misapplied, improperly installed, or damaged in transit or by fire, flood or act of God.

It also does not apply if the serial nameplate has been removed or service is performed by unauthorized personnel.

The prices charged by Bloomfield Industries for its products are based upon the limitations in this warranty. Seller's obligation under this warranty is limited to repair of defects without charge by a Bloomfield Industries Authorized Service Agency or one of its sub-agencies. This service will be provided on customer's premises for non-portable models. Portable models (a device with a cord and plug) must be taken or shipped to the closest Authorized Service Agency, transportation charges prepaid for service.

In addition to restrictions contained in this warranty, specific limitations are detailed in the *ADDITIONAL WARRANTY EXCLUSIONS* section. Bloomfield Industries Authorized Service Agencies are located in principal cities.

This warranty is valid in the United States and void elsewhere. Please consult your classified telephone directory, your food service equipment dealer, or, for information and other details concerning warranty write to:

Service Parts Department
Bloomfield Industries
P. O. Box 280

Verdi, Nevada 89439

☎ (775) 345-0444 fax (775) 345-0569

SERVICE POLICY AND PROCEDURE GUIDE ADDITIONAL WARRANTY EXCLUSIONS

1. Resetting of safety thermostats, circuit breakers, overload protectors, or fuse replacements unless warranted conditions are the cause.
2. All problems due to operation at voltages other than specified on equipment nameplates—conversion to correct voltage must be the customer's responsibility.
3. All problems due to electrical connections not made in accordance with electrical code requirements and wiring diagrams supplied with the equipment.
4. Replacement of items subject to normal wear, to include such items as knobs and light bulbs. Normal maintenance functions including adjustment of thermostats, microswitches, and replacement of fuses and indicating lights are not covered under warranty.
5. All problems due to inadequate water supply, such as fluctuating, or high or low water pressure.
6. All problems due to mineral/calcium deposits, or contamination from chlorides/chlorines. De-liming is considered a preventative maintenance function and is not covered by warranty.

7. Full use, care and maintenance instructions are supplied with each machine. Those miscellaneous adjustments noted are customer responsibility. Proper attention will prolong the life of the machine.
8. Travel mileage is limited to sixty (60) miles from an authorized Service Agency or one of its sub-agencies.
9. All labor shall be performed during normal working hours. Overtime premium shall be charged to the customer.
10. All genuine Bloomfield replacement parts are warranted for ninety (90) days from date of purchase on non-warranted equipment. **Any use of non-genuine Bloomfield parts completely voids any warranty.**
11. Installation, labor and job check-out are not considered warranty.
12. Charges incurred by delays, waiting time or operating restrictions that hinder the service technicians ability to perform services are not covered by warranty. This includes institutional and correctional facilities.

SHIPPING DAMAGE CLAIMS PROCEDURE

NOTE: For your protection, please note that equipment in this shipment was carefully inspected and packaged by skilled personnel before leaving the factory. Upon acceptance of this shipment, the transportation company assumes full responsibility for its safe delivery.

IF SHIPMENT ARRIVES DAMAGED:

1. **VISIBLE LOSS OR DAMAGE:** Be certain that any visible loss or damage is noted on the freight bill or express receipt, and that the note of loss or damage is signed by the delivery person.
2. **FILE CLAIM FOR DAMAGE IMMEDIATELY:** Regardless of the extent of the damage.

3. **CONCEALED LOSS OR DAMAGE:** if damage is unnoticed until the merchandise is unpacked, notify the transportation company or carrier immediately, and file "CONCEALED DAMAGE" claim with them. This must be done within fifteen (15) days from the date the delivery was made to you. Be sure to retain the container for inspection.

Bloomfield Industries cannot assume liability for damage or loss incurred in transit. We will, however, at your request, supply you with the necessary documents to support your claim.

TABLE OF CONTENTS

WARRANTY STATEMENT	xi
EXPLODED VIEW & PARTS LIST	
CABINET & EXTERIOR COMPONENTS	2
INTERIOR COMPONENTS	4
SATELLITE	6
WIRING DIAGRAM	8
ORDERING / SERVICE PROCEDURE	9

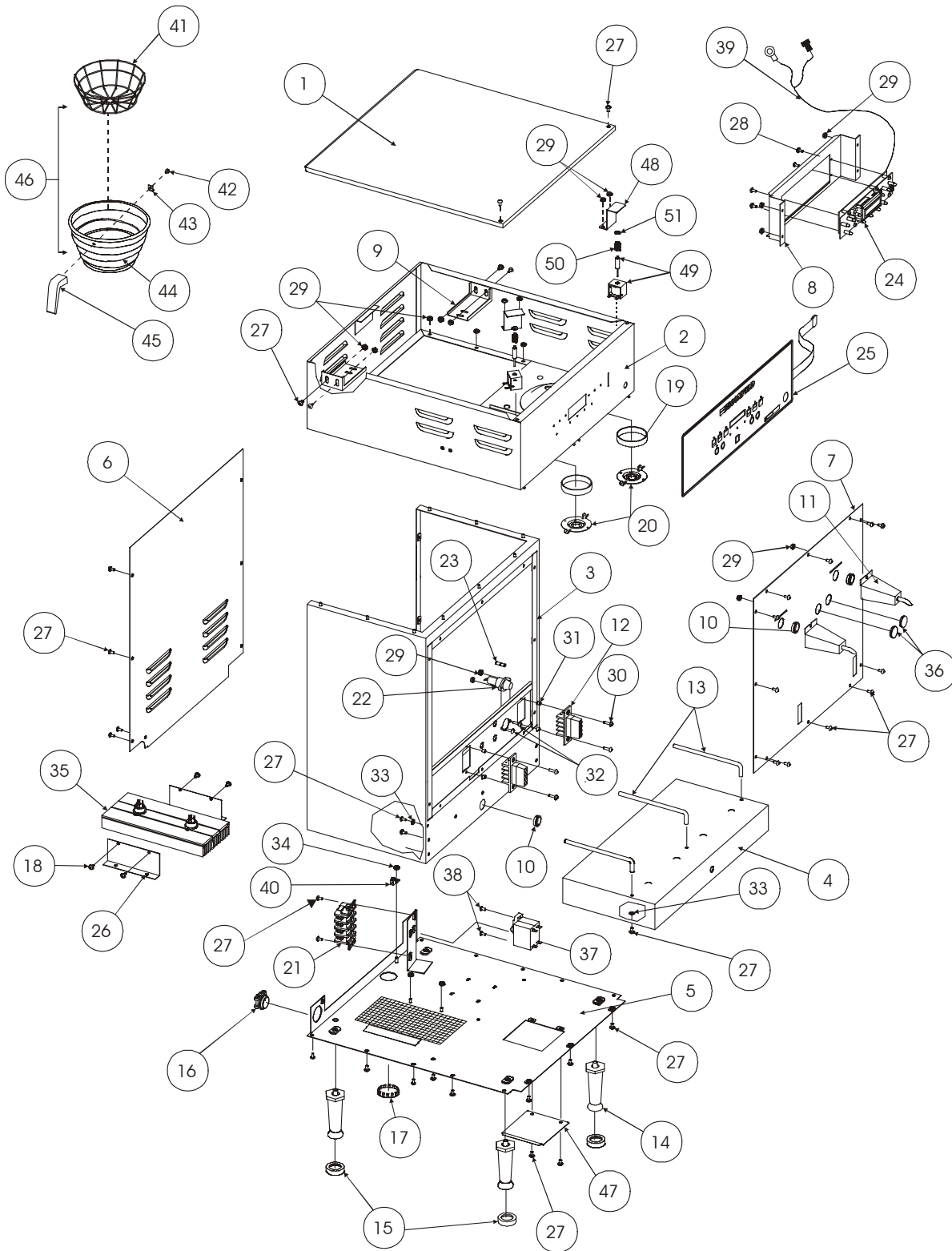
INTRODUCTION

Thank You for purchasing this Bloomfield Industries coffee brewer. The designed-in flexibility of this Bloomfield brewer will allow you to adjust to a wide spectrum of brewing needs.

Proper installation, professional operation and consistent maintenance of this appliance will ensure that it gives you the very best performance and a long, economical service life. You will achieve maximum performance from this unit if you familiarize yourself with its many outstanding features.

This manual contains the information regarding the physical components of the brewing system.

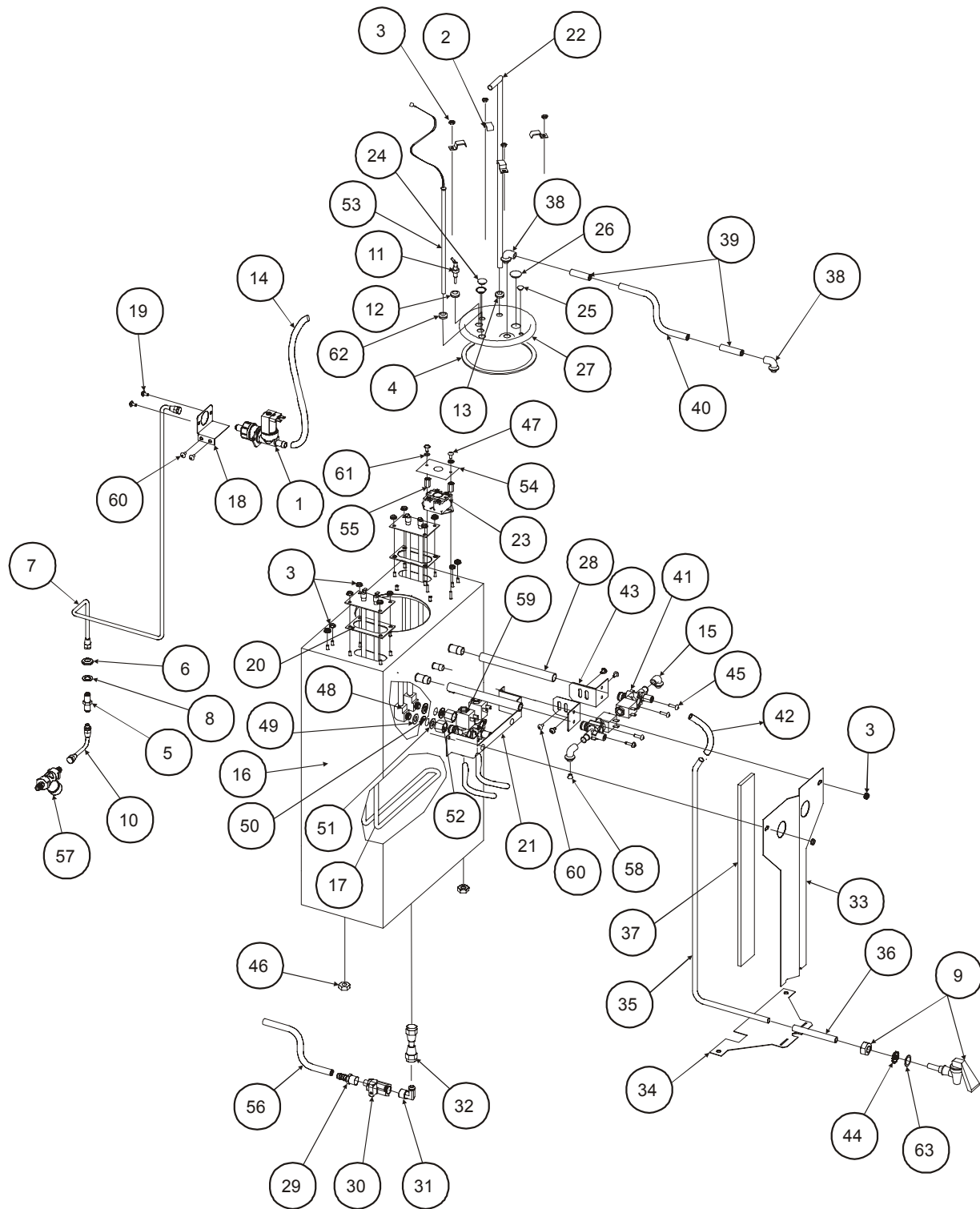
EXPLODED VIEW CABINET AND EXTERIOR COMPONENTS



EXPLODED VIEW CABINET AND EXTERIOR COMPONENTS

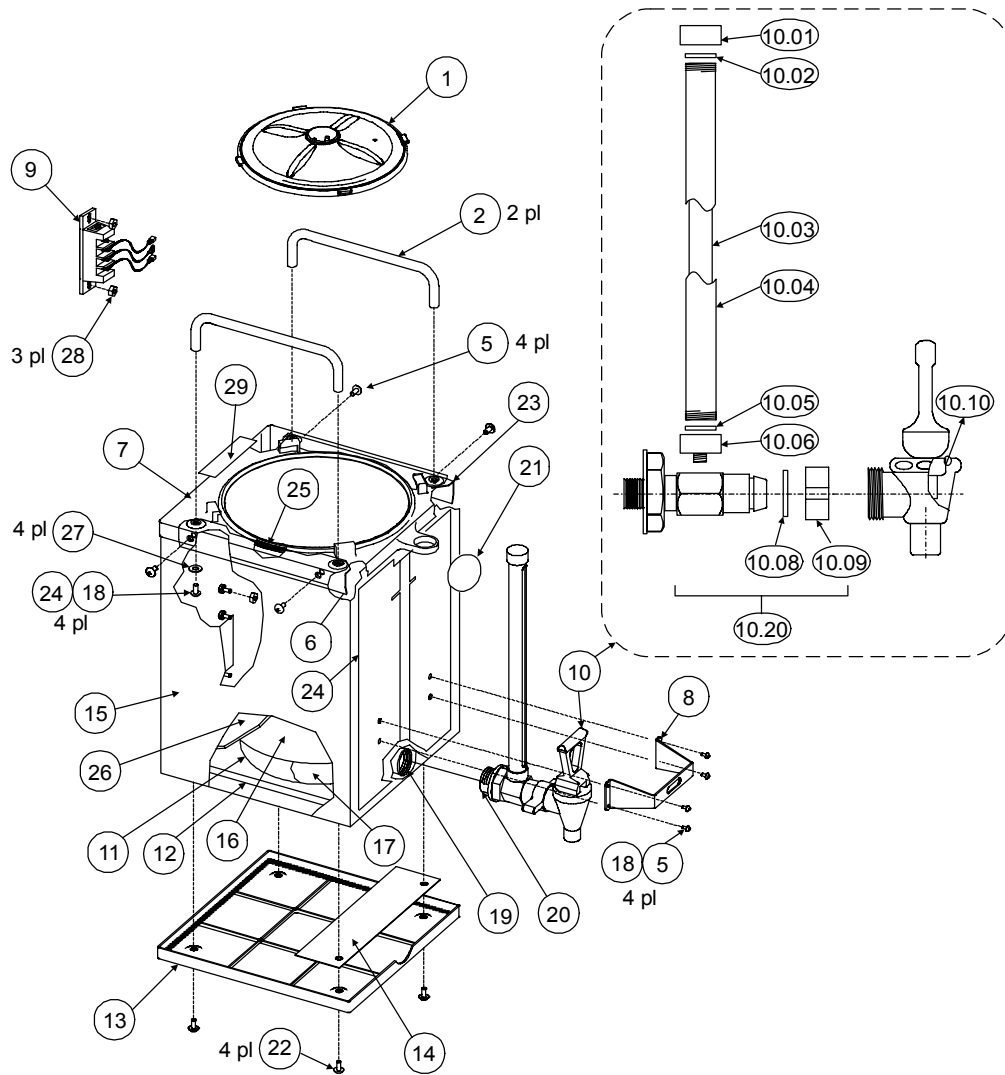
ITEM	SERVICE #	DESCRIPTION	QTY.
1		COVER TOP HOUSING SS2	1
2		TOP HOUSING WLD ASSY SS2	1
3		BODY WLD ASSY SS2	1
4		BASE WLD ASSY SDS-2	1
5		BTM PLATE WLD ASSY	1
6		PANEL BACK SS2	1
7		PANEL FRONT SS2	1
8		BRACKET CONTROL BOARD MTG SS2	1
9		BRACKET TANK SUPPORT TOP SS2	2
10	8543-69	BUSHING SHORTY HEYCO	3
11	82738	SPOUT ASSY	2
12	83046	CONNECTOR WIRED ASSY SDS-2	2
13	83077	HANDLE GUIDE "L"	3
14	83098	LEG 4 IN FLANGE PLASTIC BLK	4
15	83107	FEET RUBBER BLACK	4
16	500102	STRAIN RELIEF	1
17	57512	PLUG HOLE 1 3/8	1
18		SCREW, PAN, NI #8-32 X 1/4 4	
19	8543-42	GASKET SPRAY HEAD	2
20	84132	DISC SPRAY HEAD EMBOSSED	2
21	60310	TERM BLOCK 4 POLE	1
22	8875-68	FUSEHOLDER	1
23	8875-69	FUSE	1
24	84564	BOARD SET CUSTOM PROGRAMMED	1
25	84099	OVERLAY CONTROL PANEL SS2	1
26		BRACKET HEAT SINK SS2	2
27	7200-6X	SCREW PAN PH SS 8-32 X 5/16	56
28	68748	SCREW PAN 4-40 X 3/8 BLK	4
29	8942-92	NUT KEP 8-32 SS	25
30	51243	SCREW 8-32 X 7/8	4
31	83362	SPACER 8-32 X 1/4	4
32	7506-39	SCREW PAN 8-32 X 1/2	2
33		WASHER #8 EXT SEMS	6
34		NUT HEX SS 10-32	1
35	83878	HEAT SINK & TRIAC ASSY DUAL	1
36	8705-36	PLUG BUTTON 7/8	2
37	84098	SWITCH 2 POLE 50A	1
38	3-100	SCREW #6-32 X 1/4 SS	2
39	83552	WIRE ASSY WATER LVL PROBE SS2	1
40	55313	LUG GROUND SOLDERLESS 6-14G	1
41	8706-9	RACK WIRE CHAMBER	2
42	8707-3	SCREW BREW CHAMBER	2
43	8812-73	CLIP WIRE RACK	2
44	83101	CHAMBER BREW	2
45	8707-2	HANDLE BREW CHAMBER	2
46	83100	BREW CHAMBER ASSY	2
47	8572-34	DOOR ACCESS	1
48		BRACKET, SOLENOID, LOCKOUT	2
49	84096	SOLENOID, LOCKOUT	2
50	84423	SPRING, COMPRESSION	2
51	51038	RETAINER CLIP TINERMAN BLACK	2

EXPLODED VIEW INTERIOR COMPONENTS



ITEM	SERVICE #	DESCRIPTION	QTY.	ITEM	SERVICE #	DESCRIPTION	QTY.
1	84427	ASSY WATER INLET	1	58	83571	INSERT SPRAY-HEAD SS2	2
2	83778	RETAINING CUP TANK LID	4	59	83617	BYPASS VALVE ASSEMBLY	1
3	8942-92	NUTKEP8-32SS	16		INCLUDE KC VALVE (WHITE BODY)		
4	8043-12	GASKET COVER TANK	1		1 82729	VALVE, KC	
5	8812-57	FITTING UNION 1/4X1/4	1		1 83570	INSERT, BYPASS	
6	8710-10	NUT HEX BR 7/16-20X1/8	1		1 83537	TUBE, SILICONE 9"	
7	84430	TUBE ASSY FORMED	1		83618	BYPASS VALVE ASSEMBLY	1
8	8551-53	WASHER SS .035X7/161DX3/400	1		INCLUDE DELTROL VALVE (BLUE COIL)		
9	8783-1	FAUCET HOT WATER	1		1 83388	VALVE DELTROL	
10	8540-4	TUBE COPPER 90° BEND	1	60	1 83570	INSERT BYPASS	
11	82114	PROBE 8783MCD	1		1 83537	TUBE, SILICONE 9"	
12	82115	GROMMET 1/4 ID TRANSLUCENT	1		7200-6X	SCREW PAN PH SS 8-32 X 5/16	6
13	82390	GROMMET .375 ID TRANSLUCENT	1	61		WASHER FLAT SS M	2
14	83385	TUBE INLET	1	62	84063	GROMMET, .5100 HOLEX 1/4	1
15	83152	ELBOW SPRAYER	2	63	82681	WASHER FLAT 15/32 X 1 1/8 SS	1
16		TANK WLD ASSY SS2	1				
17	84097	ELEMENT 5000W 240V	2				
18		BRACKET SOLENOID VALVE SS2	1				
19		SCREW PAN SLT SS 4MM X BMM	2				
20	83309	GASKET TANK HEATER SS2	2				
21	83572	BRACKET BYPASS DOUBLE	1				
22	83311	FILL TUBE 90DEG BEND SS2	1				
23	83312	THERMOSTAT HI-LIMITDBL POLE	1				
24	83318	PLUG TANK LID .510 DIA.	2				
25	83319	PLUG TANK LID .298 DIA.	1				
26	83320	PLUG TANK LID .687 DIA.	1				
27	83325	TANK LID WELDED ASSY SS2	1				
28	83314	TUBE TANK TO VALVE SS2	2				
29	67662	FTG BARB 3/8 TO HOSE	1				
30	66575	VALVE SHUTOFF DRAIN	1				
31	83605	ELBOW MALE 5/8 TO 3/8 90"	1				
32	83380	TUBE ASSY 3/8 COPPER DRAIN	1				
33		RETAINER, TUBE	1				
34		BOTTOM PLATE. TUBE RETAINER	1				
35	84434	TUBE, FORMED SS	1				
36	84433	TUBE SILICONE .312 I.O.	1				
37	84435	INSULATION FAUCET GUARD	1				
38	8043-11	ELBOW OUTLET	2				
39	83384	TUBE VENT EXTENSION	2				
40	83537	TUBE SILICONE 9"	1				
41	83388	VALVE DISPENSING ADJUST	2				
42	84650	TUBE SILICONE .312 I.D. 4.8"	1				
43		BRACKET BYPASS VALVE	2				
44	82148	WASHER LOCK	1				
45	' 65001	SCREW 10-32X1/2	4				
46	55485	NUT 1/4-20 (PACK OF 100)	1				
47	3-100	SCREW #6-32 X 1/4 SS	2				
48	82741	FTG STAND PIPE	2				
49	8812-70	WASHER BEVELED	2				
50	8043-30	WASHER SILICONE	2				
51	83147	WASHER GYLON	2				
52	82739	NUT STAND PIPE	2				
53	83313	PROBE THERMISTOR	1				
54	83414	SHIELD HI-LIMIT THERMOSTAT	1				
55	83415	NUT 6-32 X1'LG	2				
56	83553	TUBE SILICONE 72"	1				
57	83027	STRAINER	1				

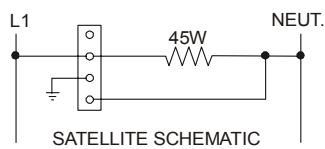
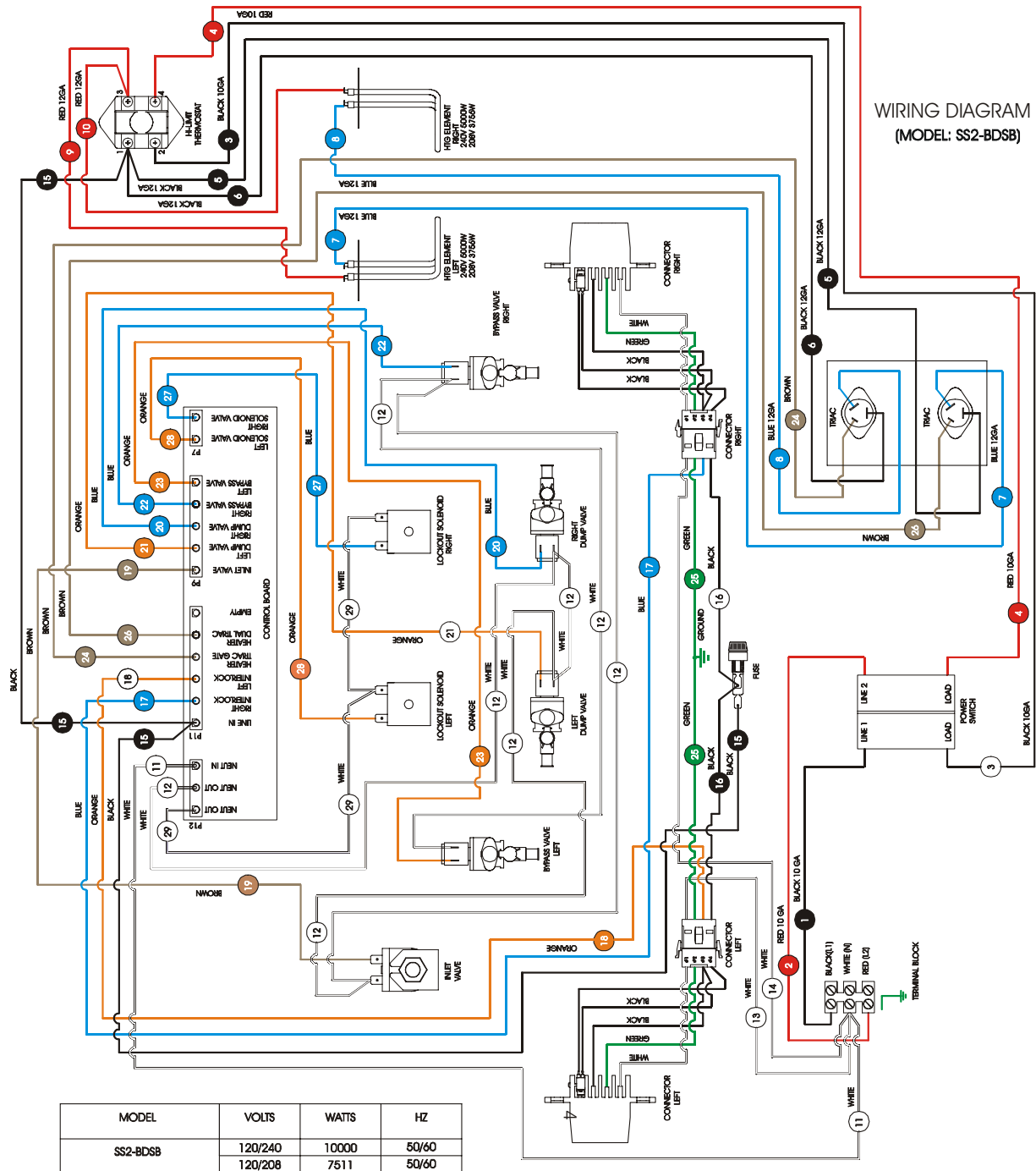
EXPLODED VIEW SATELLITE



EXPLODED VIEW SATELLITE

ITEM	SERVICE #	DESCRIPTION	QTY
1	83863	TANK LID ASSY	1
2	83099	HANDLE, SATELLITE TOP	2
3	83557	RETAINER	1
4		WASHER	1
5		SCREW, 8-32x3/8" BLK OXIDE	8
6		STIFFENER BRACKET, LEFT	1
7	83558	TOP COVER, SATELLITE	1
8	84326	HANDLE GUARD, FAUCET	1
9	83895	RECEPTACLE, WIRED ASSEMBLY	1
10	83112	FAUCET w/SIGHT GLASS, 10"	1
10.01	8600-17	SHIELD CAP	1
10.02	8700-25J	CAP WASHER	1
10.03	8705-11C	SIGHT GLASS	1
10.04	8600-20	SHIELD ASSY	1
10.05	8705-11B	BASE WASHER	1
10.06	8705-11G	SHIELD BASE	1
10.08	8600-26	C-RING	1
10.09	8600-27	WING NUT	1
10.10	8700-25L	SEAT CUP	1
10.20	8705-11D	SHANK ASSY	
11	83114	ELEMENT, HEATER 45W	1
12	83117	TANK INSULATION	1
13	83057	BASE, POLYPROPYLENE	1
14		PLATE, STIFFENER	1
15		WELDEMENT, SATELLITE BODY	1
16		TANK SUB ASSY w/FITTINGS	1
17		TAPE, GLASS CLOTH	.33
18		THREADLOCK, RED	A/R
19	8705-26	SEAL, DRAIN FITTING	2
20		TAPE, TEFLON	1.74
21	84105	LABEL, SATELLITE	1
22		SCREW, PAN PHL 8-32x1/2"	6
23		STIFFENER BRACKET, RIGHT	1
24		SCREW, TRS PHL SS 10-32x3/8"	4
25	8705-33	O-RING	1
26	82559	LYTHERM TANK WRAP	1
27		WASHER #10	4
28	8942-92	NUT, KEP. SS 8-32	3
29	83132	LABEL, CAUTION "DO NOT IMMERSE..."	1
30			

WIRING DIAGRAM



ORDERING / SERVICE PROCEDURES

Use only genuine Bloomfield replacement parts in this brewer. The use of replacement parts other than those supplied by Bloomfield voids the warranty.

Parts are available at your Authorized Bloomfield Service Agency. Locations and phone numbers are listed in the Agency Listing provided with all equipment.

To find the parts required to restore proper operation to the coffee brewer, proceed as follows:

1. Refer to the exploded views located in this manual to identify the parts needed.
(Pages 9 & 11)
2. Use the item number from the exploded view to locate the corresponding part number in the parts identification and function of this manual.

Ordering Information - Once the parts needed are known, record the following information from the Identification Name Plate on the side of the Unit and Parts Identification Section on pages (10 & 12).

Model: Serial Number:

Part No.	Description	Qty	Part No.	Description	Qty
<input type="text"/>	<input type="text"/>	<input type="text"/>	<input type="text"/>	<input type="text"/>	<input type="text"/>
<input type="text"/>	<input type="text"/>	<input type="text"/>	<input type="text"/>	<input type="text"/>	<input type="text"/>
<input type="text"/>	<input type="text"/>	<input type="text"/>	<input type="text"/>	<input type="text"/>	<input type="text"/>
<input type="text"/>	<input type="text"/>	<input type="text"/>	<input type="text"/>	<input type="text"/>	<input type="text"/>
<input type="text"/>	<input type="text"/>	<input type="text"/>	<input type="text"/>	<input type="text"/>	<input type="text"/>
<input type="text"/>	<input type="text"/>	<input type="text"/>	<input type="text"/>	<input type="text"/>	<input type="text"/>
<input type="text"/>	<input type="text"/>	<input type="text"/>	<input type="text"/>	<input type="text"/>	<input type="text"/>
<input type="text"/>	<input type="text"/>	<input type="text"/>	<input type="text"/>	<input type="text"/>	<input type="text"/>
<input type="text"/>	<input type="text"/>	<input type="text"/>	<input type="text"/>	<input type="text"/>	<input type="text"/>
<input type="text"/>	<input type="text"/>	<input type="text"/>	<input type="text"/>	<input type="text"/>	<input type="text"/>
<input type="text"/>	<input type="text"/>	<input type="text"/>	<input type="text"/>	<input type="text"/>	<input type="text"/>
<input type="text"/>	<input type="text"/>	<input type="text"/>	<input type="text"/>	<input type="text"/>	<input type="text"/>
<input type="text"/>	<input type="text"/>	<input type="text"/>	<input type="text"/>	<input type="text"/>	<input type="text"/>
<input type="text"/>	<input type="text"/>	<input type="text"/>	<input type="text"/>	<input type="text"/>	<input type="text"/>
<input type="text"/>	<input type="text"/>	<input type="text"/>	<input type="text"/>	<input type="text"/>	<input type="text"/>

How to order - For immediate shipment, call your local BLOOMFIELD INDUSTRIES Authorized Service Agency.

Service Information - To obtain service assistance in addition to that contained in this chapter, call BLOOMFIELD in the U.S. at (775) 345-0444 or email at service@wellsbloofield.com.

Be prepared to give the model and serial numbers of your brewer, as well as the problem and the troubleshooting steps already taken, to the service technician when calling for assistance.



Bloomfield Industries, Inc.

PO. Box 280 Verdi, NV. 89439
Ph. 775/345-0444 Fax 888/492-2783
Service: 1-888/492-2783
website: www.wellsbloomfield.com

Bloomfield Industries Canada Limited

5850 Keaton Crescent
Mississauga, Ontario, Canada L5R 3K2
Ph. 905/507-1700 Fax 905/507-1777
Toll Free 1-877-507-1700
website: www.bloomcan.com
e-mail: brewinfo@bloomcan.com



Carrier

A United Technologies Company