



BC14G SERIES

SERIAL NUMBERS WITH IW/IX/IZ/JG/JO REPLACEMENT PARTS LIST



EFFECTIVE JUNE 17, 2010

BLODGETT OVEN COMPANY, 44 Lakeside Avenue, Burlington, Vermont 05401 USA

Telephone: (802) 860-3700 (800) 331-5842 Fax: (802) 860-3732

www.blodgett.com

P/N 53534

Superseding All Previous Parts List.

The Company reserves the right to make substitution in the event that items specified are not available.

ERRORS: Descriptive and or typographical errors are subject to correction.

TABLE OF CONTENTS

CONTROL PANEL COMPONENTS3

RELAY MODEL ASSEMBLY4

DOOR COMPONENTS5

STEAM GENERATOR COMPONENTS6

HOT AIR GAS COMPONENTS7

INTERIOR OVEN COMPONENTS8

EXTERIOR OVEN COMPONENTS9

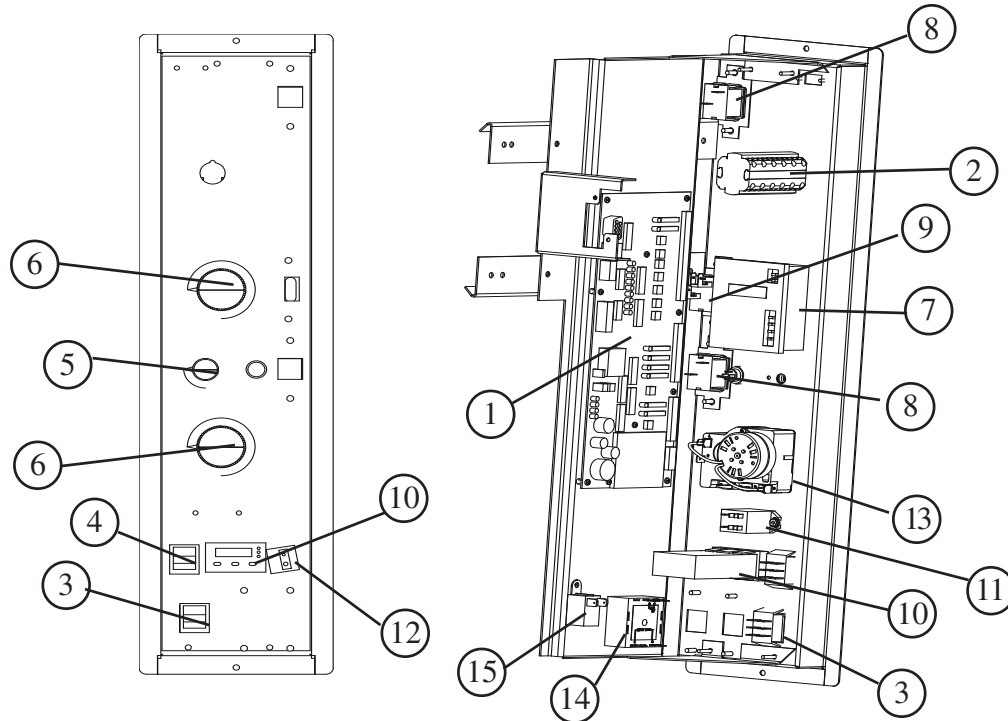
PLUMBING COMPONENTS10

TRANSFORMERS 11

AUTO DELIMING KITS12

ACCESSORIES13

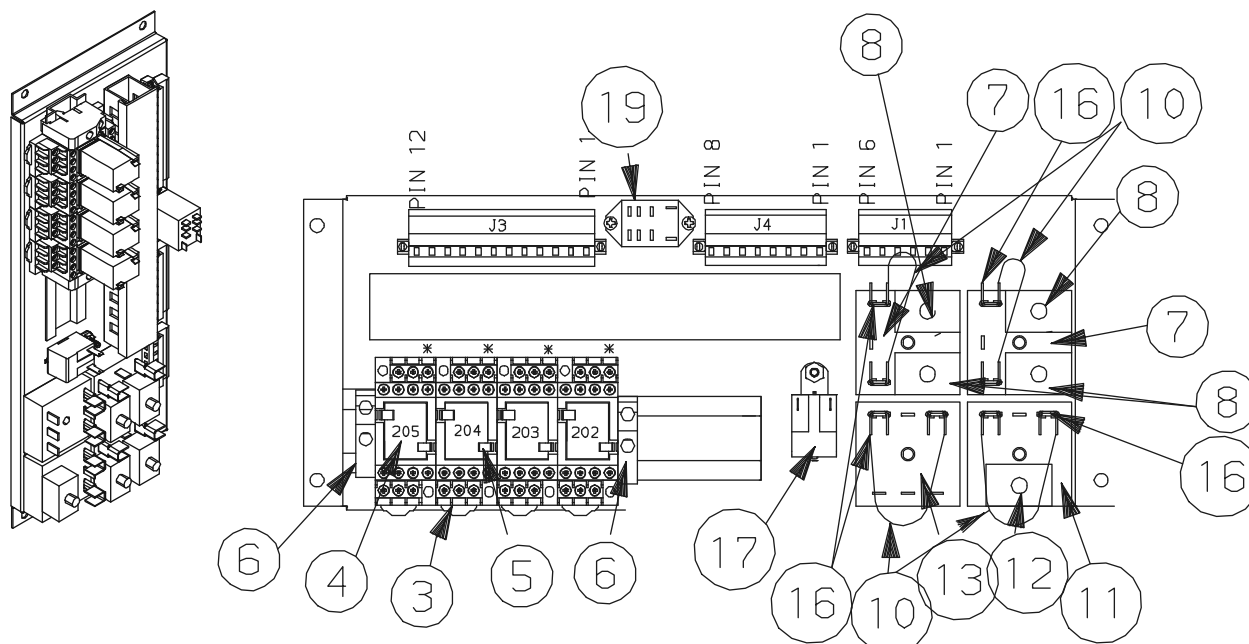
CONTROL PANEL COMPONENTS



<u>Ref</u>	<u>Description</u>	<u>Part No.</u>	<u>Ref</u>	<u>Description</u>	<u>Part No.</u>
1	Logic Board	R10353	8	Light, Indication- Green	R1318
	Relay, Logic	33902	9	Light, Indication- Clear	R0226
	Switch, Hi/Low	R8594		Light, Indicator - Blue	R9567
	Relay, 24V, SPDT	R7689		Fuse Holder	M3167
11	Relay, DPST 240V	R2792	10	Control, Meat Probe 24V	R7692
3	Switch, Flush/Drain	R2715		Transformer, 208/240V-24V	52948
2	Switch, Mode	R4623	10	Control, Meat Probe 208V	R5242
	Knob and Shaft Assy, mode	R8515		Probe, Meat plug-in	R5315
7	Controller, Digital	R7403	4	Switch, Meat probe	R8740
	Sensor, Temperature	R6928	14	Control, Motor speed	R9309
7	Thermostat, Manual	R6407		Resistor, Motor, Speed	R9386
	Probe, Thermostat	R6003	12	Connector, Jack Panel	R5219
	Potentiometer, Steam	R9384		Tape, .01 x .375 VHB	R9615
	Switch, Steam Demand	R8595		(per foot)	
13	Timer, 120 Minute, 60 hz	R2666		Resistor Assy	R8724
	Timer, 120 Minute, 50 hz	R3942		Bracket, Fuseholder	R7715
	Wire, T/C Meat Probe Jack	R5325		Fuse, 2 Amp, 24V	R7717
15	Buzzer Kit, 240V	R9498			
5	Knob, Small	R8743			
6	Knob, Large	R8742			

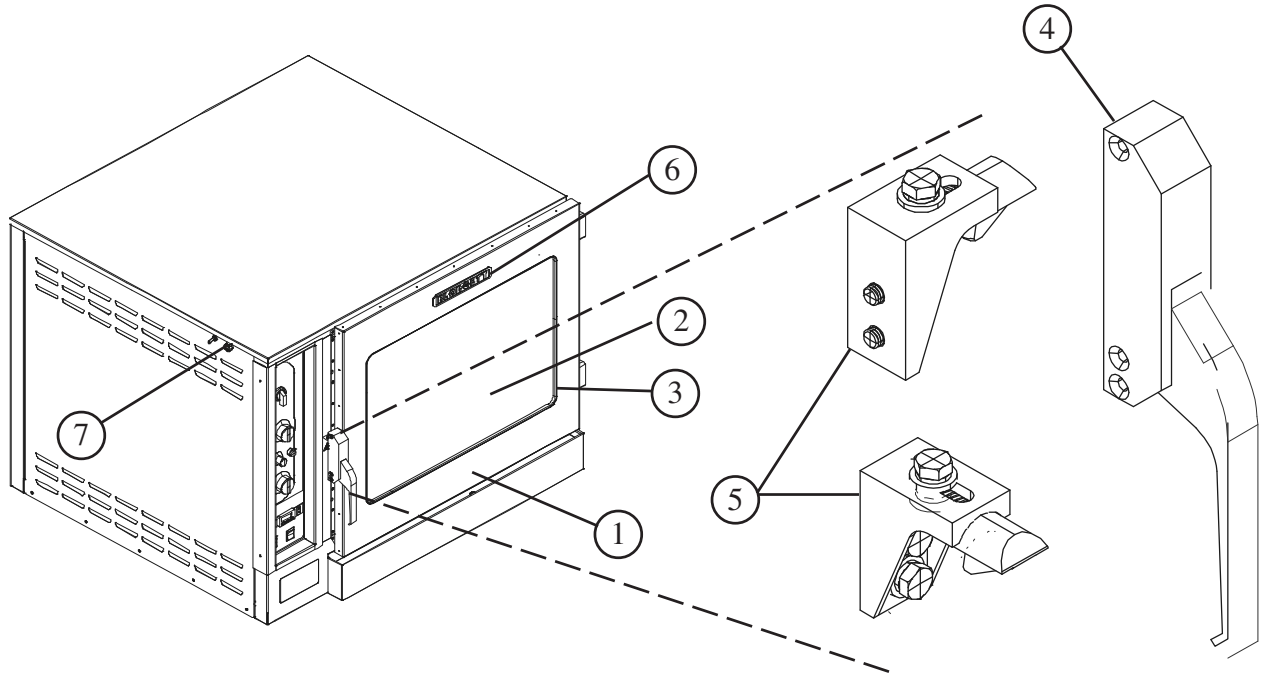
CONTROL PANEL CONTINUED

Relay Module Assembly



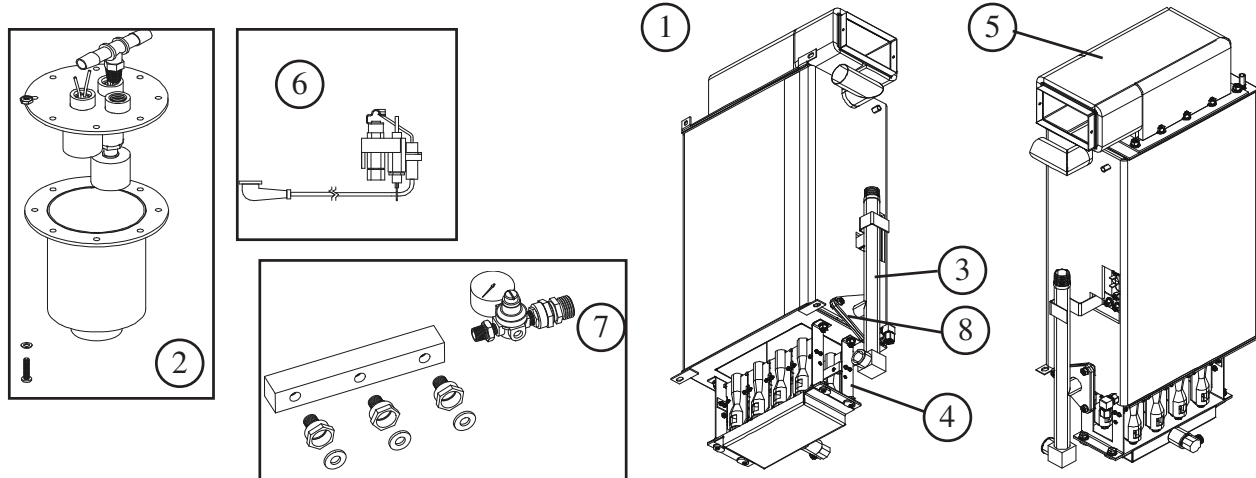
<u>Ref. No.</u>	<u>Description</u>	<u>Qty.</u>	<u>Part No.</u>
3	Socket, relay	4	33922
4	Relay, logic	4	33902
5	Clips, hold down	8	33923
6	Stop, end	2	R1580
7	Solid state timer, 230V combi	2	R8592
8	Potentiometer, 0.1 to 4.0 minutes	4	R8592
10	Resistor assy	4	R8883
11	Solid state timer, 230V flush	1	R8586
12	Potentiometer, 0.1 to 6.0 minutes	1	R8593
13	Solid state timer, 230V steam demand	1	R8584
16	Piggy back	8	15937
17	Buzzer, 230V	1	35886
19	Relay, DPST 240V	1	R2792

DOOR COMPONENTS



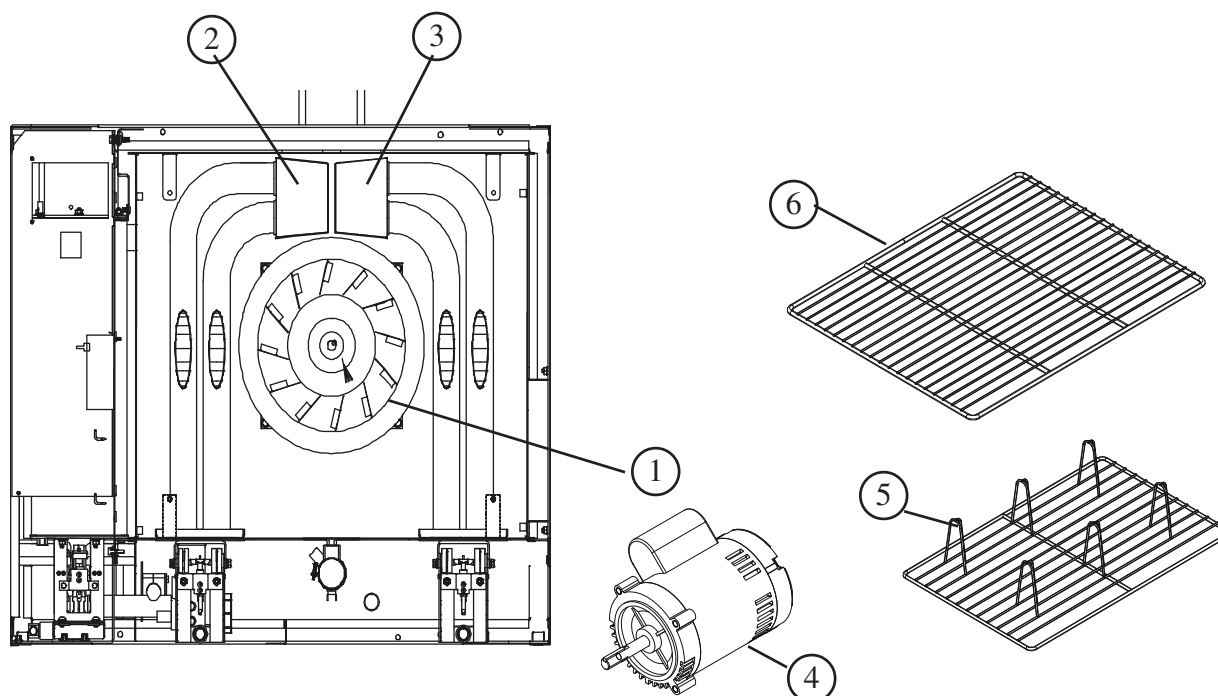
<u>Ref</u>	<u>Description</u>	<u>Part No.</u>
1	Door Assy	R8628
	Gasket, Door Perimeter	R3695
	Retainer Strip, Gasket, Horizontal	R3774
	Retainer Strip, Gasket, Vertical	R3775
2	Glass Window, Door	R5797
3	Gasket, Door Window,(per foot- 17 total ft)	R2105
4	Handle, Door	R6313
	Screws, Door Handle, set of 3	R11043
5	Catch and Latch Assy	R2296
	Latch, Door	R2780
	Catch, Door	R2781
	Screw, M5 x 8-16 (Before 1992)	R0031
	Switch, Door	31485
	Magnet, Door Switch(2)	R7808
	Bracket Assy, Door Switch	R8944
	Hinge Assy, Top and Bottom	R8482
	Drip Pan	R10327
	Trough, Door Drip Pan	R9573
6	Nameplate, 7-3/4" BLODGETT	90086
7	Deliming, Port Kit (hose fitting)	R11018
	Deliming, Fitting on Pump (male)	R8084
	Deliming, Port Female quick disconnut	R10062
	Toggle Switch	R9400

STEAM GENERATOR COMPONENTS



<u>Ref</u>	<u>Description</u>	<u>Part No.</u>	<u>Ref</u>	<u>Description</u>	<u>Part No.</u>
1	Steam Generator w/ Burners, Nat	R10483	3	Tube Assy, Float	R8511
1	Steam Generator w/ Burners, LP	R10484	8	Gasket, Float to pump tube	R10252
	Steam Generator, Insulated - no burners	R10482	4	Burner Assy, Nat	R8928
	Insulation, Steam Generator	R8173	4	Burner Assy, LP	R8932
	Hose, Steam 1-1/8 ID, 1 foot	51999	6	Pilot Assy, Steam, Nat	R8939
	Hose, Steam Transfer 1-5/8 ID, 1 foot	R2814	6	Pilot Assy, Steam, LP	R8830
	Drain Pump	R2726		Orifice, Nat #58 Drill	R8930
	Drain Pump, 230V, 50 hz	R7563		Orifice, LP #71 Drill	R8933
	Tube, Flex 1/4" x 48"	R8949	5	Flue Assy	R8925
	Thermostat, Quench	R8015		Flue Assy, CE	R9529
	Strap, Quench Thermostat	R9339	7	Hose, Deliming, 3/8 ID sold in 5 ft sections	R11008
	Nozzle, Quench	R8198		Burner, Inshot	R4287
	Thermostat, High Limit F6	R2630		Fitting, Elbow 1/2 NPT x 1/2 comp.	15660
	Thermostat, Flush/Drain P11	R8012		Fitting, Elbow 3/8 x 3/8 comp	R8986
2	Float Switch Assy (top cover (has 2-1/8 NPT fittings and 1-3/8 dia. tube)	50283		Goretex Seal .25 w x .09 h, 1 foot	R8856
2	Float Switch Assy (top cover has 3-1/8 NPT fittings)	R10056		Goretex Seal .25 w x .187 h, 1 foot	R8423
	Floats (2)	50265			
	Float Gasket, 1 foot	R8420			
	Extension, Float Switch	50281			

INTERIOR OVEN COMPONENTS

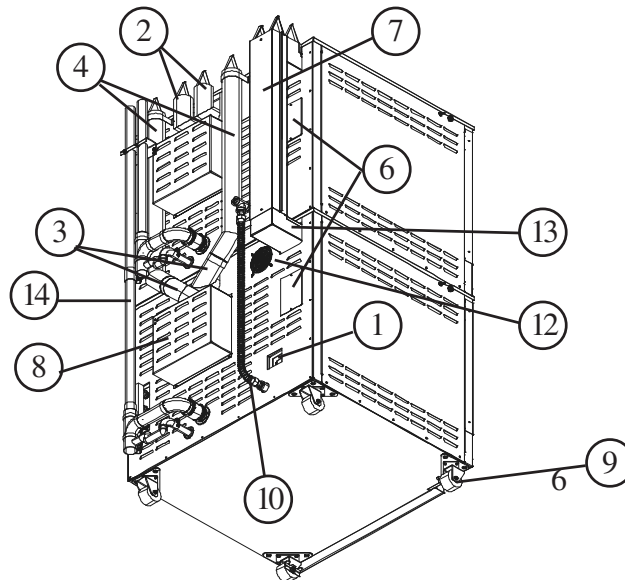


Ref Description

Part No.

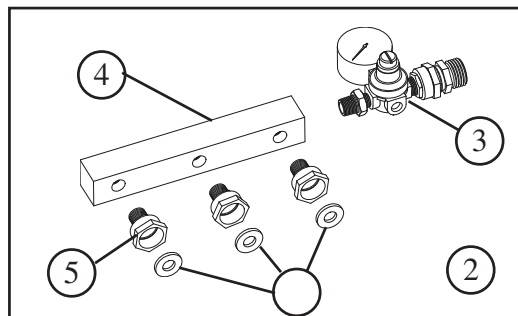
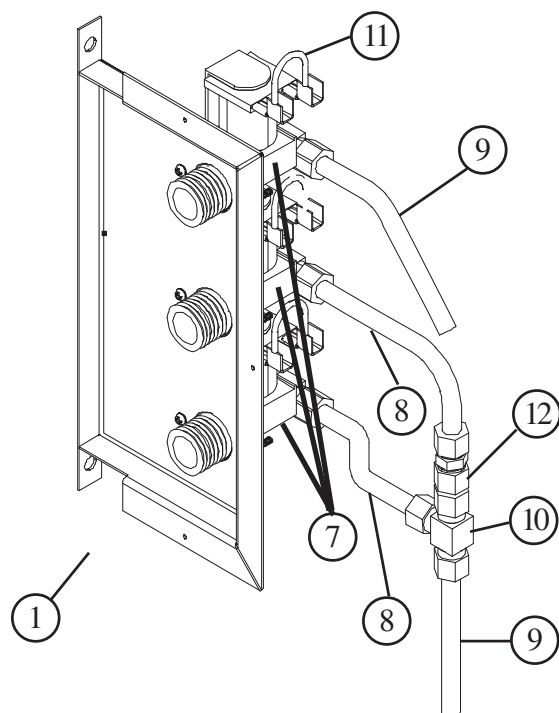
4	Motor, 115V/230V 1/2 hp	R5108
	Seal, motor shaft	R4244
	Goretex Seal, .25 w x .09 h, 1 foot	R8856
	Goretex Seal, .25 w x .187 h, 1 foot	R8423
	Motor Assy w/ Seal and Goretex	R4835
	Bracket, Motor Mount	R8154
	Retainer, Seal	R8955
	Plate, Ins. Cover	R8205
	1 Wheel, blower	R5081
	Baffle, air	R9270
1	Filter, grease	R3760
	Fan, axial	23034
	Rack guides	R4409
	6 Wire Shelf s/s	R3664
5	Rack, Chicken	52387
2	Heat Exchanger Assy, LH	R8835
3	Heat Exchanger Assy, RH	R8836
	Heat Exchanger Retro Kit	R10654
	Water Regulator	R11218
	Cooking Compartment High Limit	36441
	Washer, Goretex 1/4 x 5/8	R9648

EXTERIOR COMPONENTS



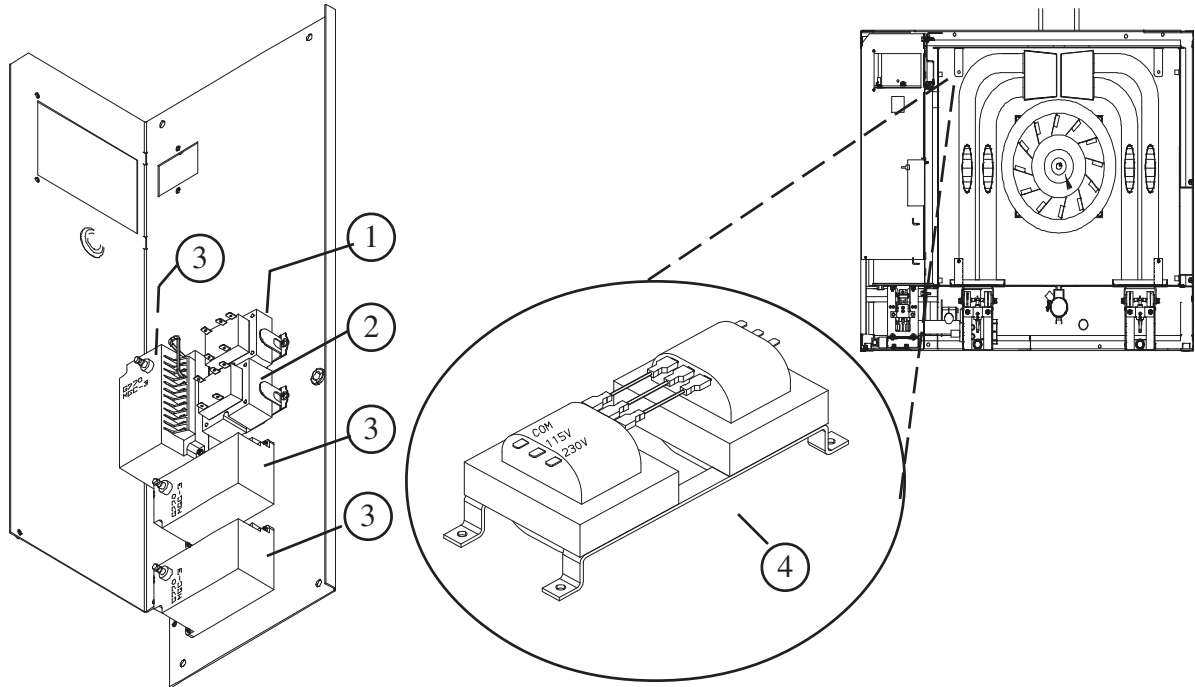
<u>Ref</u>	<u>Description</u>	<u>Part No.</u>	<u>Ref</u>	<u>Description</u>	<u>Part No.</u>
1	Module, Power Upgrade	R10997	2	Flue Outlet, Top/sgl section	R8989
	Power Cord, 115V	R10645	3	Flue Outlet, Bottom/dbl sec.	R8990
	Power Cord, 220V	R8771	8	Cover, Motor ALCT	R9365
	Hose, Silicone	R2202	8	Cover, Motor SS	R9366
14	Vent Extension Assy Bottom	R10785	9	Caster Kit, low profile	R6308
	Hose, Flex Drain, 12"	R9308	10	Kit, Stacking Gas Manifold	R9570
	Clamp, Hose 7/8" to 2"	R220		Body Back, ALCT	R10577
	Support Bracket	R10553		Body Back, SS	R10576
4	Exhaust tube, stacked unit LH	R9238	12	Guard, Axial Fan	22718
4	Exhaust tube, stacked unit RH	R9237		Axial Fan	23034
7	Flue Assy, Steam Generator	R9492	14	Module power inlet for pump	R9230
6	Panel, Float switch ALCT	R9574		Fuses for pump	R10422
6	Panel, Float switch SS	R9575		Fuse, 5 amp	R5755
13	Flue Ext Assy, bottom	R8805		Fuse, 10amp, CE	R9267

PLUMBING COMPONENTS



<u>Ref</u>	<u>Description</u>	<u>Part No</u>
1	Solenoid Assy, complete	R8993
2	Manifold Assy, complete	R9579
3	Pressure Regulator Assy	R11218
4	Manifold, Inlet Water	R9578
5	Fitting, 1/4 NPT to GHT	R9580
	Fitting, 3/8 NPT to GHT	R9581
6	Washer, Garden Hose	R7750
	Hot Water Conversion 14G	R9603
7	Solenoid Valve Assy (3)	R8846
8	Tube, 3/8 X 6" s/s flex	R8952
9	Tube, 3/8 x 36" ss flex	R6330
10	Fitting, Compression 3/8 tee	R8985
	Fitting, Compression 3/8 straight	R8984
11	Supressor, Assy Arc	R7910
12	Reducer, slow fill	R9324
	Terminal, Piggyback	15937
	Fitting, 3/4 Garden Hose, Male Tread	R7978

TRANSFORMERS



<u>Ref</u>	<u>Description</u>	<u>Part No.</u>
1	Transformer 208/24 40VA	52948
2	Transformer, 208/24 50VA	R8763
3	Control, Ignition G770 MGC	20348
4	Autotransformer, 1KVA 240-115	R9213
	Harness, Transformer, 115V	R9263
	Control, Ignition Honeywell	53009

AUTODELIMING KITS

Description

Part No.

FOR A COMPLETE KIT INCLUDING PUMP:

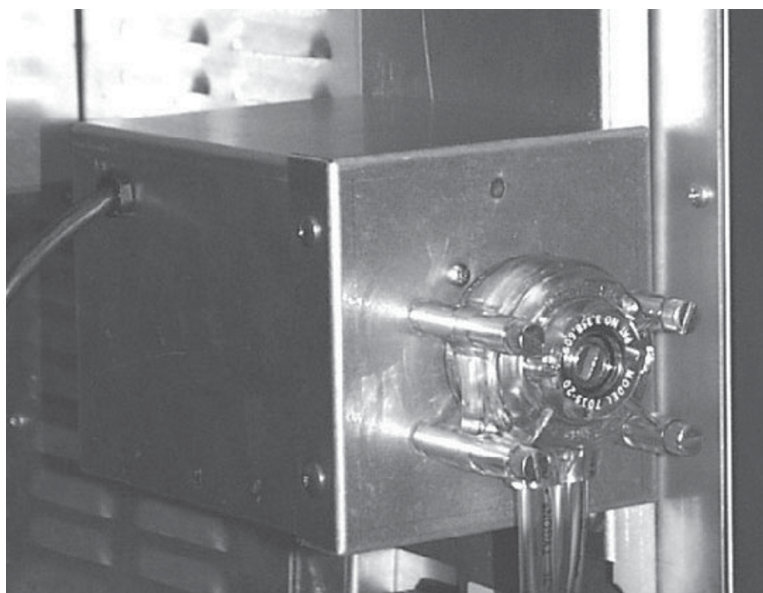
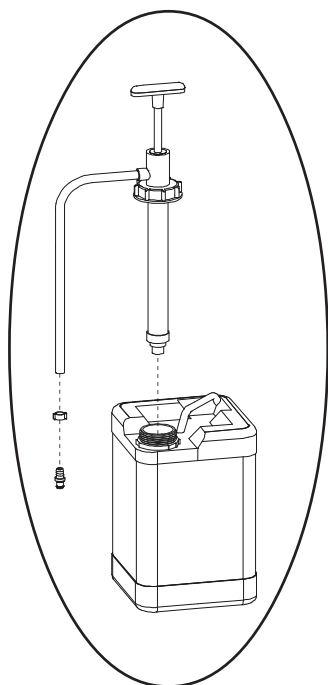
Single/ Bottom, aluminized
Top section of double, aluminized
Single/Bottom, stainless steel
Top section double, stainless steel
Fuse, 5 X 20MM Time Lag, High

R10796
R10798
R10797
R10799
R10422

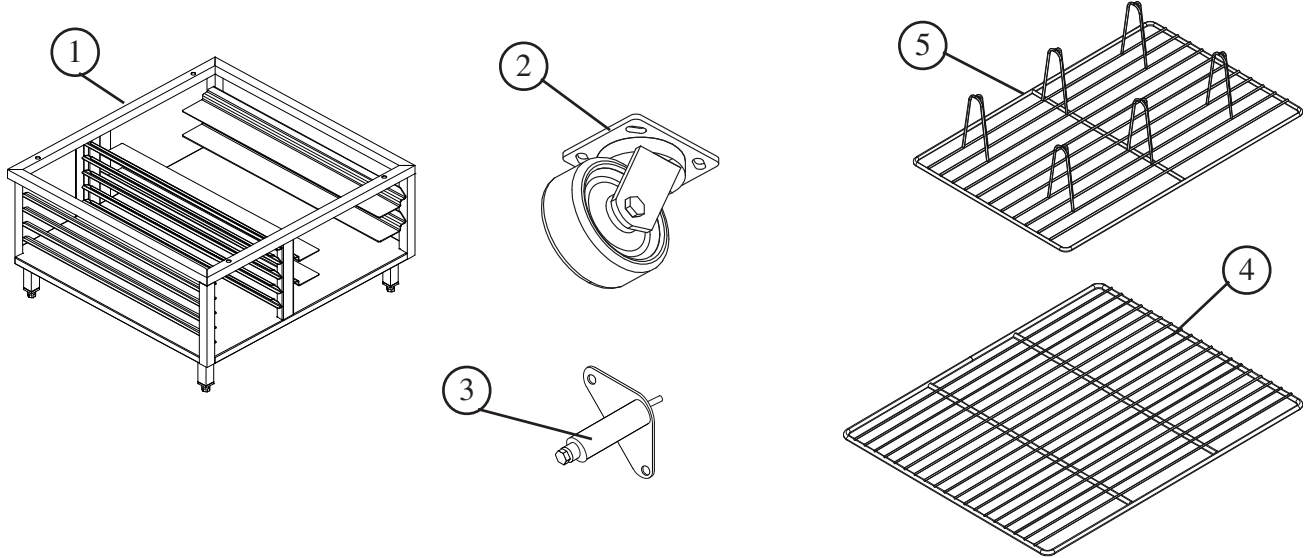
FOR A KIT TO HANG AN EXISTING PUMP:

Single, aluminized
Double Stack, aluminized
Single, stainless steel
Double Stack, stainless steel
Fuse, 5 X 20MM Time Lag, High

R10786
R10788
R10787
R10789
R10422



ACCESSORIES



Ref Description

Part No.

1	Stand, 22"	R5453
	Casters, for Stand	R5454
	Legs, 25"	R2899
3	Legs, 6" w/bolts S/S	8600
	Legs, 4"	R3109
	Legs, bolt down/seismic for stands	R5456
	Caster Kit, set of 4, low profile	R6308
	Casters, for 25" legs	16002
2	Casters, set of 4, mounts to bottom of unit	R3112
6	Pressure Spray Bottle	R10955
	Repair Kit, Spray Bottle	R6332
4	Rack, Wire	R3664
5	Rack, Chicken Holder	52387
	Rack, French Fry	D0246
	Hose and Spray Assy, 10Ft	R10899
7	Deliming Bottle (w/ garden hose conn.)	R8859
7	Deliming Bottle (w/ male hose barbed fitting)	R10559
	Kit, Stacking Gas Manifold	R9570
	Water Filter Kit BWG-12K	38073
	Water Filter Kit BWG-7K	38074
	Kit, Filter Accessory Single	38090
	Kit, Filter Accessory Double	38138
	Side Shield Kit, w/hardware	R9611

*NOTE: Cartridges must be ordered from
Selecto ONLY-1-800-275-6392.*

