

SPL052007-PF-BD
May 20, 2007
Replaces SPL081505-PF-BD
August 15, 2005



Code # S1820EODD4C0-208V
5C0-240V
6C0-380V
7C0-480V

S1820E CONVEYOR OVEN REPLACEMENT PARTS MANUAL (with WIRING DIAGRAMS)

Models with adjustable conveyor
belt feature are serial number
477611006 & after (Oct. 2006)

Serial Tag Location



EFFECTIVE with SERIAL #351410405 and AFTER

Serial # Code
First 4 digits- order of production
Fifth digit-model specific
Sixth and Seventh digit- month of production
Eighth and Ninth digit- year of production

Table of Contents: Page 2

BLODGETT CONVEYOR OVEN, 1400 Toastmaster Drive, Elgin, IL 60120
Telephone: 847-741-3300 Fax Number: 847-741-4406

www.blodgett.com

email: techsupport@middleby.com

Table of Contents

Spec Sheet	3
Oven and Electrical Specifications	5
Installation Kit	6
Key Parts	7
Front View of Oven	8
Parts for Front View of Oven	9
Right-hand View of Electrical Compartment	10
Parts for Right-hand View of Electrical Compartment	11
Rear-view of Blower Compartment	12
Parts for Rear-view of Blower Compartment	13
View of Left-hand Electrical Compartment	14
Parts for Left-hand Electrical Compartment	15
View of Conveyor Parts	16
Parts for Conveyor	17
View of Cart Parts	18
Parts for Oven Cart	19
Wiring Diagrams (Electrical Schematics)	
208/240 volt single phase domestic USA 3 thermocouples-48713 J	20
380/480 volt single phase domestic USA 3 thermocouples-52445 J	21
230/240 volt single phase CE 3 thermocouples-52446 K	22
380/400 volt single phase CE 3 thermocouples-54661J	23
380/400 volt three phase CE HighLeg 3 thermocouples-58158 F	24
208/240 volt three phase domestic USA HighLeg 3 thermocouples-58227 C	25
Standard Air Finger Configuration (Old style September 2005 and before)	26
Standard Air Finger Configuration (New style October 2005 and after)	27



S1820

MODEL S1820 Electric Conveyor Oven



Project _____
Item No. _____
Quantity _____

Blodgett conveyor oven with 18" (457mm) wide belt and 20" (508mm) baking zone length. Single, double or triple stack models are available.

EXTERIOR CONSTRUCTION

- Stainless steel front, top and sides

INTERIOR CONSTRUCTION

- Stainless steel air flow plate on top and bottom
- 18" (457mm) stainless steel wire mesh conveyor belt
- Two single inlet blowers behind the heat source for air circulation, supplying top and bottom air flow

OPERATION

- Heat transferred through forced directed hot air impingement
- Open vented baking compartment
- Watlow Firebar® resistance heating element
- Solid state digital controls to display set point and actual temperature as well as belt speed
- Two blower motors with thermal overload protectors
- One blower area cooling fan
- 1-10 minute bake time

STANDARD FEATURES

- Solid state controls
- 4" (102mm) legs
- One 6" (152mm) and one 12" (305mm) extension tray
- Field reversible belt direction
- Removable belt assembly
- NEMA #650 6' cord & plug for 208V and 240V (cord for 380V & 480V not provided)
- One year parts & labor warranty*

OPTIONS AND ACCESSORIES

(AT ADDITIONAL CHARGE)

Stands

- Stand w/casters for single or double stack
- Stand w/casters for triple stack
- One year additional extended warranty*



* For all international markets, contact your local distributor.

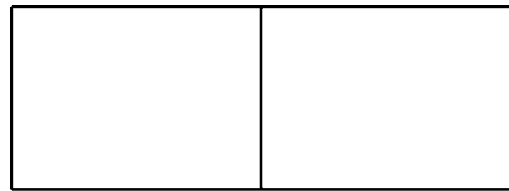
BLODGETT CONVEYOR OVEN

www.blodgett.com

1400 Toastmaster Drive, Elgin, IL 60120 • Phone: 847-741-3300 • Fax Number 847-741-4406

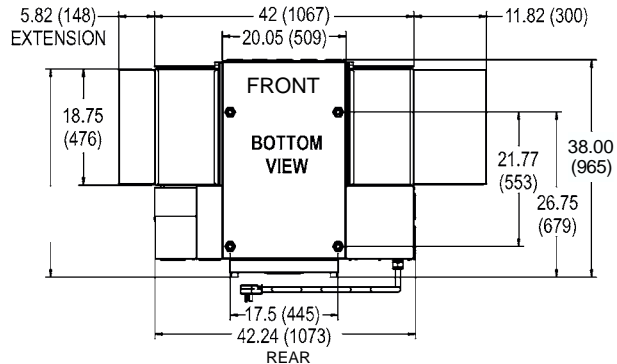
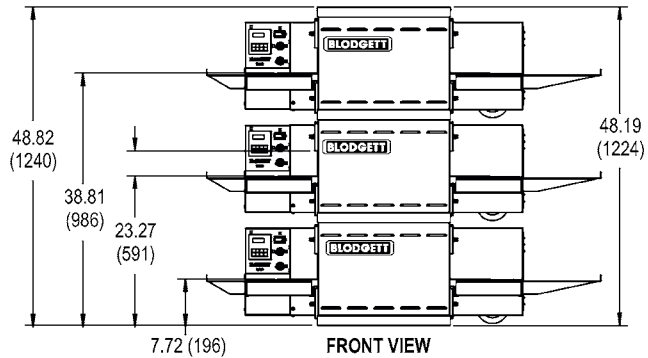
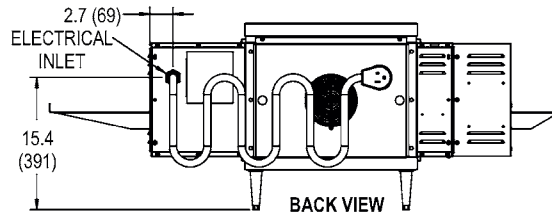
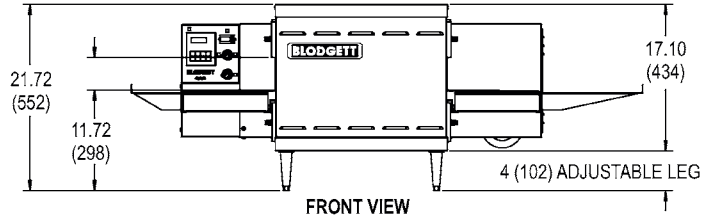
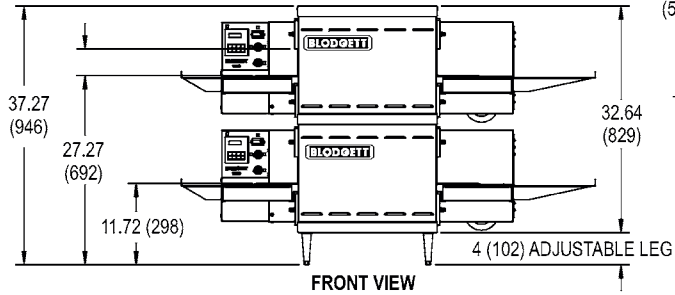


MODEL S1820



APPROVAL/STAMP

DIMENSIONS ARE IN INCHES (MM)



SHORT FORM SPECIFICATIONS

Provide Blodgett model S1820 conveyor oven. Unit shall be electrically heated and shall cook by means of forced, heated air. Unit shall be (single/double/triple) deck supported by (specify stand type from options list). Each deck shall be fully independent, of stainless steel construction, and fully insulated on all sides. Provide with electrically heated baking compartment with two blowers to evenly distribute heat across baking zone. Conveyor belt shall be 18" (457mm) wide and constructed of stainless steel wire mesh; baking zone length shall be 20" (510mm). Side mounted control panel shall be solid state with 550°F (288°C) maximum thermostat and digital display of adjustable belt speed. Provide options and accessories as indicated.

BLODGETT CONVEYOR OVEN

www.blodgett.com

1400 Toastmaster Drive, Elgin, IL 60120 • Phone: 847-741-3300 • Fax Number 847-741-4406

NOTE: FOR COMMERCIAL USE ONLY

Printed in U.S.A.

P/N M10989 Rev C (8/05)

S1820 OVEN SPECIFICATIONS

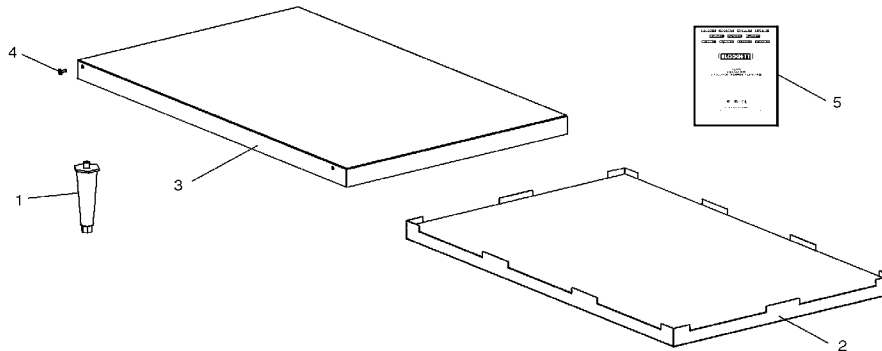
Conveyor Belt Width	18.00" (457mm)
Heating Zone Length	20.00" (5098mm)
Baking Area Square Feet	2.5 sq. ft. (0.23 sq. m.)
Overall Dimension Standard Single Oven w/Legs	42.00" (1067mm) L x 38.00" (965mm) W x 21.72" (552mm) H x
Overall Dimension Double Oven	42.00" (1067mm) L x 38.00" (965mm) W x 37.27" (947mm) H x
Overall Dimension Triple Oven	42.00" (1067mm) L x 38.00" (965mm) W x 52.82" (1342mm) H x
Weight of Single Oven	250 lb (93.3kg)
Shipping Weight	325 lb (121.3kg)
Shipping Cube	22.1 ft ³ (0.62 m ³)
Operating Range	8.3 kW/hr
Maximum Operating Temperature	550°F (287°C)
Warm-up Time	20 min.
Bake Time Range	1-10 minutes

S1820 ELECTRICAL SPECIFICATIONS

Main Blower & Elements Voltage	Control Circuit Voltage	Phase	Frequency	Amperage Draw	Poles	Wires
208-240V	208-240V	1 Ph	50/60 Hz	39.9 Amp	2 Pole	3 Wire (2 hot, 1 grd)
HEATER AMPERAGE						
Voltage kW Amp						
208 8.3 39.9						
230 7.6 33.0						
240 8.3 34.6						
380V Export	208-240V	1 Ph	50/60 Hz	21.8 Amp	3 Pole	4 Wire (2 hot, 1neut, 1 grd)
HEATER AMPERAGE						
Voltage kW Amp						
380 8.3 21.8						
400 9.2 23.0						
480V	208-240V	1 Ph	50/60 Hz	17.3 Amp	3 Pole	4 Wire (2 hot, 1neut, 1 grd)
HEATER AMPERAGE						
Voltage kW Amp						
480 8.3 17.3						

**PARTS LIST FOR 1820S ELECTRIC OVEN
INSTALLATION KIT
Single and Double Stack Ovens
P/N 48397**

ITEM NO.	QTY	PART NO.	DESCRIPTION
1	4	3101908	LEG 4" AD FT
2	1	48395	BOTTOM TRAY w/INSULATION
3	1	48396	TOP COVER
4	4	51387	SCREW MSSLT THREAD 8-32 x 1/2, 18-8
5	1	55310	OWNER'S OPERATING & INSTALLATION MANUAL



**PARTS LIST FOR S1820 ELECTRIC OVEN
INSTALLATION KIT
Triple Stack Oven
P/N 54593**

ITEM NO.	QTY	PART NO.	DESCRIPTION
1	1	48395	BOTTOM TRAY w/INSULATION
2	1	48396	TOP COVER
3	4	51387	SCREW MSSLT THREAD 8-32 x 1/2, 18-8
4	4	M3828	PIN, ALIGNMENT
5	1	55310	OWNER'S OPERATING & INSTALLATION MANUAL

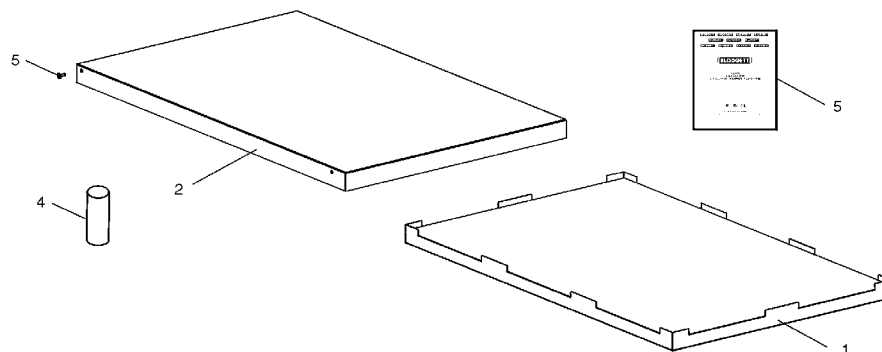


Figure 1. S1820 Electric Oven Installation Parts

KEY SPARE PARTS KIT

An oven can be purchased with a Key Spare Parts Kit (Figure 2). (The kit can be purchased when the oven is ordered, or later, from a Blodgett Authorized Parts Distributor). The kit contains many of the crucial parts that

can reduce serious downtime and loss of production, if a failure occurs.

Replacement parts for this kit can be purchased from your Blodgett Authorized Parts Distributor.

S1820 ELECTRIC OVEN KEY SPARE PARTS KIT (Figure 2)

ITEM	PART NO.	ENGLISH DESCRIPTION	QUANTITY
1	47321	Kit, Temperature Control	1
2	51402	Relay, 100A	1
3	58390	Conveyor Drive Motor Kit	1
4	58323	Conveyor Speed Control	1
5	33812-5	Thermocouple(s)* (3 used)	1
6	50715	Heater Element, 208V	1
6	51017	Heater Element, 240V	1
6	51958	Heater Element, 380V	1
6	51961	Heater Element, 480V	1
7	57408	Contactactor-65 amp 3 pole	1

* The proper location for the thermocouple is as follows: 1) A temperature sensing thermocouple is located on the entrance end and exit end of the unit on the bottom, 2) High limit is located on the exit end of the unit on the top as standard (on a left to right direction), 3) High limit on the S1820 is 550 degree's.

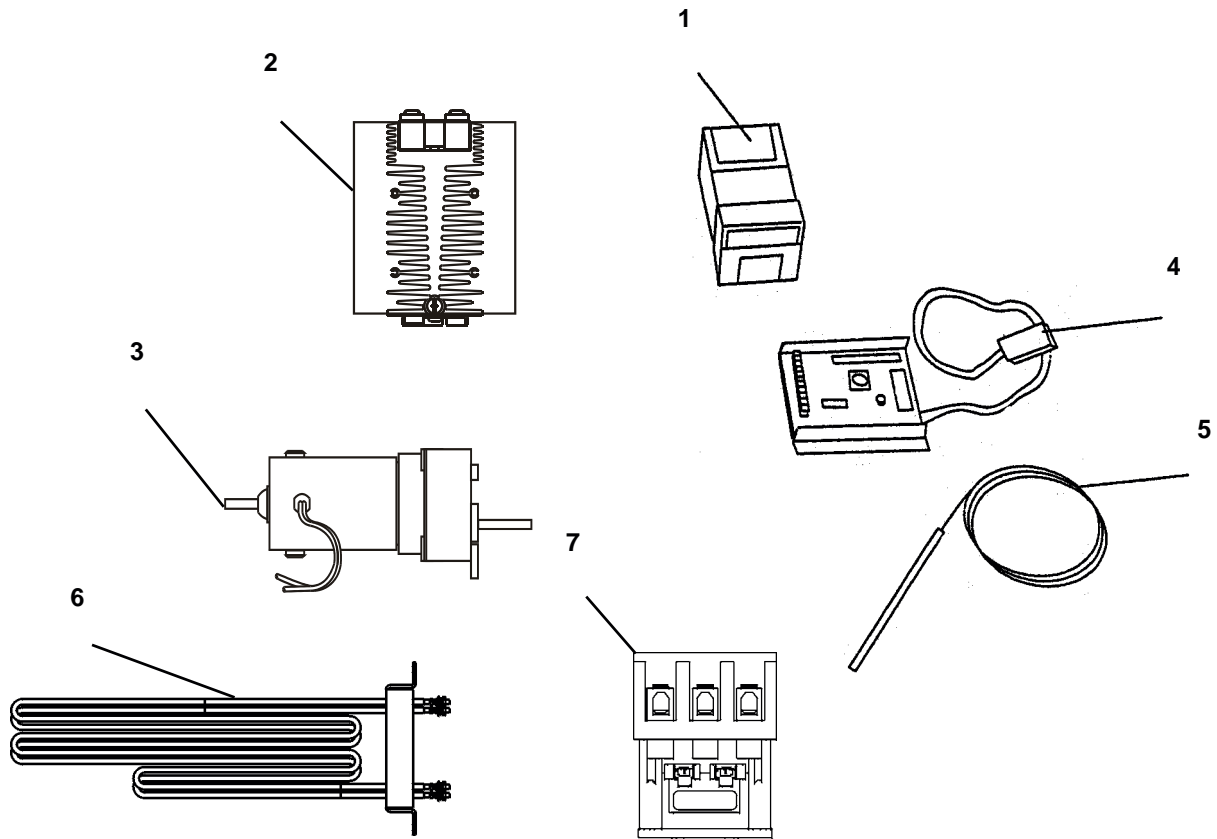
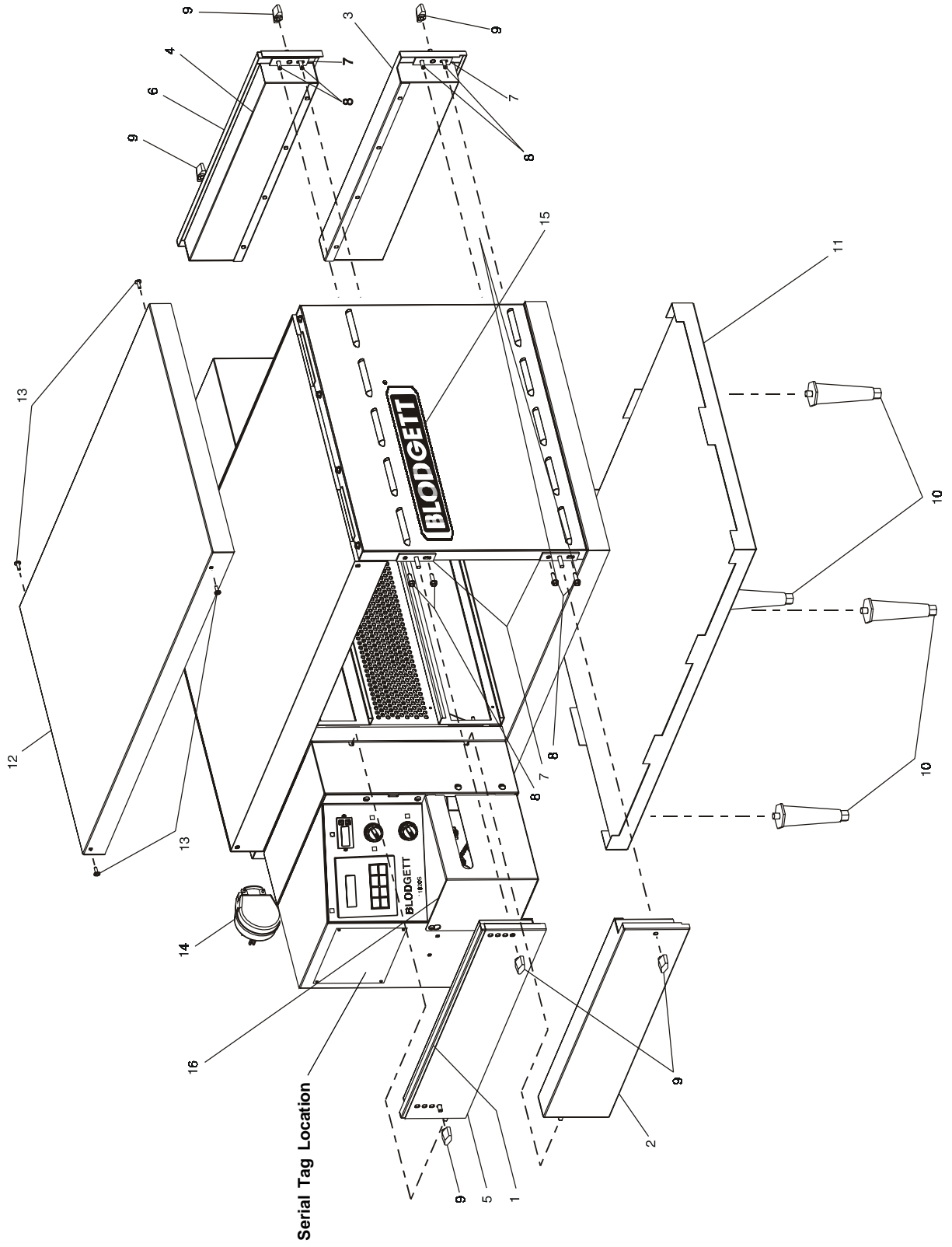


Figure 2.

Front View of Oven

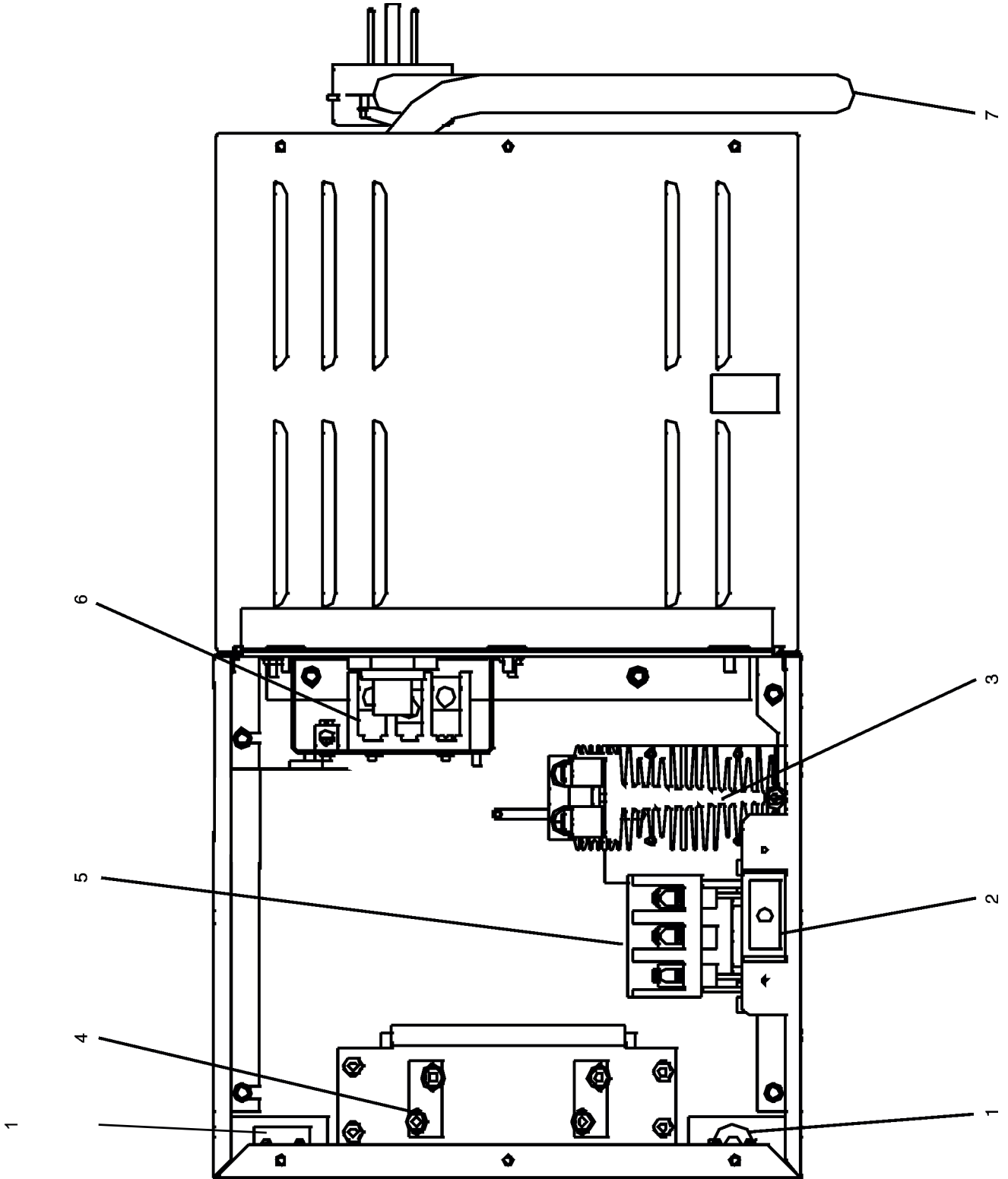


Parts for Front View of Oven

ITEM	QTY	PARTNO.	DESCRIPTION
1	1	48382	UPPER LH END PLUG ASSEMBLY, INCLUDES PART # 48378, ITEM 5
2	1	48387	LOWER LH END PLUG ASSEMBLY
3	1	48408	LOWER RH END PLUG ASSEMBLY
4	1	48412	UPPER RH END PLUG ASSEMBLY, INCLUDES PART # 48410, ITEM 6
5	1	48378	EYEBROW, UPPER LH END PLUG ASSEMBLY
6	1	48410	EYEBROW, UPPER RH END PLUG ASSEMBLY
7	4	51398	END PLUG MOUNTING BRACKET ASSEMBLY .875
8	8	21296-0005	SCREW, HEX HEAD, WSHHD 12-14X3/4 SS BSD
9	6	36452	NUT, WING-PLASTIC 1/4-20
10	4	3101908	LEG, 4" ADJ FT (NPS)
11	1	48395	BOTTOMTRAY ASSEMBLY
12	1	48396	COVER, TOP
13	4	51387	SCR, MS, SLT TRHD 8-32X1/2 18-8
14	1	M10434	CORDSET, 50 AMP 250V 2P 3W (6-50P) 72" LONG
15	1	57399	NAMEPLATE, BLODGETT SM
16	1	52256	COVER, CHAIN

NOTE: AIR SWITCH WAS REMOVED IN PRODUCTION AFTER MARCH 2006

Right-hand View of Electrical Compartment

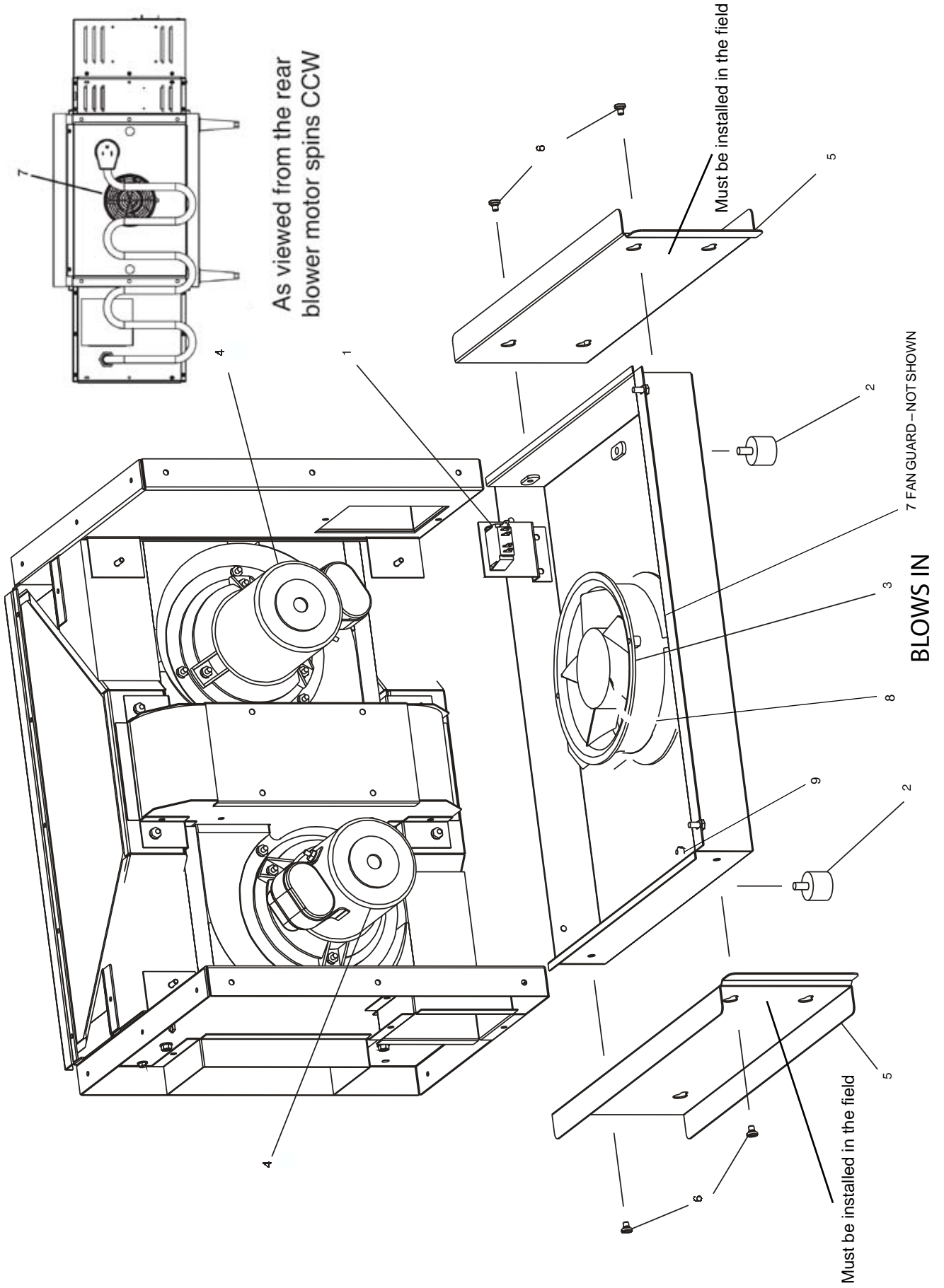


NOTE: AIR SWITCH WAS REMOVED IN PRODUCTION AFTER MARCH 2006

Parts for Right-hand View of Electrical Compartment

ITEM	QTY	PARTNO.	DESCRIPTION
1	1 or 2	33812-5	THERMOCOUPLE, TYPE "J", SHIELDED 2.50X120"
2	1	28021-0047	SWITCH, INTERLOCK, 10A, NO2P
3	1	51402	RELAY, HEATSINK 480VAC 100A
4	1	50715	ELEMENT, HEATING, 208V
4	1	51017	ELEMENT, HEATING 240V
4	1	51958	ELEMENT, HEATING 380V
4	1	51961	ELEMENT, HEATING, 480V
5	1	57408	CONTACTOR, 208/240V, 65A, 50/60 Hz
6	1	300-3946	BLOCK, POWER DIST 3POLES
7	1	M10434	CORDSET, 50 AMP, 250V, 2P 3W (6-50P) 72" LONG
8	1	45244	RFI-FILTER-CE ONLY

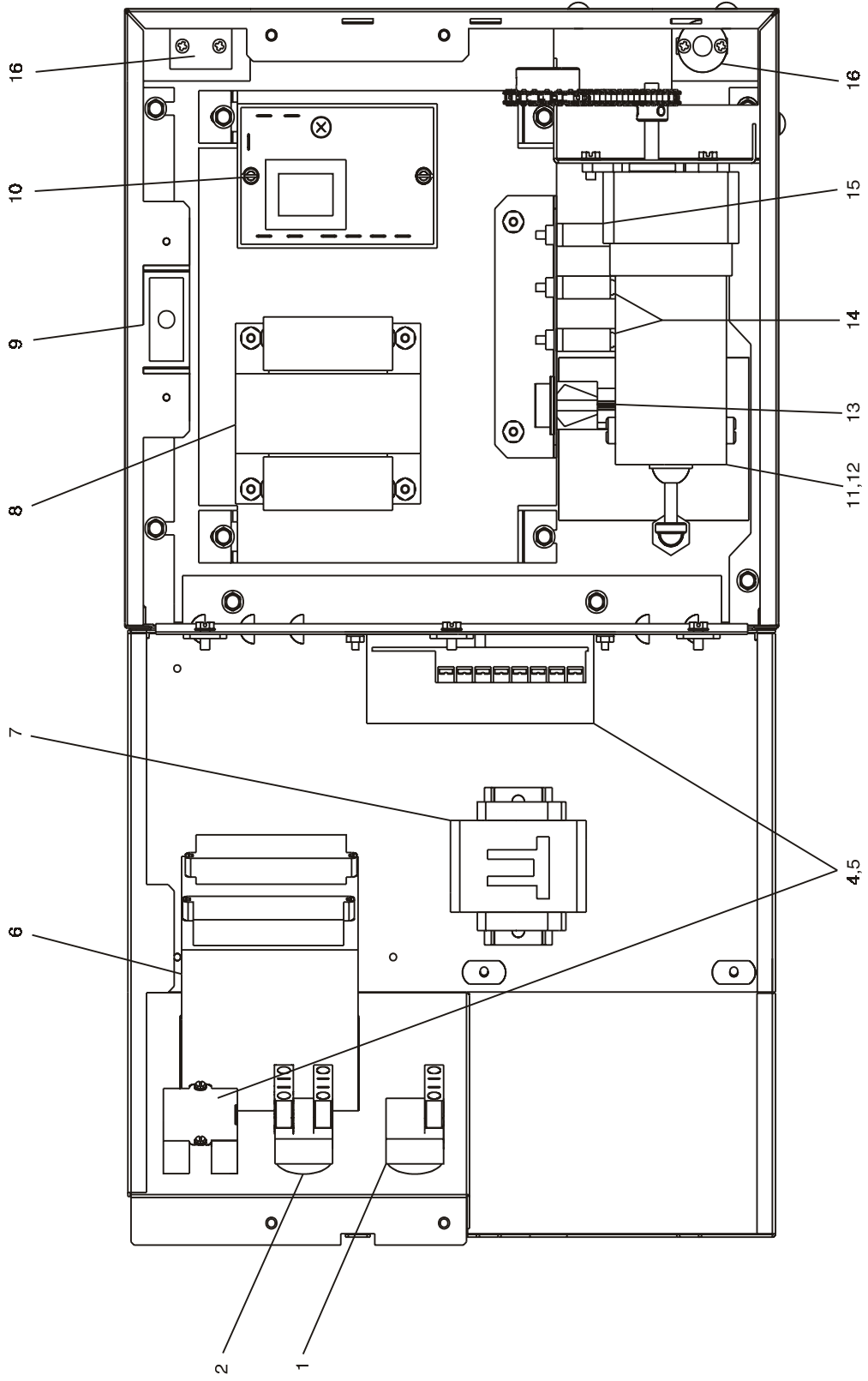
Rear-view of Blower Compartment – As viewed from Rear – Blower Motor Spins CCW



Parts for Rear-view of Blower Compartment

ITEM	QTY	PARTNO.	DESCRIPTION
1	1	28021-0061	SWITCH, MOMENTARY-10A, NO 2 POLE
2	2	30927	BUMPER, WINDOW
3	1	51399	FAN, COOLING, 230V AC, 295 CFM (BLOWS IN)
4	2	52244	MOTOR, BLOWER, CW, 208/230 50/60HZ
5	2	57258	PLATE, AIR VENT
6	4	7007413	SCR, SHOULDER 10-32X, 34 18-8
7	1	31497	GUARD, COOLING FAN

View of Left-hand Electrical Compartment

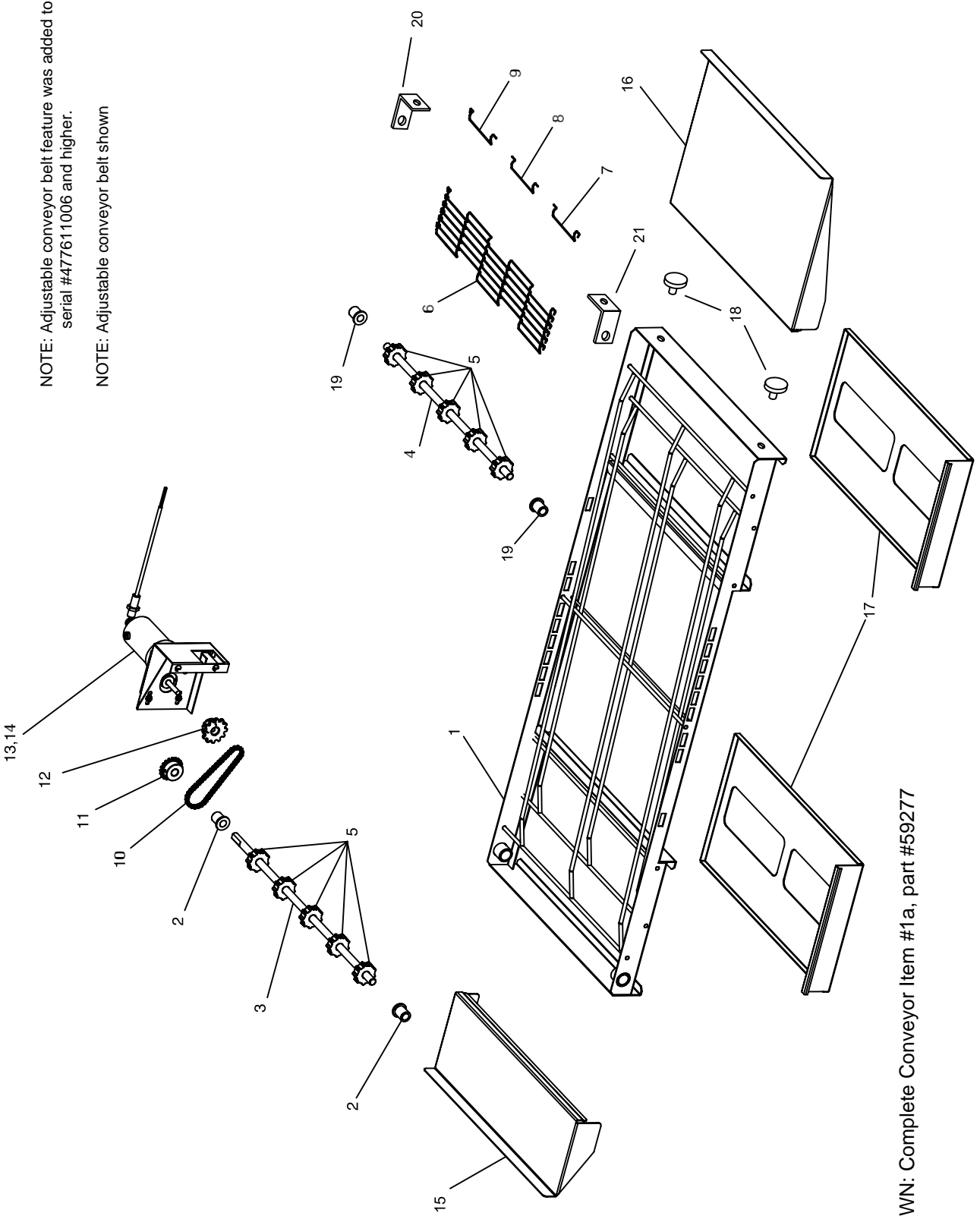


Parts for Left-hand Electrical Compartment

ITEM	QTY	PARTNO.	DESCRIPTION
1	1	46521	KIT-SWITCH (CONVEYOR) CONTAINS (1) 44697 & (1) 44696)
2	1	46522	KIT-SWITCH (BLOWER/HEAT) CONTAINS (2) 44697 & (1) 44696)
3	2	44696	SELECTOR SWITCH
4	1	58323	CONVEYOR SPEED CONTROL W/DIGITAL SPEED DISPLAY
5	1	37503	DIGITAL SPEED CONTROL (DISPLAY ONLY)
6	1	47321	CONTROL, COMBO (58504)
7	1	28041-0011	CONTACTOR, 208/240V
8	1	31504	TRANSFORMER, 230V(P)/120V(S), 200VA
9	1	28021-0047	SWITCH, INTLCK, 10A, NO2P
10	1	33983	CONTROL, ELECTRIC, HI-LIMIT, 240V
11	1	58390	MOTOR, CONVEYOR DRIVE
11a	1	39002	MAGNET 2-POLE
11b	1	310-0017	ADHESIVE
11d	1	58484	KIT, 2 BRUSHES & 2 CAPS
12	1	38185	KIT, CONVEYOR PICK-UP
13	1	35145	SWITCH, PUSHBUTTON, MOLVENO, 250V
14	2	45036	BREAKER, CIRCUIT 240V, 3A
15	1	48635	BREAKER, CIRCUIT 240V, 0.3A
16	1 or 2	33812-5	THERMOCOUPLE, TYPE "J", SHIELDED, 2.50X120"

S1820E-SERIES PARTS MANUAL

View of Conveyor Parts



NOTE: Adjustable conveyor belt feature was added to serial #477611006 and higher.

NOTE: Adjustable conveyor belt shown

NOT SHOWN: Complete Conveyor Item #1a, part #59277

S1820E-SERIES PARTS MANUAL

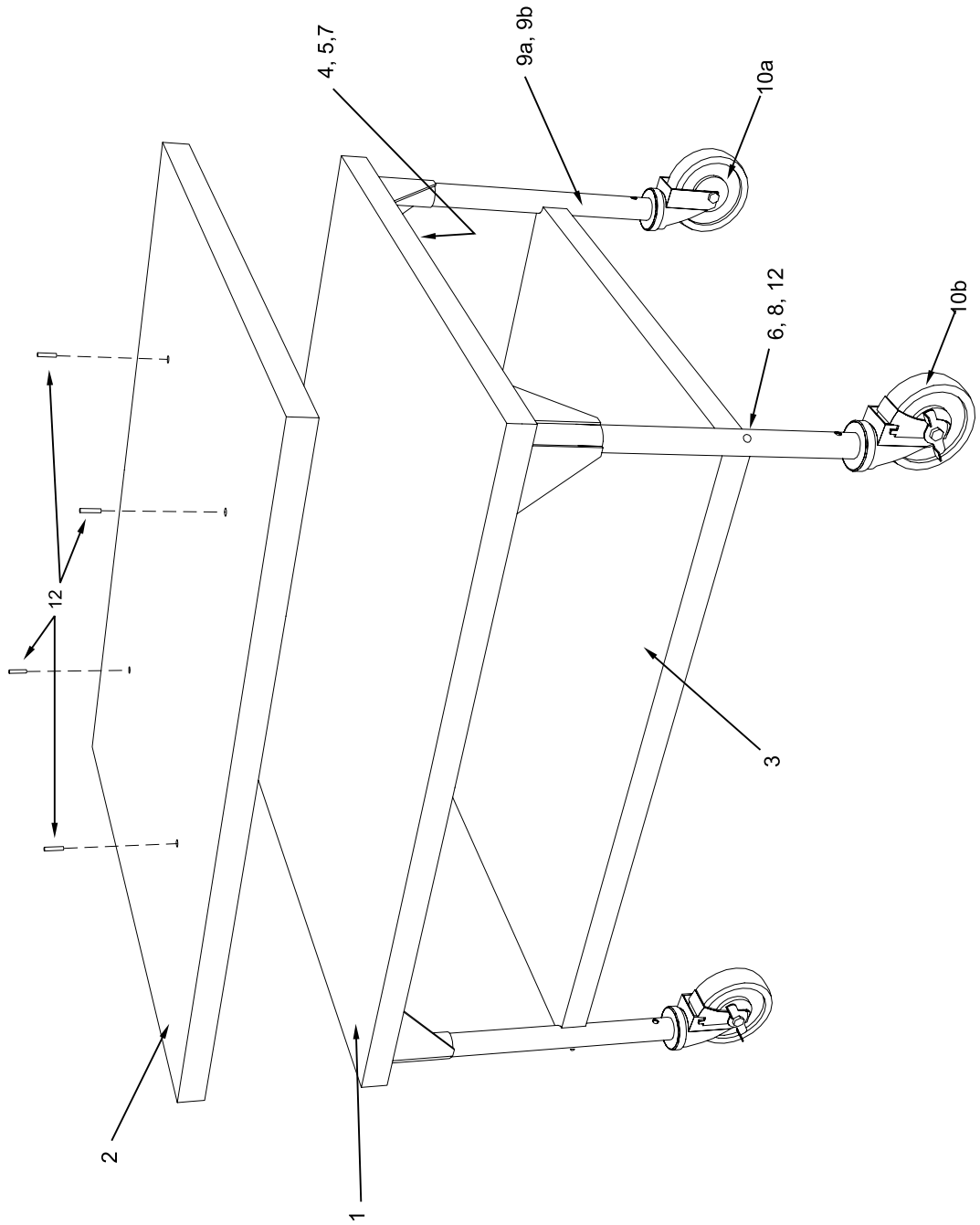
Parts For Conveyor

ITEM	QTY	PART NO.	DESCRIPTION
1a	1	59277	Complete Conveyor Assembly - w/Adjustment Feature *
1b	1	59275	Frame Only - Conveyor - Weldment
1c	1	48471	Frame Conveyor (no adjustment)
2	2	M4817	Bearing, Rulon
3	1	M4815	Shaft, Drive
4a	1	59271	Shaft, Idler 18-1/4" *
4b	1	51408	Shaft, Idler 18-3/4"
5	10	M4818	Sprocket, Wire Belt
6a	1	59307	Belt, Wire, Stainless Steel, 18"x87-1/2" *
6b	1	M7471	Belt, Wire Stainless Steel
7	1	58391	Kit, Master Link Front, Middle, Rear
10	1	55567	Assy, Chain High Speed w/Master Link
10a	1	310-1212	Master Link Only
11	1	55217	Sprocket, chain #25-20T-1/2" Conveyor Shaft 25T
12	1	45349	Sprocket, 25B25 w/5/16" Bore - Drive Shaft
13	1	58390	Motor, Conveyor Drive w/2 Pole Magnet
13a	1	39002	Magnet 2-Pole
13b	1	310-0017	Adhesive
13d	1	58484	Kit, 2 Brushes & 2 Caps
14	1	38185	Sensor-Conveyor Pick-up
15A	1	59280	Extension, Conveyor - 6" *
15B	1	51297	Extension, Conveyor - 6"
16A	1	59272	Extension, Conveyor - 12" *
16B	1	51296	Extension, Conveyor - 12"
17A	2	51409	Pan, Crumb Vented - Shipped As Standard
18	2	59276	Screw Adjustment *
19	2	59264	Bushing, Rulon - Idler *
20	1	59267	Idler Guide - Back *
21	1	59270	Idler Guide - Front *

*NOTE: ITEMS 1A, 4A, 6A, 15A, 16A, 18-21 used on models with serial #477611006 and higher

S1820E-SERIES PARTS MANUAL

View of Cart Parts



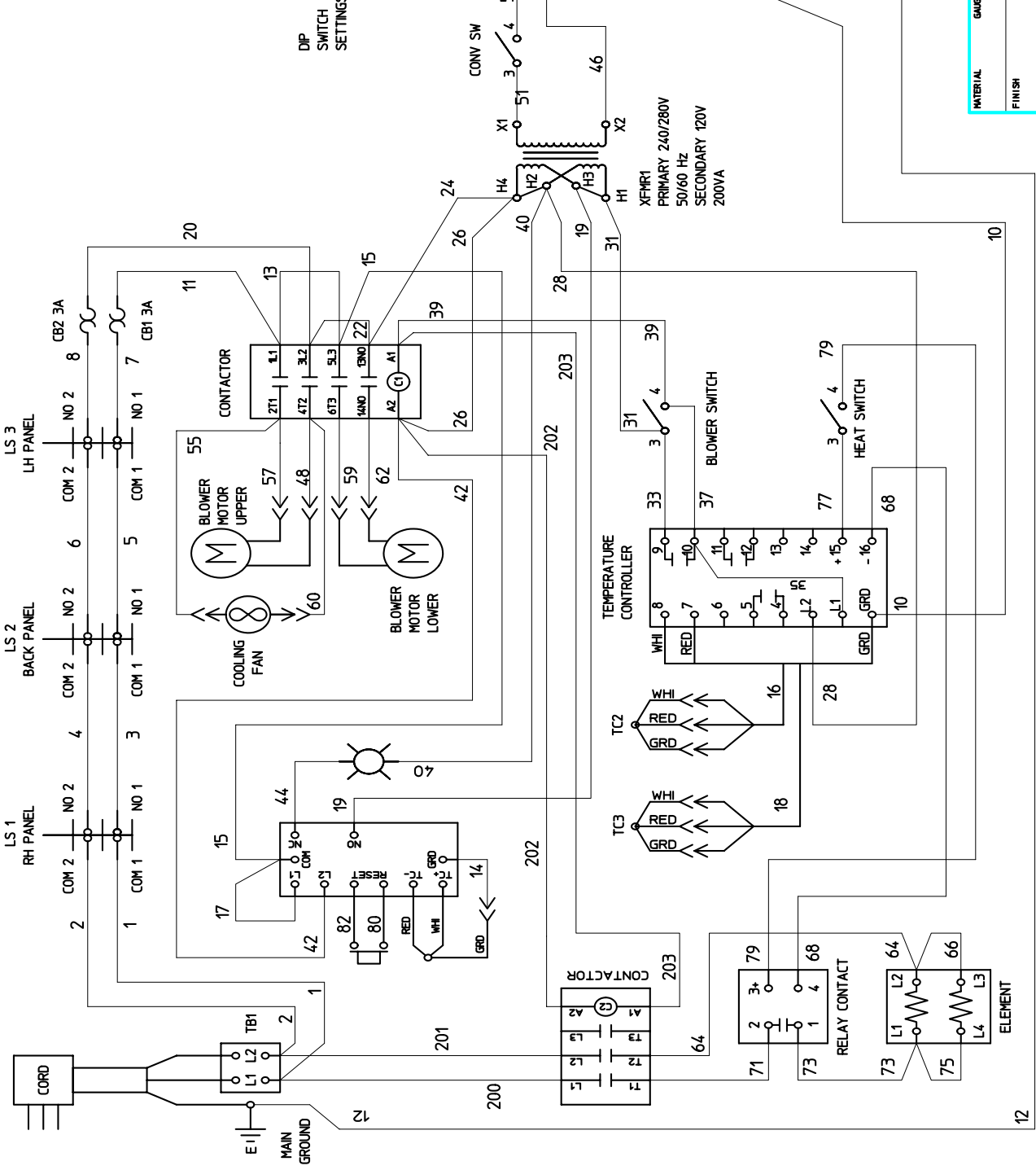
S1820E-SERIES PARTS MANUAL

Parts For Oven Cart

#52241 #54596
 Single/Double Triple

ITEM	QTY	PART NO.	DESCRIPTION
1	1	52237	Wldmt, Base Cart Panel
2	1	52238	Panel, Cover Cart
3	2	52240	Wldmt, Lower Shelf Cart Panel
4	16	A3682	Washer, Lock 5/16"
5	16	B10012	Nut, Hex 5/16"-18 ZP
6	4	F706A8805	Washer, Flat Rivet Burr 1/4" NP
7	16	M0226	Washer, Flat 5/16"
8	4	M10435	Scr, MS PH PANHD 1/4"-20 x 2-14"
9a	4	M2585	Leg 18" Single and Double
9b	0	54657	Leg 5" - Triple Only
10a	2	15688	Caster w/o Brake
10b	2	15687	Caster w/Brake
11	4	M3828	Pin - Alignment
12	4	M7958	Nut, Nylon Insert 1/4-20

REV	DATE	ECN	REVISION DESCRIPTION	BY	CHK	DATE
G	02/01/2006	005052	ADDED AIR SWITCH	PC	MS	02/22/2006
H	04/01/2006	005207	ADDED TC3 LEAD 18.	GM	MS	04/15/2006
J	02/01/2006	005928	REMOVED AIR SWITCH AND LEAD 210.	GM	MS	02/08/2006



SEE LABEL P/N 54664

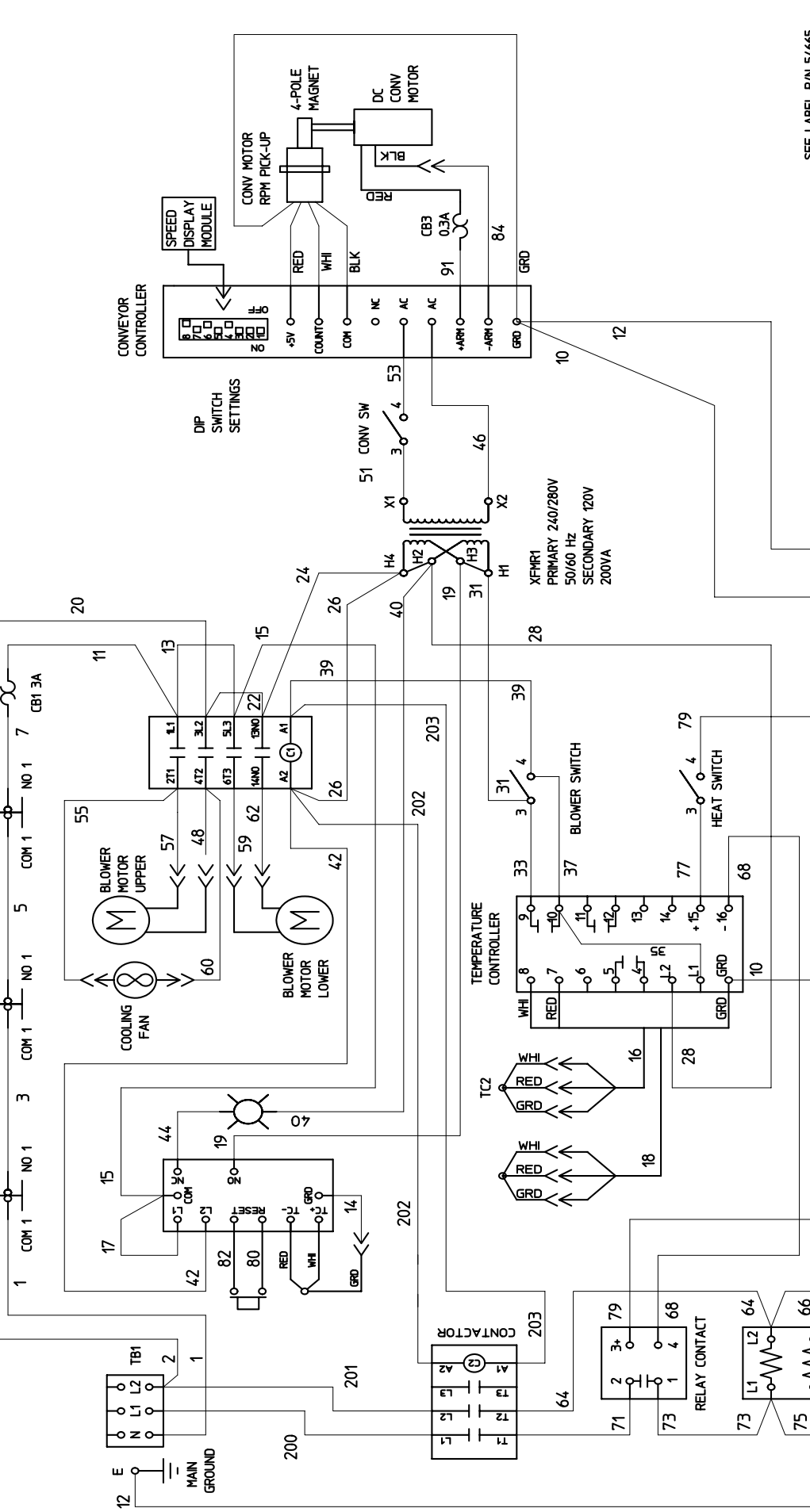
MATERIAL		TOLERANCE UNLESS SPECIFIED	
FINISH		ANGLES	+ 1.0*
		DEC	.X ±.030
			.XX ±.015
			.XXX ±.005
DRAWN		APPROVED	
02/01/2006	MS	02/01/2006	MS

BLODGETT

WD, E208-240V 1PH PS520/1820S	
ALL DIMENSIONS ARE IN INCHES UNLESS OTHERWISE SPECIFIED.	PART NO
DO NOT SCALE DRAWING	48713
SHT	1 OF 1
REV	J

VOLTAGE	KW	PHASE	AMPS
208	8.3	1	39.9
230-240	7.6 - 8.3	1	33.0 - 34.6

REV	DATE	ECN	REVISION DESCRIPTION	BY	CHK	DATE
G	02/10/2006	005632	ADDED AIR SWITCH	PC	NSS	02/22/2005
H	01/09/2006	005237	ADDED TCS LEAD 16.	1004	NSS	01/15/2005
J	02/07/2006	005632	REV'D AIR SWITCH & LEAD 210	1004	NSS	02/08/2006



SEE LABEL P/N 54665

BLOGGETT

TOLERANCE UNLESS SPECIFIED:
 ANGLES ± 1.0°
 DEC .X ± .030
 .XX ± .015
 .XXX ± .005

DRAWN: 1004
 CHECKED: NSS
 APPROVED: 1004
 DATE: 02/07/2006

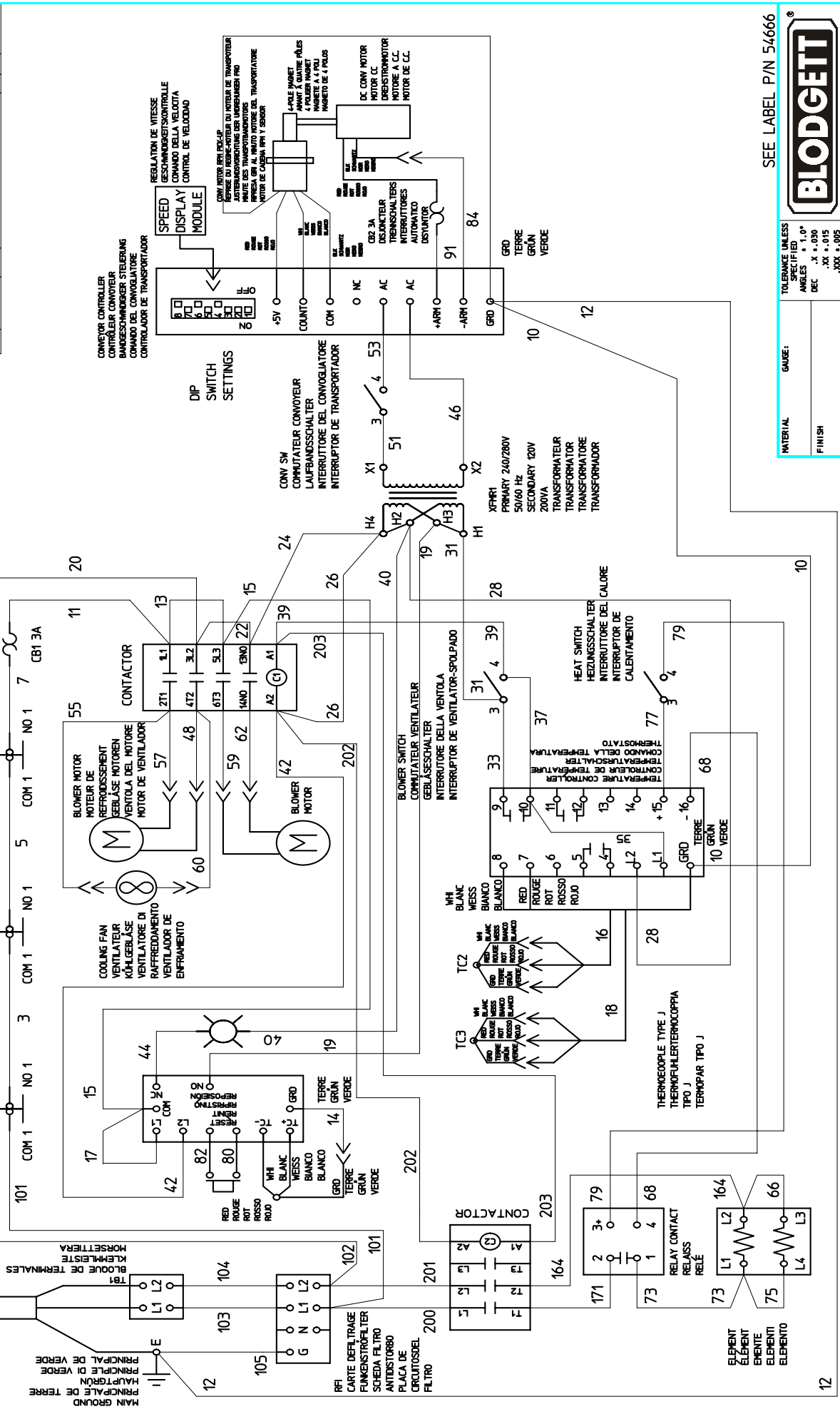
WD, E380-480V 1PH PS520/1820S

ALL DIMENSIONS ARE IN INCHES UNLESS OTHERWISE SPECIFIED.
 DO NOT SCALE DRAWING

PART NO: 52445
 SHT: 1 OF 1
 REV: J-

VOLTAGE	KW	PHASE	AMPS
380	8.3	1	21.8
480	8.3	1	17.3

REV	DATE	ECH	REVISION DESCRIPTION	BY	CHK	DATE
H	04/09/2006	005287	ADDED TC3 LEAD 18	MM	NSS	04/15/2006
J	02/07/2006	005052	REV'D AIR SWITCH & LEAD 210	MM	NSS	02/09/2006
K	03/04/2006	005052	REMOVED AIR SWITCH TEXT	MM	NSS	03/09/2006



SEE LABEL P/N 54666

BLOGGETT

TOLERANCE UNLESS SPECIFIED:
 ANGLES ± 1.0°
 DEC .X X .030
 .XX ± .015
 .XXX ± .005

MATERIAL GAUGE:
 FINISH

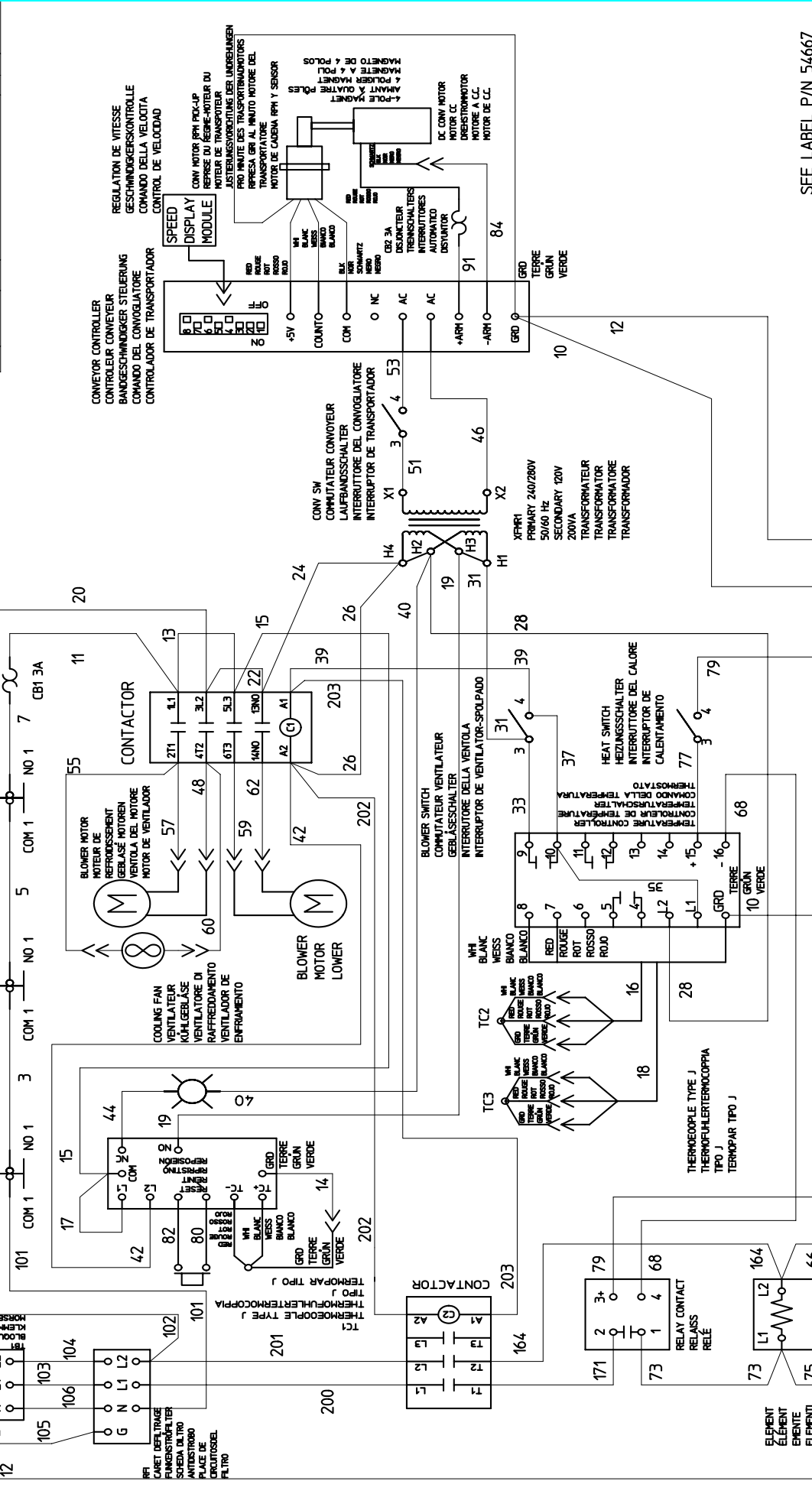
DRAWN MM 03/04/2006 NSS 03/09/2006 NSS 03/09/2006
 CHECKED APPROVED

WD, E230-240V CE 1PH 520/1820S
 PART NO 52446
 SHT 1 OF 1
 REV K-

ALL DIMENSIONS ARE IN INCHES UNLESS OTHERWISE SPECIFIED.
 DO NOT SCALE DRAWING

VOLTAGE	KW	PHASE	AMPS
230-240	7.6 - 8.3	1	33.0 - 34.6

REV	DATE	EON	REVISION DESCRIPTION	BY	CHK	DATE
G	02/09/2005	005052	ADDED AIR SWITCH	FC	NSS	02/27/2005
H	04/09/2005	005207	ADDED TC3 LEAD 18.	10H	NSS	04/15/2005
J	05/10/2006	005052	REV'D AIR SWITCH AND LEAD 210.	10H	NSS	05/10/2006



SEE LABEL P/N 54667

BLOGGETT

TOLERANCE UNLESS SPECIFIED IS $\pm 1.0^\circ$
 ANGLES $\pm 1.0^\circ$
 DEC. $\times .030$
 .XX $\times .015$
 .XXX $\times .005$

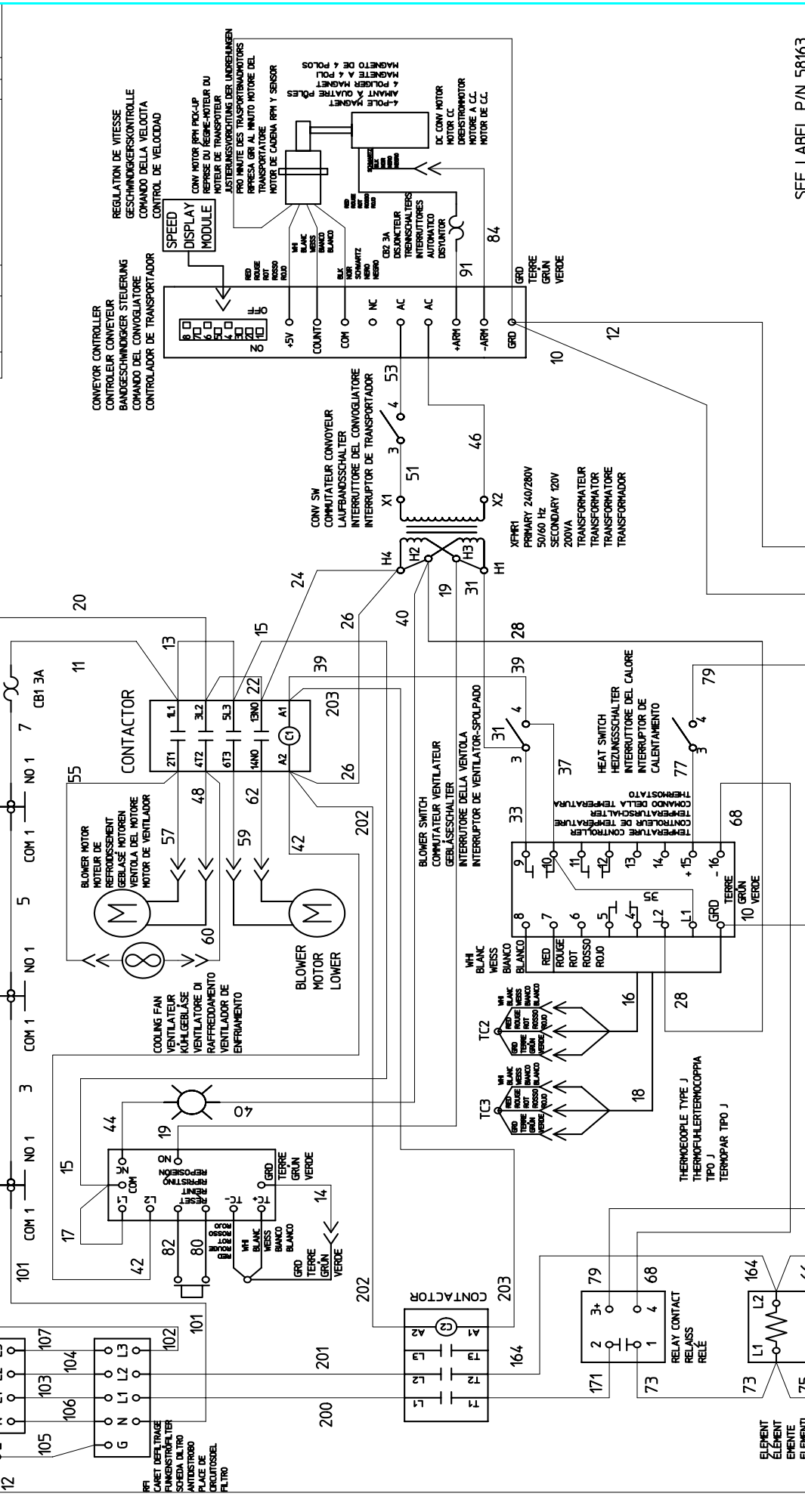
FINISH: APPROVED
 DRAWN: 05/10/2006
 CHECKED: 05/10/2006
 NISS

WD, E380-400V CE 1PH 520/1820S
 ALL DIMENSIONS ARE IN INCHES UNLESS OTHERWISE SPECIFIED.
 DO NOT SCALE DRAWING

PART NO: 54661
 SHT: 1 OF 1
 REV: J

VOLTAGE	KW	PHASE	AMPS
380-400	8.3 - 9.2	1	218 - 230

REV	DATE	EON	REVISION DESCRIPTION	BY	CHK	DATE
D	04/09/2005	005207	ADDED TC3 LEAD 10.	100H	NSS	04/15/2005
E	04/23/2005	005308	SEE LABEL P/N 58163 FOR CHANGE	AJ	NSS	04/23/2005
F	03/04/2006	005552	REMOVED AIR SWITCH & LEAD 210	100H	NSS	03/09/2006



SEE LABEL P/N 58163

BLOGGETT

TOLERANCE UNLESS SPECIFIED IN INCHES
 DEC .X +.030
 .XX +.015
 .XXX +.005

MATERIAL: GAUGE: APPROVED: 03/09/2006 NSS 03/09/2006

FINISH: CHECKED: 03/09/2006 NSS 03/09/2006

FORM: 03/09/2006 NSS 03/09/2006

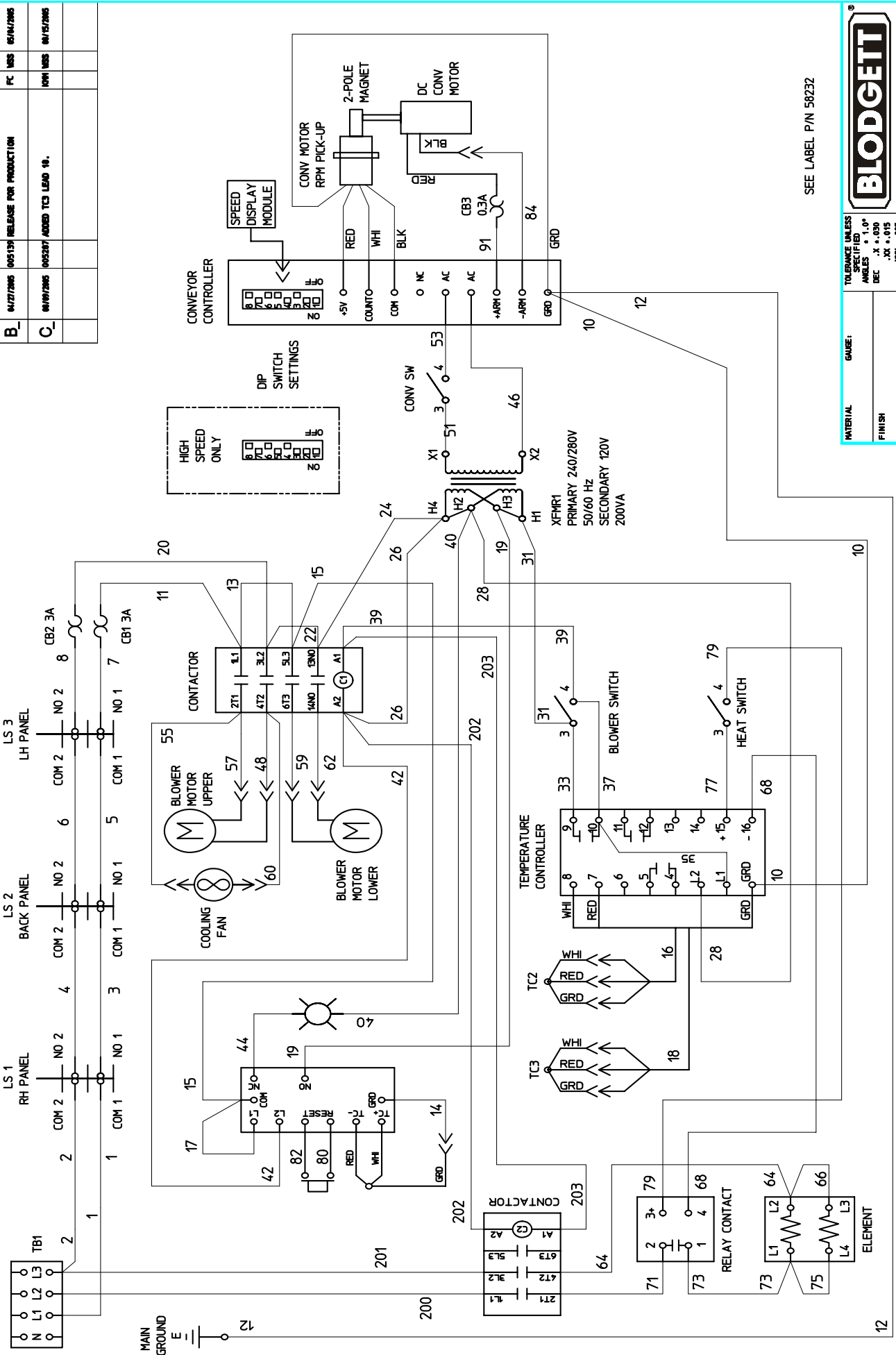
WD, E380-400CE 3PH 520/S1820 HL

ALL DIMENSIONS ARE IN INCHES UNLESS OTHERWISE SPECIFIED.
 DO NOT SCALE DRAWING.

PART NO: 58158
 SHT: 1 OF 1
 REV: F

VOLTAGE	KW	PHASE	AMPS	CONTROL AMPS
360-400	8.3 - 9.2	3	218 - 230	1.2
		L1	218 - 230	
		L2	218 - 230	
		L3	218 - 230	
		N		

REV	DATE	EDN	REVISION DESCRIPTION	BY	CHK	DATE
B	04/27/2005	005135	RELEASE FOR PRODUCTION	FC	NBS	05/04/2005
C	06/09/2005	005237	ADDED TC3 LEAD 19.	MMH	NBS	06/15/2005



SEE LABEL P/N 58232

MATERIAL	GAGE:	TOLERANCE UNLESS SPECIFIED	APPROVED
FINISH:		ANGLES ± 1.0°	NBS 06/15/2005
DRAWN	CHECKED	DEC .X ± .030	
MMH	MBS	.XX ± .015	
		.XXX ± .005	

WD, E 208-240V 3PH 520/S1820 HL	
PART NO	58227
SHT	1 OF 1
REV	C

VOLTAGE	KW	PHASE	L1	L2	L3
208	8.3	3	12	39.9	411
230-240	7.6 - 8.3	3	12	33.0 - 34.6	34.2 - 35.8



A = 51989 PLATE, OTR L16GN W/2 (12) 2 ROWS
 47758 PLATE, INNER
 47765 WLDMT, MANIFOLD L16 GN

B = 51990 PLATE, OTR L16GN W/2 (3) 3 (5) 3 ROWS
 47758 PLATE, INNER
 47765 WLDMT, MANIFOLD L16 GN

52249 Rev. F

Standard Air Finger Configuration (Old style September 2005 and before)



- A** = 51357 PLATE, OTR L5GN W/7 HOLES
51027 PLATE, INR L5 GN COL/ALUZ
51986 WLDMT, MANIFOLD L5GN PRTL BFL

- B** = 51356 PLATE, OTR L5GN W/2 ROWS
51027 PLATE, PLATE, INR L5 GN COL/ALUZ
51986 WLDMT, MANIFOLD L5GN PRTL BFL

- C** = 50682 PLATE, BLANK FULL

51988 Rev. D

Standard Air Finger Configuration (New style October 2005 and after)

NOTES

