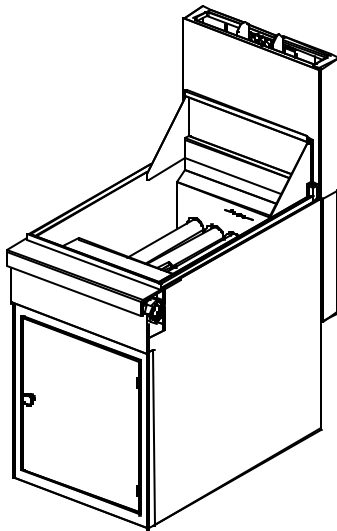
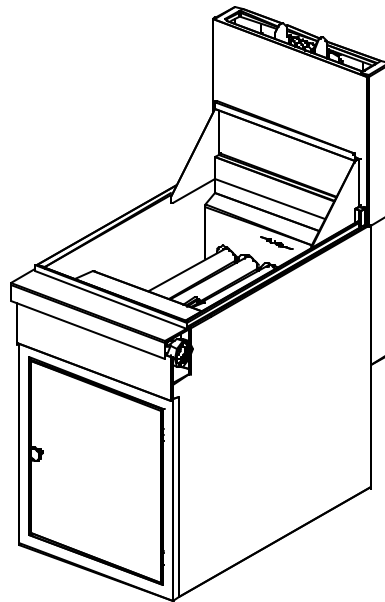




SECTIONAL DEEP FRYER REPLACEMENT PARTS LIST



Model B16-FR45



Model B20-FR65

BLODGETT OVEN COMPANY, 44 Lakeside Avenue, Burlington, Vermont 05401 USA

Telephone: (802) 860-3700 (800) 331-5842 Fax: (802) 860-3732

www.blodgett.com

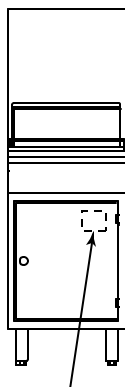
Superseding All Previous Parts Lists.

The Company reserves the right to make substitution in the event that items specified are not available.

ERRORS: Descriptive and/or typographic errors are subject to correction.

www.blodgett.com

IMPORTANT: When ordering parts, please provide the model, gas type and serial number of the unit. The identification plate is located inside the door on the left hand corner.



Location of Serial Plate

MODELS COVERED

**Sectional Deep Fryer Models:
B16-FR45, B20-FR65**

TO OBTAIN LITERATURE:

Blodgett Literature Department

800-331-5842, x2035

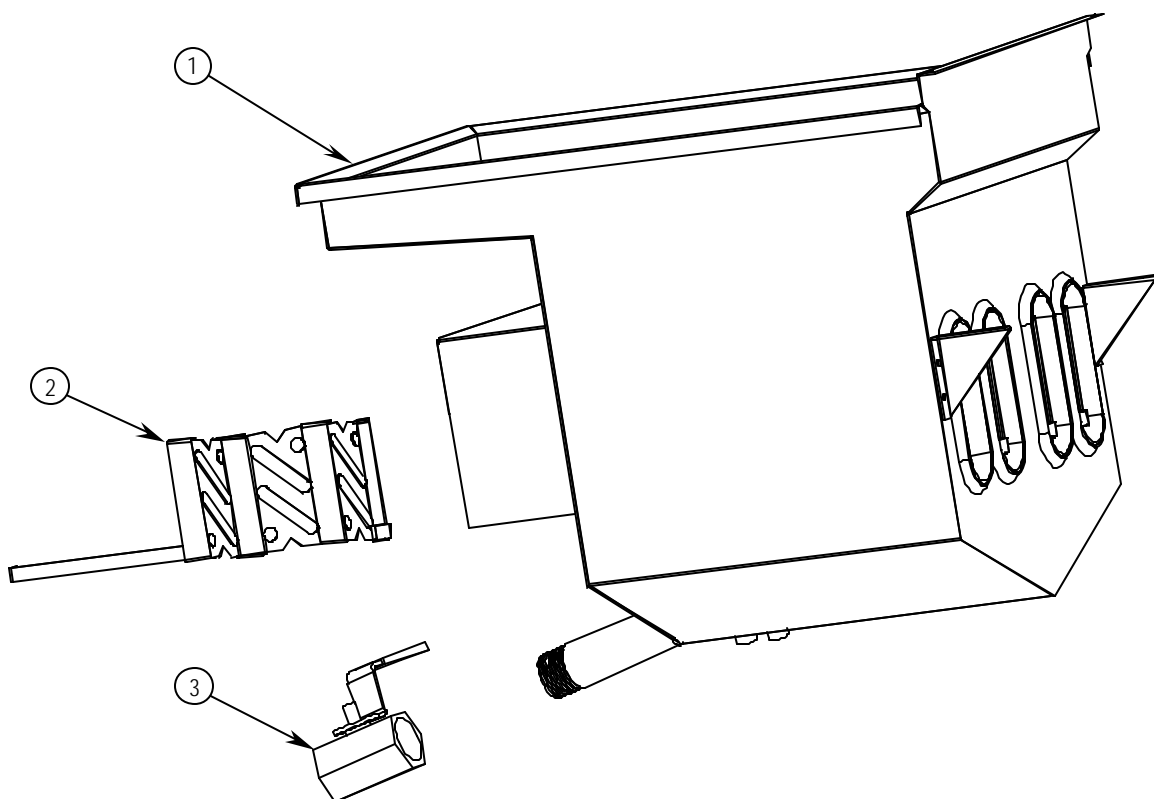
Fax: 802-860-3755

Email: literature@blodgett.com

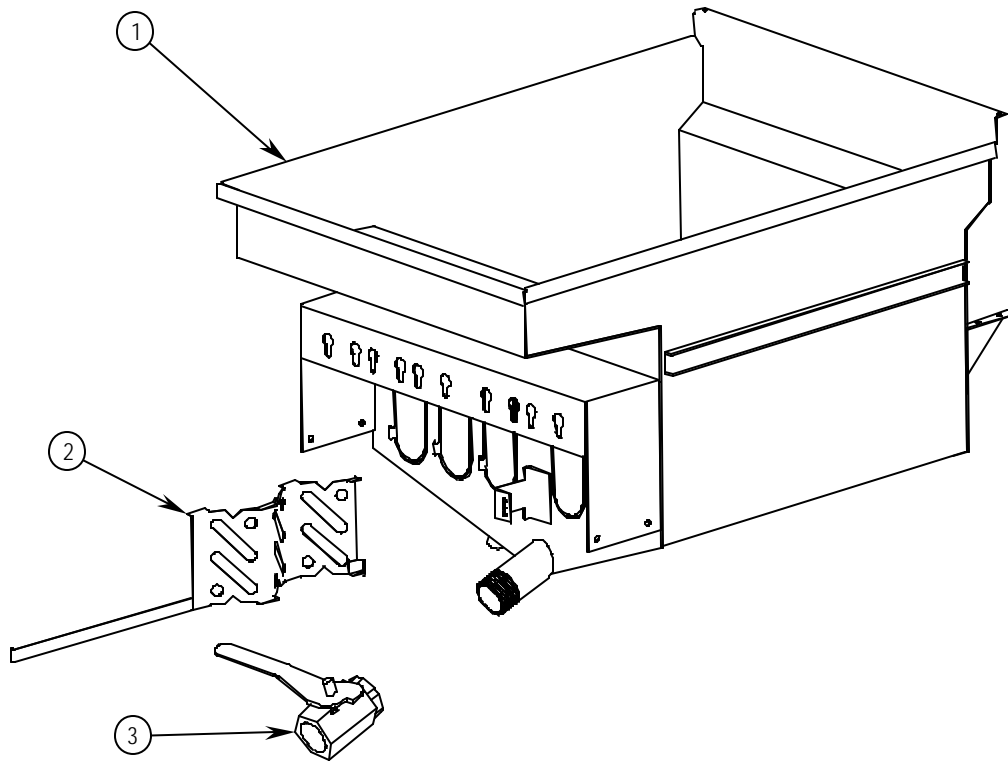
or

www.blodgett.com

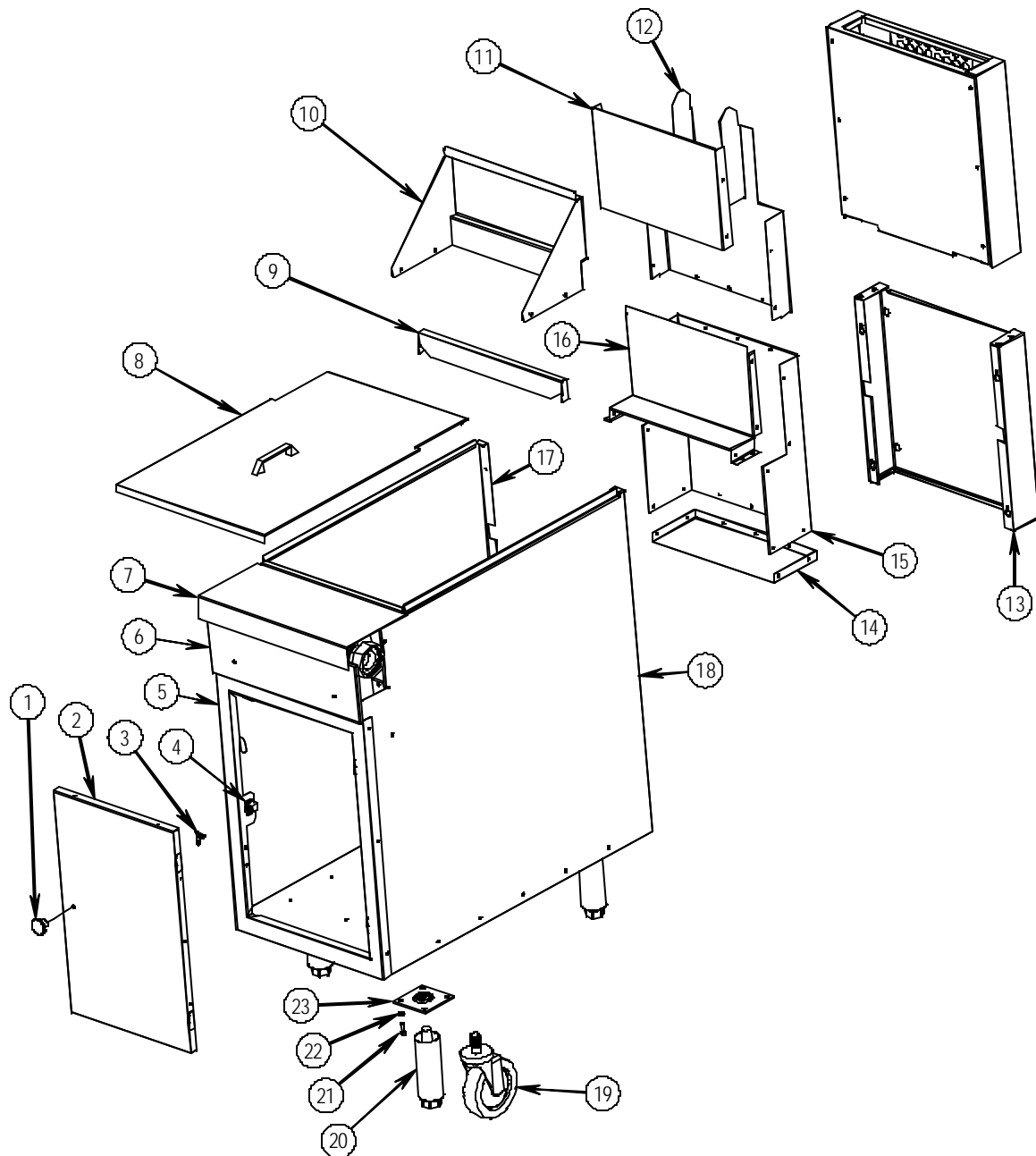
<i>FRY POT PARTS, B16-FR45</i>	<i>PAGE 4</i>
<i>FRY POT PARTS, B20-FR65</i>	<i>PAGE 5</i>
<i>CABINET PARTS, B16-FR45</i>	<i>PAGE 6 & 7</i>
<i>CABINET PARTS, B20-FR65</i>	<i>PAGE 8 & 9</i>
<i>GAS TRAIN PARTS, B16-FR45</i>	<i>PAGE 10 & 11</i>
<i>GAS TRAIN PARTS, B20-FR65</i>	<i>PAGE 12 & 13</i>

FRY POT PARTS, MODEL B16-FR45

<u>Key</u>	<u>Part Number</u>	<u>Qty</u>	<u>Description</u>
1	Z1182221	1	FRYPOT WELD ASSEMBLY
2	Z1182262	4	BAFFLE WELD ASSEMBLY
3	Z1182238	1	VALVE, BALL, 1-1/4 IN
	Z1036618	1	THERMOSTAT BULB CLAMP
	Z1140700	1	SCREEN, TUBE, 14" FRYER
	ZP9181	2	BASKET, FRYER, 14", SINGLE
	Z1176845	1	DRAIN PIPE EXTENSION
	Z1176846	1	CLEAN OUT ROD (OPTIONAL)

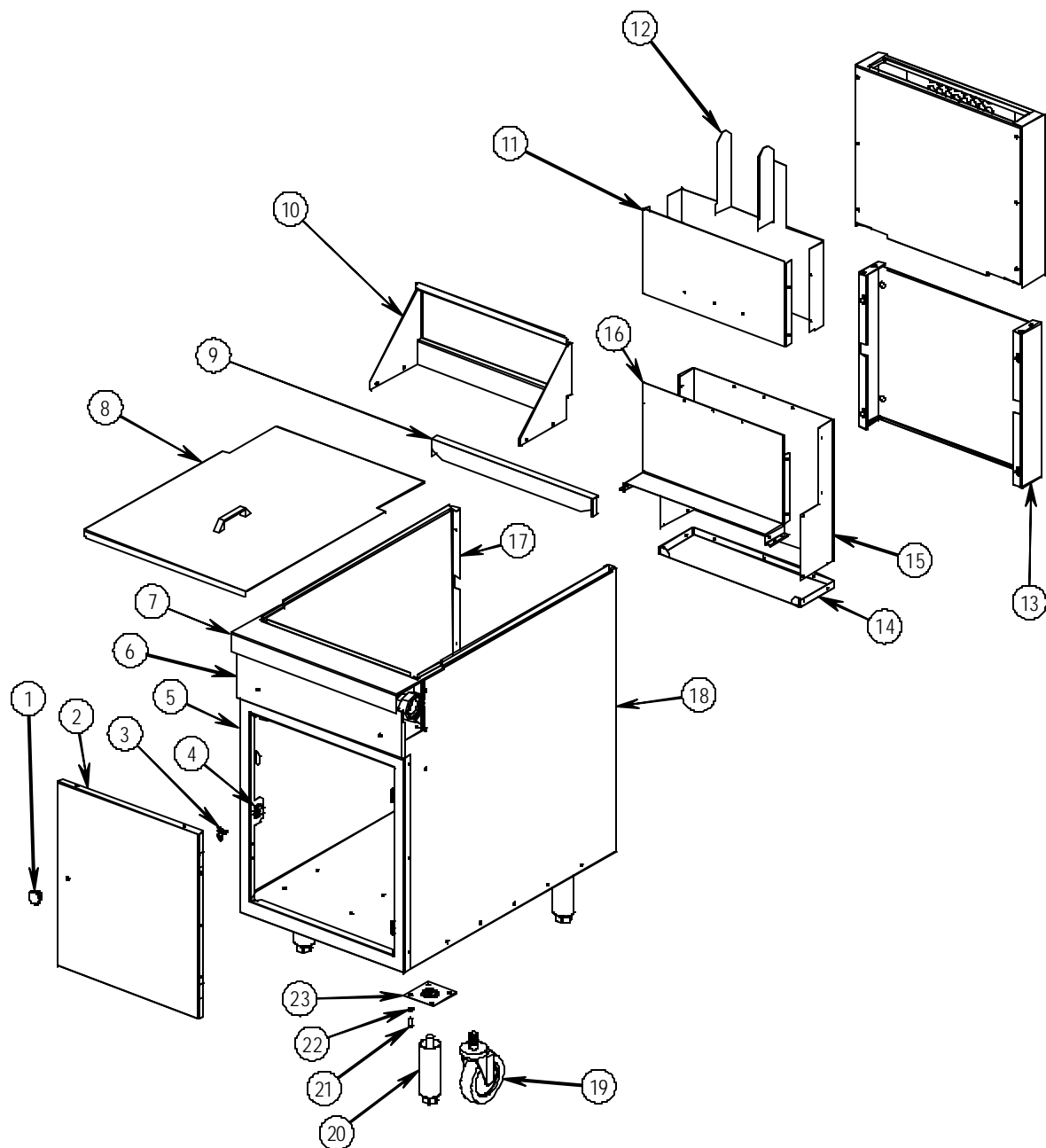
FRY POT PARTS, MODEL B20-FR65

<u>Key</u>	<u>Part Number</u>	<u>Qty</u>	<u>Description</u>
1	Z1182005	1	FRYPOT WELD ASSEMBLY
2	Z1182021	5	BAFFLE WELD ASSEMBLY
3	Z1176853	1	VALVE, BALL
	Z1036618	1	THERMOSTAT BULB CLAMP
	Z1140701	1	SCREEN, TUBE, 18" FRYER
	ZP9183	2	BASKET, FRYER, 18", SINGLE
	Z1176845	1	DRAIN PIPE EXTENSION
	Z1176846	1	CLEAN OUT ROD (OPTIONAL)

CABINET PARTS, MODEL B16-FR45

CABINET PARTS, MODEL B16-FR45

<u>Key</u>	<u>Part Number</u>	<u>Qty</u>	<u>Description</u>
1	Z1-2849	1	KNOB, DOOR
2	Z2391	1	CABINET DOOR ASSEMBLY
3	Z1164132	1	DOOR STRIKER
4	Z1164133	1	CATCH, DOOR
5	Z2835	1	BODY FRONT
6	Z1164541	1	VALVE PANEL
7	Z1182138	1	MANIFOLD ASSEMBLY, COMPLETE
8	Z1182372	1	COVER SUBASSEMBLY, 16" SECTIONAL FRYER
9	Z1182375	1	FILLER, REAR 45LB
10	Z1182376	1	HANGER, BASKET
11	Z1182355	1	FLUE EXTENSION, FRONT, SECTIONAL FRYER
12	Z1182356	1	FLUE EXTENSION, REAR, SECTIONAL FRYER
13	Z1182114	1	FLUE BOX, 36" SECTIONAL FRYER
	Z1182113	1	FLUE BOX, 42" SECTIONAL FRYER
14	Z1182119	1	FLUE BOTTOM, 36" SECTIONAL FRYER
	Z1182108	1	FLUE BOTTOM, 42" SECTIONAL FRYER
15	Z1182118	1	FLUE BACK, 36" SECTIONAL FRYER
	Z1182107	1	FLUE BACK, 42" SECTIONAL FRYER
16	Z1182117	1	FLUE FRONT, 36" SECTIONAL FRYER
	Z1182106	1	FLUE FRONT, 42" SECTIONAL FRYER
17	Z1183704	1	BODY SIDE, LEFT
	Z1183706	1	BODY SIDE, LEFT, WITH FRYER FILTER
18	Z1183703	1	BODY SIDE, RIGHT
	Z1183705	1	BODY SIDE, RIGHT, WITH FRYER FILTER
19	Z1174265	1	CASTER, 4-BOLT (SET OF FOUR; TWO FRONT WITH BRAKE, TWO REAR WITHOUT BRAKE)
20	Z1174260	1	LEG (SET OF FOUR)
21	Z1146201	16	SCREW, 1/4-20X3/4, HEX HEAD
22	Z1146500	16	WASHER, 1/4, LOCK
23	Z1172650	1	PAD, LEG 3/4 STUD (SET OF FOUR)
	Z1182370	1	FILLER, 42" FLUE DEPTH, BOX TOP

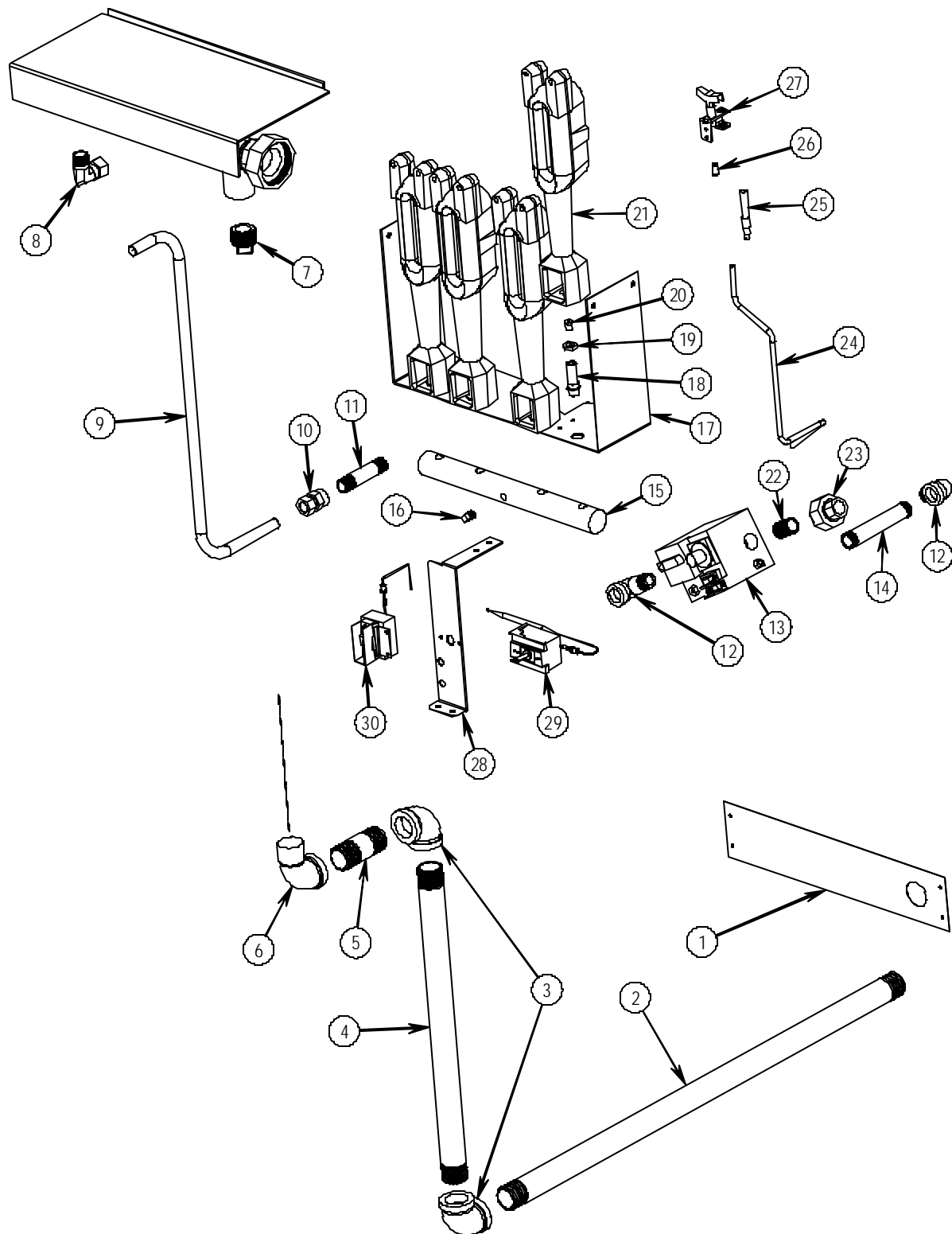
CABINET PARTS, MODEL B20-FR65

CABINET PARTS, MODEL B20-FR65

<u>Key</u>	<u>Part Number</u>	<u>Qty</u>	<u>Description</u>
1	Z1-2849	1	KNOB, DOOR
2	Z1183730	1	DOOR ASSEMBLY, COMPLETE
3	Z1164132	1	DOOR STRIKER
4	Z1164133	1	CATCH, DOOR
5	Z1183724	1	BODY FRONT
6	Z1183722	1	VALVE PANEL
7	Z1183709	1	MANIFOLD ASSEMBLY, COMPLETE
8	Z1183740	1	COVER SUBASSEMBLY, FRYPOT
9	Z1183761	1	FILLER, REAR 65LB
10	Z1183759	1	HANGER, BASKET
11	Z1183718	1	FLUE EXTENSION, FRONT
12	Z1183719	1	FLUE EXTENSION, REAR
13	Z1183720	1	FLUE BOX, 36" SECTIONAL FRYER
	Z1183721	1	FLUE BOX, 42" SECTIONAL FRYER
14	Z1183713	1	FLUE BOTTOM, 36" SECTIONAL FRYER
	Z1183716	1	FLUE BOTTOM, 42" SECTIONAL FRYER
15	Z1183712	1	FLUE BACK, 36" SECTIONAL FRYER
	Z1183715	1	FLUE BACK, 42" SECTIONAL FRYER
16	Z1183714	1	FLUE FRONT, 36" SECTIONAL FRYER
	Z1183717	1	FLUE FRONT, 42" SECTIONAL FRYER
17	Z1183704	1	BODY SIDE, LEFT
	Z1183706	1	BODY SIDE, LEFT, WITH FRYER FILTER
18	Z1183703	1	BODY SIDE, RIGHT
	Z1183705	1	BODY SIDE, RIGHT, WITH FRYER FILTER
19	Z1174265	1	CASTER, 4-BOLT (SET OF FOUR; 2 FRONT W/BRAKE, 2 REAR W/O BRAKE)
20	Z1174260	1	LEG (SET OF FOUR)
21	Z1146201	16	SCREW, 1/4-20X3/4, HEX HEAD
22	Z1146500	16	WASHER, 1/4, LOCK
23	Z1172650	1	PAD, LEG, 3/4 STUD (SET OF FOUR)
	Z1183745	1	FILLER, 65LB 42" FLUE BOX TOP

GAS TRAIN PARTS, MODEL B16-FR45

<u>Key</u>	<u>Part Number</u>	<u>Qty</u>	<u>Description</u>
1	Z1165400	1	REAR GAS BRACKET (FOR UNITS WITH OPTIONAL REAR GAS CONNECTION)
2	Z1163527	1	TAIL PIPE (FOR UNITS WITH OPTIONAL REAR GAS CONNECTION)
3	Z1146905	2	ELBOW, ST. BLACK., 1" 90 DEG (FOR UNITS WITH OPTIONAL REAR GAS CONNECTION)
4	Z1163567	1	RR GAS SUP VERT (FOR UNITS WITH OPTIONAL REAR GAS CONNECTION)
5	Z1146832	1	NIPPLE, PIPE, BLK, 1"X3" (FOR UNITS WITH OPTIONAL REAR GAS CONNECTION)
6	Z1146911	1	ELBOW, ST. BLACK., 1" 90 DEG (FOR UNITS WITH OPTIONAL REAR GAS CONNECTION)
7	Z1147012	1	PLUG, PIPE
8	Z1160008	1	ELBOW, BRASS
9	Z1182121	1	TUBING, GAS SUPPLY
10	Z1182135	1	FITTING, 1/2 NPT(F) X 5/8 CC, STRT, BRASS
11	Z1146825	1	NIPPLE, PIPE, BLK, 1/2"X3.5"
12	Z1146909	2	ELBOW, ST. BLACK., 1/2" 90 DEG
13	Z1182069	1	VALVE, COMBINATION, NATURAL GAS
	Z1182103	1	VALVE, COMBINATION, LP GAS
14	Z1175216	1	NIPPLE, 1/2 X 4-1/2, BLACK
15	Z1182237	1	MANIFOLD, 4 BURNER
16	Z1147007	1	PLUG, PIPE BLACK, 1/8
17	Z1182056	1	BRACKET, MANIFOLD SUPPORT (45)
18	Z1182034	4	FITTING, GAS ORIFICE
19	Z1036604	4	NUT AIR COLLAR
20	Z1182040	4	ORIFICE, MAIN, NATURAL GAS (#36)
	Z1182043	4	ORIFICE, MAIN, PROPANE (#52)
21	Z1182155	4	BURNER, FRYER, 6 INCH
22	Z1146806	1	NIPPLE, PIPE, CLOSE, BLK, 1/2"
23	ZP5239-4	1	UNION, BLACK, 1/2"
24	Z1182077	1	TUBE, PILOT
25	Z1182154	1	THERMOPILE
26	Z1054118	1	PILOT ORIFICE, NAT
	Z1054111	1	PILOT ORIFICE, PROPANE (0.011", ORIFICE ONLY)
27	Z1054197	1	PILOT ASSEMBLY, 0.018, NATURAL GAS
28	Z1182116	1	BRACKET CONTROL
29	Z1182151	1	THERMOSTAT, REGULATING
30	Z1182150	1	THERMOSTAT, LIMITING

GAS TRAIN PARTS, MODEL B20-FR65

GAS TRAIN PARTS, MODEL B20-FR65

<u>Key</u>	<u>Part Number</u>	<u>Qty</u>	<u>Description</u>
1	Z1183744	1	SUPPORT, REAR GAS (FOR UNITS WITH OPTIONAL REAR GAS CONNECTION)
2	Z1183743	1	NIPPLE, PIPE, BLK 1" X 28" (FOR UNITS WITH OPTIONAL REAR GAS CONNECTION)
3	Z1146905	2	ELBOW, ST. BLACK., 1" 90 DEG (FOR UNITS WITH OPTIONAL REAR GAS CONNECTION)
4	Z1183742	1	NIPPLE, PIPE, BLK 1" X 15" (FOR UNITS WITH OPTIONAL REAR GAS CONNECTION)
5	Z1183741	1	NIPPLE, PIPE, BLK, 1"X2.5" (FOR UNITS WITH OPTIONAL REAR GAS CONNECTION)
6	Z1146911	1	ELBOW, ST. BLACK., 1" 90 DEG (FOR UNITS WITH OPTIONAL REAR GAS CONNECTION)
7	Z1147012	1	PLUG, PIPE
8	Z1160008	1	ELBOW, BRASS
9	Z1183734	1	TUBE, SUPPLY GAS
10	Z1182135	1	FITTING, 1/2 NPT(F) X 5/8 CC, STRT, BRASS
11	Z1146825	1	NIPPLE, PIPE, BLK, 1/2"X3.5"
12	Z1146913	1	ELBOW, RED. BLACK., 3/4 X 1/2, 90 DEG
13	Z1146806	1	NIPPLE, PIPE, CLOSE, BLK, 1/2"
14	Z1182069	1	VALVE, COMBINATION, NATURAL GAS
	Z1182103	1	VALVE, COMBINATION, LP GAS
15	Z1175216	1	NIPPLE, 1/2 X 4-1/2, BLACK
16	Z1146909	1	ELBOW, ST., BLK, 1/2" 90 DEG
17	Z1182243	1	MANIFOLD 5 BURNER
18	Z1147007	1	PLUG, PIPE BLACK, 1/8"
19	Z1182057	1	BRACKET, MANIFOLD SUPPORT (65)
20	Z1182034	5	FITTING, GAS ORIFICE
21	Z1036604	5	NUT AIR COLLAR
22	Z1182042	5	ORIFICE, MAIN, NATURAL GAS (#38)
	Z1182043	5	ORIFICE, MAIN, PROPANE (#52)
23	Z1182155	5	BURNER, FRYER, 6 INCH
24	ZP5239-4	1	UNION, BLACK, 1/2"
25	Z1183736	1	TUBE, PILOT SUPPLY
26	Z1182154	1	THERMOPILE
27	Z1054118	1	PILOT ORIFICE, NAT
	Z1054111	1	PILOT ORIFICE, PROPANE (0.011", ORIFICE ONLY)
28	Z1054197	1	PILOT ASSEMBLY, 0.018, NATURAL GAS
29	Z1183735	1	BRACKET CONTROLS SUPPORT
30	Z1182151	1	THERMOSTAT, REGULATING
31	Z1182150	1	THERMOSTAT, LIMITING
	Z4440499	1	NATURAL TO LP GAS CONVERSION KIT