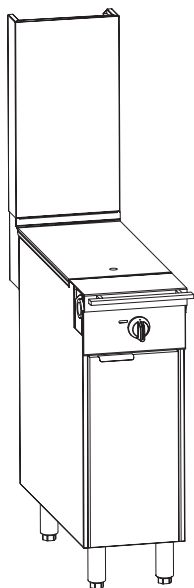




## B12-H

12" Heavy Duty Sectional Range with  
Full Width Hot Top



Model B12C-H with 24" Flue Riser

### OPTIONS AND ACCESSORIES

(AT ADDITIONAL CHARGE)

- Flue riser
  - ☐ 24"
  - ☐ 36"
- Single-shelf (mounts on 24" flue riser)
  - ☐ Solid shelf
  - ☐ Tubed shelf
- Double-shelf (mounts on 36" flue riser)
  - ☐ Solid shelves
  - ☐ Tubed shelves
- ☐ Stainless-steel back
- ☐ Deep range depth
- ☐ Bolt down flange feet
- ☐ Casters (in lieu of legs)
- ☐ Open frame base with casters
- ☐ Cable restraint kit for units on casters



Project \_\_\_\_\_

Item No. \_\_\_\_\_

Quantity \_\_\_\_\_

- ☐ Model B12C-H (Cabinet Base)
- ☐ Model B12N-H (Modular Range-Top)

The Blodgett 12"-wide sectional-range with full width hot top is available with either a storage cabinet or with no base (for mounting as a modular range-top). Three flue-riser heights are available, and the flue riser can support up to 250 lbs for an optional shelf. An optional rearward-extending flue riser is available to increase the overall depth to match a deep battery. Battery-design assistance is available!

### SPECIFY

- |  |   |   |
|--|---|---|
| Gas Type   | <input type="checkbox"/> Natural Gas    | <input type="checkbox"/> Propane  |
| Manifold   | <input type="checkbox"/> Front (1-1/4") | <input type="checkbox"/> Rear (1")  |
| Flue Riser Height  | <input type="checkbox"/> 5"             | <input type="checkbox"/> 24" (option) <input type="checkbox"/> 36" (option) |
| Range Depth  | <input type="checkbox"/> Standard       | <input type="checkbox"/> Deep (option)                                      |
| Position in Battery                                      | <input type="checkbox"/> Left End       | <input type="checkbox"/> Right End <input type="checkbox"/> Not at End      |
| Operating altitude (if above 2000 ft (700 meters) _____) |   |   |

Blodgett can often accommodate special or custom requirements. Contact your Blodgett representative.

### STANDARD FEATURES (All models)

- 32,000 BTU
- Cast iron surface with surface temperature of up to 700°F
- 5" flue riser
- 7" stainless-steel front rail with "belly bar"
- Standard range depth
- Battery end-units have solid side (no manifold cover plate)
- Stainless-steel front and sides
- Fully insulated lining and burner boxes
- 6" adjustable legs (except on modular range-top model)
- Warranty: two year parts and labor from date of purchase

### STANDARD FEATURES (Base Cabinets)

- Stainless-steel door

MODEL B12-H

**BLODGETT**

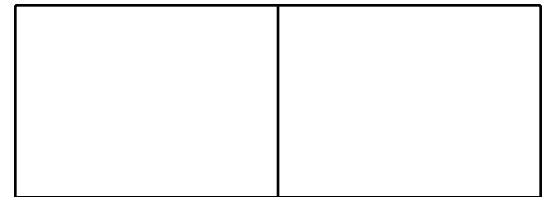
[www.blodgett.com](http://www.blodgett.com)

1100 Old Honeycutt Road Fuquay-Varina, NC 27526 USA

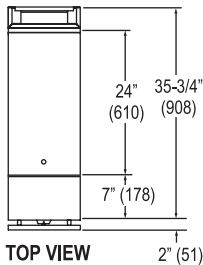
Phone: (877) 255-3976 • Fax: (866) 644-1354



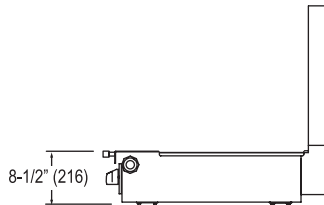
## MODEL B12-H



APPROVAL/STAMP



TOP VIEW

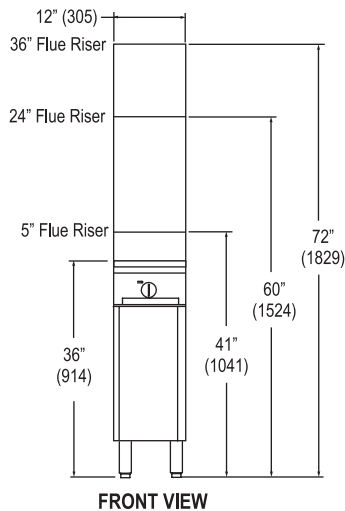


SIDE VIEW of MODULAR MODEL

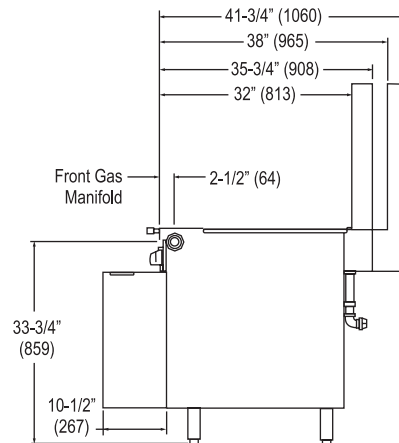
SHIPPING CRATE DIMENSIONS & WEIGHT (Door entry clearance when uncrated is 12.5")					
Model	Width	Height	Depth	Volume	Weight
B12C-H	20.0 (508)	45.0 (1143)	42.5 (1080)	22.1 cu ft (0.63 cu m)	180 lbs (82 kg)
B12N-H	20.0 (508)	23.0 (584)	42.5 (1080)	11.3 cu ft (0.32 cu m)	130 lbs (59 kg)

Dimensions are in inches and (millimeters)

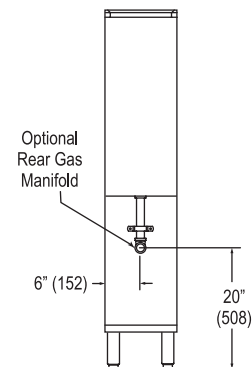
Flue riser for "deep" depth-option extends rearward 6"  
(cooking surface area is same as for "standard" depth).



FRONT VIEW



SIDE VIEW



REAR VIEW

Minimum clearance from noncombustible construction is zero.  
Minimum clearance from combustible construction is 10" on sides and 12" on rear.

### SHORT FORM SPECIFICATIONS

The item shall be a 12"-wide front-manifold sectional range with full width 32,000 BTU hot top with cast iron surface and an operating surface temperature of up to 700°F. The item shall have a 7" front rail and a belly bar. The item shall have 6" adjustable legs [casters]. The item shall have a [5" 24" 36"] flue riser able to support 250 pounds. The exterior (except for the back) shall be constructed of 430 stainless steel #3 polish. If the item is at the end of a battery, the end side shall be solid (rather than have a coverplate over the end of the front manifold).

Model B12C-H: The item shall have a cabinet base with stainless steel door.

### UTILITY INFORMATION

MODEL	GAS (BTU/hr)	
	Natural Gas	Propane
B12N-H	32,000	28,000
B12C-H	32,000	28,000

GAS: Each unit has a 1-1/4" front gas manifold that couples to the adjacent sectional unit(s), and can be ordered with a 1" rear gas connection with a male NPT connector. Minimum supply pressure is 7" W.C. for natural gas, 11" W.C. for propane. An external pressure regulator and shut off valve must be provided. If using a flexible-hose gas connection, the I.D. of the hose must not be smaller than the connector on the unit and must comply with ANSI Z21.69. Provide an adequate means of restraint to prevent undue strain on the gas connection.

FLUE EXHAUST: Installation under a vented hood is recommended.

### OTHER TECHNICAL INFORMATION

Exterior surfaces are 430 stainless steel #3 polish, except the back is aluminized steel.

The control knob is located on the front panel.

Check local codes for fire and sanitary regulations.

**NOTE:** The company reserves the right to make substitutions of components without prior notice

**BLODGETT**

www.blodgett.com

1100 Old Honeycutt Road Fuquay-Varina, NC 27526 USA

Phone: (877) 255-3976 • Fax: (866) 644-1354