

Fresh Mix Dispenser with 3 Hoppers



FMD-3

Dimensions: 30"H x 11.3"W x 23.3"D
(76.2 cm H x 28.7 cm W x 59.2 cm D)



FMD DBC-3

Dimensions: 30"H x 11.3"W x 23.3"D
(76.2 cm H x 28.7 cm W x 59.2 cm D)

Features

Fresh Mix Dispenser

- Variable speed motors allow control of product consistency in mixing chamber (.75 to 6.6 grams of powder per second).
- Lighted front graphics for merchandising are easy to exchange: cappuccino or soup.
- Additional displays available.
- Attractive high-impact resin door is dent and scratch resistant.
- Large easy-to-fill translucent hoppers hold 4 lbs. (1.81 kg) of product each, ensuring quick and timely refilling.
- High speed heavy-duty whipper for complete product mixing.
- Improved automatic rinsing of whipper reduces run-on after beverage is dispensed.
- Adjustable legs and drip tray accommodate 20 oz. (591.5 mL) mugs easily.
- Electrical and plumbing components easily accessible through front and top.

FMD DBC Dispenser

- Easy-to-program, one-touch portion control for 3 cup sizes.
- Fast fill perfect for quick service restaurants.
- Each mixing chamber has independent powder to water ratio.
- System setup is password protected for safety.
- Simple setup and hopper throw calibration system.
- Hot water dispense.



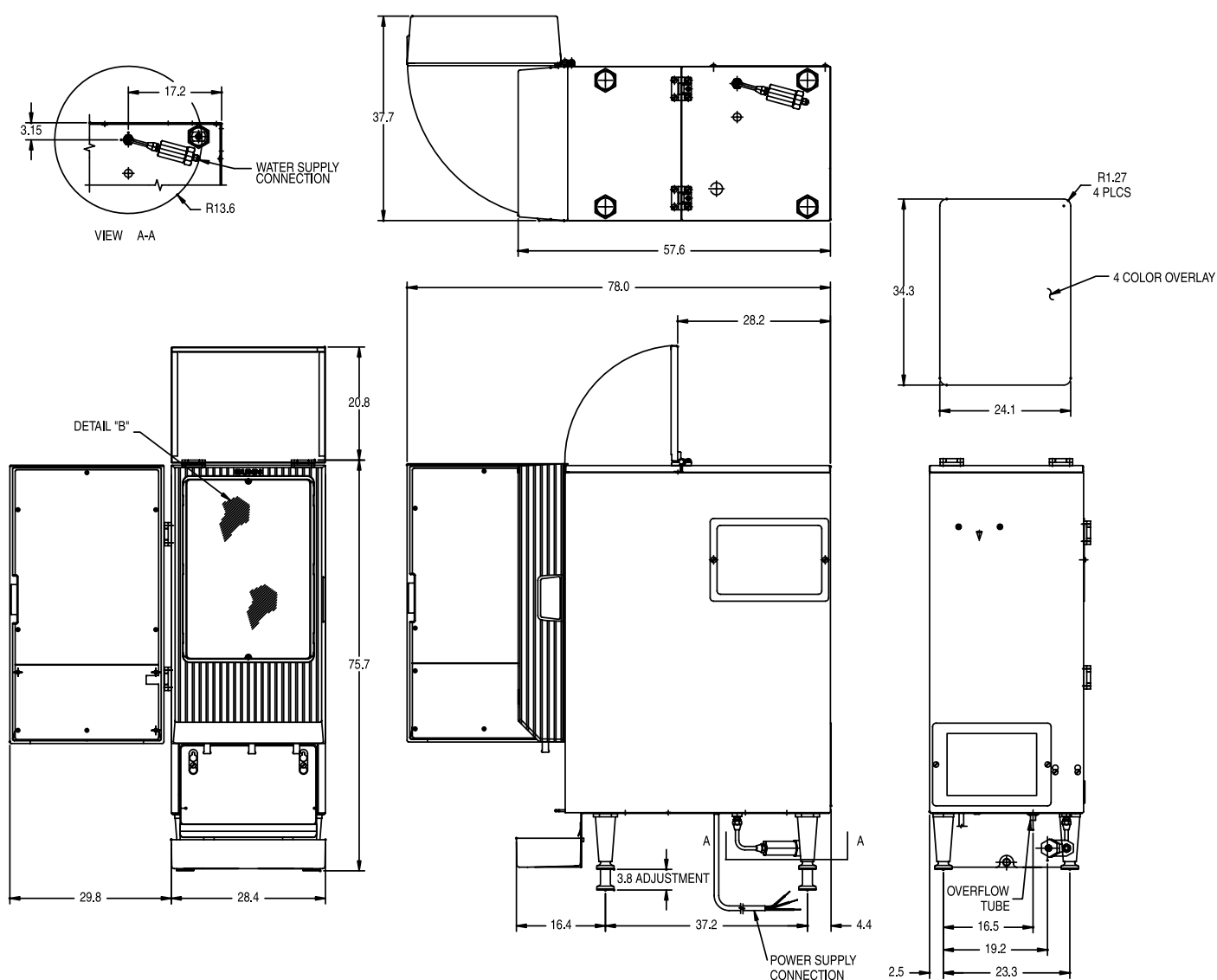
Dimensions & Specifications

Model	Product #	Volts	Amps	Tank Heater Watts	Total Watts	Capacity	Shipping Weight	Cord Attached	Agency
FMDA-3 SS	28200.0048	230	15	3500	3600	8.7 gal./hr. (32.9 L/hr.)	87 lbs. (39.5 kg)	Yes	CE
FMDA-3 DBC	29250.0010	230	15	3500	3600	8.7 gal./hr. (32.9 L/hr.)	85 lbs. (38.6 kg)	Yes	CE
FMDA-3 DBC†	SET00.0174	230	15	3500	3600	8.7 gal./hr. (32.9 L/hr.)	85 lbs. (38.6 kg)	Yes	CE

†German manuals

Electrical: 230V model requires 2 wires plus ground service rated 220-240V, single phase, 50/60 Hz.

Plumbing: 20-90 psi (138-621 kPa) from a $\frac{3}{8}$ " or larger supply line. A shut-off valve should be installed in the line before the unit. Install a regulator in line when pressure is greater than 90 psi to reduce it to 50 psi. Supplied with $\frac{1}{4}$ " male flare fitting. Tank capacity is 3.2 gal (12.2 L).



Bunn-O-Matic® Corporation - 1400 Stevenson Drive Springfield, Illinois 62703 • USA • +1-217-529-6601 • Fax +1-217-529-2827 • www.bunn.com

BUNN® practices continuous product research and improvement. We reserve the right to change specifications and product design without notice. Such revisions do not entitle the buyer to corresponding changes, improvements, additions or replacements for previously purchased equipment.

All dimensions shown in centimeters.

5/09 © Bunn-O-Matic Corporation