

## Single® Brewer with Portable Server

ITEM#

PROJECT

DATE



**Single®  
with 1.5GPR server**

Dimensions: 29.3" H x 9.25" W x 19" D  
(74.4cm H x 54.9cm W x 48.3cm D)

### Features

#### Single Coffee Brewer

- Brews ½, 1, or 1½ gallon (1.9, 3.8 and 5.7 litre) batches.
- Adjustable bypass ensures perfect coffee regardless of batch size.
- Hot water faucet does not affect brew level.
- Electronic timer ensures fast set up and accurate brew levels.
- Electronic grinder interface instructs grinder on exact amount of coffee for selected brew batch size.
- 1.5GPR portable server (included) has a patented Safety-Fresh® brew-through lid with vapor seal and spill protection.
- SplashGard® funnel deflects hot liquids away from the hand.
- Brew capacity varies by model. See back for details.

For current specification sheets and other information, go to [www.bunn.com](http://www.bunn.com).

*International models may vary in appearance.*

### Related Products

**Easy Clear® EQHP-10**  
Product No.: 39000.0004



**Easy Clear® EQHP-10L**  
Product No.: 39000.0001

**Drip Tray**  
for use with 1.5GPR




**Single/Dual Filter Pack**  
Product No.: 20138.0000



**RWS1 with 1.5GPR**



## Dimensions & Specifications

Model	Product #	Volts	Amps	Tank Heater Watts	Total Watts	Brewing Capacity	Shipping Weight	Cord Attached	Agency
Single	23050.0049	230	13.7	3031	3150	8.7 gal/hr. (32.9 L/hr.)	58 lbs. (26.3 kg)	No	CE 
Single	23050.0047	200	19.3	3031	3850	8.7 gal/hr. (32.9 L/hr.)	65 lbs. (29.5 kg)	No	

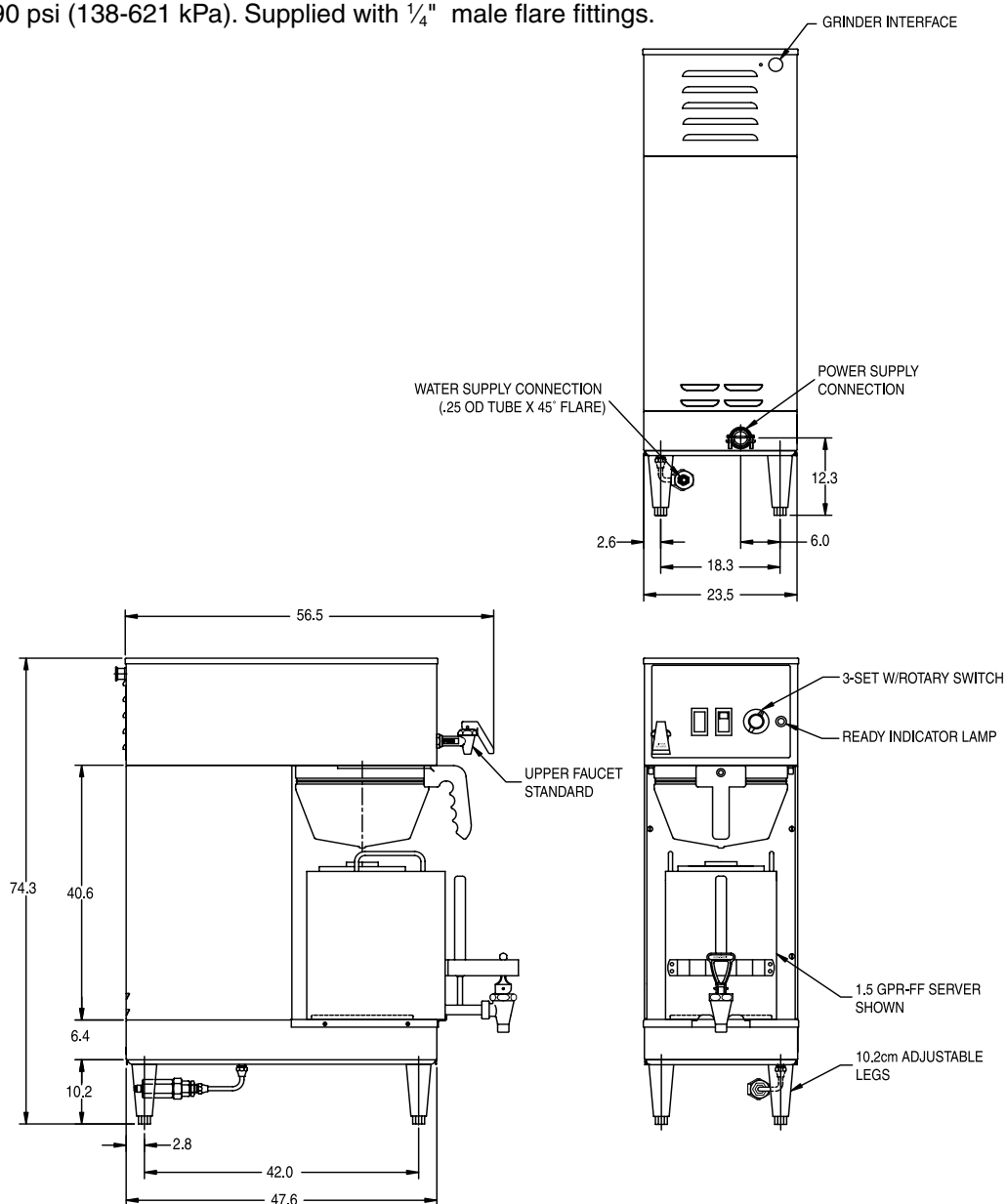
All include Safety-Fresh® server with additional orange faucet handle and decal for decaf service (20950.0004).

**Brewing capacity:** based upon incoming water temp of 60°F (15.5°C) (140°F (60°C) rise) per 1/2 gallon (1.89 litre) brew time of 4 minutes.

Electrical: 230 volt model requires 2 wires plus ground service rated 220-240V, single phase, 50/60 Hz.

200 volt model requires 2 wires plus ground service, single phase, 50 Hz.

Plumbing: 20-90 psi (138-621 kPa). Supplied with 1/4" male flare fittings.



BUNN Corporation - 1400 Stevenson Drive Springfield, Illinois 62703 • USA • +1-217-529-6601 • Fax +1-217-529-2827 • [www.bunn.com](http://www.bunn.com)

BUNN® practices continuous product research and improvement. We reserve the right to change specifications and product design without notice. Such revisions do not entitle the buyer to corresponding changes, improvements, additions or replacements for previously purchased equipment.

**All dimensions shown in centimeters.** Bunn Corporation owns all copyrights relating to materials in this publication. Please contact Bunn Corporation to request permission to reproduce any portion of this publication.