

# BUNN®

## 12 Cup Digital Automatic Coffee Brewer with Pourover

ITEM#

PROJECT

DATE



### Model CDBCFFP

(2 top warmers)

(decanters sold separately)

Dimensions: 20.9" H x 8.5" W x 17.8" D  
(53.1cm H x 21.6cm W x 45.2cm D)

### Features

#### Automatic CDBC Coffee Brewers

- Large 200 oz. (5.9 litres) tank provides back-to-back brewing capacity.
- Adjusts automatically to varying water pressure.
- Quicker install saves up to 30 minutes. Pot level, cold brew lock-out and tank temperature set easily from advanced touch pad on front of machine.
- Electronic diagnostics and built in tank drain make service easier.
- Ensures coffee brew quality with cold brew lock out capability.
- SplashGard® funnel deflects hot liquids away from the hand.
- Coffee extraction controlled with pre-infusion or pulse brew and digital temperature control.
- Pourover feature.

For current specification sheets and other information, go to [www.bunn.com](http://www.bunn.com).

### Related Products

#### Easy Clear® EQ-17-TL

Product No. : 30200.1000

Dimensions:

12<sup>7</sup>/<sub>16</sub>" H x 2<sup>1</sup>/<sub>2</sub>" W x 3" D  
31.6 cm H x 6.35 cm W x 7.62 cm D



#### Paper Filter Pack

Product No. : 20115.0000

Packed per case: 1,000

Dimensions: 4<sup>1</sup>/<sub>4</sub>" Base x 2<sup>3</sup>/<sub>4</sub>" Sidewall  
10.8 cm Base x 6.98 cm Sidewall



#### Easy Pour® black decanter

Product No. : 06100.0101

Quantity: 1 (also packaged in quantities of 2, 3, 6, 12, & 24)



#### Easy Pour® orange decanter (for decaf)

Product No. : 06101.0101

Quantity: 1 (also packaged in quantities of 2, 3, 6, 12, & 24)



#### 1GPR SS Portable Server on an RWS1 Warmer

1GPR Product No. : 12487.0001\*

RWS1 Product No. : 12203.0010  
\*Also available with side handles or black decor.



#### Model

CDBCFFP15

#### Agency Listing



E9001.0006B

Patents Apply

3/06

A1.5

## Dimensions & Specifications

| Model               | Product #  | Volts   | Amps              | Tank Heater Watts | Total Watts | Brewing Capacity | Cu. Ft. | Shipping Weight | Cord Attached |
|---------------------|------------|---------|-------------------|-------------------|-------------|------------------|---------|-----------------|---------------|
| CDBCFP15 (2 top)    | 28800.0300 | 120     | 15                | 1425              | 1800        | 4.5 gal./hr.     | 4.3     | 32 lbs.         | Yes           |
| CDBCFP15 (2 top)*   | 28800.0303 | 120     | 15                | 1425              | 1800        | 4.5 gal./hr.     | 4.3     | 33.5 lbs.       | Yes           |
| CDBCP35*            | 28800.0304 | 120/240 | 17.5 <sup>†</sup> | 3500              | 3850        | 7.5 gal./hr.     | 4.0     | 30 lbs.         | No            |
| CDBCFP35*           | 28800.0305 | 120/240 | 17.5 <sup>†</sup> | 3500              | 3850        | 7.5 gal./hr.     | 4.0     | 30 lbs.         | No            |
| CDBCFP20*           | 28800.0309 | 120     | 17.9              | 1800              | 2150        | 5.1 gal./hr.     | 4.0     | 30 lbs.         | No            |
| CDBCP35 (Hi-lime)*  | 28800.0307 | 120/240 | 15.9 <sup>†</sup> | 3500              | 3100        | 7.5 gal./hr.     | 4.3     | 30 lbs.         | No            |
| CDBCFP35 (Hi-lime)* | 28800.0308 | 120     | 15.9              | 1425              | 1800        | 4.5 gal./hr.     | 4.3     | 30 lbs.         | Yes           |

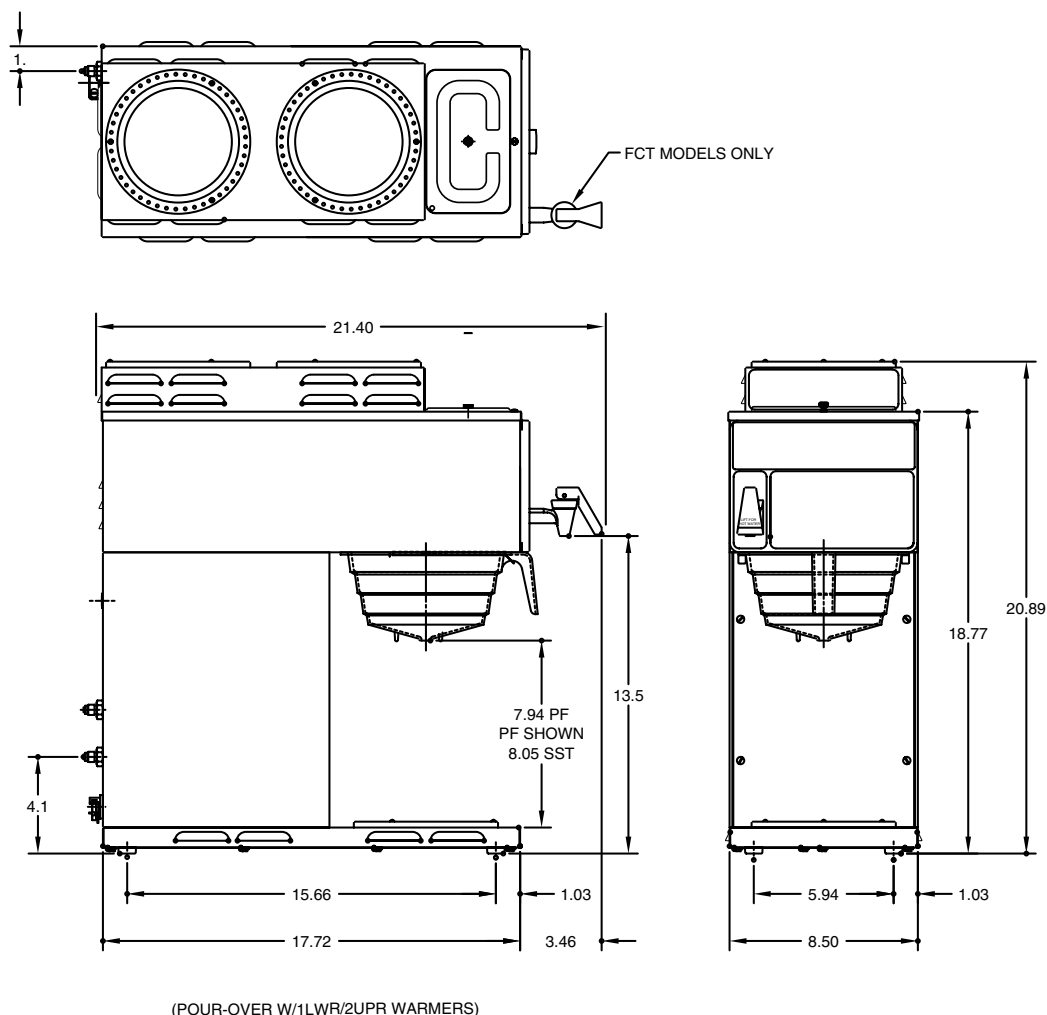
\*Stainless steel funnel. <sup>†</sup>Current at 120/240 Volts

**Brewing capacity:** based upon incoming water temp of 60°F (140°F rise) per 1/2 gallon brew time of 4 minutes.

Models listed as 120/208V or 120/240V must be connected to 208V or 240V electrical service respectively. Please refer to the installation manual.

Electrical: 120 volt, 15 amp. models require 2-wires plus ground service rated 120V, single phase, 60 Hz.

Plumbing: 20-90 psi (138-621 kPa). Machines supplied with 1/4" male flare fitting. Twin models supplied with 3/8" male flare fitting.



BUNN Corporation - 1400 Stevenson Drive Springfield, Illinois 62703 • 800-637-8606 • 217-529-6601 • Fax 217-529-6644 • [www.bunn.com](http://www.bunn.com)

BUNN® practices continuous product research and improvement. We reserve the right to change specifications and product design without notice. Such revisions do not entitle the buyer to corresponding changes, improvements, additions or replacements for previously purchased equipment.

All dimensions shown in inches. Bunn Corporation owns all copyrights relating to materials in this publication. Please contact Bunn Corporation to request permission to reproduce any portion of this publication.