

Features

Gourmet Ice® System

- Two large 3½ gallon hoppers for optimum cooling & serving capacity.
- Engineered for long life with heavy duty motors, compressor, and seals.
- Advanced electronic controls are designed for easy operation and provide perfect ice consistency.
- Full one year parts and labor warranty. See the product manual for additional details.
- All models include timer for automatic night setting.
- 2-year warranty on compressor.
- Sanitation listed by ETL to NSF Standard 18 (includes dairy & alcohol) and safety listed by ETL to UL Standard (UL 471) and CSA Standard (C22.2 No. 120).
- International electrical configurations available.



Model CDS-2*

* International models may vary in appearance.

Related Products

For available variations to some BUNN products, please contact your BUNN sales representative.

BUNN recommends the use of our Easy Clear® Water Quality Systems to assure perfect taste.

Easy Clear® EQ-11-TL

Product No. : 30344.1001

Dimensions:

15⁷/₈" H x 3⁵/₈" W x 4¹⁷/₃₂" D

40.32 cm H x 9.21 cm W x 11.51 cm D



Easy Clear® ED-11-TL

Product No. : 30244.1001

Dimensions:

14³/₁₆" H x 5¹/₁₆" W x 5¹/₁₆" D

31.0 cm H x 12.86 cm W x 12.86 cm D

Autofill System

- Easy to install.
- Completely self-contained and electronically controlled.
- Includes two independent pumps and refill probes.
- Mix range on post-mix model - 1:1 up to 8:1.
- Separate concentrate and water lines to improve sanitation.

AFPO-2 SL Autofill System (Post-Mix)

Product No. : 28400.0004 (Specifications on back)



ITEM#

PROJECT

DATE

International Model

CDSA-2

Model

CDS-2

BUNN®

Corporate Offices
1400 Stevenson Drive
Springfield, Illinois 62703

Phone

800-637-8606

217-529-6601

Fax

217-529-6644

Technical Services

800-286-6070

Internet

<http://www.bunnomatic.com>

Western Regional Office

16431 Carmenita Road,

Cerritos, California 90701

Phone

562-926-0764

Fax

562-926-0858

Canadian Office

280 Industrial Parkway South

Aurora, Ontario, L4G 3T9

Phone

905-841-2866

Fax

905-841-2775

Patents
Apply



Dimensions & Specifications

Model	Product #	Volts	Amps	Capacity	Cu Ft.	Shipping Weight	Cord Attached
CDS-2 (White/Stainless)	27000.0004	120	9.5	2 hoppers @ 3½ gal. each	21.6	144 lbs. (65.5 kg)	Yes
CDS-2 (White/Stainless) †	27000.0015	120	9.5	2 hoppers @ 3½ gal. each	21.6	144 lbs. (65.5 kg)	Yes
CDS-2 (All Black)	27000.0021	120	9.5	2 hoppers @ 3½ gal. each	21.6	144 lbs. (65.5 kg)	Yes
CDS-2 (Black/Stainless)	27000.0027	120	9.5	2 hoppers @ 3½ gal. each	21.6	144 lbs. (65.5 kg)	Yes
CDS-2 (Black tray)* †	27000.0029	120	9.5	2 hoppers @ 3½ gal. each	21.6	144 lbs. (65.5 kg)	Yes
CDS-2 (Flat lid)*	27000.0032	120	9.5	2 hoppers @ 3½ gal. each	21.6	144 lbs. (65.5 kg)	Yes
AFPO-2 SL (post-mix)	28400.0004	120	4	108 oz./minute	2.7	35 lbs. (15.9 kg)	Yes
Autofill Hopper Only	28079.1001	n/a	n/a	3½ gallons	2.6	8 lbs. (3.6 kg)	n/a

*Model is white and stainless. †Model comes with Autofill-ready hoppers.

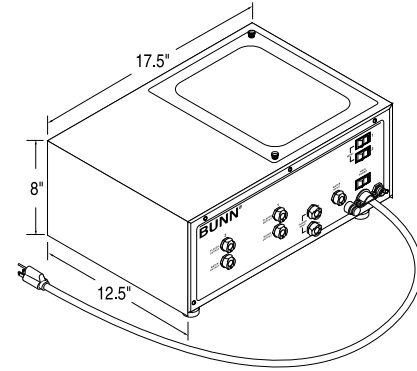
CDS-2 (All Models)

Electrical: Models require 2-wires plus ground service rated 120V, single phase, 60 Hz.

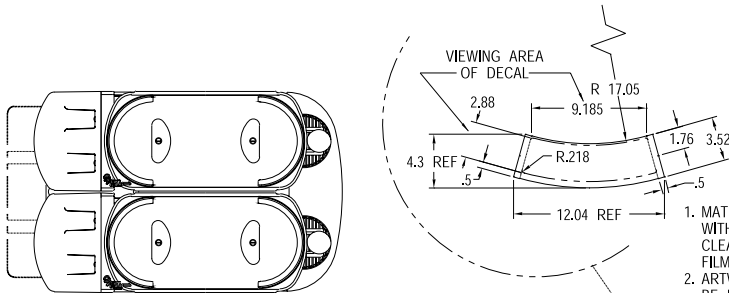
AFPO-2 SL

Electrical: Models require 2-wires plus ground service rated 120V, single phase, 60 Hz.

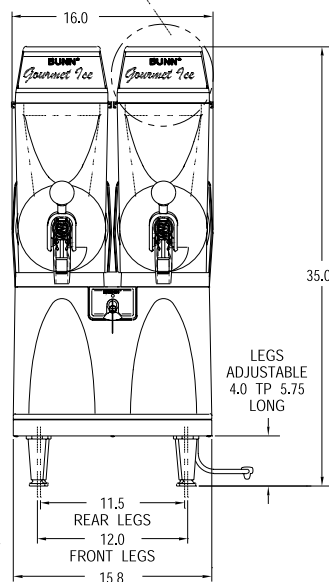
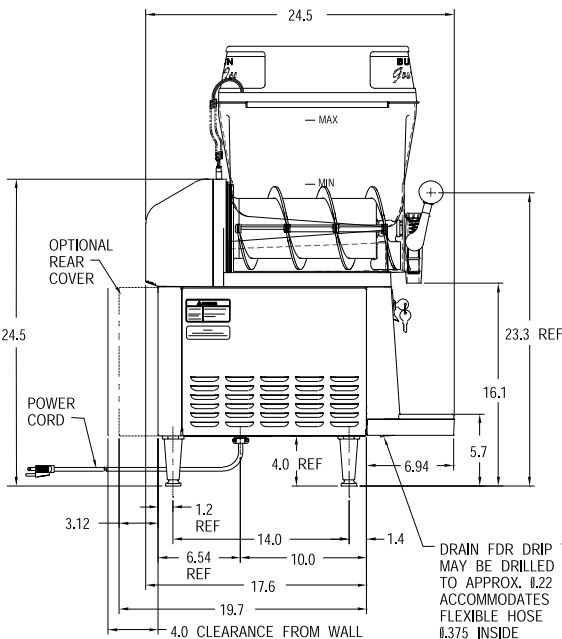
Plumbing: 20-90 psi (138-621 kPa). Machine supplied with ¼" male flare fitting.



AFPO-2 SL



1. MATERIAL: .030 POLYCARBONATE WITH HARD COAT - GE HP92 CLEAR LEXAN. PROTECTIVE FILM OVER HARD COAT.
2. ARTWORK AND DIECUT TO BE REGISTERED AS SHOWN.
3. SECOND SURFACE PRINTED.



Model CDS-2 (Flat lid)

