

Liquid Coffee Ambient Dispenser with 2 heads

ITEM#

PROJECT

DATE



LCA-2

Dimensions: 30" H x 12.2" W x 24.9" D
(76.2 cm H x 31 cm W x 63.3 cm D)

Features

Liquid Coffee Ambient Dispenser

- Attractive appearance and narrow 12" (30.5 cm) width.
- Accommodates all ½ gallon (1.9 litre) and most 1 gallon (3.8 litre) bag-in-box (BIB) containers.
- Insulated product cabinet assures maximum product life.
- Refill or rinse LED lights alert the operator when more concentrate or cleaning is needed.
- FlavorGard™ technology continuously monitors extract-to-water ratio and assures flavor consistency.
- Easy-to-program, one-touch portion control model is available for self-serve applications.
- Hot water dispenser.



LCA-2, PC

*LCA is also available
with portion control*

For current specification sheets and other information, go to www.bunn.com.

International models may vary in appearance.

Related Products

Easy Clear® EQHP-10
Product No.: 39000.0004

Easy Clear® EQHP-10L
Product No. : 39000.0001

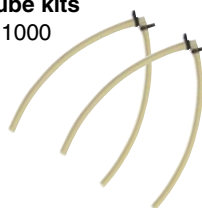
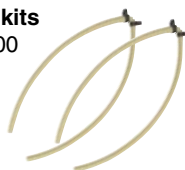
Easy Clear® EQHP-25
Product No. : 39000.0005

Easy Clear® EQHP-25L
Product No. : 39000.0002



1/8" Replacement tube kits
Product No. : 34728.1000

3/16" Replacement tube kits
Product No. : 34727.1000



Scholle BIB connector
Product No. : 35057.0000



**LiquiBox QC/D II
BIB connector**
Product No. : 35055.0000

50ml Graduated Cylinder Kit
Product No. : 34843.1000
For use in calibration of pumps.



Dimensions & Specifications

Model	Product Number	Dispense Rate/Sec.		Connector Type	Volts	Amps	Heater Watts	Capacity**	Shipping Weight	Cord Attached	Agency
		1.8 oz.	2.5 oz.*								
Product Ratios											
LCA-2A	34400.0009	45:1-100:1	65:1-100:1	1/8 tube Scholle	230	16	3700	313 cups/hr. (74 L/hr.)	83 lbs. (37.2 kg)	No	☪☪
LCA-2A	34400.0010	25:1-45:1	25:1-65:1	3/16 tube Scholle	230	20	3700	313 cups/hr. (74 L/hr.)	83 lbs. (37.2 kg)	No	☪☪
LCA-2A	34400.0013	45:1-100:1	65:1-100:1	1/8 tube Scholle	230	30	5500	470 cups/hr. (111.1 L/hr.)	83 lbs. (37.2 kg)	No	☪☪
LCA-2A	34400.0014	25:1-45:1	25:1-65:1	3/16 tube Scholle	230	30	5500	470 cups/hr. (111.1 L/hr.)	83 lbs. (37.2 kg)	No	☪☪
LCA-2A, PC	36500.0009	45:1-100:1	65:1-100:1	1/8 tube Scholle	230	20	3700	313 cups/hr. (74 L/hr.)	83 lbs. (37.2 kg)	No	☪☪
LCA-2A, PC	36500.0010	25:1-45:1	25:1-65:1	3/16 tube Scholle	230	20	3700	313 cups/hr. (74 L/hr.)	83 lbs. (37.2 kg)	No	☪☪
LCA-2A, PC	36500.0013	45:1-100:1	65:1-100:1	1/8 tube Scholle	230	30	5500	470 cups/hr. (111.1 L/hr.)	83 lbs. (37.2 kg)	No	☪☪
LCA-2A, PC	36500.0014	25:1-45:1	25:1-65:1	3/16 tube Scholle	230	30	5500	470 cups/hr. (111.1 L/hr.)	83 lbs. (37.2 kg)	No	☪☪

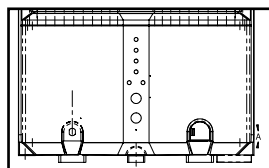
***Unit shipped with dispense rate set at 1.8 oz./sec. Dispense rate increases to 2.5 oz./sec. if restrictor plug is removed.**

****Capacity measured with a 5 oz. cup.**

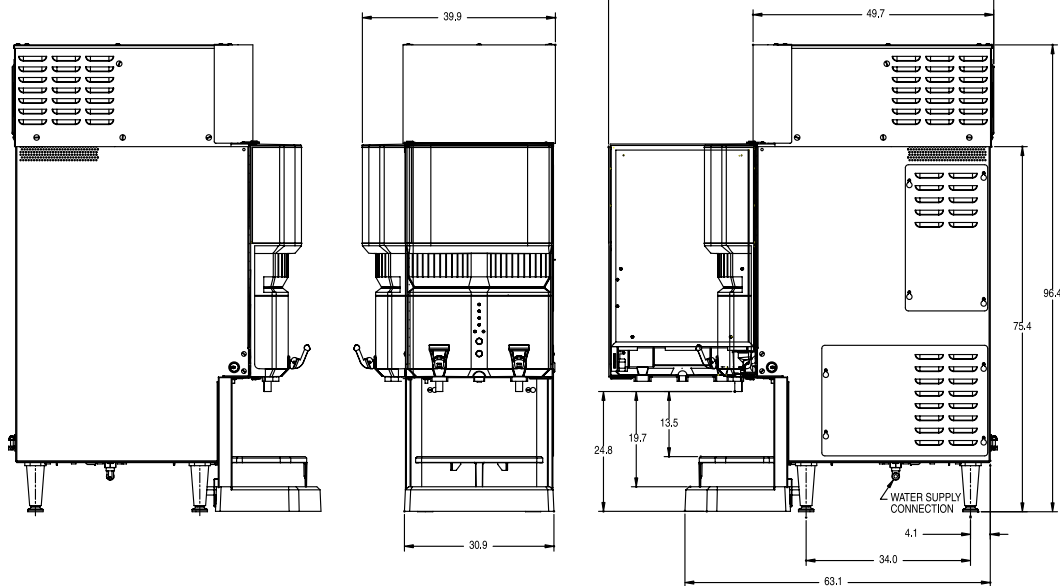
Brewing capacity: based upon incoming water temp of 60°F/15°C (140°F/60°C rise) per 1/2 gallon (1.89 litre) brew time of 4 minutes.

Electrical: Models require 2-wires plus ground service rated 220-240V, single phase, 50/60 hz.

Plumbing: 20-90 psi (138-621 kPa) from a 3/8" or larger supply line. Unit requires a 2.2 gpm line flow capacity. A shut-off valve should be installed in the line before the unit. Install a regulator in line when pressure is greater than 90 psi to reduce pressure to 50 psi. Supplied with 3/8" male flare fitting.



LCA-2 with portion control.



Bunn-O-Matic® Corporation - 1400 Stevenson Drive Springfield, Illinois 62703 • USA • +1-217-529-6601 • Fax +1-217-529-2827 • www.bunn.com

BUNN® practices continuous product research and improvement. We reserve the right to change specifications and product design without notice. Such revisions do not entitle the buyer to corresponding changes, improvements, additions or replacements for previously purchased equipment.

All dimensions shown in centimeters. Bunn-O-Matic Corporation owns all copyrights relating to materials in this publication. Please contact BUNN to request permission to reproduce any portion of this publication.