


# iMIX® Dispensers with 3 Hoppers



iMIX-3 PC

*Sleek, eye-catching powdered beverage dispenser featuring advanced mixing technology delivers exceptional hot drinks*

## iMIX 3

- Three, 3.6 kg hoppers
- Lighted front graphics for merchandising.
- Large 16.66 litre hot water tank.
- Cup clearance of 18.4 cm.
- High speed, heavy-duty whipper for complete product mixing.
- Front of machine access for easy service, set up and calibration.
- Variable speed motors allow control of product consistency (.75 to 6.6 grams of powder per second).
- Low powder product detection system.\*\*
- Alphanumeric display in English and Spanish.\*
- Spring-loaded, all metal auger drive system for easy hopper installation.
- RPM feedback.\*\* 

\*Available only on iMIX-3 and iMIX-3S+.

\*\*Available only on iMIX-3.

## iMIX-3S+

- Can be set as push and hold or single size portion control.
- Alphanumeric display allows adjustments and service operational testing from front of machine. Also communicates advertising messages, machine status and technical support contact information.

## RELATED PRODUCTS

### EQHP-10

Product No.: 39000.0004

### EQHP-10L

Product No.: 39000.0001

### Inlet Hose Assembly

Product No.: 32865.0001

### Chai Display

Product No.: 37457.0001

### Steamer Display

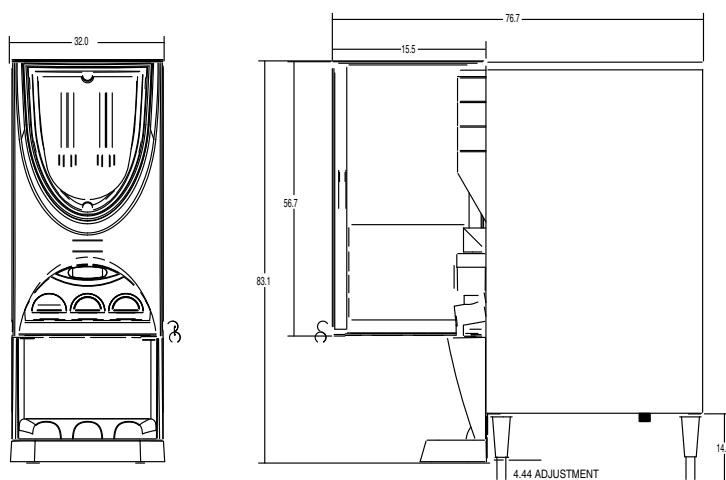
Product No.: 37457.0003

### Hot Chocolate Display

Product No.: 37457.0002



iMIX-3S+



Product #	Description	Weight	Volts	Amps	Watts	Hertz	Phase	Cord	Agency
36900.0014	iMIX-3A, portion control	40.8 kg	230	15	3600	50	I	No	CE
36900.0027	iMIX-3B, portion control, non-lighted display		200	12.7	2530	50/60			
38600.0004	iMIX-3S+A, pushbutton		230	15	3600	50			CE

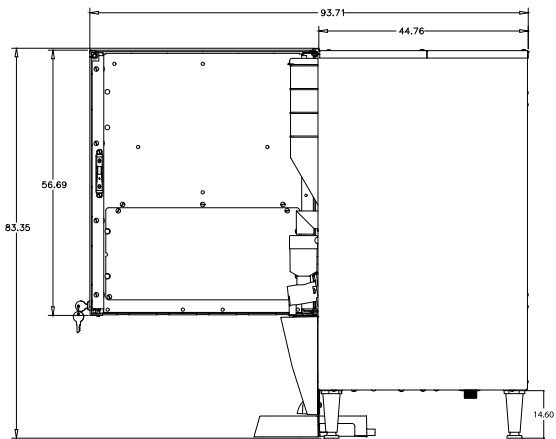
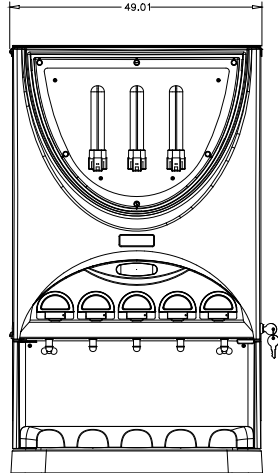
Plumbing: 138-624 kPa. Machine supplied with 1/4" male fitting. All plumbed models that are CE listed feature backflow prevention.

Dimensions shown in centimetres For capacities, additional specs, manuals, care & cleaning, visit [www.bunn.com](http://www.bunn.com).

# iMIX<sup>®</sup> Dispensers with 4 and 5 Hoppers



iMIX-4 PC



*Sleek, eye-catching powdered beverage dispenser featuring advanced mixing technology delivers exceptional hot drinks*

## iMIX-4 FEATURES

- Four, 3.6 kg hoppers
- Lighted front graphics for merchandising.
- Large 27.63 litre hot water tank.
- Cup clearance of 18.4 cm.
- Variable speed motors allow control of product consistency in mixing chamber (.75 to 6.6 grams of powder per second).
- High speed, heavy-duty whipper.
- Front of machine access for easy service, set up and calibration.
- Spring-loaded, all metal auger drive system for easy hopper installation.
- Low powder product detection system.
- Digital technology adds night mode to prevent pilferage.
- Alphanumeric display in English and Spanish.
- RPM feedback.
- Key service components easily accessible through front, top and side.

## iMIX-5S+ FEATURES

- Large 26.5 litre hot water tank.
- Can be set as push and hold or single size portion control.
- Night mode to prevent pilferage.
- Alphanumeric display in English and Spanish.

## RELATED PRODUCTS

**EQHP-10**  
Product No.: 39000.0004

**EQHP-10L**  
Product No.: 39000.0001

**Inlet Hose Assembly**  
Product No.: 32865.0001



**NOTE:** Catalog icon legend can be found on page 1.



iMIX-5S+

Product #	Description	Weight	Volts	Amps	Watts	Hertz	Phase	Cord	Agency
37000.0009	iMIX-4A, portion control	59.9 kg	230	15	3600	50	I	No	
38100.0005	iMIX-5S+A, pushbutton	60 kg	230		3600	50			

Plumbing: 138-621 kPa. Machine supplied with 1/4" male fitting. All plumbed models that are CE listed feature backflow prevention.

# Fresh Mix Dispensers with 1 and 2 Hoppers



FMD-2

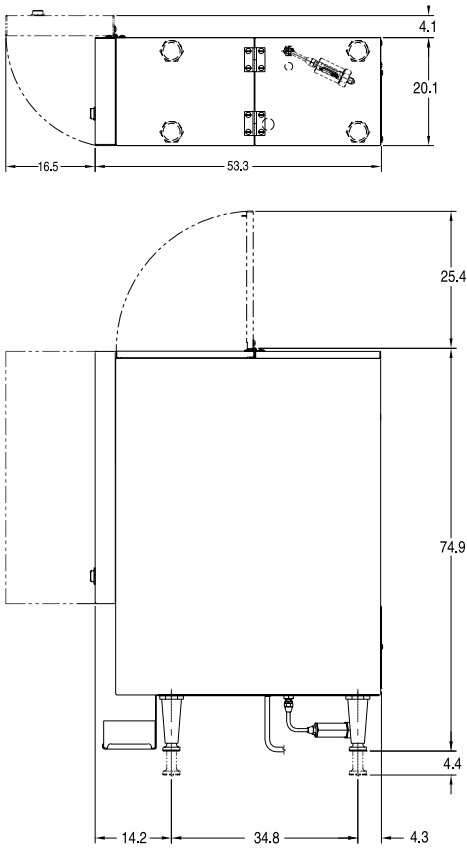
- Capacity:  
FMD-1: One, 3.6 kg hopper  
FMD-2: Two, 1.81 kg hoppers
- Variable speed hopper motor offers a wide range of product mix ratios (1.5 to 12 grams of powder per second).
- Lighted graphics merchandise drinks for maximizing profits.
- Large hot water reservoir provides 15.9 litre/hour serving capacity.
- Adjustable legs and drip tray allow up to 17.8 cm opening for serving cup.
- Specially designed mixing system delivers perfect beverages every time.
- Improved automatic rinse reduces run-on after beverage is dispensed.

### RELATED PRODUCTS

**EQHP-10**  
Product No.: 39000.0004

**EQHP-10L**  
Product No.: 39000.0001

**Inlet Hose Assembly**  
Product No.: 32865.0001



FMD-1

Product #	Description	Weight	Volts	Amps	Watts	Hertz	Phase	Cord	Agency
SET00.0250	FMDA-1, black	34 kg	230	7.8	1800	50	1	Yes	CE
SET00.0252	FMDA-2, black	36.7 kg							

Plumbing: 138-690 kPa. Machine supplied with 1/4" male fitting. All plumbed models that are CE listed feature backflow prevention.

Dimensions shown in centimetres For capacities, additional specs, manuals, care & cleaning, visit [www.bunn.com](http://www.bunn.com).

# Fresh Mix Dispensers with 3 Hoppers



FMD-3 DBC

- Three 1.81 kg hoppers.
- Variable speed hopper motors offer control of product consistency.
- Lighted graphics for merchants.
- Adjustable legs and drip tray allow up to 17.8 cm opening for serving cup.
- Specially designed mixing system delivers perfect beverages every time.
- Improved automatic rinse reduces run-on after beverage is dispensed.

## FMD DBC DISPENSER

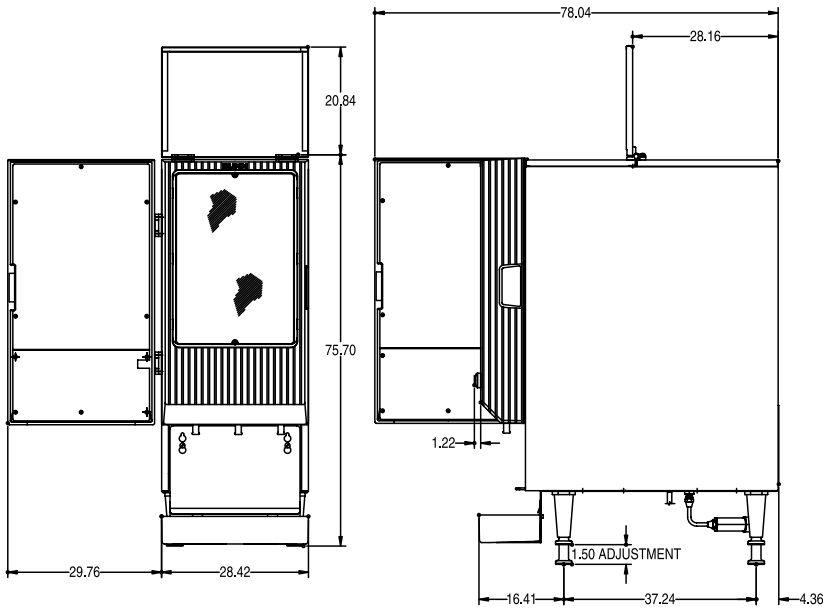
- Easy-to-program, one-touch portion control for three cup sizes.
- Fast fill - perfect for quick service applications.
- Each mixing chamber has independent powder to water ratio.
- System setup is password protected for safety and security.
- Simple setup and hopper throw calibration system.
- Hot water dispense.

## RELATED PRODUCTS


**EQHP-10**  
Product No.: 39000.0004

**EQHP-10L**  
Product No.: 39000.0001

**Inlet Hose Assembly**  
Product No.: 32865.0001



FMD-3

Product #	Description	Weight	Volts	Amps	Watts	Hertz	Phase	Cord	Agency
28200.0048	FMDA-3, stainless steel	39.9 kg	230	15	3600	50/60	I	Yes	
29250.0010	FMDA-3 DBC, hot water dispense	39.9 kg	230		3600	50/60			
SET00.0174	FMDA-3 DBC, hot water disp., German literature								

Plumbing: 138-621 kPa. Machine supplied with 1/4" male fitting. All plumbed models that are CE listed feature backflow prevention.

Dimensions shown in centimetres For capacities, additional specs, manuals, care & cleaning, visit [www.bunn.com](http://www.bunn.com).

# Fresh Mix Dispensers with 5 Hoppers



FMD-5

- Five 1.8l kg hoppers.
- Variable speed hopper motors offer a wide range of product mix ratios (1.5 to 12 grams of powder per second).
- Lighted graphics.
- Adjustable legs and drip tray allow up to 17.8 cm opening for serving cup.
- Specially designed mixing system delivers perfect beverages every time.
- Improved automatic rinse reduces run-on after beverage is dispensed.
- Electrical and plumbing components easily accessible through front and top.

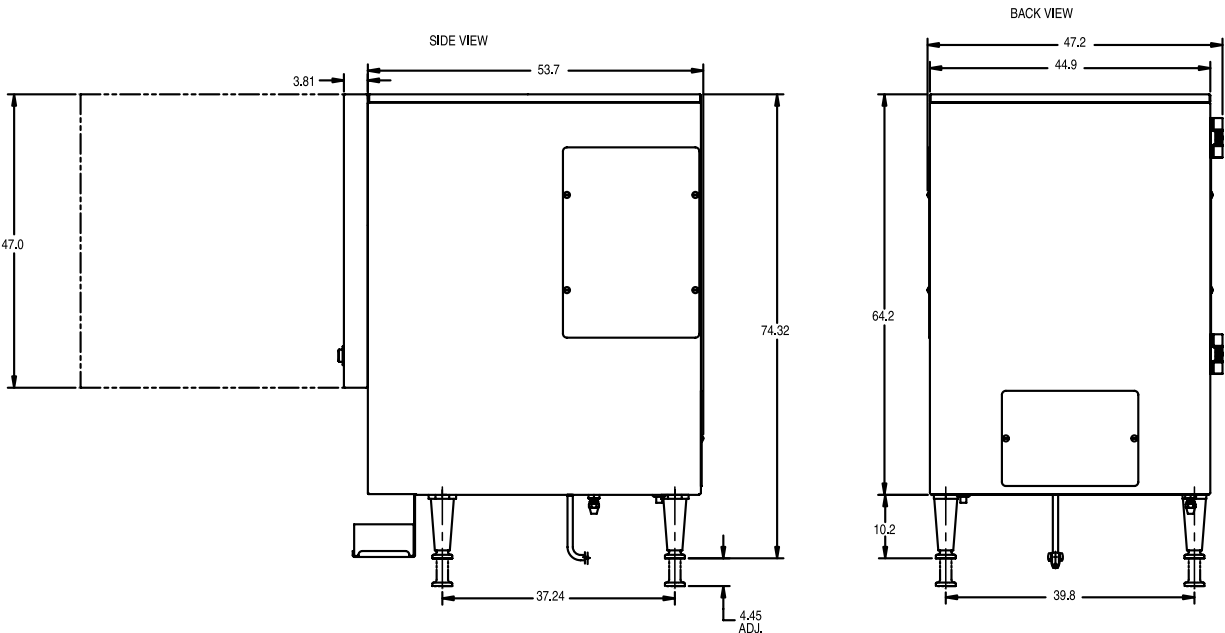
### RELATED PRODUCTS

**EQHP-10**  
Product No.: 39000.0004



**EQHP-10L**  
Product No.: 39000.0001

**Inlet Hose Assembly**  
Product No.: 32865.0002



Product #	Description	Weight	Volts	Amps	Watts	Hertz	Phase	Cord	Agency
34900.0010	FMD-5A, push-hold	53.5 kg	230	15	3600	50/60	I	Yes	CE

Plumbing: 138-621 kPa. Machine supplied with 3/8" male fitting. All plumbed models that are CE listed feature backflow prevention.

Dimensions shown in centimetres For capacities, additional specs, manuals, care & cleaning, visit [www.bunn.com](http://www.bunn.com).