

## Twin Airpot Coffee Brewer

### Features

#### Twin Airpot Coffee Brewer

- Brews directly into 1.9 to 3 litre airpots.
- Twin brew head system.
- Hot water faucet.
- Convenient airpots keep coffee hot and fresh for hours.
- Airpots are easily transported to remote meeting rooms, breakfast bars, etc.
- Digital timer enables users to make brew cycle adjustments from the front panel.
- Pourover feature on both sides.
- Gourmet funnel allows heavier throw weights of coffee, SplashGard<sup>®</sup> feature deflects hot liquids away from the hand.
- Brew capacity varies. See back for details.



#### CWTF Twin APS with Airpots

(airpots sold separately)

Dimensions: 23.5" H x 16" W x 19.7" D  
(59.7cm H x 40.6cm W x 50.0cm D)

For current specification sheets and other information, go to [www.bunn.com](http://www.bunn.com).

International model may vary in appearance.

### Related Products

**Easy Clear<sup>®</sup> EQHP-10**  
Product No. : 39000.0004

**Easy Clear<sup>®</sup> EQHP-10L**  
Product No. : 39000.0001

**Paper Filter Pack**  
Product No. : 20100.0000



**2.2 liter Push-Button Airpot**  
Product No. : 28696.0002

**2.5 liter Push-Button Airpot**  
Product No. : 13041.0001

**2.5 liter Lever-Action Airpot**  
Product No. : 32125.0000

**3.0 liter Lever-Action Airpot**  
Product No. : 32130.0000



**Universal Airpot Racks**  
for push-button and lever-  
action airpots.



## Dimensions & Specifications

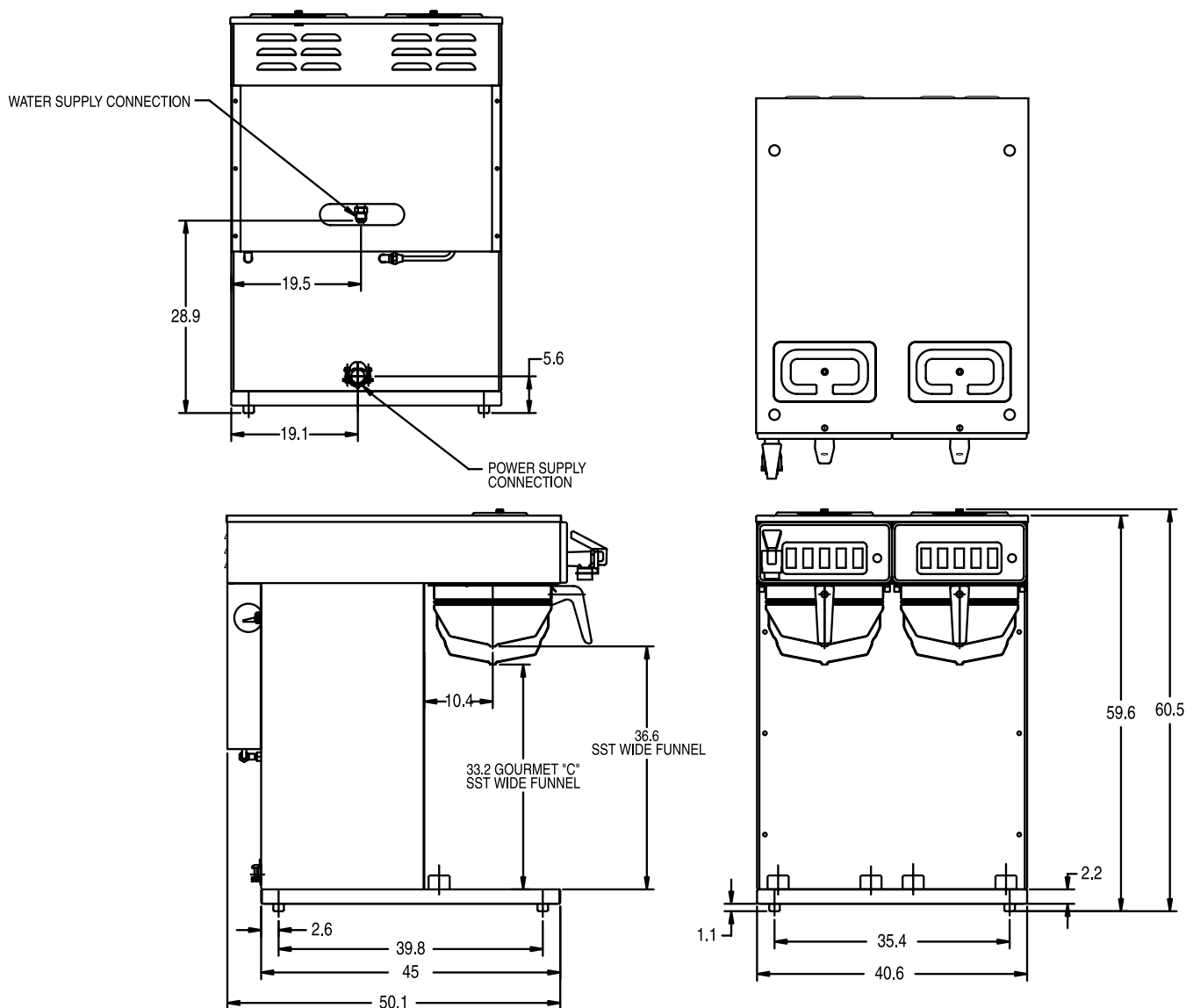
Model	Product #	Volts	Amps	Tank Heater Watts	Total Watts	Brewing Capacity	Shipping Weight	Cord Attached	Agency
CWTF Twin APS	23400.0044	230	24	2 @ 3000	5500	13.7 gal./hr. (51.8 L./hr.)	64 lbs. (29.1 kg)	Yes	CE (NSF)

*Airpots not included.*

**Brewing capacity:** based upon incoming water temp of 60°F/15.5°C (140°F/60°C rise) per 1/2 gallon brew time of 4 minutes.

**Electrical:** Model requires 2-wires plus ground service rated 220-240V, single phase, 50/60Hz.

**Plumbing:** 20-90 psi (138-621 kPa). Machine supplied with 3/8" male flare fitting.



Bunn-O-Matic® Corporation - 1400 Stevenson Drive Springfield, Illinois 62703 • USA • +1-217-529-6601 • Fax +1-217-529-2827 • [www.bunn.com](http://www.bunn.com)

BUNN® practices continuous product research and improvement. We reserve the right to change specifications and product design without notice. Such revisions do not entitle the buyer to corresponding changes, improvements, additions or replacements for previously purchased equipment.

**All dimensions shown in centimeters.** Bunn-O-Matic Corporation owns all copyrights relating to materials in this publication. Please contact BUNN to request permission to reproduce any portion of this publication.