

BUNN®

Dual® Brewer with Portable Server

ITEM#

PROJECT

DATE



Model Dual with two 1.5GPR's

Dimensions: 29.3" H x 18" W x 19.3" D
(74.4cm H x 45.7cm W x 49cm D)

Features

Dual Coffee Brewer

- Brews 16.3 to 18.9 gallons (61.7 to 71.5 litres) of perfect coffee per hour.
- Brews ½, 1, or 1½ gallon (1.9, 3.8 and 5.7 litre) batches.
- Adjustable bypass ensures perfect coffee regardless of batch size.
- Hot water faucet does not affect brew level.
- Electronic timer ensures fast set up and accurate brew levels.
- Electronic grinder interface instructs grinder on exact amount of coffee for selected brew batch size.
- 1.5GPR portable server (included) has a patented Safety-Fresh® brew-through lid with vapor seal and spill protection.
- SplashGard® funnel deflects hot liquids away from the hand.
- International electrical configurations available.

For current specification sheets and other information, go to www.bunn.com.

Related Products

Easy Clear® EQHP-25L
Product No. : 39000.0002



Easy Clear® EQHP-25
Product No. : 39000.0005

Single/Dual Filter Pack
Product No. : 20138.0000
Packed per case: 500



1.5GPR
Product No. : 20950.0004



Dual Drip Tray Kit
Product No.: 20213.0101



RWS1
Product No. : 12203.0010



RWS1 Drip Tray
Product No. : 20213.0103



Model

Dual

Agency Listing



Patents Apply

9/08

A2.4

Dimensions & Specifications

Model	Product #	Volts	Amps	Tank Heater Watts	Total Watts	Thermostat	Brewing Capacity	Cu. Ft.	Shipping Weight	Cord Attached
Dual†*	20900.0008	120/208	28.8	2 @ 2850	5990	Mechanical	16.3 gal./hr.	11.8	92 lbs.	No
Dual†*	20900.0010	120/208	28.6	2 @ 2850	5990	Mechanical	16.3 gal./hr.	11.8	94 lbs.	No
Dual**	20900.0011	120/240	29	2 @ 3300	6890	Mechanical	18.9 gal./hr.	11.8	95 lbs.	No

All include Safety-Fresh® server with additional orange faucet handle and decal for decaf service.

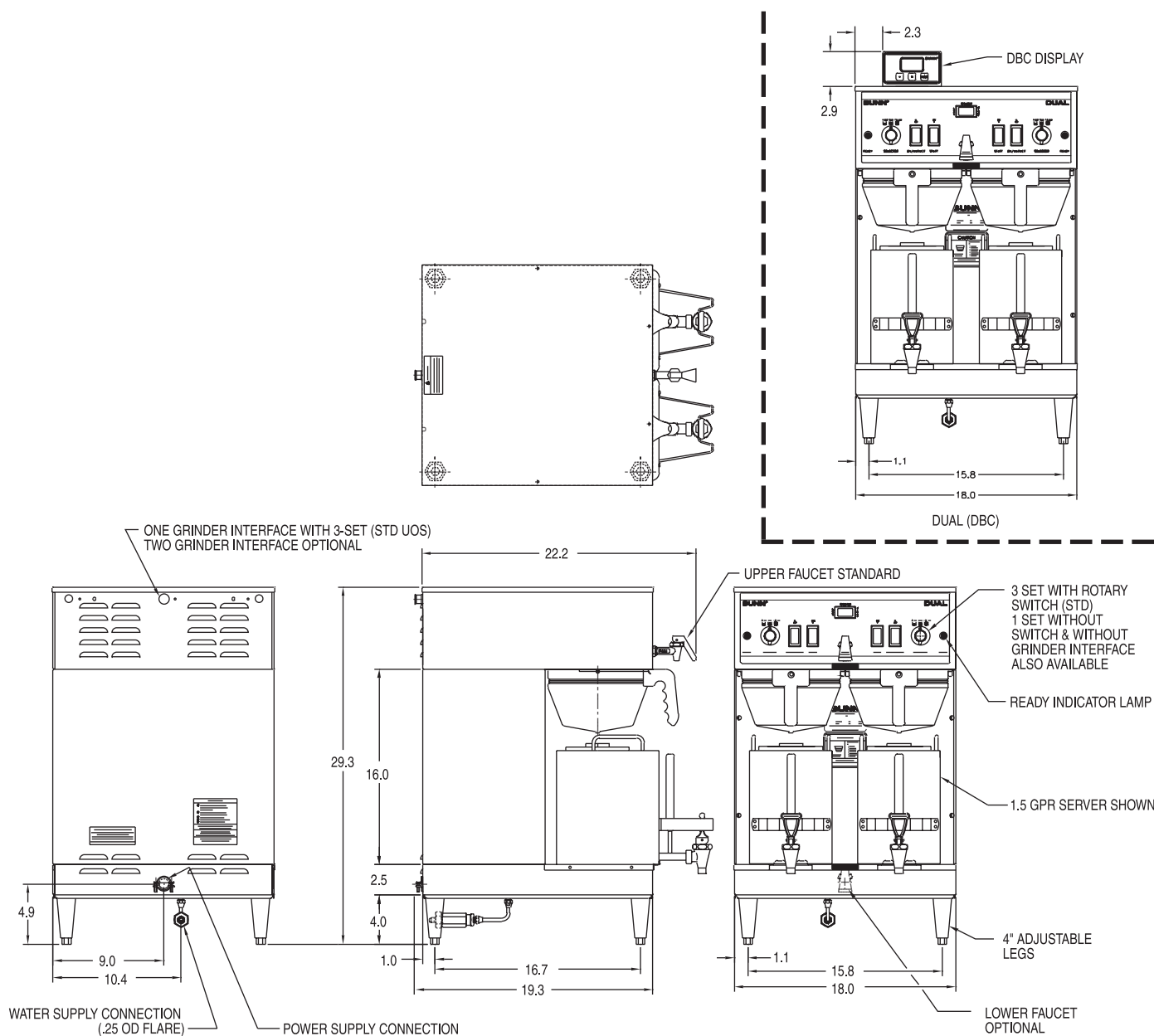
† Plastic funnel. *One setting. ** Three settings.

Brewing capacity: based upon incoming water temp of 60°F (140°F rise).

Models listed as 120/208V or 120/240V must be connected to 208V or 240V electrical service respectively. Please refer to the installation manual.

Electrical: 120/208V or 120/240V models require 3-wires plus ground service rated 120/208V or 120/240V, single phase, 60 Hz.

Plumbing: 20-90 psi (138-621 kPa). Supplied with ¼" male flare fittings. Tank capacity: 8.4 gallons (31.8 L)



Bunn-O-Matic® Corporation - 1400 Stevenson Drive Springfield, Illinois 62703 • 800-637-8606 • 217-529-6601 • Fax 217-529-6644 • www.bunn.com

BUNN® practices continuous product research and improvement. We reserve the right to change specifications and product design without notice. Such revisions do not entitle the buyer to corresponding changes, improvements, additions or replacements for previously purchased equipment.

All dimensions shown in inches.

9/08 © Bunn-O-Matic Corporation