

Dual Brewer with Portable Server

ITEM# _____

PROJECT _____

DATE _____



Model Dual®
includes two 1.5GPR's*
Dimensions: 29.3" H x 18" W x 19.3" D
(74.4cm H x 45.7cm W x 49cm D)

Features

Dual Coffee Brewer

- Brews 16.3 to 18.9 gallons (61.7 to 71.5 liters) of perfect coffee per hour.
- Brews ½, 1, or 1½ gallon (1.9, 3.8 and 5.7 liter) batches.
- Adjustable bypass ensures perfect coffee regardless of batch size.
- Hot water faucet does not affect brew level.
- Electronic timer ensures fast set up and accurate brew levels.
- Electronic grinder interface instructs grinder on exact amount of coffee for selected brew batch size.
- 1.5GPR portable server (included) has a patented Safety-Fresh® brew-through lid with vapor seal and spill protection.
- SplashGard® funnel deflects hot liquids away from the hand.
- International electrical configurations available.

For current specification sheets and other information, go to www.bunn.com.

**International models may vary in appearance.*

Related Products

Easy Clear® EQHP-25L
Product No. : 39000.0002



Gourmet Filter Pack
Product No. : 20138.0000
Packed per case: 500



1.5 GPR
Product No. : 20950.6004



Easy Clear® EQHP-25
Product No. : 39000.0005

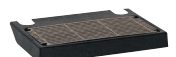
Dual Drip Tray Kit
Product No. : 20213.0101



RWS1
Product No. : 12203.6001



RWS1 Drip Tray
Product No. : 20213.0103



Model

Agency Listing

Dual



Dimensions & Specifications

CANADA



| Model | Product # | Volts | Amps | Tank Htr Watts | Total Watts | Thermostat | Capacity per hour | Cubic ft ³ /m ³ | Weight lbs/kg | Cord Attached |
|--------|------------|---------|------|-------------------|----------------|------------|----------------------|--|------------------|------------------|
| Dual** | 20900.6007 | 120/208 | 28.8 | 2 @ 2850 | 6000 | Mechanical | 16.3 gal/61.77liter | 10.7 / .30 | 94 / 42.6 | No |
| Dual** | 20900.6010 | 120/240 | 28.7 | 2 @ 3300 | 6890 | Mechanical | 18.9 gal/71.63 liter | 10.7 / .30 | 94 / 42.6 | No |

All include Safety-Fresh® server with additional orange faucet handle and decal for decaf service.

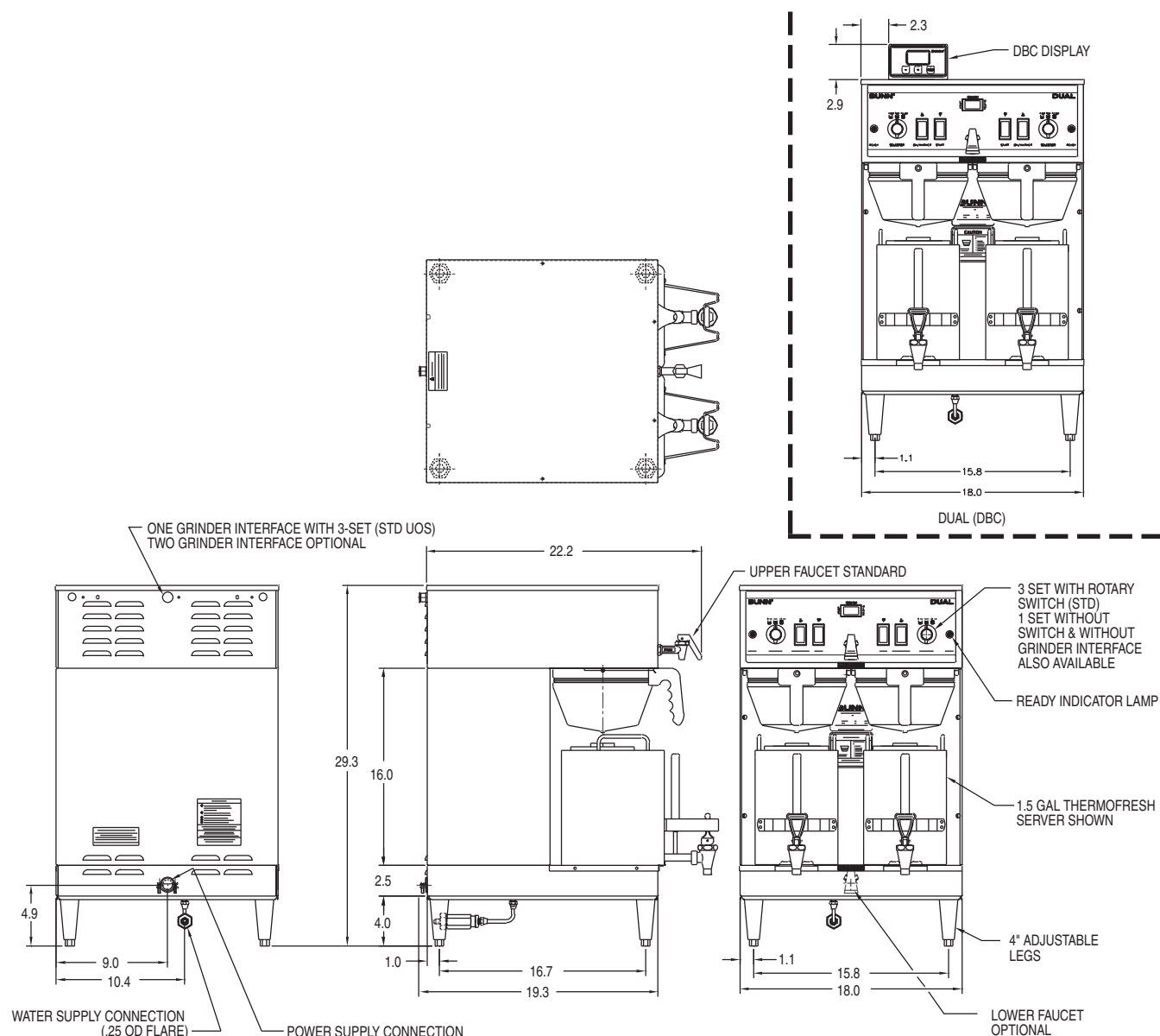
** Three settings.

Models listed as 120/208V or 120/240V must be connected to 208V or 240V electrical service respectively. Please refer to the installation manual.

Brewing capacity: based upon incoming water temp of 60°F (140°F rise).

Electrical: 120/208V or 120/240V models require 3-wires plus ground service rated 120/208V or 120/240V, single phase, 60 Hz.

Plumbing: 20-90 psi (138-621 kPa). Supplied with ¼" (6.4 mm) male flare fittings.



Bunn-O-Matic Corporation of Canada - 280 Industrial Pkwy. S. Aurora, Ontario L4G 3T9 • 905-841-2866 • Fax 905-841-2775 • www.bunn.com

BUNN® practices continuous product research and improvement. We reserve the right to change specifications and product design without notice. Such revisions do not entitle the buyer to corresponding changes, improvements, additions or replacements for previously purchased equipment.

All dimensions shown in inches. Bunn Corporation owns all copyrights relating to materials in this publication. Please contact Bunn Corporation to request permission to reproduce any portion of this publication.