

Dual Soft Heat® Brewer with Docking System

ITEM#

PROJECT

DATE



Model Dual SH
Shown with
1.5 gallon SH Servers*
(servers sold separately)

Dimensions: 35.8" H x 18" W x 20.5"D
(91cm H x 45.7cm W x 52.1cm D)

Features

Coffee brewers with portable servers

- Brews 16.3 to 18.9 gallons (61.7 to 71.5 liters) of perfect coffee per hour.
- Brews ½, 1, or 1½ gallon (1.9, 3.8 or 5.7 liter) batches.
- Patented server heat control automatically shuts off once target temperature is reached. Can be set to 175°–190°F (79.4–87.8°C).
- Electronic grinder interface instructs grinder on exact amount of coffee for selected brew batch size.
- Remote 1 or 2 server docking stations for additional satellite coffee serving.
- Safety-Fresh® patented brew-through lid with vapor seal and spill prevention.
- Variable batch selector knob lets you brew large batches or small servings.
- International electrical configurations available.

For current specification sheets and other information, go to www.bunn.com.

** International models may vary in appearance.*

Related Products

Easy Clear® EQHP-25L
Product No. : 39000.0002



Easy Clear® EQHP-25
Product No. : 39000.1002

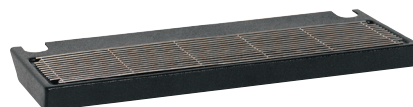
Single/Dual Filter Pack
Product No. : 20138.0000
Packed per case: 500
Dimensions:
5¼" Base x 4¼" Sidewall
13.3 cm Base x 10.8 cm Sidewall



1.5 Gal. SH Server
Product No.: 27850.6001



Two Position Drip Tray
Product No.: 27150.0000



2SH Stand
Product No.: 27875.6000



Model

Agency Listing

Dual SH



Dimensions & Specifications

CANADA



Model	Product #	Volts	Amps	Tank Htr Watts	Total Watts	Capacity per hour	Cubic ft ³ /m ³	Weight lbs. / kg.	Cord Attached
Dual SH Brewer	27900.6001	120/208	28.9	2@2850	5900	16.3 gal/61.77 liter	13.3 / .37	90 / 40.8	No
Dual SH Brewer	27900.6002	120/240	29.1	2@3300	6800	18.9 gal/71.63 liter	13.3 / .37	90 / 40.8	No
SH Server(1.5 gal.)	27850.6001	n/a	n/a	n/a	n/a	1.5 gal/5.68 liter	2.4 / 0.7	18 / 8.2	No
1SH Stand	27825.6000	120	.8	n/a	90	1 SH Server	1.2 / .04	13 / 5.9	Yes
2SH Stand	27875.6000	120	1.5	n/a	180	2 SH Servers	2.1 / 0.6	22 / 10.0	Yes

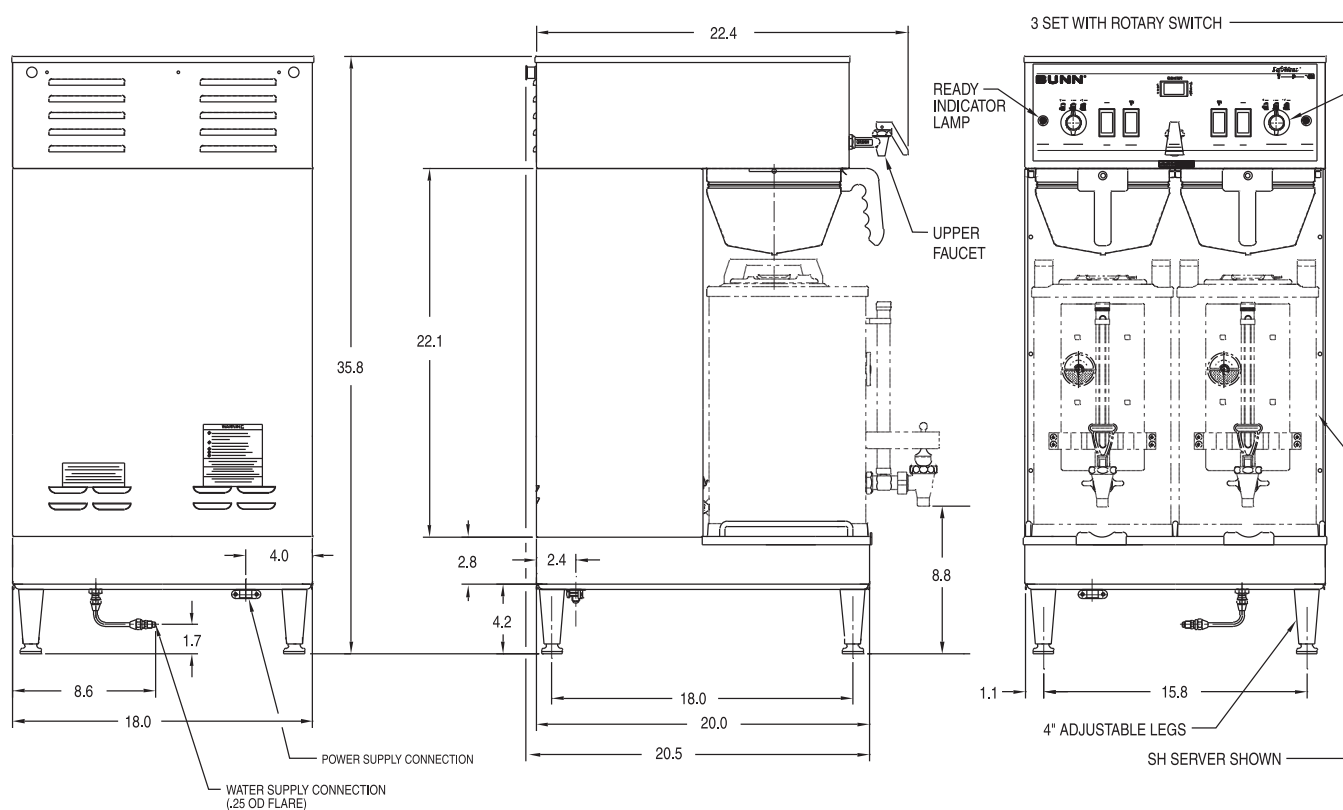
Note: Soft Heat® Brewers and Servers are boxed and shipped separately. All brewers have mechanical thermostats.

* **Brewing capacity:** based upon incoming water temp of 60°F (140°F rise) per ½ gallon brew time of 4 minutes.

Models listed as 120/208V or 120/240V must be connected to 208V or 240V electrical service respectively. Please refer to the installation manual.

Electrical: Brewer is 3-wires plus ground service rated 120/208V or 120/240V, single phase, 60Hz.

Plumbing: 20-90 psi (138-621 kPa). Machine supplied with ¼" (6.4 mm) male fitting.



Bunn-O-Matic Corporation of Canada - 280 Industrial Pkwy. S. Aurora, Ontario L4G 3T9 • 905-841-2866 • Fax 905-841-2775 • www.bunn.com

BUNN® practices continuous product research and improvement. We reserve the right to change specifications and product design without notice. Such revisions do not entitle the buyer to corresponding changes, improvements, additions or replacements for previously purchased equipment.

All dimensions shown in inches. Bunn Corporation owns all copyrights relating to materials in this publication. Please contact Bunn Corporation to request permission to reproduce any portion of this publication.